

Lummi Indian Business Council Lummi Health and Dental Facility

PRESENTED BY:

SEAN LAWRENCE, DIRECTOR, OFFICE OF ECONOMIC POLICY

Agenda

Introduction

Background

Overview of Past Efforts

Overview of Current Efforts

Overview of Lummi Health and Dental Facility Project

Next Steps

Q & A

Introduction



Sean Lawrence

- Director, Office of Economic Policy (<2 years)
- Provide leadership and technical assistance to Nation-owned and member-owned enterprises in support of raising the standard of living for Lummi Tribal Members
- Serves as a member of the (internal) Solar Energy Task Force, now Energy Task Force
- Business Analyst, 4+ years
- Masters of Business Administration – Arizona State University ('18)
- Bachelors of Art – Tribal Governance and Business Management – Northwest Indian College ('15)

Background

Lummi Indian Business Council is the Governing Body for the Lummi Nation

The Lummi Nation continues to govern its own affairs. Investing in the education and training of our people, developing our economy, and holding true to our values.

Our mission is to protect, preserve, and promote our *“Schelangen - Way of Life”*.





Copyright 2017 Sol Inc. Solar pathway lighting for Lummi Nation, Bellingham, WA

Overview of Past Efforts

1980s-2010s

- Tribe is interested in exploring energy projects
 - Cogeneration facility
 - Wind Energy Assessment
 - Haxton Way Pedestrian Path – Solar Powered
 - Lummi Tribal Administration Building – Geothermal Heat Pumps

2014

- Guiding Principles of Climate Change
- Energy Efficiency Pilot Program

2016

- [Climate Change Mitigation and Adaption Strategy](#)
- [Strategic Energy Plan](#)

2020

- Implementation of a Solar Energy Task Force



Current Efforts

Renaming of Solar Energy Task Force to Energy Task Force

Installation Projects

- Lummi Tribal Administration Building* -Solar
- Lummi Early Learning Program* - Solar
- Lummi CAREs Building*- Solar
- Lummi Nation K-12 School - Solar
- Northwest Indian College – Solar
- Lummi Health and Dental Facility – Geothermal Heat Pumps

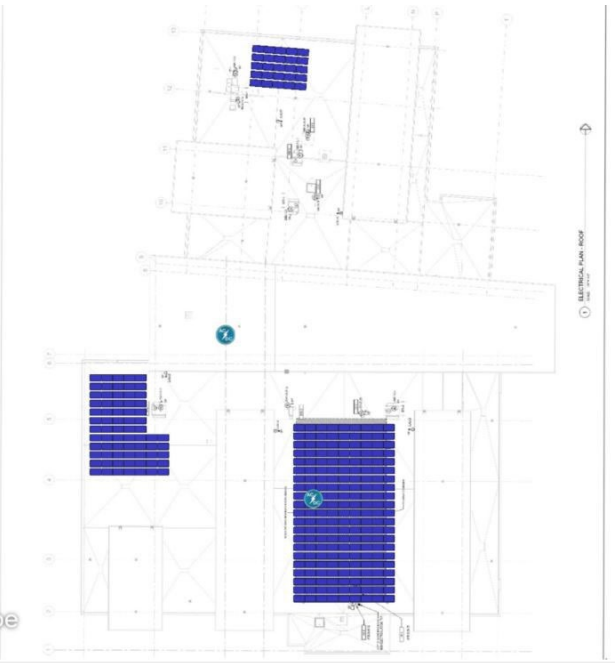
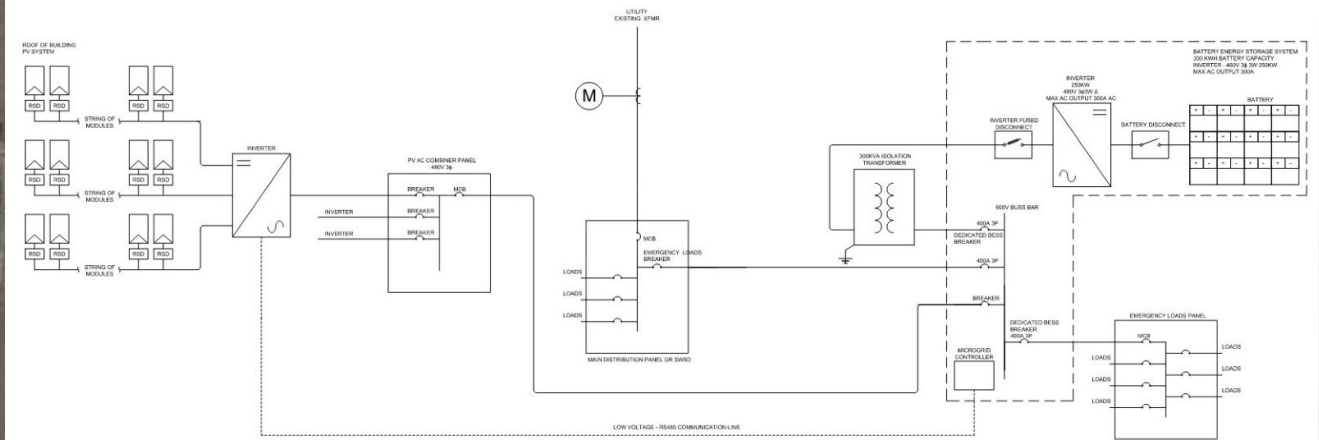
Each project includes workforce development

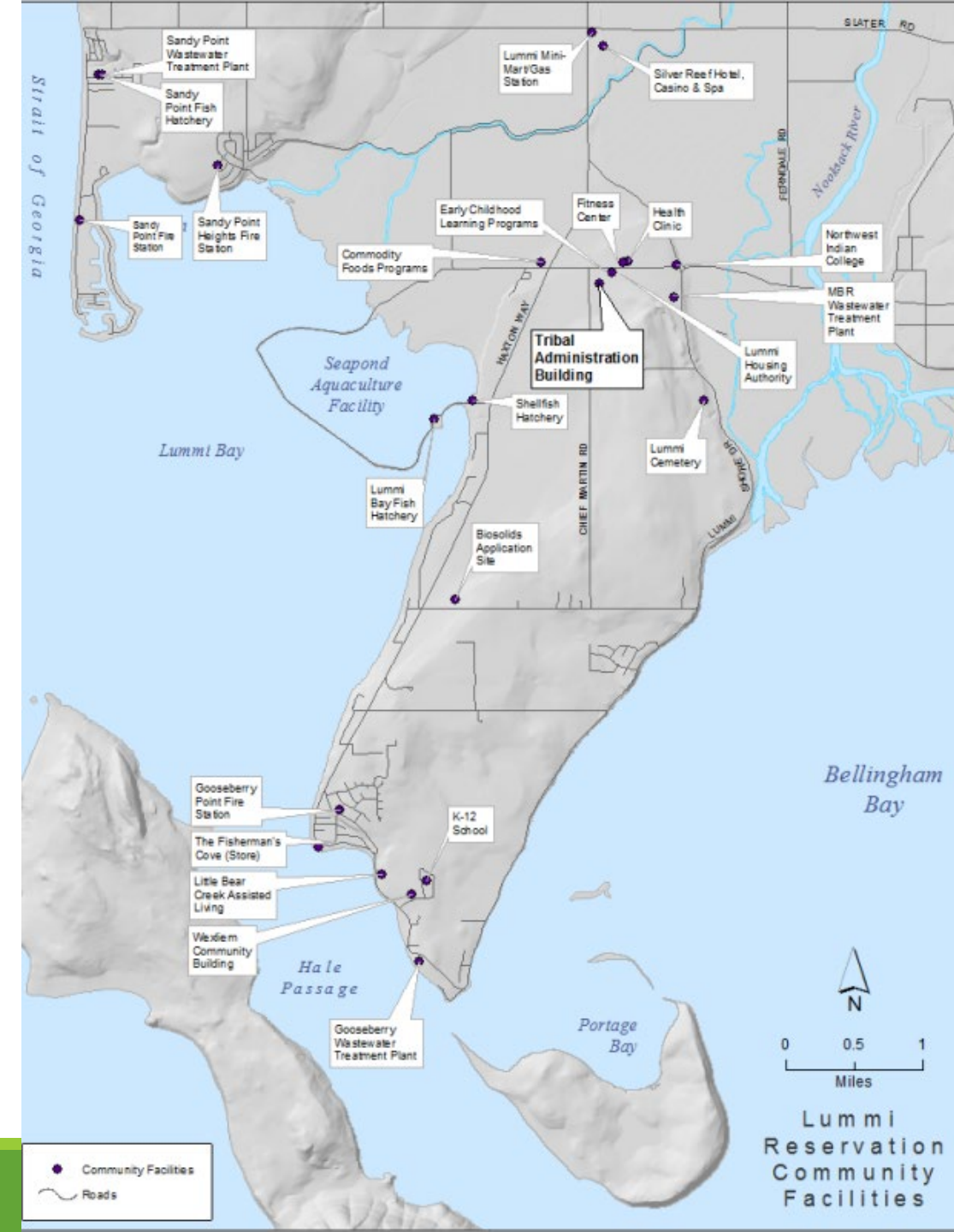
Lummi Microgrid Feasibility Study

Federal, State, and Local partners support these efforts

* Projects that distribute energy savings to the community

SOLAR + STORAGE FOR EMERGENCY PANEL CONNECTION
MG250





Lummi Indian Business Council

Lummi Nation Health and Dental Facility

Control Number: #2317-1523

Topic Area 1a: Energy Generating System(s)

Project Summary

The Lummi Nation will install a 99.8 kW photovoltaic (solar electric) system at the Lummi Nation Health and Dental Facility, a new 50,000 square foot facility to be located at 2616 Kwina Rd, Bellingham, WA in an effort to 1) improve economic and energy self-sufficiency and 2) reduce emissions from energy production and use that contribute to global climate change, air quality degradation, and other adverse environmental and human health impacts. The new clinic will be located in a high visibility area, which hosts a cluster of community resources. Additionally, tribal members will receive training in solar system operations and maintenance to mitigate long term costs and improve workforce opportunities.



The Lummi Nation Health and Dental Facility will embody an integrated care approach with features that maximize economic, ecological and social benefits, and support goals toward energy sovereignty.

Key Personnel/Organizations

Sean Lawrence, LIBC Office of Economic Policy
Dale Andert, LIBC Public Works
Tim Ellis, LIBC Public Works
Cornerstone General Contractor
Rhima Electric

Budget

Federal funds requested: \$146,123

Cost-share proposed: \$146,123

Total Project Costs: \$292,246

Project Outcomes

- 99.8 kW Solar PV Array providing 114,600 kWh/year estimated production, 14% offset from a baseline, an estimated \$324,984 of energy savings over 25 years
- Solar technology training for 7 Lummi tribal members
- Per year, the solar PV system will eliminate an estimated 77,784 pounds CO₂, 48 pounds SO₂, and 72 pounds NO_x.

Next Steps

Lummi Nation Health and Dental Facility

- Confirm with roof design engineer solar panel racking system and weight of system conforms to standards
- Confirm structural and electrical design
- Procure materials
- Complete installation by June 30, 2023

Energy Task Force

- Hold kick off meeting
- Identify progress on past and current efforts
- Identify opportunities for future projects
 - US DOE Sect 40101(d) Funds
 - US DOE OIEP NOFOs
 - US DOT Production/Investment Tax Credits
 - WA Department of Commerce
- Provide regular updates to LIBC

Q & A?

For more information contact:

Sean Lawrence

Email: SeanL@lummi-nsn.gov

Office: (360) 312-2158

Cell: (360) 306-7262

LinkedIn: [Sean Lawrence, MBA | LinkedIn](#)

Disclaimers

WASHINGTON STATE CLEAN ENERGY FUND 3

The Projects identified in this presentation (Lummi Tribal Administration Building, Early Learning Program, and CARE building), are funded in part by the Washington State Department of Commerce, Clean Energy Fund 3 (CEF3), Low-Income Community Solar Deployment (LICSD) Grant Program.

WASHINGTON STATE HOUSING FINANCE COMMISSION

The Projects identified in this presentation (Lummi Tribal Administration Building, Early Learning Program, and CARE building), are funded in part by the Washington State Housing Finance Commission, Sustainable Energy Trust (SET) Program

Disclaimers (Continued)

UNITED STATES BUREAU OF INDIAN AFFAIRS

The views and conclusions contained in this document are those of the authors and should not be interpreted as representing the opinions or policies of the U.S. Government

PUGET SOUND ENERGY

Puget Sound Energy Retains the exclusive right to claim credit for the Environmental Attributes associated with the Renewable Energy Credits under a Purchase and Sales Agreement.