

Manufactured Home Insulation: Roof Top Blow Method

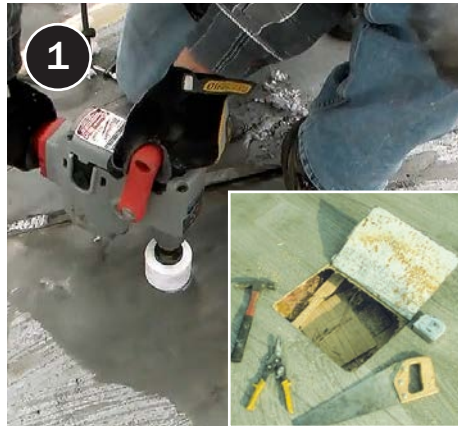
Job Aid for Insulate the Ceiling of a Manufactured Home Badge

Aligns With Standard Work Specifications 4.0103.11

BEFORE



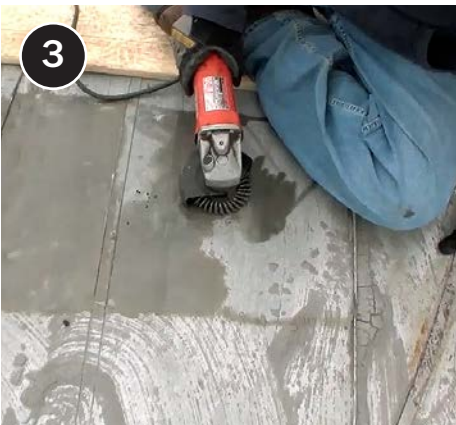
Confirm the structural integrity of the roof assembly and verify no active roof leaks exist prior to installation.



1 Cut access holes (rectangular or round holes) large enough to fit a fill tube in each cavity.



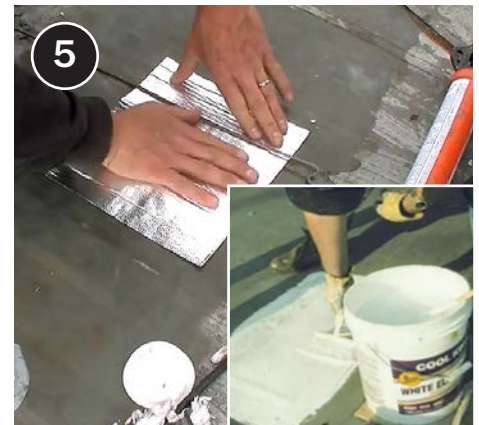
2 Carefully insert a fill tube or pipe and insulate all areas to the correct density using fiberglass insulation.



3 Prepare the area around the hole before installing a metal patch.



4 Install a bead of sealant and mechanically fasten a metal patch in place.



5 Install a flexible adhesive roof patch over the first patch. When complete, apply a final coat of elastomeric paint over the affected area.

CHECKLIST

Insulate the ceiling of a manufactured home

DESIRED OUTCOME

Consistent, uniform thermal boundary and air barrier between the conditioned space and unconditioned space.¹

Ceiling prepared for insulation:

- Any high-temp issues have been safely addressed.
- Ventilation ductwork terminates to the exterior.
- Plumbing stacks terminate to the exterior.
- Recessed lights are insulation contact-rated or are replaced with insulation contact-rated fixtures or equipped with inserts.
- Roof/ceiling is in good repair.
- Interior ceiling penetrations are sealed.
- Dust control measures installed as needed.

Insulation:

- Drill holes or otherwise access cavities to allow for consistent, uniform coverage to the proper depth.
- Install insulation according to the manufacturer's requirements to achieve density of 1.5–1.6 lbs per cubic foot.
- Overblow no more than 5 bags according to manufacturer's coverage chart.
- Repair access points/holes in a workmanlike manner.
- Fill out applicable sections of house-wide insulation certificate with² insulation type, coverage area, installed thickness, settled thickness, R-value, and number of bags installed.

1. Relevant Standard: 4.0103.11

2. Underlined details are required on all insulation certificates. Other items are required only when using blown-in insulation.