

Insulate Under a Floored Attic

Job Aid for Insulate Attic Floor and Pass Inspection First Time Badge

Aligns With Standard Work Specifications 4.0103.6

BEFORE



Attics with flooring often hide uninsulated cavities.



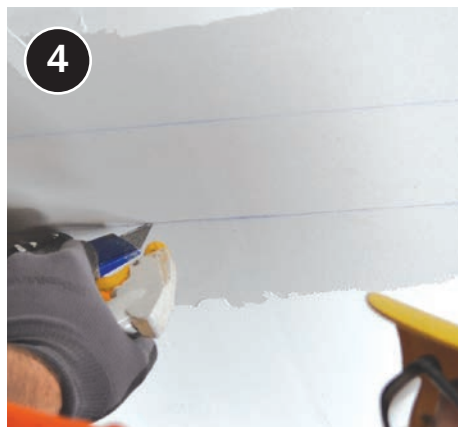
Ensure that floor cavities and chases are blocked securely at both ends with all edges of the blocking sealed.



If boards can be loosened, pry up as few boards as possible to access all cavities. If flooring is in solid sheets, access holes may need to be drilled.



Fill entire cavity with insulation to prescribed density. Reinstall any boards removed and close any access holes when complete.



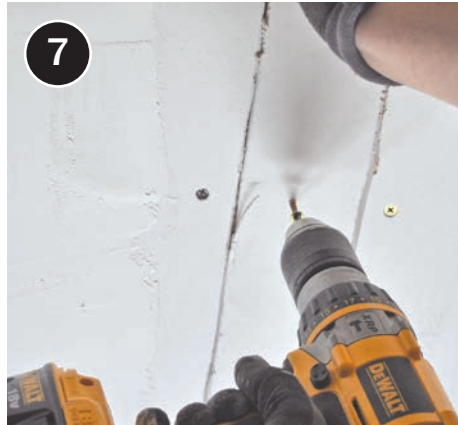
Occasionally, a homeowner may not want the attic floor to be disturbed. The cavities can also be accessed from below through the ceiling, particularly in garages.



Blocking still needs to be put into place if open cavities extend into conditioned space (e.g., cavity below a knee wall in an outer ceiling joist attic space).



Blow insulation to completely fill cavities to prescribed density.



Fill and reseal access holes to prevent air movement.



An insulated attic floor provides a continuous, contiguous, safe, and compliant thermal boundary that reduces air movement.

CHECKLIST

Insulate attic floor and pass inspection the first time

DESIRED OUTCOME

Consistent thermal boundary between conditioned and unconditioned space controls heat flow.¹

Preinstallation check:

- ☐ Safety protocols (e.g., venting, lighting, protective barriers) implemented prior to beginning work.
- ☐ Worker can determine whether attic is ready for insulation (e.g., check for air sealing, confirm dams around high-temp items).

Post-installation check:

- ☐ Insulation blown to proper depth.
- ☐ Level and even coverage reaches to all edges.
- ☐ Insulation is not blown onto equipment or between dams and the items dams are protecting.
- ☐ No more than 5 bags over-blown according to manufacturer's coverage chart.
- ☐ When insulating attic platforms or attics with partial platforms, insulation is in contact with air barrier (under platform) not blown over platform.
- ☐ Insulation has no gaps, voids, compression, or misalignment.
- ☐ Applicable sections of house-wide insulation certificate are filled out with² insulation type, coverage area, installed thickness, settled thickness, R-value, number of bags installed.

1. Relevant Standards: 4.0103.6

2. Underlined details are required on all insulation certificates.
Other items are required only when using blown-in insulation.