

# Install a Low-Flow Showerhead

Job Aid for Install Low-Flow Faucet Aerators or Showerhead Badge

Aligns With Standard Work Specifications 7.0201.1

## BEFORE



Higher flow showerheads waste water and use energy to heat water that could be saved by installing a low-flow showerhead.

1



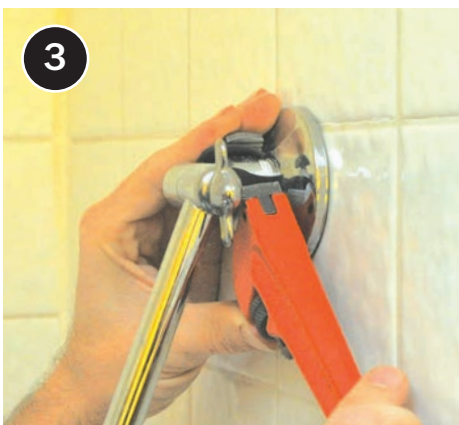
Carefully remove old showerhead with adjustable wrench, taking care not to loosen shower arm.

2



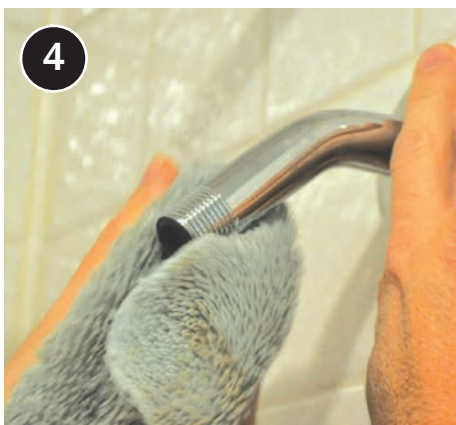
If old showerhead does not have flat sides at connection, wrap with buffer material, such as a piece of rubber.

3



Then use pipe wrench or channel locks to loosen connection at shower arm.

4



Clean threads of shower arm well to remove old residue.

5



Wrap new thread tape around threads.



6 Install new showerhead according to occupant needs, such as handheld, shut-off, or swivel.



7 Ensure that connections will not leak while preventing damage by using buffer material.



8 Use thread tape at all connections.



9 Verify proper water flow and that there are no leaks.



**AFTER**  
Low-flow showerheads must have flow rates of 2.5 gallons per minute or less, to reduce heating load and water use.

## CHECKLIST

# Install low-flow faucet aerators or showerhead

## DESIRED OUTCOME

Energy and water use reduced while occupant needs for water flow maintained.<sup>1</sup>

- Equipment is installed in accordance with manufacturer instructions and applicable building codes.
- Rated flows of new fixtures will be no more than:
  - Showerheads—2.5 gallons per minute.
  - Faucet aerators—2.2 gallons per minute.
- Faucet aerator/showerhead is installed so that:
  - There is no water leakage upon completion.
  - Fixtures are undamaged.
  - Fixtures are fully functional (verify by testing).

1. Relevant Standards: 7.0201.1