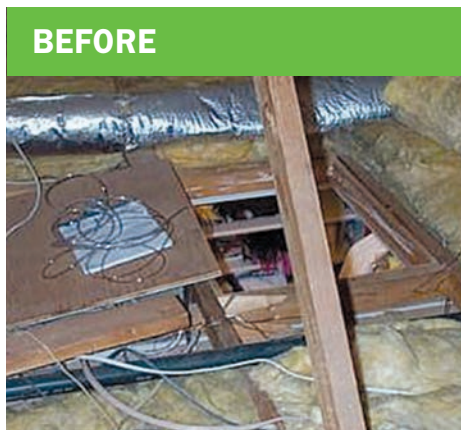


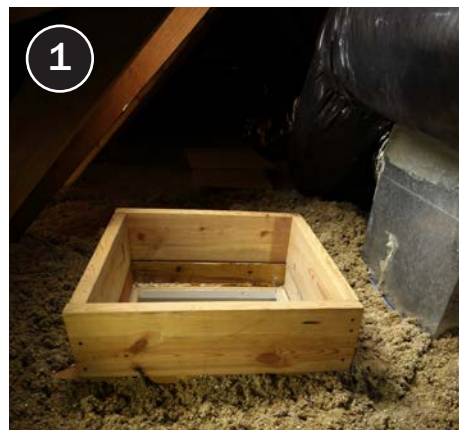
# Dam, Seal, and Insulate an Attic Hatch

Job Aid for Treat Attic Hatch Badge

Aligns With Standard Work Specifications 3.0103.1



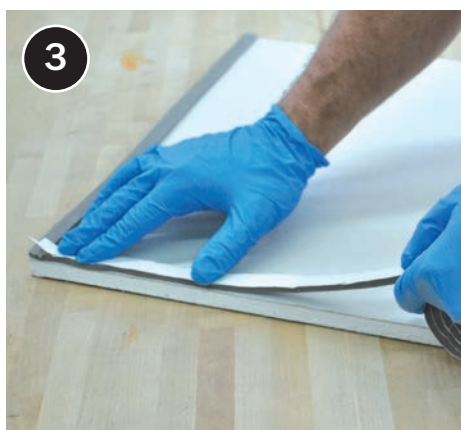
Uninsulated and unsealed attic access points allow conditioned air to escape the home in all seasons and reduce the overall R-value of the attic.



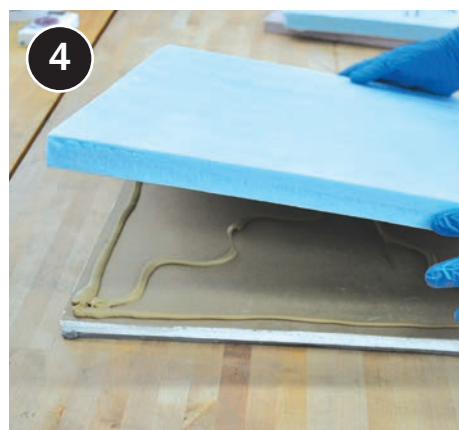
Rigid, durable damming is installed and mechanically fastened in place.



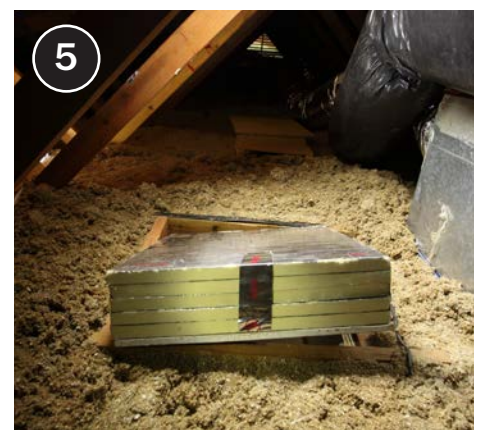
Dam is at least 2 inches taller than the final attic insulation depth.



If replacement is needed, cut a gypsum or plywood board to size and use a durable weatherstrip or closed cell foam tape to create a seal.



Cut and stack rigid foam insulation, gluing with appropriate adhesive, to build up R-value. Ensure the foam meets thermal or ignition barrier requirements of the authority having jurisdiction.



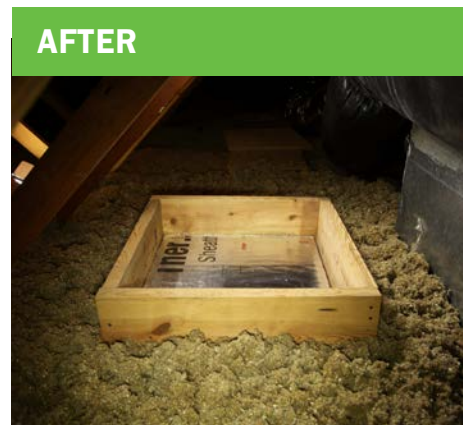
Hatch is insulated to proper R-value (the maximum R-value structurally allowable, up to the final insulation level of surrounding attic).



Trim is air sealed with appropriate material.



For vertical accesses, run weatherstripping or closed cell foam tape to air seal at these doorways too. Hold vertical accesses closed with latch if necessary.



Safely and durably sealing and insulating attic access doors prevents air movement and reduces heating and cooling loads.

# CHECKLIST

## Treat attic hatch

### DESIRED OUTCOME

Attic access door or hatches properly sealed and insulated to minimize heat loss or gain and prevent insulation from falling out of attic when accessed.<sup>1</sup>

- Install rigid,<sup>2</sup> durable attic hatch blocking/dam in a permanent way.
- Dam will remain 2" taller than final attic insulation depth.
- Insulate hatch to proper R-value (the maximum R-value structurally allowable, up to the final insulation level of surrounding attic).
- Durably attach insulation to hatch.
- Weatherstrip or otherwise treat access to prevent air movement when hatch is closed.
- Ensure access closes with a tight fit or latch.
- Air seal trim with appropriate material.
- Verify air-tightness of hatch when closed with blower door and smoke (or infrared, if temperatures permit).

1. Relevant Standards: 3.0103.1

2. When height around access is limited and variance request has been approved, nonrigid materials may be used for damming attics, but to earn this badge, an appropriate attic must be found to display skills in constructing a rigid dam.