



Energy Transitions Initiative Partnership Project

The U.S. Department of Energy's (DOE's) Energy Transitions Initiative Partnership Project (ETIPP) offers technical assistance to competitively selected remote and island communities seeking to transform their energy systems and increase their energy resilience.

ETIPP works directly with communities to plan resilient solutions to energy challenges by combining the experience of local community leaders with the capabilities of the ETIPP partner network.

Learn more about ETIPP at energy.gov/eere/about-energy-transitions-initiative-partnership-project.

Energy Resilience



The ability to anticipate, prepare for, and adapt to changing conditions and withstand, respond to, and recover rapidly from energy disruptions.

Supporting Remote, Island, and Islanded Communities

ETIPP offers technical assistance for remote, island, and islanded communities to analyze energy systems and plan for increased resilience. ETIPP defines remote, island, or islanded communities as:

- **Remote** communities are isolated from a reliable electrical grid by geographical impediments or from large population centers and, as a result, have limited access to centralized energy systems.
- **Island** communities are isolated from the mainland by waterways.
- **Islanded** communities are not grid-tied to large transmission-scale power systems and, as a result, experience frequent issues with electric reliability and/or power quality. These communities may be categorized as “remote” or “island.”

Competitively selected communities work with experts at DOE's national laboratories to design and execute a 12–18 month technical assistance project that helps them meet their energy resilience goals. In 2020, 11 communities were selected

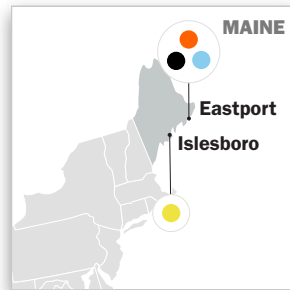
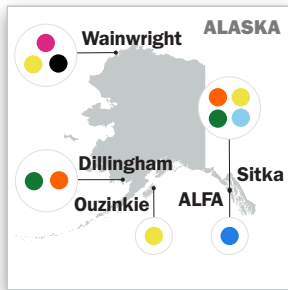
“The assistance provided through ETIPP is crucial in supporting the clean energy transition for remote, island, and islanded communities, which are especially vulnerable to high energy costs and the most severe effects of climate change.”

—Principal Deputy Assistant Secretary for Energy Efficiency and Renewable Energy Kelly Speakes-Backman

to participate in the first round of ETIPP. Learn more about ETIPP communities and their projects at energy.gov/eere/energy-transitions-initiative-partnership-project-communities.

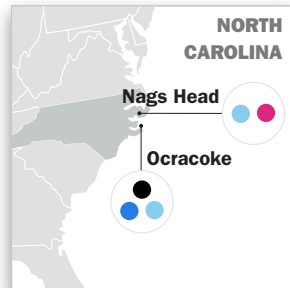
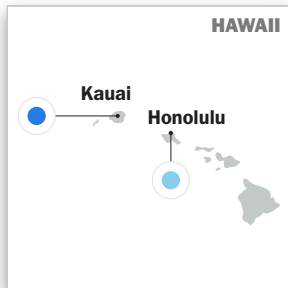
Developing Community-Driven Energy Solutions

ETIPP's energy analysis and planning support helps communities develop strategic energy resilience solutions that employ a range of energy technologies, such as energy efficiency in buildings, hydropower, microgrids, solar, wind, geothermal and marine energy, rate structures, storage, and electric transportation.



TECHNICAL ASSISTANCE AREAS

- Buildings
- Microgrids
- Rates/Tariffs
- Renewable Energy Potential
- Storage
- Transportation
- Hydropower or Marine Energy



Geographic distribution and focus areas for cohort 1 communities.

Illustration by Brittnee Gayet, NREL

What ETIPP Communities Are Saying

“Without the support and expertise that comes from participating in ETIPP, [our community] would not have the resources needed to take on such a project.”

– Eastport, Maine

“Our community came together with great ideas to move forward to prepare us for a better future.”

– Ouzinkie, Alaska

“This has been the most user friendly technical assistance we’ve ever received from the Department of Energy.”

– Wainwright, Alaska

ETIPP projects are driven by questions about community energy systems that can be answered using data-driven analysis. ETIPP analytical efforts are supported by strategic planning, training, and communication activities that ensure each community is prepared to implement energy solutions.

Working with ETIPP’s Partner Network

ETIPP leverages the expertise of a partner network—a broad coalition of DOE offices, national laboratories, regional nonprofit and academic organizations, and local community leaders. Within the ETIPP partner network, DOE provides policy and research leadership, national laboratories provide technical assistance, and regional partner organizations provide community engagement and capacity building.

Learn more about the ETIPP partner network at energy.gov/eere/energy-transitions-initiative-partnership-project-partner-network.

ETIPP builds on a framework developed by DOE’s Energy Transitions Initiative (ETI) to develop resilience in remote, island, and islanded communities worldwide. The framework leverages DOE’s decades of work supporting community-led energy transitions through partnerships, technical assistance, planning resources, tools, and trainings. For more information on ETI’s resources, tools, and work to advance the development of self-reliant and resilient island and remote communities, visit energy.gov/eere/energy-transitions-initiative. ■

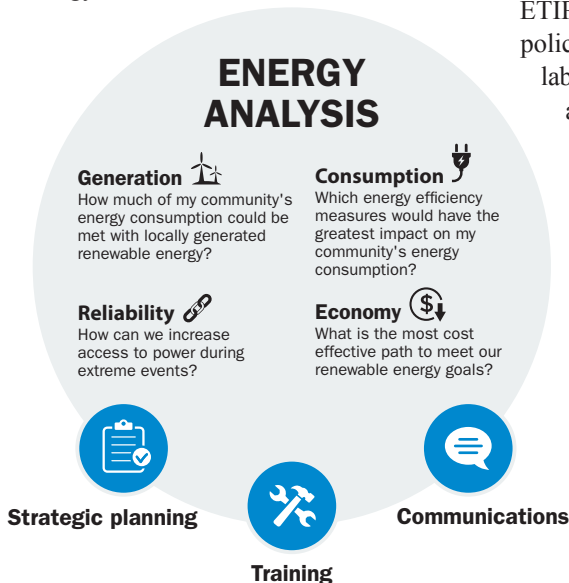


Illustration by Liz Craig, NREL

Cover photos from left to right: iStock 155600390, 482253268, 1295820664, 118357308

