

Building Resilient Infrastructure and Communities Non-Financial Direct Technical Assistance

2022 Tribal Energy Webinar Series: Energy Infrastructure and Climate Resilience | June 1st, 2022

Alison Griner, BRIC DTA Manager



FEMA



Agenda

- BRIC Program Overview
 - BRIC Legislation
 - BRIC Guiding Principles
 - BRIC Funding
- Direct Technical Assistance
 - What is Non-Financial Direct Technical Assistance (DTA)?
 - DTA Communities
 - How Does DTA Work?
 - Eligibility for DTA
 - DTA-Supported Activities
 - Technical Assistance Types
 - Resources



Legislation



- Disaster Recovery Reform Act (DRRA) Section 1234, which amends Section 203 of the Stafford Act
- Funded by a 6% set-aside from federal post-disaster grant funding
- Eligible applicants – states, territories, and tribes with major disaster declarations in past seven years
- Will replace FEMA's existing pre-disaster mitigation (PDM) program



FEMA

BRIC's Guiding Principles

Guiding Principles



Support Community Capability
& Capacity Building



Encourage and Enable
Innovation



Promote Partnerships



Enable Large Infrastructure
Projects



Maintain Flexibility



Provide Consistency

Supports FEMA's Strategic Plan

1

Build a Culture of
Preparedness

2

Ready the Nation for
Catastrophic Disasters

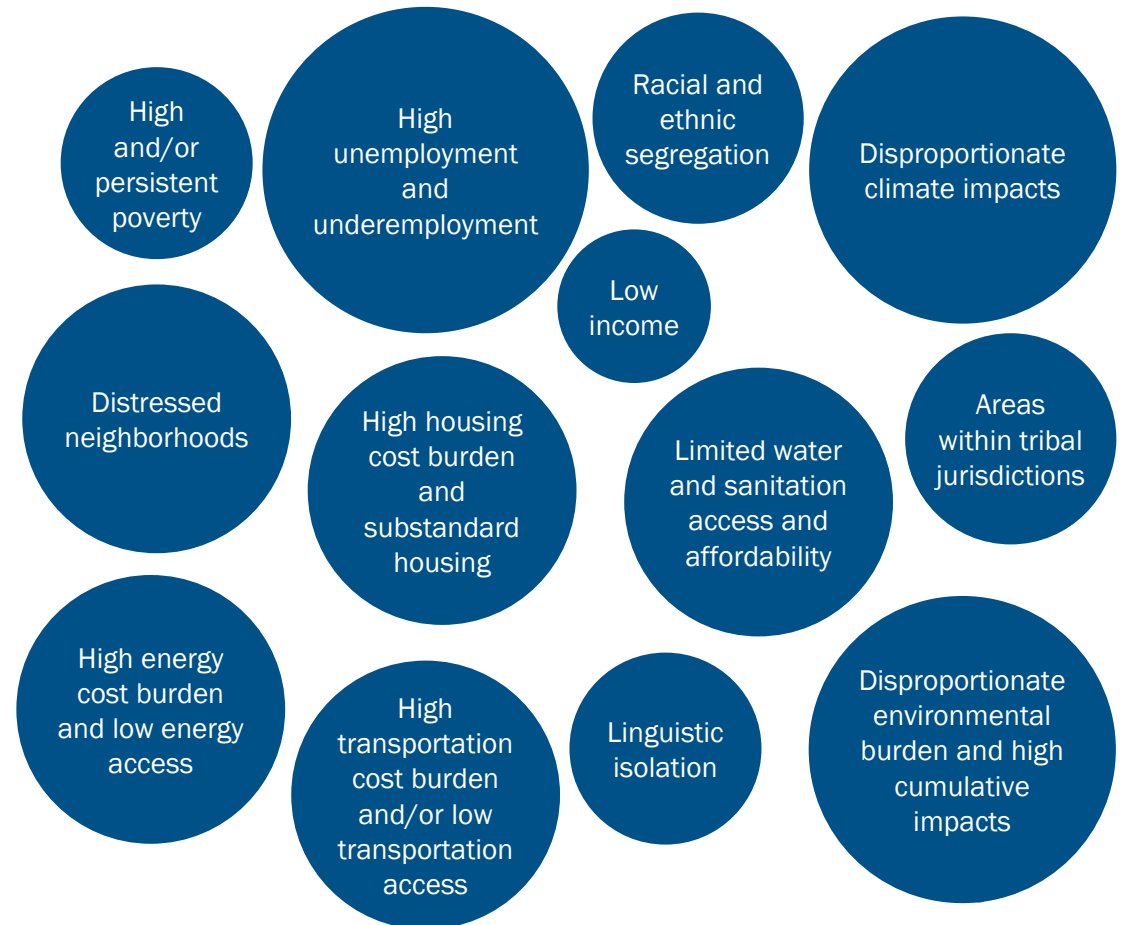
3

Reduce the Complexity of
FEMA

What's New: Meeting the Needs of Disadvantaged Communities Justice40 Initiative

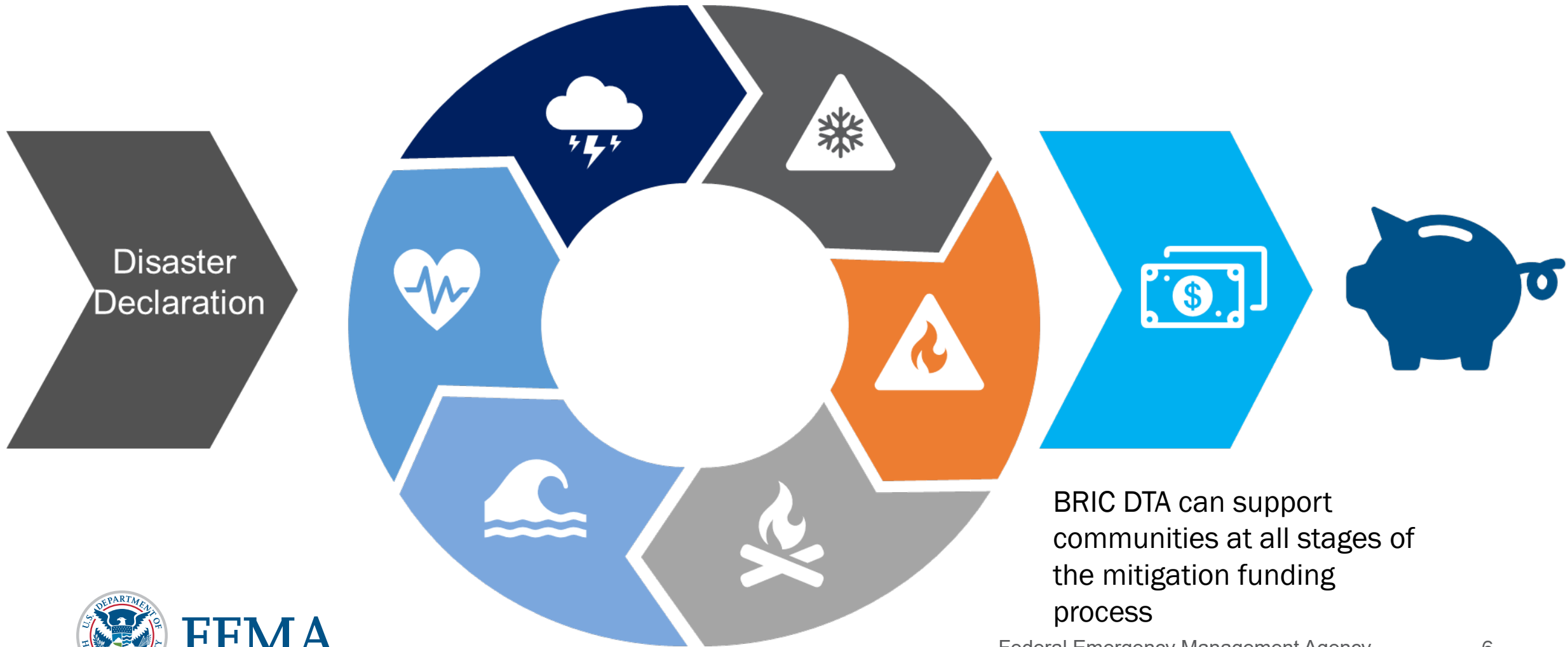
- The BRIC Program is prioritizing assistance that benefits disadvantaged communities as referenced in Executive Order 14008 - Tackling the Climate Crisis at Home and Abroad (2021)

Disadvantaged communities may be characterized by:



FEMA

BRIC Funding



FEMA

FY 2021 BRIC Funding

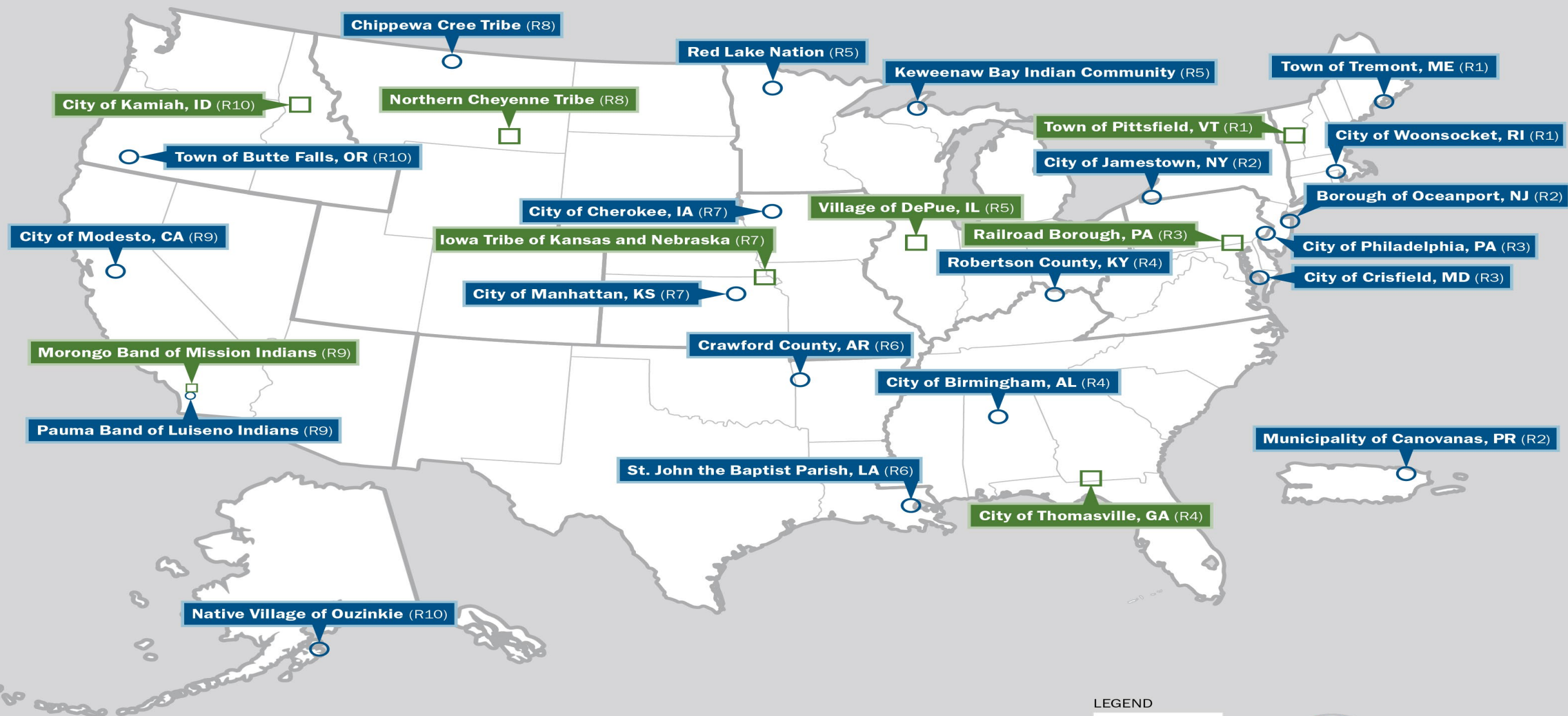
Total Available BRIC FUNDING \$1 Billion

Uses of Assistance	\$56 M State/Territory Allocations	\$25M Tribal Set-Aside	\$919M National Competition for Mitigation Projects
Management Costs	✓	✓	✓
Capability and Capacity Building Activities	✓	✓	
Mitigation Projects	✓	✓	✓

What is Non-Financial Direct Technical Assistance (DTA)?

- During Building Resilient Infrastructure and Communities (BRIC) program design, applicants and subapplicants asked for more technical assistance during the project planning and application process.
- In fiscal year 2020, DTA was established as a new initiative under the BRIC program.
- BRIC and DTA are currently undergoing their second annual application, review, and award cycle.
 - Year 1 - 8 communities chosen
 - Year 2 - 20 communities recently announced (May 18, 2022)

DTA Communities



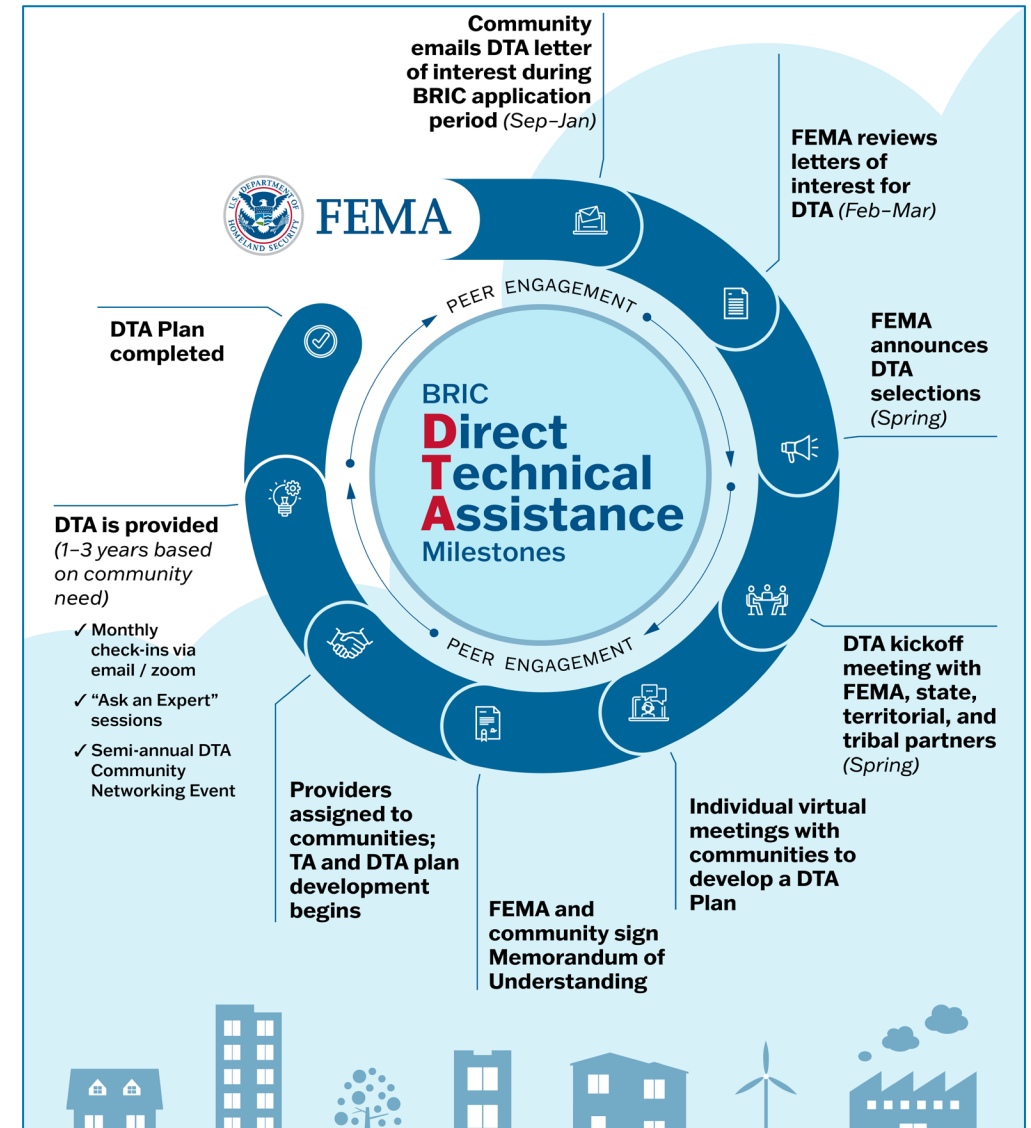
Note: This map is a visual representation of DTA community locations



FEMA

How Does DTA Work?

- DTA is simple, customizable, and flexible.
- DTA allows FEMA to provide support in the following ways:
 - Holistic planning support at the earliest stages of mitigation projects
 - Support for development of a project or application development assistance
 - Connection to providers, partners, or experts for additional support and assistance



FEMA

Eligibility for DTA

Eligible Entities

- Tribal Nations
- Cities
- Towns
- Counties
- Special District Governments

Requested support must:

- Improve the community's capability and capacity to conduct mitigation activities
- Increase resilience to natural hazards
- Identify projects that will do the same

NOTE: Eligibility **does not** require a BRIC subapplication or award, or a Hazard Mitigation Plan



FEMA



DTA-Supported Activities

Scope

- Assisting community members in:
 - Reviewing needs and future plans
 - Identifying and engaging stakeholders
 - Identifying grant opportunities
- Building capability and capacity
- Increasing knowledge
- Increasing access to resources
- Furthering community resilience objectives

Support

- FEMA staff or staff assisting on behalf of FEMA

Technical Assistance Types



DTA Providers may assist with:

- Development of timelines and resources planning
- Identification, communication, and convening of mitigation stakeholders and partners
- Development or update of hazard risk assessments to identify specific mitigation projects
- Development of grant applications, including Benefit-Cost Analysis support
- Identifying possible relevant grant opportunities



DTA Providers may facilitate:

- A review of previous and existing efforts related to a project, including planning, data, and other mitigation projects
- Prioritization and assistance with mitigation projects conceptualization, including feasibility requirements, but excluding engineering design
- Training on Hazard Mitigation Assistance grant application development and grant management



FEMA

BRIC Program Resources on FEMA.gov

[Building Code Activities](#)



[BRIC Mitigation Planning Activities](#)



[BRIC Direct Technical Assistance](#)



[BRIC Phased Projects](#)



[Hazard Mitigation Cost Share Guidance](#)



[BRIC Application Tips](#)



[BRIC Partnership Activities](#)



[Project Scoping Activities](#)



[Mitigation Action Portfolio](#)



[BRIC Technical Criteria](#)



[BRIC Tribal Information](#)



[BRIC Qualitative Criteria](#)



FEMA

BRIC DTA Webpage

For additional information please go to the BRIC [DTA webpage](#)

- Submit requests
- Host community examples and showcase success
- Identify engagement opportunities
- Helpful resource for communities to get acquainted with available program support materials
- Document list and links (found on the [BRIC webpage](#))
 - [BRIC Program Support Materials](#)
 - BRIC Notice of Funding Opportunity



FEMA Helplines

FEMA Helplines

- **Benefit Cost Analysis (BCA) Helpline:** BCHelpline@fema.dhs.gov or 855-540-6744
- **Building Science Helpline:** FEMA-BuildingScienceHelp@fema.dhs.gov
- **BRIC DTA:** FEMA-BRICDirectTechnicalAssistance@fema.dhs.gov
- **Environmental Planning and Historic Preservation:** EHPHelpline@fema.dhs.gov or 866-222-3580
- **FEMA Grants Outcomes (FEMA GO) Helpline:** femago@fema.dhs.gov or 877-611-4700
- **Hazard Mitigation Assistance (HMA) Helpline:** 866-222-3580



FEMA

Thank you



FEMA