

WATER MANAGEMENT UPDATE

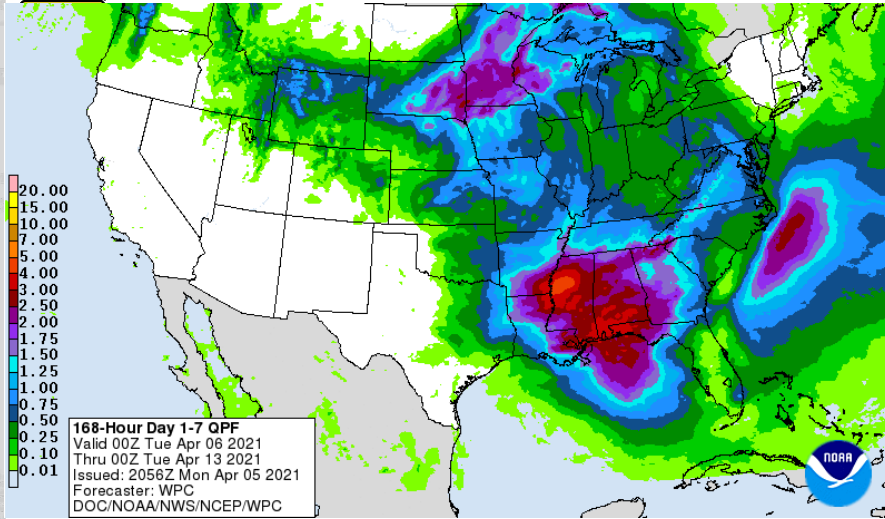
Anthony Rodino III, P.E.
Chief, Water Management Section
Nashville District
6 April 2021



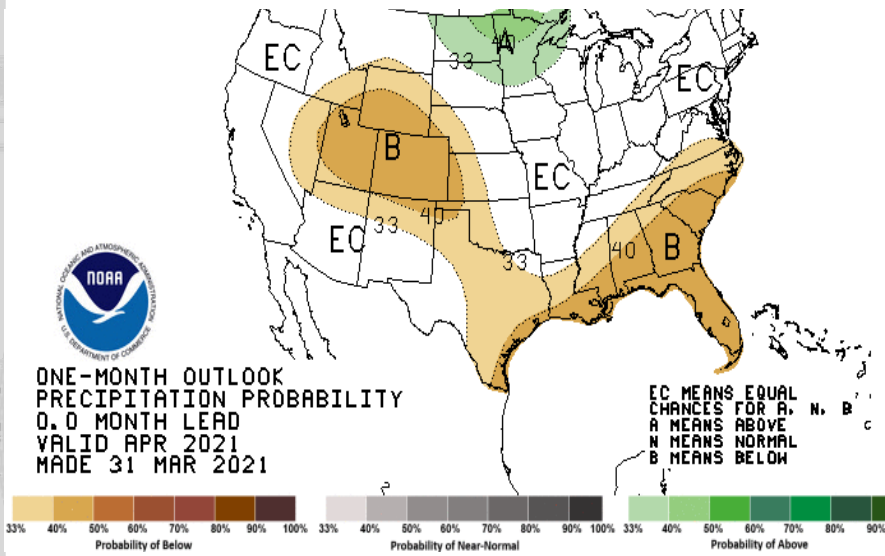
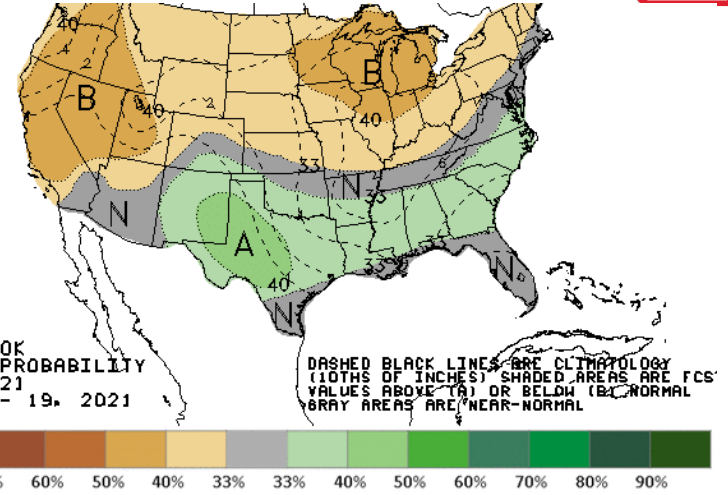
US Army Corps
of Engineers®



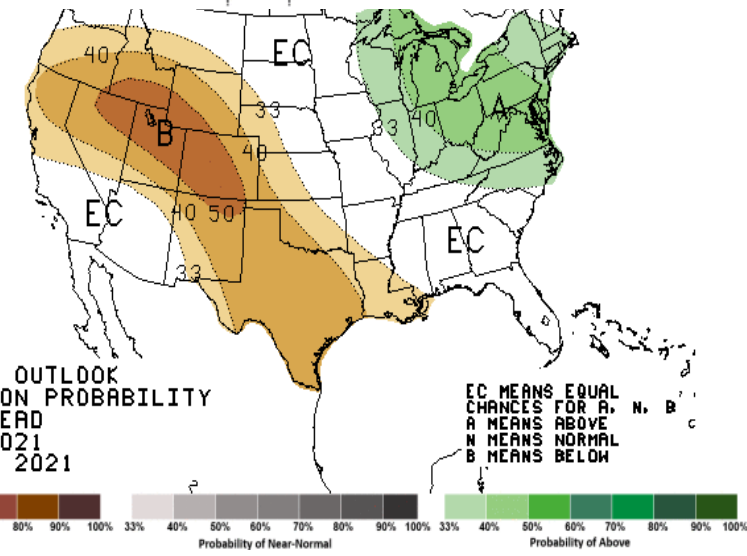
NWS PRECIPITATION FORECAST



**8-14 DAY OUTLOOK
PRECIPITATION PROBABILITY**
MADE 5 APR 2021
VALID APR 13 - 19, 2021



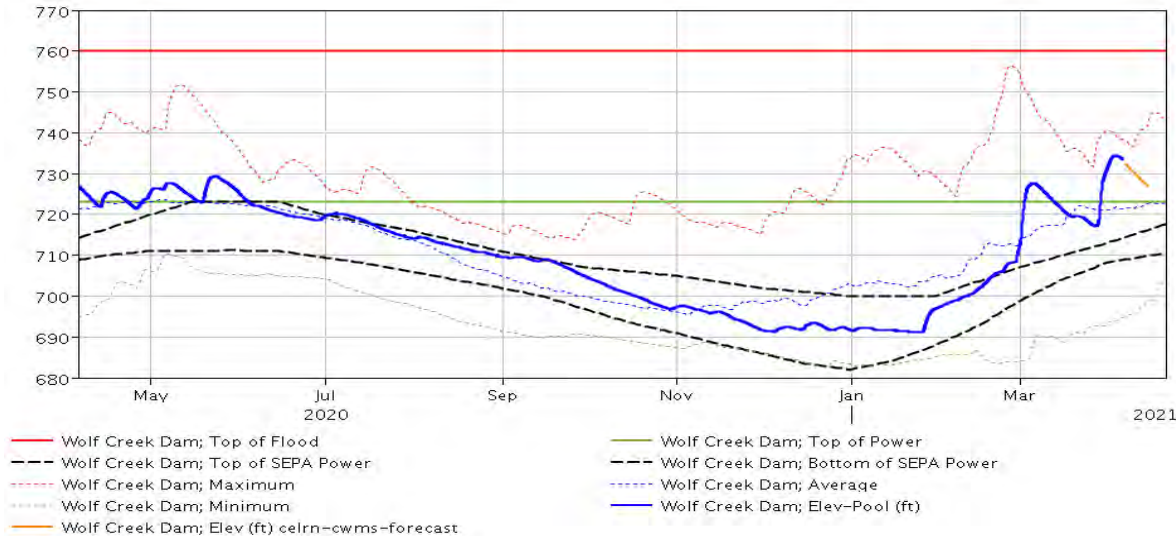
**THREE-MONTH OUTLOOK
PRECIPITATION PROBABILITY**
0.5 MONTH LEAD
VALID AMJ 2021
MADE 18 MAR 2021





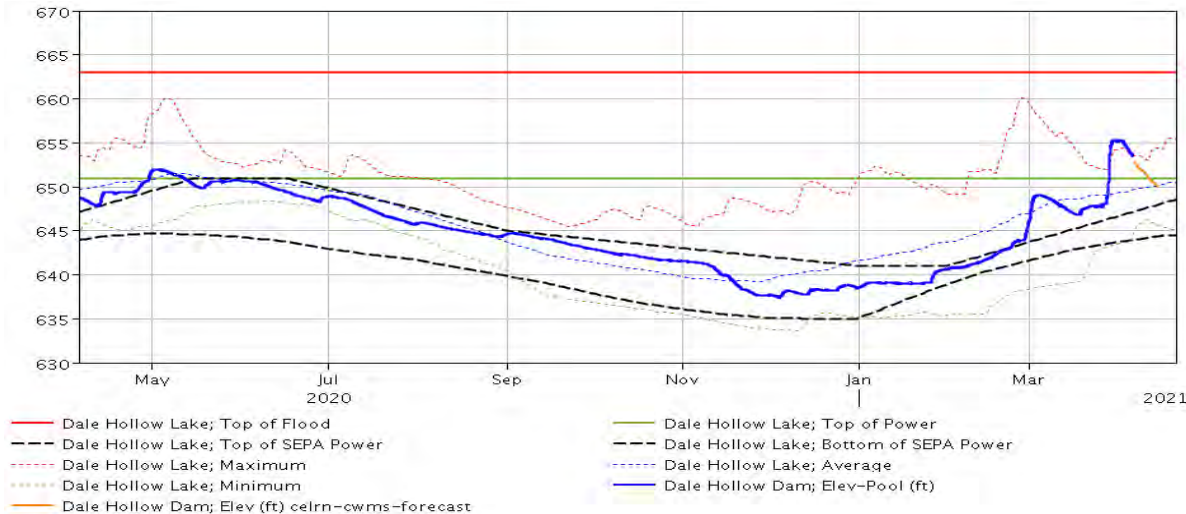
LRN PROJECT STATUS

Wolf Creek



Current Elevation: 733.3'
- 10.3' above Conservation Pool
- Summer Forecast: 723'

Dale Hollow



Current Elevation: 653.3'
- 2.3' above Conservation Pool
- Summer Forecast: 651'

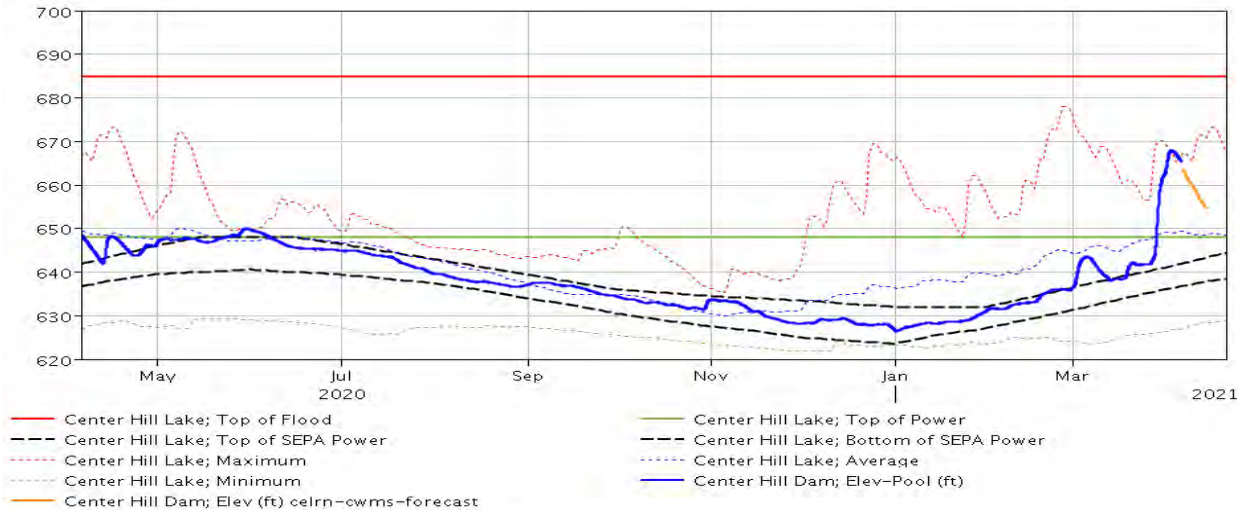


LRN PROJECT STATUS

Center Hill

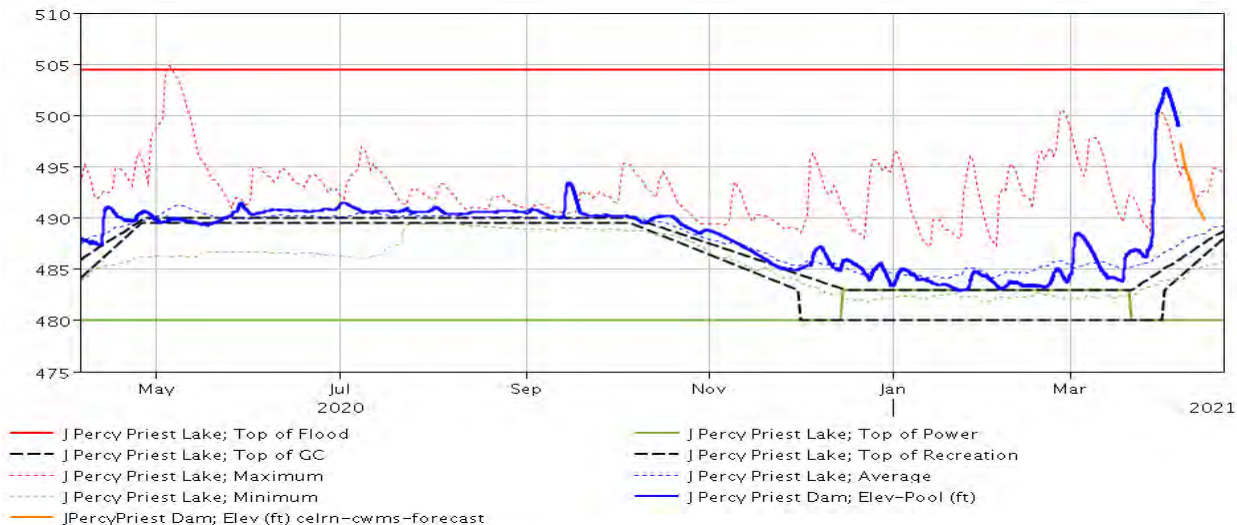


4



Current Elevation: 665.2'
- 17.2' above Conservation Pool
- Summer Forecast: 648'

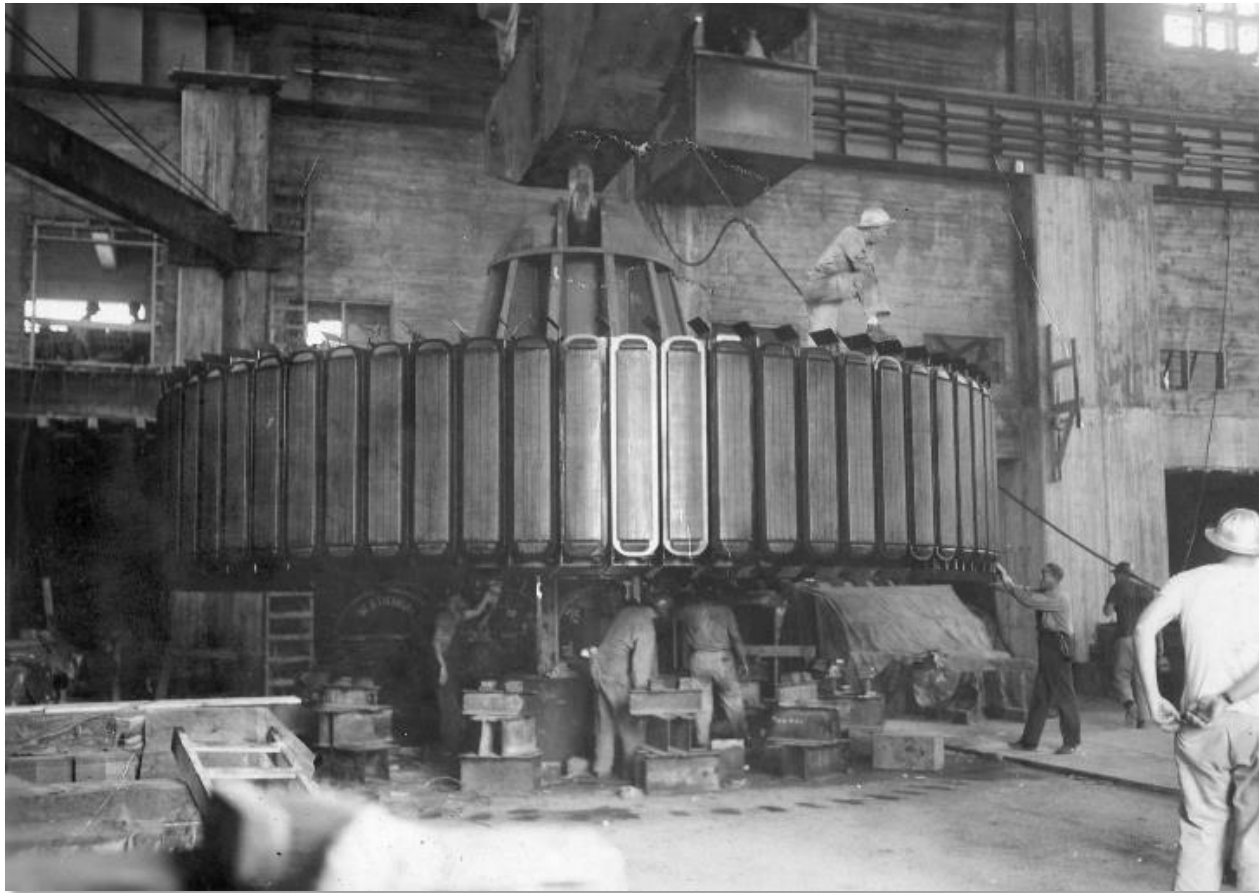
J. Percy Priest



Current Elevation: 498.9'
- 8.9' above Summer Pool
- Summer Forecast: 490'



QUESTIONS?



Wolf Creek Generator Rotor