



Cheniere Energy, Inc.
700 Milam Street, Suite 1900
Houston, Texas 77002
phone: 713.375.5000
fax: 713.375.6000

RECEIVED

By Docket Room at 9:40 am, Apr 02, 2020

April 1, 2020

Submitted Via DOE's Online Portal

U. S. Department of Energy
Office of Fossil Energy - Natural Gas Regulatory Activities
P.O. Box 44375
Washington, DC 20026-4375

Re: Sabine Pass Liquefaction, LLC
DOE Semi-Annual Report for Period of September 1, 2019, through February 29, 2020
FE Docket No / Order:
10-85-LNG / 2833
10-111-LNG / 2961*
13-30-LNG, 13-42-LNG, and 13-121-LNG /3306*, 3307*, 3384* & 3669*
14-92-LNG / 3595
15-63-LNG / 3792

Pursuant to the above-referenced Orders, Sabine Pass Liquefaction, LLC ("Sabine Pass"), herein submits its semi-annual report for September 1, 2019, through February 29, 2020, describing the construction progress of the Sabine Pass Liquefaction Project. This report covers the construction and commissioning activities for Stage 3 (LNG Train 6) authorized under CP13-552-000. Included as **Attachment A** are the Monthly Reports for construction activities which were submitted to Federal Energy Regulatory Commission under FERC Docket Number CP13-552-000 during the reporting period.

Sabine Pass entered the following long-term gas supply contract(s) during the period from September 1, 2019, through February 29, 2020:

- Gas Supply Agreement entered into by Sabine Pass on January 7, 2020 with Scona LLC for an annual contract quantity approximating 155,125,000 MMBtu.
- Gas Supply Agreement entered into by Sabine Pass on January 13, 2020 with GEP Haynesville, LLC for an annual contract quantity approximating 18,250,000 MMBtu.

Should you have any questions about the instant filing, please feel free to contact the undersigned at (713) 375-5000.

Respectfully,

Karri Mahmoud
Sabine Pass Liquefaction, LLC

Sabine Pass Liquefaction, LLC
DOE Semi-Annual Report for Period September 1, 2019, through February 29, 2020

ATTACHMENT A

SABINE PASS LIQUEFACTION PROJECT

Cameron Parish, Louisiana

Monthly Progress Report
September 2019

Table of Contents

1.	Executive Summary	1
2.	Project Highlights	1
3.	Environmental, Safety, and Health Progress	1
4.	Schedule	1
5.	Construction and Start up	2
6.	Permitting and Environmental	2
7.	Progress Pictures	3

1. Executive Summary

This report covers activities during the month of September 2019.

Bechtel continues to progress the project and is now at 38.1% complete against the plan of 35.5% through September 2019. Currently, Engineering is 83.8% complete, procurement is 54.1% complete, subcontracts is 34.3% complete, and Construction is 5.5% complete.

2. Project Highlights

During the month of September, Construction completed concrete base slabs at the AGRU Rack and Heavies Removal Area, as well as section 3 of the Propane Rack. Works at the Compressor area included completion of propane tabletop concrete, while continuing with the rebar and formwork at the Ethylene and Methane tabletop sections. Erection of lower level steel nears completion in the Cryo Rack, with aboveground pipe commencing in the Mercury Dehydration Rack. The Amine Sump valve box was completed, ready for final tie-in to the underground amine pipe.

3. Environmental, Safety, and Health Progress

During the reporting month, the following ES&H events occurred:

	Near Misses		First Aid		Recordable		ITD	
	Month	ITD	Month	ITD	Month	ITD	Month	ITD
Bechtel	0	2763	6	3787	0	113	0	15
Subcontractor	0	123	1	239	0	9	0	1
Total	0	2886	7	4026	0	122	0	16

4. Schedule

Bechtel continues to progress the project and is now at 38.1% complete against the plan of 35.5% through September 2019. Currently, Engineering is 83.8% complete, procurement is 54.1% complete, subcontracts is 34.3% complete, and Construction is 5.5% complete.

5. Construction and Start up

Activities by Area		
Area	Activities in September	Planned Work for October
Train 6	<ul style="list-style-type: none"> Completed concrete tabletop at Propane section of Compressor area Completed concrete base slabs at AGRU Rack, Heavies Removal Area, and Section 3 of the Propane Rack Completed equipment foundations and pedestals at north side of the Mercury Removal area Commenced Aboveground Pipe installation in Mercury Dehydration Area Commenced on-site fabrication and welding of the Hockey Sticks pipe for the Compressor Area Completed valve box at Amine Sump Completed Hot Oil underground pipe tie-ins to sump 	<ul style="list-style-type: none"> Complete tabletop rebar and formwork for Ethylene and Methane tabletops at Compressor area Complete concrete tabletop at Ethylene and Methane sections of Compressor area Complete concrete base slabs at Fuel Gas Area, Hot Oil Surge Drum area, Condensate Stabilization Area and Thermal Oxidizer Area Complete concrete columns / saddles and pedestals at Propane Refrigeration area Complete equipment foundations and pedestals at south side of the Mercury Removal area Commence aboveground pipe installation in Propane Condenser Area Complete erection of structural steel in Mercury Dehydration Area Commence cable tray installation in Propane Condenser Rack Complete Amine underground pipe tie-ins to sump Complete underground firewater pipe installation

6. Permitting and Environmental

Summary of Problems, Non-Compliances, and Corrective Actions

Date	Description
None.	

Agency Contacts/Inspections

Agency	Name	Date	Location/Activity
None.			

7. Progress Pictures



Propane Tabletop at Compressor Area



Steel and Pipe Progress at Mercury Dehydration Rack



Structural Steel progress at Propane Condenser Rack



Amine Sump Progress at Amine Regeneration Area

SABINE PASS LIQUEFACTION PROJECT

Cameron Parish, Louisiana

Monthly Progress Report
October, 2019

Table of Contents

1.	Executive Summary	1
2.	Project Highlights	1
3.	Environmental, Safety, and Health Progress	1
4.	Schedule	1
5.	Construction and Start up	2
6.	Permitting and Environmental	3
7.	Progress Pictures	4

1. Executive Summary

This report covers activities for the month of October 2019.

Bechtel continues to progress the project and is now at 40.6% complete against the plan of 37.8% through October 2019. Currently, Engineering is 88.1% complete, procurement is 57.5% complete, Subcontracts is 35.7% complete, and Construction is 6.8% complete.

2. Project Highlights

During the month of October, construction completed the elevated concrete for the Ethylene section of the Compressor Area and concrete base slabs and pedestals at a variety of other areas. Erection of lower level steel in the Cryo Rack was completed and progress is now being made on the upper level steel in this area. Aboveground pipe is now progressing in three separate piperacks, with fabrication underway for another two locations. The Amine and Hot Oil underground pipe systems are now complete.

3. Environmental, Safety, and Health Progress

	Near Miss		First Aid		Recordable		Lost Time	
	Month	ITD	Month	ITD	Month	ITD	Month	ITD
Bechtel	0	2763	7	3795	0	113	0	15
Subcontractor	0	123	0	239	0	9	0	1
Total	0	2886	7	4034	0	122	0	16

4. Schedule

Bechtel continues to progress the project and is now at 40.6% complete against the plan of 37.8% through October 2019. Currently, Engineering is 88.1% complete, procurement is 57.5% complete, Subcontracts is 35.7% complete, and Construction is 6.8% complete.

5. Construction and Start up

Activities by Area		
Area	Activities in October	Planned Work for November
Train 6	<ul style="list-style-type: none"> ○ Completed concrete tabletop at Ethylene section of compressor area ○ Completed concrete base slabs at Fuel Gas Facilities Area, Dehydration and Mercury Removal Area, Condensate Stabilization Area, and the Utility Piperack ○ Completed seal slab at Amine Storage and Thermal Oxidizer Area, Acid Gas Removal Area, H2S Removal Area, and Propane Substation Area ○ Completed equipment foundations and pedestals at Compressor Substation Area, sections 1 and 4 of the Cryo Rack Area, AGRU Area, Fuel Gas Facilities Area, Propane Refrigeration Area, Dehydration and Mercury Removal Area, Hot Oil Surge Area, and sections 3 through 6 of the Propane Condenser Rack ○ Completed lower level and commenced upper level Structural Steel erection in Cryo Rack Area ○ Completed structural steel erection in Dehydration and Mercury Removal Area ○ Commenced structural steel erection in Fuel Gas Facilities Area and below the elevated concrete at the Propane Section of the Compressor Area ○ Commenced installation of aboveground pipe in Propane Condenser Rack ○ Commenced on-site fabrication and welding of aboveground pipe for the Fuel Gas Facilities Area ○ Completed Amine and Hot Oil underground pipe installation ○ Commenced cable tray in Propane Condenser Rack 	<ul style="list-style-type: none"> ● Complete elevated concrete at Methane section of Compressor area ● Complete concrete base slabs at Amine Storage and Thermal Oxidizer Area, Acid Gas Removal Area, and Hot Oil Surge Drum area ● Complete equipment foundations and pedestals at south side of the Mercury Removal area and Heavies Removal Unit Area ● Commence erection of structural steel in AGRU Area and OSBL Rack ● Commence aboveground pipe installation in AGRU Area

6. Permitting and Environmental

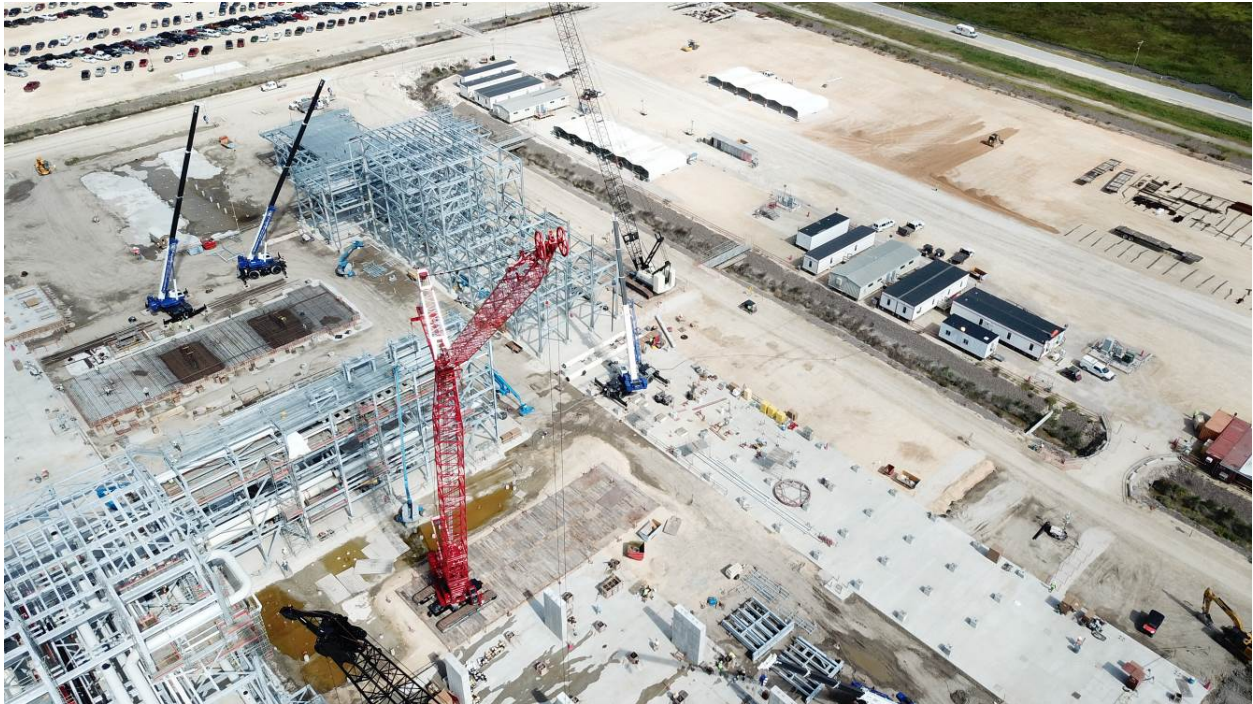
Summary of Problems, Non-Compliances, and Corrective Actions

Date	Description
None.	

Agency Contacts/Inspections

Agency	Name	Date	Location/Activity
None.			

7. Progress Pictures



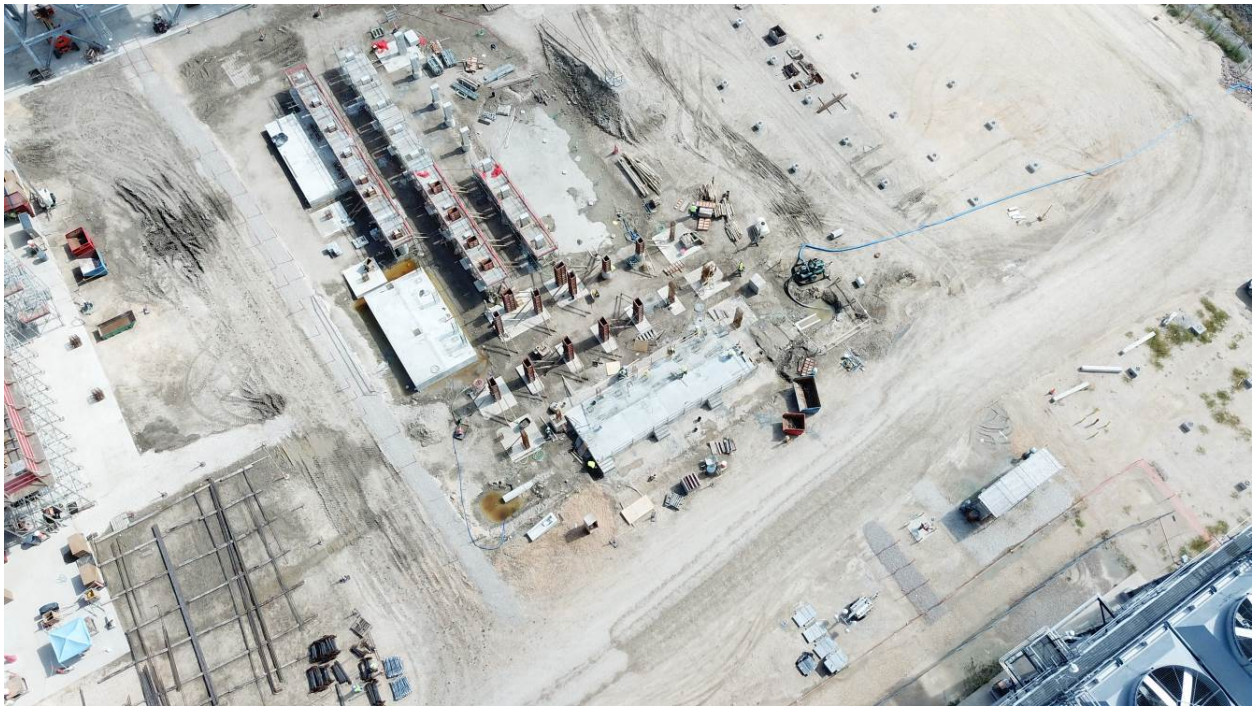
Structural Steel Progress at North end of Train 6



Upper and Lower Structural Steel Progress at Cryo Rack Area 446D01



Train 6 Progress facing East



Compressor Substation Foundations 446A02

SABINE PASS LIQUEFACTION PROJECT

Cameron Parish, Louisiana

Monthly Progress Report
November 2019

Table of Contents

1.	Executive Summary	1
2.	Project Highlights	1
3.	Environmental, Safety, and Health Progress	1
4.	Schedule	1
5.	Construction and Start up	2
6.	Permitting and Environmental	2
7.	Progress Pictures	3

1. Executive Summary

This report covers activities for the month of November 2019.

Bechtel continues to progress the project and is now at 42.6% complete against the plan of 39.8% through November 2019. Currently, Engineering is 89.6% complete, Procurement is 60.2% complete, Subcontracts is 36.6% complete, and Construction is 8.2% complete.

2. Project Highlights

During the month of November, Construction completed the elevated concrete for the Methane section of the Compressor Area 446A01 and concrete base slabs and pedestals at various other areas. Erection of structural steel continued in the Cryo Rack 446D01 and the Propane Condenser Rack 446N01, and commenced in the AGRU Area (E01), the OSBL R10 Rack, and under the elevated deck of the Compressor Area (A01). Aboveground pipe is now progressing in four separate piperacks, with fabrication underway in another two locations.

3. Environmental, Safety, and Health Progress

During the reporting month, the following ES&H events occurred:

	Near Miss		First Aid		Recordable		Lost Time	
	Month	ITD	Month	ITD	Month	ITD	Month	ITD
Bechtel	1	2764	6	3801	0	113	0	15
Subcontractor	0	123	0	239	0	9	0	1
Total	1	2887	6	4040	0	122	0	16

4. Schedule

Bechtel continues to progress the project and is now at 42.6% complete against the plan of 39.8% through November 2019. Currently, Engineering is 89.6% complete, Procurement is 60.2% complete, Subcontracts is 36.6% complete, and Construction is 8.2% complete.

5. Construction and Start up

Activities by Area		
Area	Activities in October	Planned Work for November
Train 6	<ul style="list-style-type: none"> ○ Completed elevated concrete at Methane section of Compressor area ○ Completed concrete base slabs at Amine Storage and Thermal Oxidizer Area, Acid Gas Removal Area, and Hot Oil Surge Drum area ○ Commenced foundation concrete at Propane Substation Area ○ Completed equipment foundations and pedestals at south side of the Mercury Removal area, Heavies Removal Unit Area, Compressor Substation Area ○ Completed base slab concrete at tank foundation in Amine Storage Area ○ Commenced erection of structural steel in AGRU Area and OSBL piperack, and under the elevated deck of the Compressor Area ○ Completed structural steel erection in Fuel Gas Facilities Area ○ Commenced aboveground pipe installation in AGRU Area 	<ul style="list-style-type: none"> ● Complete concrete pads for equipment at Methane section of Compressor area ● Complete concrete base slabs at Acid Gas Removal Area ● Complete concrete pedestals at Propane Condenser Rack and Heavies Removal Unit ● Complete equipment foundations at Amine Storage and Thermal Oxidizer Area ● Complete drum wall, saddles and pedestals at Hot Oil Surge Drum Area ● Commence erection of miscellaneous steel in AGRU Area ● Commence prefabrication of aboveground pipe for E-W OSBL piperack

6. Permitting and Environmental

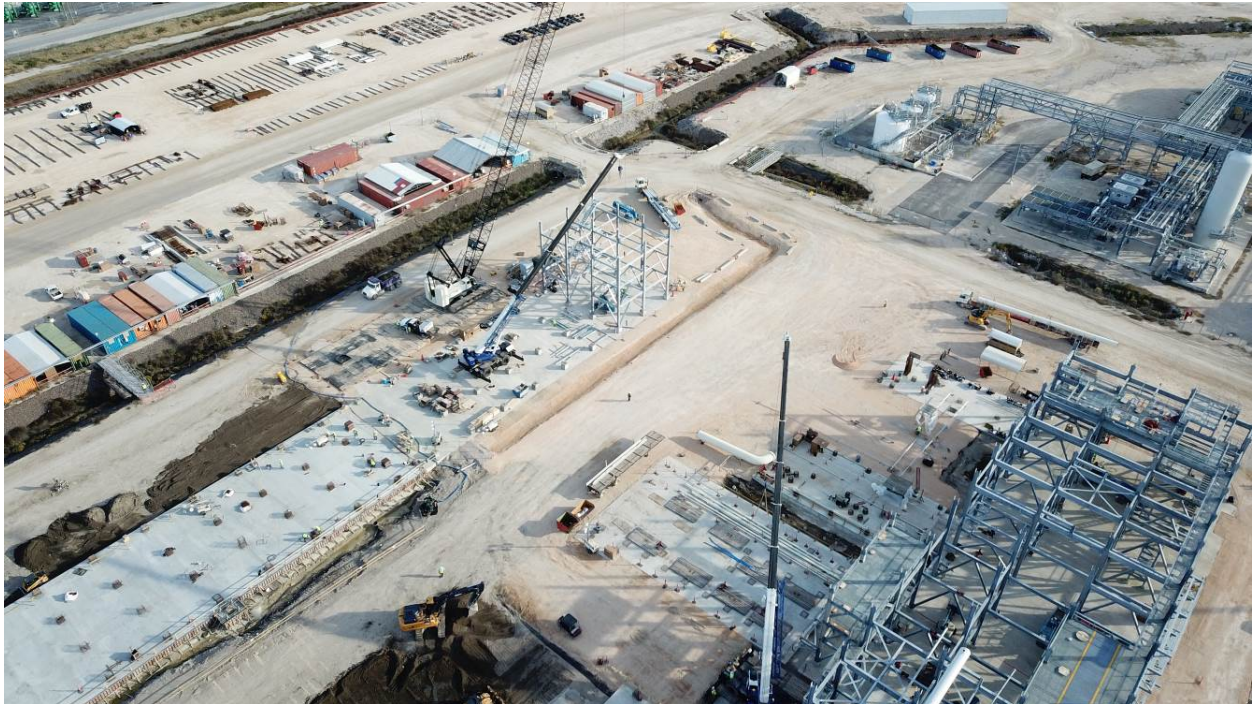
Summary of Problems, Non-Compliances, and Corrective Actions

Date	Description
None.	

Agency Contacts/Inspections

Agency	Name	Date	Location/Activity
None.			

7. Progress Pictures



Structural Steel Progress at South End of Train 6



Progress at North End of Train 6



"Under the Tabletop" structural steel in the Compressor Area



Structural Steel in the E-W Piperack Area

SABINE PASS LIQUEFACTION PROJECT

Cameron Parish, Louisiana

Monthly Progress Report
December 2019

Table of Contents

1.	Executive Summary	1
2.	Project Highlights	1
3.	Environmental, Safety, and Health Progress	1
4.	Schedule	2
5.	Construction and Start up	2
6.	Permitting and Environmental	2
7.	Progress Pictures	3

1. Executive Summary

This report covers activities for the month of December 2019.

Bechtel continues to progress the project and is now at 43.7% complete against the plan of 41.5% through December 2019. Currently, Engineering is 91.5% complete, Procurement is 60.9% complete, Subcontracts is 37.4% complete, and Construction is 9.7% complete.

2. Project Highlights

During the month of December, Construction completed the equipment pads for the Methane section of the Compressor Area and concrete base slabs and pedestals at various other areas. Erection of structural steel continued in the Cryo Rack, Propane Condenser Rack, AGRU Area, the OSBL R10 Rack, and under the elevated deck of the Compressor Area. Aboveground pipe is now progressing in five separate piperacks, with fabrication underway in two additional areas. Preparation works are underway for the setting of the first electrical substation in January 2020.

3. Environmental, Safety, and Health Progress

During the reporting month, the following ES&H events occurred:

	Near Miss		First Aid		Recordable		Lost Time	
	Month	ITD	Month	ITD	Month	ITD	Month	ITD
Bechtel	1	2766	4	3805	0	113	0	15
Subcontractor	0	123	0	239	0	9	0	1
Total	1	2889	4	4044	0	122	0	16

4. Schedule

Bechtel continues to progress the project and is now at 43.7% complete against the plan of 41.5% through December 2019. Currently, Engineering is 91.5% complete, Procurement is 60.9% complete, Subcontracts is 37.4% complete, and Construction is 9.7% complete.

5. Construction and Start up

Activities by Area		
Area	Activities in December	Planned Work for January
Train 6	<ul style="list-style-type: none"> ○ Completed concrete pads for equipment at Methane section of Compressor area ○ Completed concrete base slabs at Acid Gas Removal Area and H2S Removal Area ○ Completed concrete pedestals at Propane Condenser Rack and Heavies Removal Unit ○ Completed equipment foundations at Amine Storage and Thermal Oxidizer Area ○ Commenced erection of miscellaneous steel in AGRU Area ○ Commenced prefabrication of aboveground pipe for E-W OSBL Piperack 	<ul style="list-style-type: none"> ○ Complete concrete pedestals at Ethylene Cold Box and Mercury Removal and Dehydration Area, and commence concrete pedestals at Methane Cold Box Area ○ Complete tank wall construction and equipment foundations at Amine Storage and Thermal Oxidizer Area ○ Complete drum wall, saddles and pedestals at Hot Oil Surge Drum Area ○ Commence area paving at Amine Storage and Thermal Oxidizer Area ○ Commence erection of structural steel in Heavies Removal Unit ○ Commence installation of aboveground pipe for Compressor Area and E-W OSBL Piperack ○ Complete setting of Compressor Substation on foundation ○ Commence cable tray installation in E-W OSBL Pipe Rack

6. Permitting and Environmental

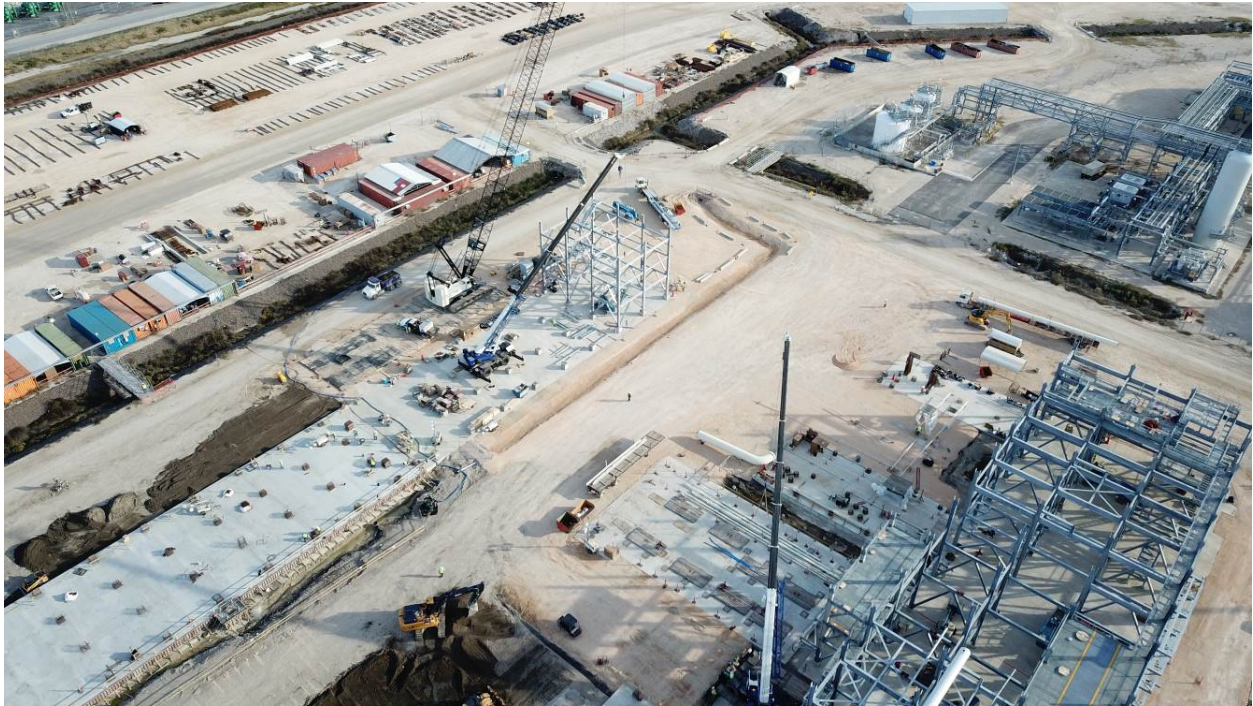
Summary of Problems, Non-Compliances, and Corrective Actions

Date	Description
None.	

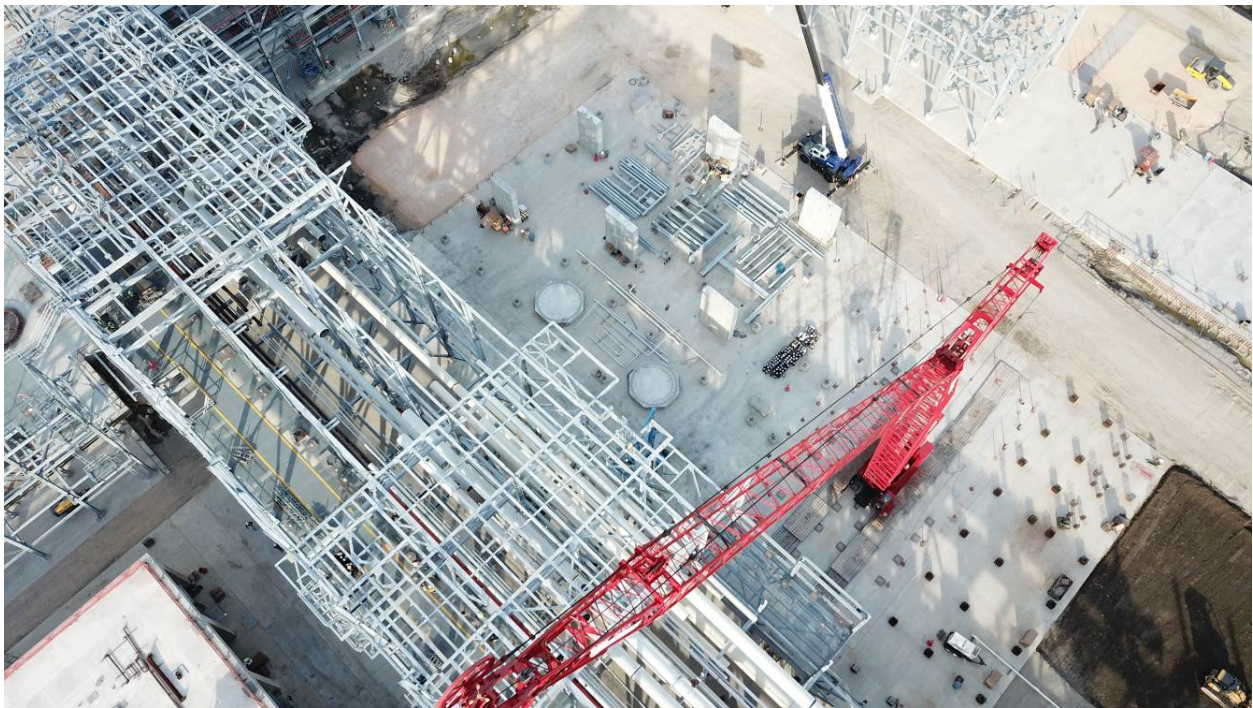
Agency Contacts/Inspections

Agency	Name	Date	Location/Activity
None.			

7. Progress Pictures



Structural Steel Progress at South End of Train 6

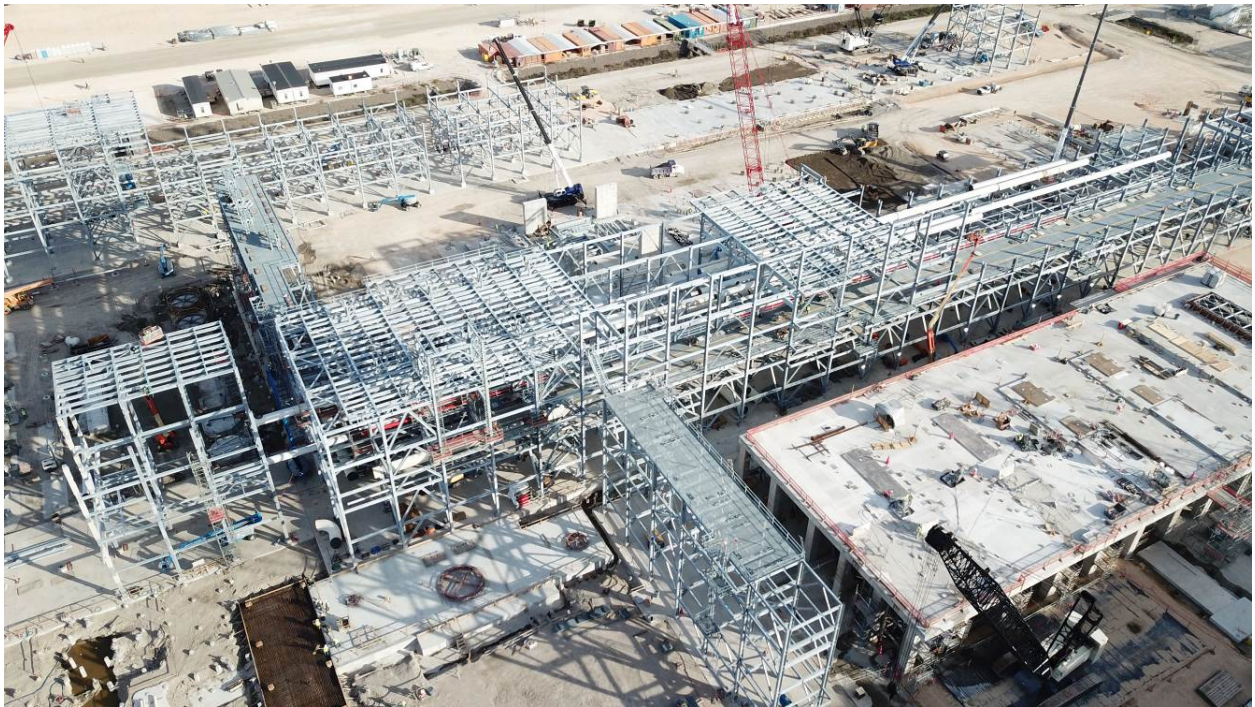


Concrete Saddles and Pipe Fabrication in Propane Refrigeration Area

Sabine Pass Liquefaction, LLC, Sabine Pass LNG, L.P. and Sabine Pass Liquefaction Expansion, LLC
December 2019 Monthly Progress Report



Progress at North End of Train 6



Train 6 Progress facing East

SABINE PASS LIQUEFACTION PROJECT

Cameron Parish, Louisiana

Monthly Progress Report
January 2020

Table of Contents

1.	Executive Summary	1
2.	Project Highlights	1
3.	Environmental, Safety, and Health Progress	1
4.	Schedule	1
5.	Construction and Start up	2
6.	Permitting and Environmental	2
7.	Progress Pictures	3

1. Executive Summary

This report covers activities for month of January 2020.

Bechtel continues to progress the project and is now at 47.0% complete against the plan of 43.2% through January 2020. Currently, Engineering is 92.4% complete, Procurement is 66.8% complete, Subcontracts is 37.9% complete, and Construction is 11.1% complete.

2. Project Highlights

During the month of January, Construction completed concrete pedestals in the Ethylene Cold Box Area, the tank walls construction at the Amine Storage and Thermal Oxidizer Area and concrete base slabs and pedestals at various other areas. Erection of structural steel commenced in the Heavies Removal Unit and continued in the Cryo Rack, Propane Condenser Rack, AGRU Area, the OSBL R10 Rack, and under the elevated deck of the Compressor Area. Aboveground pipe is now progressing in six separate piperacks. The first electrical substation and the first vessel, the Heavies Reflux Drum, were set this month.

3. Environmental, Safety, and Health Progress

During the reporting month, the following ES&H events occurred:

	Near Miss		First Aid		Recordable		Lost Time	
	Month	ITD	Month	ITD	Month	ITD	Month	ITD
Bechtel	2	2768	4	3808	0	113	0	15
Subcontractor	0	123	0	239	0	9	0	1
Total	2	2891	4	4047	0	122	0	16

Note: One (1) First Aid from November 2019 was found to be a duplicate and has been removed from ITD values

4. Schedule

Bechtel continues to progress the project and is now at 47.0% complete against the plan of 43.2% through January 2020. Currently, Engineering is 92.4% complete, Procurement is 66.8% complete, Subcontracts is 37.9% complete, and Construction is 11.1% complete.

5. Construction and Start up

Activities by Area		
Area	Activities in January	Planned Work for February
Train 6	<ul style="list-style-type: none"> Completed concrete pedestals at Ethylene Cold Box and H2S Removal Area Completed tank wall and equipment foundations at Amine Storage and Thermal Oxidizer Area Completed drum wall at Hot Oil Surge Drum Area Commenced area paving at Amine Storage and Thermal Oxidizer Area Commenced erection of structural steel in Heavies Removal Unit Commenced installation of aboveground pipe at E-W OSBL Piperack Set Compressor Substation on foundation Set HRC Heavies Reflux Drum in the Heavies Removal Unit 	<ul style="list-style-type: none"> Complete concrete foundations for HVAC equipment at the Compressor Substation Area and commence concrete foundations at Amine Regeneration Area Complete concrete pedestals at Ethylene Cold Box and Mercury Removal and Dehydration Area, Hot Oil Surge Drum Area, Condensate Stabilization Area and H2S Removal Area Complete area paving at Amine Storage and Thermal Oxidizer Area Complete erection of structural steel in E-W OSBL Pipe Rack and commence erection of structural steel in Amine Storage and Thermal Oxidizer Area and Condensate Stabilization Area Commence installation of aboveground pipe for Compressor Area and E-W OSBL Piperack Commence pneumatic testing of hockey-stick pipe for Compressor Area Set Propane Substation on foundation Commence cable tray installation in E-W OSBL Pipe Rack Complete installation of sole plates for compressors in Methane section of Compressor Area Set Debutanizer Reboiler and Debutanizer Feed Heater in Heavies Removal Unit Set Feed Gas Heater in the Inlet Gas Area Commence HVAC and Duct installation in Compressor and Propane Substation Areas

6. Permitting and Environmental

Summary of Problems, Non-Compliances, and Corrective Actions

Date	Description
None.	

Agency Contacts/Inspections

Agency	Name	Date	Location/Activity
None.			

7. Progress Pictures



Structural Steel Progress at South End of Train 6



Progress at North End of Train 6



Train 6 Progress facing East



Structural Steel in the E-W Piperack Area

SABINE PASS LIQUEFACTION PROJECT

Cameron Parish, Louisiana

Monthly Progress Report
February 2020

Table of Contents

1.	Executive Summary	1
2.	Project Highlights	1
3.	Environmental, Safety, and Health Progress	1
4.	Schedule	1
5.	Construction and Start up	2
6.	Permitting and Environmental	3
7.	Progress Pictures	4

1. Executive Summary

This report covers activities for the month of February 2020.

Bechtel continues to progress the project and is now at 52.4% complete against the plan of 49.5% through February 2020. Currently, Engineering is 93.0% complete against, Procurement is 77.2% complete, Subcontracts is 38.5% complete, and Construction is 12.8% complete.

2. Project Highlights

During the month of February, Construction completed HVAC foundations at the Compressor Substation area and pedestals in the Hot Oil Surge Drum area and Condensate Stabilization area. Area paving was completed in the Amine Storage and Thermal Oxidizer area. Erection of structural steel commenced in the Amine Storage and Thermal Oxidizer area and continued in the Cryo Rack, Propane Condenser Rack, AGRU Area, and Heavies Removal Unit. Hockey-stick pipe erection commenced in the Compressor area, with aboveground pipe now progressing in seven separate areas. The propane substation and seven other pieces of equipment were set this month.

3. Environmental, Safety, and Health Progress

During the month of February, the following safety events occurred:

	Near Miss		First Aid		Recordable		Lost Time	
	Month	ITD	Month	ITD	Month	ITD	Month	ITD
Bechtel	0	2768	5	3813	0	113	0	15
Subcontractor	0	123	0	239	0	9	0	1
Total	0	2891	5	4052	0	122	0	16

4. Schedule

Bechtel continues to progress the project and is now at 52.4% complete against the plan of 49.5% through February 2020. Currently, Engineering is 93.0% complete against, Procurement is 77.2% complete, Subcontracts is 38.5% complete, and Construction is 12.8%.

5. Construction and Start up

Activities by Area		
Area	Activities in February	Planned Work for March
Train 6	<ul style="list-style-type: none"> Completed concrete foundations for HVAC equipment in the Compressor Substation Area and commenced concrete foundations at Amine Regeneration Area Completed concrete pedestals at Ethylene Cold Box and north side of Mercury Removal and Dehydration Area, Hot Oil Surge Drum Area, Condensate Stabilization Area and H2S Removal Area Completed area paving at Amine Storage and Thermal Oxidizer Area Completed erection of structural steel in E-W OSBL Pipe Rack and commenced erection of structural steel in Amine Storage and Thermal Oxidizer Area Commenced installation of aboveground pipe for Compressor Area and E-W OSBL Piperack Commenced pneumatic testing of hockey-stick pipe for Compressor Area Set Propane Substation on foundation Commenced cable tray installation in E-W OSBL Pipe Rack Completed installation of sole plates for compressors in Methane section of Compressor Area Set Debutanizer Reboiler, Debutanizer Reflux Drum and Debutanizer Feed Heater in Heavies Removal Unit Set Feed Gas Heater in the Inlet Gas Area Set Lean Solvent Filter, Lean Solvent After Filter and Carbon Treater in Amine Storage and Thermal Oxidizer Area Commenced HVAC and Duct installation in Compressor and Propane Substation Areas 	<ul style="list-style-type: none"> Complete concrete foundations for HVAC equipment at the Propane Substation Area and Amine Regeneration Area Complete concrete pedestals at Acid Gas Removal Area and South side of Mercury Removal and Dehydration Area, and commence at Thermal Oxidizer Area Complete area paving at North Side of Mercury Removal and Dehydration Area Complete erection of structural steel in North leave-out of Cryo Piperack and AGRU Piperack, and commence erection of structural steel in East Wall of Compressor Area Commence installation of aboveground pipe for upper elevations of Cryo Piperack Area Complete installation of sole plates for compressors in Ethylene section of Compressor Area Set Debutanizer, LS Propane HRC Reflux Chiller and HRC Heavies Reflux Drum in Heavies Removal Unit Set Regeneration Gas KO Drum in Mercury Removal and Dehydration Area Set Hot Oil and Amine Sump Drums Commence cable tray installation in Compressor Substation Area Complete HVAC and Duct installation in Compressor and Propane Substation Areas

6. Permitting and Environmental

Summary of Problems, Non-Compliances, and Corrective Actions

Date	Description
None.	

Agency Contacts/Inspections

Agency	Name	Date	Location/Activity
None.			

7. Progress Pictures



Steel Progress through Train 6



Steel and Pipe Progress at Piperack



First Hockey-stick pipe in Compressor Area



HVAC Ducting at Compressor Substation Area



Carbon Treater and Amine Surge Tank



Feed Gas Heater