

**RECEIVED**

By Docket Room at 10/01/19



Cheniere Energy, Inc.  
700 Milam Street, Suite 1900  
Houston, Texas 77002  
phone: 713.375.5000  
fax: 713.375.6000

October 1, 2019

Submitted Via DOE's Online Portal

U. S. Department of Energy  
Office of Fossil Energy - Natural Gas Regulatory Activities  
P.O. Box 44375  
Washington, DC 20026-4375

Re: Sabine Pass Liquefaction, LLC  
DOE Semi-Annual Report for Period of March 1, 2019, through August 31, 2019  
FE Docket No / Order:  
10-85-LNG / 2833  
10-111-LNG / 2961  
13-30-LNG, 13-42-LNG, and 13-121-LNG /3306, 3307, 3384 & 3669 (consolidated)  
14-92-LNG / 3595  
15-63-LNG / 3792

Pursuant to the above-referenced Orders, Sabine Pass Liquefaction, LLC ("Sabine Pass"), herein submits its semi-annual report for March 1, 2019, through August 31, 2019, describing the construction progress of the Sabine Pass Liquefaction Project. This report covers the construction and commissioning activities for Stage 3 (LNG Trains 5-6) authorized under CP13-552-000. Additionally, construction activities were completed for Condensate Storage Tank S-2302 and the third meter which were authorized under CP13-2-000. Included as **Attachment A** are the Monthly Reports for construction activities which were submitted to Federal Energy Regulatory Commission under FERC Docket Numbers CP13-552-000 and CP13-2-000 during the reporting period.

Sabine Pass Liquefaction LLC ("Sabine Pass") entered into the following long-term gas supply contracts during the period from March 1, 2019 through August 31, 2019:

- a) NAESB Base Contract for Sale and Purchase of Natural Gas ("Base Contract") and a Transaction Confirmation ("Confirmation") entered into by Sabine Pass on December 1, 2013 and May 16, 2019 (respectively) with Range Resources Appalachia, LLC for an annual contract quantity approximating 18,250,000 MMBtu;
- b) Base Contract and Confirmation entered into by Sabine Pass on March 1, 2017 and August 8, 2019 (respectively) with Indigo Minerals LLC for an annual contract quantity approximating 36,500,000 MMBtu; and
- c) Base Contract and Confirmation entered into by Sabine Pass on March 1, 2017 and August 27, 2019 (respectively) with Indigo Minerals LLC for an annual contract quantity approximating 18,250,000 MMBtu;
- d) Base Contract and Confirmation entered into by Sabine Pass on March 12, 2019 and March 28, 2019

(respectively) with EAP Ohio LLC for an annual contract quantity approximating 63,875,000 MMBtu; and

- e) Base Contract and Confirmation entered into by Sabine Pass on April 15, 2014 and August 27, 2019, amending a previous Confirmation dated June 6, 2018 (respectively) with Ascent Resources Utica, LLC for an annual contract quantity approximating 92,000,000 MMBtu during the initial five years of the supply period, and 46,000,000 MMBtu during the final five years of the supply period.

From March 1, 2019 – August 31, 2019, the following items were submitted to DOE:

- a) Novation and Amendment Agreement, dated May 22, 2019, by and among Cheniere Marketing, LLC, Sabine Pass Liquefaction, LLC, Vitol Inc. and Vitol Holding B.V. The Novation and Amendment Agreement assigns to SPL the previously submitted long-term sale and purchase agreement entered into by Cheniere Marketing, LLC and Vitol Inc. on September 14, 2018. The Novation and Amendment Agreement contains certain conditions to its effectiveness and amends certain terms of the original SPA.
- b) Amendment No. 1, dated May 3, 2019, to the previously submitted long-term sale and purchase agreement entered into by Cheniere Marketing, LLC (subsequently assigned to Cheniere Marketing International LLP) and Sabine Pass Liquefaction, LLC on August 5, 2014.
- c) Notification of assignment of Gas Nat SPA and Centrica SPA.
  - o SPA dated November 21, 2011, between Sabine Pass and Gas Natural Aproveisionamientos SDG S.A. was assigned by Gas Natural Aproveisionamientos SDG S.A. to Gas Natural Fenosa LNG GOM, Limited (“Gas Nat Fenosa”) pursuant to an instrument dated August 4, 2016. Gas Nat Fenosa has subsequently changed its corporate name to Naturgy LNG GOM, Limited.
  - o SPA dated March 22, 2013, between Sabine Pass and Centrica plc, as amended on September 11, 2015, was assigned by Centrica plc to Centrica LNG Company Limited pursuant to an instrument dated February 14, 2019.

Please call me or Taylor Johnson at 713-375-5000 if there are any questions.

Sincerely,



Karri Mahmoud  
Director, Regulatory Project Development  
Sabine Pass Liquefaction, LLC

Sabine Pass Liquefaction, LLC  
DOE Semi-Annual Report for Period March - August 2019

## **ATTACHMENT A**

# **SABINE PASS LIQUEFACTION PROJECT**

Cameron Parish, Louisiana

Monthly Progress Report  
March 2019

## Table of Contents

1.	Executive Summary .....	1
2.	Project Highlights .....	1
3.	Environmental, Safety, and Health Progress .....	1
4.	Schedule .....	1
5.	Construction and Start up .....	2
6.	Permitting and Environmental .....	2
7.	Progress Pictures .....	3

## 1. Executive Summary

This report covers March 2019 activities

Train 5 and Stage 3 OSBL are 100% complete.

A schedule for Train 6 is under development and will be provided once the baseline is established.

## 2. Project Highlights

Train 5 and Stage 3 OSBL: On March 7, 2019, Sabine Pass accepted Care, Custody, and Control of Train 5 and the Stage 3 OSBL. On March 12, 2019, Sabine Pass placed the Train 5 and the Stage 3 OSBL facilities in service.

Train 6: Construction has commenced underground firewater pipe installations and is preparing for the first concrete in April.

## 3. Environmental, Safety, and Health Progress

During the month of March, the following ES&H events occurred.

	Near Miss		First Aid		Recordable		Lost Time	
	Month	ITD	Month	ITD	Month	ITD	Month	ITD
Bechtel	0	2755	0	3752	0	112	0	14
Subcontractor	2	122	0	238	0	9	0	1
Total	2	2877	0	3990	0	121	0	15

## 4. Schedule

A schedule for Train 6 is under development and will be provided once the baseline is established.

## 5. Construction and Start up

Activities by Area		
Area	Activities in March	Planned Work for April
Train 5 & Stage 3 OSBL	<ul style="list-style-type: none"> <li>• Closed out all punch items.</li> <li>• Completed Performance Test.</li> <li>• Achieve substantial completion.</li> </ul>	<ul style="list-style-type: none"> <li>• Facilities turned over to Operations. No construction activities.</li> </ul>
Train 6	<ul style="list-style-type: none"> <li>• Continue pile driving.</li> <li>• Completed pedestals construction and backfill in R10 pipe rack</li> <li>• Completed mud mat in Compressor area</li> <li>• Commenced rebar, anchor bolts &amp; formwork in Propane mat of Compressor area (A01)</li> <li>• Commenced underground firewater pipe installations</li> </ul>	<ul style="list-style-type: none"> <li>• Continue piling activities</li> <li>• Commence pressure testing of installed underground firewater pipe</li> <li>• Commence underground amine pipe installations</li> <li>• Complete mud mat in Cryo area (D01), Inlet Gas area (G02) and Ethylene Cold Box area (H01)</li> </ul>
Condensate Tank	<ul style="list-style-type: none"> <li>• Completed the installation of the new PLC card with the engineering support.</li> <li>• Pipe painting completed.</li> <li>• Final grading and clean-up.</li> <li>• Matrix Service attained Mechanical Completion.</li> </ul>	<ul style="list-style-type: none"> <li>• Achieve final substantial completion.</li> </ul>

## 6. Permitting and Environmental

### Summary of Problems, Non-Compliances, and Corrective Actions

Date	Description
None.	

### Agency Contacts/Inspections

Agency	Name	Date	Location/Activity
None.			

## 7. Progress Pictures



*Train 5 – Aerial View*



*Train 6 – Aerial View*





Train 6 – R10 Pipe Rack Pile Caps and Pedestals Complete



Train 6 – UG Firewater Pipe Staging in R10 Rack ready for Installation



Train 6 – Installed UG Firewater Pipe



Train 6 – Propane Mat Rebar and Formwork Compressor Area

# **SABINE PASS LIQUEFACTION PROJECT**

Cameron Parish, Louisiana

Monthly Progress Report  
April 2019

## Table of Contents

1.	Executive Summary .....	1
2.	Project Highlights .....	1
3.	Environmental, Safety, and Health Progress .....	1
4.	Schedule .....	1
5.	Construction and Start up .....	2
6.	Permitting and Environmental .....	2
7.	Photos .....	3

## 1. Executive Summary

This report covers activities during the month of April 2019.

Bechtel continues to develop its Stage 4 baseline schedule and will report Stage 4 percent complete once the baseline is established.

## 2. Project Highlights

Train 6 construction has commenced by starting the installation of the underground firewater, amine and hot oil piping and progressing first major concrete pours for the refrigeration compressor foundations.

## 3. Environmental, Safety, and Health Progress

During the month of April, the following ES&H events occurred.

	Near Miss		First Aid		Recordable		Lost Time	
	Month	ITD	Month	ITD	Month	ITD	Month	ITD
Bechtel	0	2757	1	3753	0	112	0	14
Subcontractor	2	122	0	238	0	9	0	1
Total	2	2879	1	3991	0	121	0	15

## 4. Schedule

A schedule for Train 6 is under development and will be provided once the baseline is established.

## 5. Construction and Start up

Activities by Area		
Area	Activities in April	Planned Work for May
Train 6	<ul style="list-style-type: none"> <li>Achieved 1<sup>st</sup> concrete pour of Propane base in Compressor area</li> <li>Commenced concrete columns for Propane section in Compressor area</li> <li>Commenced rebar, anchor bolts and formwork for Methane mat in Compressor area and Cryo area</li> <li>Commenced underground amine and hot oil pipe installations</li> <li>Commenced formwork and rebar at hot oil sump</li> <li>Completed excavation of amine sump</li> <li>Completed seal slab for Cryo area, Propane Refrigeration area, Ethylene Cold Box and Inlet Gas areas</li> </ul>	<ul style="list-style-type: none"> <li>Complete remaining concrete for Methane and Ethylene mats in Compressor area</li> <li>Complete concrete columns at Propane section of Compressor area</li> <li>Commence columns rebar and formwork at Methane and Ethylene sections of Compressor area</li> <li>Complete base slab concrete for Cryo Rack area</li> <li>Commence construction of pedestals in Cryo Rack area</li> <li>Commence concrete for base slabs and walls of Hot Oil and Amine sumps</li> <li>Complete concrete base slab at Mercury Removal area</li> <li>Complete underground Firewater pipe at western edge of Propane Condensers area</li> <li>Commence cathodic protection works on underground Amine and Hot Oil pipe</li> </ul>
Condensate Tank	<ul style="list-style-type: none"> <li>Achieve final substantial completion.</li> </ul>	<ul style="list-style-type: none"> <li>Place in service once FERC approval received.</li> </ul>

## 6. Permitting and Environmental

### Summary of Problems, Non-Compliances, and Corrective Actions

Date	Description
None.	

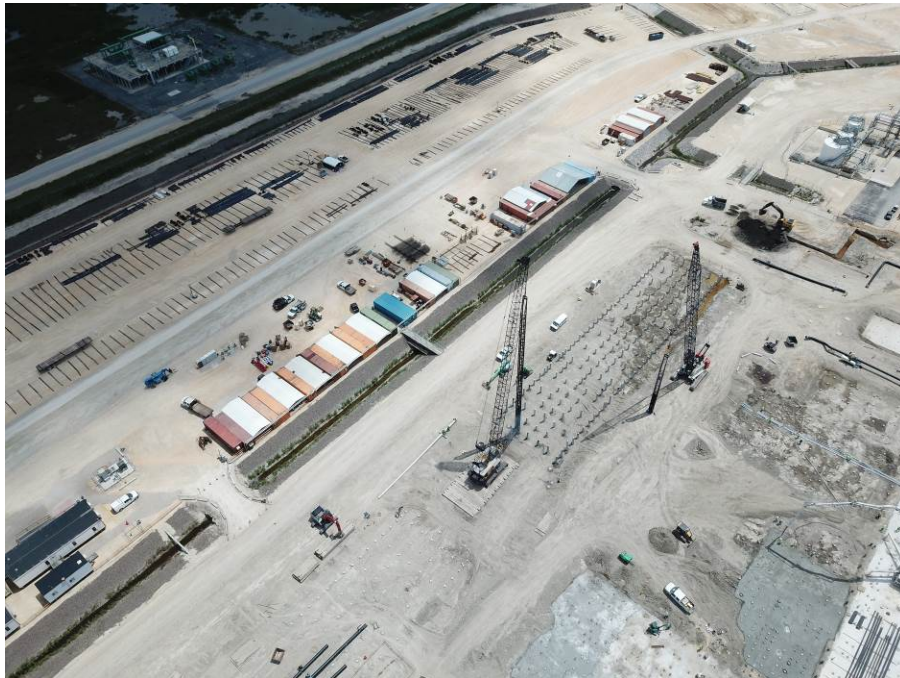
### Agency Contacts/Inspections

Agency	Name	Date	Location/Activity
None.			

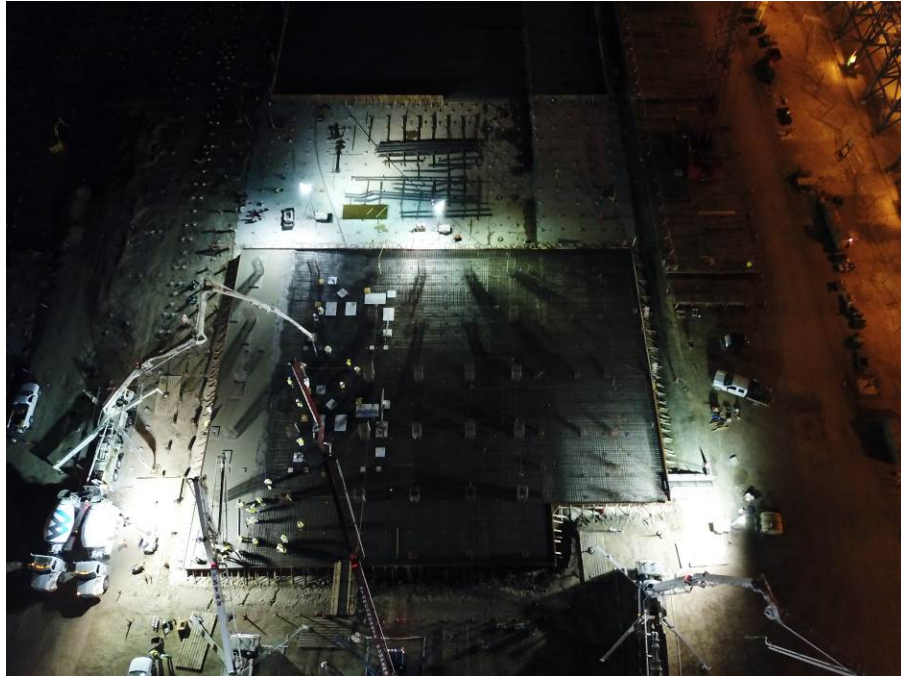
## 7. Photos



Train 6 – Aerial View



Final Piling works in Propane Rack



1<sup>st</sup> Concrete Pour at Propane Section of Compressor Area



Concrete Columns in Propane Section of Compressor Area



# **SABINE PASS LIQUEFACTION PROJECT**

Cameron Parish, Louisiana

Monthly Progress Report  
May 2019

## Table of Contents

1.	Executive Summary .....	1
2.	Project Highlights .....	1
3.	Environmental, Safety, and Health Progress .....	1
4.	Schedule .....	1
5.	Construction and Start up .....	2
6.	Permitting and Environmental .....	2
7.	Photos .....	3

## 1. Executive Summary

This report covers activities during the month of May 2019.

## 2. Project Highlights

Train 6 construction has commenced by starting the installation of the underground firewater, amine and hot oil piping and progressing first major concrete pours for the refrigeration compressor foundations.

## 3. Environmental, Safety, and Health Progress

During the month of May, the following ES&H events occurred.

	Near Miss		First Aid		Recordable		Lost Time	
	Month	ITD	Month	ITD	Month	ITD	Month	ITD
Bechtel	2	2760	10	3763	0	112	0	14
Subcontractor	3	123	0	238	0	9	0	1
Total	5	2883	10	4001	0	121	0	15

## 4. Schedule

Bechtel continues to develop its Stage 4 baseline schedule and will report Stage 4 percent complete once the baseline is established.

## 5. Construction and Start up

Activities by Area		
Area	Activities in May	Planned Work for June
Train 6	<ul style="list-style-type: none"> <li>Completed remaining concrete for Methane and Ethylene mats in Compressor area.</li> <li>Continue construction of concrete columns in compressor area and commenced equipment pad concrete and shoring activities for table top</li> <li>Poured concrete base slabs for Cryo Rack area</li> <li>Commenced rebar and formwork for Cryo Rack area and Propane Refrigeration area</li> <li>Commenced testing of underground amine and hot oil pipe</li> <li>Commenced base and wall concrete at Hot Oil sump and Amine sump</li> <li>Completed seal slab for Methane and Ethylene Cold Boxes, Heavies Removal area and Dehydration / Mercury Removal area</li> </ul>	<ul style="list-style-type: none"> <li>Continue construction of concrete columns and equipment pads in Cryo Rack area</li> <li>Commence construction of pedestals in Cryo Rack area</li> <li>Commence concrete base slabs for Propane Condenser Rack area</li> <li>Complete concrete walls at Hot Oil sump</li> <li>Complete concrete base slab at Dehydration / Mercury Removal area</li> <li>Complete seal slab at Propane Condenser Rack area, Condensate Stabilization area and AGRU Piperack area</li> <li>Commence erection of structural steel in Cryo Rack area</li> <li>Continue underground Firewater pipe installation and testing</li> </ul>
Condensate Tank	<ul style="list-style-type: none"> <li>Achieved final substantial completion.</li> </ul>	<ul style="list-style-type: none"> <li>Place in service once FERC approval received.</li> </ul>

## 6. Permitting and Environmental

### Summary of Problems, Non-Compliances, and Corrective Actions

Date	Description
None.	

### Agency Contacts/Inspections

Agency	Name	Date	Location/Activity
None.			

## 7. Photos



Train 6 – Aerial View



Concrete works in Compressor Area and Cryo Area



Concrete Columns and Equipment Pads at Propane Section of Compressor Area



Wall Construction at Hot Oil Sump



Hot Oil and Amine Underground Pipe and Sumps Progress



Aerial View of Concrete Progress

# **SABINE PASS LIQUEFACTION PROJECT**

Cameron Parish, Louisiana

Monthly Progress Report  
June 2019



## Table of Contents

1.	Executive Summary .....	1
2.	Project Highlights .....	1
3.	Environmental, Safety, and Health Progress .....	1
4.	Schedule .....	1
5.	Construction and Start up .....	2
6.	Permitting and Environmental .....	2
7.	Photos .....	3

## 1. Executive Summary

This report covers activities during the month of June 2019.

## 2. Project Highlights

During the month of June, Construction completed concrete base slabs at the Cryo Rack area and commenced the concrete pedestals. Works at the Compressor area included concrete columns and the commencement of shoring for the tabletop concrete slab in the Propane section. Underground pipe installations continued to progress well, completing in the southern and eastern sections of Train 6. Additionally, the Hot Oil Sump concrete works were completed.

## 3. Environmental, Safety, and Health Progress

During the month of June, the following ES&H events occurred.

	Near Miss		First Aid		Recordable		Lost Time	
	Month	ITD	Month	ITD	Month	ITD	Month	ITD
Bechtel	1	2761	4	3767	0	112	0	14
Subcontractor	0	123	0	238	0	9	0	1
Total	1	2884	4	4005	0	121	0	15

## 4. Schedule

Bechtel continues to develop its Stage 4 baseline schedule and will report Stage 4 percent complete once the baseline is established.

## 5. Construction and Start up

Activities by Area		
Area	Activities in June	Planned Work for July
Train 6	<ul style="list-style-type: none"> <li>Completed equipment pads at Propane section of Compressor area</li> <li>Completed 24 concrete columns in Ethylene section of Compressor area and commenced equipment pads</li> <li>Completed remaining base slabs and commenced pedestals at Cryo Rack area</li> <li>Completed base slabs at Mercury Removal Rack and Ethylene Cold Box</li> <li>Completed rebar and formwork at Propane Refrigeration area, and commenced rebar and formwork at Methane Cold Box and Propane Condenser Rack</li> <li>Completed base and wall concrete at Hot Oil sump and commenced concrete of Valve Box</li> <li>Completed base slab and commenced wall concrete at Amine sump</li> <li>Completed underground firewater pipe installation and testing on South side of Train 6 and both sides of Propane Condenser rack, and commenced installation at Northern side of Tran 6</li> </ul>	<ul style="list-style-type: none"> <li>Commence shoring for Ethylene tabletop at Compressor area</li> <li>Commence column and equipment pad concrete at Methane section of Compressor area</li> <li>Complete pedestals at Cryo Rack area</li> <li>Complete base slab for sections 4, 5 and 6 and commence pedestals at Propane Condenser Rack area</li> <li>Complete base slabs at Methane Cold Box, Propane Refrigeration area and the Ethylene Pipe Rack area</li> <li>Complete equipment foundations and pedestals at north side of the Mercury Removal area</li> <li>Complete Valve Box, underground pipe tie-in, base slab and pedestals at Hot Oil area</li> <li>Complete Amine sump and commence construction of Valve Box</li> <li>Commence erection of structural steel in Cryo Rack area</li> <li>Complete all Priority 3 underground firewater pipe</li> </ul>
Condensate Tank	<ul style="list-style-type: none"> <li>Received authorization to place in service</li> </ul>	<ul style="list-style-type: none"> <li>Place in service</li> </ul>

## 6. Permitting and Environmental

### Summary of Problems, Non-Compliances, and Corrective Actions

Date	Description
None.	

### Agency Contacts/Inspections

Agency	Name	Date	Location/Activity
None.			

## 7. Photos



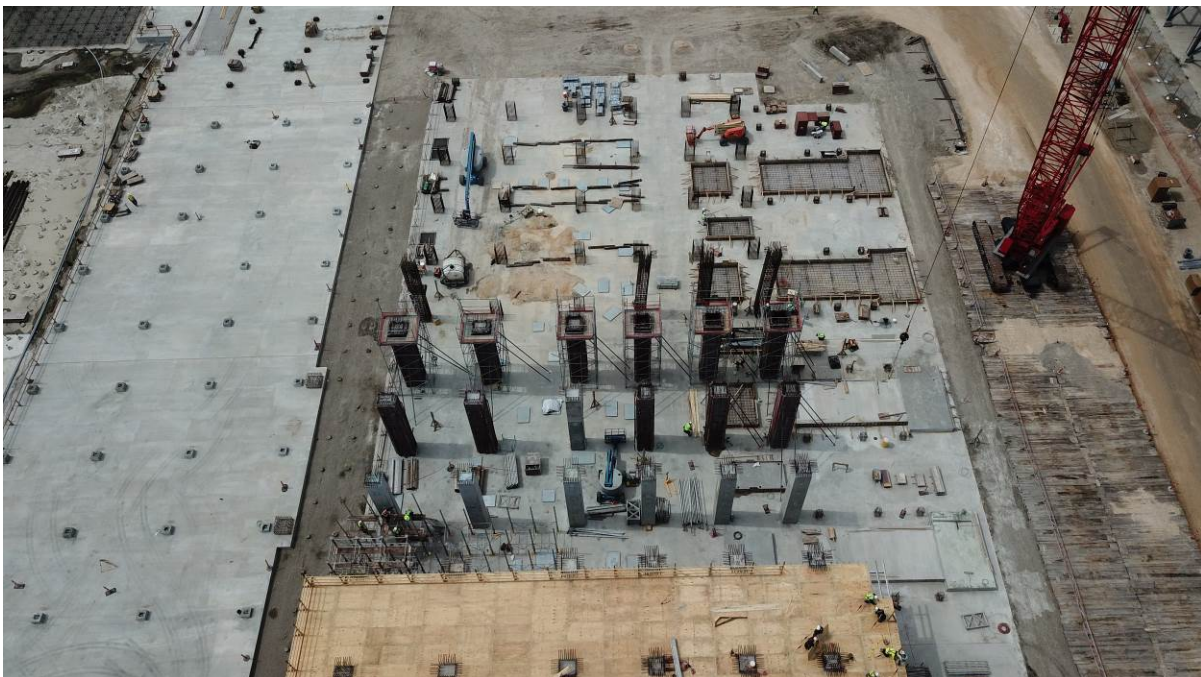
Train 6 – Aerial View



Concrete works across Train 6



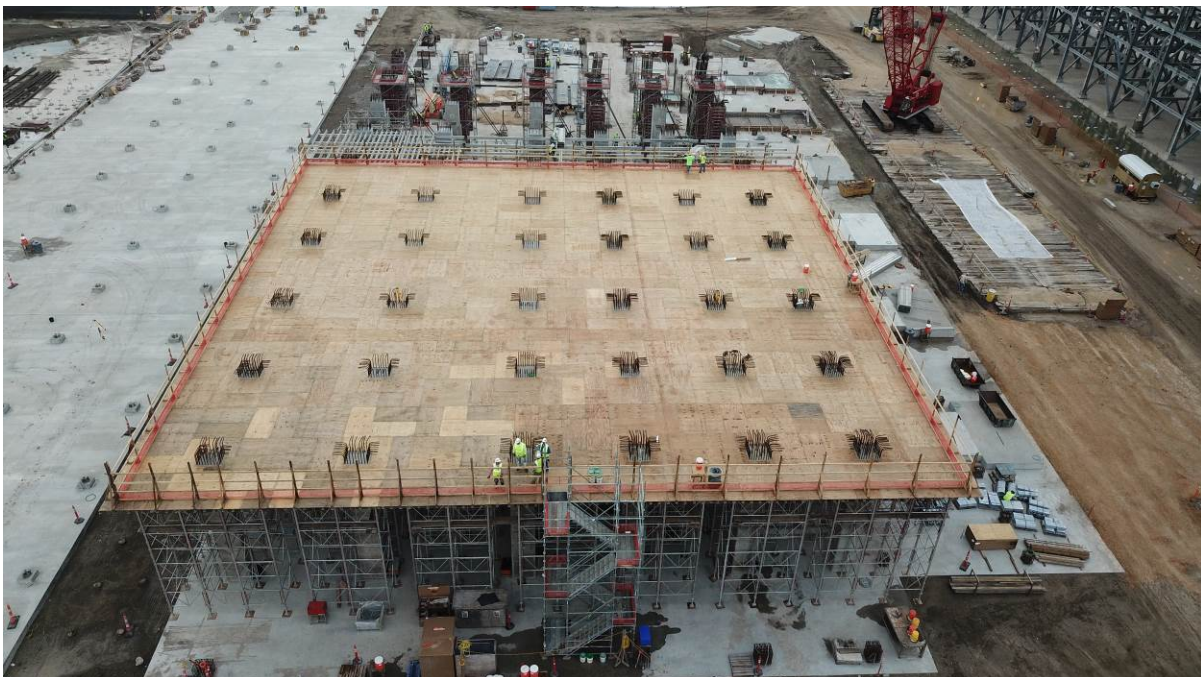
Concrete Base Slab at Section 1 of Cryo Area



Concrete Columns at Ethylene Section of Compressor Area



Hot Oil and Amine Underground Pipe and Sumps Progress



Propane Tabletop Shoring at Compressor Area

# **SABINE PASS LIQUEFACTION PROJECT**

Cameron Parish, Louisiana

Monthly Progress Report

July 2019

## Table of Contents

1.	Executive Summary .....	1
2.	Project Highlights .....	1
3.	Environmental, Safety, and Health Progress .....	1
4.	Schedule .....	1
5.	Construction and Start up .....	2
6.	Permitting and Environmental .....	2
7.	Progress Pictures .....	3



## 1. Executive Summary

This report covers activities during the month of July 2019.

## 2. Project Highlights

During the month of July, construction completed concrete base slabs at the Propane Refrigeration area and completed the concrete pedestals in the Compressor area. Other works at the Compressor area included concrete columns at the Methane section and commencement of rebar and formwork for the tabletop concrete slab in the Propane section. Erection of steel commenced in the Cryo area as well in the Mercury Dehydration area. Underground pipe installations continued to progress well, completing in the northern sections of Train 6. Additionally, the Amine Sump concrete works were completed. Preparation for installation of aboveground pipe is underway.

## 3. Environmental, Safety, and Health Progress

During the reporting month, the following ES&H events occurred:

	Near Miss		First Aid		Recordable		Lost Time	
	Month	ITD	Month	ITD	Month	ITD	Month	ITD
Bechtel	2	2763	10	3777	0	112	0	14
Subcontractor	0	123	0	238	0	9	0	1
Total	2	2886	10	4015	0	121	0	15

## 4. Schedule

Bechtel continues to develop its Stage 4 baseline schedule and will report Stage 4 percent complete once the baseline is established.

## 5. Construction and Start up

Activities by Area		
Area	Activities in July	Planned Work for August
Train 6	<ul style="list-style-type: none"> <li>Completed equipment pads at Propane section of Compressor area</li> <li>Completed tabletop shoring at Ethylene section of Compressor area and completed equipment pads</li> <li>Commenced column and equipment pad concrete at Methane section of Compressor area</li> <li>Completed base slabs at Propane Refrigeration area and the Ethylene Pipe Rack area</li> <li>Commenced erection of structural steel in Cryo Rack area and Mercury Dehydration Rack area</li> <li>Completed Amine sump and commenced construction of valve box</li> <li>Commenced aboveground pipe fabrication for Cryo Rack area</li> <li>Completed installation, testing and backfill of all priority 3 underground firewater pipe</li> </ul>	<ul style="list-style-type: none"> <li>Complete concrete tabletop at Propane section of Compressor area</li> <li>Commence tabletop rebar and formwork for Ethylene tabletop at Compressor area</li> <li>Complete column and equipment pad concrete at Methane section of Compressor area and commence shoring for tabletop</li> <li>Complete pedestals at Cryo Rack area</li> <li>Complete remaining base slabs and commence pedestals at Propane Condenser Rack area</li> <li>Complete base slabs at Methane Cold Box and the Inlet Gas area, and commence base slabs at the Compressor Substation area</li> <li>Complete concrete columns / saddles and pedestals at Propane Refrigeration area</li> <li>Complete equipment foundations and pedestals at north side of the Mercury Removal area</li> <li>Commence erection of structural steel in Propane Condenser area</li> <li>Commence installation of aboveground pipe in Cryo Rack area</li> <li>Complete valve box, base slab and pedestals at Hot Oil area</li> <li>Complete Amine and Hot Oil underground pipe pipe tie-ins to sumps</li> </ul>
Condensate Tank	<ul style="list-style-type: none"> <li>Placed in service</li> </ul>	<ul style="list-style-type: none"> <li>N/A</li> </ul>

## 6. Permitting and Environmental

### Summary of Problems, Non-Compliances, and Corrective Actions

Date	Description
None.	

### Agency Contacts/Inspections

Agency	Name	Date	Location/Activity
None.			

## 7. Progress Pictures



Compressor Area progress



Tabletop rebar progress at Propane Section of Compressor Area



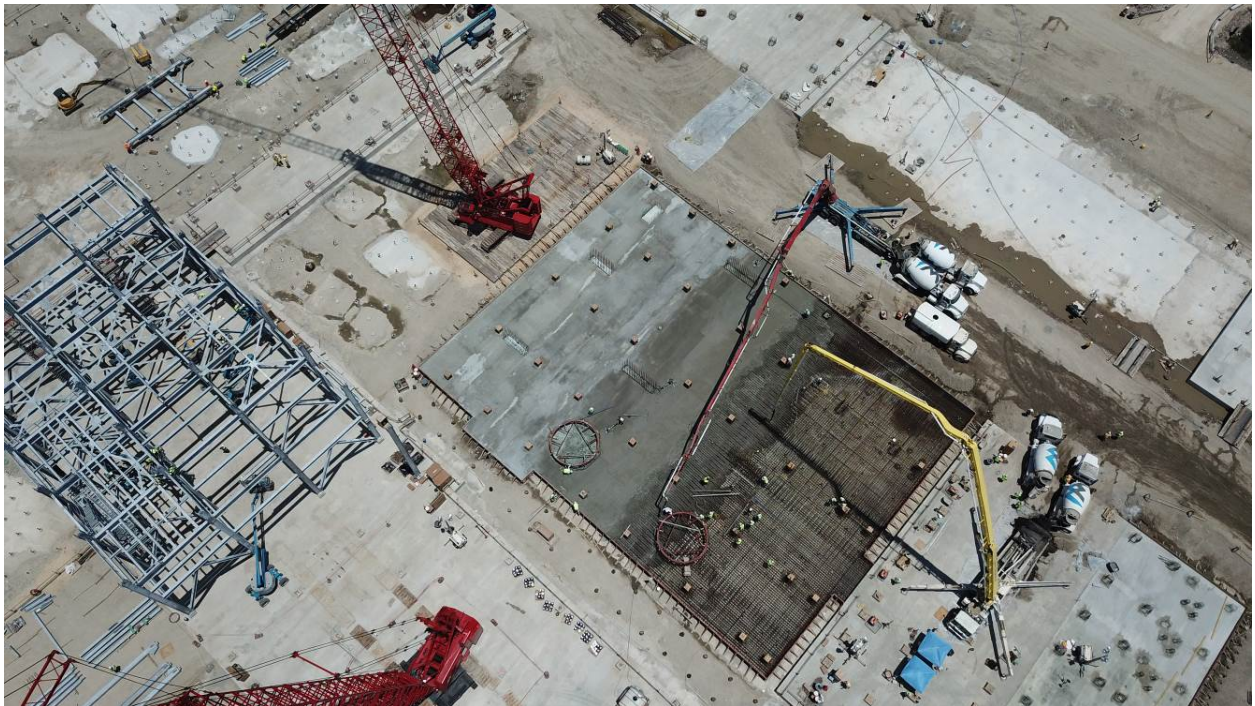
Steel Erection underway at Cryo Area



Valve Box progress at Hot Oil Sump



Aerial View of Compressor Area progress



Concrete pour in progress at Propane Refrigeration Area

# **SABINE PASS LIQUEFACTION PROJECT**

Cameron Parish, Louisiana

Monthly Progress Report  
August 2019

## Table of Contents

1.	Executive Summary .....	1
2.	Project Highlights .....	1
3.	Environmental, Safety, and Health Progress .....	1
4.	Schedule .....	1
5.	Construction and Start up .....	2
6.	Permitting and Environmental .....	2
7.	Progress Pictures .....	3

## 1. Executive Summary

This report covers activities during the month of August 2019.

Bechtel continues to progress and is 36.0% complete through August 2019. Engineering is 81.5% complete, Procurement is 51.1% complete, Subcontracts is 33.4% complete, and Construction is 4.2% complete.

## 2. Project Highlights

During the month of August, Construction completed concrete base slabs at the Cold Box and Inlet Gas areas, as well as sections 1 and 6 of the Propane Rack. Works at the Compressor area included completion of rebar and formwork for the tabletop concrete slab in the Propane section, and commencement of tabletop shoring at the Methane section. Erection of steel commenced in the Propane Rack and the first aboveground pipe was installed in the Cryo Rack. The Hot Oil Sump was completed, ready for final tie-in to the underground hot oil pipe.

## 3. Environmental, Safety, and Health Progress

During the reporting month, the following ES&H events occurred:

	Near Miss		First Aid		Recordable		Lost Time	
	Month	ITD	Month	ITD	Month	ITD	Month	ITD
Bechtel	0	2763	4	3781	1	113	1	15
Subcontractor	0	123	0	238	0	9	0	1
Total	0	2886	4	4019	1	122	1	16

## 4. Schedule

A baseline schedule is under development.



## 5. Construction and Start up

Activities by Area		
Area	Activities in August	Planned Work for September
Train 6	<ul style="list-style-type: none"> <li>Completed rebar and formwork at Propane section of Compressor area, ready for tabletop concrete</li> <li>Commenced tabletop shoring at Methane section of Compressor area</li> <li>Completed column and equipment pad concrete at Methane section of Compressor area</li> <li>Completed base slabs at Cold Box and Inlet Gas areas and sections 1 and 6 of the Propane Rack area</li> <li>Commenced concrete foundations in Compressor Substation Area</li> <li>Completed pedestals at Cryo Rack area</li> <li>Commenced erection of structural steel in Propane Rack area</li> <li>Completed construction of valve box at Hot Oil Sump</li> <li>Installed first aboveground pipe in Cryo Rack area</li> </ul>	<ul style="list-style-type: none"> <li>Complete concrete tabletop at Propane section of Compressor area</li> <li>Complete tabletop rebar and formwork for Ethylene tabletop</li> <li>Complete concrete base slabs at AGRU Rack, Fuel Gas Area, Hot Oil Surge Drum area, Heavies Removal Area, Condensate Stabilization Area and Section 3 of the Propane Rack</li> <li>Complete concrete columns / saddles and pedestals at Propane Refrigeration area</li> <li>Complete equipment foundations and pedestals at north side of the Mercury Removal area</li> <li>Commence Aboveground Pipe installation in Mercury Dehydration Area</li> <li>Complete valve box at Amine Sump</li> <li>Complete erection of Structural Steel in Mercury Dehydration Area</li> <li>Complete Amine and Hot Oil underground pipe pipe tie-ins to sumps</li> <li>Complete underground firewater pipe installation</li> </ul>

## 6. Permitting and Environmental

### Summary of Problems, Non-Compliances, and Corrective Actions

Date	Description
None.	

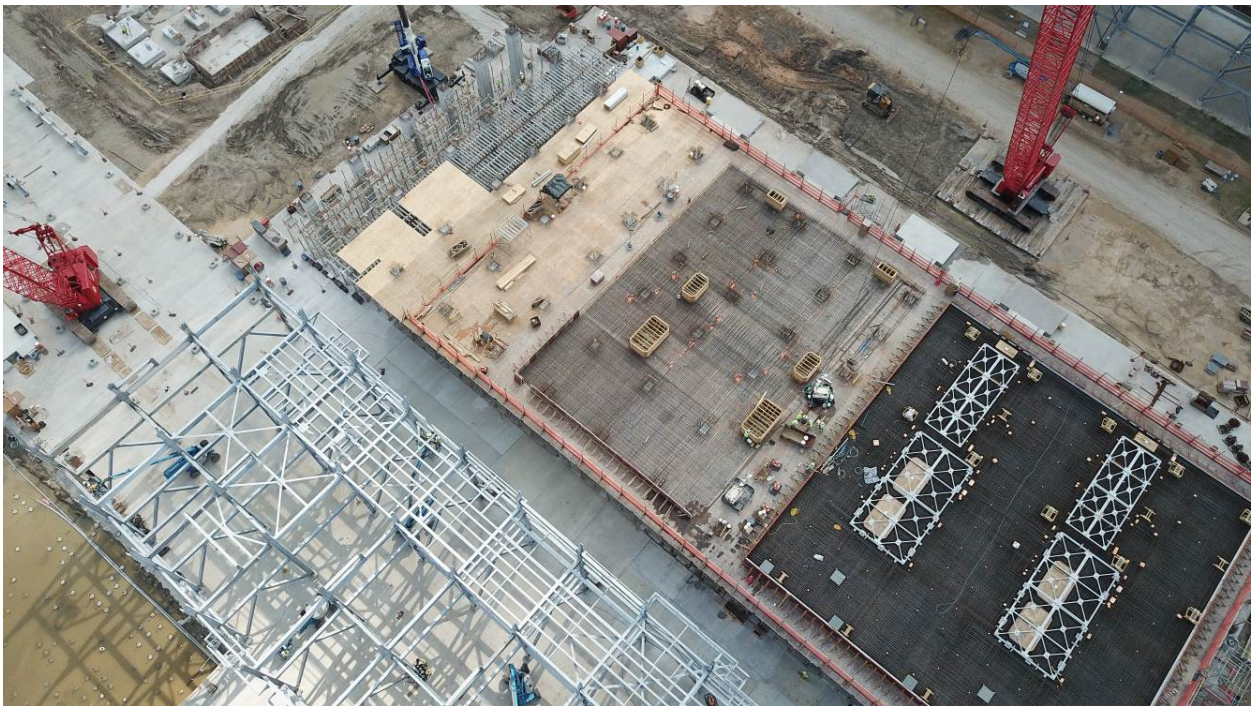
### Agency Contacts/Inspections

Agency	Name	Date	Location/Activity
None.			

## 7. Progress Pictures



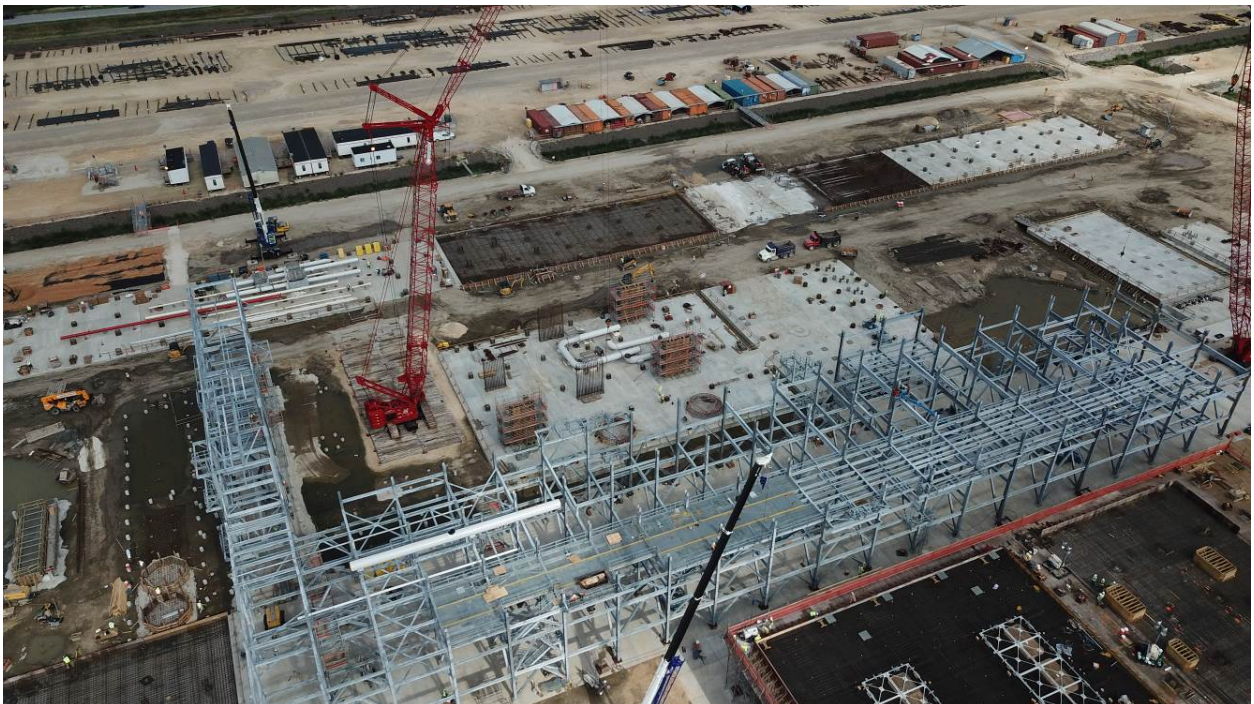
1<sup>st</sup> Aboveground Pipe in Cryo Rack Area



Tabletop progress at Compressor Area



Concrete Foundations progress at South Side of Train 6



Structural Steel progress at Cryo Area