

# Opportunities and Doing Business with the Waste Isolation Pilot Plant

Ryan Williamson  
Small Business Program Manager  
Nuclear Waste Partnership  
US DOE Waste Isolation Pilot Plant

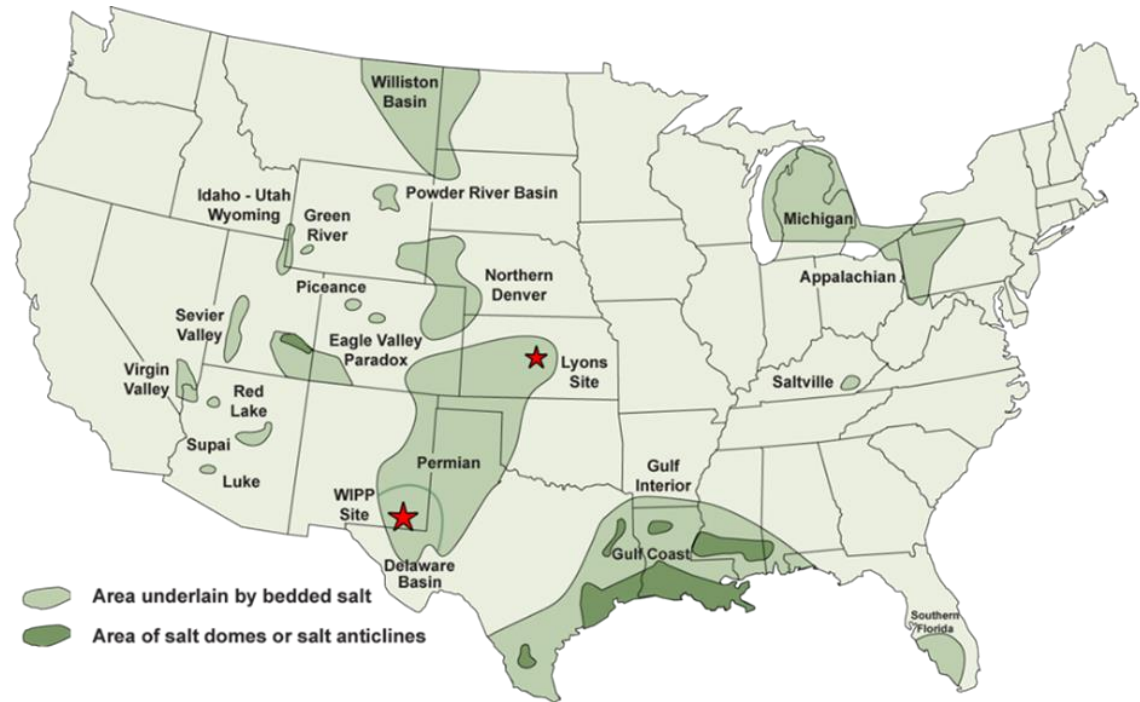
# What is WIPP?

- **WIPP is America's only deep geologic repository for the permanent disposal of defense-generated transuranic (TRU) radioactive waste left from the research and production of nuclear weapons.**



# Salt is the reason for our location

- Stable geology
- Lack of water
- Easy to mine
- Plastic quality of salt allows it to close in on the waste



WIPP is owned by the U.S. Department of Energy  
and managed and operated by contractor  
Nuclear Waste Partnership (NWP)



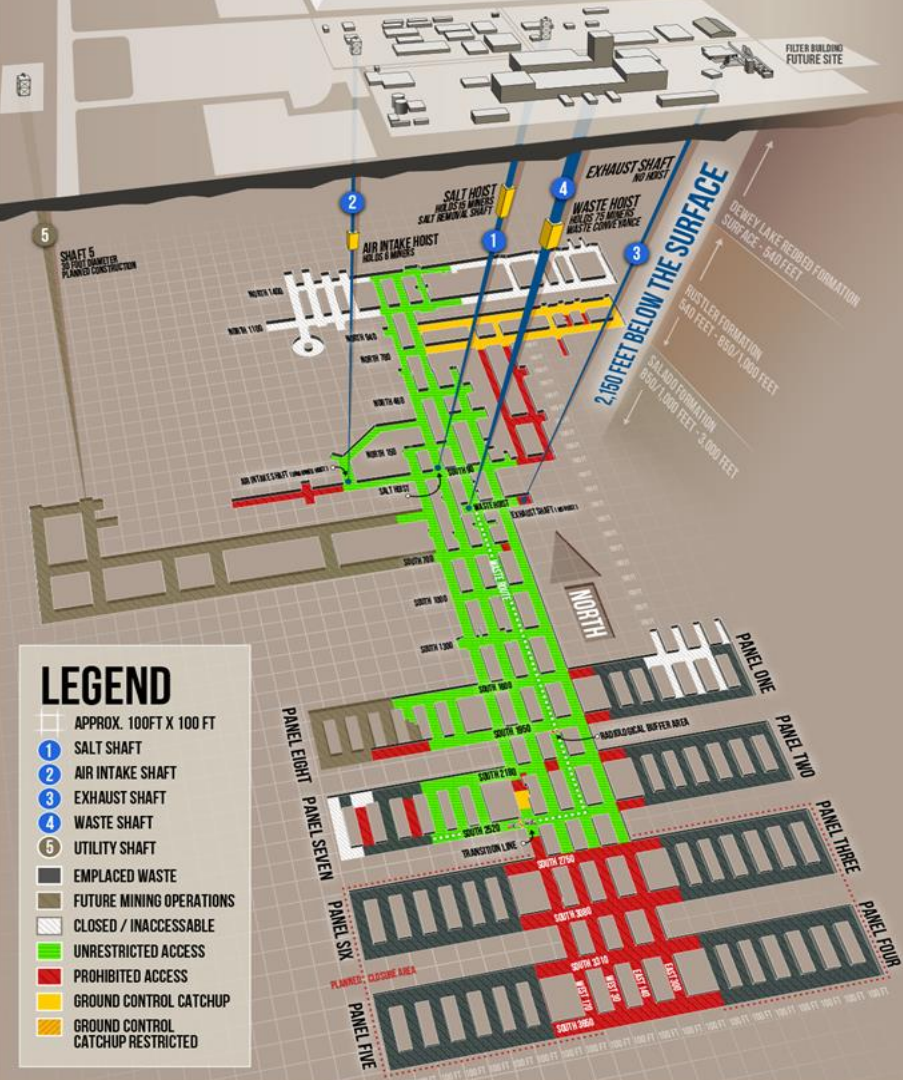
# Mining

- **Underground excavation began in 1982**
- **More than 12 miles of drift are mined underground**



# WASTE ISOLATION PILOT PLANT

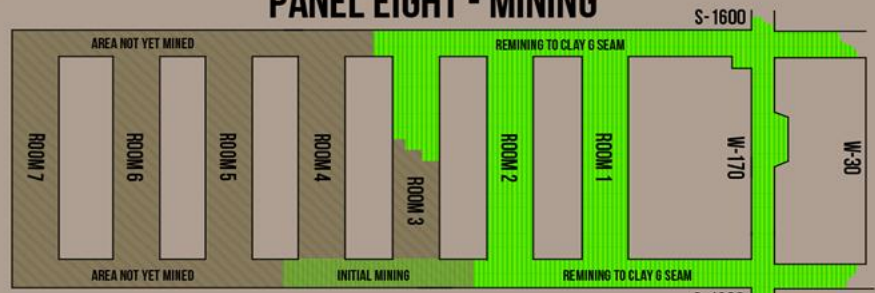
SERVING OUR NATION FOR FUTURE GENERATIONS. SAFELY DISPOSING THE NATION'S TRANSURANIC WASTE



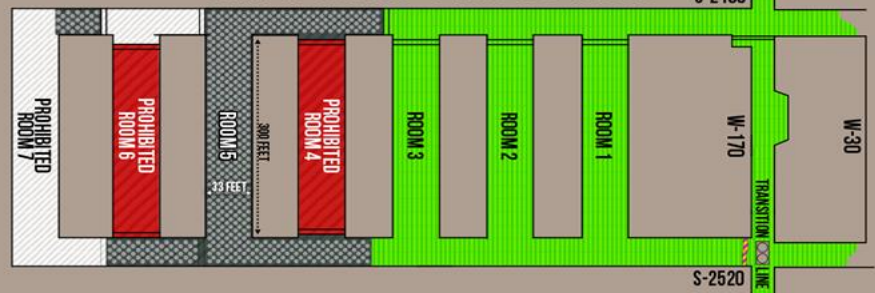
## LEGEND

- APPROX. 100FT X 100 FT
- SALT SHAFT
- AIR INTAKE SHAFT
- EXHAUST SHAFT
- WASTE SHAFT
- UTILITY SHAFT
- EMPLACED WASTE
- FUTURE MINING OPERATIONS
- CLOSED / INACCESSIBLE
- UNRESTRICTED ACCESS
- PROHIBITED ACCESS
- GROUND CONTROL CATCHUP
- GROUND CONTROL CATCHUP RESTRICTED

## ENLARGEMENT OF PANEL EIGHT - MINING



## ENLARGEMENT OF PANEL SEVEN - EMPLACEMENT



# National Cleanup Mission

Total number of TRU waste sites cleaned up to date:

22



# Preparing for Opportunities at WIPP

- **Selected Opportunities Posted to WIPP Website**

- Website: <http://www.wipp.energy.gov/nwp-procurement.asp>
- Sources Sought listings
- Open Requests for Proposals

- **Complete a NWP Supplier Application**

- Include all requested information
- List applicable North American Industry Classification Codes (NAICS)

- **Register in SAM.GOV**

- Make sure information in SAM.GOV is consistent with what is on your NWP Supplier Application



# Purchasing Methods

- **Purchasing Card (Credit Card)**
  - Commercial Off-The-Shelf Items (office supplies, industrial supplies/warehouse stock, off-site services, non-quality affecting)
- **Purchase Order/Subcontract**
  - Industrial supplies and equipment (quality requirements)
  - On-site services (construction, janitorial, IT services, pest and weed control, equipment maintenance and repair)

# Infrastructure Opportunities

- **Various infrastructure projects are ongoing and planned at the WIPP site**
  - Pond liner and repair
  - Public address system improvements
  - New air intake shaft
- **Nuclear Quality Assurance (NQA-1) program required for some projects**
- **Check WIPP webpage**
  - Sources sought postings
- **Collaborate with other businesses**
  - Consider joint-ventures and other teaming arrangements



# Fabrication and Manufacturing

- **Basic Ordering Agreements**
  - Standard Waste Boxes
  - 10-Drum Overpacks
  - Pipe Overpack Containers
  - Standard Large Boxes (SLB-2)
- **Other containers and related items**
  - Shielded Containers Assemblies
  - Removable Lid Canisters



# Equipment

- **Battery/electrical powered mining equipment**
  - Continuous Miner
  - Bolter
  - Skid-steer loader
- **Maintenance and repair**
- **Equipment rental**



# Staff Augmentation

- **Staff Augmentation – Professional and Technical**
  - Long-term subcontracts have been recently issued
  - Occasionally resources may be required on an individual subcontract basis
    - Engineering disciplines (design, project, systems)
    - Operations support (work planners, radiological control, quality assurance)
    - Business professionals (procurement, schedulers, cost analysts)
    - Safety professionals
    - Procedure writers

# Information Technology

- **Information Technology**
  - Hardware (servers & desktops, switches, cables, etc.)
  - Software (primarily licensing renewals)

# Industrial Supplies

- **WIPP orders a wide range of industrial supplies including:**
  - Electrical components
  - Safety equipment / PPE
  - Power and hand tools
  - Hoisting / rigging equipment

# Questions?

**Ryan Williamson**  
**Small Business Program Manager**  
**Nuclear Waste Partnership / WIPP**

[ryan.williamson@wipp.ws](mailto:ryan.williamson@wipp.ws)

**(575) 234-7123**

<https://www.wipp.energy.gov>