



**Updated Home Energy Professional Quality Control Inspector
and Energy Auditor Certifications: What You Need to Know**

The certifications for Energy Auditor (EA) and Quality Control Inspector (QCI) have gone through a revision. The EA remains a full-scope, ANSI-accredited certification and the QCI becomes a micro-credential. The certification scheme committee determined a QCI must know everything an EA must know, plus a little more, which is the QCI micro-credential.

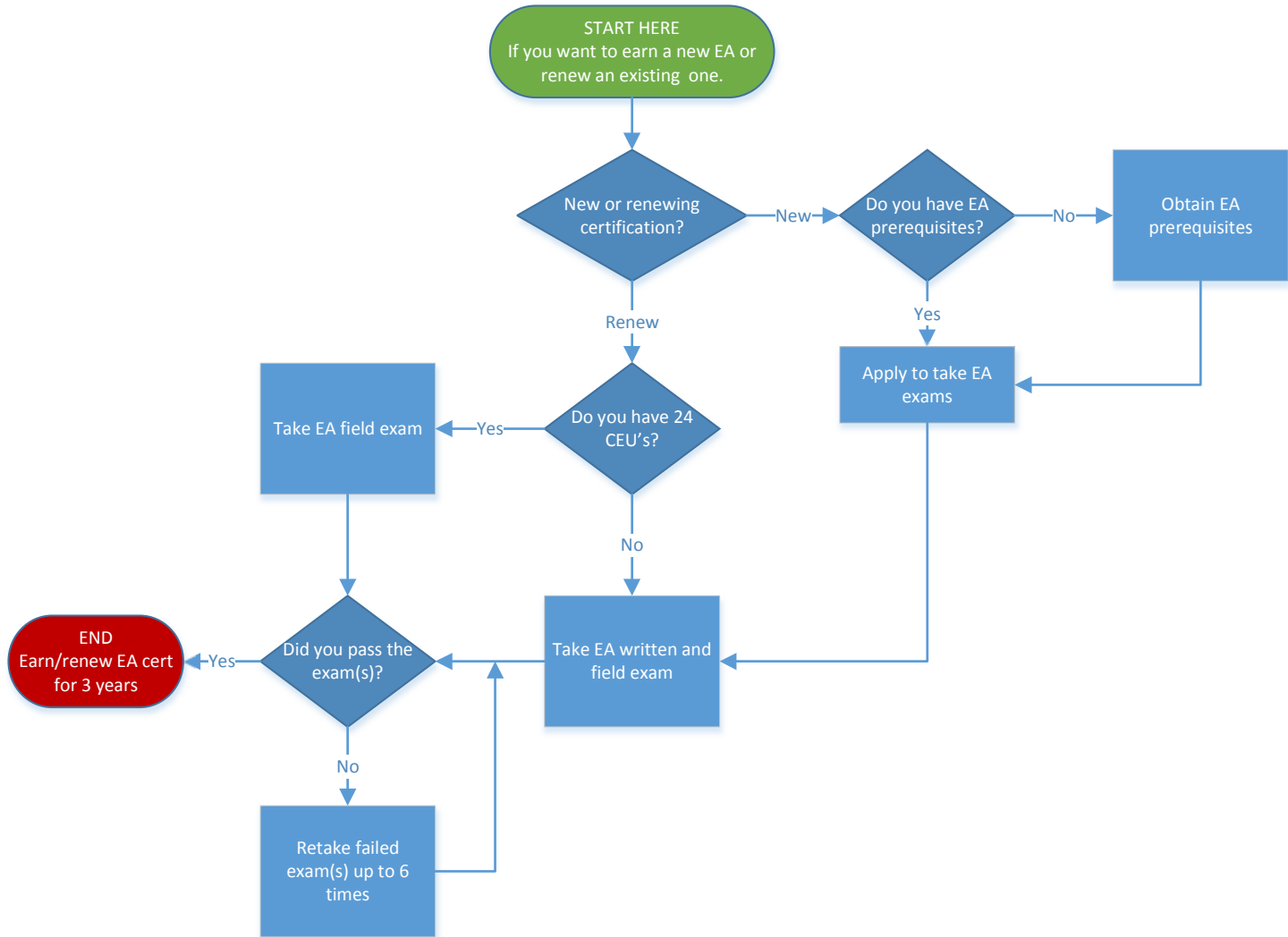
The following pages contain flowcharts that describe the certification and recertification process for the EA and QCI credentials.

HEP Energy Auditor: New and Renewing Certification Candidates

When does this apply: March 1, 2019 and beyond

Flowchart Reference:

EA-New and Renew - Final



EA Prerequisites

Experience: Minimum 1,000 hours from:

- Field/technical position within the home performance or related field, OR
- Performing audits in a building science trade

Energy Modeling:

- 10 energy models that comply with BPI 1100-2.2 (with proof) OR
- Successfully completed energy modeling training (with proof)

Additional Requirements:

20 points from any combination of the following:

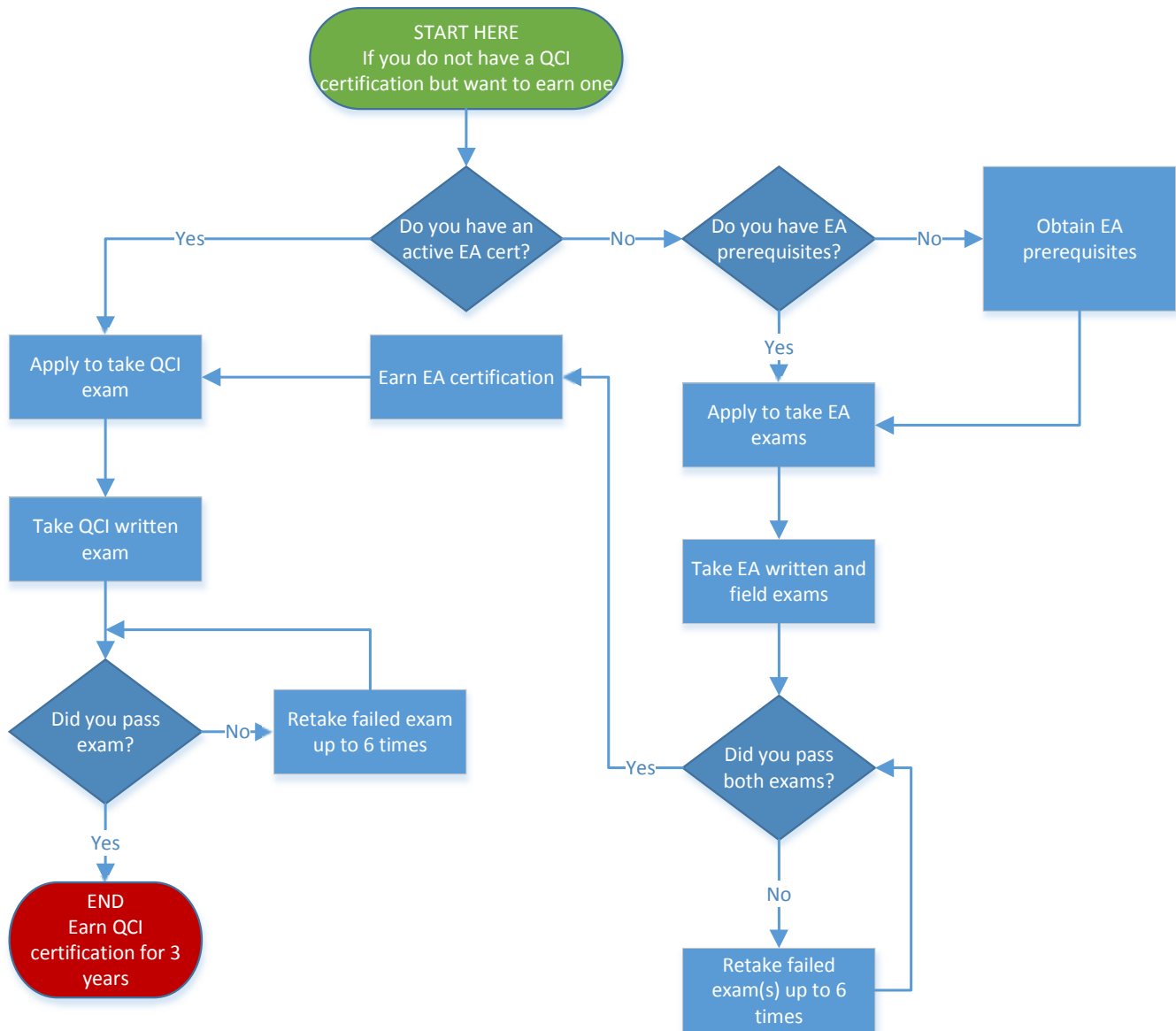
- Building trades experience: Max 10 pts, 5 pts for each 1000 hrs
- Training from industry-specific training center: Max 10 pts, 5 pts for each 40 hrs
- Related industry certifications: (e.g., RESNET, BPI, NATE, EPA, others). Max 10 pts, 5 pts per certification

HEP Quality Control Inspector: New Certification Candidates

When does this apply: March 1, 2019 and beyond

Flowchart Reference:

QCI-New-Final



QCI Prerequisite

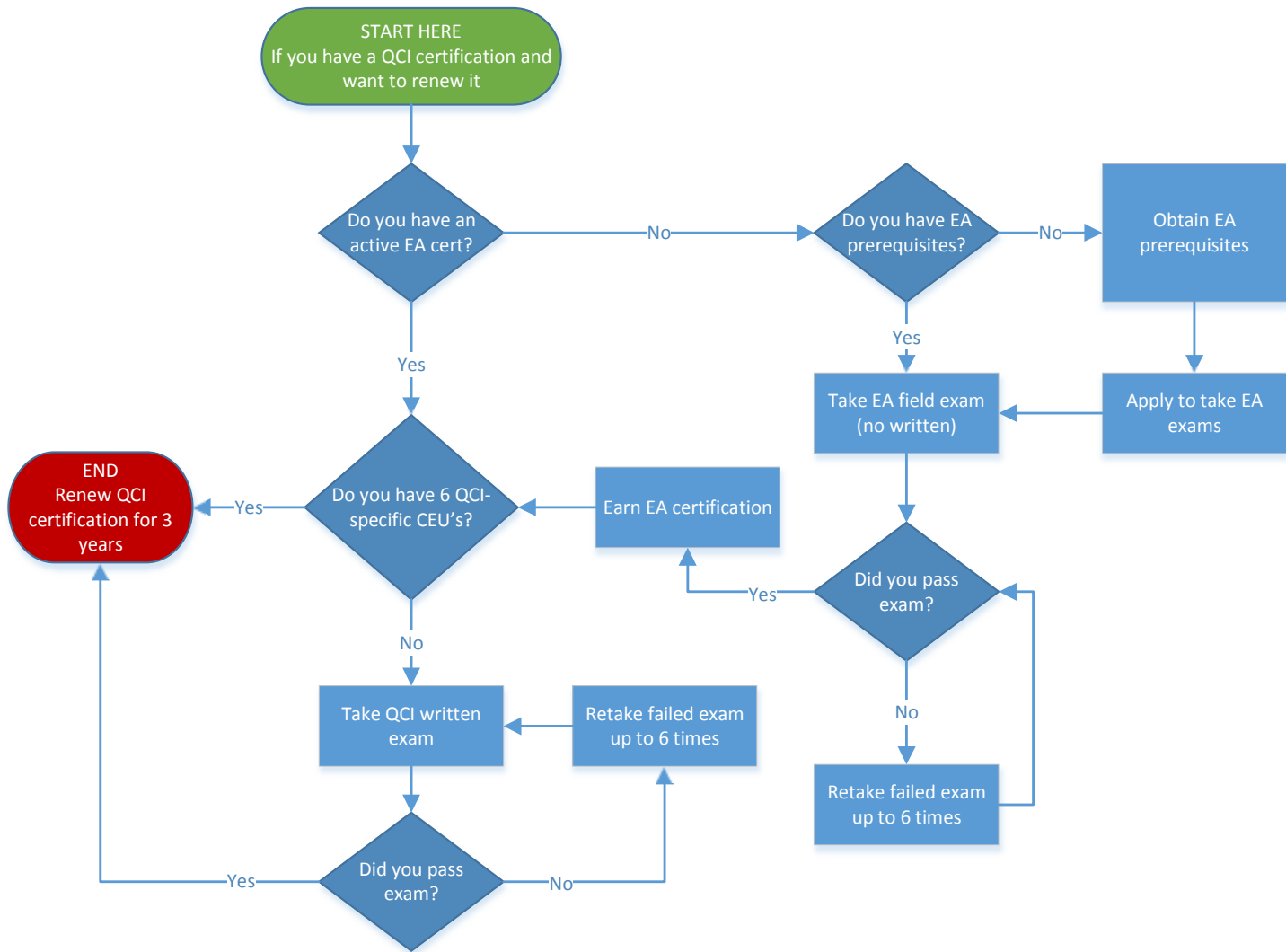
Active EA certification

HEP Quality Control Inspector: Renewing Certification Candidates

When does this apply: March 1, 2019 and beyond

Flowchart Reference:

QCI-Renew-Final



Renewing QCI Prerequisite

Active EA certification

OR

Meet EA prerequisites and pass EA field exam

New Certifications Schemes for QCI and EA FAQs

Why are the certifications being updated?

It is industry best practice to reevaluate certifications every 5–7 years. Additionally, when the references used to base the certification change significantly, the current certification exams do not match the new reference materials. In this case, both have occurred. It has been over 5 years since the exams were originally created.

Are there updates to the prerequisite criteria that will affect my recertification?

Yes, there are changes to the prerequisites for EA and QCI.

I am a QCI why am I now required to have the EA certification when I renew my QCI certification?

Based on industry validation, the U.S. Department of Energy (DOE) determined most of the knowledge base required to be a QCI is rooted in the understanding and technical abilities of an EA. The updated schemes remove the redundancy.

For the new certifications, are there CEU requirements to avoid having to re-take the written EA or QCI exam?

Yes, there are CEU requirements to bypass the EA and QCI written exams.

Can I keep my existing certification when the new certifications go into effect?

Yes, if you are currently certified to EA or QCI, your certification remains valid until the original 3-year term expires.

When do I have to recertify?

You will need to recertify within 3 years of when you were initially certified. For example, if you were initially certified in June 2016, you do not need to recertify until June 2019. At the time you recertify, you will be measured against the certification requirements/exams in place. Therefore, in June 2019, you will be measured against the new prerequisites and exams.

Is DOE still going to require QCI?

Yes. All jobs reported as complete to DOE's Weatherization Assistance Program will still need to be inspected by someone holding the QCI certification.

If I recertify my current EA or obtain the new EA, will I still get Building Analyst (BA)?

Yes, those that are certified to the existing EA or recertify to the new EA will get BA automatically.



U.S. DEPARTMENT OF
ENERGY
Office of
ENERGY EFFICIENCY &
RENEWABLE ENERGY