



U.S. DEPARTMENT OF
ENERGY

OFFICE OF
**ENVIRONMENTAL
MANAGEMENT**



2018 Individual Permit Control Measure Actions Year in Review

December 19, 2018

Don Carlson
Manager, IP Storm Water Corrective Actions
N3B Los Alamos



ENVIRONMENTAL MANAGEMENT
SAFETY ♦ PERFORMANCE ♦ CLEANUP ♦ CLOSURE



2018 IP Inspections Conducted

- 849 storm-event-driven, best-management-practice inspections conducted at 250 unique Site Monitoring Areas (SMA)
- Storm event is precipitation greater than or equal to 0.25"/30 minutes
- 1,147 ampler inspections conducted at 148 unique SMAs





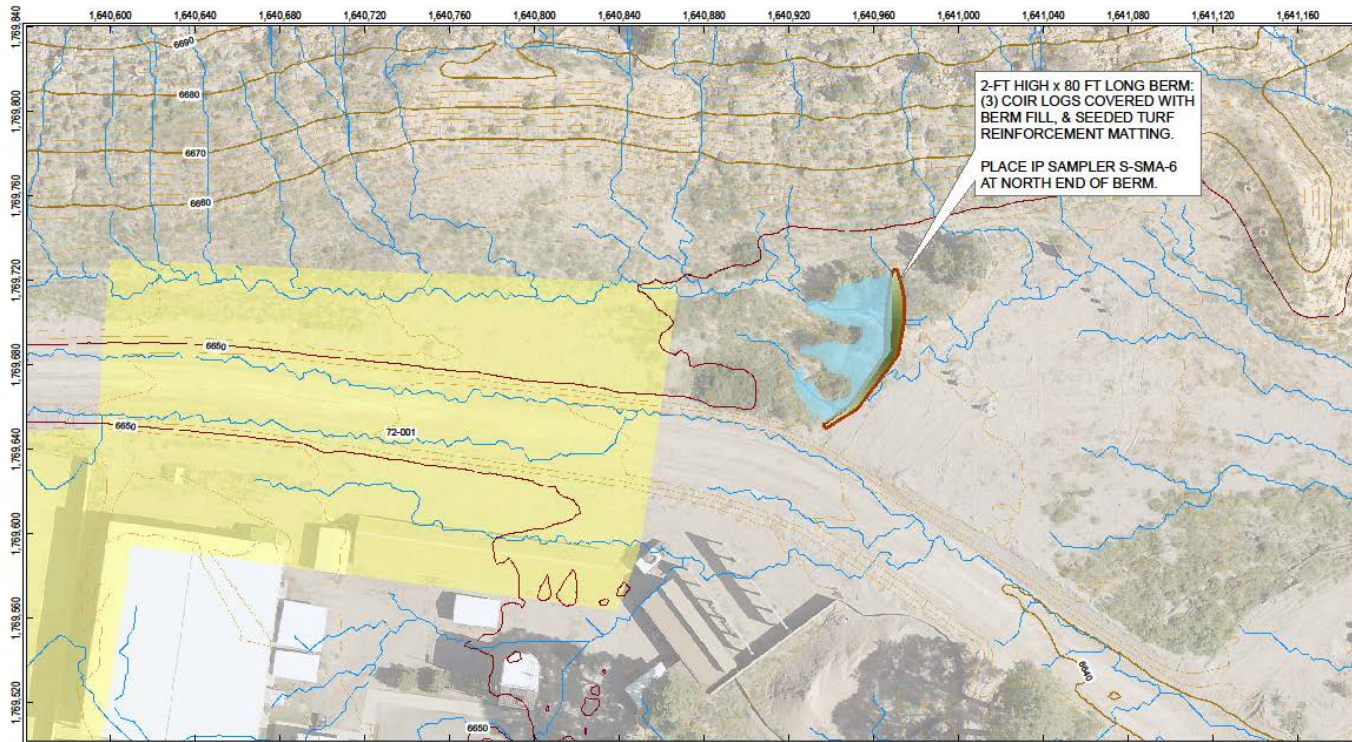
Control Measure Actions Conducted or Planned

- 6 additional controls installed in 5 unique SMAs
- 11 controls retired in 9 unique SMAs
- 16 controls replaced by 13 new installations in 12 unique SMAs
- Maintenance conducted on 18 controls in 14 unique SMAs





Upcoming Planned Construction S-SMA-6

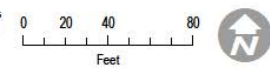


IP Enhanced Controls 2018: S-SMA-6
TA-72

New Mexico State Plane Coordinate System Central Zone (3002) North American Datum, 1983 (NAD 83)

DISCLAIMER: This map was created for work processes associated with LLCC. All other uses for this map should be confirmed with N3B staff.

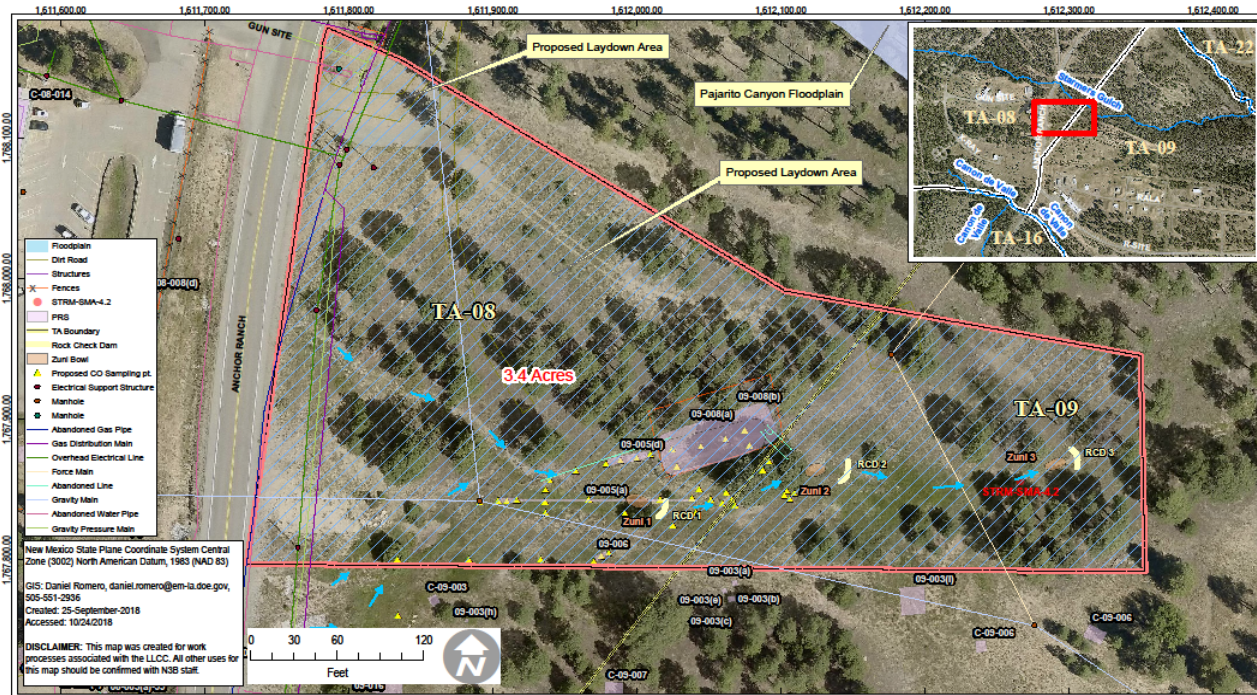
- PRS 72-001
- Flow Accumulation
- Extent of Temporary Ponding
- Grading Limits
- 10-ft Contours
- 2-ft Contours





Upcoming Planned Construction

STRM-SMA-4.2

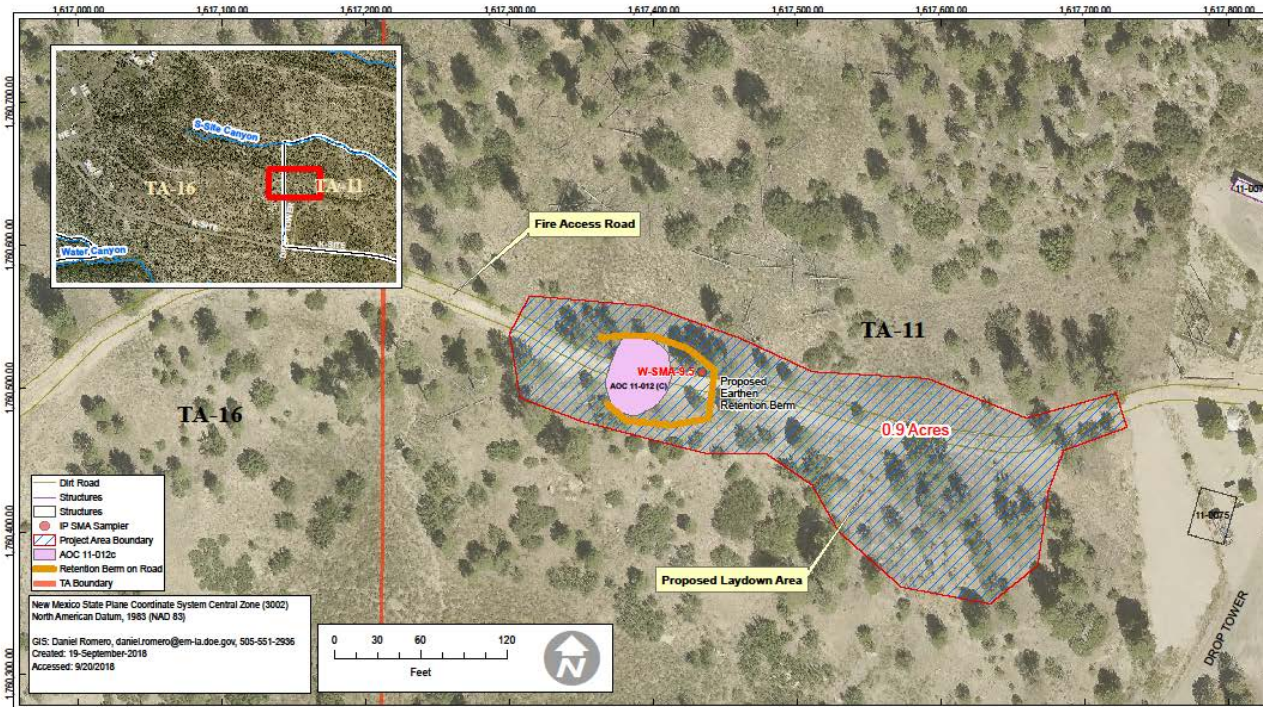


IP Enhanced Controls 2018: STRM-SMA-4.2





Upcoming Planned Construction W-SMA-9.5



IP Enhanced Controls 2018: W-SMA-9.5





U.S. DEPARTMENT OF
ENERGY

OFFICE OF
**ENVIRONMENTAL
MANAGEMENT**



Questions?



ENVIRONMENTAL MANAGEMENT
SAFETY ♦ PERFORMANCE ♦ CLEANUP ♦ CLOSURE

Prepared by Los Alamos Legacy Cleanup Contractor N3B Los Alamos
on behalf of DOE's Environmental Management Los Alamos Field Office

