

WE ARE CITIZEN POTAWATOMI NATION

THREE BRANCHES OF GOVERNMENT



TOTAL AREA

900 SQUARE
MILE AREA

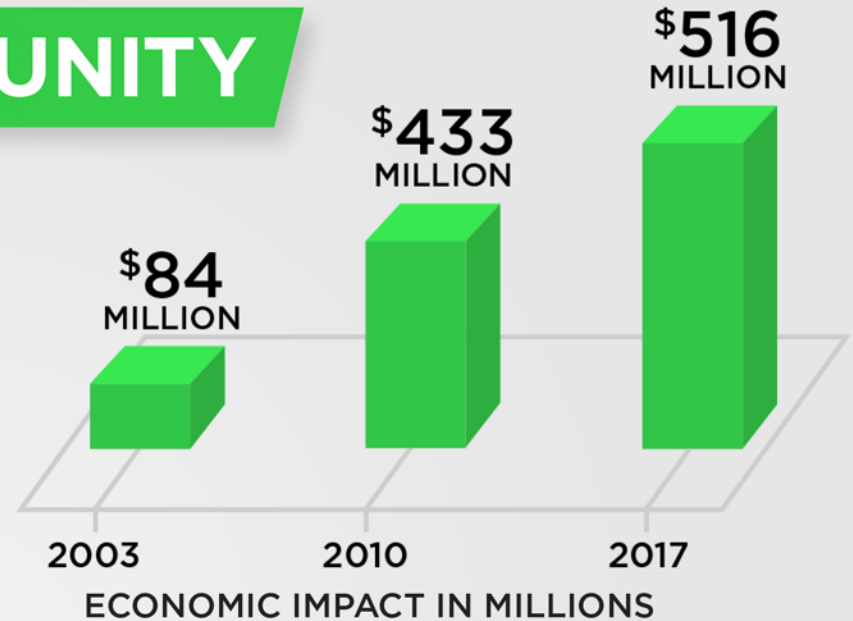
The Citizen Potawatomi Nation is the federally-recognized government of the Citizen Potawatomi people and exercises governmental jurisdiction in the 900 square mile area. Government leadership consists of a three person executive committee and a 16 person legislature representing more than 33,792 tribal citizens.

IMPACT IN OUR COMMUNITY

100%



Citizen Potawatomi Nation has created 7 of every 10 jobs in Shawnee since 2003.



100 percent of every sales tax dollar collected by Citizen Potawatomi Nation is spent on government services such as roads, services for citizens, healthcare, education, emergency response and job creation.



Tribal operations support more than 3,000 jobs in Pottawatomie County and another 400 in Oklahoma County.



More than \$400 million in Federal dollars returned to Oklahoma for roads, bridges, public safety, education and community development since 2007.



\$9 million in charitable contributions in 2017.



\$4.1 million paid to the State of Oklahoma in exclusivity fees in 2016.

JOHN “ROCKY” BARRETT

TRIBAL CHAIRMAN



John A. Barrett, Jr. is a native of Shawnee, Oklahoma and a graduate of Shawnee High School. His Potawatomi name is Keweoge, meaning “He leads them home.” Chairman Barrett has served as an elected official for the Citizen Potawatomi Nation since 1973 when he was first elected as Vice-Chairman. Tribal Chairman since 1985, Barrett is the eighth generation of his family to serve in elected office for his Tribe. Under his leadership, the Nation has gone from having assets totaling just \$550 and less than three acres of land to an entity having an economic impact exceeding \$550 million.

During Chairman Barrett’s administration, the Citizen Potawatomi Nation has experienced more than 15 percent average annual growth for more than 20 consecutive years. With more than 2,500 employees, Citizen Potawatomi Nation is the largest employer in Pottawatomie County, Oklahoma. He serves as the Chief Executive of the Tribe, presiding over the 16-member Tribal Legislature that enacts the laws and ordinances under which it is governed. His elected position as Tribal Chairman also requires him to direct the tribe’s administrative functions and commercial activities. He was instrumental in the

creation and adoption of the Citizen Potawatomi Nation’s current constitution and statutes which have led to the Nation’s extended period of stability and progress.

He has guest lectured at Harvard University for the Harvard Project on American Indian Economic Development and as guest lecturer at the Banff Center in Banff, Alberta, Canada to the assembled Canadian First Nations on the same topics. He serves on the International Advisory Council of the Native Nations Institute founded by the Morris Udall Foundation at the University of Arizona and the Harvard Project on American Indian Economic Development. He served as a delegate of the United States Federally Recognized Tribes to the United Nations Committee on the Rights of Indigenous Peoples at The Hague, Switzerland, which provided the International Declaration on the Rights of Indigenous People approved by the United Nations Committee on Human Rights and the United Nations General Assembly.

LINDA CAPPS

VICE-CHAIRMAN



As Vice-Chairman of Citizen Potawatomi Nation, Linda Capps holds the second-highest elected position for approximately 33,000 tribal members. Vice-Chairman Capps received a Bachelors of Arts in Education from the University of Science and Arts of Oklahoma in 1975. She also attained her Masters of Science in Education from the University of Central Oklahoma in 1986. In 2014, she was awarded an Honorary Doctorate in Humanities from Oklahoma Baptist University.

From 1976-1984, she worked as a high school business teacher and Indian Education Director at Dover Public Schools and Tecumseh Public Schools respectively. From 1987-1997, she served as a government contracting specialist with the Oklahoma Bid Assistance Program before joining Gordon Cooper Technology Center as an adult education instructor.

Since 1998 she has worked full time at Citizen Potawatomi Nation in conjunction with her duties as Vice-Chairman, having been an elected official at the Nation since 1987.

D. WAYNE TROUSDALE

SECRETARY-TREASURER



D. Wayne Trousdale is the elected Secretary-Treasurer for the Citizen Potawatomi Nation, a position he has held for nearly two decades.

He is a native of Pauls Valley, Oklahoma and a graduate of Pauls Valley High School. He currently resides in Norman, Oklahoma.

He is the Chief Executive Officer and President of Cedar Creek, LLC, a \$1 billion wholesale distribution company of lumber and building materials. Cedar Creek was founded in Oklahoma City in 1977 as a single location operation and has expanded its operation to 24 locations in 32 states. As a significant stockholder, he also sits on the board of directors at Cedar Creek, LLC.

Mr. Trousdale has been active in various community and civic organizations. He served on the board of directors for the Safari Club International and has served as banquet chairman for the Sportsmen Against Hunger which raised approximately \$200,000 for the underprivileged. Mr. Trousdale volunteers for the Thanksgiving meal which provides free meals for the homeless. Mr.

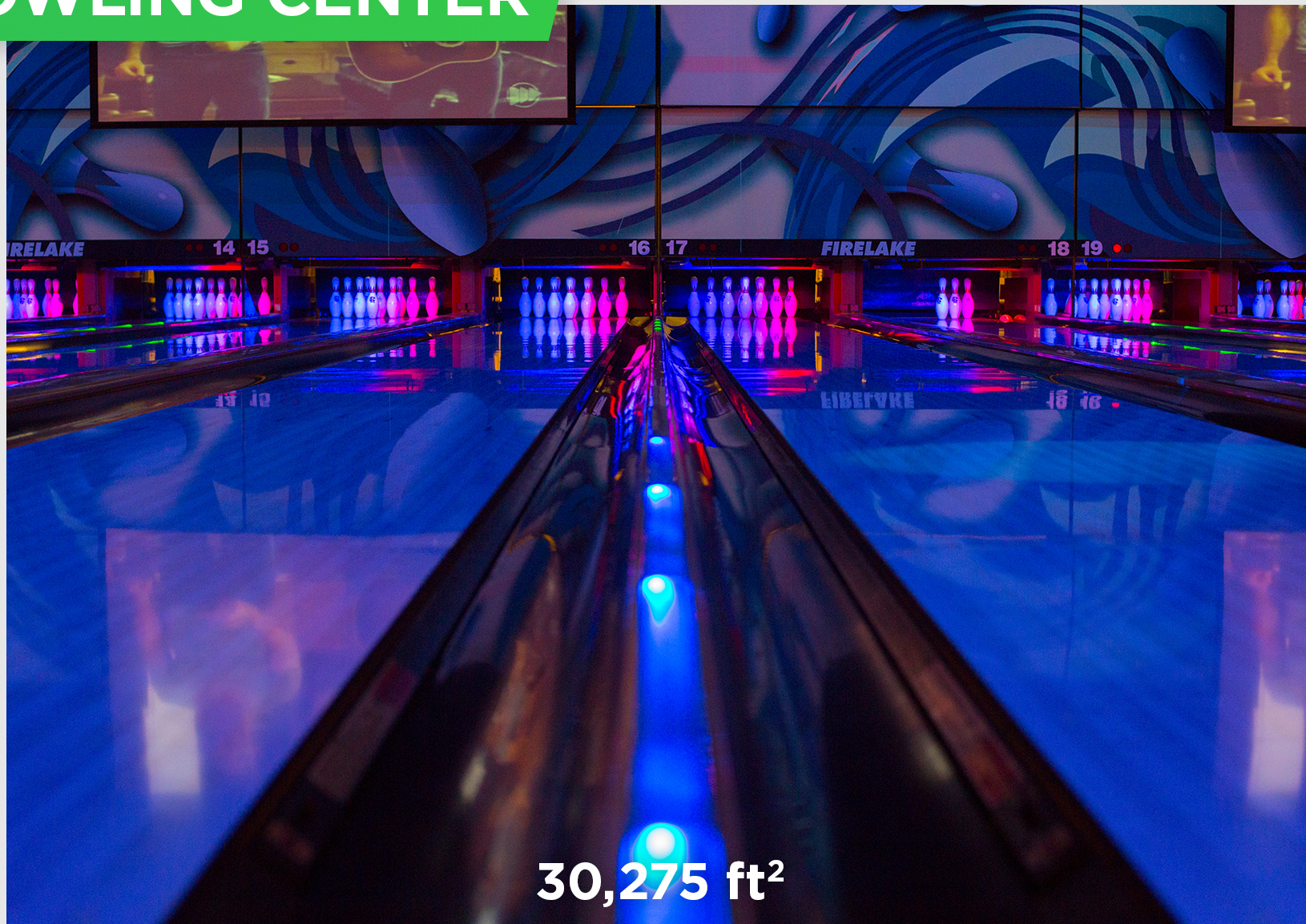
Trousdale believes in helping youth grow in Christ and has given countless time and energy to the promotion of youth services for Christ at the Pettijohn Springs Christian Camp in Madill, Oklahoma and the Church of Christ.

GRAND CASINO



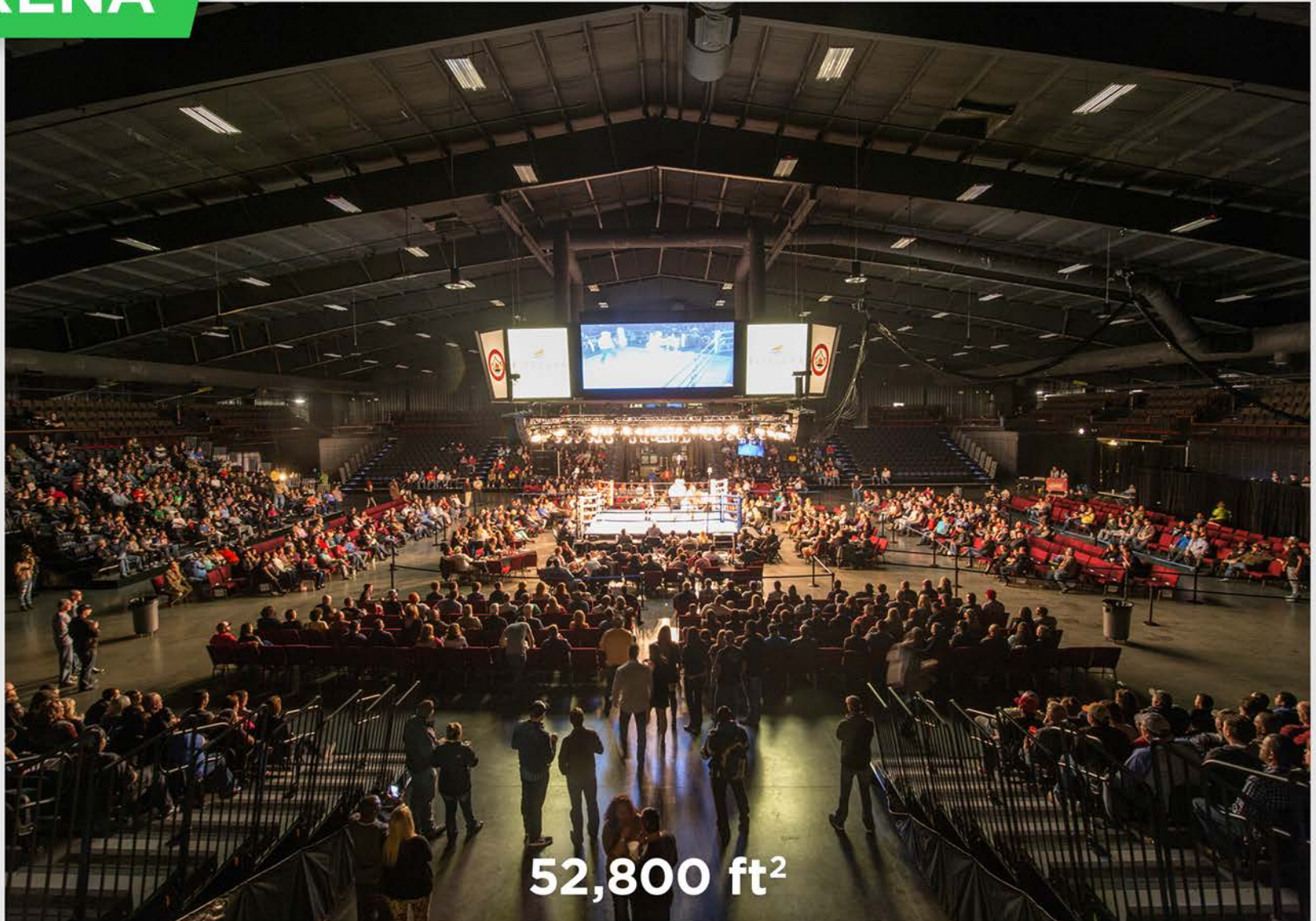
39,1503 ft²

BOWLING CENTER



30,275 ft²

ARENA



52,800 ft²

GOLF COURSE CLUBHOUSE



14,750 ft²

TRAVEL PLAZA

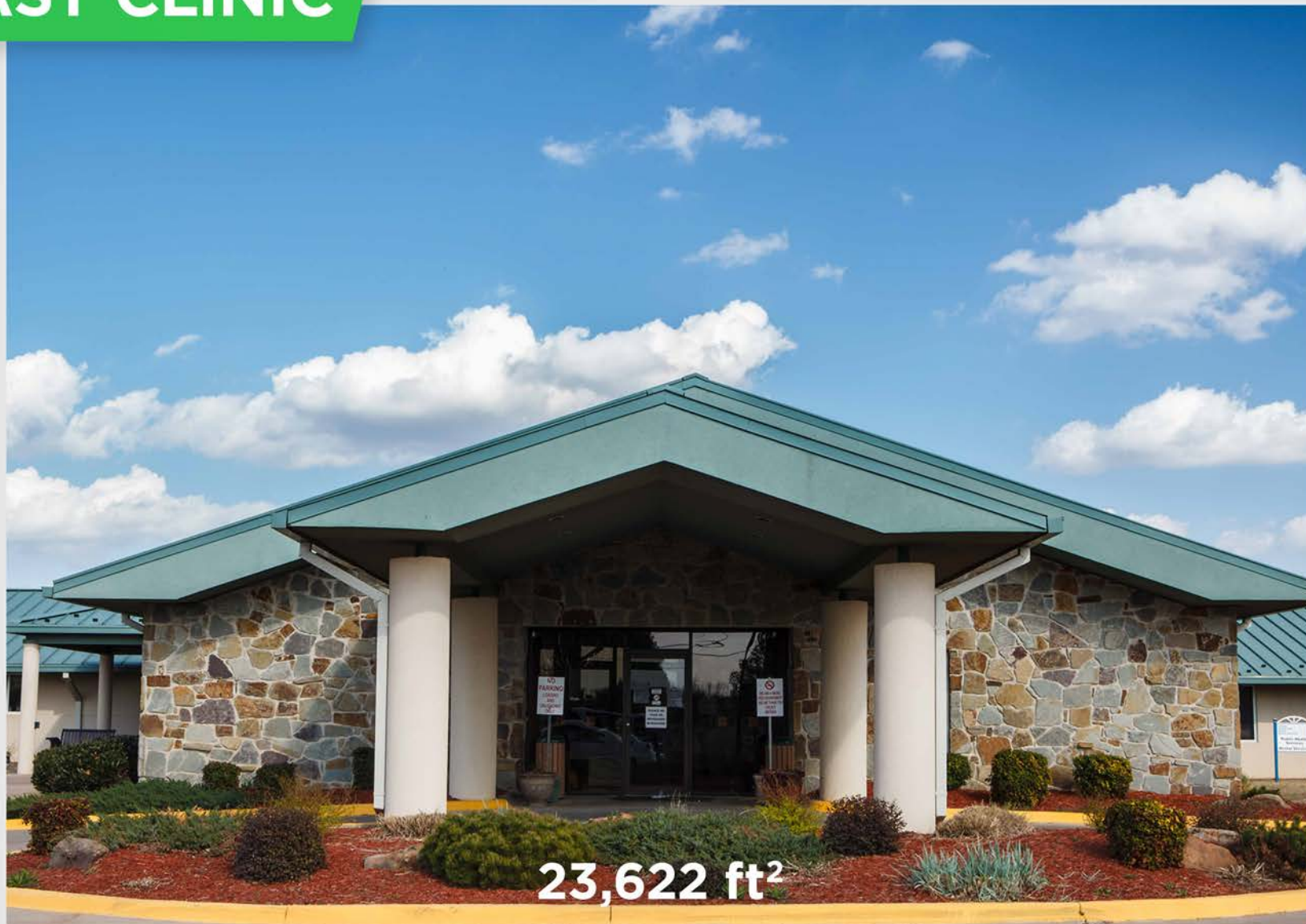


5,000 ft²

CULTURAL HERITAGE CENTER



EAST CLINIC

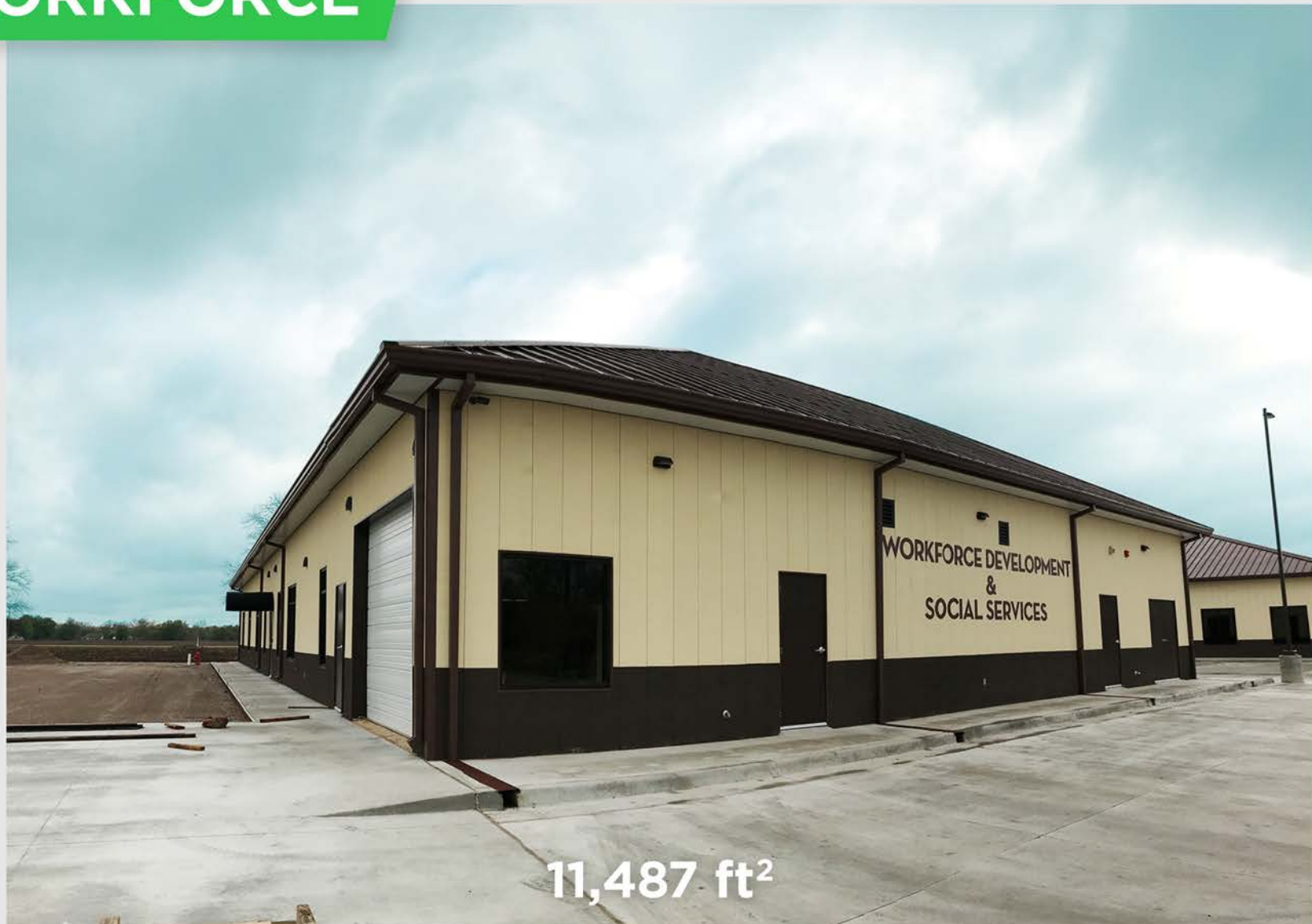


WEST CLINIC



10,147 ft²

WORKFORCE



TRANSPORTATION



IMAGING CENTER



HOUSING UNITS



SOLAR PANELS



ON 36 CPN ELDER HOUSING UNITS

GEO THERMAL

THE CPN GEOTHERMAL SYSTEM IS A WATER-BASED CONSISTING OF A SYSTEM GEOTHERMAL PONDS, WATER SUPPLIES AND EVAPORATIVE CONDENSERS.

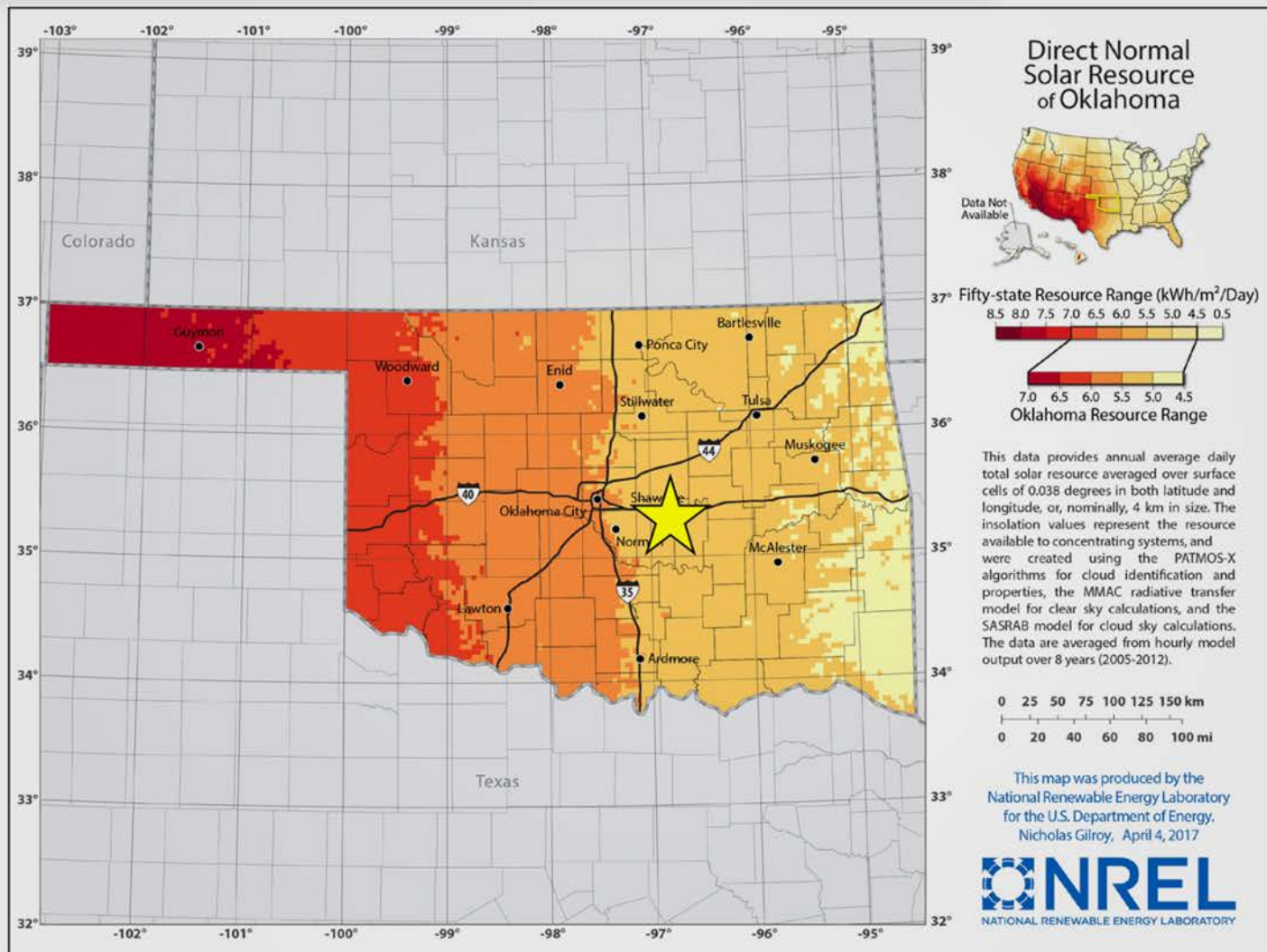


SUMMARY OF OPTIONS ASSESSMENT

Resource Screening

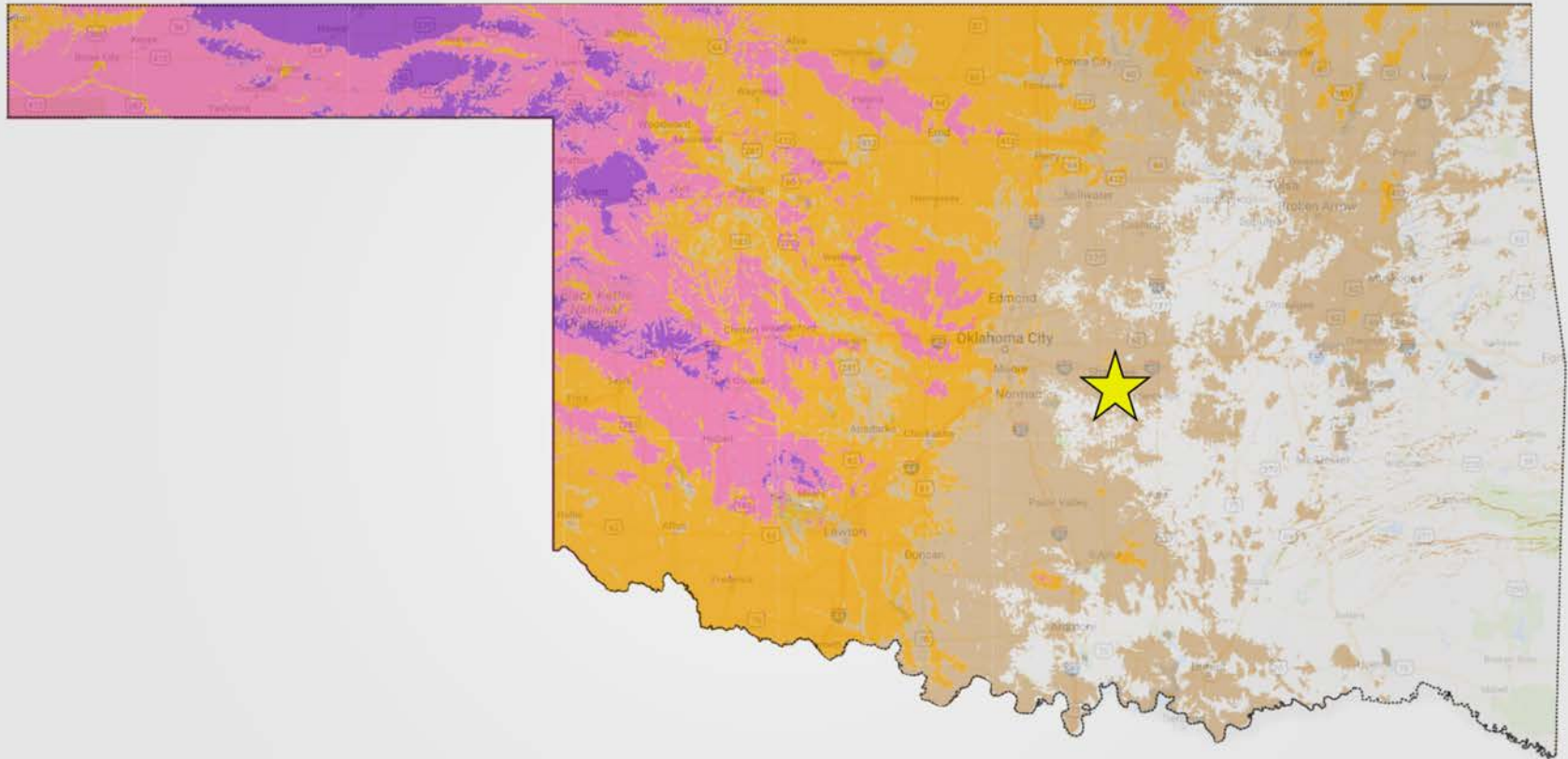
Project Concept	Resource Availability	Land Requirements	Economic Value	Environmental Benefit	Aligns w/ Future Microgrid Plans
Solar					
Wind					
Natural Gas					
Biomass	<i>Not Considered – Citizen Potawatomi Has Limited Access to Biomass Residues</i>				
Geothermal	<i>Not Considered – Citizen Potawatomi Nation Has Already Built Geothermal Assets</i>				
Hydro	<i>Not Considered – Citizen Potawatomi Nation Has Limited Hydro Availability</i>				

OKLAHOMA SOLAR RESOURCE



PROPOSED PROJECT LOCATION

OKLAHOMA WIND RESOURCE

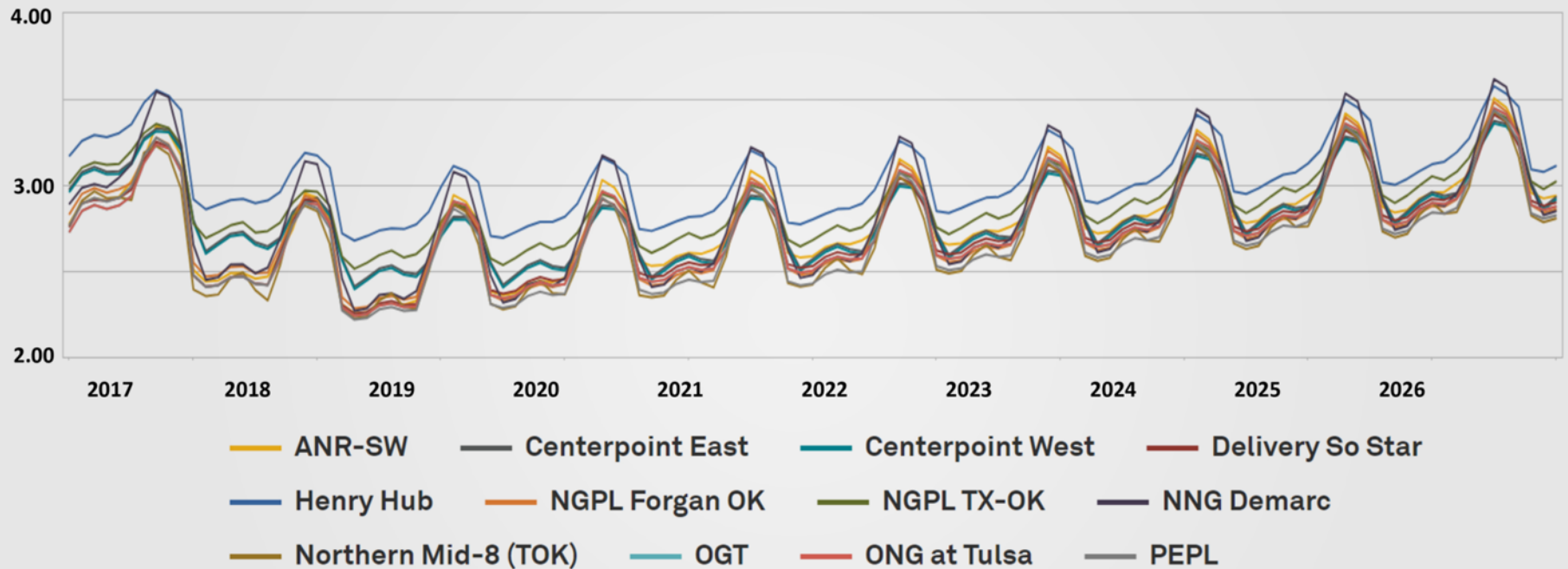


PROPOSED PROJECT LOCATION

Source: NREL Wind Prospector

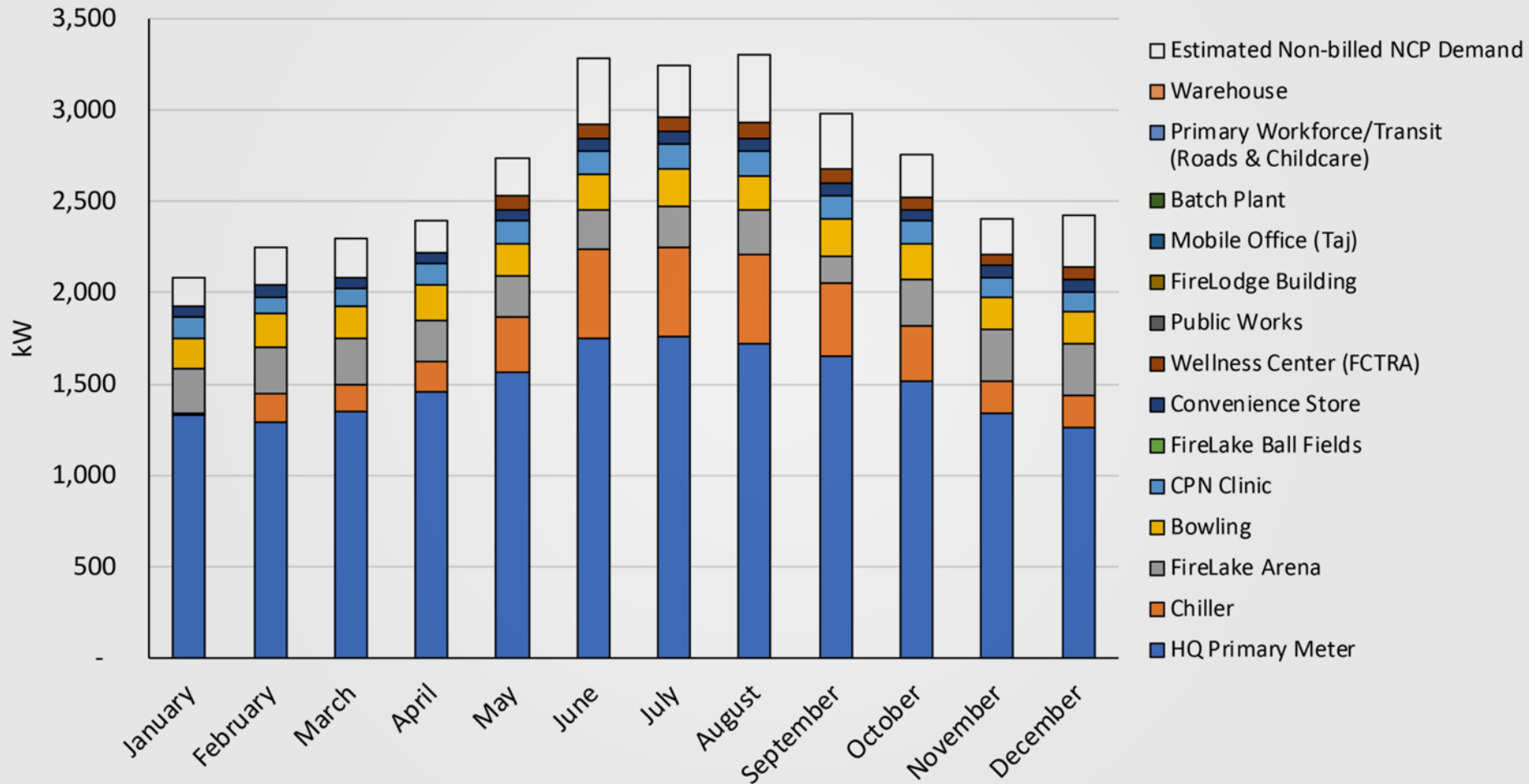
NATURAL GAS FUTURES

\$/MMBtu

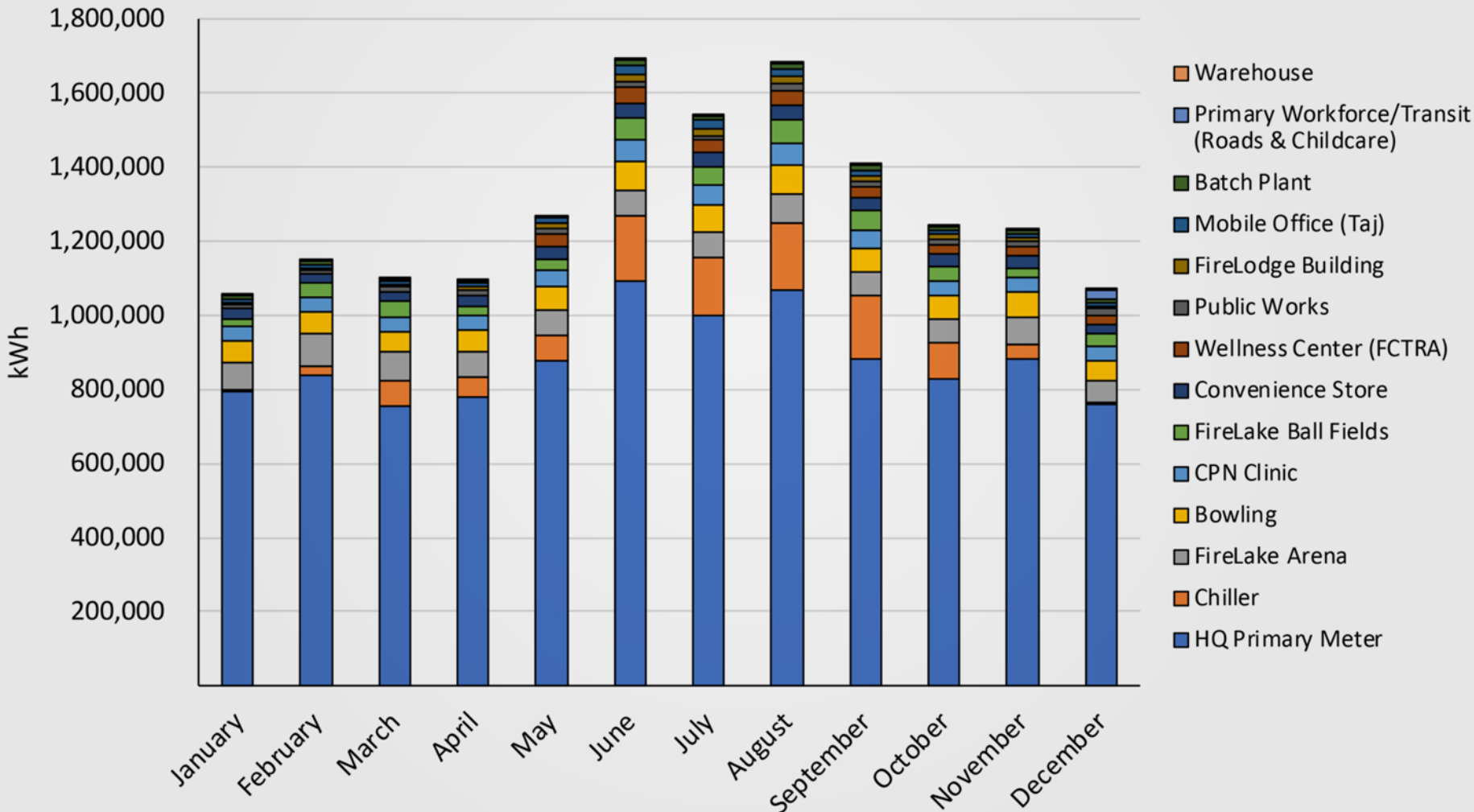


Source: OTC Global Holding Natural Gas Forwards & Futures

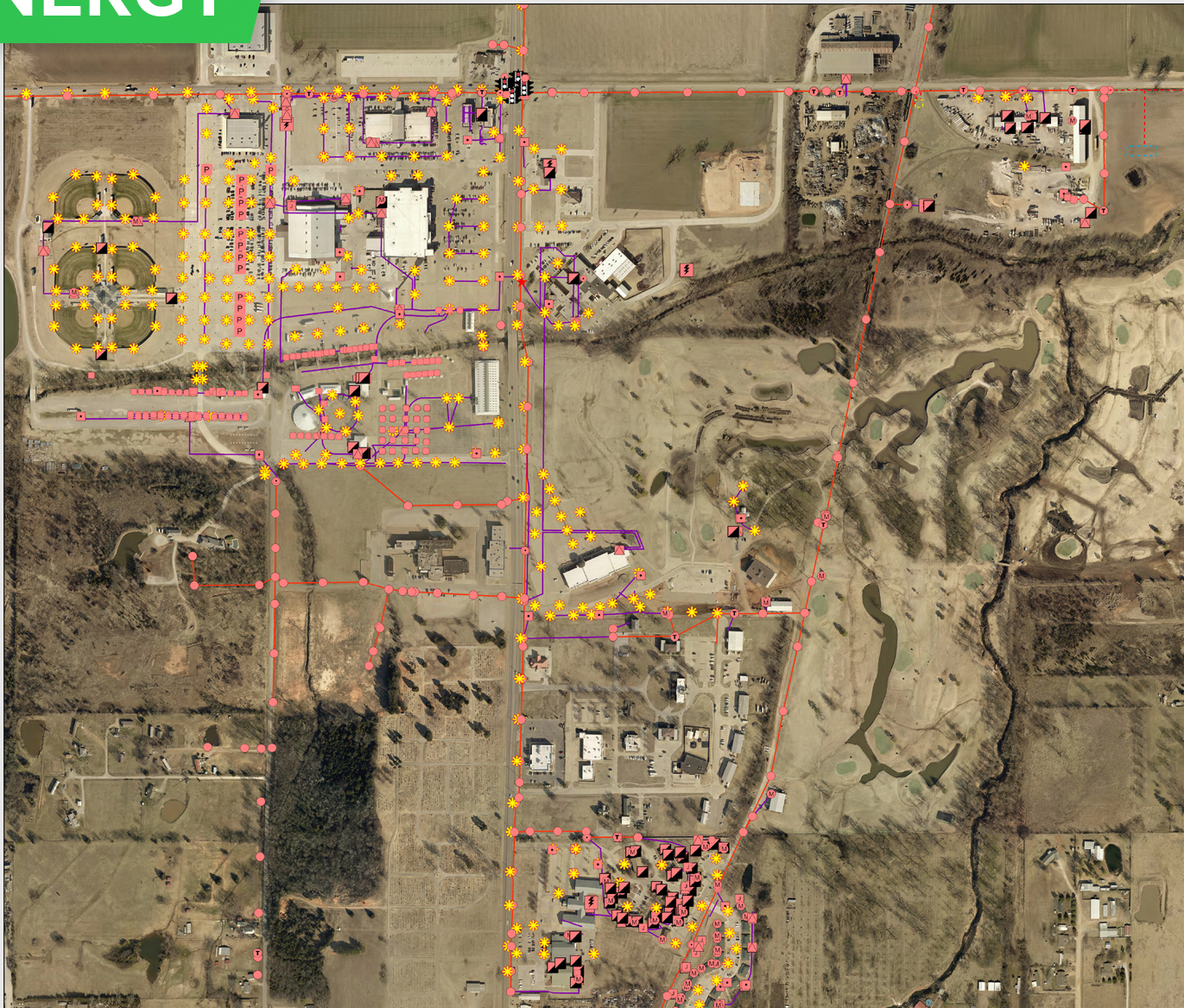
2016 ESTIMATED MONTHLY PEAK DEMAND (kw)



2016 MONTHLY ENERGY USAGE (kWh)



ENERGY



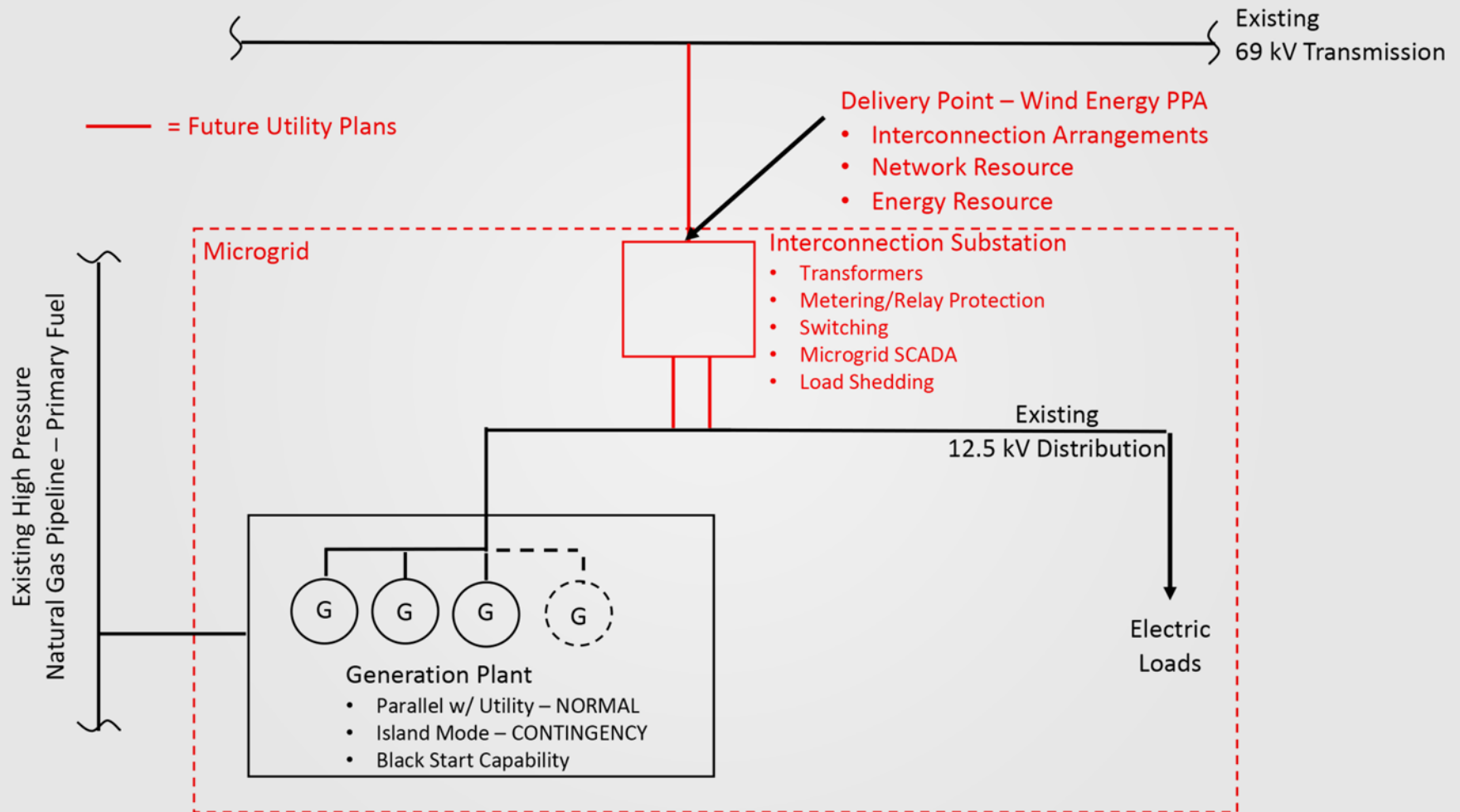
Community-Scale Energy Generating Systems Deployment Area

- Future_Lines
- Electric (Overhead)
- Electric (Underground)
- Power_Plant
- Substation

- | | |
|----------------------|----------------|
| △ <all other values> | □ Substation |
| ⊕ Generator | ⊕ Light |
| ⊕ Cut | ⊕ Panel |
| ⊕ Vacuum | ⊕ Pole |
| ⊕ Connect | ⊕ Vault |
| ⊕ Transformer Pole | ⊕ Meter |
| ⊕ Signal | ⊕ Riser |
| ⊕ Signal Pole | ⊕ Junction Box |
| ⊕ HVAC | ⊕ Control |
| ⊕ Transformer | ⊕ Pullbox |
| ⊕ Pedestal | |

0 250 500 1,000 Feet

UTILITY CONCEPT





FIRELAKE ENERGY

CITIZEN POTAWATOMI NATION
POTAWATOMI.ORG

DAVID THOMASSON
DAVID.THOMASSON@POTAWATOMI.ORG | 405-275-3121 x1135