

# Briefing to STEAB

**Anna Garcia**

*Director, Weatherization and Intergovernmental Programs Office (WIP)*

July 13, 2018



## ✓ WIP Mission

## ✓ WIP Programs

- Weatherization Assistance Program
- State Energy Program

## ✓ Results of our Work

## ✓ Suggested Topics/Ideas for STEAB Focus



# Our Mission & Structure

*WIP's mission is to enable strategic investments in energy efficiency and renewable energy technologies and innovative practices across the U.S. by a wide range of government, community and business stakeholders, in partnership with state and local organizations.*

## WIP Structure

### State Energy Program

Amy Royden-Bloom



### Weatherization Assistance Program

Erica Burrin



### Partnerships and Technical Assistance

Jenah Zweig



### Strategic & Interagency Initiatives

Michael DiRamio



# WIP Programs

---

## Weatherization Assistance Program (WAP)

- Established under Title IV of the Energy Conservation and Production Act of 1976
- Helps eligible low income households reduce the comparatively large percentage of available income that they spend on energy.
- Funds distributed through formula allocation.
- Delivered through community action networks with State and Federal oversight.
- DOE provides technical assistance and helps continually improve practices.

## State Energy Program



- Established under the Energy Policy and Conservation Act of 1975
- Provides support for core programs in state energy offices to advance their energy priorities and support innovative policies and programs.
- Funds distributed through formula and competitive mechanisms.
- DOE provides technical assistance and helps develop, demonstrate, and disseminate best practices.

# WIP Funding History

		FY 2017 Enacted (\$1,000's)	FY 2018 Enacted (\$1,000's)	FY 2019 House Mark (\$1,000's)	FY 2019 Senate Mark (\$1,000's)
<b>Weatherization Assistance</b>		225,000	248,000	248,000	248,000
<b>Training and Technical Assistance</b>		3,000	3,000	3,000	3,000
<b>Weatherization Assistance Program</b>		228,000	251,000	251,000	251,000
<b>State Energy Program</b>		50,000	55,000	55,000	55,000
<b>Weatherization and Intergovernmental Programs</b>		278,000	306,000	306,000	306,000



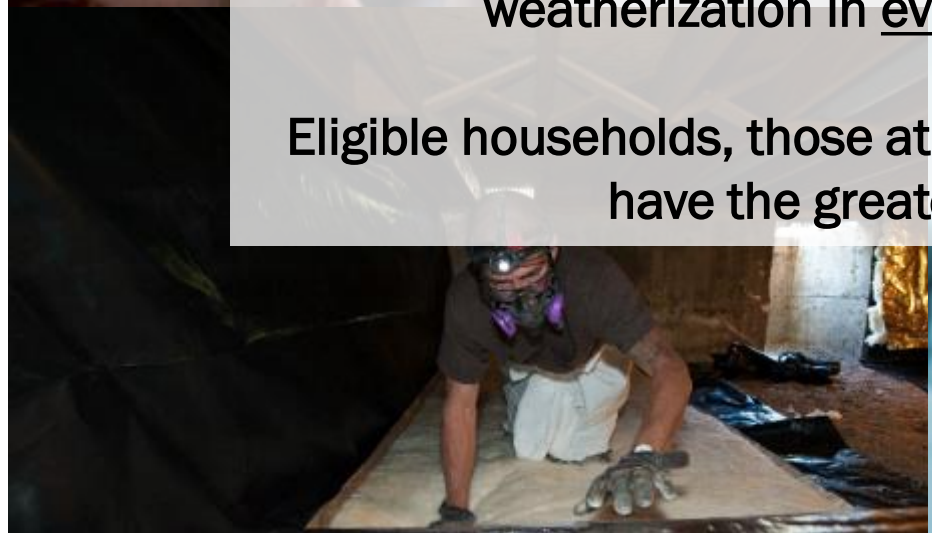
# Weatherization Assistance Program (WAP): What We Do



Over 40 years, WAP has served more than 7 million low-income families!

WAP is the nation's largest, single residential energy efficiency program partnering with state and local agencies to deliver weatherization in every county in the nation

Eligible households, those at or below 200% of poverty, often have the greatest energy burden



# The Weatherization Network: Distribution of Funds



With a budget of roughly \$200 million per year, WAP provides core program funding to grantees through annual, formula grants.



## Grantees (56):

- 50 State Offices
- District of Columbia
- 5 U.S. Territories
- 1 Native American Tribal Organization



## Subgrantees (~700 Local Agencies):

- Community Action Programs
- Local Governments
- Agency-Based Crews or Private Sub-Contractors



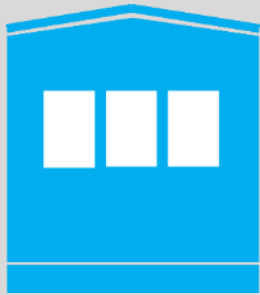
Low-Income American Families (~33,000 per year)  
~39 million eligible households each year



# Weatherization Measures & Building Types



Single Family



Mobile Home



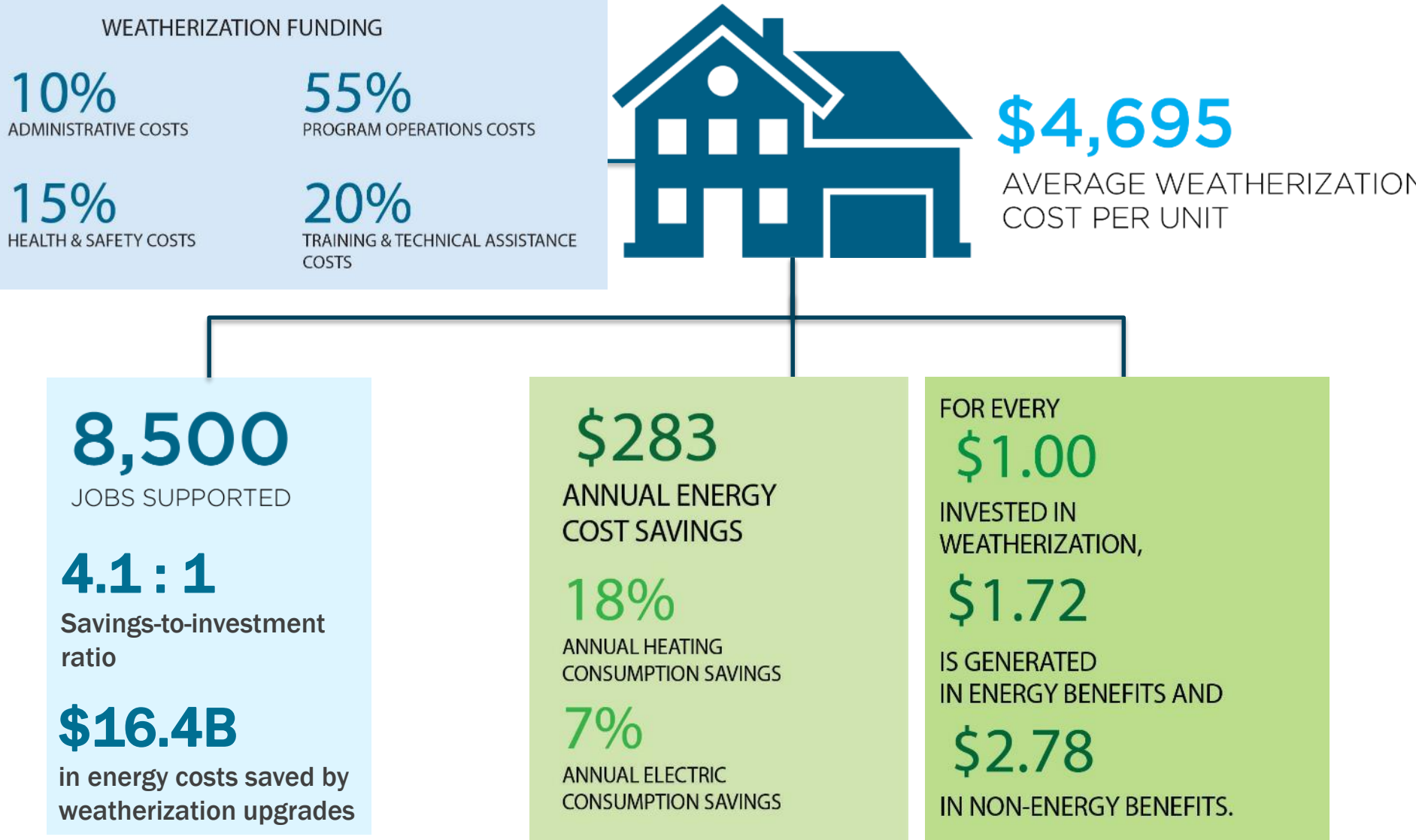
Small Multifamily



Large Multifamily



# Results: Energy & Energy Cost Savings



Retrospective Evaluation of WAP, September 2014, NREL

# Results: Job Training & Setting the Standard for Quality



Developed certifications for 20+ national weatherization training centers

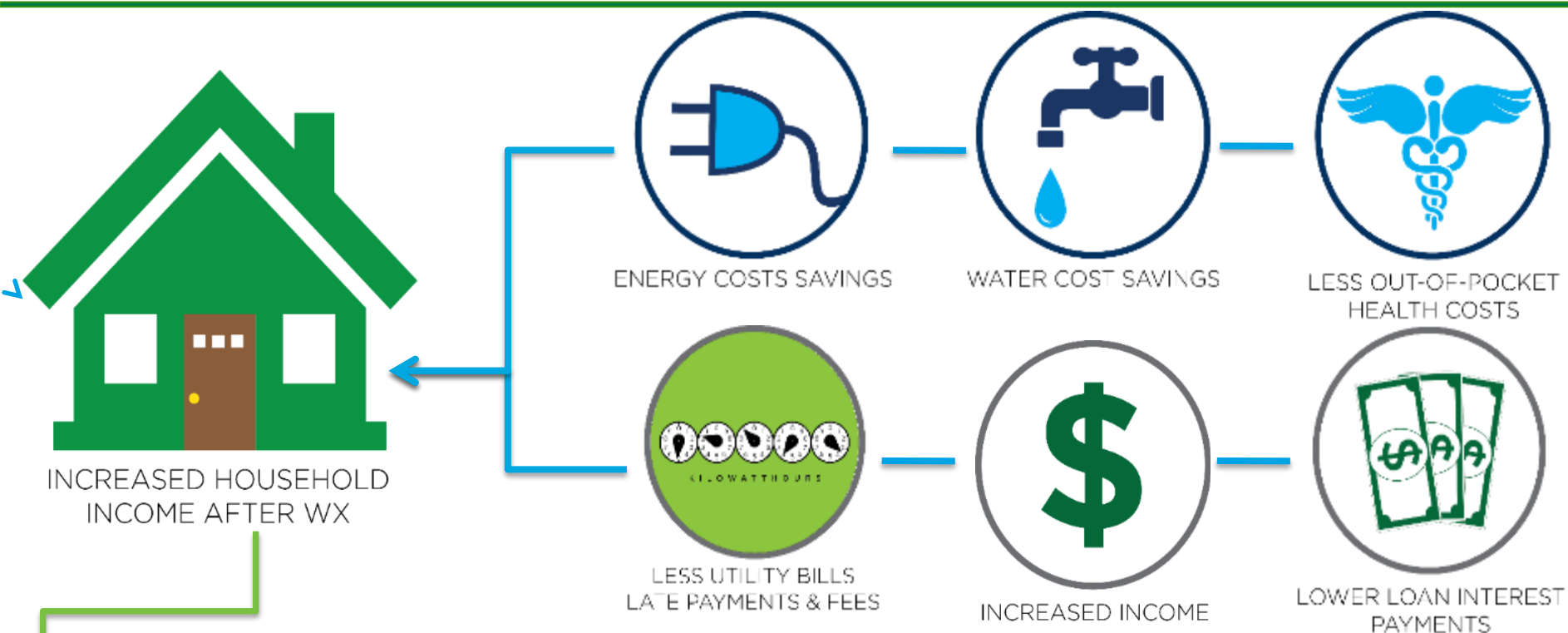
Established Home Energy Professional Certifications and Standard Work Specifications



Supports 8,500 jobs every year



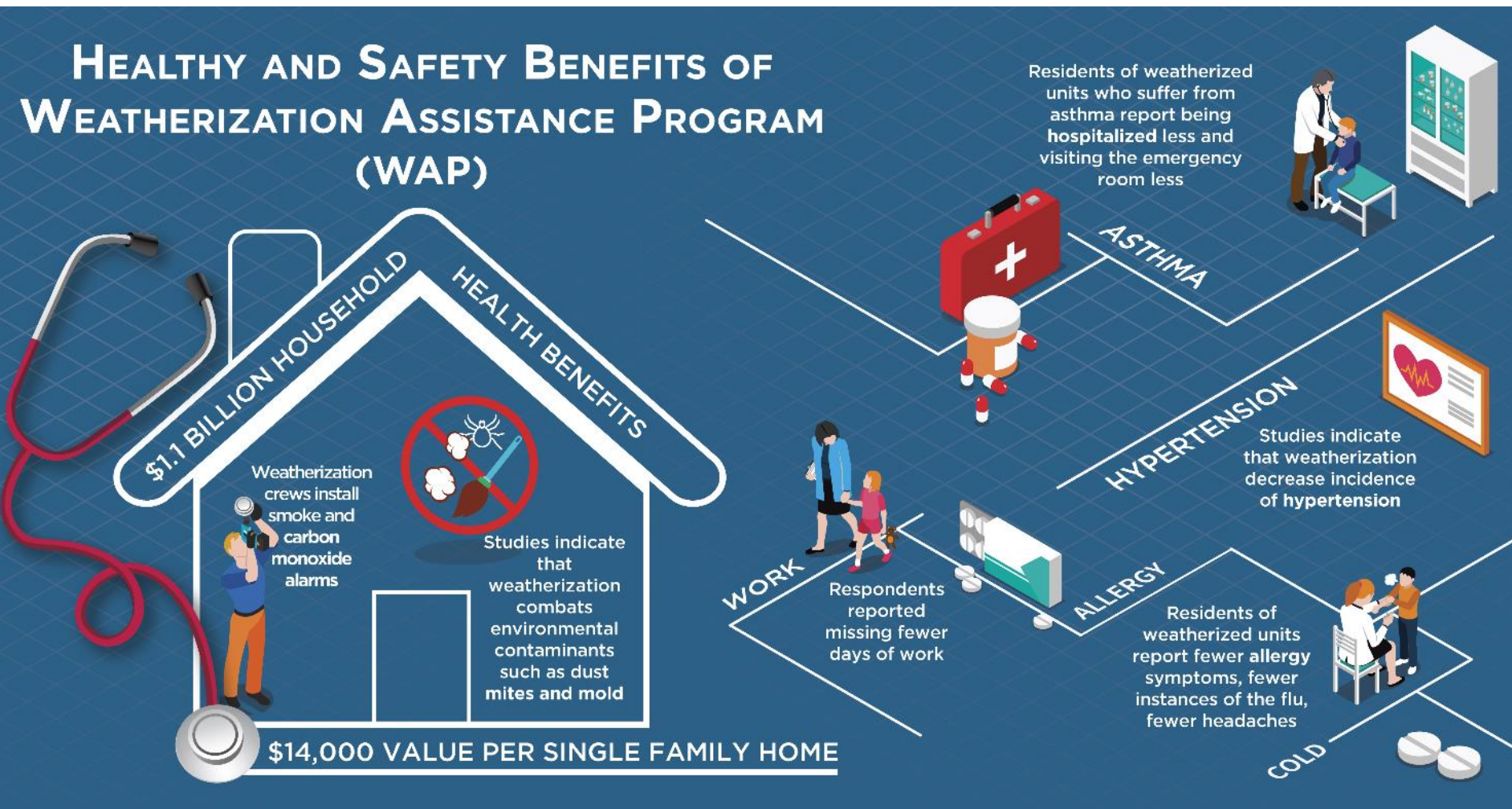
# Results: Overall Impacts on Households



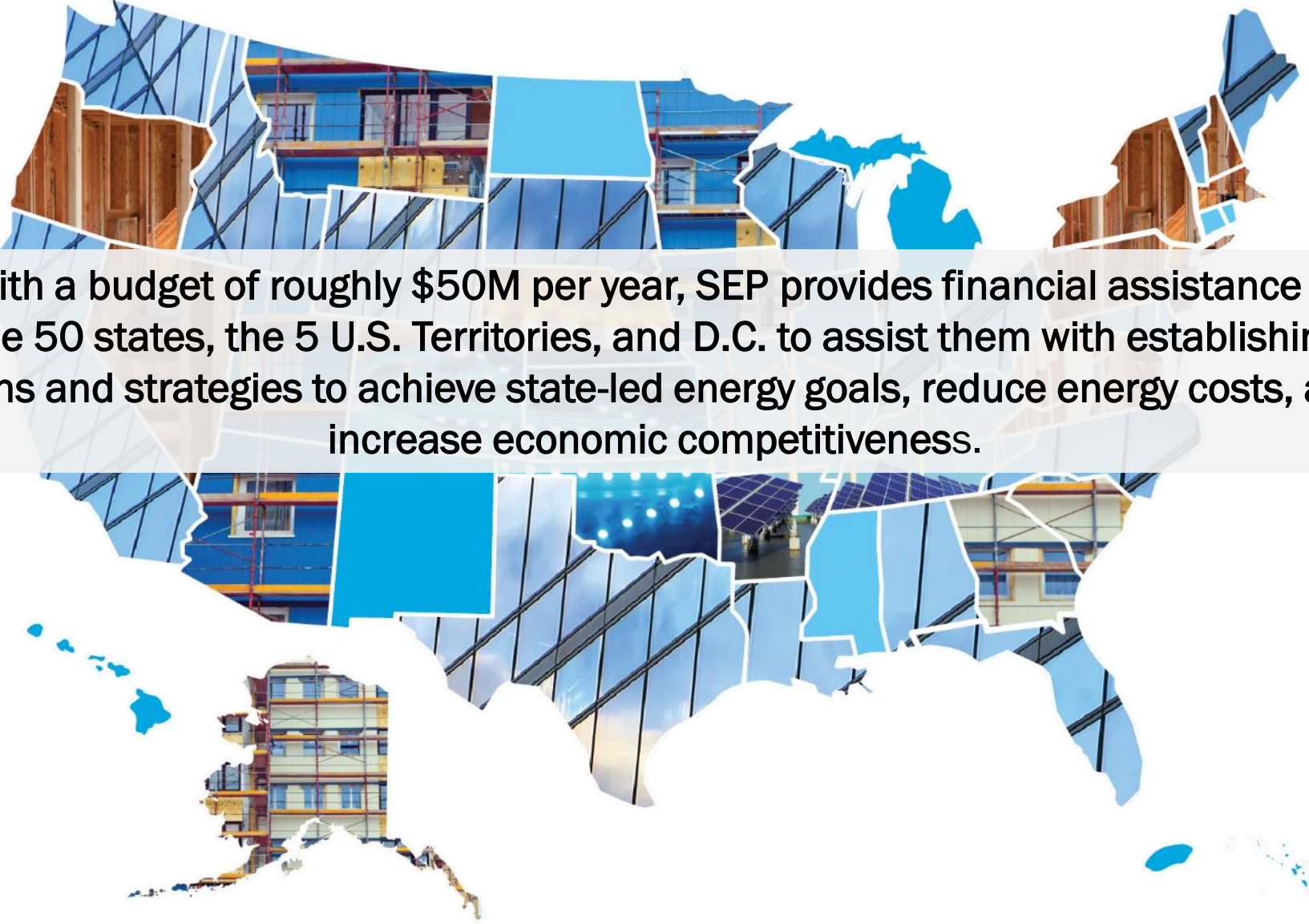
- Homes are more livable
- Households estimated saving an average of **\$514** in out of pocket medical expenses in the year following Weatherization
- Participants saved **\$583** in additional pay per year due to fewer missed days of work (i.e. sick days, doctors visits)
- The total health and household-related benefits for each unit is **\$14,148**



# Results: Health and Safety



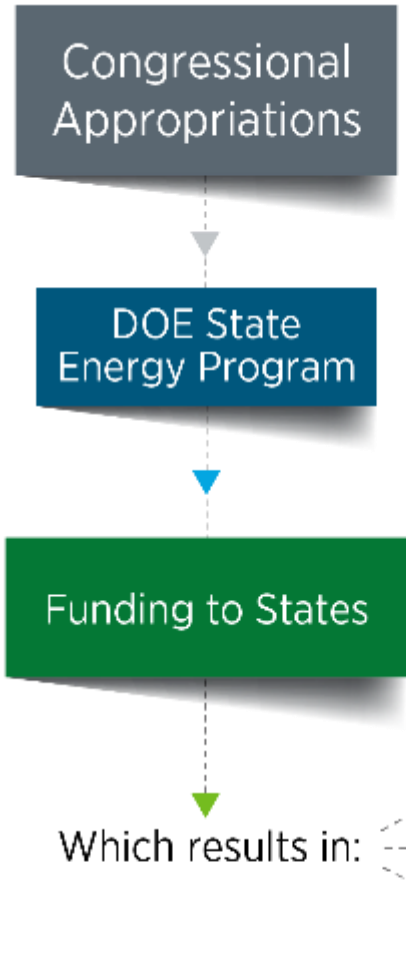
# State Energy Program (SEP): What We Do



With a budget of roughly \$50M per year, SEP provides financial assistance to the 50 states, the 5 U.S. Territories, and D.C. to assist them with establishing plans and strategies to achieve state-led energy goals, reduce energy costs, and increase economic competitiveness.



# State Energy Office (SEO) Funding and Activities



SEP has provided ~\$300 million to SEOs since 2010 through Formula Grants and Competitive Awards



ENERGY RESILIENCY LOW-COST FINANCING PROGRAMS  
DISTRIBUTED GENERATION COMBINED HEAT AND POWER  
COMMERCIAL AUDITS & RETROFITS IMPROVED HOME ENERGY EFFICIENCY  
STATE ENERGY PLANNING  
IMPROVED APPLIANCES ENERGY  
BETTER MOTORS EMERGENCY  
SMALL HYDRO ENERGY PLANNING  
ENERGY RELIABILITY  
INDUSTRIAL REVITALIZATION INNOVATIVE ENERGY  
LOCAL GOVERNMENT PARTNERSHIPS LED LIGHTING STATE TECHNOLOGY DEMONSTRATIONS  
RETROFITS FACILITY ENERGY EDUCATION  
SOLAR AND WIND POWER RETROFITS TELECOMMUTING

# State Energy Program: Why It Matters

4,000 jobs created or retained– one job for every \$12,500 invested

A \$50 million SEP investment realizes \$225 million in energy cost savings

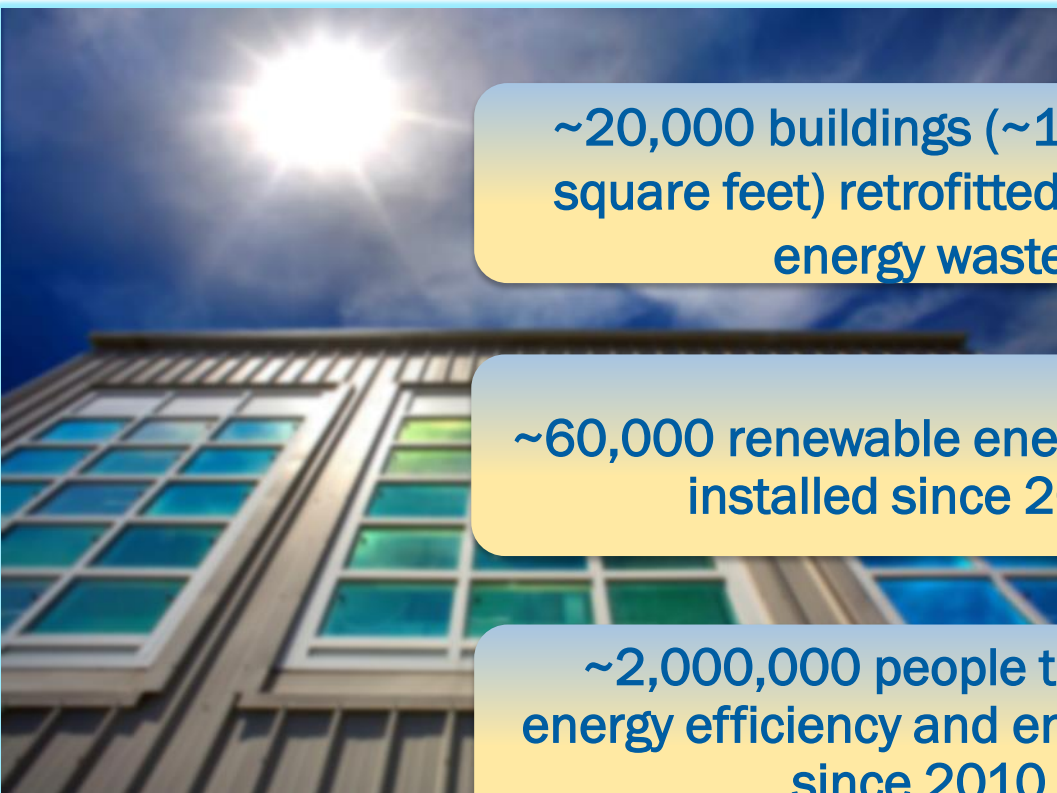


A national evaluation of the program completed in 2015 shows that **SEP achieves \$4.50 in bill savings** over the lifetime of installed measures **for every dollar spent**, resulting in **lifetime energy savings** and **renewable generation** of **9.7 million MMBtus**.

Piloting of innovative projects with K-12 schools and universities

Successful Energy Savings Performance Contracts for retrofits in public facilities

# State Energy Program: Why It Matters

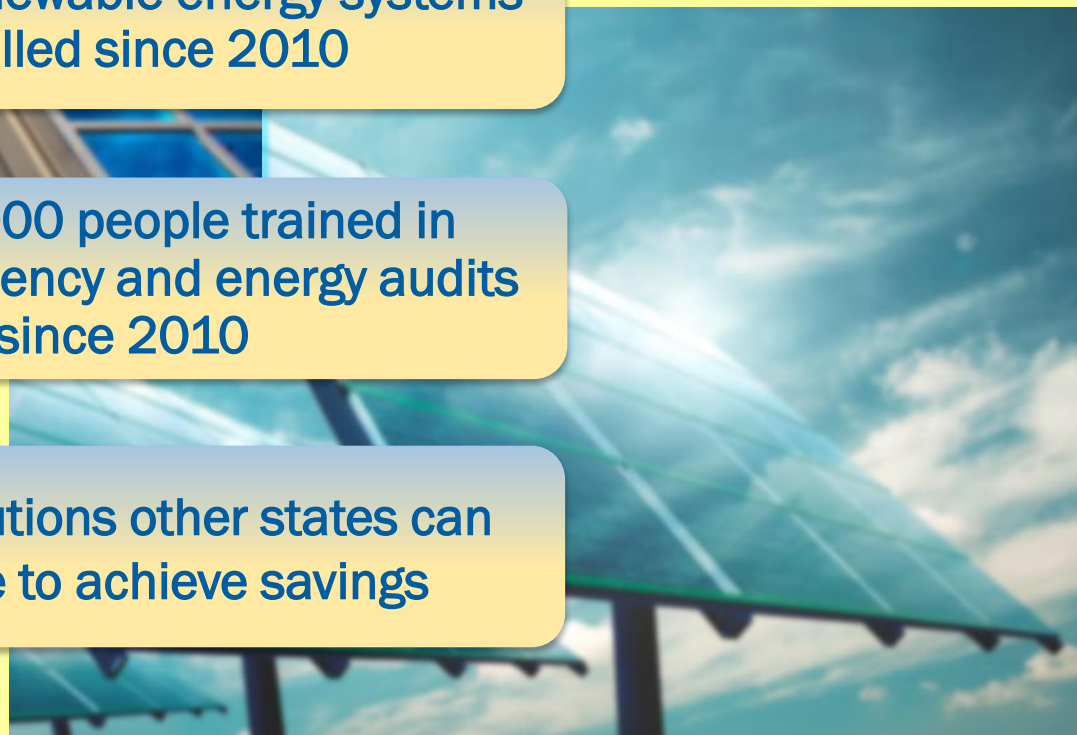


~20,000 buildings (~125 million square feet) retrofitted to reduce energy waste



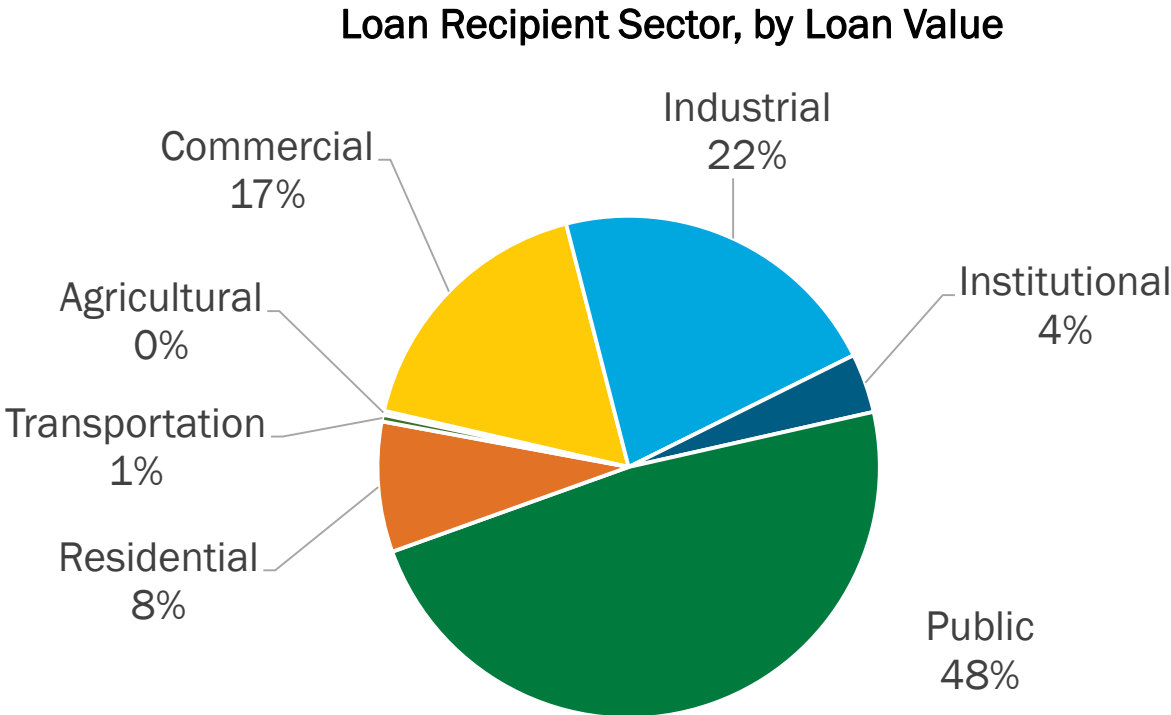
~60,000 renewable energy systems installed since 2010

~2,000,000 people trained in energy efficiency and energy audits since 2010



Proven solutions other states can replicate to achieve savings

# Status of SEP National Revolving Loan Funds (RLF)



- \$690 million in ARRA funding has been budgeted to 37 state-run financing programs
- \$602 million of available funds for RLF Programs
- 115% of available RLF funds have been loaned out to date

# Partnerships & Technical Assistance (P&TA) Team

WIP's P&TA Team serves at the nexus of state and local governments to assist in replicating lead-by-example models.



**Develop an  
Energy Plan**



**Design and  
Implement  
Energy  
Programs**



**Pay for  
Energy  
Initiatives**



**Access and  
Use Energy  
Data**





# Strategic & Interagency Initiatives Team

**Aligning federal resources to help states and local communities have access to more energy efficiency and renewable energy choices, particularly in underserved communities**

- **Low and Moderate Income Communities – gaining access to more energy choices**
- **Rural Alaska Communities Energy Efficiency – develop solutions that can be replicated in other Arctic regions**



# WIP FY 2018 Program Priorities

## Weatherization Assistance Program

- Complete approximately 35,700 low-income residential energy retrofits.
- Integrate new multi-family tools for workers and energy auditors to improve service to this housing stock (over 35% of low income households are multifamily).
- Continue improvements in workforce training, quality standards, and worker certification to improve the quality of the work performed.
- Per the explanatory statements to the Consolidated Appropriations Act, 2018, the program will develop and implement strategies to treat harmful substances, including vermiculite.

## State Energy Program

- Formula Grants: Maintain a portfolio of diverse energy efficiency and renewable energy programs and investments through an active network of state energy offices.
- Competitive Awards and Technical Assistance facilitate the efforts of States in:
  - reducing energy use in government facilities,
  - accelerating investment in public sector use of energy service performance contracts to improve critical infrastructure, and
  - supporting high-impact projects focused on expanding investments in more resilient and affordable energy, including energy efficiency and renewable energy.

# Suggested Topics/Ideas for STEAB Focus

- **WAP**
  - Examining and making recommendations/options for streamlining/simplifying aspects of/the implementation of WAP that states who struggle under the breadth of a complex program could use
- **SEP**
  - Facilitating work between DOE and the states on the R&D and D&D continuum
  - Addressing gaps in emergency preparedness of mission critical public infrastructure (e.g., shelters, 1<sup>st</sup> responder facilities, hospitals, ports, transit) for resiliency and emergency response
  - Aligning federal and state efforts to expand the use of energy savings performance contracting

# QUESTIONS?



[AnnaMaria.Garcia@ee.doe.gov](mailto:AnnaMaria.Garcia@ee.doe.gov)