

# **BPA Tribal Low Income Energy Efficiency Grant Program**

**Carrie Nelson  
Bonneville Power Administration  
March 28<sup>th</sup>, 2018**

# Bonneville Power Administration

- Nonprofit federal power marketing administration based in Pacific Northwest
- Part of U.S. Department of Energy
- Non appropriated – self funded



# Power Marketing

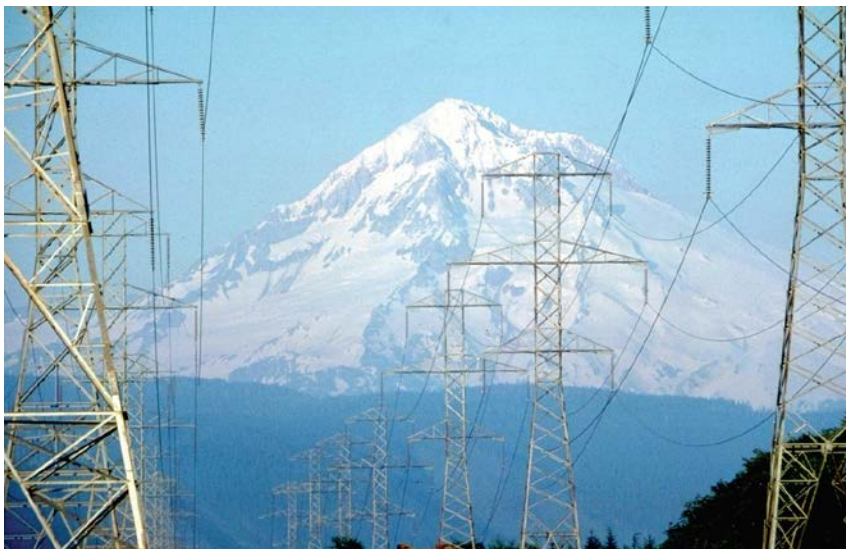
- Markets wholesale electrical power from 31 federal dams, 1 nonfederal nuclear plant and several small nonfederal power plants
- BPA provides 1/3 electric power in Northwest
- 142 Utility Customers





# Transmission

- BPA operates  $\frac{3}{4}$  of the high-voltage transmission system
- 15,238 circuit miles



# FEDERAL COLUMBIA RIVER POWER SYSTEM BPA SERVICE AREA



# BPA Energy Efficiency Overview



# Key Legislative History

- **1980 Pacific Northwest Electric Power Planning and Conservation Act**

**Assure the Pacific Northwest of adequate, efficient, economical and reliable power supply**

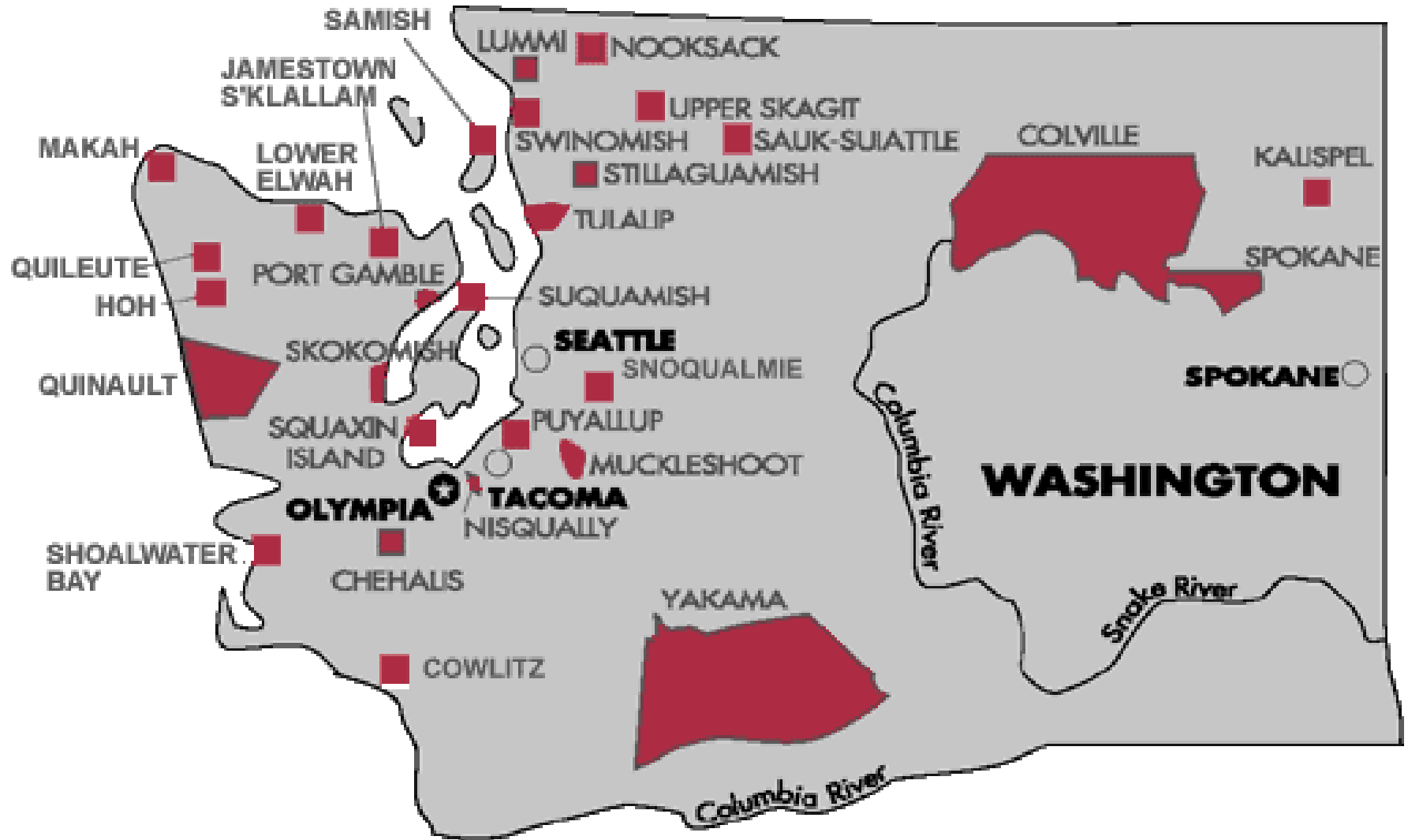
- BPA to encourage conservation and renewables where cost effective
- BPA to provide benefits to residential and small farm customers of investor-owned utilities (residential exchange).
- BPA to protect, mitigate and enhance fish and wildlife affected by federal hydropower construction and operation.
- NW Power and Conservation Council to guide power and fish planning for the region.

# Tribal Set Aside

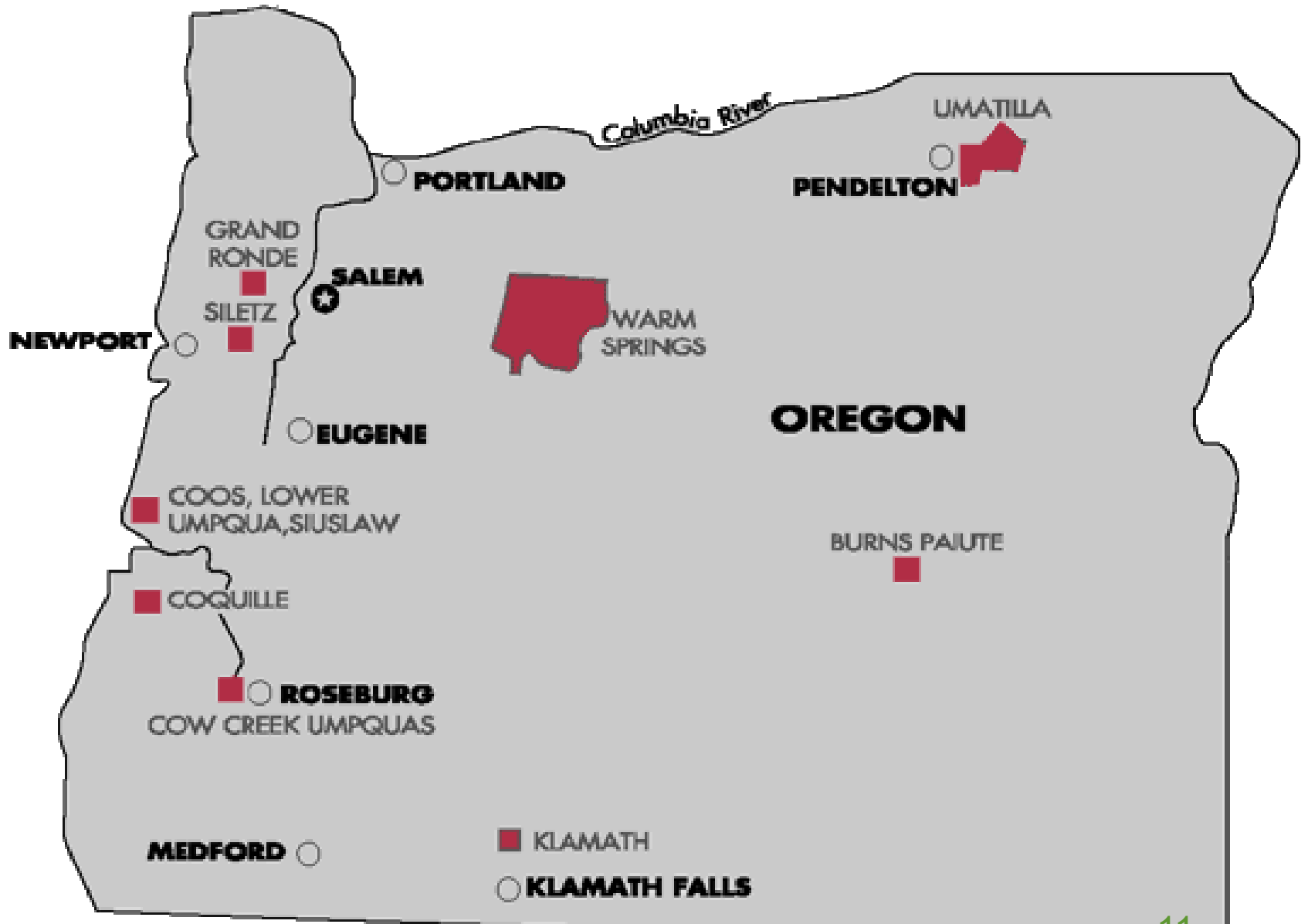
## Low-income Weatherization

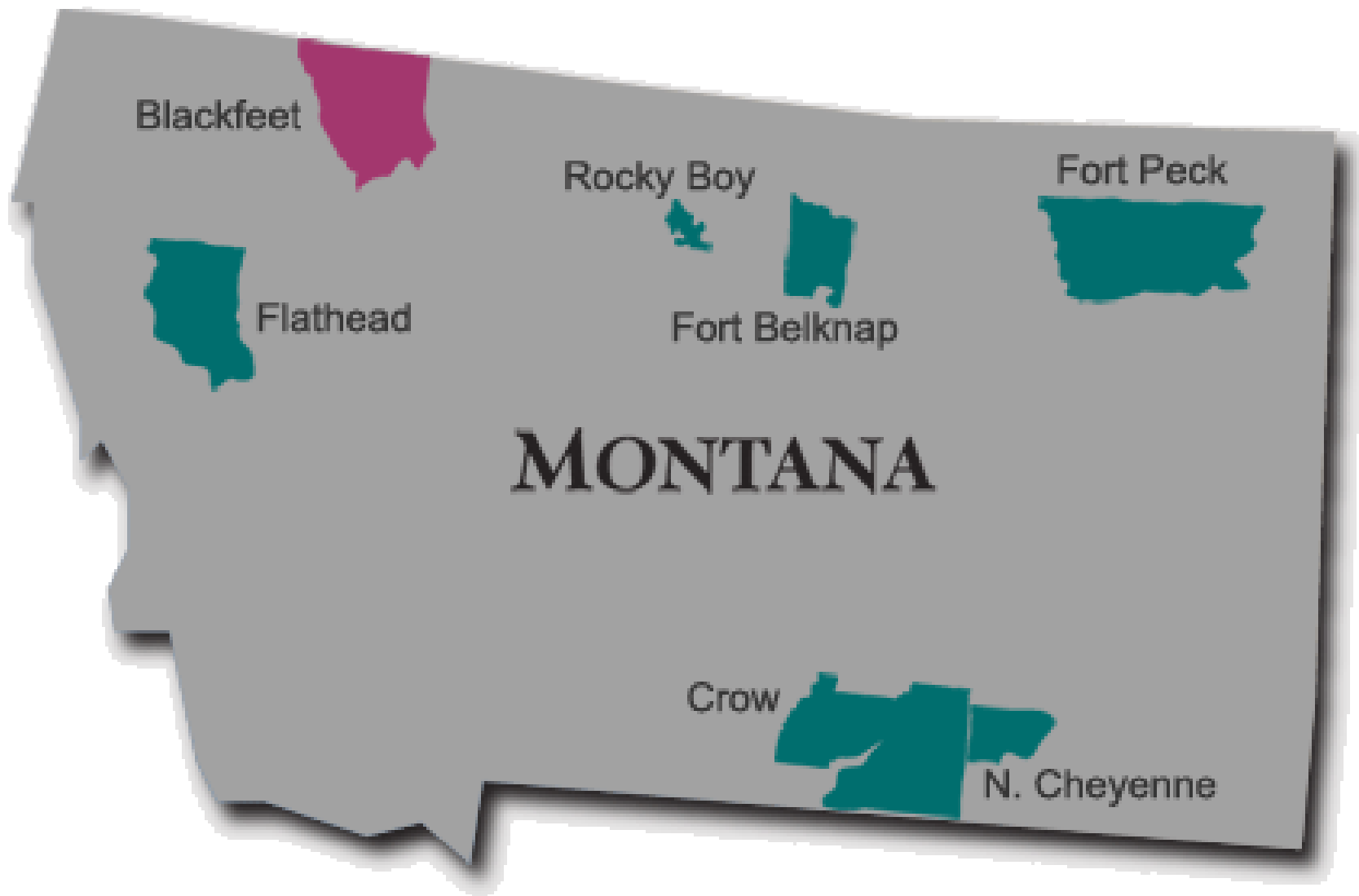
In 1999, BPA specifically set-aside funds from its **Low-income Weatherization Program** to be targeted towards increasing the installation of energy efficiency measures in Native American homes.











## Low Income Energy Efficiency Program

- Funded by public purpose funding set aside by BPA
- ~\$5.5 million dollars annually total
- ~\$550,000 directly distributed from BPA, government to government, for the “Tribal Set Aside” program
- Remaining 4.5 million is distributed to states in the form of grants
  - State allotment based on census
  - 3% is required to be spent on tribal members (based on census)



## Benefits of the Tribal Set Aside Program

- Government to government partnership
- Allows for a more effective way in reaching Native American households.
- The program allows for flexibility in the implementation based on the tribe's specific needs.
- Many tribal residents are more comfortable participating in the program if working with fellow tribal members
- Provides long term employment opportunities for tribes

# Grants Compliment DOE program

- Very similar to DOE with the exception of some minor changes
  - 30% for health and safety (DOE is 15%)
  - 30% for LIWx repairs (DOE 15%)
  - Allows for more appliances
  - No age requirement for dwelling, can return to unit as many times as necessary

# Options for utilizing grants

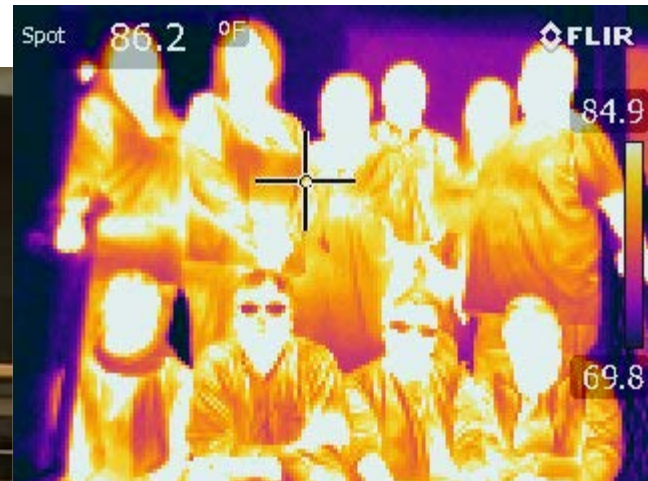
- Training
  - Travel, lodging, registration, per diem
- Equipment
- Weatherization Programs
  - Labor costs, Transportation costs, Materials
- Energy Efficiency Technologies/Appliances
  - Ductless Heat Pumps
  - Heat Pump Water Heaters
  - Lighting
  - Appliances

# Options For Tribal Program Structure

- Tribe independently implements program utilizing BPA funding
  - outreach, qualification screening, coordination and marketing activities to full weatherization, appliance, HVAC and LED installation programs
  - Tribe can conduct installations and weatherization audits when they have the trained staff
- Tribe can collaborate with the State and the local Community Action Agency (CAAs) for installations and audits
- Tribes can collaborate with other tribes for installation and audits

# Building a Tribal Program with BPA Funding

- **BPA Funded Workshops**



BPA Training Workshop, BPC, Bellingham WA



# Building a Tribal Program with BPA Funding



Technical Training  
Hosted By Yakama





# Building a Tribal Program with BPA Funding

- **Equipment, Training and Certifications**



Siletz Tribal Auditor



# Encourage Collaboration with Utilities

- BPA offers dollar for dollar reimbursement to customer utilities for cost effective energy efficiency measures
- BPA communicates with CAAs and utilities to help inform and encourage collaboration
- Conservation targets provide good incentive for working with tribes



Quileute Housing Authority

# What Works

- Visiting the tribes and building relationships
- Directly funding the tribe
- Aligning our grants with DOE, supplementing with more flexibility
- Helping tribes connect with each other and with the CAAs
- Holding a Semi-Annual workshop
- Making reporting simple



# Thank You!

Questions?

Carrie Nelson  
cenelson@bpa.gov  
503.230.4785