



Cheniere Energy, Inc.
700 Milam Street, Suite 1900
Houston, Texas 77002
phone: 713.375.5000
fax: 713.375.6000

RECEIVED

By DOE at 4:16 pm, Oct 02, 2017

September 29, 2017

U.S. Department of Energy
Office of Fossil Energy Natural Gas Regulatory Activities
Attention: Larine Moore, Docket Room Manager Docket Room FE-34
P.O. Box 44375
Washington, DC 20026-4375

Re: Cheniere Marketing International, LLC and Corpus Christi Liquefaction, LLC
DOE Semi-Annual Report for Period of March 1, 2017, through August 31, 2017
FE Docket No. / Order No.
12-99-LNG / 3164
12-97-LNG / 3638
15-97-LNG / 3699

Dear Ms. Moore:

Pursuant to the above-referenced Orders, Cheniere Marketing International, LLC and Corpus Christi Liquefaction, LLC herein submits its semi-annual report for the period March 1, 2017, through August 31, 2017, describing the progress of the Corpus Christi Liquefaction Project ("Project"). Please refer to **Attachment A** for a summary of construction activities that occurred during the reporting period. Included as **Attachment B** are the Monthly Reports which were submitted to Federal Energy Regulatory Commission under FERC Docket Numbers CP12-507-000 during the reporting period.

Project Engineering has progressed to 100.0%. Procurement has progressed to 89.2%. Subcontract and direct hire construction work are 47.8% and 48.0% complete, respectively. The total Project has progressed to 71.7% complete against the plan of 72.1%.

No new long term contracts were entered into during the reporting period. No construction activities have occurred in the Stage 3 area.

Should you have any questions about this filing, please contact the undersigned at (713) 375-5000.

Sincerely,

/s/ Karri Mahmoud

Karri Mahmoud
Cheniere Marketing International, LLC and Corpus Christi Liquefaction, LLC

Attachment A

Corpus Christi Liquefaction Project Construction Report for Period: March 1, 2017, through August 31, 2017	
Area	Construction Activities
Trains 1& 2/ Compressor Area / Cryogenic Piperack / Propane Refrigeration	<ul style="list-style-type: none"> Continued concrete foundations, pedestals and area paving in various areas. Continued setting mechanical equipment. Continued erection of structural steel. Continued installation of aboveground pipe. Continued cable tray and cable pulling.
OSBL / Refrigerant Storage Area / Process Piperack	<ul style="list-style-type: none"> Continued concrete foundations and pedestals in various areas. Continued erection of structural steel. Continued installation of aboveground pipe and testing. Continued installation of mechanical equipment. Continued cable tray and conduit installation.
LNG Tank A	<ul style="list-style-type: none"> Continued erection of main pump platform. Continued pipe erection in main pump platform. Continued miscellaneous electrical installation. Continued preassembly of pump tubes. Commenced grouting horizontal tendons.
LNG Tank C	<ul style="list-style-type: none"> Continued erection of main pump platform. Continued pipe preassembly. Continued installation of Stage 2 bottom insulation. Continued construction of inner shell ring 5. Continued pushing horizontal strands.
Marine Area	<ul style="list-style-type: none"> Completed turnover of West Jetty to the LNG OSBL Team. Continued installation of marine equipment. Continued construction of diaphragms and protection slabs at East Jetty.

Attachment B

CORPUS CHRISTI LIQUEFACTION PROJECT

Corpus Christi, Texas

**MONTHLY PROGRESS REPORT
MARCH 2017**

FERC DOCKET NO. CP12-507-000

Table of Contents

1.0	Executive Summary.....	3
2.0	Project Highlights	3
3.0	Environmental, Safety, and Health Progress	3
4.0	Schedule	3
5.0	Construction.....	4
6.0	Permitting and Environmental.....	7
7.0	Progress Pictures.....	8

1.0 Executive Summary

This report covers activities of the CCL project that occurred during the month of March 2017.

Engineering has progressed to 100.0%. Procurement has progressed to 78.6%. Bechtel's direct hire construction through March was 30.7%. The total Project has progressed to 59.1% complete.

2.0 Project Highlights

Construction focused on progressing permanent plant concrete and steel, underground and aboveground pipe, electrical and equipment installation. Major highlights for March included setting Train 1 Lube Oil skids and pumps, completion of fin fan setting on AGRU pipe rack, placement of Train 2 CO2 Absorber and Thermal Oxidizer, base slab pouring for OSBL impoundment basin and commencement of cable pulling in Train 1 LNG Refrigeration Compressor area and in OSBL.

3.0 Environmental, Safety, and Health Progress

	Near Miss		First Aid		Recordable		Lost Time	
	Month	ITD ¹	Month	ITD ¹	Month	ITD ¹	Month	ITD ¹
Bechtel	25	240	54	516	3	20	0	0
Subcontractor	2	22	0	12	0	1	0	2
Total	27	262	54	528	3	21	0	2

1. ITD = Inception to Date.

4.0 Schedule

The overall Project has progressed to 59.1%. Activities planned for the month of April 2017 are on track.

5.0 Construction

Area	Construction Activities in March	Planned Work for April
ISBL Train 1 Compressor Area / Cryogenic Piperack / Propane Refrigeration	<ul style="list-style-type: none"> Continued placement of concrete foundations and pedestals. Continued setting mechanical equipment. Continued erection of structural steel. Continued installation of aboveground pipe. Continued cable tray and conduit installation. Continued cable tray pulling. Continued installation of lighting and fixtures. Continued initial alignments. Continued installation of bus duct. 	<ul style="list-style-type: none"> Continue placement of foundations, pedestals and area paving. Continue setting mechanical equipment. Continue erection of structural steel. Continue installation of aboveground pipe. Continue cable tray and conduit installation. Continue cable tray pulling. Continue installation of lighting and fixtures. Continue installation of bus duct.
Train 2	<ul style="list-style-type: none"> Continued concrete placement. Continued setting mechanical equipment. Completed placement of CO2 absorber. Continued erection of structural steel. Continued installation of aboveground pipe. Continued under compressor deck fabrication work. 	<ul style="list-style-type: none"> Continue concrete placement. Continue setting mechanical equipment. Continue erection of structural steel. Continue installation of aboveground pipe. Continue under compressor deck fabrication work.
OSBL / Refrigerant Storage Area / Process Piperack	<ul style="list-style-type: none"> Continued concrete placement. Continued installation of mechanical equipment. Continued installation and testing of underground pipe. Continued erection of structural steel. Continued installation of aboveground pipe. Continued cable tray installation. Commenced wire and cable pulling. 	<ul style="list-style-type: none"> Continue concrete placement. Continue installation and testing of underground pipe. Continue setting mechanical equipment. Continue structural steel work in various areas. Continue installation of aboveground pipe. Continue installation of cable tray in various areas.

Corpus Christi Liquefaction, LLC
March 2017 Monthly Progress Report

Area	Construction Activities in March	Planned Work for April
LNG Tank A	<ul style="list-style-type: none"> Completed thermal corner protection and installation of Post Tensioning (PT) vertical strands. Completed inner shell ring 1 construction and stressing of vertical tendons. Continued waterfall pipe preassembly. Continued inner shell ring 2 construction. Continued erection of Pressure Relief Valve (PRV) structure on roof. Continued erection of waterfall support. Continued preassembly of main platform structural steel. Continued installation of roof handrail. Continued concrete placement for roof nozzles and pedestals. Commenced installation of instrumentation platform. Commence installation of base slab heater cable and grouting of vertical tendons. 	<ul style="list-style-type: none"> Continue preassembly of main platform structural steel. Continue installation of base slab heater cable. Commence erection of roof walkway and main pump platform. Commence installation of waterfall rise pipe. Commence construction of inner shell ring 3. Complete construction of inner shell ring 2. Complete erection of PRV structure on roof. Complete installation of roof handrail and grouting of vertical tendons. Complete erection of waterfall support. Complete installation of waterfall support. Complete installation of instrumentation platform. Complete concrete placement for roof nozzles and pedestals.
LNG Tank C	<ul style="list-style-type: none"> Completed concrete placement for various bearing ring construction. Completed wall lift rebar, PT duct and thermal corner protection. Continued roof rebar. Continued installation and stressing of PT horizontal strands in wall lift. Continued construction of inner shell ring 1. Completed installation and stressing of PT horizontal strands in wall lift. 	<ul style="list-style-type: none"> Complete roof rebar. Complete installation and stressing of PT horizontal strands in wall lift. Complete construction of inner shell ring 1. Complete closing of inner tank in preparation for roof pressurization. Complete roof concrete placement. Complete depressurization of tank. Commence construction of inner shell ring 2.
Access Roads / Buildings	<ul style="list-style-type: none"> Continued road construction. Completed base and sub base installation on various roads. Completed pre-cast headwalls. Completed Reinforced Concrete (RC) pipe installation. 	<ul style="list-style-type: none"> Complete RC pipe installation.

Corpus Christi Liquefaction, LLC
March 2017 Monthly Progress Report

Area	Construction Activities in March	Planned Work for April
Marine Area	<ul style="list-style-type: none">Continued concrete placement at East Jetty superstructure and Jetty piers.Continued concrete placements/installations of girders, diaphragms, precast slab panels, Cast in Place (CIP) concrete deck and handrails at West Jetty.	<ul style="list-style-type: none">Continue concrete placement at East Jetty superstructure and Jetty piers.Continue vapor barrier fence piers.Continue placement/installation of girders, diaphragms, precast slab panels, Cast in Place (CIP) concrete deck and handrails at West Jetty superstructure.

6.0 Permitting and Environmental

Summary of Problems, Non-Compliances, and Corrective Actions

Date	Description
N/A	None.

Agency Contacts/Inspections

Agency	Name	Date	Location/Activity
N/A			

7.0 Progress Pictures



Train 1 – Setting Hot Oil Drum



Train 2 – Setting CO2 Absorber

Corpus Christi Liquefaction, LLC
March 2017 Monthly Progress Report



Train 2 – Setting Heavies Removal Column



Train 2 – Thermal Oxidizer Installation



OSBL – AG Pipe Installation

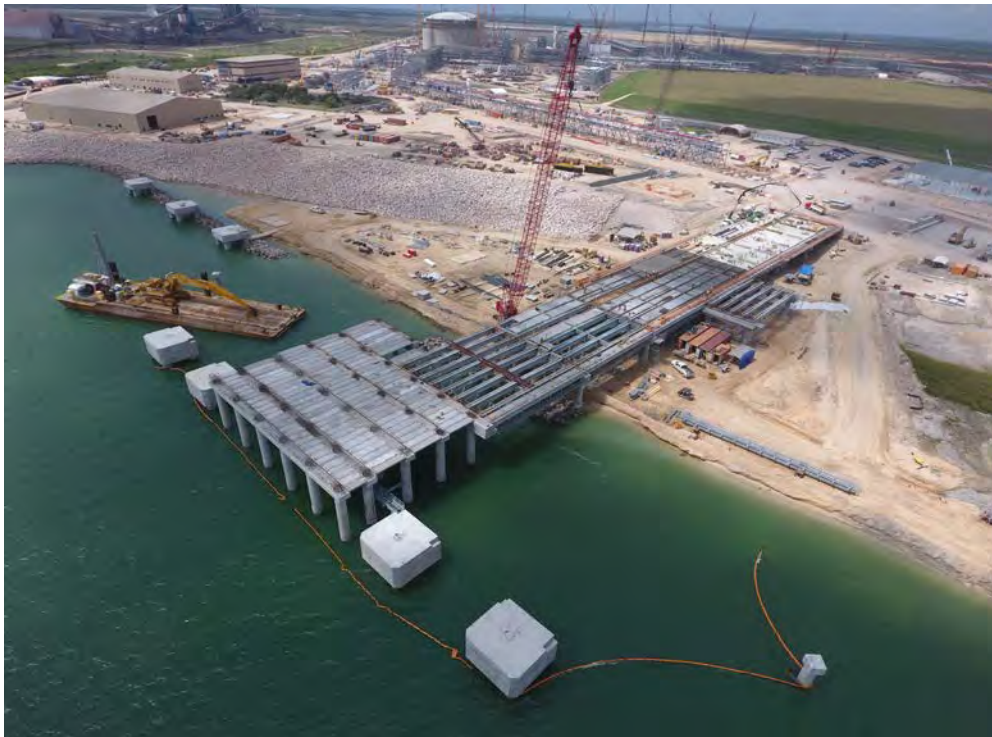


LNG Tank C – Roof Rebar Installation

Corpus Christi Liquefaction, LLC
March 2017 Monthly Progress Report



OSBL – East Jetty Columns Installation



Aerial - Marine West Berth

Corpus Christi Liquefaction, LLC
March 2017 Monthly Progress Report



Aerial - Marine Offloading Facility



Aerial – OSBL LNG Train 1

CORPUS CHRISTI LIQUEFACTION PROJECT

Corpus Christi, Texas

**MONTHLY PROGRESS REPORT
APRIL 2017**

FERC DOCKET NO. CP12-507-000

Table of Contents

1.0 Executive Summary..... 3

2.0 Project Highlights 3

3.0 Environmental, Safety, and Health Progress 3

4.0 Schedule 3

5.0 Construction..... 4

6.0 Permitting and Environmental..... 6

7.0 Progress Pictures..... 7

1.0 Executive Summary

This report covers activities of the CCL project that occurred during the month of April 2017.

Engineering has progressed to 100.0%. Procurement has progressed to 81.4%. Subcontract and direct hire construction work are 31.1% and 33.7% complete, respectively. The total Project has progressed to 61.7% complete against the plan of 62.2%.

2.0 Project Highlights

Construction focused on progressing permanent plant concrete and steel, underground and aboveground pipe, electrical and equipment installation. Major highlights for April included setting Train 1 Cold Boxes, setting Train 2 Refrigeration Compressors, concrete placement for LNG Tank C roof, placement of all IAC modules and installation of high voltage OPGW cable on all poles.

3.0 Environmental, Safety, and Health Progress

	Near Miss		First Aid		Recordable		Lost Time	
	Month	ITD ¹	Month	ITD ¹	Month	ITD ¹	Month	ITD ¹
Bechtel	42	282	59	575	1	21	1	1
Subcontractor	2	24	2	14	0	1	0	2
Total	44	306	61	589	1	22	1	3

1. ITD = Inception to Date.

4.0 Schedule

The overall Project has progressed to 61.7%. Activities planned for the month of May 2017 are on track.

5.0 Construction

Area	Construction Activities in April	Planned Work for May
ISBL Train 1 Compressor Area / Cryogenic Piperack / Propane Refrigeration	<ul style="list-style-type: none"> Completed concrete foundations and pedestals in various areas. Continued setting mechanical equipment. Continued erection of structural steel. Continued installation of aboveground pipe. Continued cable tray installation. Continued conduit installation. Continued cable tray pulling. Continued installation of lighting and fixtures. Continued initial alignments. Continued installation of bus duct. 	<ul style="list-style-type: none"> Continue placement of foundations and pedestals in various areas. Continue setting mechanical equipment. Continue erection of structural steel. Continue installation of aboveground pipe. Continue cable tray installation. Continue cable tray pulling. Continue conduit installation. Continue installation of lighting and fixtures. Continue installation of bus duct.
Train 2	<ul style="list-style-type: none"> Completed concrete foundations and pedestals in various areas. Continued erection of structural steel. Continued setting mechanical equipment. Continued erection of structural steel. Continued installation of aboveground pipe. 	<ul style="list-style-type: none"> Continue erection of structural steel. Continue setting mechanical equipment. Continue installation of aboveground pipe.
OSBL / Refrigerant Storage Area / Process Piperack	<ul style="list-style-type: none"> Continued concrete foundations and pedestals in various areas. Continued erection of structural steel. Continued installation of aboveground pipe. Continued installation of mechanical equipment. Continued cable tray installation. Continued wire and cable pulling. 	<ul style="list-style-type: none"> Continue concrete foundations and pedestals in various areas. Commence setting GIS Building. Continue installation aboveground pipe. Continued cable tray installation. Continue setting mechanical equipment. Continue erection of structural steel. Continued wire and cable pulling.

Corpus Christi Liquefaction, LLC
April 2017 Monthly Progress Report

Area	Construction Activities in April	Planned Work for May
LNG Tank A	<ul style="list-style-type: none"> Continued construction of inner shell ring 2. Continued erection of waterfall support. Continued construction of main pump platform. Continued erection of Pressure Relief Valve (PRV) structure. Continued installation of roof walkway and emergency ladder. Commenced installation of bottom insulation construction. Commence pushing horizontal Post Tensioning strands. Completed installation of base slab heater cable. 	<ul style="list-style-type: none"> Complete construction of inner shell ring 2. Complete installation of base slab heater cable. Complete erection of waterfall support. Complete roof walkway and emergency ladder. Complete erection of PRV structure. Complete external stairway. Continue construction of main pump platform. Continue installation of bottom insulation. Continue pushing horizontal Post Tensioning (PT) strands. Commence construction of inner shell ring 3. Commence installation of waterfall riser pipe. Commence installation of large and small bore pipe. Commence miscellaneous electrical installation.
LNG Tank C	<ul style="list-style-type: none"> Completed roof rebar. Completed installation and stressing of Post Tensioning (PT) horizontal strands in wall lift. Completed closing inner tank in preparation for roof pressurization. Completed roof concrete placement and depressurization of tank. Continued construction of inner shell ring 2. Continued rebar and formwork for roof pedestals and nozzles. Commenced installation of base slab heater cable. Commenced concrete placement for roof nozzles. 	<ul style="list-style-type: none"> Continue installation of base slab heater cable. Complete construction of inner shell ring 2. Complete rebar, formwork and concrete placement for roof pedestals and nozzles. Complete vertical tendon Post Tensioning. Commence construction of inner shell ring 3. Commence installation of PRV structure. Commence instrumentation platform and roof handrail.
Access Roads / Buildings	<ul style="list-style-type: none"> Continued road construction. Continued installation of pre-cast headwalls. 	<ul style="list-style-type: none"> Continue road construction. Continue pre-cast headwalls.
Marine Area	<ul style="list-style-type: none"> Continued concrete placement at East Jetty superstructure and Jetty piers. Continued concrete placements/installations of girders, diaphragms, precast slab panels, Cast in Place (CIP) concrete deck and handrails at West Jetty. 	<ul style="list-style-type: none"> Continue concrete placement at East Jetty superstructure and Jetty piers. Continue placement/installation of girders, diaphragms, precast slab panels, Cast in Place (CIP) concrete deck and handrails at West Jetty superstructure.

6.0 Permitting and Environmental

No updates to any environmental permits or the Emergency Response Plan were made during the April reporting period.

Summary of Problems, Non-Compliances, and Corrective Actions

Date	Description
N/A	

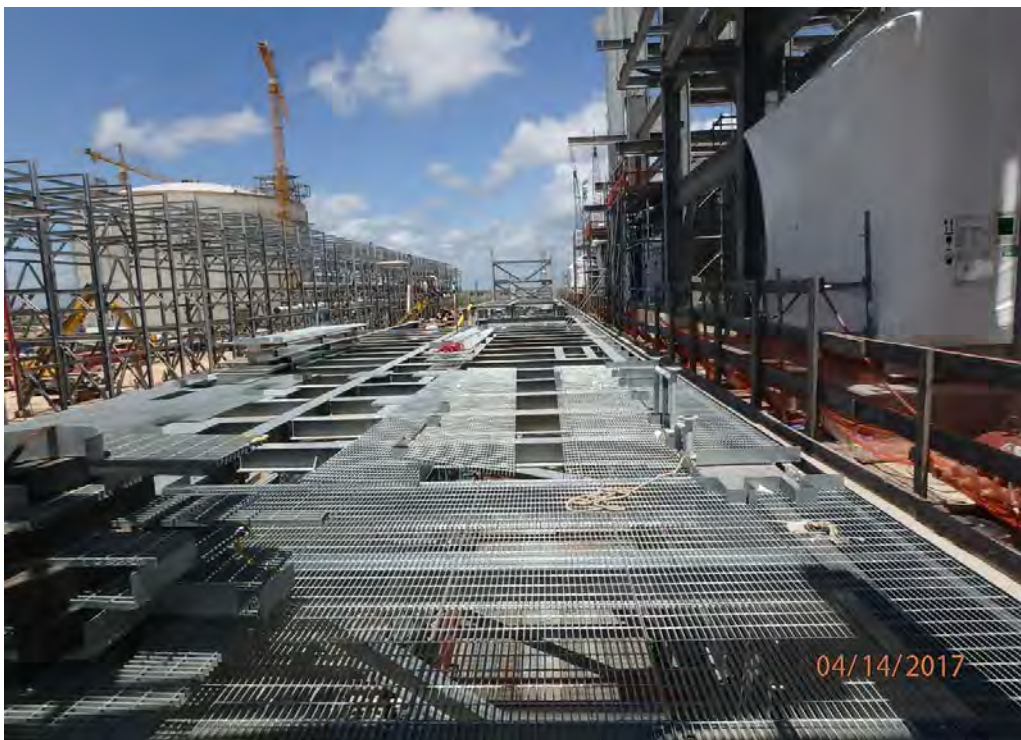
Agency Contacts/Inspections

Agency	Name	Date	Location/Activity
N/A			

7.0 Progress Pictures



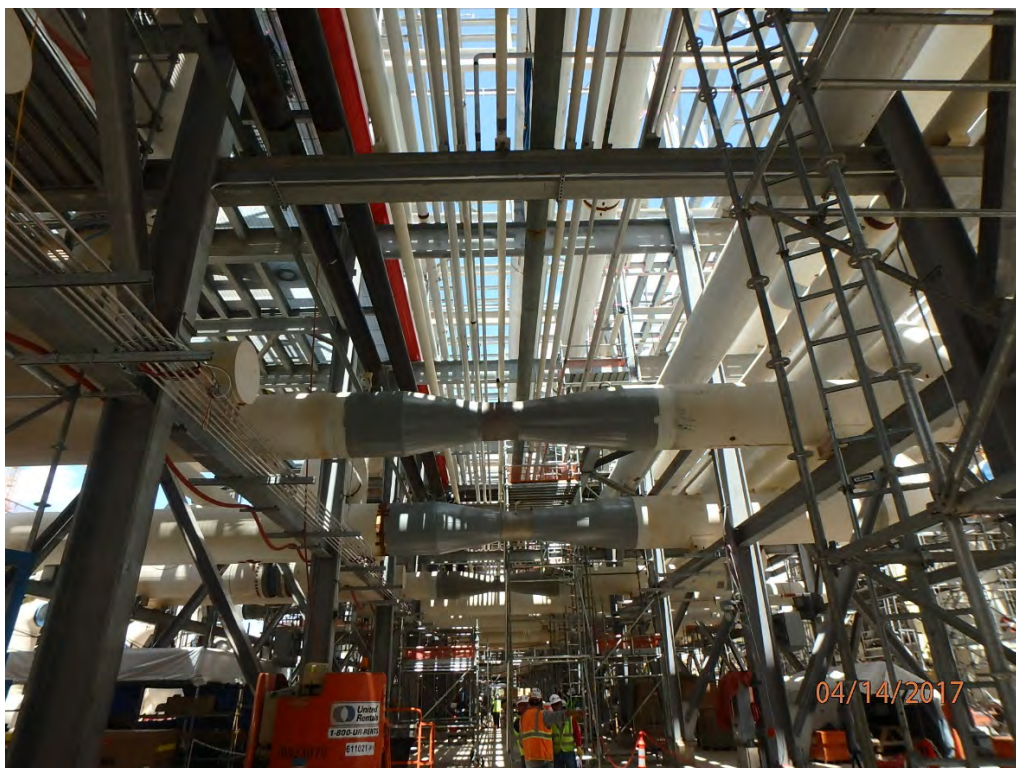
Train 1 – Methane Cold Box on Foundation



Train 1 – Filter House Steel and Grating Installation



Train 2 – Setting Solvent Flash Drum



Train 2 – Cryo Rack Installation



Train 2 – Propane Condenser Pipe Installation



LNG Tank C – Roof Concrete Placement

Corpus Christi Liquefaction, LLC
April 2017 Monthly Progress Report



OSBL – Alamo Road Bridge Installation



OSBL – Sump Wall Rebar Installation



OSBL – West Jetty Concrete Placement



Train 1- Cold Box SPMT Site

Corpus Christi Liquefaction, LLC
April 2017 Monthly Progress Report



Train 1- Installation of Cold Box



Train 1 – OSBL

Corpus Christi Liquefaction, LLC
April 2017 Monthly Progress Report



Train 2 - OSBL



Marine West Berth

CORPUS CHRISTI LIQUEFACTION PROJECT

Corpus Christi, Texas

**MONTHLY PROGRESS REPORT
MAY 2017**

FERC DOCKET NO. CP12-507-000

Table of Contents

1.0 Executive Summary..... 3

2.0 Project Highlights 3

3.0 Environmental, Safety, and Health Progress 3

4.0 Schedule 3

5.0 Construction..... 4

6.0 Permitting and Environmental..... 6

7.0 Progress Pictures..... 7

1.0 Executive Summary

This report covers activities of the CCL project that occurred during the month of May 2017.

Engineering has progressed to 100.0%. Procurement has progressed to 86.9%. Subcontract and direct hire construction work are 34.2% and 37.0% complete, respectively. The total Project has progressed to 65.6% complete against the plan of 65.3%.

2.0 Project Highlights

Construction focused on progressing permanent plant concrete and structural steel, underground and aboveground pipe, electrical and equipment installation. Major highlights for May included delivery and setting of Train 2 Refrigeration Compressors, setting of Gas Insulated Substation (GIS) Building, setting of the first Field Instruments, setting of the first BOG Compressor, and commencement of OSBL aboveground pipe hydro testing.

3.0 Environmental, Safety, and Health Progress

	Near Miss		First Aid		Recordable		Lost Time	
	Month	ITD ¹	Month	ITD ¹	Month	ITD ¹	Month	ITD ¹
Bechtel	33	315	51	626	1	22	0	1
Subcontractor	1	25	3	17	1	2	0	2
Total	34	340	54	643	2	24	0	3

1. ITD = Inception to Date.

4.0 Schedule

The overall Project has progressed to 65.6%. Activities planned for the month of June 2017 are on track.

5.0 Construction

Area	Construction Activities in May	Planned Work for June
ISBL Train 1 Compressor Area / Cryogenic Piperack / Propane Refrigeration	<ul style="list-style-type: none"> Continued concrete foundations, pedestals and area paving in various areas. Continued setting mechanical equipment. Continued erection of structural steel. Continued installation of aboveground pipe. Continued cable tray installation. Continued conduit installation. Continued cable tray pulling. Continued installation of lighting and fixtures. 	<ul style="list-style-type: none"> Continue placement of foundations, pedestals and area paving in various areas. Continue setting mechanical equipment. Continue erection of structural steel. Continue installation of aboveground pipe. Continue cable tray installation. Continue cable tray pulling. Continue conduit installation. Continue installation of lighting and fixtures.
Train 2	<ul style="list-style-type: none"> Completed concrete foundations, pedestals and area paving in various areas. Continued erection of structural steel. Continued setting mechanical equipment. Continued erection of structural steel. Continued installation of aboveground pipe. Continued cable tray installation. Continued conduit installation. 	<ul style="list-style-type: none"> Continue placement of foundations, pedestals and area paving in various areas. Continue erection of structural steel. Continue setting mechanical equipment. Continue installation of aboveground pipe. Continue cable tray installation. Continue conduit installation.
OSBL / Refrigerant Storage Area / Process Piperack	<ul style="list-style-type: none"> Continued concrete foundations and pedestals in various areas. Continued erection of structural steel. Continued installation of aboveground pipe. Continued installation of mechanical equipment. Continued setting the GIS building. Continued cable tray installation. Continued wire and cable pulling. 	<ul style="list-style-type: none"> Continue concrete foundations and pedestals in various areas. Continue setting BOG compressors. Continue installation aboveground pipe. Continued cable tray installation. Continue setting mechanical equipment. Continue erection of structural steel. Continued wire and cable pulling.

Corpus Christi Liquefaction, LLC
May 2017 Monthly Progress Report

Area	Construction Activities in May	Planned Work for June
LNG Tank A	<ul style="list-style-type: none"> Completed erecting waterfall support. Completed construction of inner shell ring 2. Completed setting jib crane base section. Continued construction of inner shell ring 3. Continued construction of main pump platform. Continued erection of Pressure Relief Valve (PRV) structure. Continued pushing horizontal Post Tensioning strands. Continued pipe spools installations. Continued miscellaneous electrical installation. Continued installation of Stage 2 bottom insulation. 	<ul style="list-style-type: none"> Continue erecting main pump platform. Continue erection of PRV structure. Continue pushing horizontal strands. Continued pipe spools installation. Continue miscellaneous electrical installation. Continue installation of Stage 2 bottom insulation. Complete construction of inner shell rings 3 and 4. Commence construction of inner shell ring 5.
LNG Tank C	<ul style="list-style-type: none"> Completed tugging vertical strands. Commenced setting PRV structure. Commenced stressing vertical tendons. Continued construction of inner shell ring 2. Continued rebar and formwork for roof pedestals. Continued concrete placement. Continued pipe assembly. Continued erecting roof handrail. 	<ul style="list-style-type: none"> Continue setting PRV structure. Continue pipe assembly. Continue top sides structural steel work. Complete construction of inner shell rings 2 and 3. Complete rebar, formwork and concrete placement for roof pedestals and stressing vertical tendons. Commence construction of inner shell ring 4.
Access Roads / Buildings	<ul style="list-style-type: none"> N/A 	<ul style="list-style-type: none"> N/A
Marine Area	<ul style="list-style-type: none"> Continued concrete placement at East Jetty superstructure. Continued concrete placements/installations of girders, diaphragms, precast slab panels, Cast in Place (CIP) concrete deck and handrails at West Jetty. 	<ul style="list-style-type: none"> Continue concrete placement at East Jetty superstructure. Continue placement/installation of girders, diaphragms, precast slab panels, Cast in Place (CIP) concrete deck and handrails at West Jetty.

6.0 Permitting and Environmental

No updates to any environmental permits or the Emergency Response Plan were made during the May reporting period.

Summary of Problems, Non-Compliances, and Corrective Actions

Date	Description
N/A	None.

Agency Contacts/Inspections

Agency	Name	Date	Location/Activity
FERC	Steven Kusy	May 16, 2017	Construction Inspection. No deficiencies noted.

7.0 Progress Pictures



Train 1 – Pipe Installation



Train 1 – Hot Oil Drum Mechanical Insulation

Corpus Christi Liquefaction, LLC
May 2017 Monthly Progress Report



Train 1 – Cryo Fin Fan Setting



Train 2 – Compressors Setting



Train 2 – Cryo Rack Pipe Installation



LNG Tank A – Waterfall Support Steel Installation

Corpus Christi Liquefaction, LLC
May 2017 Monthly Progress Report



OSBL – Cable Tray Waterfall Installation



OSBL – GIS Building Setting



OSBL – Flare Knockout Drum Pipe Installation



OSBL – East Jetty Diaphragm Formwork Installation



Aerial - Marine East Berth



Aerial - Marine West Berth



LNG Train 1



LNG Train 2

CORPUS CHRISTI LIQUEFACTION PROJECT

Corpus Christi, Texas

**MONTHLY PROGRESS REPORT
JUNE 2017**

FERC DOCKET NO. CP12-507-000

Table of Contents

1.0 Executive Summary..... 3

2.0 Project Highlights 3

3.0 Environmental, Safety, and Health Progress 3

4.0 Schedule 3

5.0 Construction..... 4

6.0 Permitting and Environmental..... 6

7.0 Progress Pictures..... 7

1.0 Executive Summary

This report covers activities of the CCL project that occurred during the month of June 2017.

Engineering has progressed to 100.0%. Procurement has progressed to 87.8%. Subcontract and direct hire construction work are 39.2% and 41.0% complete, respectively. The total Project has progressed to 67.9% complete against the plan of 67.7%.

2.0 Project Highlights

Construction focused on progressing permanent plant concrete, structural steel, aboveground pipe, electrical and equipment installation. Major highlights for June included setting Train 2 Methane Cold Box, OSBL pipeline gas compressor equipment and mineral lube oil skids. Fire and gas detection system conduits and panels' installation commenced in Train 1. Alstom deployed to site to commence pre-commission activities of the Gas-insulated Switchgear station.

3.0 Environmental, Safety, and Health Progress

	Near Miss		First Aid		Recordable		Lost Time	
	Month	ITD ¹	Month	ITD ¹	Month	ITD ¹	Month	ITD ¹
Bechtel	32	347	64	690	2	24	0	1
Subcontractor	1	26	7	24	0	2	0	2
Total	33	373	71	714	2	26	0	3

1. ITD = Inception to Date.

4.0 Schedule

The overall Project has progressed to 67.9%. Activities planned for the month of July 2017 are on track.

5.0 Construction

Area	Construction Activities in June	Planned Work for July
ISBL Train 1 Compressor Area / Cryogenic Piperack / Propane Refrigeration	<ul style="list-style-type: none"> Continued concrete foundations, pedestals and area paving in various areas. Continued setting mechanical equipment. Continued erection of structural steel. Continued installation of aboveground pipe. Continued cable tray installation. Continued conduit installation. Continued cable tray pulling. Continued installation of lighting and fixtures. 	<ul style="list-style-type: none"> Continue placement of foundations, pedestals and area paving in various areas. Continue setting mechanical equipment. Continue erection of structural steel. Continue installation of aboveground pipe. Continue cable tray installation. Continue cable tray pulling. Continue conduit installation. Continue installation of lighting and fixtures.
Train 2	<ul style="list-style-type: none"> Completed concrete foundations, pedestals and area paving in various areas. Continued erection of structural steel. Continued setting mechanical equipment. Continued erection of structural steel. Continued installation of aboveground pipe. Continued cable tray installation. Continued conduit installation. 	<ul style="list-style-type: none"> Continue placement of foundations, pedestals and area paving in various areas. Continue erection of structural steel. Continue setting mechanical equipment. Continue installation of aboveground pipe. Continue cable tray installation. Continue conduit installation.
OSBL / Refrigerant Storage Area / Process Piperack	<ul style="list-style-type: none"> Continued concrete foundations and pedestals in various areas. Continued erection of structural steel. Continued installation of aboveground pipe. Continued installation of mechanical equipment. Continued setting the GIS building. Continued cable tray installation. Continued wire and cable pulling. 	<ul style="list-style-type: none"> Continue concrete foundations and pedestals in various areas. Continue installation aboveground pipe. Continued cable tray installation. Continue setting mechanical equipment. Continue erection of structural steel. Continued wire and cable pulling.

Corpus Christi Liquefaction, LLC
June 2017 Monthly Progress Report

Area	Construction Activities in June	Planned Work for July
LNG Tank A	<ul style="list-style-type: none"> Completed construction of inner shell ring 3. Continued erection of main pump platform. Continued erecting roof walkway. Continued pushing horizontal strands. Continued installation of pipe spools in main pump platform. Continued miscellaneous electrical installation. Continued installation of Stage 2 bottom insulation. Continued construction of inner shell ring 4. Commenced construction of inner shell ring 5. 	<ul style="list-style-type: none"> Continue erecting main pump platform. Continue installing pipe spools in main pump platform. Continue miscellaneous electrical installation. Continue construction of inner shell ring 5. Continue installation of Stage 2 bottom insulation. Complete construction of inner shell ring 4 and 5. Complete pushing horizontal strands. Commence stressing horizontal tendons. Commence construction of inner shell ring 6. Commence installation of large and small bore pipe on topsides structures.
LNG Tank C	<ul style="list-style-type: none"> Completed stressing vertical tendons and rebar. Completed formwork and concrete placement for roof pedestals and nozzles. Completed construction of inner shell ring 2. Completed removal of outer wall formwork. Continued erection of main pump platform. Continued setting Pressure Relief Valve (PRV) structure. Continued pipe preassembly. Continued installation of Stage 2 bottom insulation. Continued construction of inner shell ring 3. 	<ul style="list-style-type: none"> Continue erecting main pump platform. Continue pipe preassembly and installation of Stage 2 bottom insulation. Complete construction of inner shell ring 3. Commence construction of inner shell ring 4. Commence installation of pipe spools in main pump platform. Commence miscellaneous electrical installation.
Access Roads / Buildings	<ul style="list-style-type: none"> N/A 	<ul style="list-style-type: none"> N/A
Marine Area	<ul style="list-style-type: none"> Continued concrete placement at East Jetty superstructure. Continued concrete placements/installations of girders, diaphragms, precast slab panels, Cast in Place (CIP) concrete deck and handrails at West Jetty. 	<ul style="list-style-type: none"> Continue concrete placement at East Jetty superstructure. Continue placement/installation of girders, diaphragms, precast slab panels, Cast in Place (CIP) concrete deck and handrails at West Jetty.

6.0 Permitting and Environmental

No updates to any environmental permits or the Emergency Response Plan were made during the June reporting period.

Summary of Problems, Non-Compliances, and Corrective Actions

Date	Description
6/20/2017	CCL's contractor, Luhr Bro's, was operating an excavator near the Project shoreline when a hydraulic hose broke resulting in the release of approximately 1 gallon of hydraulic oil into La Quinta Channel. The release resulted in a 20ft x 20ft sheen. All released oil was contained with boom and cleaned up using absorbent pads. The National Response Center ("NRC") and Texas General Land Office ("TGLO") were notified. The TGLO and US Coast Guard ("USCG") conducted an inspection of the site and determined that the cleanup was complete and no further action was required.
6/24/2017	CCL's contractor, Luhr Bro's, was operating an excavator near the Project shoreline when a hydraulic hose broke resulting in the release of approximately 1.5 gallon of hydraulic oil into La Quinta Channel. The release resulted in a 30ft x 30ft sheen. All released oil was contained with boom and cleaned up using absorbent pads. The NRC and TGLO were notified. The TGLO and USCG conducted an inspection of the site and determined that the cleanup was complete and no further action was required.

Agency Contacts/Inspections

Agency	Name	Date	Location/Activity
N/A			

7.0 Progress Pictures



Train 1 – HVAC Installation



Train 1 – Pipe Installation

Corpus Christi Liquefaction, LLC
June 2017 Monthly Progress Report



Train 1 – Dehydration/Mercury Removal Area



Train 2 – Pipe Installation

Corpus Christi Liquefaction, LLC
June 2017 Monthly Progress Report



Train 2 – Compressor Deck Area

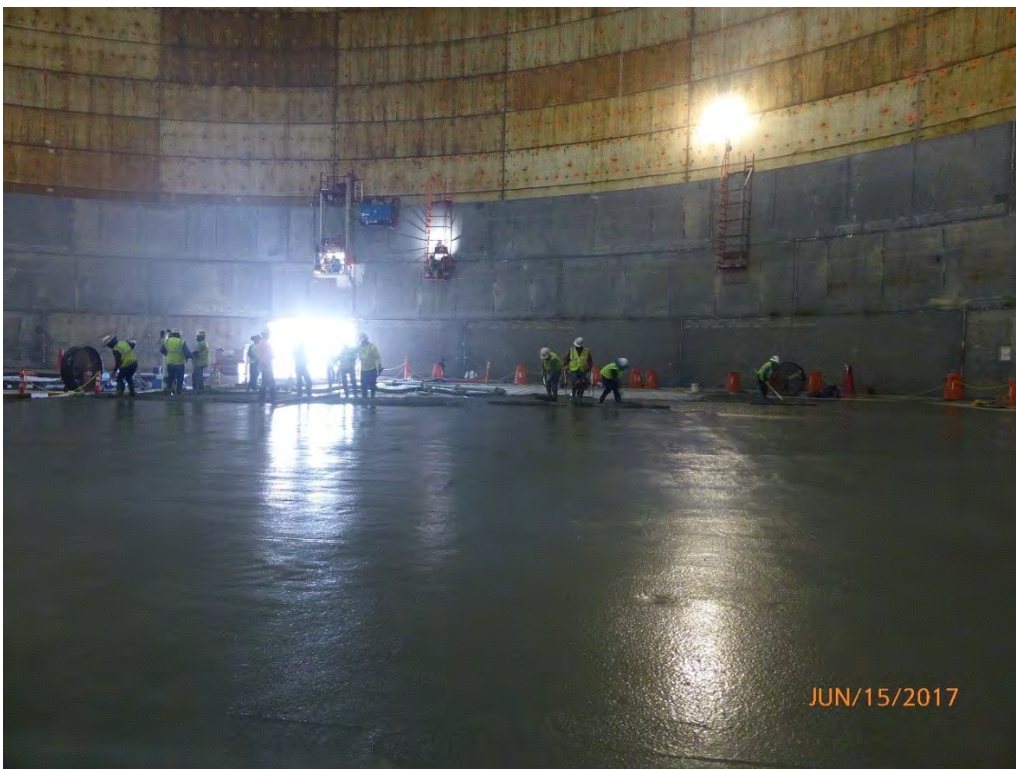


Train 2 – Cable Tray Staging In Preparation for Installation

Corpus Christi Liquefaction, LLC
June 2017 Monthly Progress Report



LNG Tank A – Main Pump Platform Installation



LNG Tank C – Stage 2 Bottom Insulation 2nd Layer Leveling Concrete Installation

Corpus Christi Liquefaction, LLC
June 2017 Monthly Progress Report



OSBL – Impoundment Basin Area



OSBL – BOG Compressor Area

Corpus Christi Liquefaction, LLC
June 2017 Monthly Progress Report



Marine West Berth



Marine East Berth

CORPUS CHRISTI LIQUEFACTION PROJECT

Corpus Christi, Texas

**MONTHLY PROGRESS REPORT
JULY 2017**

FERC DOCKET NO. CP12-507-000

Table of Contents

1.0 Executive Summary..... 3

2.0 Project Highlights 3

3.0 Environmental, Safety, and Health Progress 3

4.0 Schedule 3

5.0 Construction..... 4

6.0 Permitting and Environmental..... 6

7.0 Progress Pictures..... 7

1.0 Executive Summary

This report covers activities of the CCL project that occurred during the month of July 2017.

Engineering has progressed to 100.0%. Procurement has progressed to 88.7%. Subcontract and direct hire construction work are 40.9% and 44.2% complete, respectively. The total Project has progressed to 69.6% complete against the plan of 69.5%.

2.0 Project Highlights

Construction focused on progressing permanent plant concrete, structural steel, aboveground pipe, electrical and equipment installation. Major highlights for July included setting final propane feed chiller, commenced setting IAC air coolers, completed preliminary alignment for Train 2 refrigeration compressors, completed setting Train 2 propane rack air coolers and continued high voltage work in preparation for GIS and main substation energization.

3.0 Environmental, Safety, and Health Progress

	Near Miss		First Aid		Recordable		Lost Time	
	Month	ITD ¹	Month	ITD ¹	Month	ITD ¹	Month	ITD ¹
Bechtel	20	367	51	741	4	28	0	1
Subcontractor	1	27	0	24	1	3	0	2
Total	21	394	51	765	5	31	0	3

1. ITD = Inception to Date.

4.0 Schedule

The overall Project has progressed to 69.6%. Activities planned for the month of August 2017 are on track.

5.0 Construction

Area	Construction Activities in July	Planned Work for August
ISBL Train 1 Compressor Area / Cryogenic Piperack / Propane Refrigeration	<ul style="list-style-type: none"> Continued concrete foundations, pedestals and area paving in various areas. Continued setting mechanical equipment. Continued erection of structural steel. Continued installation of aboveground pipe. Continued cable tray installation. Continued conduit installation. Continued cable tray pulling. Continued installation of lighting and fixtures. Continued pipe testing and installation of instruments. 	<ul style="list-style-type: none"> Continue placement of foundations, pedestals and area paving in various areas. Continue setting mechanical equipment. Continue erection of structural steel. Continue installation of aboveground pipe/testing. Continue cable tray installation. Continue cable tray pulling. Continue conduit installation. Continue installation of lighting and fixtures. Continue pipe testing and installation of instruments.
Train 2	<ul style="list-style-type: none"> Completed concrete foundations, pedestals and area paving in various areas. Continued erection of structural steel. Continued setting mechanical equipment. Continued erection of structural steel. Continued installation of aboveground pipe. Continued cable tray installation. Continued conduit installation. Continued installation of lighting and fixtures. 	<ul style="list-style-type: none"> Continue placement of foundations, pedestals and area paving in various areas. Continue erection of structural steel. Continue setting mechanical equipment. Continue installation of aboveground pipe. Continue cable tray pulling. Continue conduit installation. Continue installation of lighting and fixtures.
OSBL / Refrigerant Storage Area / Process Piperack	<ul style="list-style-type: none"> Continued concrete foundations and pedestals in various areas. Continued erection of structural steel. Continued installation of aboveground pipe and testing. Continued installation of mechanical equipment. Continued cable tray installation. Continued conduit installation. Continued wire and cable pulling. 	<ul style="list-style-type: none"> Continue concrete foundations and pedestals in various areas. Continue installation aboveground pipe. Continue cable tray installation. Continue setting mechanical equipment. Continue erection of structural steel. Continued wire and cable pulling. Continue conduit installation. Continue flare preassembly.

Corpus Christi Liquefaction, LLC
July 2017 Monthly Progress Report

Area	Construction Activities in July	Planned Work for August
	<ul style="list-style-type: none"> Commenced flare preassembly. 	
LNG Tank A	<ul style="list-style-type: none"> Completed construction of inner shell ring 4. Completed pushing horizontal strands. Continued erection of main pump platform. Continued installation of pipe spools in main pump platform. Continued miscellaneous electrical installation. Continued installation of Stage 2 bottom insulation. Continued construction of inner shell ring 5. Continued stressing horizontal tendons. Commenced construction of inner shell ring 6. 	<ul style="list-style-type: none"> Complete erection of main pump platform. Complete stress horizontal tendons and construction on inner shell rings 5 and 6. Continue installation of pipe spools in main pump platform. Continue miscellaneous electrical installation. Continue installation of Stage 2 bottom insulation. Commence construction of inner shell ring 7. Commence preassembly of pump tubes.
LNG Tank C	<ul style="list-style-type: none"> Completed construction of inner shell ring 3. Continued erection of main pump platform. Continued pipe preassembly. Continued installation of Stage 2 bottom insulation. Continued construction of inner shell ring 4. 	<ul style="list-style-type: none"> Complete construction of inner shell rings 4 and 5. Continue erection of main pump platform. Continue pipe preassembly. Continue installation of Stage 2 bottom insulation. Commence construction of inner shell ring 6. Commence installation of waterfall riser pipe. Commence pushing horizontal strands.
Access Roads / Buildings	<ul style="list-style-type: none"> N/A 	<ul style="list-style-type: none"> N/A
Marine Area	<ul style="list-style-type: none"> Continued construction of loading platforms, pedestals, and curbs at West Jetty. Continued construction of diaphragms and protection slabs at East Jetty. Continued installation of Marine equipment. 	<ul style="list-style-type: none"> Continue construction of loading platforms, pedestals, and curbs at West Jetty. Commence turnover of West Jetty to the LNG OSBL Team. Continue installation of Marine equipment. Continue construction of diaphragms and protection slabs at East Jetty.

6.0 Permitting and Environmental

No updates to any environmental permits or the Emergency Response Plan were made during the July reporting period.

Summary of Problems, Non-Compliances, and Corrective Actions

Date	Description
N/A	

Agency Contacts/Inspections

Agency	Name	Date	Location/Activity
DOT-PHMSA	Daniel Rickenson Anthony Wright Chad Hall	July 17-20, 2017	Representatives from DOT-PHMSA Southwest Regional office performed an inspection at the Corpus Christi Liquefaction Facility to review Engineering Modules 12 and 14. No major problem areas were noted.

7.0 Progress Pictures



Train 1 – Setting Propane-Methane / Ethylene Feed chiller



Train 1 – Setting Ethylene Mixing Tee

Corpus Christi Liquefaction, LLC
July 2017 Monthly Progress Report

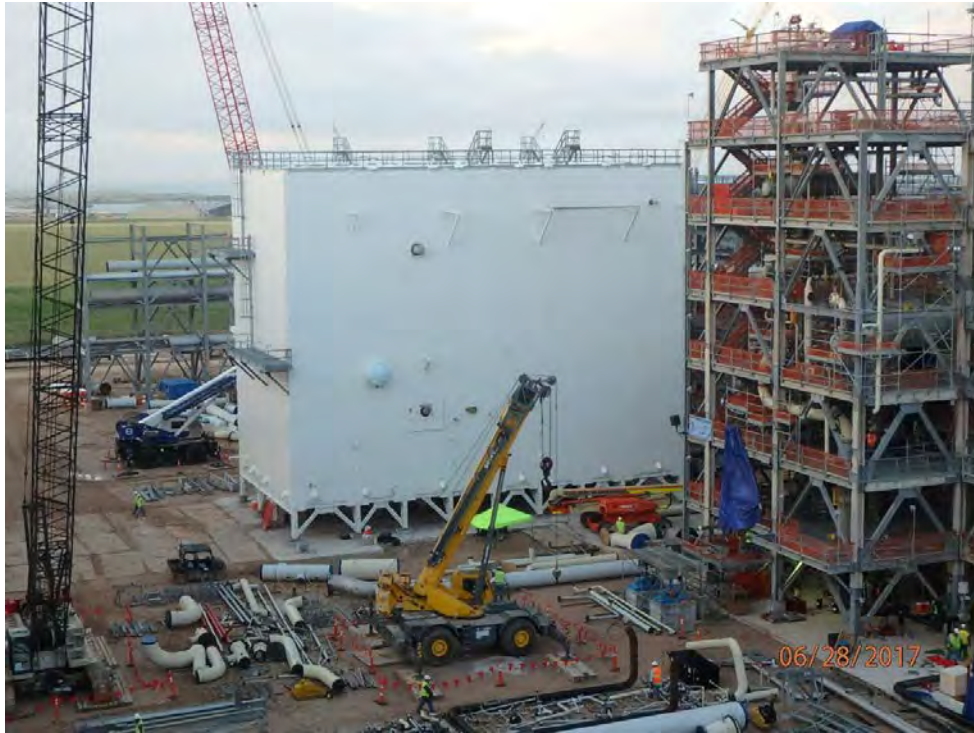


Train 1 – Hot Oil Area



Train 1 – Fin Fan Header Installation

Corpus Christi Liquefaction, LLC
July 2017 Monthly Progress Report



Train 2 – Setting Methane Cold Box



Train 2 – Compressor Area Steel Erection

Corpus Christi Liquefaction, LLC
July 2017 Monthly Progress Report



Train 2 – Amine Regen and Acid Gas Removal Area Paving



LNG Tank A – Pipe Installation

Corpus Christi Liquefaction, LLC
July 2017 Monthly Progress Report



LNG Tank C – Main Pump Platform and Piping Installation



OSBL – Flare Derrick Staging

Corpus Christi Liquefaction, LLC
July 2017 Monthly Progress Report



OSBL – BOG Compressor Area



OSBL – Protection Slab Curb Concrete Pour

Corpus Christi Liquefaction, LLC
July 2017 Monthly Progress Report



Marine West Berth



MOF

CORPUS CHRISTI LIQUEFACTION PROJECT

Corpus Christi, Texas

**MONTHLY PROGRESS REPORT
AUGUST 2017**

FERC DOCKET NO. CP12-507-000

Table of Contents

1.0 Executive Summary..... 3

2.0 Project Highlights 3

3.0 Environmental, Safety, and Health Progress 3

4.0 Schedule 3

5.0 Construction..... 4

6.0 Permitting and Environmental..... 6

7.0 Progress Pictures..... 7

1.0 Executive Summary

This report covers activities of the CCL project that occurred during the month of August 2017.

Engineering has progressed to 100.0%. Procurement has progressed to 89.2%. Subcontract and direct hire construction work are 47.8% and 48.0% complete, respectively. The total Project has progressed to 71.7% complete against the plan of 72.1%.

2.0 Project Highlights

Construction focused on progressing permanent plant concrete, structural steel, aboveground pipe, electrical and equipment installation. Major highlights for August included setting the Train 1 filter houses, handover of the west jetty to the OSBL LNG team, installation of the first remediated galvanized spools and the continuation of high voltage work in preparation for GIS and main substation energization.

3.0 Environmental, Safety, and Health Progress

	Near Miss		First Aid		Recordable		Lost Time	
	Month	ITD ¹	Month	ITD ¹	Month	ITD ¹	Month	ITD ¹
Bechtel	13	382	28	774	1	29	0	1
Subcontractor	5	38	0	26	0	3	0	2
Total	18	420	28	800	1	32	0	3

1. ITD = Inception to Date.

4.0 Schedule

The overall Project has progressed to 71.7%. Activities planned for the month of September 2017 are on track.

5.0 Construction

Area	Construction Activities in August	Planned Work for September
ISBL Train 1 Compressor Area / Cryogenic Piperack / Propane Refrigeration	<ul style="list-style-type: none"> Continued concrete foundations, pedestals and area paving in various areas. Continued setting mechanical equipment. Continued erection of structural steel. Continued installation of aboveground pipe. Continued cable tray installation. Continued conduit installation. Continued cable pulling. Continued installation of lighting and fixtures. Continued pipe testing and installation of instruments. 	<ul style="list-style-type: none"> Continue placement of foundations, pedestals and area paving in various areas. Continue setting mechanical equipment. Continue erection of structural steel. Continue installation of aboveground pipe. Continue cable tray installation. Continue conduit installation. Continue cable pulling. Continue conduit installation. Continue installation of lighting and fixtures. Continue pipe testing and installation of instruments.
Train 2	<ul style="list-style-type: none"> Completed concrete foundations, pedestals and area paving in various areas. Continued erection of structural steel. Continued setting mechanical equipment. Continued installation of aboveground pipe. Continued cable tray installation. Continued cable pulling. Continued conduit installation. Continued installation of lighting and fixtures. 	<ul style="list-style-type: none"> Continue placement of foundations, pedestals and area paving in various areas. Continue erection of structural steel. Continue setting mechanical equipment. Continue installation of aboveground pipe. Continue cable tray installation. Continue cable pulling. Continue conduit installation. Continue installation of lighting and fixtures.
OSBL / Refrigerant Storage Area / Process Piperack	<ul style="list-style-type: none"> Continued concrete foundations and pedestals in various areas. Continued erection of structural steel. Continued installation of aboveground pipe and testing. Continued installation of mechanical equipment. Continued cable tray installation. 	<ul style="list-style-type: none"> Continue concrete foundations and pedestals in various areas. Continue installation aboveground pipe and testing. Continue cable tray installation. Continue setting mechanical equipment. Continue erection of structural steel. Continued wire and cable pulling.

Corpus Christi Liquefaction, LLC
August 2017 Monthly Progress Report

Area	Construction Activities in August	Planned Work for September
	<ul style="list-style-type: none"> Continued conduit installation. Continued wire and cable pulling. Continued flare preassembly. 	<ul style="list-style-type: none"> Continue conduit installation. Continue stacking blocks. Complete flare preassembly.
LNG Tank A	<ul style="list-style-type: none"> Continued erection of main pump platform. Continued pipe erection in main pump platform. Continued miscellaneous electrical installation. Continued construction of inner shell ring 6 and 7. Continued preassembly of pump tubes. Commenced grouting horizontal tendons. 	<ul style="list-style-type: none"> Continue erection of main pump platform. Continue pipe erection in main pump platform. Continue miscellaneous electrical installation. Continue construction of inner shell ring 7 and 8. Continue preassembly of pump tubes. Complete grouting horizontal tendons.
LNG Tank C	<ul style="list-style-type: none"> Continued erection of main pump platform. Continued pipe preassembly. Continued installation of Stage 2 bottom insulation. Continued construction of inner shell ring 5. Continued pushing horizontal strands. 	<ul style="list-style-type: none"> Continue erection of main pump platform. Continue pipe preassembly. Continue installation of Stage 2 bottom insulation. Continue construction of inner shell ring 5 and 6. Continue pushing horizontal strand. Commence construction of inner shell ring 7.
Access Roads / Buildings	<ul style="list-style-type: none"> N/A 	<ul style="list-style-type: none"> N/A
Marine Area	<ul style="list-style-type: none"> Completed turnover of West Jetty to the LNG OSBL Team. Continued installation of marine equipment. Continued construction of diaphragms and protection slabs at East Jetty. 	<ul style="list-style-type: none"> Continue installation of marine equipment. Continue construction of diaphragms and protection slabs at East Jetty.

6.0 Permitting and Environmental

No updates to any environmental permits or the Emergency Response Plan were made during the August reporting period.

Preparations for Hurricane Harvey commenced on August 22, 2017 in accordance with the project's hurricane preparedness plan. The site was closed on August 24, 2017. Hurricane Harvey made landfall north of the Corpus Christi Area on August 25, 2017. The construction response team began assessment, clean-up, dewatering and repair efforts the following week after ensuring safe access to the site. No non-compliances resulted from Hurricane Harvey.

Summary of Problems, Non-Compliances, and Corrective Actions

Date	Description
N/A	

Agency Contacts/Inspections

Agency	Name	Date	Location/Activity
FERC	Steven Kusy Wimberly Dick	August 10, 2017	Construction Inspection. No deficiencies noted.

7.0 Progress Pictures



Train 1 – Cold Box Steel Installation



Train 1 – Steel/Ductwork Installation

Corpus Christi Liquefaction, LLC
August 2017 Monthly Progress Report



Train 1 – Fin Fan Header Installation



Train 1 – 131A01 Alleyway Pipe Installation

Corpus Christi Liquefaction, LLC
August 2017 Monthly Progress Report



Train 1 – Regen Gas Compressor Setting



Train 2 – Turbine Ductwork Installation

Corpus Christi Liquefaction, LLC
August 2017 Monthly Progress Report



LNG Tank C – Stage 2 Insulation Foam Glass Block



OSBL – BOG Area Steel Installation

Corpus Christi Liquefaction, LLC
August 2017 Monthly Progress Report



OSBL – Main Substation HVAC Installation



OSBL – Inlet Air Chilling Area Fin Fans Setting

Corpus Christi Liquefaction, LLC
August 2017 Monthly Progress Report



OSBL – Water Treatment Building

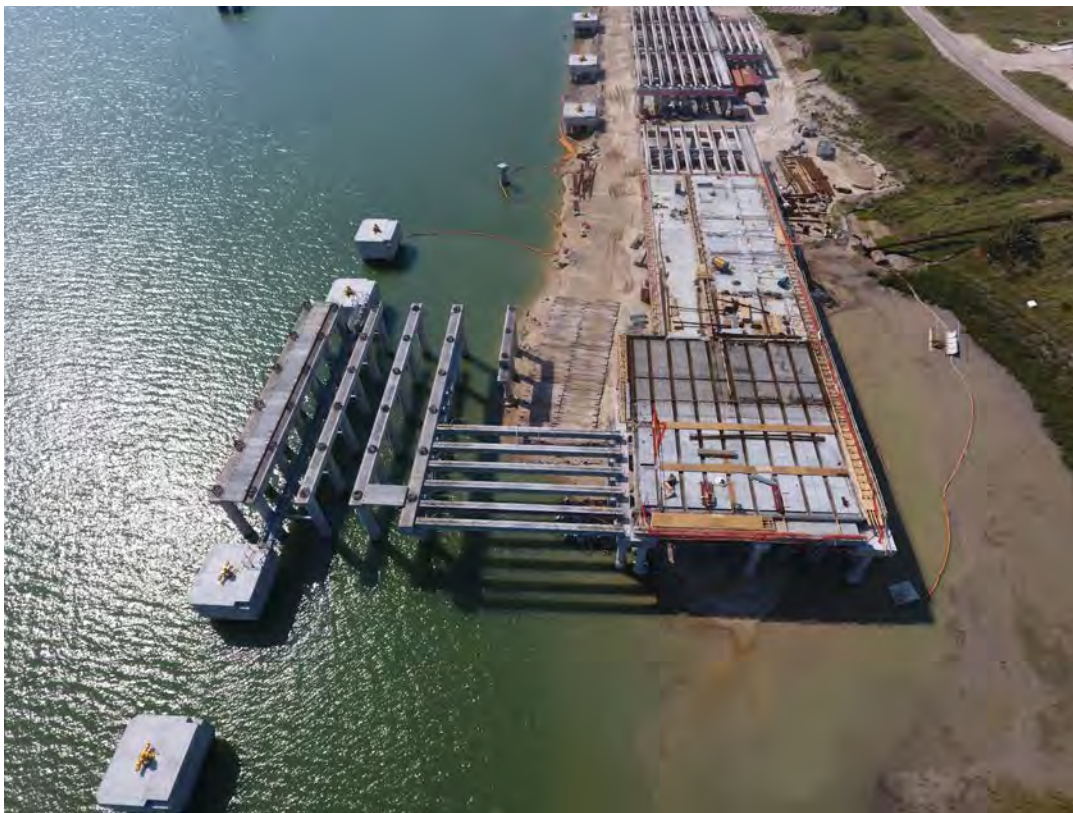


OSBL – East Jetty Girders

Corpus Christi Liquefaction, LLC
August 2017 Monthly Progress Report



West Berth

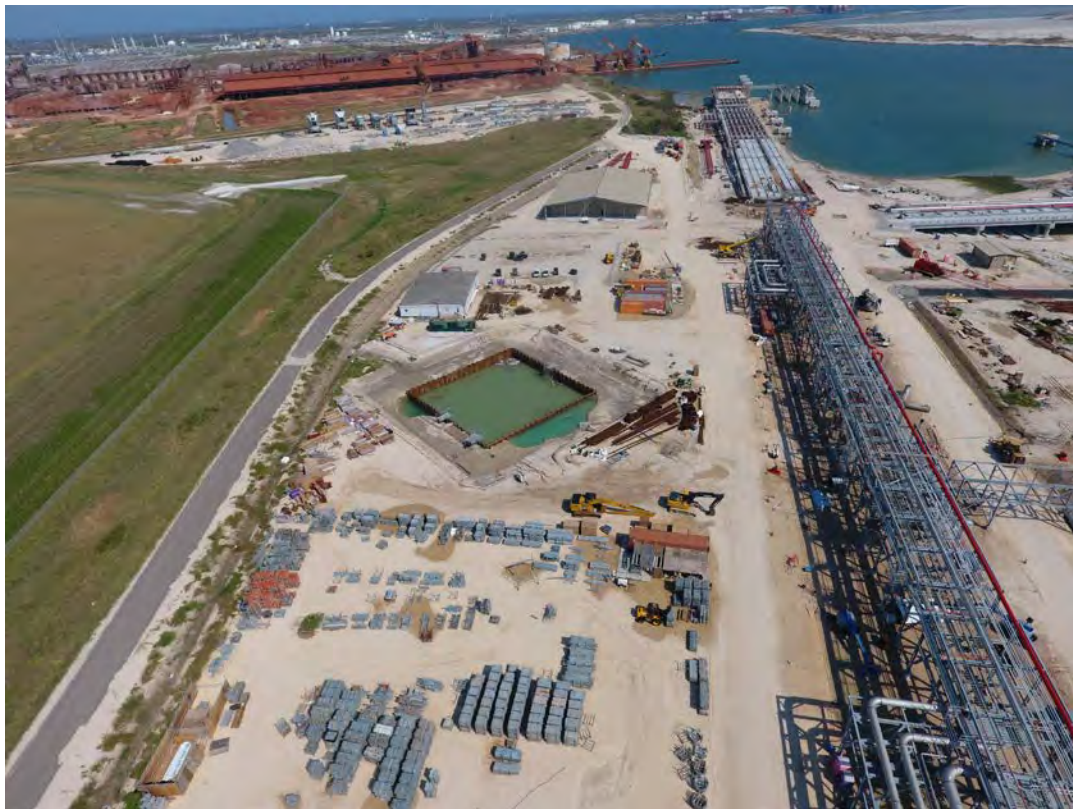


East Berth

Corpus Christi Liquefaction, LLC
August 2017 Monthly Progress Report



LNG Tanks



Marine Flare Sump