

A group of approximately 30 people, mostly men, are standing in a line in front of a large, rusted metal structure. The structure appears to be a bridge or a large industrial component, possibly a girder or a support for a bridge. It is made of heavy steel beams and is supported by large, rusted metal brackets. The background shows a clear blue sky and some distant hills. The overall scene is outdoors, likely at a construction or industrial site.

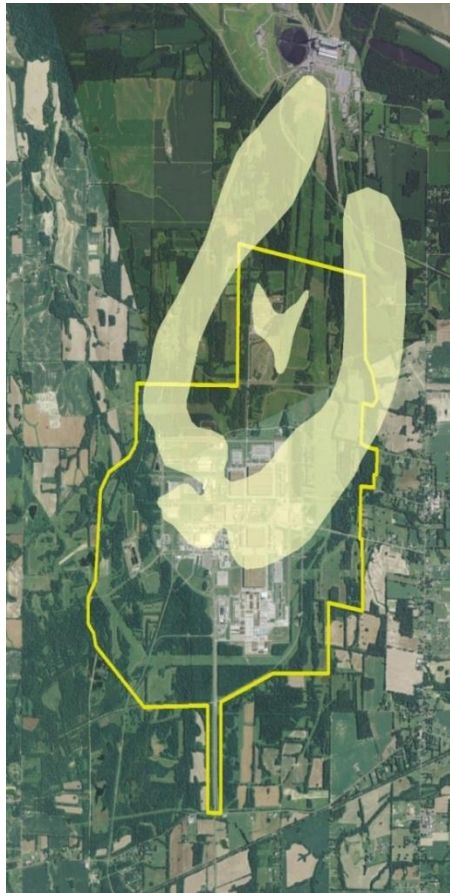
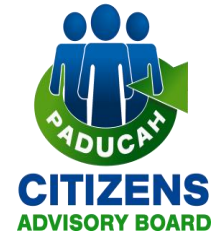
Chairs Round Robin

EM SSAB CHAIRS MEETING

PADUCAH, KENTUCKY

MAY 10, 2017

Paducah Citizens Advisory Board



- Aggressively **attack the source** of the largest offsite trichloroethene (TCE) groundwater plume in the DOE complex
- **Get agreement** from FFA parties to proceed with C-400 Complex full investigation and final remedy for all contamination
- **Continue deactivation** activities to lower surveillance and maintenance facilities' costs

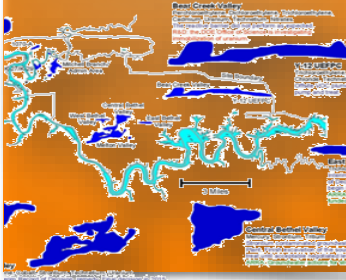
Oak Ridge Site-Specific Advisory Board



The Oak Ridge Site Specific Advisory Board has identified four upcoming priorities for Oak Ridge Reservation cleanup

Support Offsite Groundwater Monitoring

- Continue Offsite Groundwater Quality Assessment
- Examine potential offsite plume migration pathways
- Continue funding for offsite groundwater monitoring



Ensure Future Waste Disposal Capacity



- Plan for sufficient capacity at proposed new onsite disposal facility
- Secure adequate funding to complete future cleanup activities
- Establish a trust fund for long-term stewardship of onsite disposal facilities

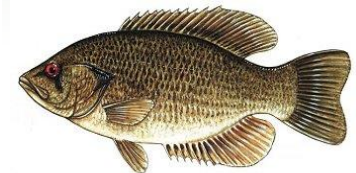
Excess Facilities Disposition



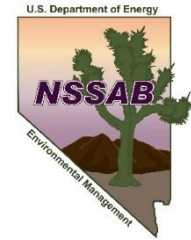
- Continue planning and implementing upfront activities
- Remove/decontaminate equipment not grossly contaminated
- Develop access plan to establish safe pathways; strengthen major structural sections
- Redirect any funding plus-ups for upfront activities

Address Mercury in East Fork Poplar Creek

- Continue technology development to support the Mercury Cleanup Strategy
- Work to mitigate mercury methylation in East Fork Poplar Creek
- Continue consistent funding for mercury technology development



Nevada Site Specific Advisory Board



Board Accomplishments:

- Active and diverse community involvement of all involved (e.g.)
- Observed Public Affairs Officers transportation emergency tabletop exercise in southern Nevada
- Added student intern from the University of Nevada, Las Vegas (UNLV)

Like the EM Complex, we embrace the field-centric paradigm, however there are...

Board interests/concerns:

- Focus on no lapses in safety and security processes at the Nevada National Security Site (NNSS) with the move to field-centric organization
- Concern for the impending “Brain Drain” with the loss of qualified people in the nuclear industry - EM Nevada Program 20% +/- loss

Portsmouth Site-Specific Advisory Board



- Become a closure fund site. Become DOE's next great success.
 - Why it's **the right path** forward:
 - Regulatory decisions are in place
 - No technical hurdles to overcome
 - Community agreement with direction and plan as has been stated
 - Talented and trained workforce ready to accelerate the project
 - SSAB, Economic Development groups, elected officials, the Ohio delegation all openly and avidly support ramping up and being DOE's next great success
- Continue and complete property transfers for future site reindustrialization.

Savannah River Site Citizens Advisory Board



- 2015 Recommendation - [Double-Stacking of Defense Waste Processing Facility Canisters](#)
 - Recommendation accepted by the Department of Energy. Double-Stacking has begun saving approximately \$1 million dollars.
 - Follow-up Recommendation in 2016 for recognizing Double Stacking Team and that was done at the March 2017 Full-Board CAB
- Recommendation – Improving Public Participation
 - Meeting locations spread throughout area affected by SRS Activities to engage and reach public.
 - Collaborative efforts to work with non-profit community groups and attending site tours.
- CAB Alumni Program – working on a meaningful way to engage former CAB members to continue their public participation and CAB attendance.

Idaho National Laboratory Site Environmental Management Citizens Advisory Board



- **Overriding Priority**

- Protection of the Snake River Plain Aquifer

- **Board Priorities**

- Monitor compliance to the Idaho Settlement Agreement and other cleanup-related regulatory and legal agreements
- Track cleanup progress
- Monitor progress on long-term milestones such as Spent Fuel and High-Level Waste
- Ensure adequate funding for near- and long-term activities
- Continue to act as a vital communication and information link between DOE and the citizens of Idaho

- **Near-Term Site Priorities**

- Idaho Waste Treatment Unit (IWTU) start-up
- Timely shipment of transuranic waste to WIPP
- Buried waste retrieval
- Future mission for AMWTP

Hanford Advisory Board



Priorities 2017/2018 and Beyond

- **Waste Treatment Plant – DFLAW**
 - Aggressive schedule for low activity processing by 2022
 - Aging, leaking tanks holding 53M gallons of waste
 - High level waste processing delayed until the 2030s
- **Plutonium Finishing Facility – down to slab on grade by end of 2017**
 - What contamination is underneath?
- **200 Area burial grounds/waste sites – cleanup milestones delayed again**
 - Threat of contamination to groundwater?
- **324 Building – highly radioactive plume under**
 - Close to Columbia River and city of Richland
 - Potential worker exposure during cleanup
- **Public involvement/education/information**
 - Need transparency and information exchange regardless of major cleanup decisions that require public comment periods.

Northern New Mexico Citizens' Advisory Board



- Transition to New EM Cleanup Contractor in 2017
- Implementation of Order on Consent with the Campaign Approach (including Supplemental Environmental Projects)
- Focus on Groundwater Cleanup and Protection (Cr Interim Measure)
- Remediated Nitrate Salts Treatment
- Resumption of National TRU Program and Shipments from LANL
- Monitoring and Controlling Surface Water (Contaminant Transport)
- Wildfire Mitigation in and Around Los Alamos