

Summary of Project Objectives

- Grant Program compliance
- Tribal Council Communications – Approval based on success
- Budgets and Timelines (Updated Budget = \$770,303 & (1 YEAR +/-)
- Energy modeling and technical support
- Design and Engineering
- Equipment Procurement
- Mobilization and staffing
- Proactive Project Management
- Interconnection
- Operations, Maintenance, and Asset Management long term



6 Department of Energy Renew:
Energy Grant Program



Construction Process: Staging and racking layouts

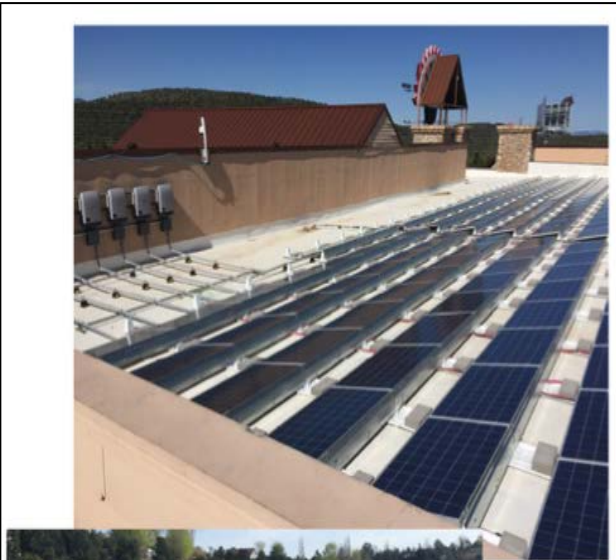
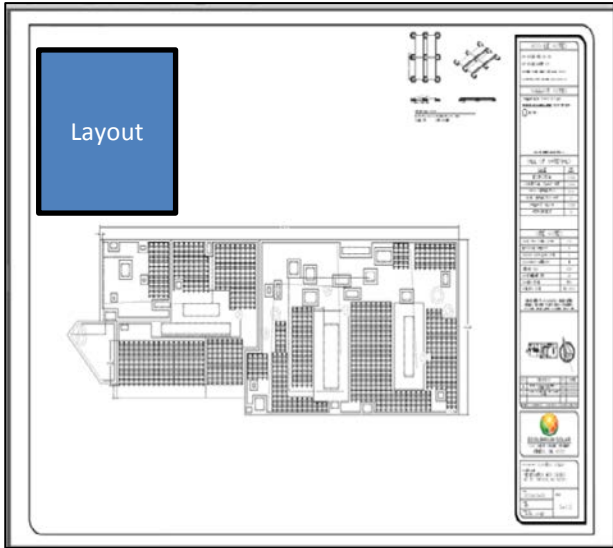


Department of Energy Renewable Energy
Grant Program



ENGINEERING: 270kW "roof top" ballast systems and design

NO ROOF PENETRATIONS



Key Components: HOTEL & CASINO

- Solar Panels: Nine Hundred Seventy (970) Bovivet 250W 60 Cell Poly Silver Frame (BVM6610P-250)
- Inverter(s) Thirteen (13) Fronius SYMO 15.0-3 208 LITE
- Racking: Ecolibrium ECOFOOT2+Base Racking

EcoFoot2+™

The next step in the EcoFoot line:

PV installation professionals tested EcoFoot2, helped us find ways to make it even better, and the result is EcoFoot2+™ - now with more validation, fewer parts, and increased design flexibility.

Three main components

The Foot
Our white UL-rated resin has heat deflection properties that deliver advantages on fully-exposed rooftops, and a Class A fire rated, UL705.

Preassembled Universal Clamp
The new preassembled universal clamp achieves integrated grounding without the use of grounding washers, UL 2003.

Wind Deflector
The corrosion-resistant wind deflector on every module helps resist uplift and reduce ballast requirements.

204 W. Sassa Street, Ashland, OH 43001 | 740-240-1077 | www.ecolibrium.com



Department of Energy Renewable Energy Grant Program



Future Projects

- Casino energy efficiency
 - LED parking pole light and wall packs retrofit (Complete / 70% energy reduction on those lights)
 - LED Interior bulb replacement (Casino floor & Hotel Rooms complete / 70% reduction on those lights)
- LED/Energy Efficient - Lighting casino and tribal offices (exterior and interior)
- LED - Gas Station/Smoke shop LED retrofit (Contract signed)
- LED – Workshop lighting retrofit – Created photometric's for the building
- Casino Thermal – Hotel and indoor pool (Propane usage offset)
- GYM Thermal – Indoor pool heating (Propane usage offset)
- More Reservation Facilities Photovoltaics – ???



Department of Energy Renewable En
Grant Program

