



KOP U2-02. Existing unobstructed view toward the representative ROW from a future residential development, taken from a newly constructed roadway.

FIGURE B-52
KOP U2-02. View from Future City of
Benson Residential Development
Southline Transmission Project



A. KOP U2-03. Existing view toward the representative ROW from the community of Mescal along North Mescal Road.



B. KOP U2-03. Simulated view toward the representative ROW from the community of Mescal along North Mescal Road.

FIGURE B-53
KOP U2-03. View from Community of Mescal
Southline Transmission Project



KOP U2-04. Existing view toward the representative ROW line within the community of Mescal.



A. KOP H-01. Existing view toward the representative ROW from a residential area in the community of Pomerene along North Cascabel Road.



B. KOP H-01. Simulated view toward the representative ROW from a residential area in the community of Pomerene along North Cascabel Road.

FIGURE B-55
KOP H-01. View from Community of Pomerene
Southline Transmission Project



KOP H-02. Existing view toward the representative ROW from a rural residential area north of Mescal.



KOP H-03. Existing view toward the representative ROW within the community of Mescal.



KOP U3-03. Existing view toward the representative ROW crossing of Scenic Highway 83.

FIGURE B-58
KOP U3-03. View from Highway 83
Southline Transmission Project



A. KOP U3-04. Existing view toward the representative ROW from New Tucson area near south Sonoita Ranch Circle residential area.



B. KOP U3-04. Simulated view toward the representative ROW from New Tucson area near south Sonoita Ranch Circle residential area.

FIGURE B-59
KOP U3-04. View from Sonoita Ranch
Southline Transmission Project



KOP U3-05. Existing view toward the representative ROW from the southwest corner of the Pima County Fairground complex.



A. KOP U3-06. Existing view toward the representative ROW from a residential area near the intersection of East Old Vail Highway and South Broken Cactus Way.



B. KOP U3-06. Simulated view toward the representative ROW from a residential area near the intersection of East Old Vail Highway and South Broken Cactus Way.

FIGURE B-61
KOP U3-06. View from East Old Vail Highway
Southline Transmission Project



KOP U3-07. Existing view toward the representative ROW from tribal land near San Xavier Mission.



KOP U3-08. Existing view toward the representative ROW from Santa Cruz River Bikeway East River Trail system.



KOP U3-09. Existing view toward the representative ROW from a residential area along South Newcastle Court.



A. KOP U3-10. Existing view toward the representative ROW from an outdoor amphitheatre within Kennedy Park Fiesta Area, a Tucson City park.



B. KOP U3-10. Simulated view toward the representative ROW from an outdoor amphitheatre within Kennedy Park Fiesta Area, a Tucson City park.

FIGURE B-65
KOP U3-10. View from Kennedy Park Fiesta Area
Southline Transmission Project



A. KOP U3-11. Existing view toward the representative ROW from Explorers Trail within Tucson Mountain Park, Pima County.



B. KOP U3-11. Simulated view toward the representative ROW from Explorers Trail within Tucson Mountain Park, Pima County.

FIGURE B-66
KOP U3-11. View from Explorers Trail
Southline Transmission Project



KOP U3-12. Existing view toward the representative ROW from Sentinel Peak Observation Area, a Tucson City park.

FIGURE B-67
KOP U3-12. View from Sentinel Peak Observation Area
Southline Transmission Project



A. KOP U3-13. Existing view toward the representative ROW from Tumamoc Hill Road.



B. KOP U3-13. Simulated view toward the representative ROW from Tumamoc Hill Road.

FIGURE B-68
KOP U3-13. View from Tumamoc Hill Road
Southline Transmission Project
CH2MHILL



KOP U3-15. Existing view toward the representative ROW from the river crossing along the trail near Juhan Park, a Tucson City park.



KOP U3-16. Existing view toward the representative ROW from Silverbell Golf Course, a Tucson City public golf course.



A. KOP U3-17. Existing view toward the representative ROW from Christopher Columbus Park, a Tucson City park.



B. KOP U3-17. Simulated view toward the representative ROW from Christopher Columbus Park, a Tucson City park.

FIGURE B-72
KOP U3-17. View from Silverbell Lake
Southline Transmission Project



KOP U3-19. Existing view toward the representative ROW from West Picture Rocks Road, located at entry to Saguaro National Park.



KOP U3-20. Existing view toward the representative ROW from a residential area near the community of Marana.

FIGURE B-75
KOP U3-20. View from Wade Road
Southline Transmission Project



KOP U3-21. Existing view toward the representative ROW looking through a mixed commercial and residential area, southeast of Rattlesnake Ridge.

FIGURE B-76
KOP U3-21. View from North Silverbell Road
Southeast of Rattlesnake Ridge
Southline Transmission Project



A. KOP U3-22. Existing sensitive view toward the representative ROW along West Twin Peaks Road, northwest of Rattlesnake Ridge.



B. KOP U3-22. Simulated sensitive view toward the representative ROW along West Twin Peaks Road, northwest of Rattlesnake Ridge.

FIGURE B-77
KOP U3-22. View from West Twin Peaks Road
Southline Transmission Project





A. KOP U3-23. Existing view toward the representative ROW from a rural residential area along Silverbell Road historic auto route.



B. KOP U3-23. Simulated view toward the representative ROW from a rural residential area along Silverbell Road historic auto route.

FIGURE B-78
KOP U3-23. View from Silverbell Road
Historic Auto Route
Southline Transmission Project



KOP U3-24. Existing view toward the representative ROW from Red Rock residential area in Pima County.

FIGURE B-79
KOP U3-24. View from Red Rock
Southline Transmission Project



A. KOP **NPS-02**. Existing view toward the representative ROW (Segment TH3b) from the bike trail just east of the river bed and west of Interstate 10.



B. KOP **NPS-02**. Simulated view toward the representative ROW from (Segment TH3b) the bike trail just east of the river bed and west of Interstate 10.

FIGURE B-91
KOP NPS-02. View from bike trial just east of
 river bed and west of Interstate 10
Southline Transmission Project



A. KOP AN-04. Existing view toward the representative ROW (Segment U3i) from Christopher Columbus Park.



B. KOP AN-04. Simulated view toward the representative ROW (Segment U3i) from Christopher Columbus Park.

FIGURE B-84
KOP AN-04. View from Christopher Columbus Park
Southline Transmission Project



A. KOP AN-12. Existing view toward the representative ROW (Segment U3k) from North Aguirre Road west of Pinal Airpark along a portion of a planned recreational trail.



B. KOP AN-12. Simulated view toward the representative ROW (Segment U3k) from North Aguirre Road west of Pinal Airpark along a portion of a planned recreational trail.

FIGURE B-88
KOP AN-12. View from North Aguirre Road west of
Pinal Airpark
Southline Transmission Project



A. KOP MA-02. Existing view toward the representative ROW (Segment U3) from the intersection of Sanders Road and West Avra Valley Road.



B. KOP MA-02. Simulated view toward the representative ROW (Segment U3) from the intersection of Sanders Road and West Avra Valley Road.

FIGURE B-87
KOP MA-02. View from the intersection of Sanders
Road and West Avra Valley Road
Southline Transmission Project



A. KOP MA-03. Existing view toward the representative ROW (Segment U3i) from the Marana Airport entrance located at West Avra Valley Road.



B. KOP MA-03. Simulated view toward the representative ROW (Segment U3i) from the Marana Airport entrance located at West Avra Valley Road.

FIGURE B-89
KOP MA-03. View from Marana Airport entrance
Southline Transmission Project



A. KOP SA-01. Existing view toward the representative ROW (Segment U3i) from the western portion of Saguaro National Park.



B. KOP SA-01. Simulated view toward the representative ROW (Segment U3i) from the western portion of Saguaro National Park.

FIGURE B-90
KOP SA-01. View from Saguaro National Park
Southline Transmission Project



A. KOP TH1-02. Existing view toward the representative ROW from the trail extending off of the parking area formed by Sentinel Peak Road S. looking west.



B. KOP TH1-02. Simulated view toward the representative ROW from the trail extending off of the parking area formed by Sentinel Peak Road S. looking west.
Segment U3d is visible south of Starr Pass Boulevard. Segment TH1a is visible north of and along Starr Pass Boulevard.

FIGURE B-83
KOP TH1-02. View from trail located off of South Sentinel Peak Road looking west
Southline Transmission Project



A. KOP TH1-S1. Existing view facing north toward the representative ROW (Segment U3e) from West Starr Pass Boulevard between South Coati Drive and South Bison Drive.



B. KOP TH1-S1. Simulated view facing north toward the representative ROW (Segment U3e) from West Starr Pass Boulevard between South Coati Drive and South Bison Drive.

FIGURE B-80
KOP TH1-S1. View from West Starr Pass Boulevard
between South Coati Drive and South Bison Drive
Southline Transmission Project



A. KOP TH1-S3. Existing view facing east toward the representative ROW from West Starr Pass Boulevard near Park W Lane.



B. KOP TH1-S3. Simulated view facing east toward the representative ROW from West Starr Pass Boulevard near Park W Lane. Segment TH1a is visible north of and along Starr Pass Boulevard. Segment U3d is visible south of Starr Pass Boulevard.

FIGURE B-81
KOP TH1-S3. View from West Starr Pass Boulevard
near Park W Lane
Southline Transmission Project



A. KOP TH1-S6. Existing view facing north toward the representative ROW (Segment TH1a) from North Greasewood Boulevard at West Broadway.



B. KOP TH1-S6. Simulated view facing north toward the representative ROW (Segment TH1a) from North Greasewood Boulevard at West Broadway.

FIGURE B-82
KOP TH1-S6. View from North Greasewood Boulevard
at West Broadway
Southline Transmission Project



A. KOP TH3-S1. Existing view toward the representative ROW (Segment TH3b) from South Sentinel Peak Road looking east.



B. KOP TH3-S1. Simulated view toward the representative ROW (Segment TH3b) from South Sentinel Peak Road looking east.

FIGURE B-86
KOP TH3-S1. View from South Sentinel Peak Road
looking east
Southline Transmission Project



A. KOP U3-18. Existing view toward the representative ROW (Segment U3i) from Juan Bautista de Anza National Historic Trail along North Silverbell Road near North Abington Road.



B. KOP U3-18. Simulated view toward the representative ROW (Segment U3i) from Juan Bautista de Anza National Historic Trail along North Silverbell Road near North Abington Road.

FIGURE B-85
KOP U3-18. View from Juan Bautista de Anza
National Historic Trail
Southline Transmission Project



A. KOP TH1-03. Existing view from Sentinel Peak at Tumamoc Hill oriented towards Local Alternatives TH1b and TH1c in the Upgrade Section.

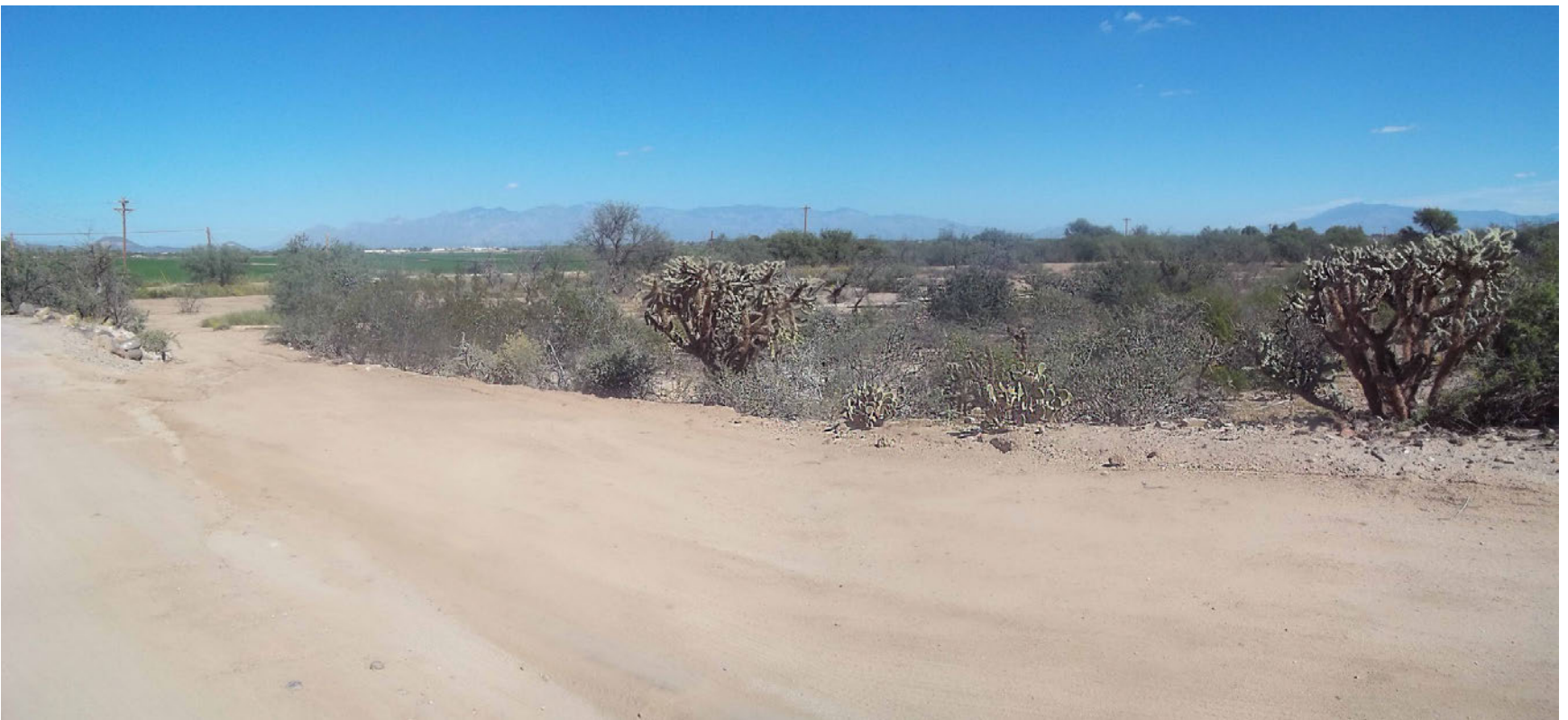


B. KOP TH1-03. Simulated view from Sentinel Peak at Tumamoc Hill oriented towards Local Alternatives TH1b and TH1c in the Upgrade Section.

Figure B-92.
KOP TH1-03. View from Sentinel Peak at Tumamoc Hill.
Southline Transmission Project



A. KOP U3-07a. Existing view from San Xavier Mission oriented toward subroute U3a in the Upgrade Section.



B. KOP U3-07a. Simulated view from San Xavier Mission oriented toward subroute U3a in the Upgrade Section.

Figure B-93.
KOP U3-07a. View from San Xavier Mission
on the Tohono O'odham Nation
Southline Transmission Project



KOP TH1-S2. Existing view along West Starr Pass Boulevard toward representative ROW for local alternative TH1a, which would be visible with Tumamoc Hill in the background.



KOP TH1-S4. Existing view along Greasewood Road just south of the Tolson Elementary School, providing view of local alternative that would run along Greasewood Road to avoid the Tumamoc Hill area.

Figure B-94.
KOP TH1. Views from West Star Pass
Boulevard and Greasewood Road.
Southline Transmission Project



KOP TH1-S5. Existing view from residential area (West Calle Tonalá) just west of Greasewood Road toward Tumamoc Hill and the local alternative that would avoid Tumamoc Hill.

Figure B-95.
KOP TH1. View from West Calle Tonalá
Southline Transmission Project



KOP TH1-S7. Existing view toward the representative ROW from Greasewood Road and Speedway Boulevard.

Figure B-96.
KOP TH1-S7. View from Greasewood Road.
Southline Transmission Project



KOP TH1-S8. Existing view toward the representative ROW from Speedway Boulevard.

Figure B-97.
KOP TH1-S8. View from Speedway Boulevard.
Southline Transmission Project



KOP TH1-S9. Existing view toward the representative ROW from North El Rio Drive near El Rio Golf Course, a Tucson City public golf course.

Figure B-98.
KOP TH1-S9. View from North El Rio Drive.
Southline Transmission Project



KOP TH1-S10. Existing view toward the representative ROW from West Miracle Mile and I-10.

Figure B-99.
KOP TH1-S10. View south towards Grant Road from West Miracle Mile.
Southline Transmission Project



KOP TH3-R1. Existing view toward the representative ROW from the Loop on the Santa Cruz River Bikeway.

Figure B-100.
KOP TH3-R1. View from the Santa Cruz River.
Southline Transmission Project



KOP TH3-R2. Existing view toward the representative ROW from the Loop on the Santa Cruz River Bikeway.

Figure B-101.
KOP TH3-R2. View from West St. Mary's Road.
Southline Transmission Project



KOP TH3-R3. Existing view toward the representative ROW from the Garden of Gethsemane, a Tucson City park.

Figure B-102.
KOP TH3-R3. View from Garden of Gethsemane along Loop bikeway.
Southline Transmission Project



KOP TH3-R4. Existing view toward the representative ROW from the Loop on the Santa Cruz River Bikeway.

Figure B-103.
KOP TH3-R4. View from the Santa Cruz River.
Southline Transmission Project



A. KOP WB-01. Existing view toward route variation P7a from the grounds of the Zarpara Winery Tasting Room



B. KOP WB-01. Simulated view toward route variation P7a from the grounds of the Zarpara Winery Tasting Room

Figure B-104.
KOP WB-01. View from the Zarpara Winery Tasting Room
Southline Transmission Project



A. KOP WB-02. Existing view toward route variation P7a from grounds of the Pillsbury Winery Tasting Room



B. KOP WB-02. Simulated view toward route variation P7a from grounds of the Pillsbury Winery Tasting Room

Figure B-105.
KOP WB-02. View from the Pillsbury Winery Tasting Room
Southline Transmission Project



A. KOP WB-02. Existing view toward route variation P7a from the backyard of the privately owned Narita Property



B. KOP WB-02. Simulated view toward route variation P7a from the backyard of the privately owned Narita Property

Figure B-106.
KOP WB-03. View from the privately owned Narita Property
Southline Transmission Project



KOP AN-03. Existing view looking north-northwest along the Loop on the Santa Cruz River Bikeway/Anza Trail.

Figure B-107.
KOP AN-03. View from the Santa Cruz River Bikeway/Anza Trail.
Southline Transmission Project