



18 Aug 2015

Newfield Exploration, Bakken Petroleum System, North Dakota

Overview of NETL Field Studies Related to Oil and Gas Production

DOE Tribal Leaders Forum
Denver, Colorado



the **ENERGY** lab

Richard Hammack, Monitoring Team Lead

USDOE National Energy Technology Laboratory, Pittsburgh, PA

Program Objectives

- **Reduce Environmental Impacts**
- **Demonstrate Safe/Reliable Operations**
- **Improve Efficiency of Hydraulic Fracturing**



Monitoring of Oil and Gas Operations

- **Surface Monitoring**
 - Ambient Air Quality
 - Air Emissions
 - Ground Motion
 - Surface Water
- **Near-Surface Monitoring**
 - Spills and Leaks
 - Well-Bore Integrity
 - Abandoned Wells
- **Sub-Surface Monitoring**
 - Fracture Growth
 - Fluid/Gas Migration



Surface Monitoring- Air Quality

Ambient Air Monitoring Laboratory

Measures air contaminants relevant to oil and gas exploration and production

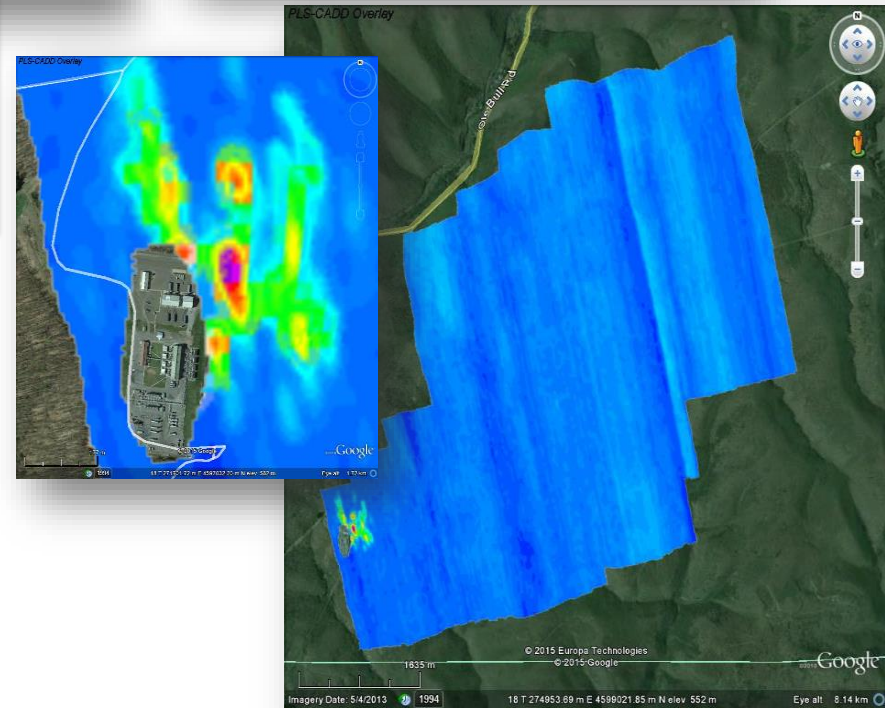
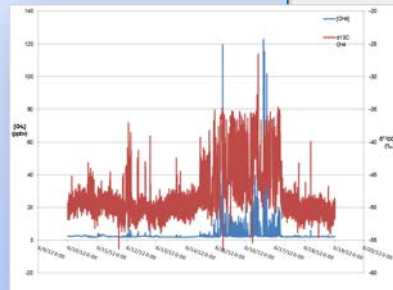
- VOC's
- CH₄ and CO₂ w/isotope speciation
- Ozone
- NO_x (NO, NO₂ and NO+NO₂)
- Organic/Elemental Carbon in Aerosols
- Ammonia
- Radon
- PM_{2.5} and PM₁₀
- SO₂
- Meteorological station



Surface Monitoring- Air Emissions

Methane Emissions

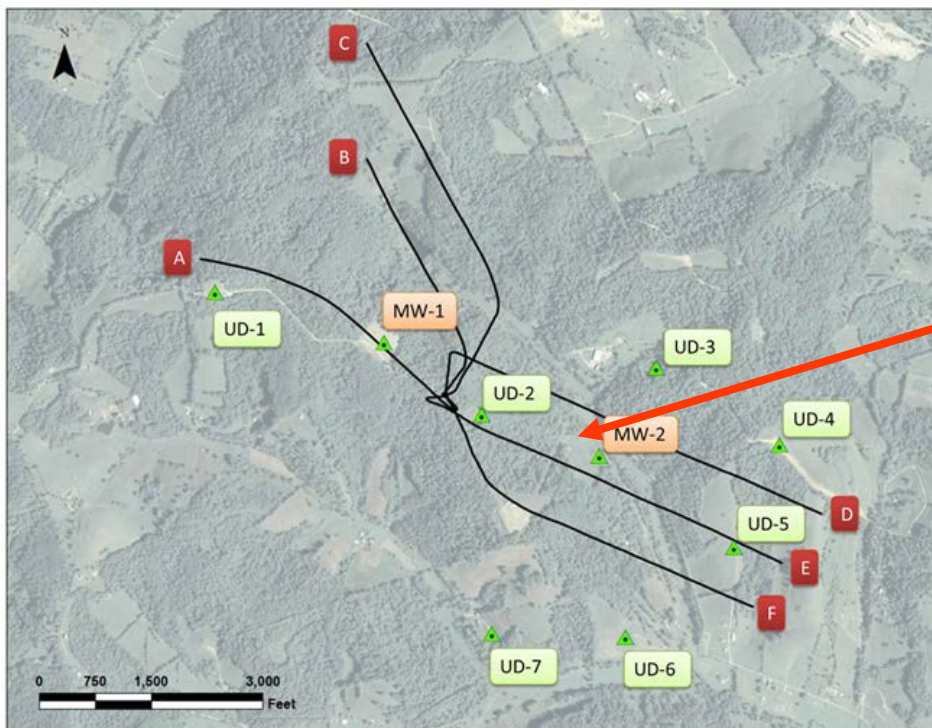
- Unconventional Well Development
 - Drilling
 - Hydraulic Fracturing
 - Flowback
 - Production
- Abandoned Wells
- Compressors
- Pipelines
 - Gathering
 - Transmission



Surface Monitoring- Ground Motion

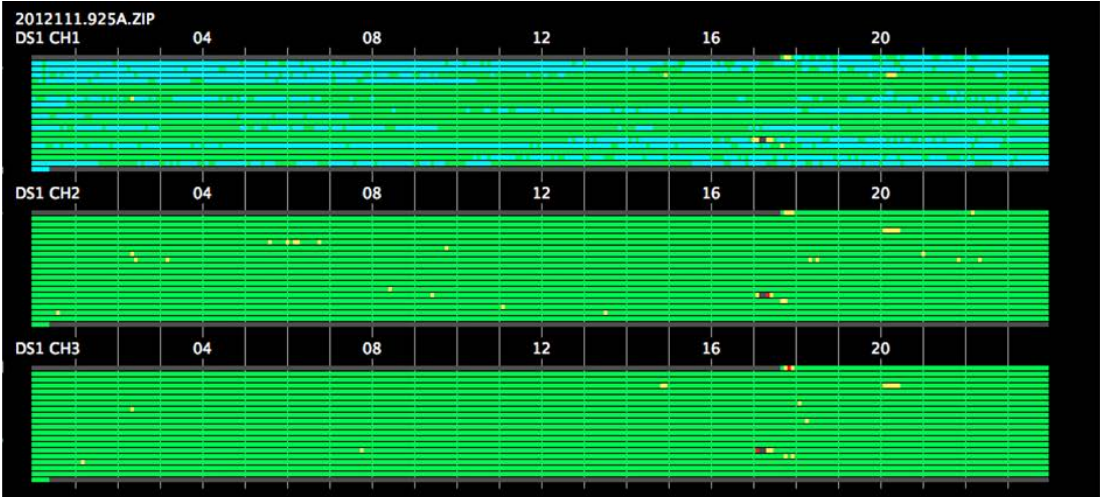
Ground Motion - Hydraulic Fracturing

1. Surface above Marcellus Wells
2. Underground Document Repository

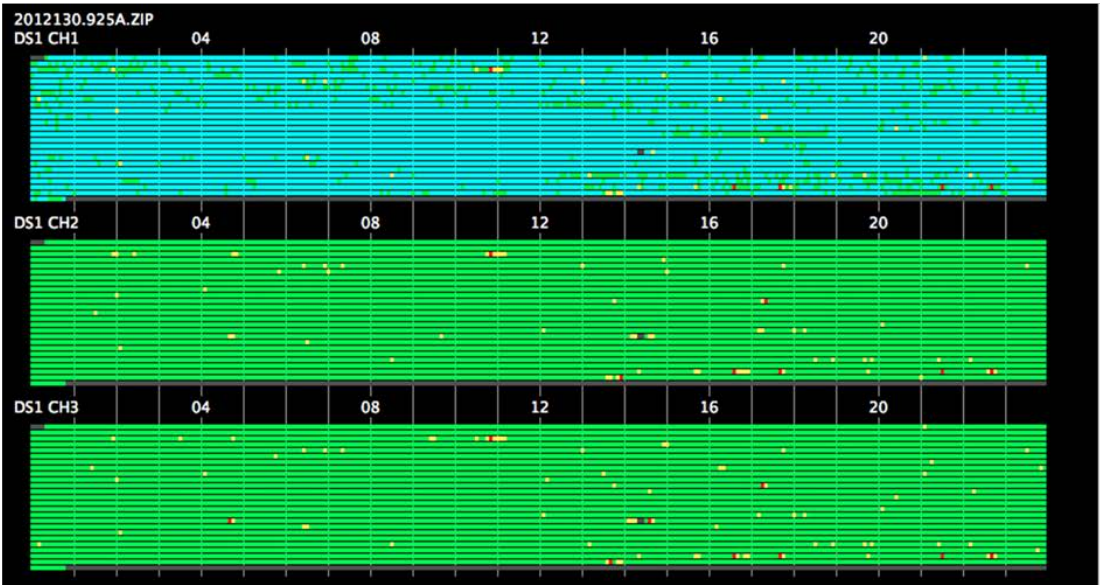


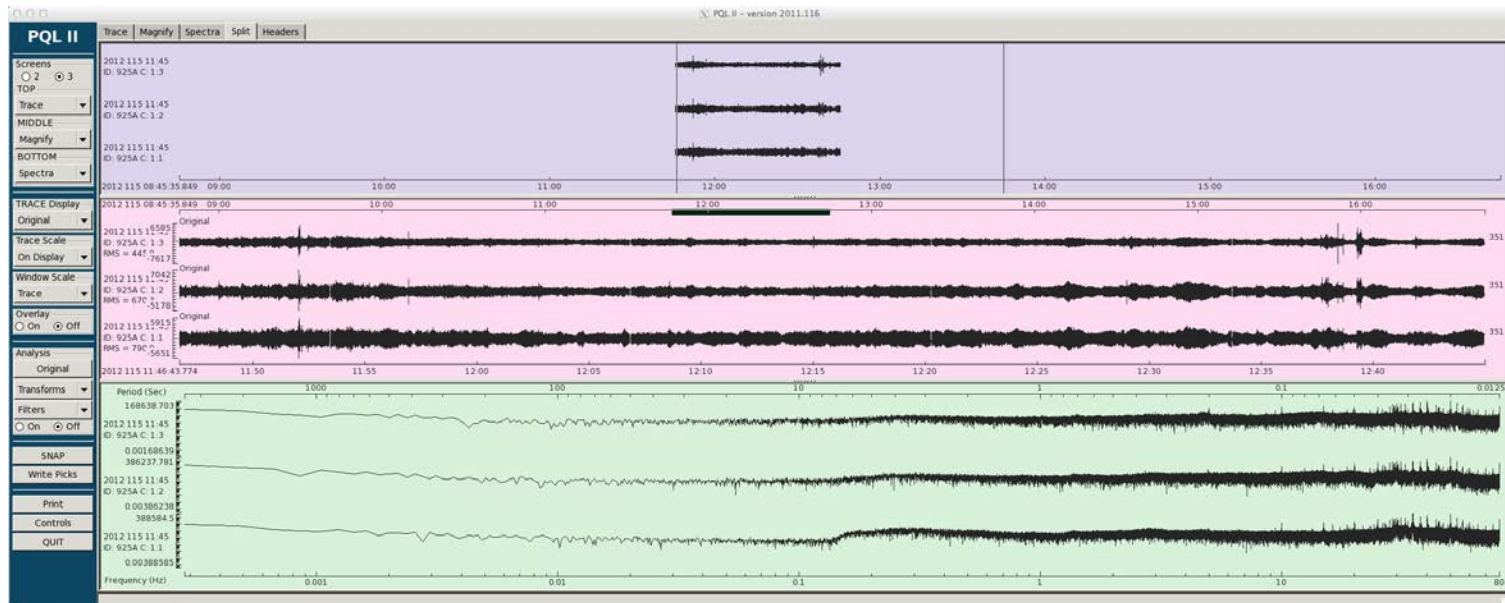
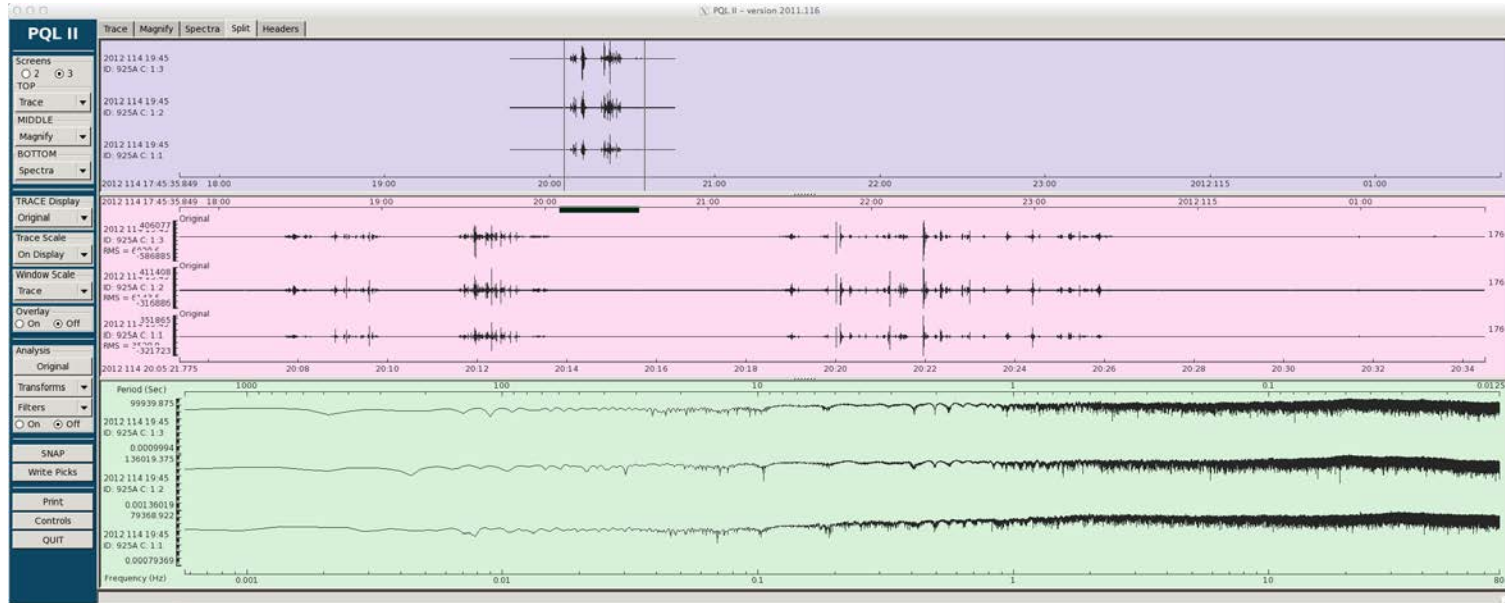
Surface Monitoring- Ground Motion

Background

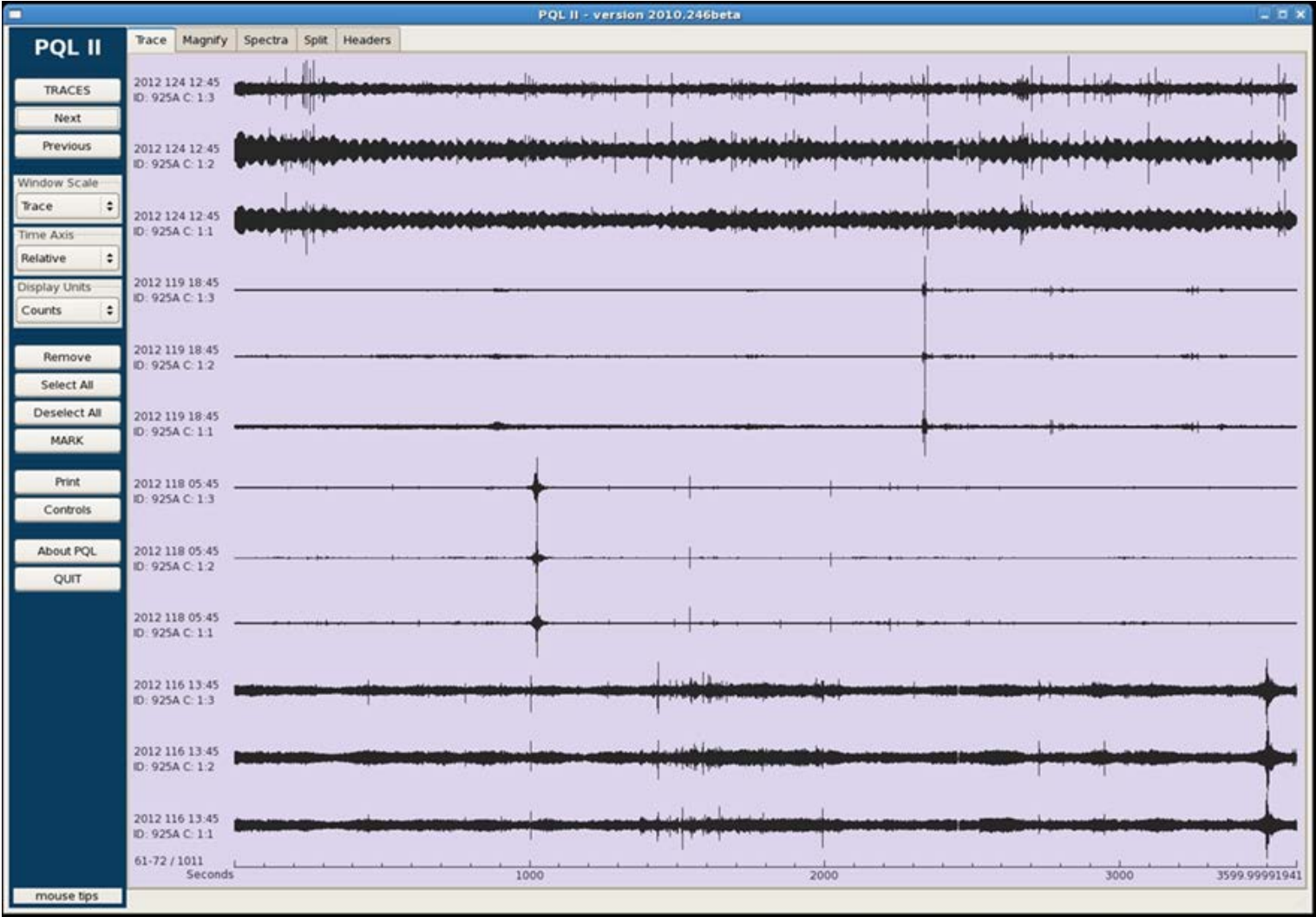


During Frac





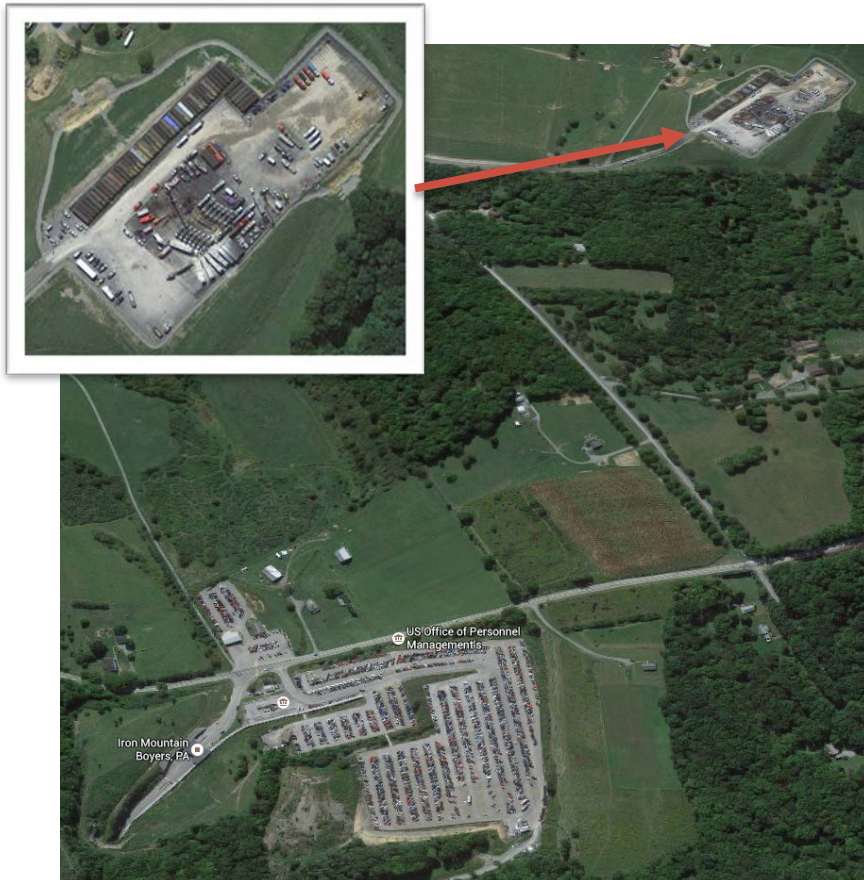
Surface Monitoring- Ground Motion



Surface Monitoring- Ground Motion

Ground Motion - Hydraulic Fracturing

1. Surface above Marcellus Wells
2. **Underground Document Repository**



Observed Events

BHE Vel (m/s)	BHN Vel (m/s)	BHZ Vel (m/s)	Peak Velocity m/s
5.00E-06	2.00E-05	2.00E-06	2.07E-05
3.00E-06	2.00E-06	2.00E-06	4.12E-06
2.00E-06	2.00E-06	2.00E-06	3.46E-06

Guidelines	m/s
Human Sensitivity	2.5E-03
Building Safety	5.0E-01

Surface Monitoring- Water Quality

Surface Water

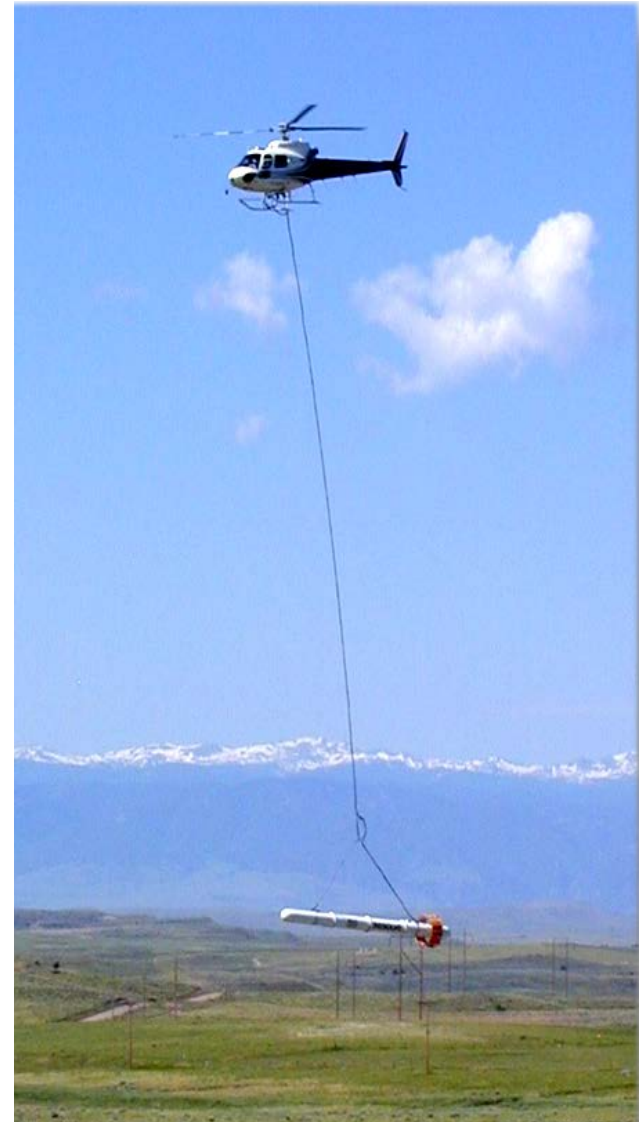
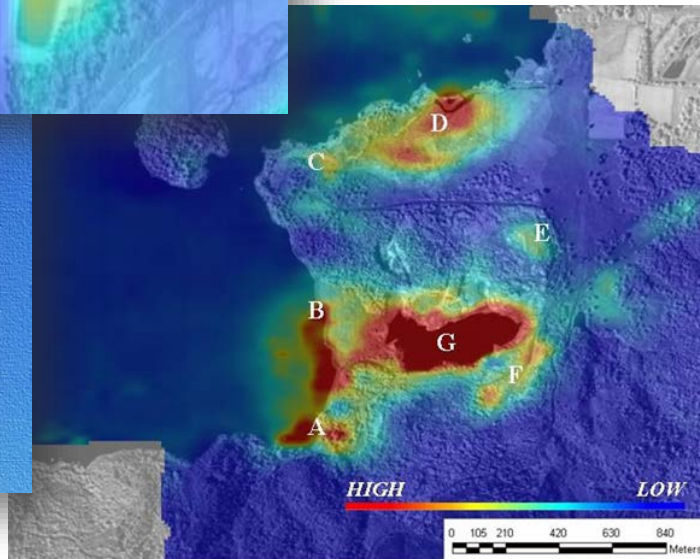
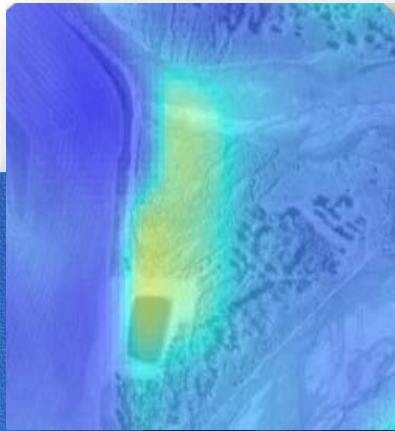
1. Water Quality
2. Water Quantity
3. Erosion and Sedimentation



Near-Surface Monitoring

Spills and Leaks

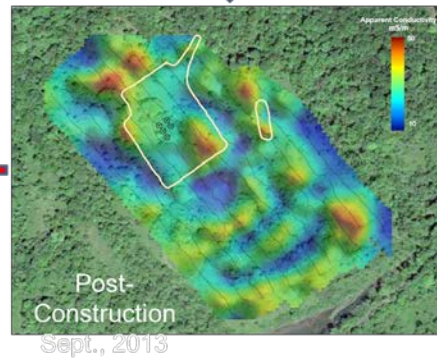
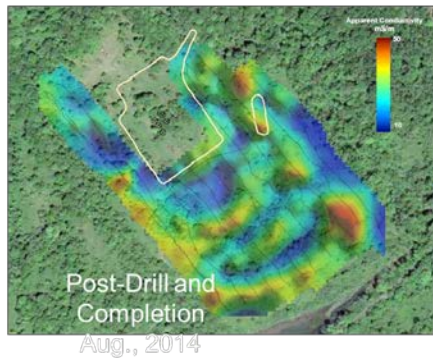
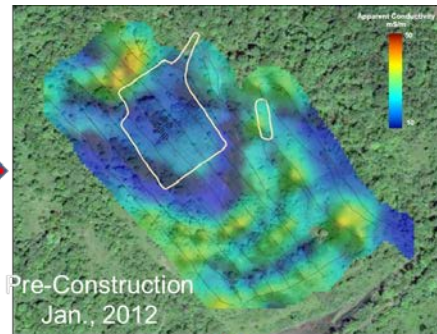
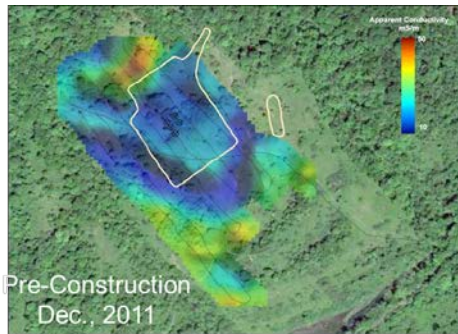
1. Airborne Electromagnetic Surveys
2. Ground Electromagnetic Surveys



Near-Surface Monitoring

Spills and Leaks

1. Airborne Electromagnetic Surveys
2. **Ground Electromagnetic Surveys**
3. Groundwater Monitoring



Near-Surface Monitoring

Spills and Leaks

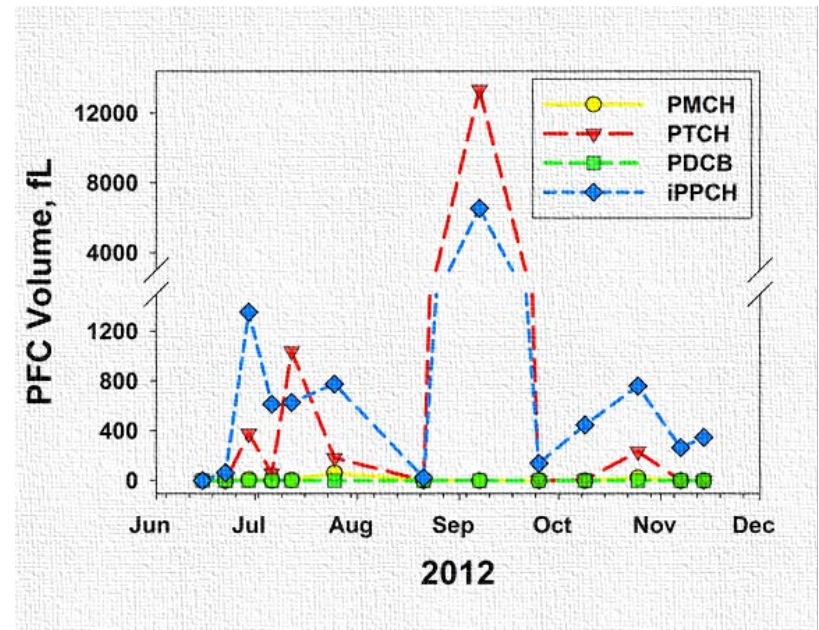
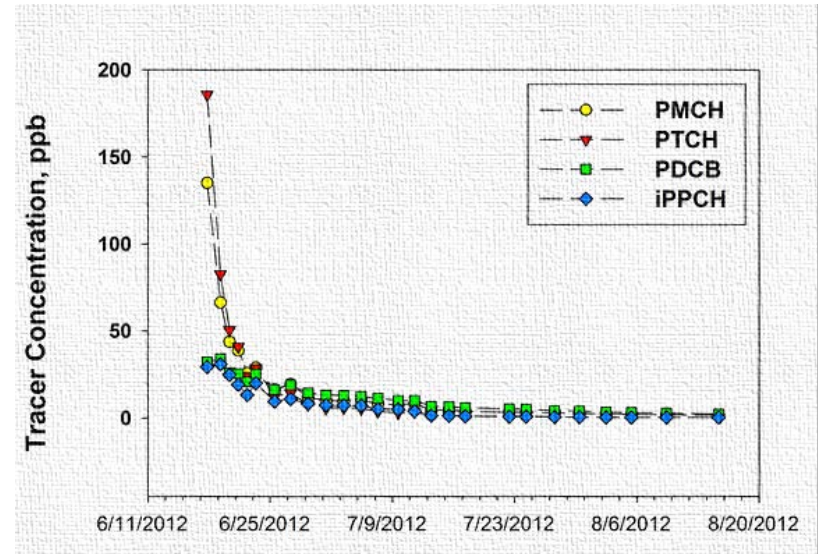
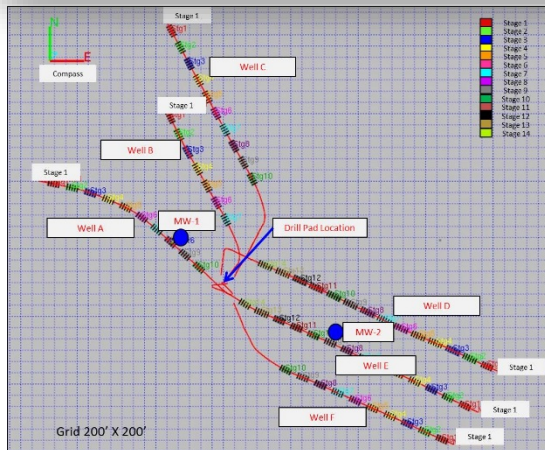
1. Airborne Electromagnetic Surveys
2. Ground Electromagnetic Surveys
3. **Groundwater Monitoring**



Near-Surface Monitoring

Wellbore Integrity

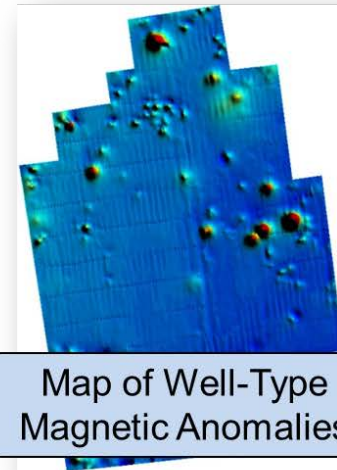
1. Man-Made Tracers



Near-Surface Monitoring

Locating Abandoned Wells

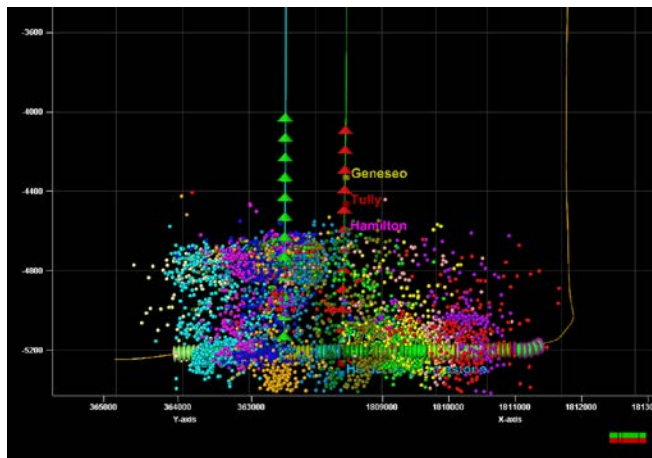
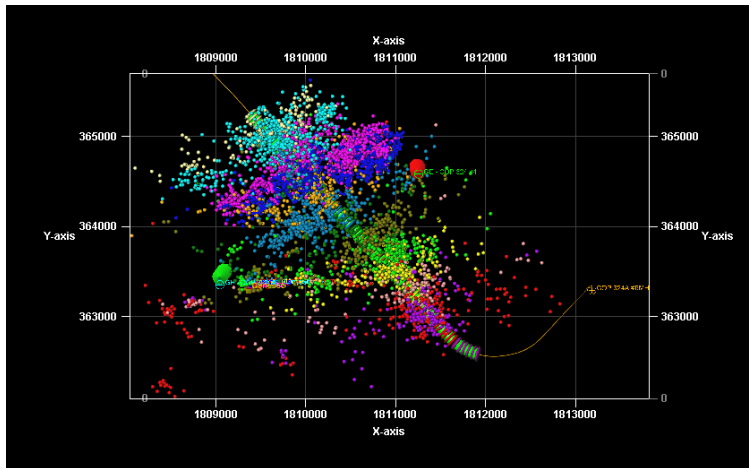
1. Airborne Magnetic Surveys
2. Ground Magnetic Surveys



Sub-Surface Monitoring

Fracture Growth

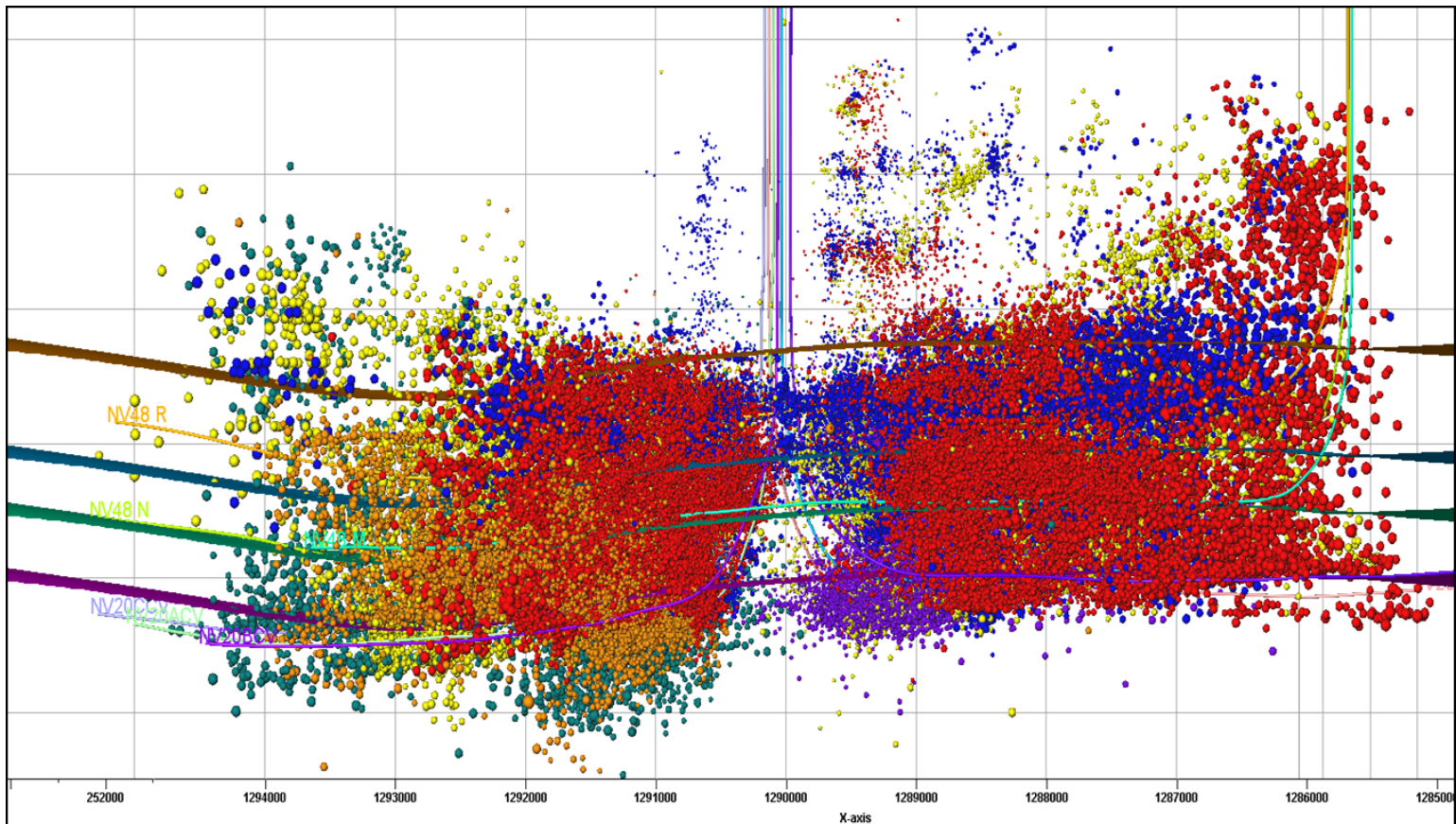
1. Microseismic Monitoring
2. Cross-Well Seismic Tomography



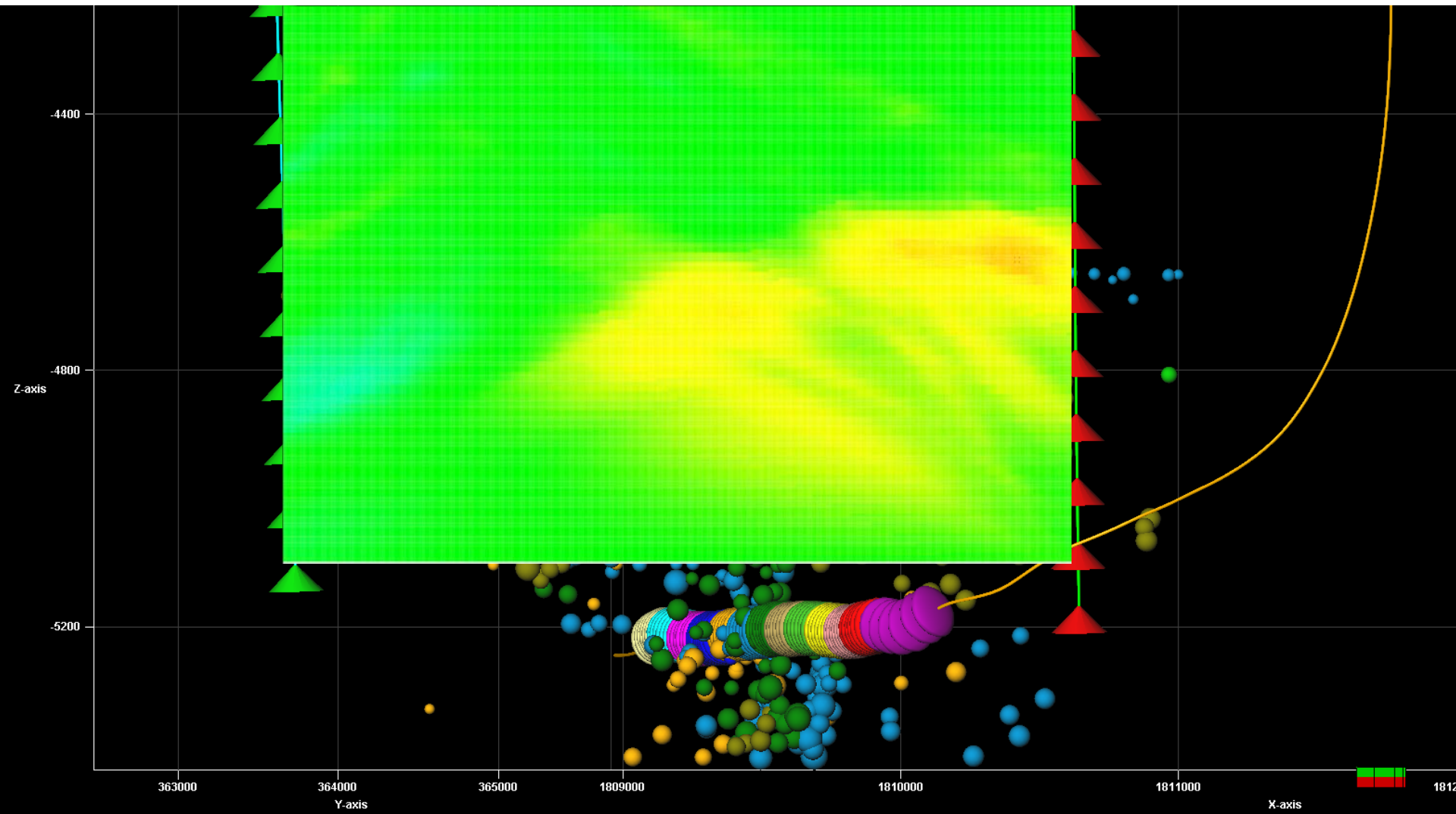
Sub-Surface Monitoring

Fracture Growth

1. Microseismic Monitoring
2. Cross-Well Seismic Tomography



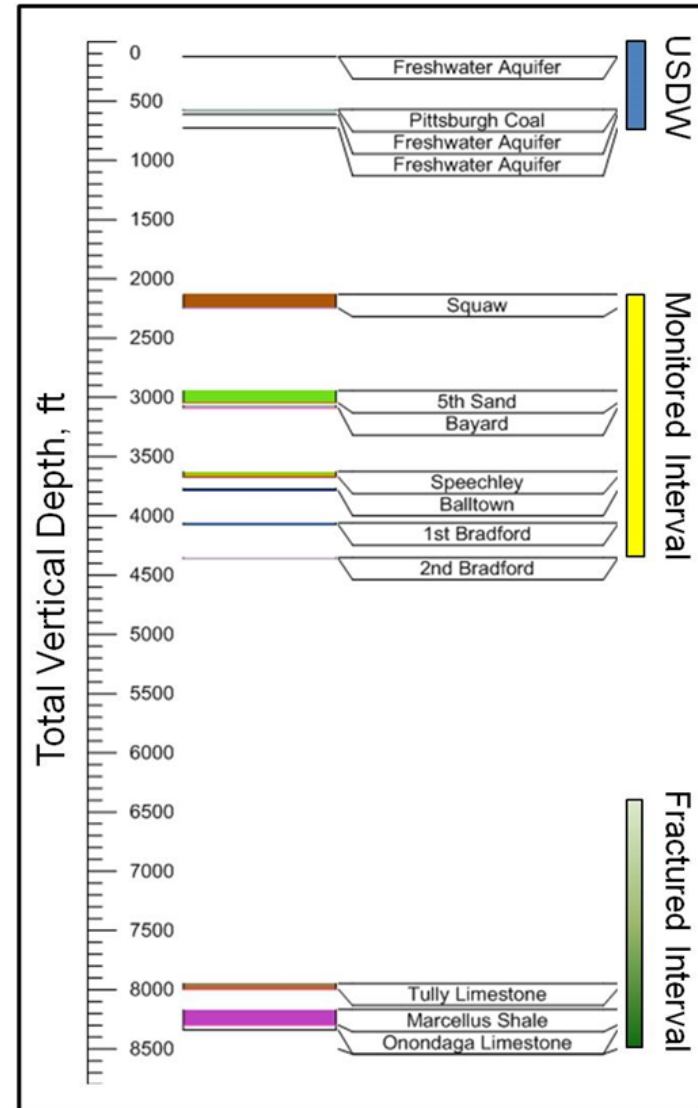
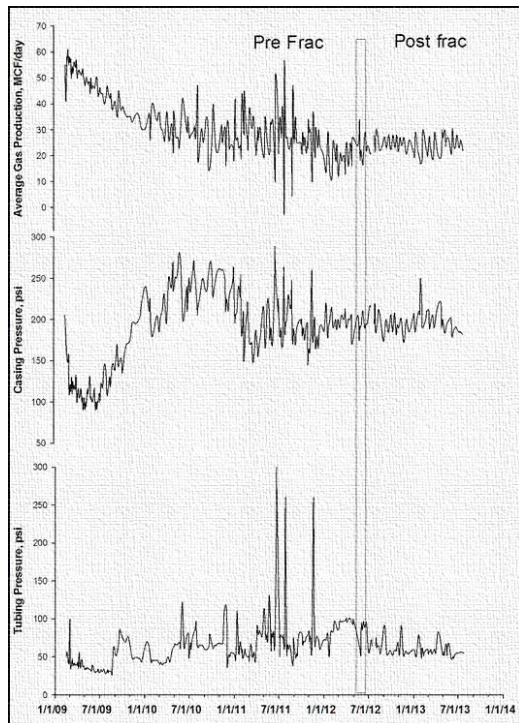
Cross-Well Seismic Tomography



Sub-Surface Monitoring

Fluid/Gas Migration

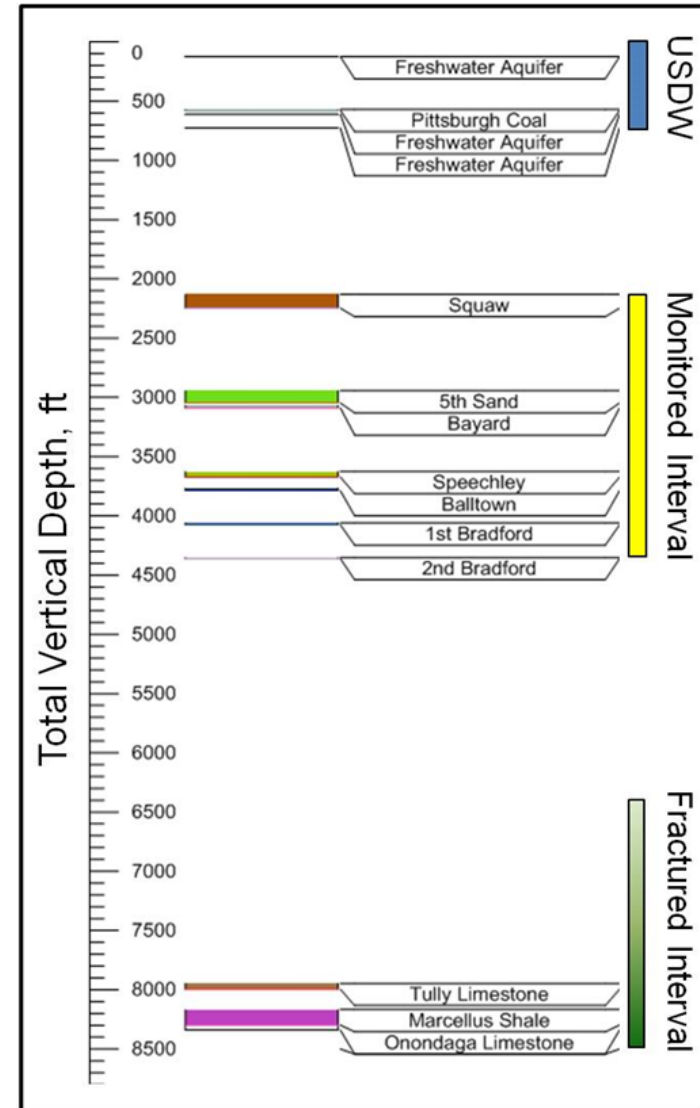
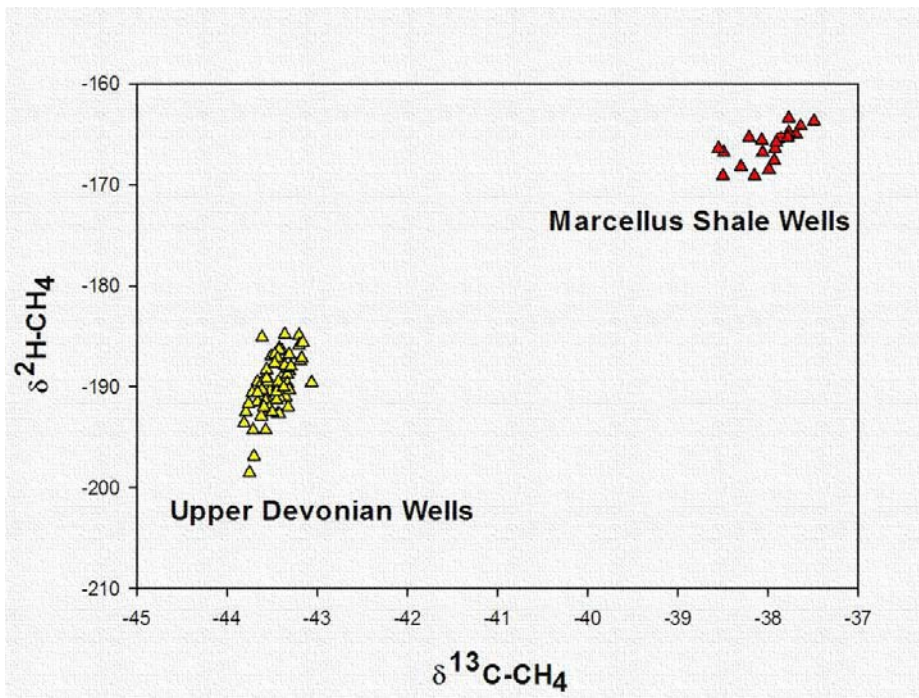
1. Pressure/Production History
2. Natural Gas Isotopes
3. Produced Water Isotopes
4. Man-Made Tracers



Sub-Surface Monitoring

Fluid/Gas Migration

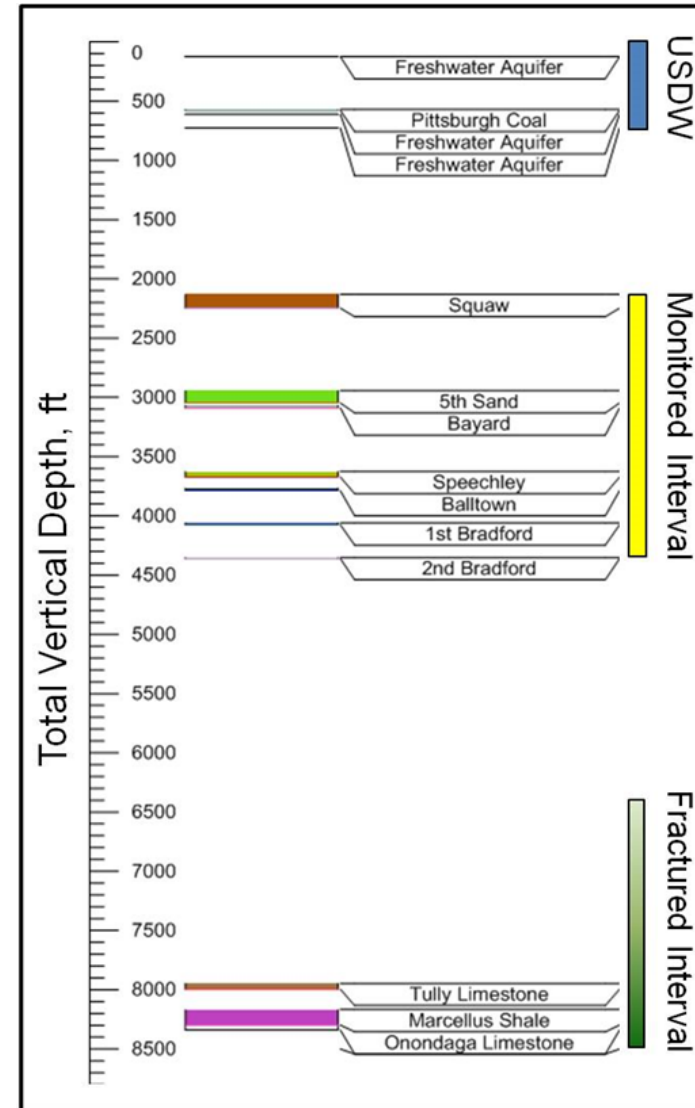
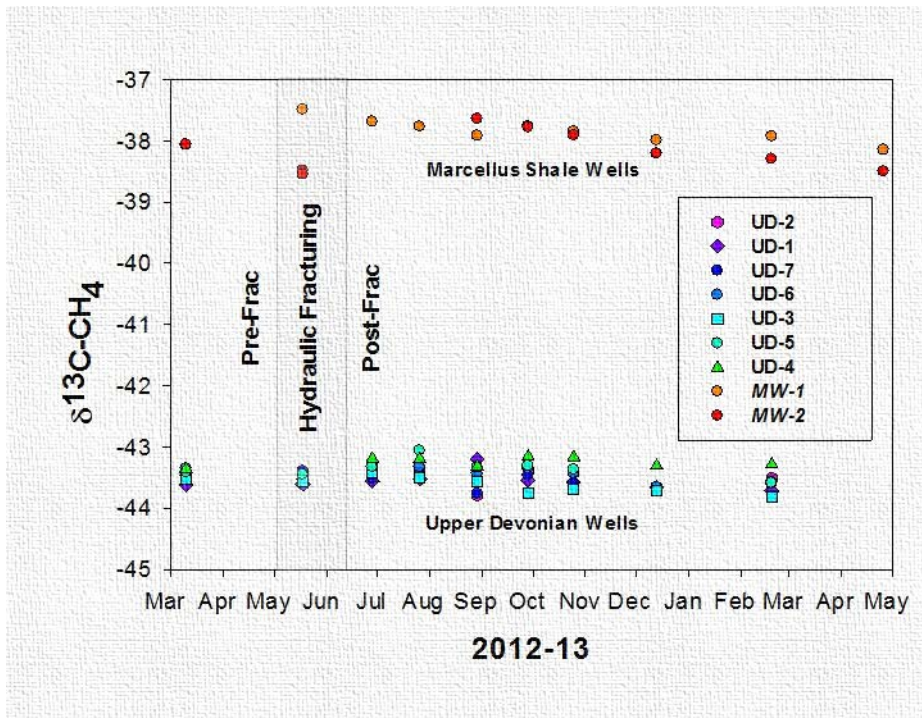
1. Pressure/Production History
2. **Natural Gas Isotopes**
3. Produced Water Isotopes
4. Man-Made Tracers



Sub-Surface Monitoring

Fluid/Gas Migration

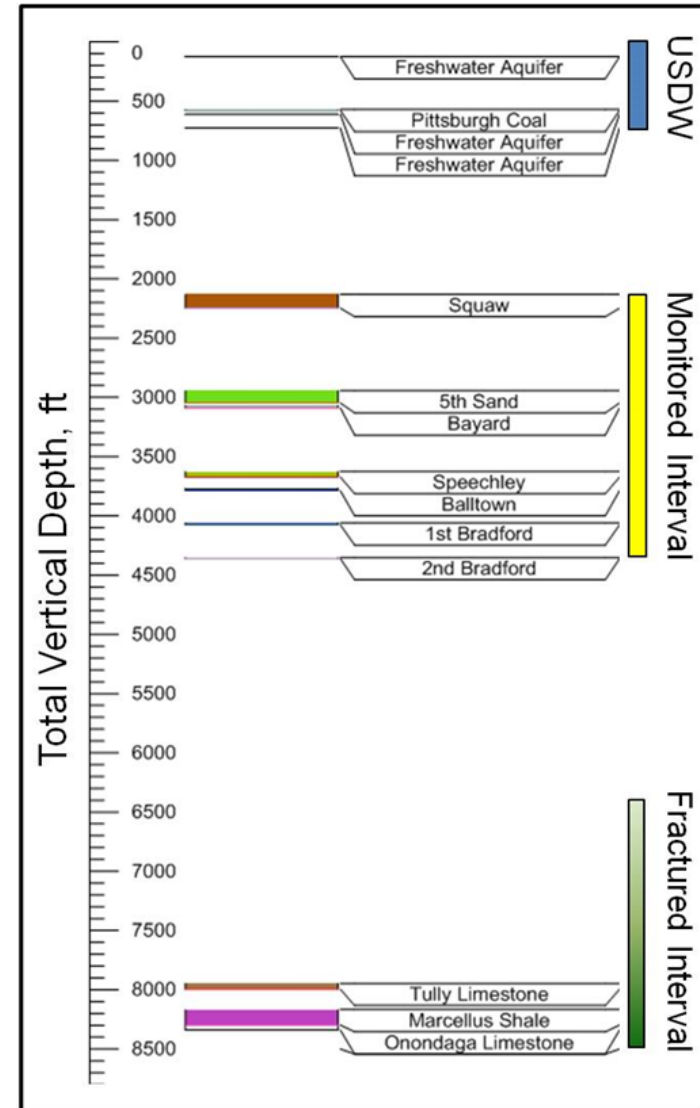
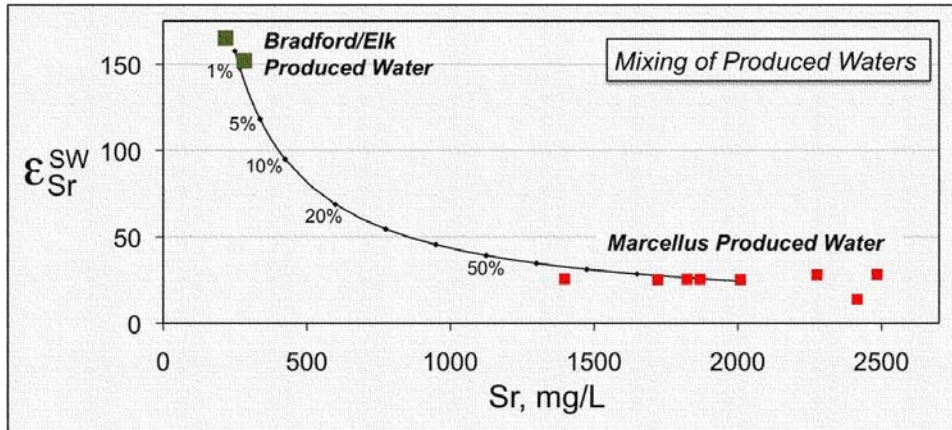
1. Pressure/Production History
2. Natural Gas Isotopes
3. Produced Water Isotopes
4. Man-Made Tracers



Sub-Surface Monitoring

Fluid/Gas Migration

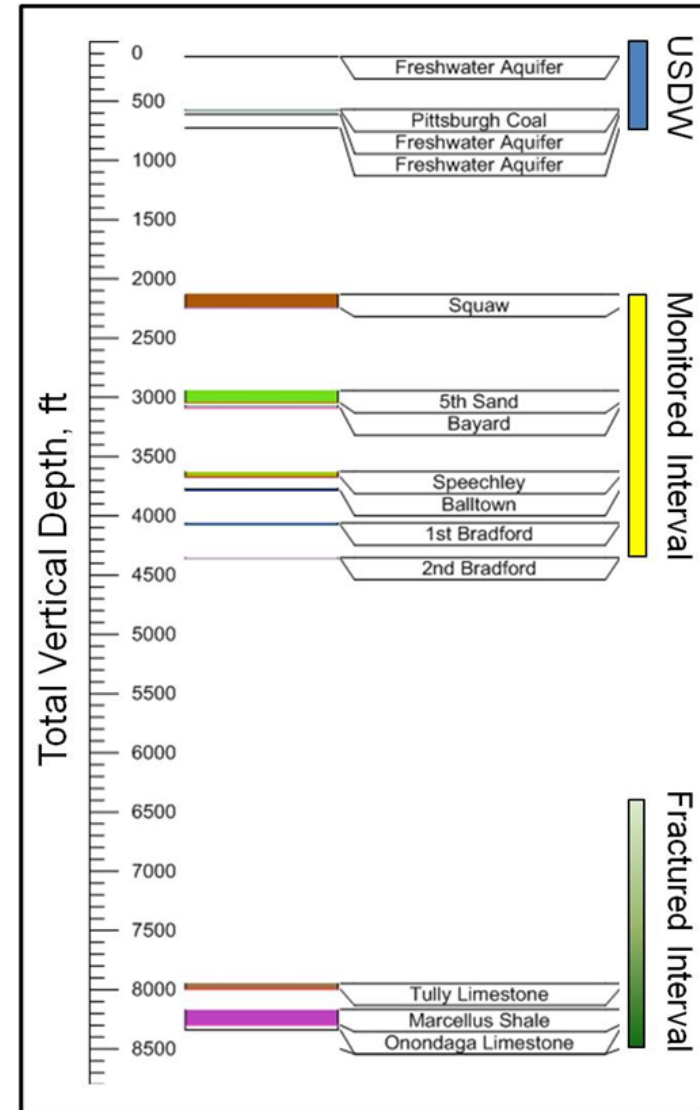
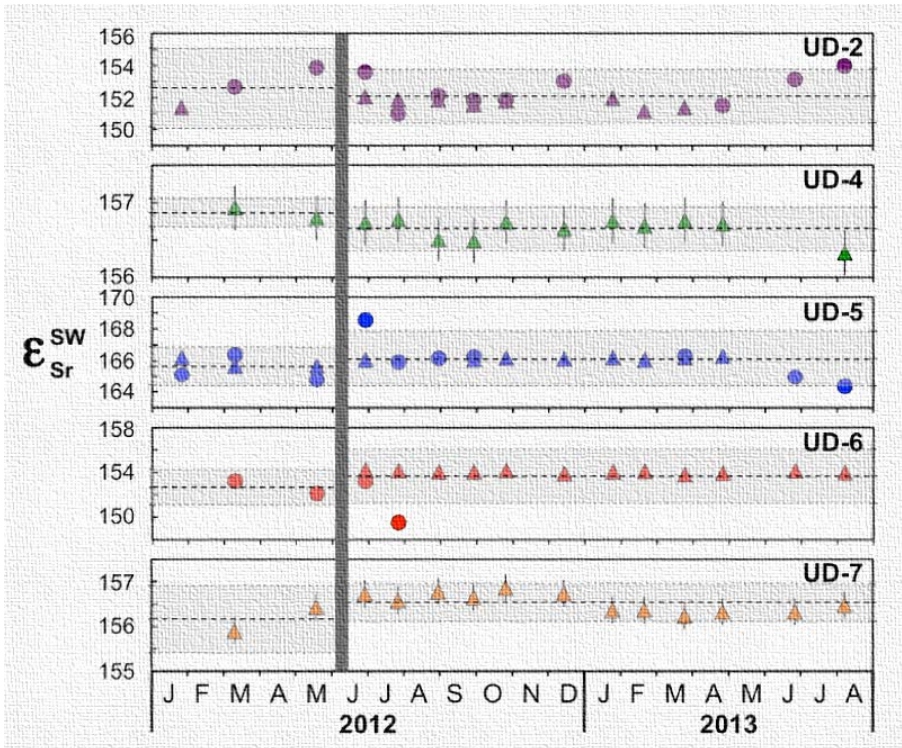
1. Pressure/Production History
2. Natural Gas Isotopes
3. Produced Water Isotopes
4. Man-Made Tracers



Sub-Surface Monitoring

Fluid/Gas Migration

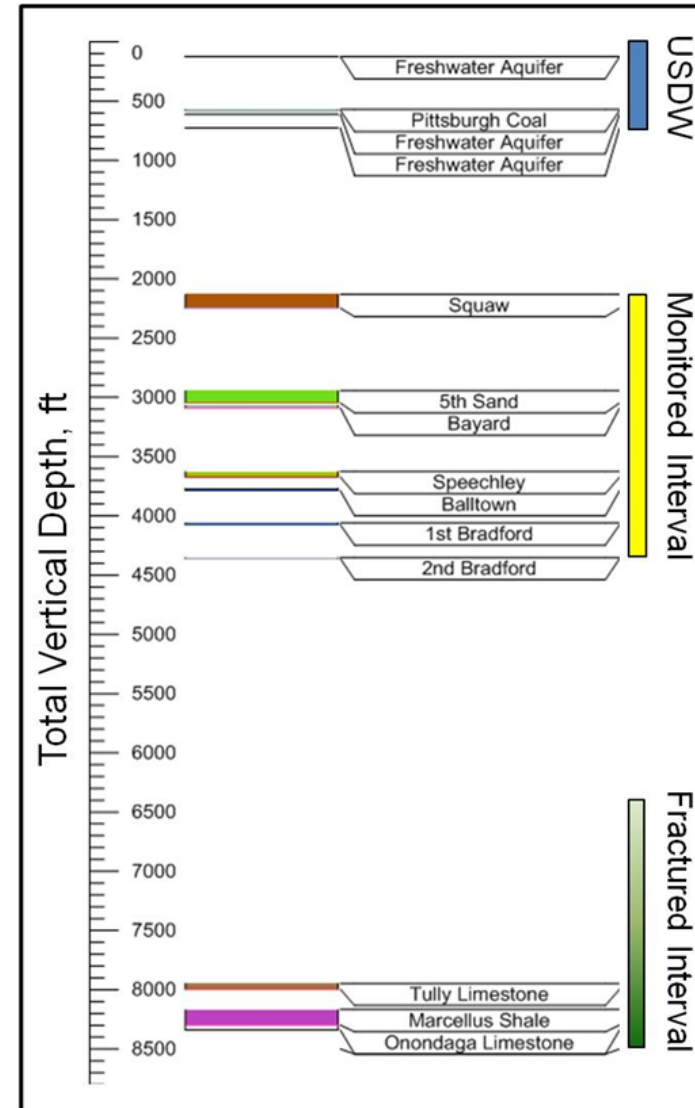
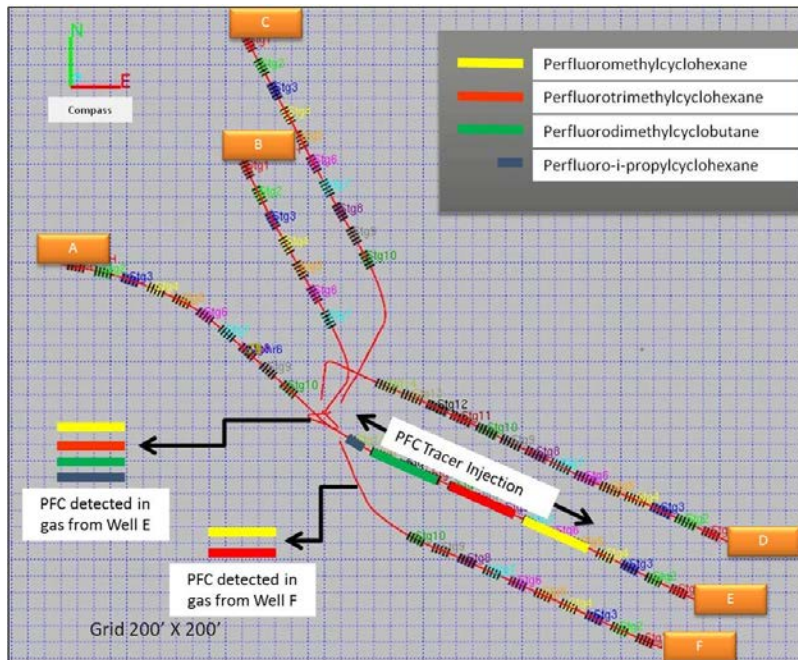
1. Pressure/Production History
2. Natural Gas Isotopes
3. Produced Water Isotopes
4. Man-Made Tracers



Sub-Surface Monitoring

Fluid/Gas Migration

1. Pressure/Production History
2. Natural Gas Isotopes
3. Produced Water Isotopes
4. **Man-Made Tracers**



Richard W. Hammack
*Office of Research and Development
National Energy Technology Laboratory
PO Box 10970
Pittsburgh, PA 15236
Phone: 412 386-6585
Mobile: 412 337-8655
Email: richard.hammack@netl.doe.gov*

