

## **APPENDIX C**

### **CONSULTATION AND COORDINATION WITH THE STATE HISTORIC PRESERVATION OFFICER**



## Department of Energy

Golden Field Office  
1617 Cole Boulevard  
Golden, Colorado 80401-3393

October 10, 2002

Ms. Georgiana Contiguglia  
State Historic Preservation Officer  
Colorado Historical Society  
1300 Broadway  
Denver, CO 80203

Dear Ms. Contiguglia:

**SUBJECT: U.S. DEPARTMENT OF ENERGY SITE-WIDE ENVIRONMENTAL ASSESSMENT OF THE NATIONAL RENEWABLE ENERGY LABORATORY'S SOUTH TABLE MOUNTAIN COMPLEX, DOE/EA-1440**

This letter constitutes a request for concurrence on the determination of affect by the proposed improvements and maintenance activities at the Department of Energy's (DOE's) South Table Mountain (STM) site and the Denver West Office Park (DWOP).

The STM and DWOP sites are located in Jefferson County, Colorado (Figure 1), and can be found on the Morrison, Colorado and Golden Colorado USGS 7.5 minute maps. The STM site is within Township 3 South, Range 70 West, Section 36 and Township 4 South, Range 70 West, Section 1. The DWOP site is within Township 3 South, Range 69 West, Section 31 and Township 4 South, Range 69 West, Section 6.

In compliance with the National Environmental Policy Act (NEPA), a site-wide Environmental Assessment (EA) is in progress for these two locations to ensure the consideration of environmental aspects in site planning activities. The STM site includes a variety of facilities that provide a combined total of 191,787 square feet of space for laboratories, administration, and research support activities and house more than 50 percent of NREL's workers. The DWOP consists of leased office space within buildings No. 15, 16, 17 and 27, and is located east and south of the STM site. The site-wide EA addresses activities at both locations that may occur during future years of operation, including construction, relocating employees and modifying offices and laboratories. Because any changes to the DWOP facilities only involve modifications to leased office space within existing multi-story office buildings, DOE has determined that no historic properties would be affected and no cultural resources survey is necessary for this location. Therefore, this request for concurrence pertains only to the STM site.

The EA's Proposed Action includes new and enhanced capabilities at the STM site to support DOE's mission to research and develop renewable energy technologies. Improvements would include the construction of buildings and equipment, utilities, and other infrastructure. The Proposed Action also includes typical operation and maintenance activities. All improvements would be dependent on the availability of funding.



Four cultural resources surveys have been conducted on the STM facility. Through these surveys, the entire NREL STM property has been surveyed to 100 percent Class III standards. These surveys were conducted by:

- Front Range Research Associates. 1992. Historic Resources Survey Camp George West, Golden, Colorado.
- Butler. 1992. Archaeological Survey of Camp George West and the Works Progress Administration South Table Mountain Basalt Quarries, Jefferson County, Colorado.
- Forum Associates. 1988. Historical Review, Solar Energy Research Institute, Golden, Colorado.
- Nelson. 1980. Historic and Prehistoric Resources, South Table Mountain, Golden, Colorado.

These surveys resulted in the nomination of one historic district (Camp George West) with two contributing features located within the STM site, and two individually eligible historic structures located outside the district, but within the STM site (Table 1). Twenty-five acres of the northernmost part of Camp George West Historic District was recently transferred to DOE ownership. See Figure 2 for location of 25-acre parcel.

**Table 1: Resources Identified on the STM Site**

Site #	Description	NRHP Status	Historic District
5JF842	Amphitheater & Footbridge	Listed	N/A
5JF843	Ammunition Igloo (1940)	Listed	N/A
5JF145.66	Firing Range Lines (1924)	Contributing	Camp George West
5JF145.68	Low Rock Walls	Contributing	Camp George West

***Amphitheater & Footbridge (5JF842):*** DOE has identified the amphitheater and low stone bridge as a protected site. No disturbance will occur as a result of the Proposed Action. DOE has determined that no historic properties would be affected.

***Ammunition Igloo (5FJ843):*** DOE has identified the ammunition igloo as a protected structure. No disturbance will occur as a result of the Proposed Action. DOE has determined that no historic properties would be affected.

***Camp George West Historic District:*** A 25-acre parcel of the Camp George West Historic district was recently transferred to the DOE ownership for inclusion in the STM site. This 25-acre parcel is located within an area identified for facility and infrastructure improvements. DOE anticipates developing the entire 25 acres. Two contributing features occur within the 25-acre parcel. These are two concrete firing lines (5JF145.66) and portions of low rock walls.

(5JF145.68). Photos are attached for your review. In addition, this area has the potential for buried deposits. DOE has determined that the Proposed Action would adversely affect these historic properties.

**Table 2: Determinations of Effect**

Site #	Description	NRHP Status	Determination
5JF842	Amphitheater & Footbridge	Listed	No historic properties affected
5JF843	Ammunition Igloo	Listed	No historic properties affected
5JF145.66 & 68	Camp George West Historic District Firing Range Lines & Low Rock Walls	Historic District	Historic properties are adversely affected

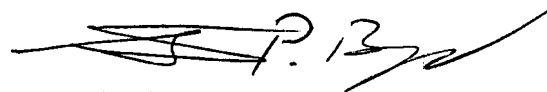
I hereby request your concurrence on the determination of affect for the Proposed Action in the site-wide EA for the STM in Jefferson County, Colorado. Your response is necessary for DOE's compliance with Section 106 of the National Historic Preservation Act (as amended) and with the Advisory Council on Historic Preservation regulations.

DOE understands that potential mitigation measures for the Camp George West Historic District could include activities such as:

- Landscaping,
- Systematic testing for buried historical archaeological deposits, and
- Continual coordination with your office.

We look forward to further consultation to develop mitigation for this project. If you require additional information, please contact **Laura Ziemke (consultant)** at 720-981-2475.

Sincerely,



Steve Blazek  
NEPA Compliance Officer

Enclosures: As Stated

Cc: Laura Ziemke, SAIC

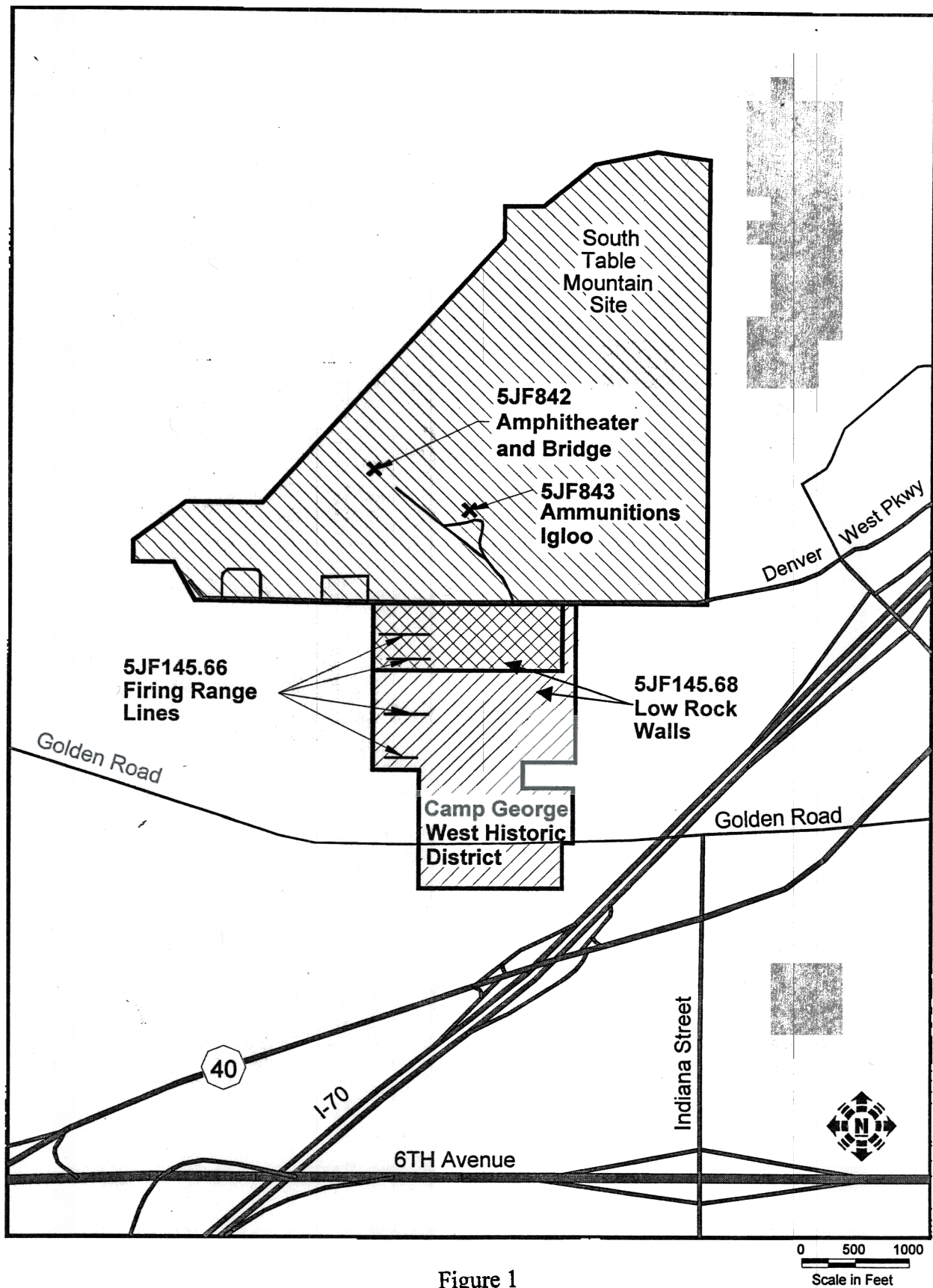
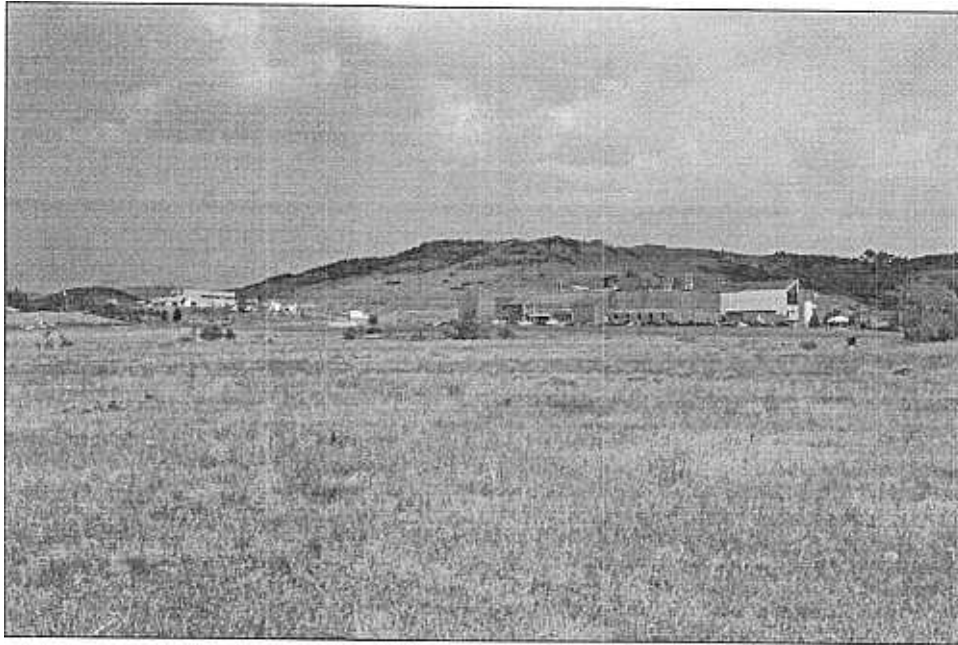
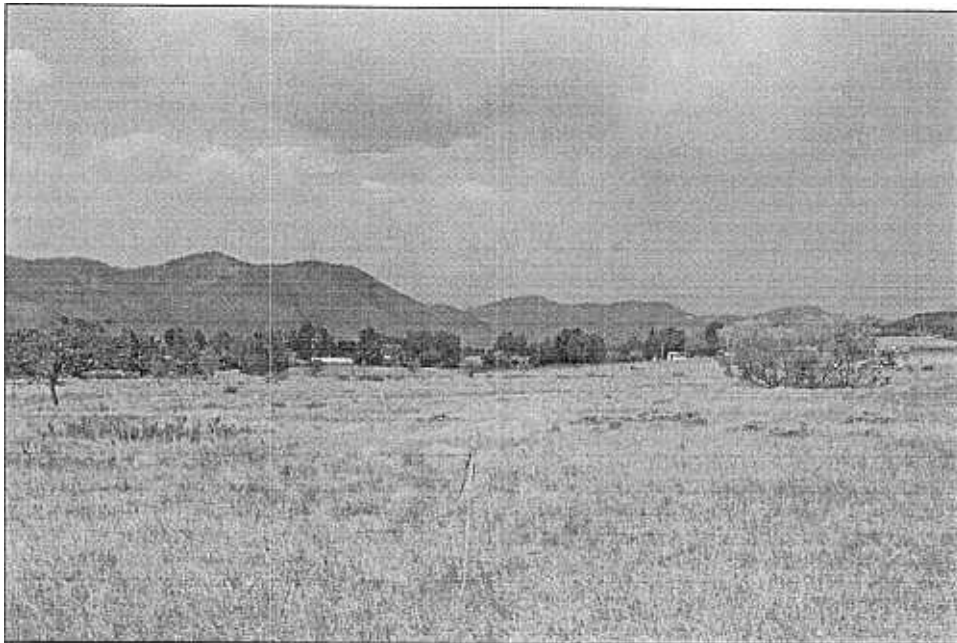


Figure 1

STM Site & Historic District Boundaries and Locations of Historic Structures



**Overview of 25-acre parcel to be developed by DOE – Facing Northwest  
Existing South Table Mountain structures are in the background.  
This parcel is included in the Camp George West Historic District boundaries.**



**Overview of 25-acre parcel to be developed by DOE – Facing West  
Northern segment of Camp George West Historic District**





**Tumbled Rock Walls**



**Firing Line – Facing West**



**Firing Line – Facing East**



**Science Applications International Corporation**  
*An Employee-Owned Company*

February 26, 2003

Joe Saldibar  
Colorado Historical Society  
Office of Archaeology and Historic Preservation  
1300 Broadway  
Denver, CO 80203

**RE:** Camp George West Historic District  
U.S. Department of Energy Site-wide Environmental Assessment of the National  
Renewable Energy Laboratory's South Table Mountain Complex, DOE/EA-1440.

Dear Joe:

As we discussed yesterday, I'm sending you a copy of the letter submitted to Ms. Contiguglia by the Department of Energy (DOE) on October 10, 2002. The letter is a request for concurrence on the determination of effect by the proposed improvements and maintenance activities at the DOE's South Table Mountain site and the Denver West Office Park. I will give you a call early next week to discuss the project.

Thank you for your assistance.

Sincerely,

SCIENCE APPLICATIONS INTERNATIONAL CORPORATION

A handwritten signature in dark ink, appearing to read "Laura Ziemke", is written over the printed name and title.

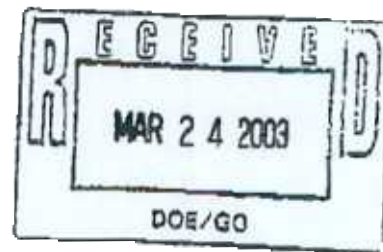
Laura Ziemke  
Cultural Resource Specialist  
720-981-2475

cc: Maureen Jordan, NREL  
Brian Kennedy, SAIC





**COLORADO  
HISTORICAL  
SOCIETY**



**The Colorado History Museum 1300 Broadway Denver, Colorado 80203-2137**

14 March 2003

Roselle Drahushak-Crow  
NEPA Document Manager  
DOE Golden Field Office  
1617 Cole Blvd.  
Golden, CO 80401-3393

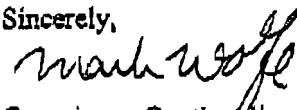
**RE: National Renewable Energy Laboratory, South Table Mountain Complex, Golden, Jefferson  
County**

Dear Ms. Drahushak-Crow:

Thank you for your recent correspondence dated 5 March 2003, concerning the proposed new construction at the National Renewable Energy Laboratory in Golden. Your letter states that a Draft Environmental Assessment (DOE/EA 1440) is now available for review. Please send us a copy of this document for our files. When we have received the document, we will conduct our review and provide comments, if necessary.

If you have any questions, please feel free to contact Joseph Saldibar, Architectural Services Coordinator, at (303) 866-3741. We look forward to hearing from you.

Sincerely,

  
Georgianna Contiguglia  
State Historic Preservation Officer, and  
President, Colorado Historical Society

---

**OFFICE OF ARCHAEOLOGY AND HISTORIC PRESERVATION**

303-866-3392 \* Fax 303-866-2711 \* E-mail: oahp@chs.state.co.us \* Internet: [www.coloradohistory-oahp.org](http://www.coloradohistory-oahp.org)



# COLORADO HISTORICAL SOCIETY

The Colorado History Museum 1300 Broadway Denver, Colorado 80203-2137

23 April 2003

Roselle Drahushak-Crow  
Document Manager  
Department of Energy  
Golden Field Office  
1617 Cole Blvd.  
Golden, Co 80401-3393

RE: Draft Environmental Assessment, NREL South Table Mountain Complex, Jefferson County

Dear Ms. Drahushak-Crow:

Thank you for your recent correspondence dated 31 March 2003, concerning the proposed additions to the existing National Renewable Energy Laboratory complex at South Table Mountain. Our office has reviewed the submitted materials. Our files indicate that there are no significant archaeological or historical resources within the Area of Potential Effect (APE). There are several historic features located near the project area, but they do not fall into the APE as they will not be physically or visually affected by the project.

However, the archaeologists at OAHp have indicated that there a number of unsurveyed archaeological sites in this area. The sites have not been recorded and might be overlooked during the course of construction. We believe that a full cultural resources survey of the project area should be conducted by a professional archaeologist, and the results be incorporated into the Final Environmental Assessment. This would allow NREL to better plan potential additions to avoid archaeological sites, and would likely reduce construction delays caused by accidental discoveries.

If you have any questions, please feel free to contact Joseph Saldibar, Architectural Services Coordinator, at (303) 866-3741. We look forward to hearing from you.

Sincerely,

*for* *mark woffe*  
Georgianna Contiguglia  
State Historic Preservation Officer, and  
President, Colorado Historical Society

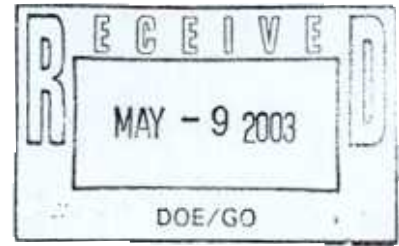
Post-it® Fax Note	7671	Date	6/6/03	# of pages	1
To	Brian Kennedy	From	Maureen Jordan		
Co./Dept.	SAIC	Co.	NREL ES&H		
Phone #		Phone #	303-275-3248		
Fax #	303-969-0200	Fax #			

OFFICE OF ARCHAEOLOGY AND HISTORIC PRESERVATION

303-866-3392 • Fax 303-866-2711 • E-mail: oahp@chs.state.co.us • Internet: www.coloradohistory-oahp.org



**COLORADO  
HISTORICAL  
SOCIETY**



**The Colorado History Museum 1300 Broadway Denver, Colorado 80203-2137**

2 May 2003

Steve Blazek  
NEPA Compliance Officer  
Department of Energy  
Golden Field Office  
1617 Cole Boulevard  
Golden, Colorado 80401-3933

RE: National Renewable Energy South Table Mountain Complex and Denver West Office Park,  
Camp George West (5JF.145), Jefferson County

Dear Mr. Blazek:

Thank you for your recent correspondence dated 26 February 2003, concerning the proposed development of a portion of Camp George West to accommodate additions to the National Renewable Energy Laboratory's South Table Mountain complex. The project will also allow for improvements and modifications to existing buildings at the Denver West Office Park (DWOP), a leased office facility. We apologize for the delay in our response. Our office has reviewed the submitted materials, as well as a Draft Environmental Assessment prepared by the Department of Energy (dated March 2003) that was submitted as part of a related project.

We concur with your assessment that there are four historic properties located within the Area of Potential Effect (APE). The four sites include:

5JF.842, Amphitheater and Footbridge  
5JF.843, Ammunition Igloo  
5JF.145.66, Firing Range Lines, Camp George West  
5JF.145.68, Low Rock Walls, Camp George West

The proposed development of this site will not adversely affect the Amphitheater, footbridge, or igloo. However, the Firing Range Lines and Low Rock Walls will be adversely affected by this project. The development of this area will result in the destruction of both resources. Therefore, please refer to the draft Memorandum of Agreement (MOA) enclosed with this letter. An electronic copy will be e-mailed to your office.

---

**OFFICE OF ARCHAEOLOGY AND HISTORIC PRESERVATION**

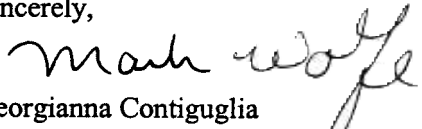
303-866-3392 \* Fax 303-866-2711 \* E-mail: [oahp@chs.state.co.us](mailto:oahp@chs.state.co.us) \* Internet: [www.coloradohistory-oahp.org](http://www.coloradohistory-oahp.org)

This Memorandum of Agreement should be filled out by your office and signed by the appropriate official signatory. The MOA should then be returned to our office for signature. We believe that the MOA should include the following mitigation measures:

- 1) Level II HABS/HAER documentation of 5JF.145.66 and 5JF.145.68: These two historic resources will be demolished. As a result, they should be photographed according to HABS/HAER Level II Documentation Standards (Black and white photos, printed on archival photo paper, sketch drawings of the resources, location maps, history, etc.) Please refer to the enclosed paper on the various forms of HABS/HAER documentation (OAH #1595). Also please note that while OAH #1595 refers to 120-mm ("medium format") photography as the standard for Level II Documentation, our office will also accept 35-mm photography.
- 2) A plan, or a promise to create a plan, to survey archaeological resources within the project area. Such a survey could take place all at once, and be included in the planned Final Environmental Assessment, or it could be parceled out over a period of time as building projects (and funding) come up.
- 3) If the archaeological survey is not planned for the planned Final Environmental Assessment, then the MOA should include language describing how the SHPO will be contacted and consulted with when future projects associated with the property come up.
- 4) If a full archaeological survey is not included in the planned Final Environmental Assessment, the SHPO must be consulted each time a building is to be constructed in the project area. Each proposed building site will require a "mini-survey" to determine whether there are archaeological resources at that particular site.

If you have any questions, please feel free to contact Joseph Saldibar, Architectural Services Coordinator, at (303) 866-3741. We look forward to hearing from you.

Sincerely,

  
for Marianna Contiguglia  
State Historic Preservation Officer, and  
President, Colorado Historical Society

Enclosed: *Draft Memorandum of Agreement (MOA)*  
*Addendum A: Archival Documentation*  
*OAH #1595: Historic Resource Documentation Standards*

CC: Laura Ziemke, Cultural Resource Specialist, SAIC

## **STATUS OF CONSULTATION AND COORDINATION WITH THE STATE HISTORIC PRESERVATION OFFICER**

Consultation with the SHOP to develop final mitigation measures is ongoing. Consistent with Federal law (National Historic Preservation Act, Section 106 and 36 CFR 800.5 and 800.6, DOE and the State Historic Preservation Officer shall negotiate an Memorandum of Agreement (MOA) regarding requirements for identified cultural resources in Zone 6.