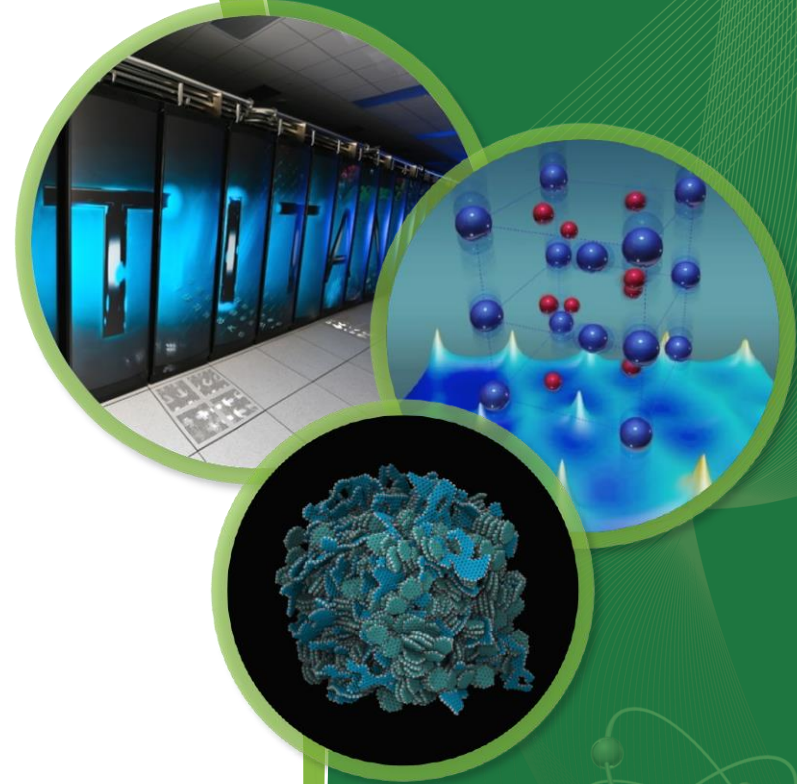


EnPI 5.0

Install and Uninstall Instructions



Installation Instructions

- The latest version of the EnPI Tool has been developed as an Excel Add-In and needs to be installed to run.
- Once installed, an “EnPI” tab will appear at the top of any Excel workbook.
- The installation method does not vary for users with Windows 7 or later, but some screens may look different.

Download and Save to Computer

- Downloading from
 - <https://energy.gov/eere/amo/articles/energy-performance-indicator-tool>
 - <https://github.com/ORNL-AMO/EnPI/releases>
- Choose the proper file for your computer
 - x64 or x86
- Save the Setup (.msi) file to your computer
- Open the Setup (.msi) file

If Windows Defender triggers...

Windows protected your PC

Windows Defender SmartScreen prevented an unrecognized app from starting. Running this app might put your PC at risk.

[More info](#)

Don't run

1. Click "More Info"

Windows protected your PC

Windows Defender SmartScreen prevented an unrecognized app from starting. Running this app might put your PC at risk.

App: Setup.msi

Publisher: Unknown publisher

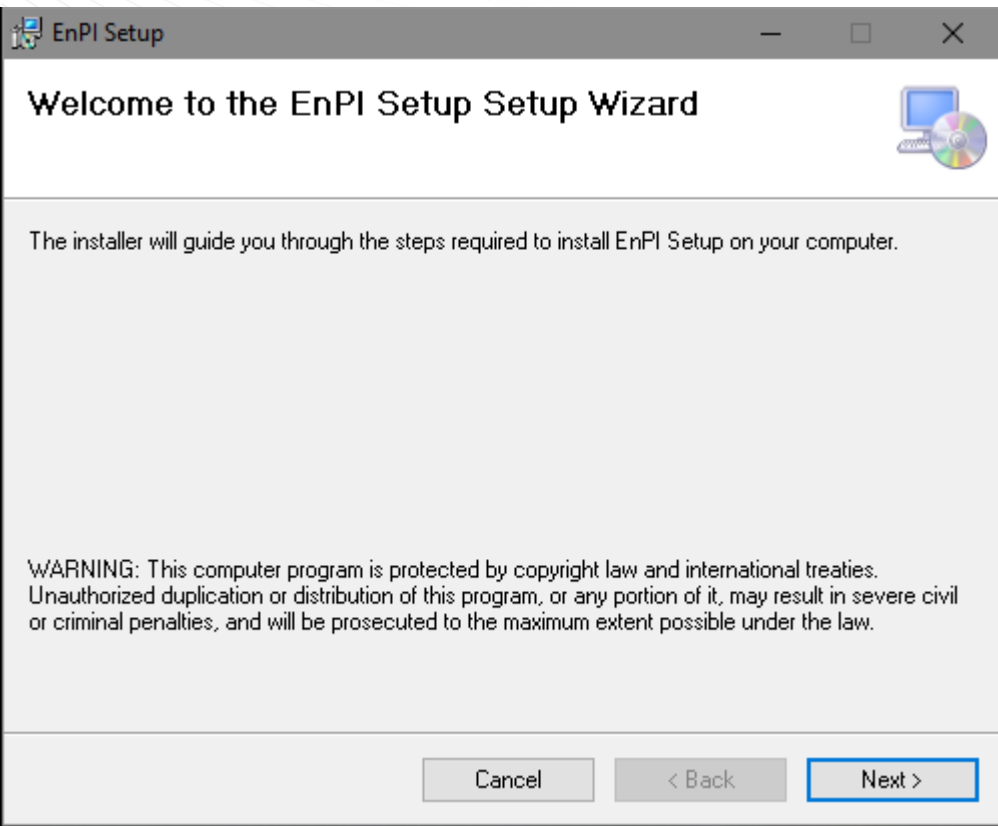
Run anyway

Don't run

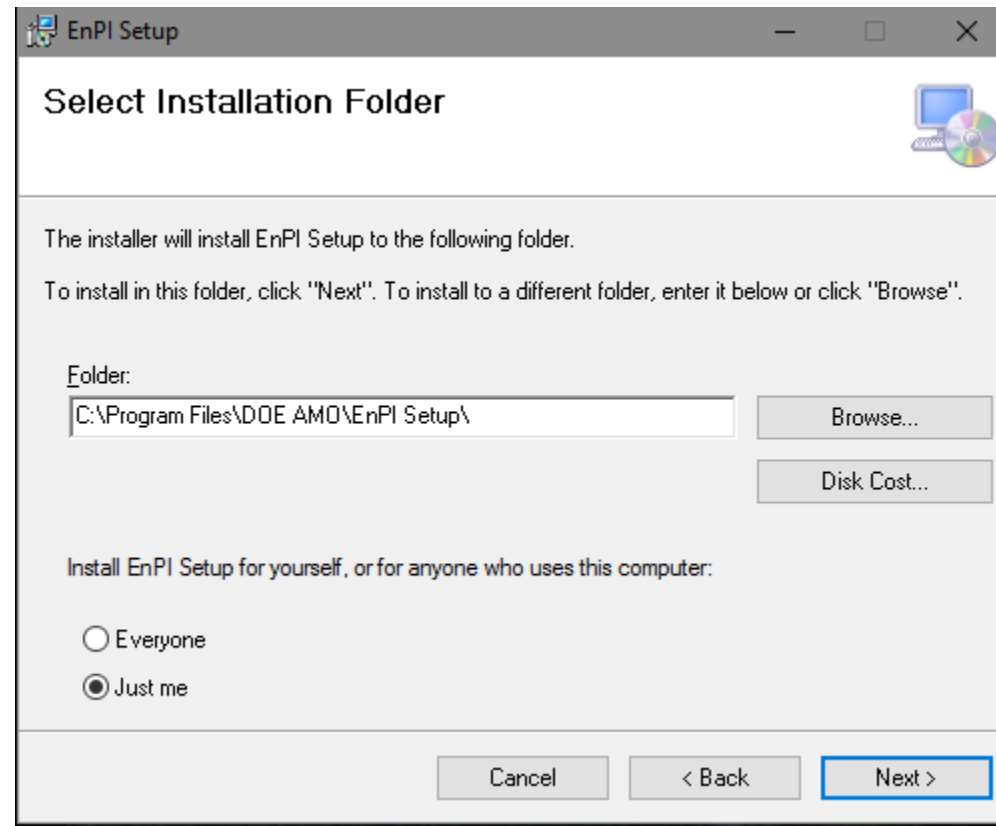
2. Click "Run Anyway"

Follow the instructions in the Setup Wizard

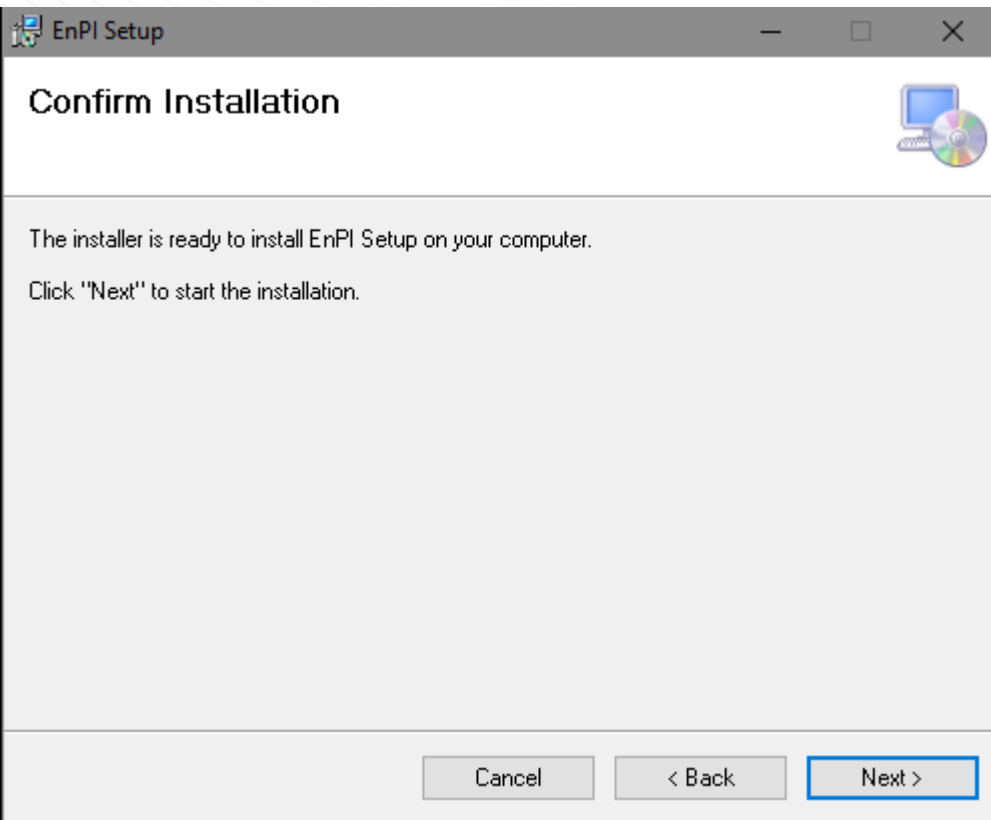
1. Click "Next"



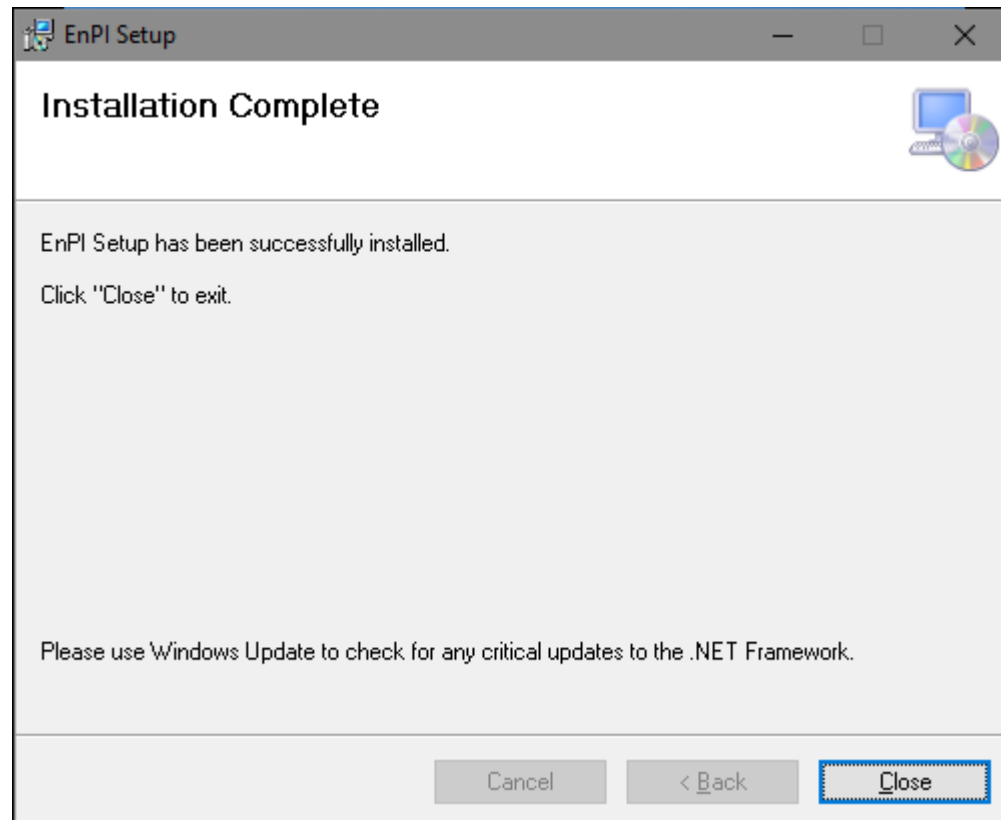
2. Click "Next"



3. Click "Next"

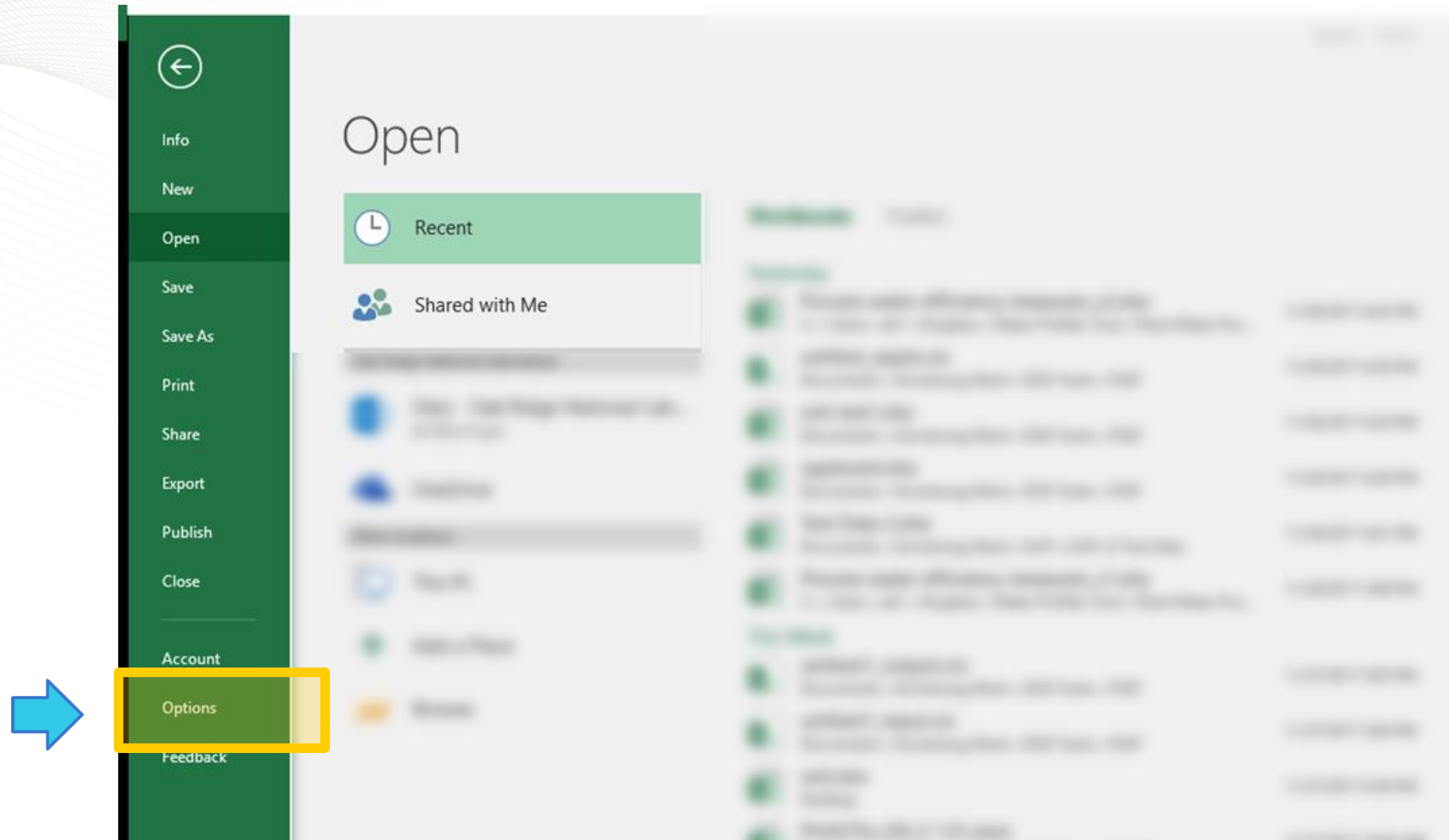


4. Click "Close"



If EnPI is not showing up in your Excel Toolbar

1. Open Excel
2. Click "Options"



3. Click "Add-ins"



Excel Options

General
Formulas
Data
Proofing
Save
Language
Ease of Access
Advanced
Customize Ribbon
Quick Access Toolbar
Add-ins
Trust Center

General options for working with Excel.

User Interface options

- ☒ Show Mini Toolbar on selection ⓘ
- ☒ Show Quick Analysis options on selection
- ☒ Enable Live Preview ⓘ
- ScreenTip style: Show feature descriptions in ScreenTips ▼

When creating new workbooks

- Use this as the default font: Body Font ▼
- Font size: 11 ▼
- Default view for new sheets: Normal View ▼
- Include this many sheets: 1 ▼

Personalize your copy of Microsoft Office

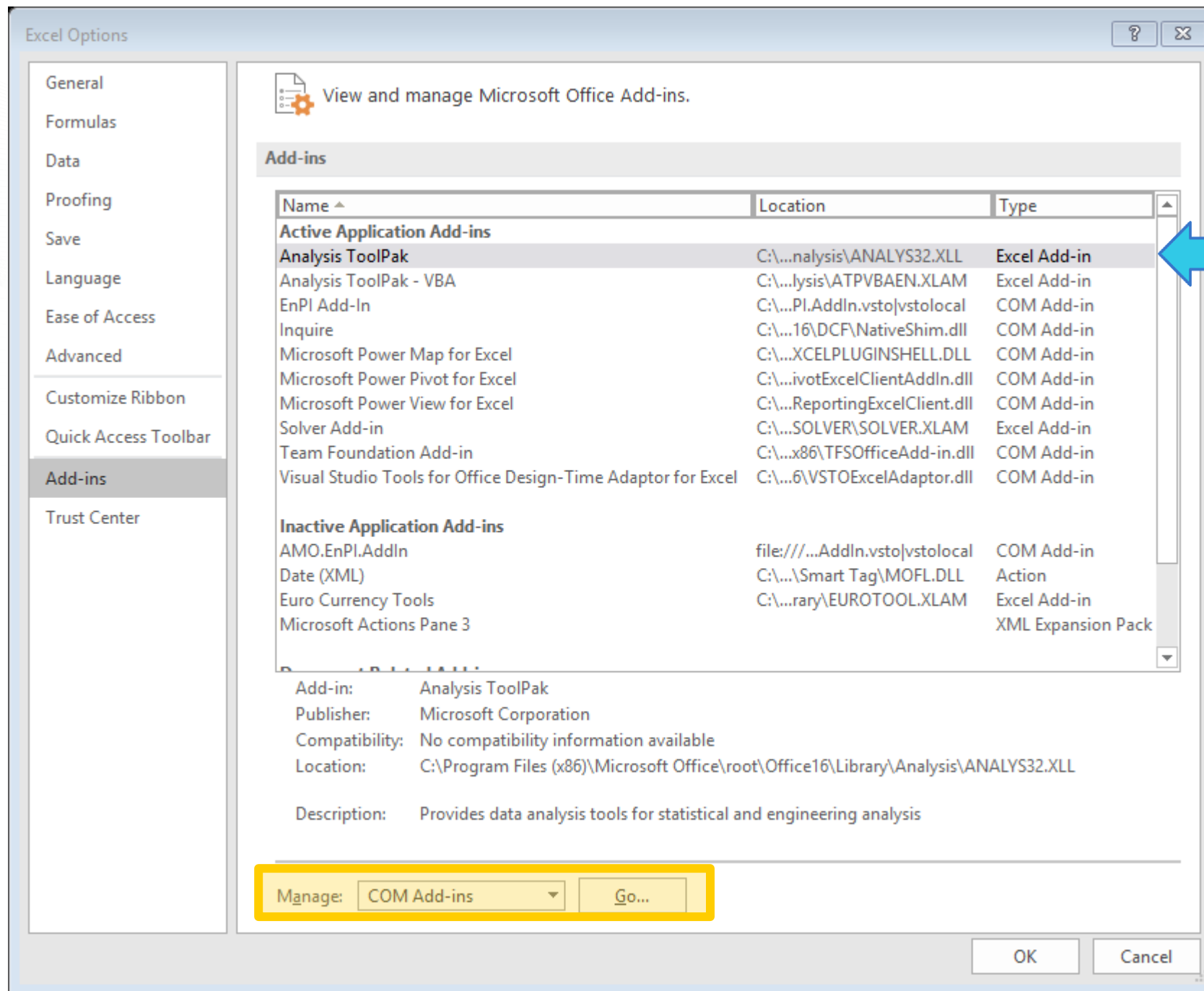
- User name: Kristina O. Armstrong
- ☒ Always use these values regardless of sign in to Office.
- Office Background: Underwater ▼
- Office Theme: Colorful ▼

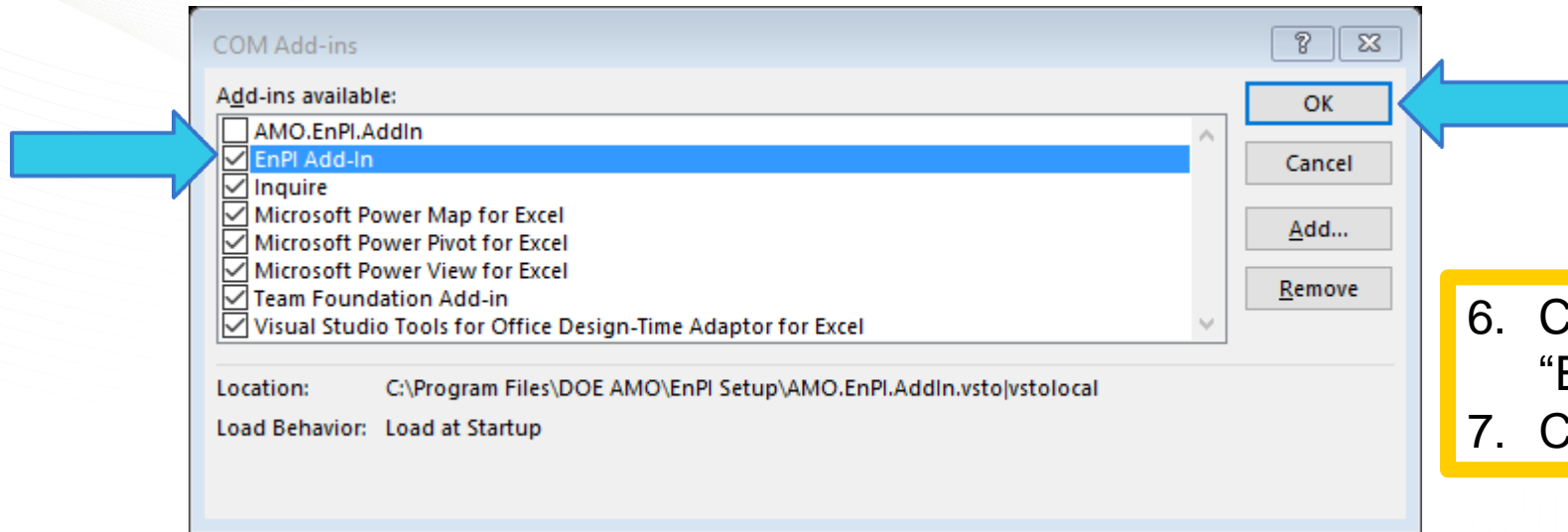
Start up options

- Choose the extensions you want Excel to open by default: Default Programs...
- ☒ Tell me if Microsoft Excel isn't the default program for viewing and editing spreadsheets.
- ☒ Show the Start screen when this application starts

OK Cancel

4. Check that you can see "EnPI Add-in"
5. If not, Select "COM Add-ins" from the "Manage" list and click "Go"

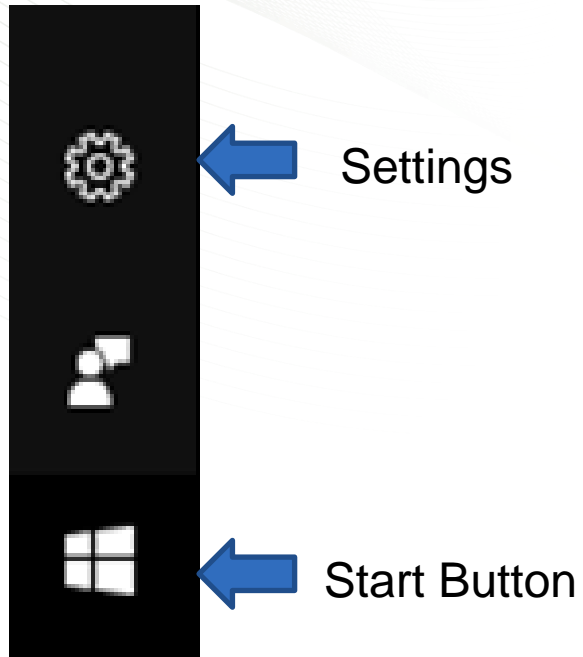




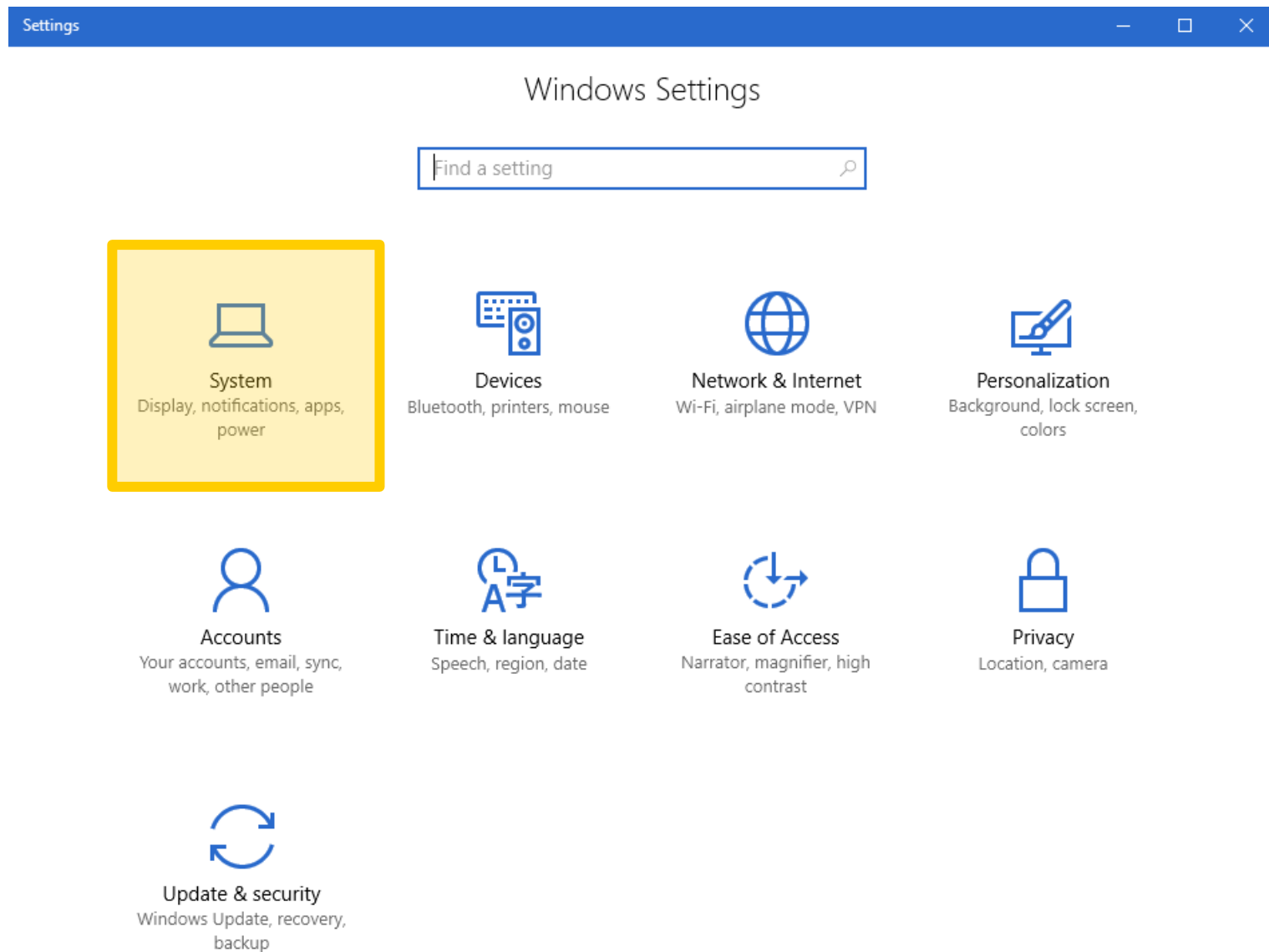
6. Click the checkbox for "EnPI Add-in"
7. Click "OK"

Uninstallation Instructions

Uninstall Via Settings



1. Open your Settings Menu (the Gear Icon) via the Start Button
2. Click "System"



- Home
- Find a setting
- System
- Display
- Apps & features**
- Default apps
- Notifications & actions
- Power & sleep
- Storage
- Offline maps
- Tablet mode
- Multitasking
- Projecting to this PC
- Apps for websites
- About

Apps & features


[Manage optional features](#)

Search, sort, and filter by drive. If you would like to uninstall or move an app, select it from the list.

EnPI

Sort by name

Show content from all drives

	EnPI Setup DOE AMO	7.97 MB 10/16/2017
Modify		Uninstall

Related settings

[Programs and Features](#)

3. On the far left, Click
“Apps & features”

4. Search for “EnPI”

5. Click “Uninstall”

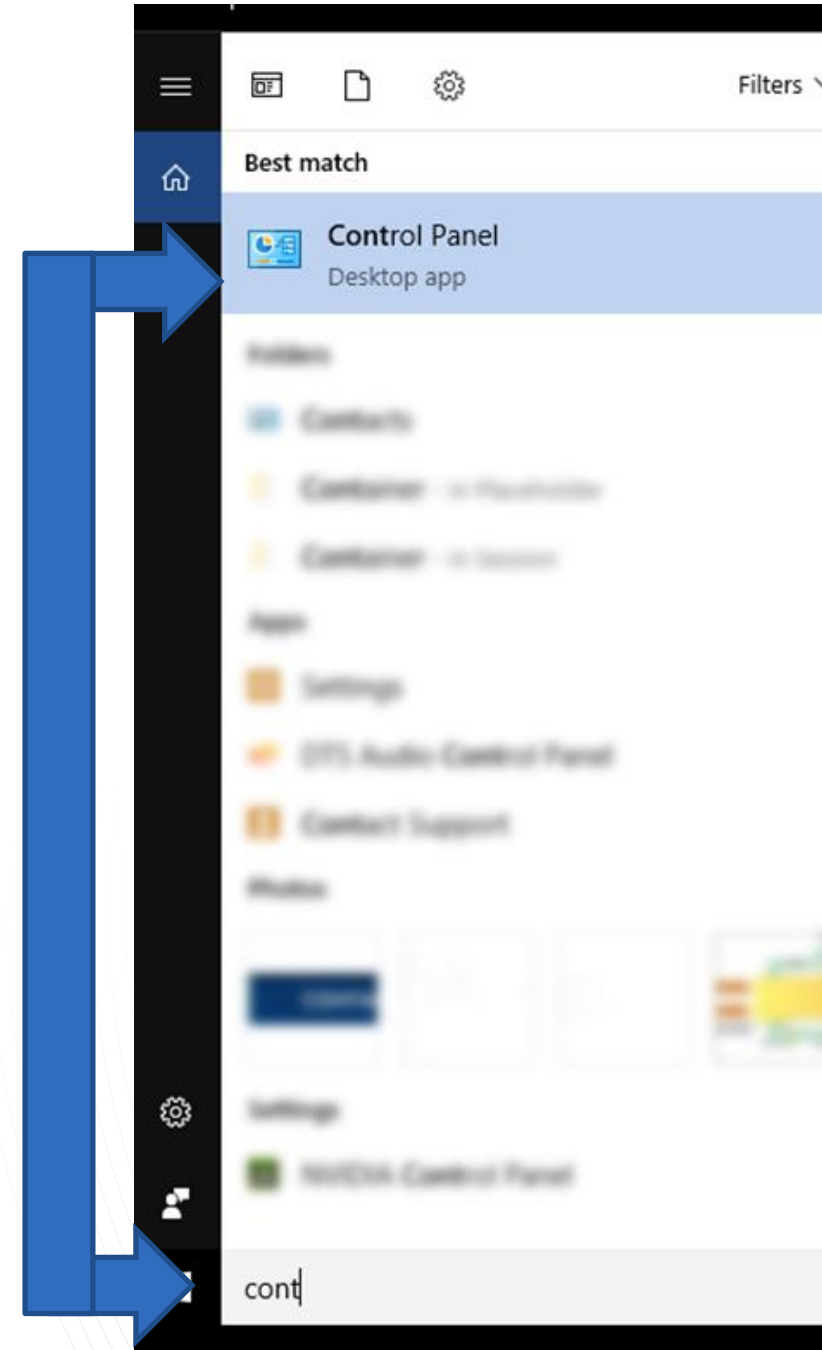
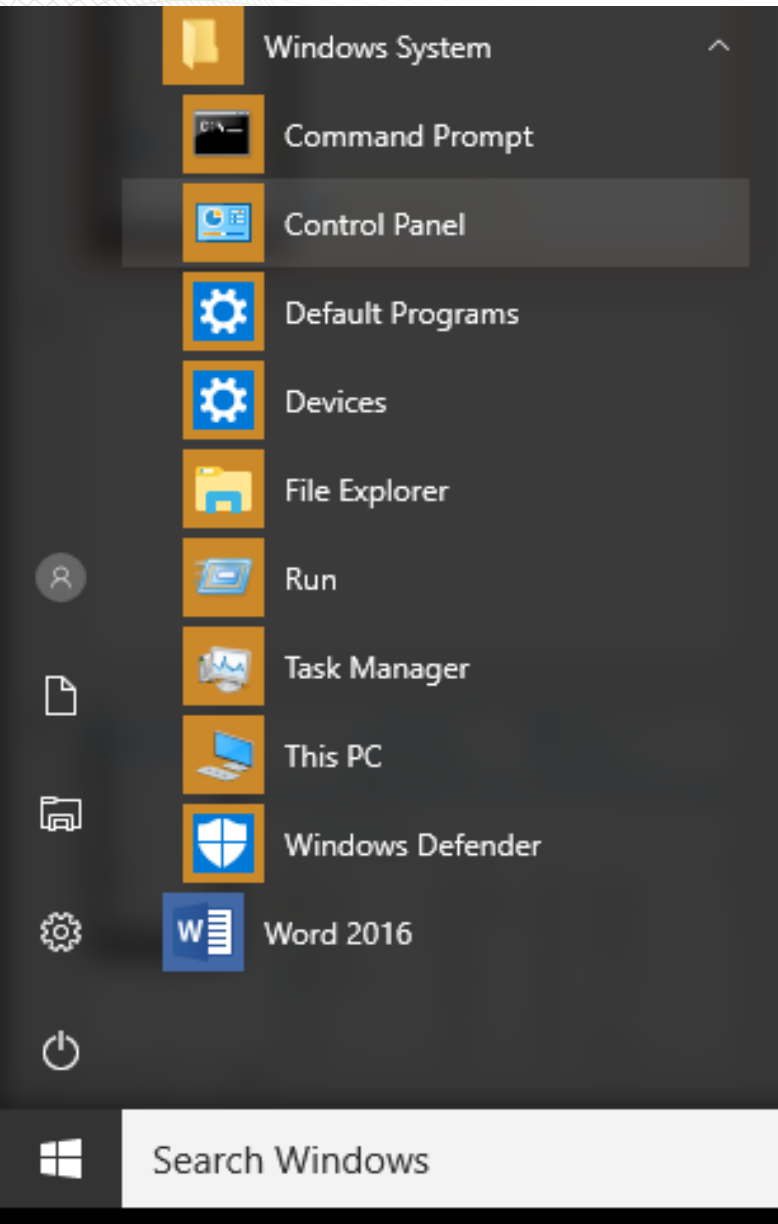
Uninstall Via Control Panel

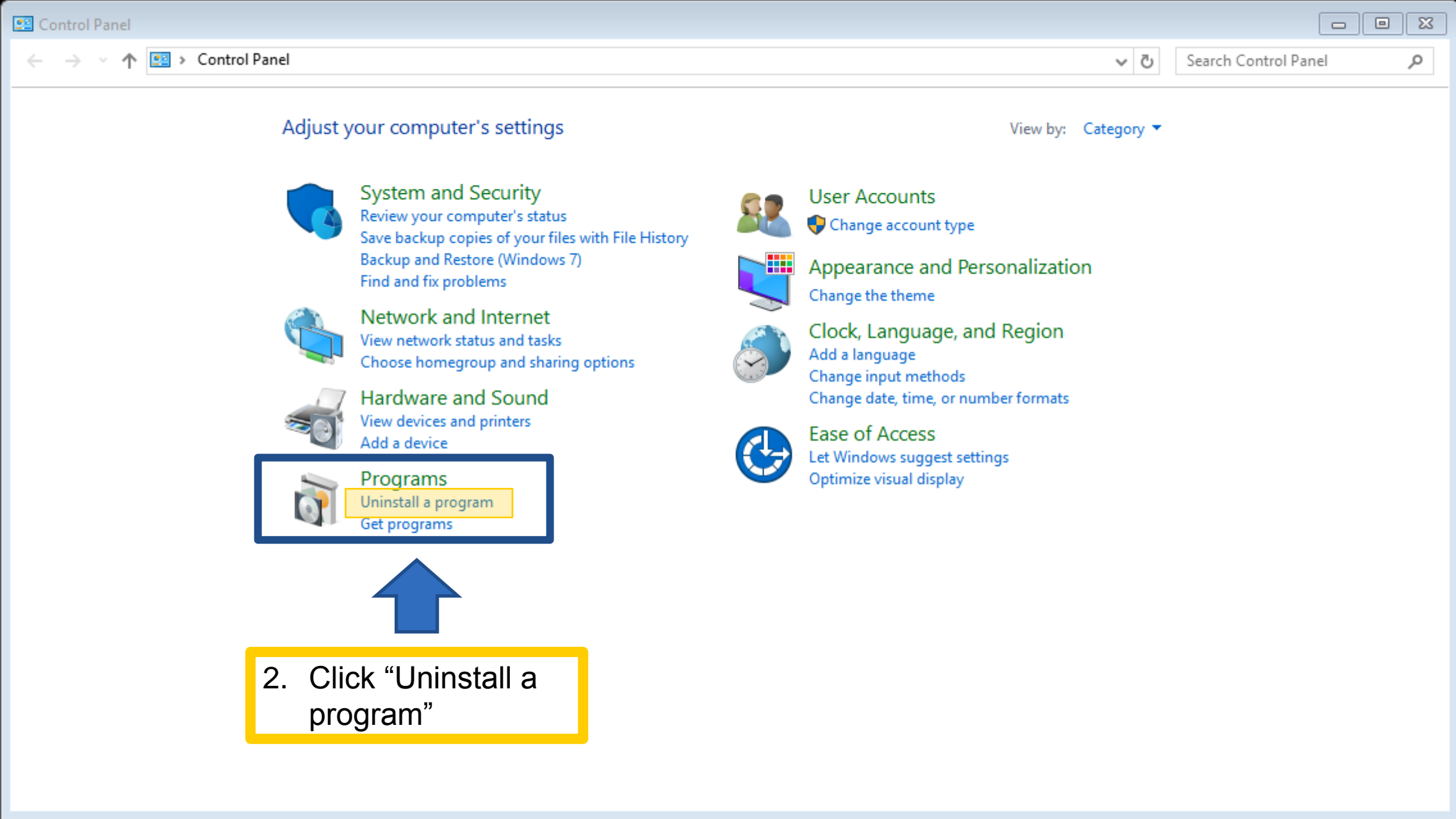
The diagram illustrates two ways to access the Windows Control Panel. On the left, the Windows Start menu is shown with the 'Control Panel' icon highlighted. A blue arrow points from the 'Control Panel' icon to a central yellow box. On the right, the Windows search interface is shown with 'Control Panel' entered in the search bar. A blue arrow points from the search bar to the same central yellow box. The yellow box contains the following instructions:

1. Open the Control Panel
 - a) Open "Windows System" Folder
 - b) Using search function

Blue arrows also point from the yellow box to the 'Control Panel' icon in the Start menu and to the 'Control Panel' search result on the right.

1. Open the Control Panel
 - a) Open “Windows System” Folder
 - b) Using search function





Programs and Features

Control Panel Home

View installed updates

Turn Windows features on or off

Install a program from the network

Uninstall or change a program

To uninstall a program, select it from the list and then click Uninstall, Change, or Repair.

4

Uninstall

Change Repair

Name	Publisher	Installed On	Size	Version
EnPI Setup	DOE AMO	10/16/2017	7.96 MB	5.1.2

3

3. Find & Click "EnPI Setup"

4. Click "Uninstall"

DOE AMO Product version: 5.1.2
Size: 7.96 MB