

Technical Area 21 Integrated Closure Strategy

for

Northern New Mexico Citizen's Advisory Board

David Rhodes
Supervisor for Environmental Remediation Projects (including Demolition)

July 30, 2014



EM Environmental Management

safety ♦ performance ♦ cleanup ♦ closure



Overview

- ❑ **TA-21 Mission**
- ❑ **Consent Order Investigations**
- ❑ **ARRA Projects**
- ❑ **Remaining Activities**
 - Demolition
 - DP Site Aggregate Area
 - Material Disposal Areas
- ❑ **Plans**



Commercial businesses

MDA B

MDA V

DP West

MDA T

MDA A

DP East

MDA U



EM Environmental Management

safety ♦ performance ♦ cleanup ♦ closure



TA-21 Mission

- **DP West**
 - Plutonium processing

- **DP East and TSTA**
 - Polonium and Tritium processing

- **Five Disposal Sites**
 - MDAs U, V, and B radiological disposal
 - MDAs A and T radiological materials, liquid, and grout disposal

- **Balance of Plant Support Facilities**

Consent Order Investigations

- **~200 SWMUs**
 - DP Sites Aggregate Area Phase II investigation
- **~24 outfalls**
 - Removed or closed
- **Material Disposal Areas**
 - MDA-V Investigated and 2 in-situ vitrification technology pilots
 - MDA-U investigated and NFA
 - MDA-B waste excavation 2009 thru 2011
- **MDA-A first phase investigation and General's Tanks heel characterization**

ARRA MDA-B Excavation to Residential



EM Environmental Management

safety ❖ performance ❖ cleanup ❖ closure



ARRA TSTA / DP East Demolition to Residential



EM Environmental Management

safety ♦ performance ♦ cleanup ♦ closure



ARRA DP West Demolition to Industrial



EM Environmental Management

safety ♦ performance ♦ cleanup ♦ closure



Remaining Demolition



- **West and East Water Towers in June 2014**
 - Federalized project

- **Balance of Plant in 2015**
 - Warehouse
 - Sanitary Wastewater Treatment Facility
 - Federalized project

- **Radiological Liquid Waste Facility in 2016**

- **DP West Slabs/basements in 2017**

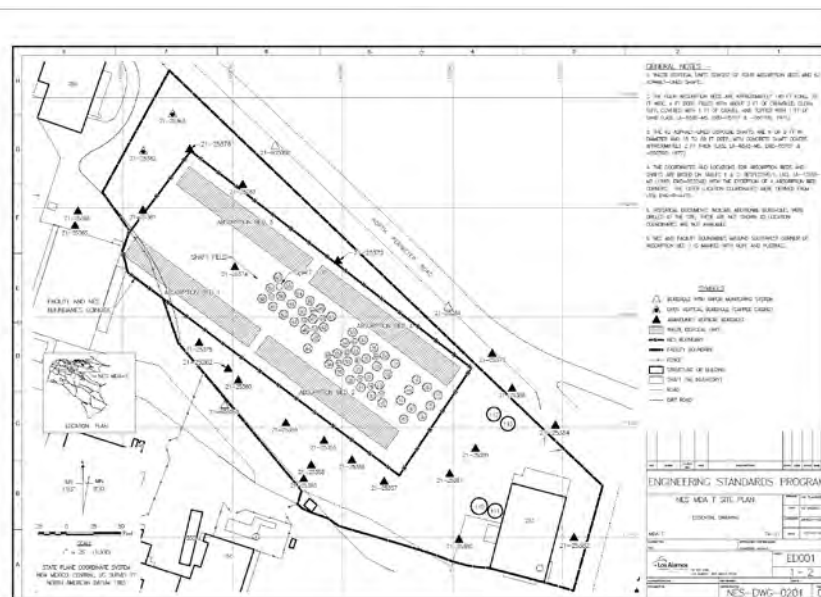


EM

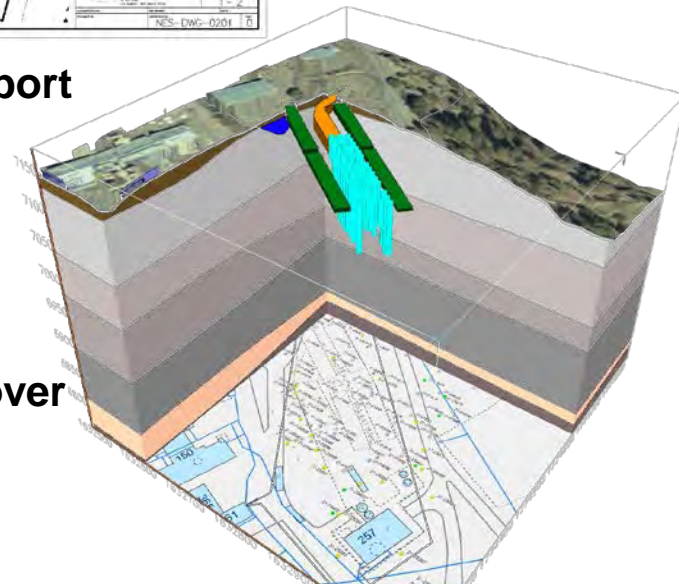
Environmental Management

safety ♦ performance ♦ cleanup ♦ closure

Remaining MDA-T overview



- Phase I Investigation Report completed in September 2006
- Need CME
- Expected engineering cover as remedy



EM Environmental Management

safety ♦ performance ♦ cleanup ♦ closure



Remaining Activities

- **DP Site Aggregate Area**
 - Remove buried waste lines - DP West to RLWF

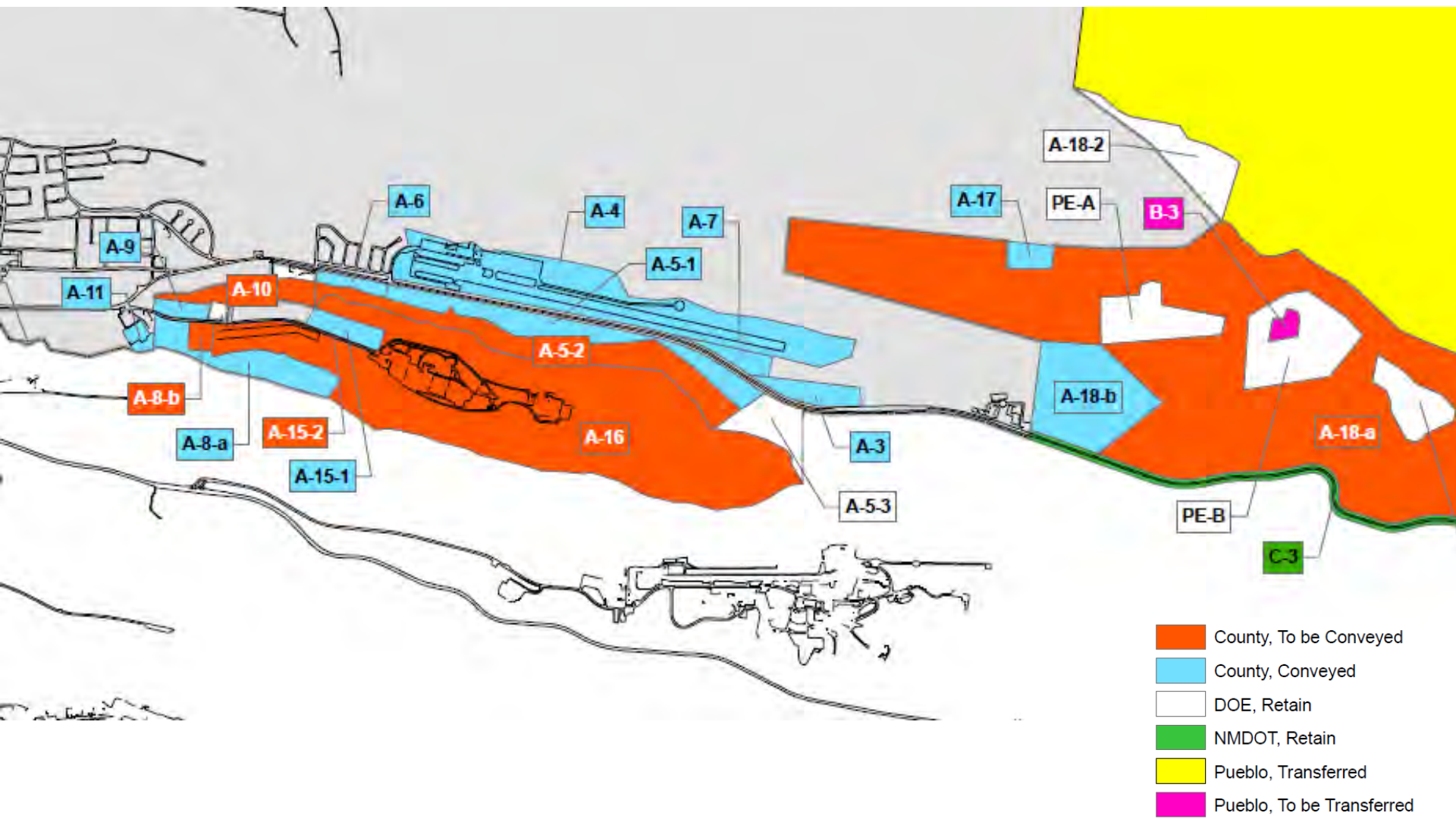


- **Material Disposal Area A**
 - General's Tanks Removal
 - Requested NMED allow completion of characterization
 - Characterization of pits and trenches
 - Corrective measures evaluation

Plans

- **Demolition of remaining facilities 2016-2018**
- **General's Tanks removal project FY2016-2017**
- **Removal of buried waste lines from DP West to RLWF**
- **Characterize MDA-A pits and trenches, CME, remedy**
- **MDA-T CME and remedy**
 - Possibly retained federal control (no transfer) with Los Alamos County surface use (lease)
- **Land transfer to Los Alamos County - map**

Land Transfer Map



EM Environmental Management

safety ♦ performance ♦ cleanup ♦ closure



Summary

- ☐ Quick start with water towers then continued demolition
- ☐ Integration of demolition and remediating contaminated soils
- ☐ Three year completion window – exclusive of MDAs
- ☐ Two years for MDAs
- ☐ All sequencing and schedules for work are preliminary (except for the water tower demolition) will have to be integrated with the New Mexico Environment Department work under the Consent Order and will include stakeholder (NNMCAB) inputs.