



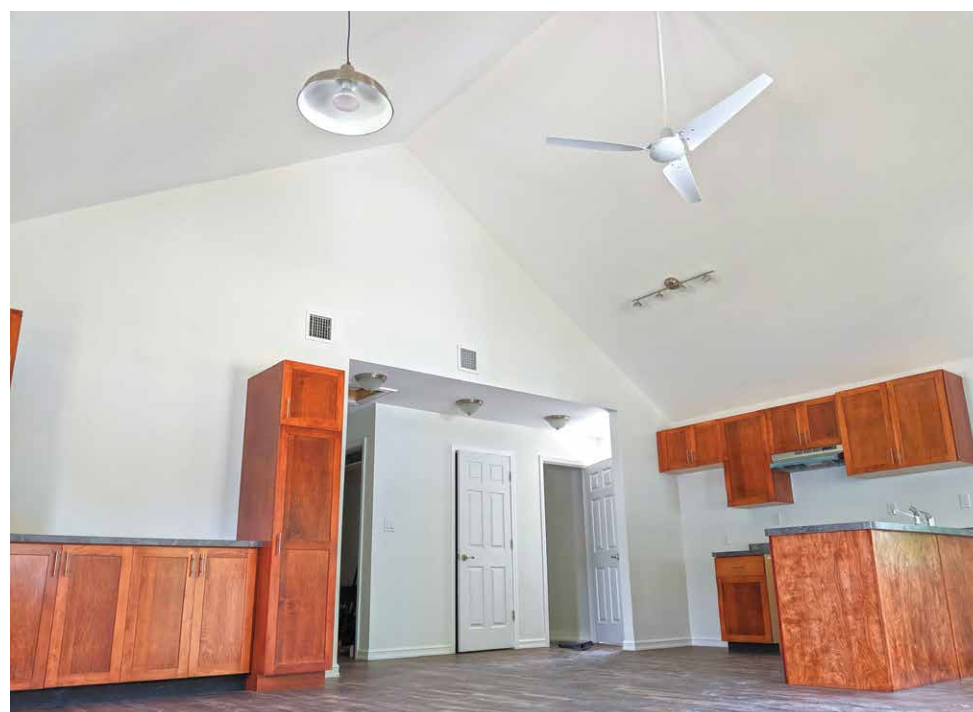
United Way of Long Island

Suffolk County LandBank Attainable Housing | East Patchogue, NY | UnitedWayLI.org



Photos courtesy of United Way of Long Island

“Each not-for-profit ZERH project will provide a legacy of sustainable energy efficiency.” *United Way of Long Island*



PROJECT DATA

- **Layout:** 3 bdrm, 2 bath, 1 fl, 1,360 ft²
- **Climate:** IECC 4A, mixed-humid
- **Completed:** May 2019
- **Category:** affordable

MODELED PERFORMANCE DATA

- **HERS Index:** without PV 51; with PV -15
- **Annual Energy Costs:** without PV \$1,700; with PV \$50
- **Annual Energy Cost Savings:** (vs typical new homes) without PV \$1,600; with PV \$3,200
- **Annual Energy Savings:** without PV 8,646 kWh; with PV 2,785 kWh
- **Savings in the First 30 Years:** \$136,900

CONTACT

Rick Wertheim
631-940-3722
rwertheim@unitedwayli.org

KEY FEATURES

- **Walls:** 2x6 24" o.c. advanced framing, R-31 total: 5.5" blown fiberglass; 5/8" CDX plywood sheathing, house wrap, 2" XPS taped rigid foam, vinyl siding.
- **Roof:** Gable roof; 5/8" CDX plywood sheathing, underlayment, ice-and-water shield, architectural shingles, ridge vent. Truss design has insulated chase for HVAC.
- **Attic:** Vented attic, 15" R-50 to R-74 blown fiberglass, trusses designed with center chase for HVAC; 2" R-14 rigid foam plus 15" blown fiberglass over HVAC chase; 18" raised heel trusses.
- **Foundation:** Insulated basement, 8" poured concrete wall, 2" XPS exterior rigid foam.
- **Windows:** Triple-pane, argon-filled, low-e2, vinyl casement frames, U=0.19, SHGC=0.21.
- **Air Sealing:** 1.15 ACH 50.
- **Ventilation:** ERV, MERV 12 filter, whole-house dehumidification, motion and humidity sensors on spot ventilation fans.
- **HVAC:** Ducted mini-split heat pump, 9.8 HSPF, 16.2 SEER; rigid metal ducts.
- **Hot Water:** Heat pump water heater, 3.45 EF, 50-gal.; compact plumbing with PEX piping.
- **Lighting:** 100% LED, integrated lighting controls.
- **Appliances:** ENERGY STAR refrigerator, dishwasher, and clothes washer.
- **Solar:** 9.8-kW PV system.
- **Water Conservation:** EPA WaterSense fixtures, smart irrigation, structural drainable driveway, below-grade storm drainage rings.
- **Energy Management System:** Smart energy monitoring system, indoor air quality monitors.
- **Other:** Electric vehicle charging station, low-threshold entries, wider doors, low-to-no-VOC paints, CARB-compliant cabinets, aerobic on-site wastewater treatment.



Energy Efficiency &
Renewable Energy



For more information on the **DOE Zero Energy Ready Home** program, go to <http://energy.gov/eere/buildings/zero-energy-ready-home> or scan the QR code.



PNNL-SA-147345 September 2019