



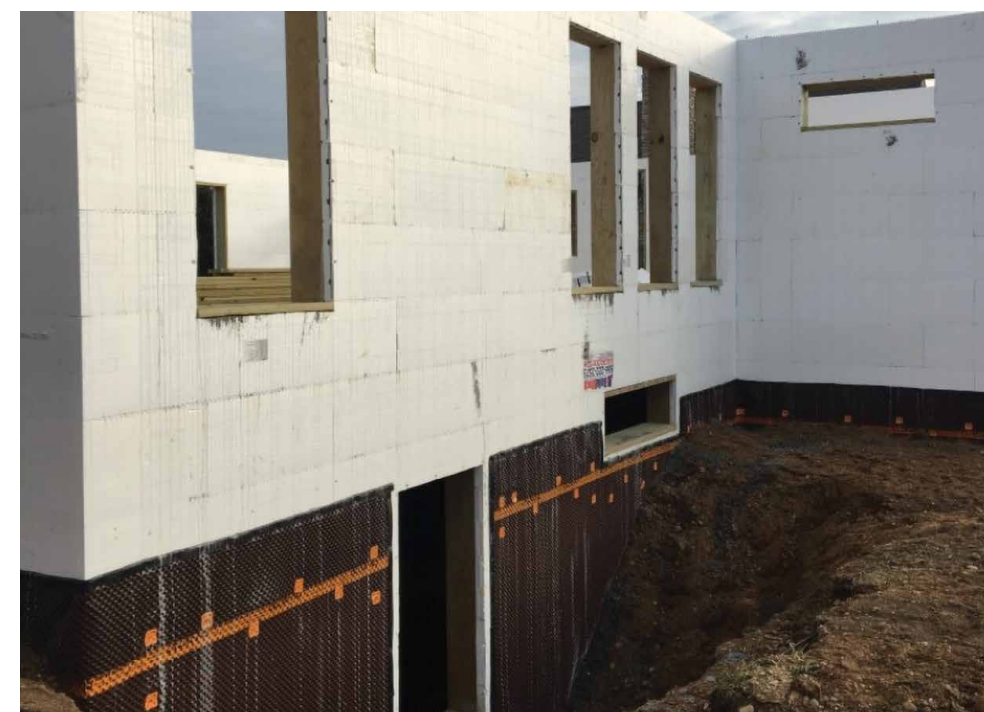
Charis Homes

The Sanctuary | North Canton, OH | CharisHomes.com



Photos courtesy of Charis Homes

"The home is quiet, comfortable and dust-free. The utilities are low." *Home owner*



PROJECT DATA

- **Layout:** 3 bdrm, 3 bath, 1 fl + bsmt, 4,294 ft²
- **Climate:** IECC 5A, cold
- **Completed:** November 2018
- **Category:** custom for buyer

MODELED PERFORMANCE DATA

- **HERS Index:** without PV 44
- **Annual Energy Costs:** without PV \$1,850
- **Annual Energy Cost Savings:** (vs typical new homes) without PV \$1,900
- **Annual Energy Savings:** without PV 15,700 kWh, 100 CCF
- **Savings in the First 30 Years:** \$90,700

CONTACT

Emily Meadows
330-417-6536
emeadows@charishomes.com

KEY FEATURES

- **Walls:** ICF, 11" R-22 total: 2.5" EPS, 6" steel-reinforced concrete, 2.5" EPS, ½" drywall.
- **Roof:** Hip roof; engineered 24" o.c., 7/16" OSB sheathing, synthetic felt, rain-and-ice guard in valleys and eaves, 4" ridge vent, 30-year shingles, 1.5" aluminum drip edge, 1-ft overhangs.
- **Attic:** Vented attic; 16" R-50 blown cellulose, 3" R-20 closed-cell spray foam on top plates; R-20 blown cellulose in garage attic.
- **Foundation:** Insulated basement, R-20 total: 11" ICFs, waterproof membrane, concrete footers with integral interior and exterior drainage system.
- **Windows:** Triple-pane, argon-filled, vinyl double-hung frames, U=0.17, SHGC=0.21.
- **Air Sealing:** 1.41 ACH 50
- **Ventilation:** ERV, MERV 11 filter.
- **HVAC:** Combined heat and hot water with .95 EF gas tankless boiler, hydrocoil and small-diameter high-velocity ducts, radiant floor heat in basement; 16.3 SEER heat pump AC.
- **Hot Water:** Combi boiler, 0.95 EF; central manifold with PEX; smart recirc. pump.
- **Lighting:** 100% LED, motion sensors, transom windows, daylighting.
- **Appliances:** ENERGY STAR refrigerator, dishwasher, microwave drawer.
- **Solar:** Solar ready.
- **Water Conservation:** EPA WaterSense fixtures.
- **Energy Management System:** Wi-Fi-enabled smart thermostat.
- **Other:** Electric vehicle charging; zero clearance shower and thresholds; no-VOC paints, low-VOC sealants and glues; formaldehyde-free hardwood, plywood, adhesives.

