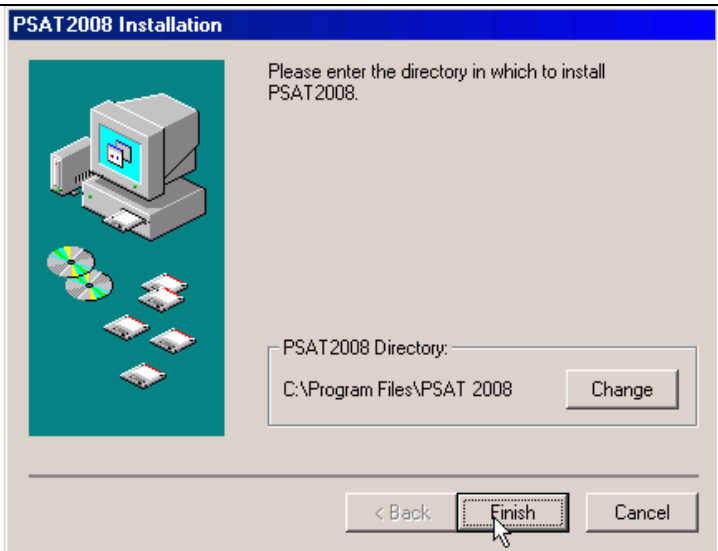


PSAT2008 Installation Instructions

This document provides the procedure for installation of PSAT2008. It follows standard installation methods, and normal users will find the process routine.

In the installation folder, there will be a pair of files, DATA.001 and SETUP.EXE (the .EXE suffix will not appear for users whose Windows folder options are set to hide extensions for known file types)

1. Double-click on the SETUP program. The window at right will appear. Click the "Finish" button.



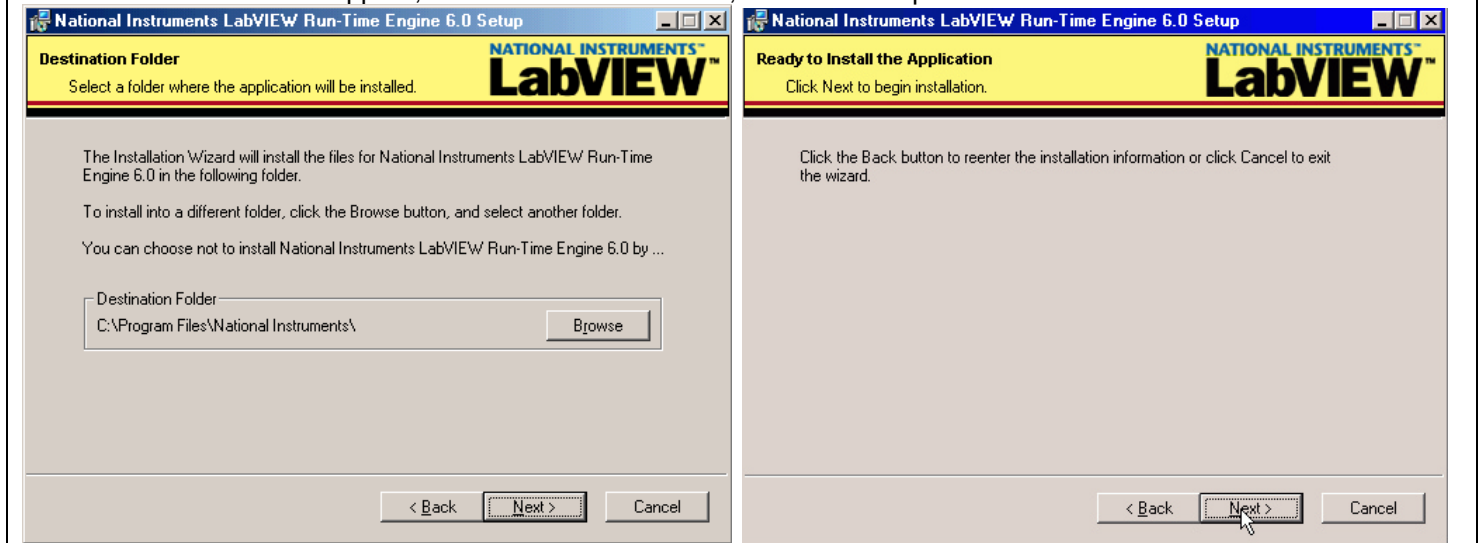
2. Installation of PSAT2008 and ancillary files will proceed. When finished, the window at right will appear. Click "OK".



3. A second installation process, which will install the National Instruments LabVIEW Run-Time Engine, begins automatically, and the window below will appear. Click "Next".



4. Two more windows will appear, as shown below. In each, click “Next” to proceed.



5. At the conclusion of the LabVIEW Run-Time Engine, the window at right will appear. Click “Finish”



A window with a listing of shortcuts, like that at the right, will appear on the desktop. For users of the PSAT2004 program with saved logs and summary files that you would like to have available for retrieval and use in PSAT2008, read and follow the instructions in the Conversion readme – 2004 to 2008 file.

NOTE: You do NOT need to uninstall PSAT2004. It can continue to be used after the PSAT2008 installation.

