

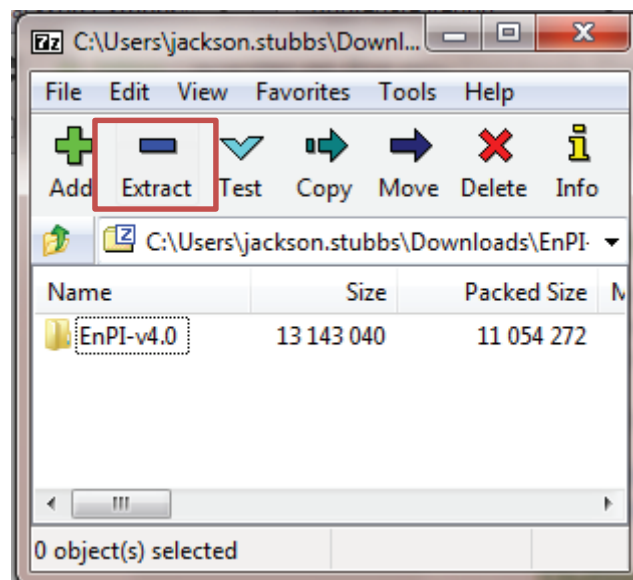
EnPI V4.0 Installation and Uninstallation Instructions

Installation Instructions

The latest version of the EnPI Tool has been developed as an Excel Add-In and needs to be installed to run. Once installed, an “EnPI” tab will appear at the top of any Excel workbook. The installation method for users with Microsoft Excel 2007 varies slightly from the method for users with Microsoft Excel 2010/2013. Please find the steps for installing the tool below.

Extracting the program files to your computer

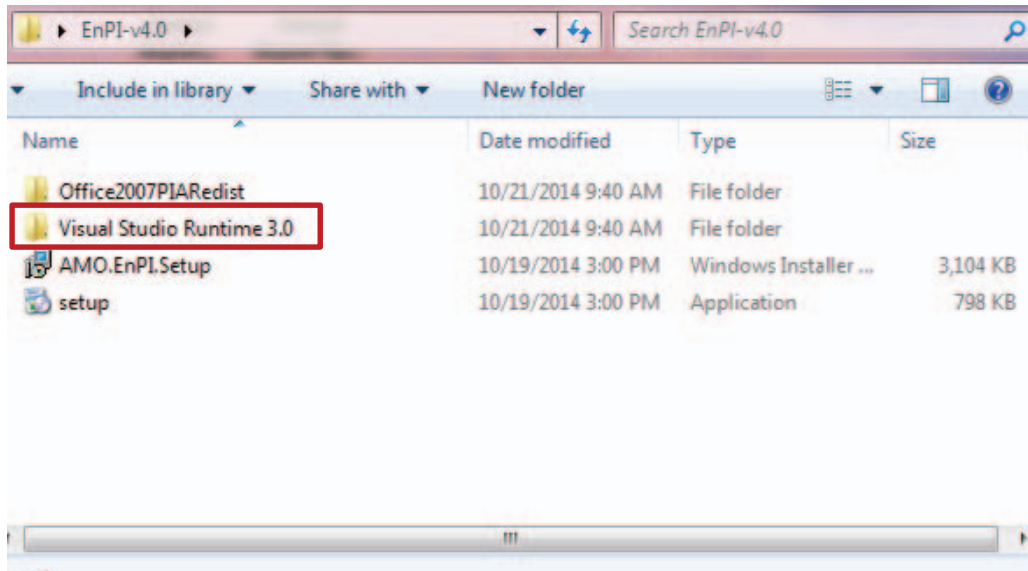
1. Once you have clicked the tool download link on the EnPI eCenter page and opened the download, you will need to extract the download files to your computer.
2. Select the EnPI-v4.0 file, and select “Extract”.



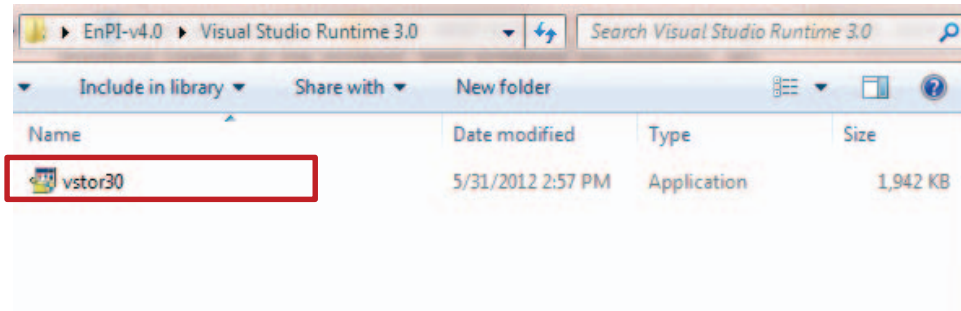
3. In the next screen, select the folder you would like to save the file to and select “ok”. Remember where the file is saved, as you will need to navigate to this folder on the next step.

Installing Microsoft Visual Studio Runtime 3.0

1. After extracting the file to a location on your computer, you must install Microsoft Visual Studio Runtime 3.0. In the EnPI-v4.0 folder, navigate to the Visual Studio Runtime 3.0 folder.



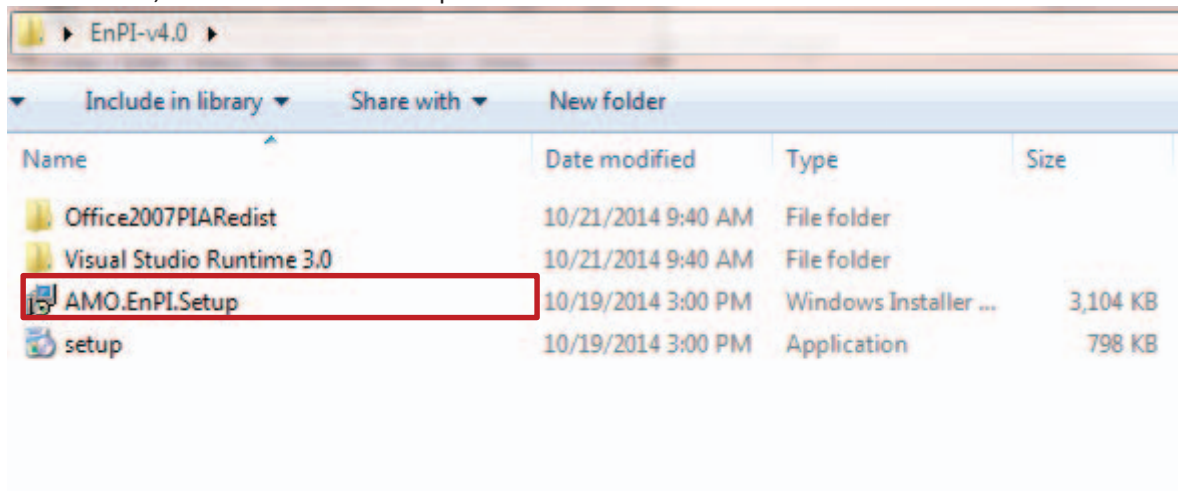
2. Open the folder and run the installer "vstor30"



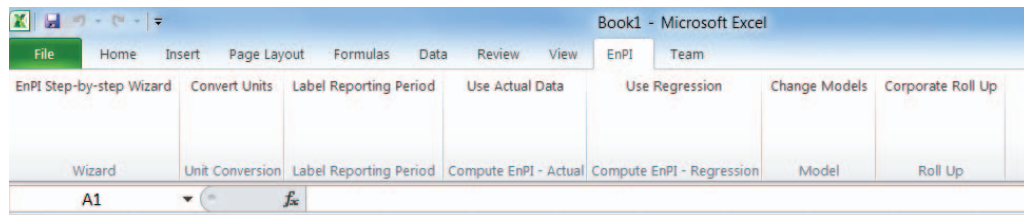
3. If the install completes without error, navigate back to main folder and proceed with the installation of the tool.

If installing from system with Office 2010 or Office 2013

1. In the folder, select "AMO.EnPI.Setup" and follow on screen instructions



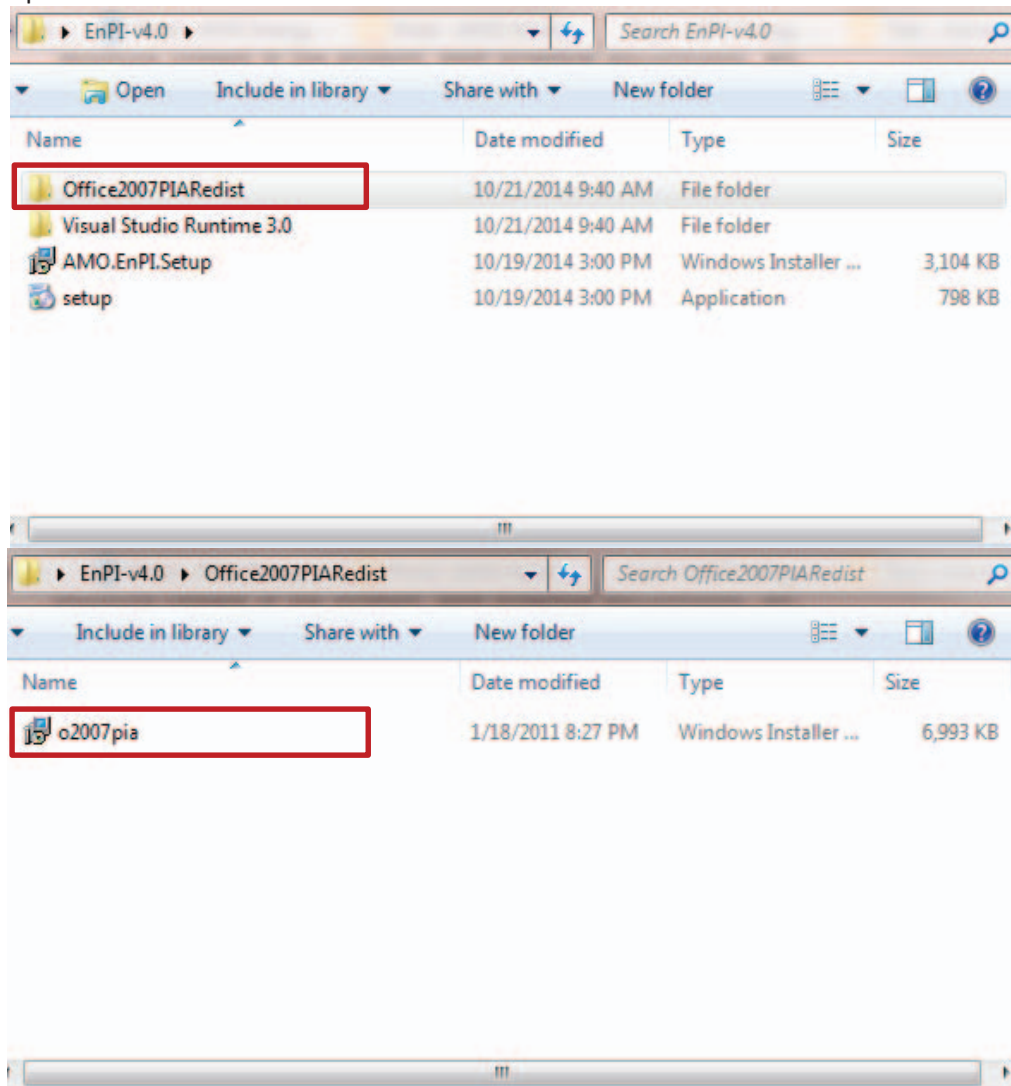
2. If the installer completes without error, the installation should be complete and you can now open excel. The add-in will appear as a tab at the top of your Excel file. Click on “Use Regression” or “EnPI Wizard” to begin.



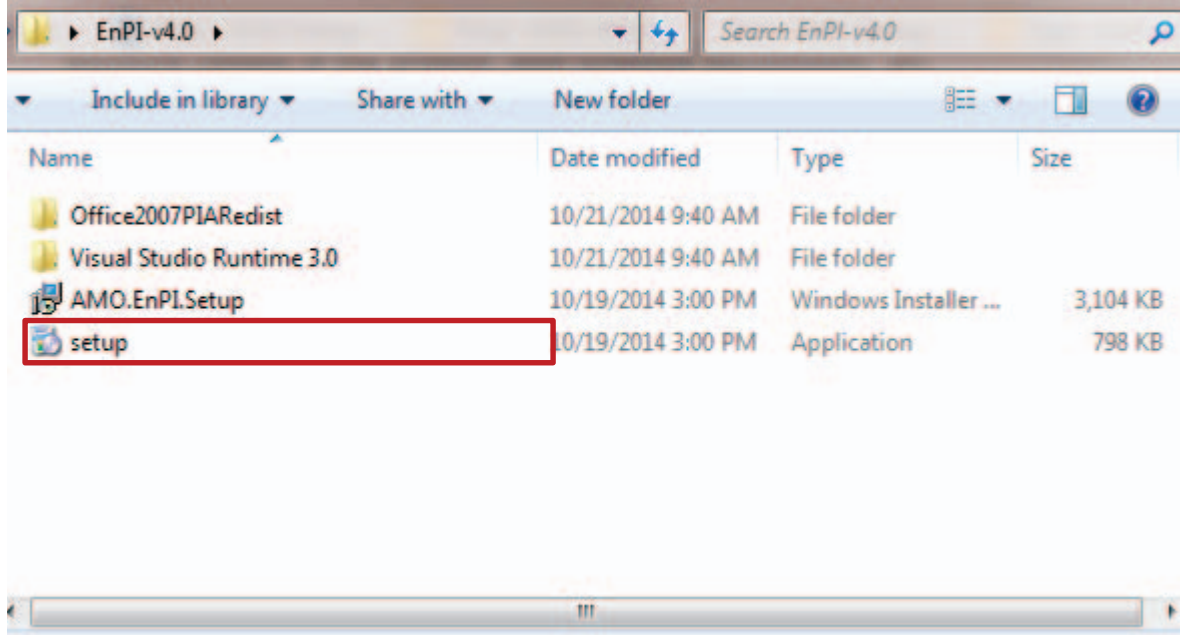
Please Note: When opening excel for the first time after installing you may be prompted that the software is from an unknown publisher, simply select continue.

If installing on a system with Office 2007

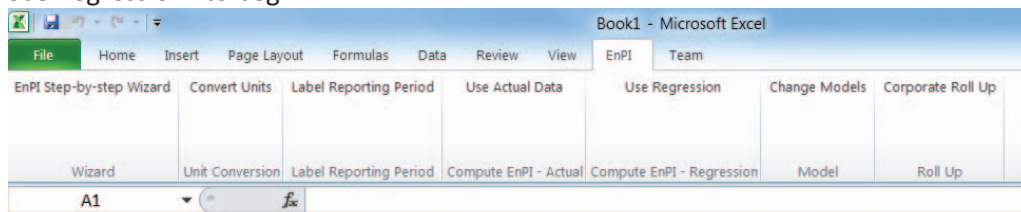
1. In the EnPI-v4.0 folder, navigate to the “Office2007PIARedist” folder and run the installer “o2007pia”.



2. If the install completes without error, go back to the main folder and run “setup” and follow on screen instructions.

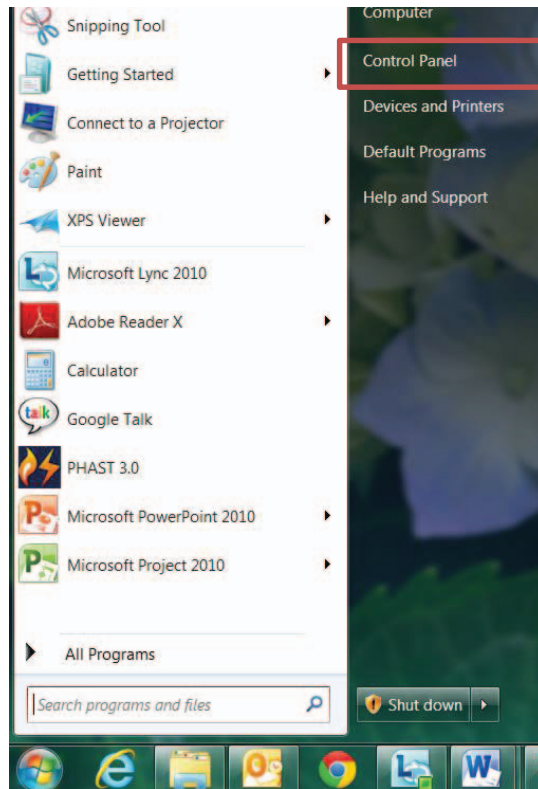


3. If the installer completes without error, the installation should be complete and you can now open excel. The add-in will appear as a tab at the top of your Excel file. Click on “EnPI Wizard” or “Use Regression” to begin.

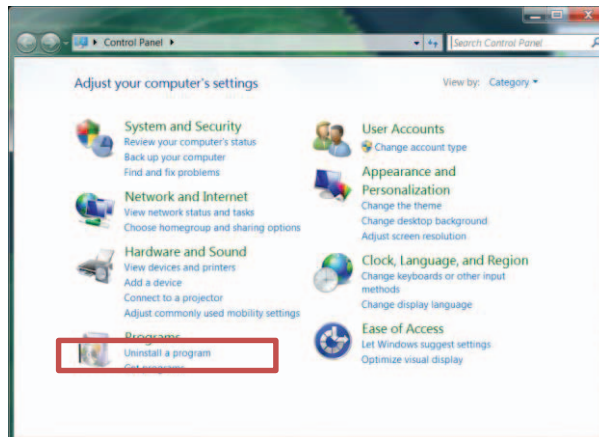


Un-Installation Instructions

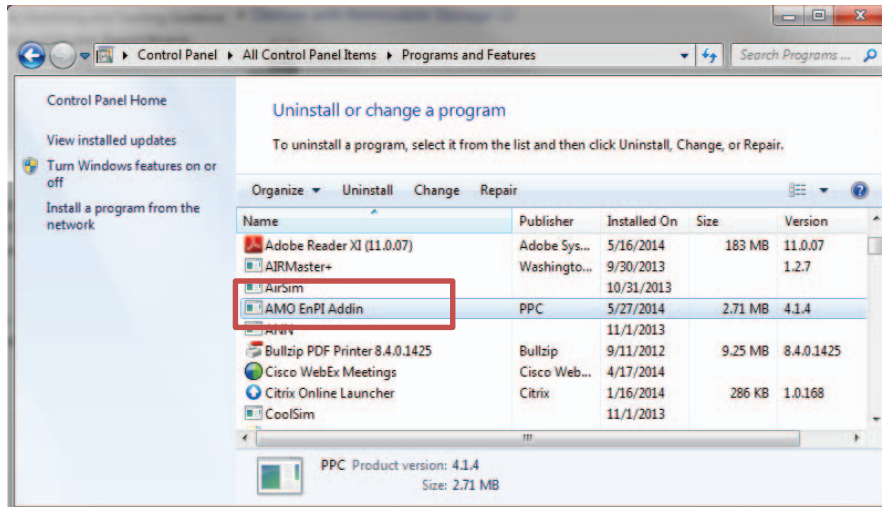
1. Open your control panel through your start menu.



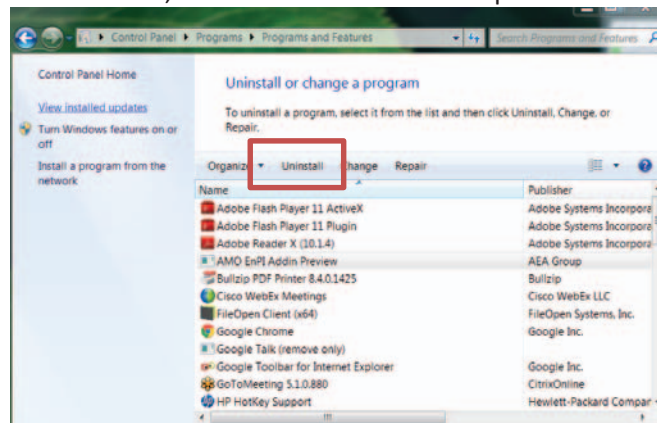
2. In your control panel, select “Uninstall Programs”



3. In the “Uninstall or change a program” box, select “AMO EnPI Addin”



4. After selecting “AMO EnPI Addin”, select “Uninstall” at the top



If you have difficulty installing or uninstalling the program, please contact the AMO eCenter Help Desk at AMO_ToolHelpDesk@ee.doe.gov.