

West Valley Demonstration Project UPDATE

Daniel Way
Decontamination and Decommissioning Manager

West Valley Cleanup Alliance

May 27, 2026



Safety Stats

Metric	12-Month Rolling Average
Total Recordable Cases (TRC)	0.00
Days Away Restricted or Transferred (DART)	0.00
Last Lost Time Case Recordable	None
Last Recordable Injury	None





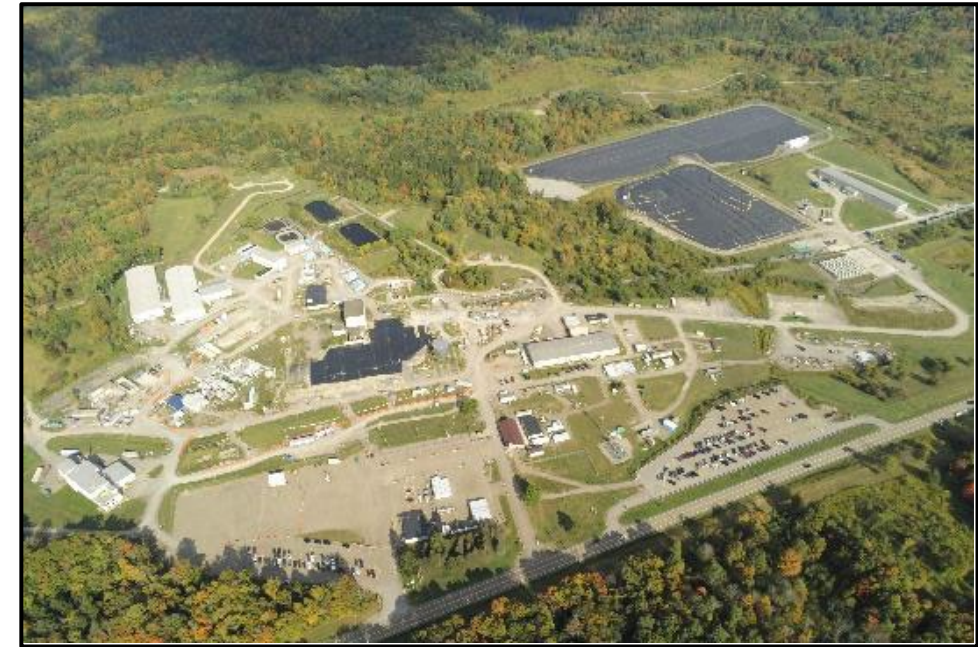
U.S. DEPARTMENT *of* ENERGY

Office of Environmental Management

Cleanup Activities

Phase 1B D&D Scope – Near term scope

- Waste Management area 1 (WMA-1)
 - Soils characterization in WMA-1 (Phase 3)
 - Utility reroute planning
 - Soil excavation planning & retention wall planning
 - Start slab demolition
- Plant Ventilation Unit – filter replacement
- HLW trench piping removal
- Demolition of Replacement Ventilation Unit (RVU) and Fuel Receiving and Storage facility (FRS)
- Tank Farm pump removal and disposal
- Safeguards and security, Environmental monitoring Surveillance and maintenance, Support activities



Waste Management Area-1 (WMA-1) Phase 3 Radiological Sampling



Phase 3

Retrieving samples to characterize the soil for constructing a retention wall (needed for excavation)

Note: Completed 28 holes in Phase 1 and 18 holes in Phase 2; and will bore 18 holes in Phase 3 (5 of 18 completed)



Permanent Ventilation Unit (PVU) Filter Changeout



Removal of a South Roughing Filter



Workers remove lower filter into a box
(Cart used for transferring filter box)

Roughing Filters – removes larger particulates from the air



PVU Filter Changeout (Cont.)



South Upper Roughing Filter Chamber



Second Bank HEPA Filter

COMPLETED: All 12 roughing filters and 24 high-efficiency particulate air filters removed and replaced



High-Level Waste Trench - Pipe Removal (Completed)



HLW Pipe Trench removal operations



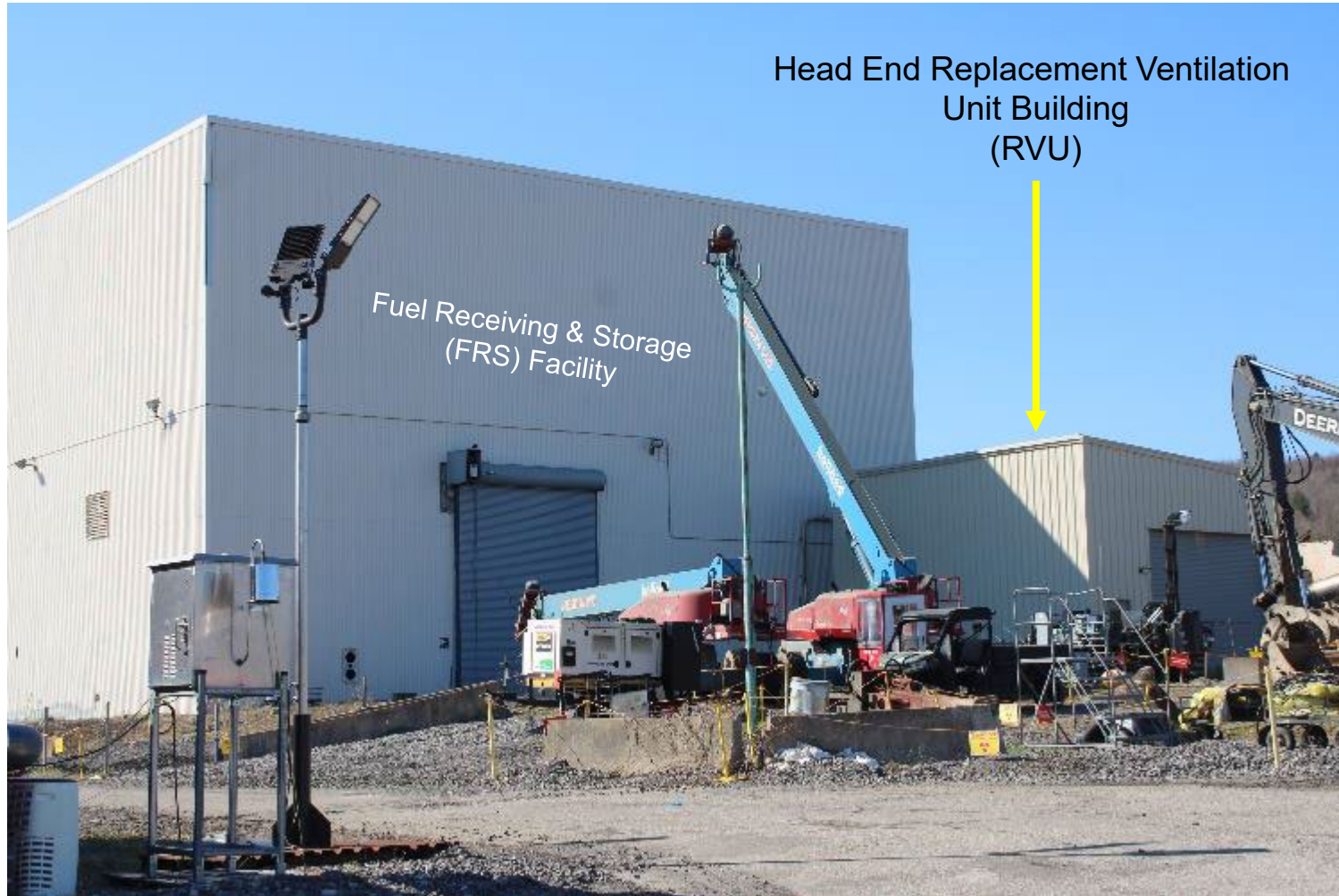
Pipe cutting with support outside work area

All piping removed, packaged, and trench covered with concrete lids and a sealant

Based on calculations, employees in the trench wear respirators to protect them from the potential for airborne releases and contamination.



Head End Replacement Ventilation Unit Building



Removal of Replacement Ventilation Unit (Cont.)



Loading the first RVU into a waste container



Replacement Ventilation Unit Building Demolition



“First Bite” on the demolition of the RVU Building



Replacement Ventilation Unit Building Demolition (Cont.)



Demolition of RVU Building



Replacement Ventilation Unit Building Demolition (Cont.)



Before and After RVU Building Demolition



Other Work Activities

- Focused on design and planning for major work scopes in Phase 1b contract:
 - Continuing work on WMA-1 utility re-route by completing *Functional Requirement Documents, designs and field work document development, procurements to support reroutes
 - Continue WMA-1 excavation designs and planning
 - Work planning and preparations for FRS demolition and ancillary building slab demolitions in WMA-1
 - Designing and planning activities to support the Tank Farm pump removals (13 pumps)

*Starting point, defines the function of the engineering design



QUESTIONS



U.S. DEPARTMENT *of* ENERGY

Office of Environmental Management