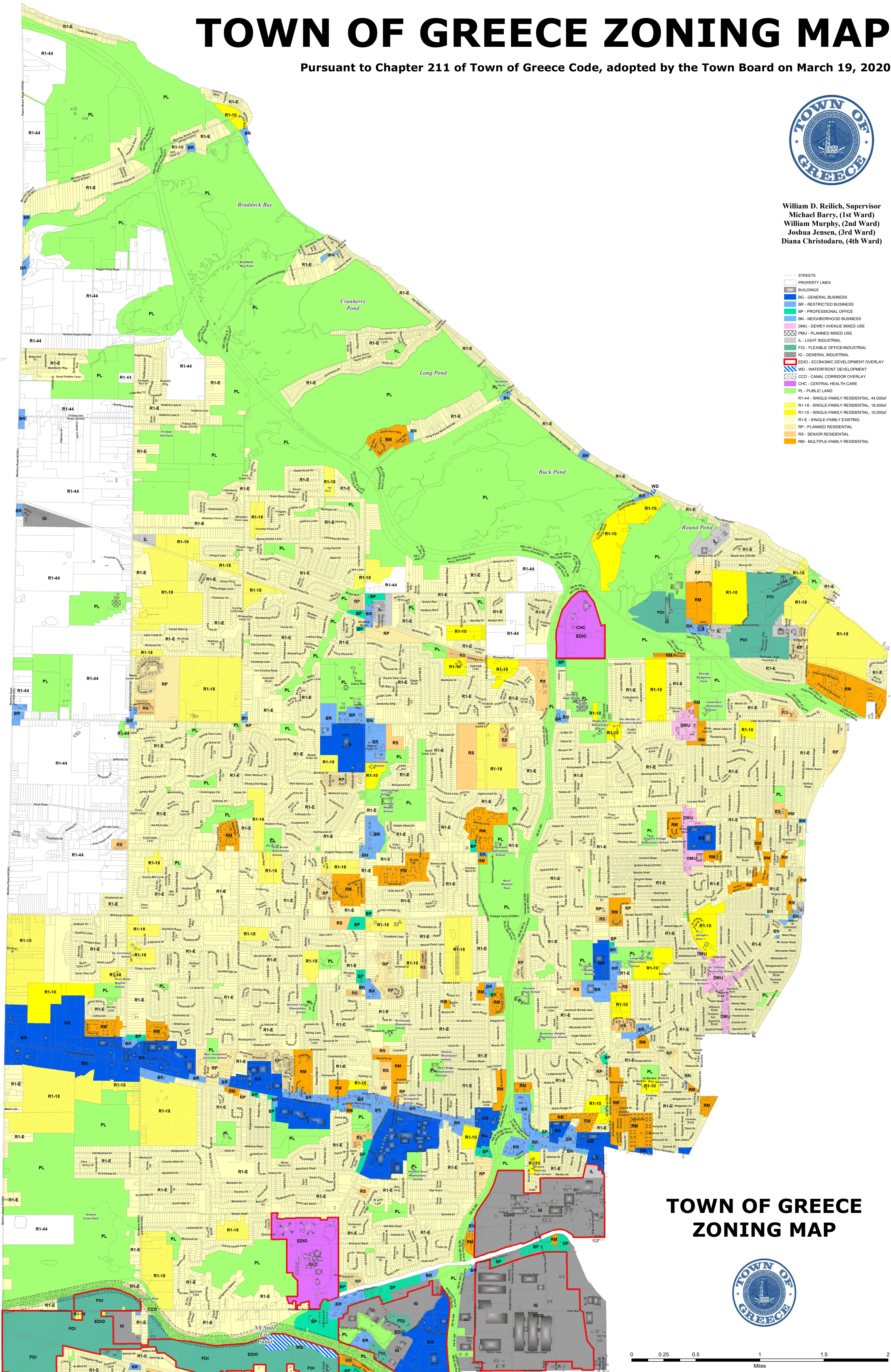


TOWN OF GREECE ZONING MAP

Pursuant to Chapter 211 of Town of Greece Code, adopted by the Town Board on March 19, 2020



William D. Reilich, Supervisor
Michael Barry, (1st Ward)
William Murphy, (2nd Ward)
Joshua Jensen, (3rd Ward)
Diana Christodoro, (4th Ward)



- STREETS
- PROPERTY LINES
- BUILDINGS
- BG - GENERAL BUSINESS
- BR - RESTRICTED BUSINESS
- BP - PROFESSIONAL OFFICE
- BN - NEIGHBORHOOD BUSINESS
- DMU - DEWEY AVENUE MIXED USE
- PMU - PLANNED MIXED USE
- IL - LIGHT INDUSTRIAL
- FOI - FLEXIBLE OFFICE/INDUSTRIAL
- IG - GENERAL INDUSTRIAL
- EDIO - ECONOMIC DEVELOPMENT OVERLAY
- WD - WATERFRONT DEVELOPMENT
- CCO - CANAL CORRIDOR OVERLAY
- CHC - CENTRAL HEALTH CARE
- PL - PUBLIC LAND
- R1-44 - SINGLE-FAMILY RESIDENTIAL, 44,000sf
- R1-18 - SINGLE-FAMILY RESIDENTIAL, 18,000sf
- R1-10 - SINGLE-FAMILY RESIDENTIAL, 10,000sf
- R1-E - SINGLE-FAMILY EXISTING
- RP - PLANNED RESIDENTIAL
- RS - SENIOR RESIDENTIAL
- RM - MULTIPLE-FAMILY RESIDENTIAL

TOWN OF GREECE ZONING MAP



0 0.25 0.5 1 1.5 2 Miles