



U.S. DEPARTMENT OF
ENERGY

OFFICE OF
**ENVIRONMENTAL
MANAGEMENT**

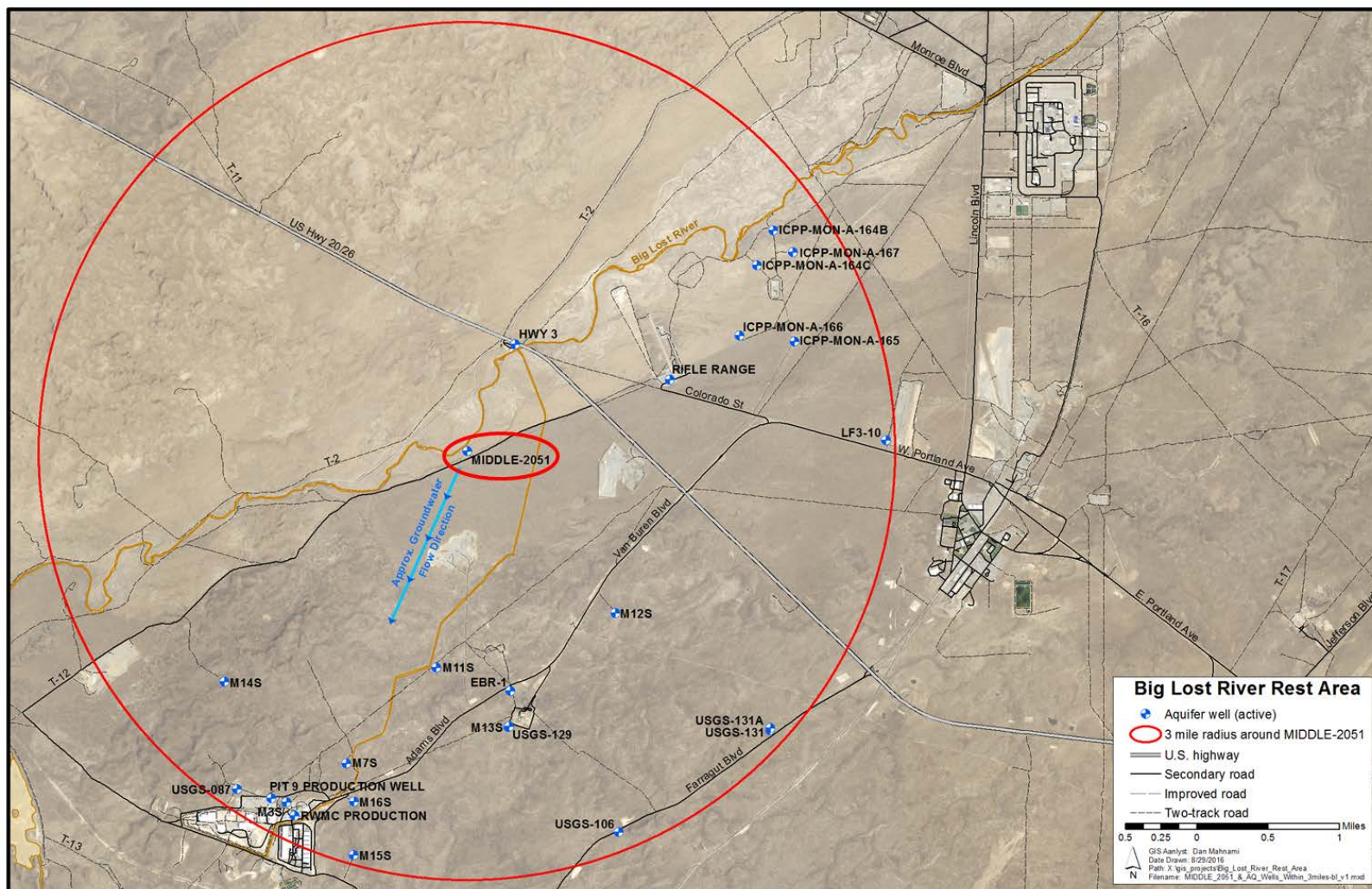
Well MIDDLE-2051 Update

Presentation to Citizens Advisory Board
Nolan Jensen
Project Manager
Idaho Cleanup Project
June 22, 2017

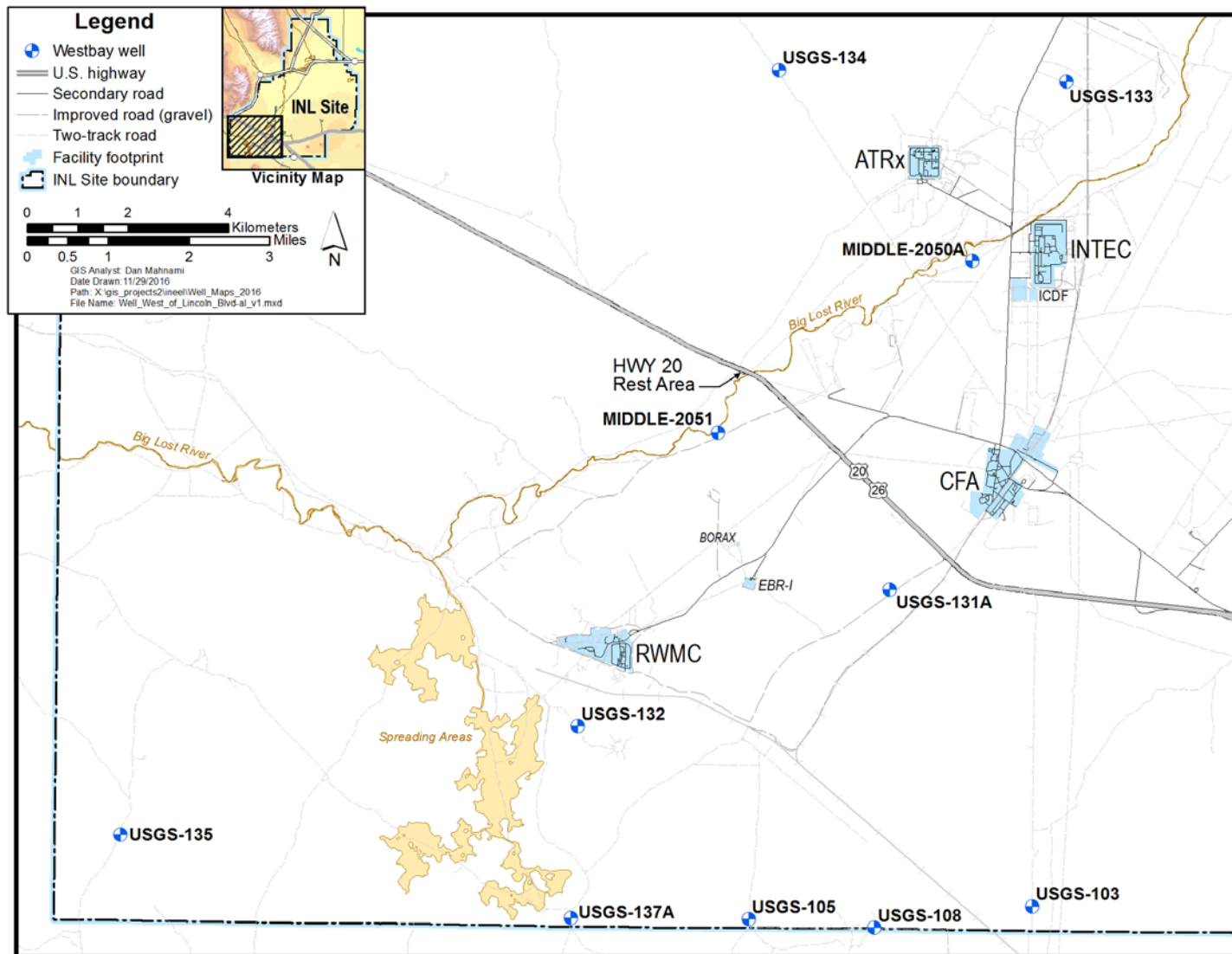
Well MIDDLE-2051



Well MIDDLE-2051

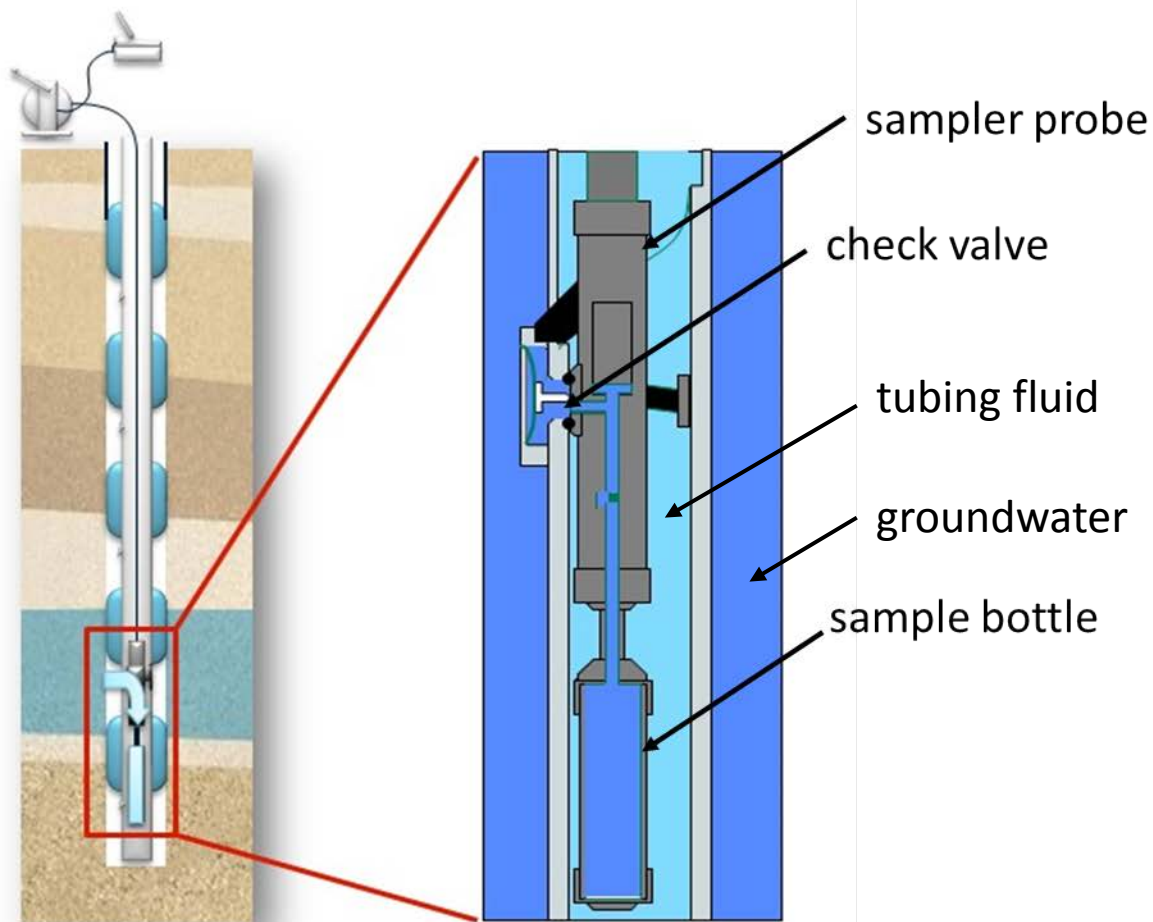


Location of 11 Westbay Wells



Westbay Well Details

Westbay Fluid Sampling



Downhole Camera Images

Well MIDDLE-2051 sampling port (looking down)



Downhole Camera Images

Well MIDDLE-2051 sampling port (looking sideways at check valve)



Tubing Fluid Lab Results

PCE in Westbay well tubing fluid^a (USGS lab results)

| Westbay Well | Year Installed | PCE Concentration (µg/L) | Sample Date |
|--------------|----------------|--------------------------|-------------|
| MIDDLE-2051 | 2005 | 662 | 7/19/16 |
| MIDDLE-2050A | 2005 | 829 | 9/20/16 |
| USGS-132 | 2006 | 0.52 | 9/20/16 |
| USGS-137A | 2012 | 0.20 | 9/20/16 |

Note: Drinking Water Standard for PCE is 5 µg/L

^a The tubing fluid is isolated within the Westbay well, and does not come in contact with the groundwater.

Fire Station Well

