
Idaho Cleanup Project

Mission-Relevant Facility Transfers

Jim Cooper
Department of Energy
Idaho Operations Office

September 14, 2011



EM *Environmental Management*

Facility Transfer Overview

- Facility transfer supports INL 10 year site plan and EM 2015 vision
 - 10 Year site plan goal to “transform the INL to meet DOE national nuclear R&D goals
 - EM 2015 vision is to reduce EM legacy footprint by 90% by 2015



EM *Environmental Management*

Initial Actions to support Facility Transfer

- Identify mission relevant facilities
 - Facilities under consideration are located at INTEC
- Develop Project Execution Plan
 - DOE-ID submitted plan to NE and EM for review and comment



Idaho Nuclear Technology and Engineering Center

G07-1892-02



EM Environmental Management

Proposed Facilities

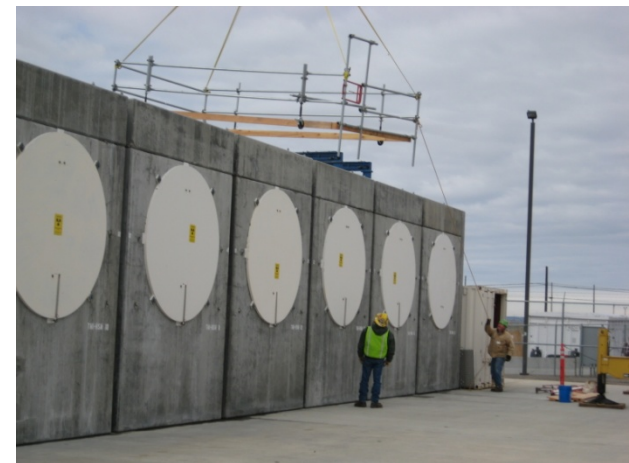
- CPP – 684 Remote Analytical Laboratory
- No current EM mission
- Hazard Category 3 Nuclear facility
 - 13,100 ft² Lab building
 - Hot Cell for High Rad Sample Analysis
 - Rad Samples enter hot cell via Cask transfer port or pneumatic system from CPP-666
 - Chemical Hoods for non-radiological analysis



EM *Environmental Management*

Proposed Facilities

- CPP – 1774 TMI-2
Independent Spent Fuel
Storage Installation (ISFSI)
- Current EM mission
 - Dry Storage of TMI-2
Spent Nuclear Fuel
- NRC Licensed fuel storage
facility
 - Routine maintenance,
Hydrogen Gas Sampling,
etc....



EM *Environmental Management*

Proposed Facilities

- Fort St. Vrain ISFSI
- Current EM mission
 - Dry Storage of Fort St. Vrain Spent Nuclear Fuel
- NRC Licensed fuel storage facility
 - Facility is located in Colorado
 - NRC License extended to 2031



EM *Environmental Management*

Proposed Facilities

- CPP-2707 Cask Pad
- Current EM mission
 - Dry Storage of Spent Fuel
- Hazard Category 2 Nuclear Facility
 - Routine spent fuel monitoring – Hydrogen gas sampling, physical inspections etc...



EM *Environmental Management*

Proposed Facilities

- CPP-749 Peach Bottom Fuel Storage Facility
- Current EM mission
 - Dry Storage of Spent Fuel
- Hazard Category 2 Nuclear Facility
 - Routine spent fuel monitoring – Hydrogen gas sampling, physical inspections etc...



EM *Environmental Management*

Proposed Facilities

- CPP-666 FDP/FAST Facility
- Current EM mission
 - Spent Fuel Storage and shipment, Navy returns, EBR-II returns and TRA receipts
 - Remote Handled TRU Waste Program
- Hazard Category 2 Nuclear Facility
 - 152,000 ft² Spent fuel storage facility.
 - Fuel storage pool and hot cell facility



EM *Environmental Management*

Proposed Facilities

- CPP-603 Irradiated Fuel Storage Facility
- Current EM mission
 - Dry Storage of Spent Fuel
- Hazard Category 2 Nuclear Facility
 - Routine spent fuel monitoring, FRR/DRR fuel receipts, building maintenance



EM *Environmental Management*

Project Status

- Revising Project Plan based on Office of Environmental management and Nuclear Energy comments.
- Developing Facility Transfer schedule to support EM and NE programmatic requirements:
 - CPP-684 (RAL) identified as first facility to transfer to support INL mission need.
 - RAL is the prototype transfer to refine the transfer process, lessons learned will be added to the Project Plan for future transfers.
 - Other facilities transfer dates are being evaluated to ensure EM customer mission is not effected,
 - Navy Fuel Returns
 - RH-TRU
 - EBR-II transfers
- Identifying required INTEC infrastructure to be included in the Facility Transfer Project.



EM *Environmental Management*

Other Project Considerations

- Establishing budget needs for facility inspections, and corrective maintenance (roofs, mechanical systems etc...) as part of the transfer.
- Developing process to ensure Critical Missions are not effected by the transfers, including workforce continuity.



EM *Environmental Management*

Facility Transfer Project Summary

- Project Plan developed
 - Revision in progress to address HQ comments and EM/NE mission needs.
- RAL Facility is lead facility for transfer, lessons will be added to Project Plan
- EM and NE are working closely to ensure transfers have little to no impact on critical mission.



EM *Environmental Management*