

# Sludge Repackaging Project

Idaho Cleanup Project Citizens' Advisory Board  
November 14, 2012



**EM** *Environmental Management*

safety ❖ performance ❖ cleanup ❖ closure

[www.em.doe.gov](http://www.em.doe.gov)



# WMF-1617 (ARP V)



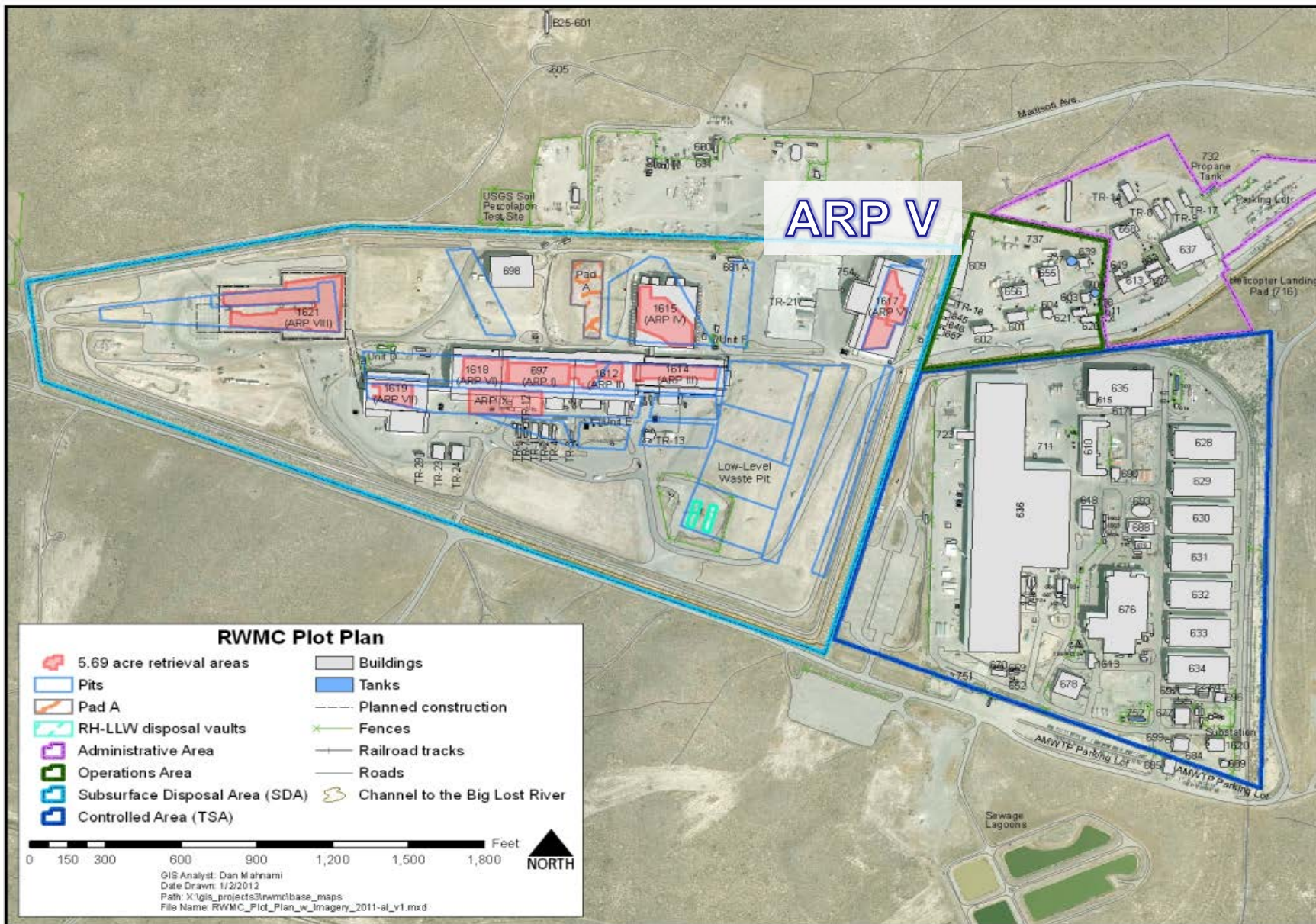
**EM** *Environmental Management*

safety ❖ performance ❖ cleanup ❖ closure

Photos courtesy of Mr. Steve Karns, DOE Facility Representative

[www.em.doe.gov](http://www.em.doe.gov)





**EM Environmental Management**

safety ❖ performance ❖ cleanup ❖ closure

[www.em.doe.gov](http://www.em.doe.gov)

# Sludge Repackaging Project (SRP)

- DOE-ID has directed CH2M♦Hill Washington Group, Idaho (CWI) to use Waste Management Facility (WMF)-1617 to repackage Rocky Flats sludge drums retrieved from AMWTP to ensure achievement of regulatory milestone.
- DOE-ID has currently directed CWI to process 6,000 drums from the Advanced Mixed Waste Project (AMWTP)



# Sludge Repackaging Project (SRP)

- WMF-1617 structure has been removed from CERCLA regulation.
- Idaho Department of Environmental Quality has issued approval of the change to RCRA permit to include WMF-1617 as the area where the treatment process will occur and WMF-698 as a storage area.
- US Environmental Protection Agency, Region 10, has approved a Toxic Substance Control Act (TSCA) Risk Based Disposal Approval request.





# Preparing WMF-1617 for SRP



Photos courtesy of Mr. Steve Karns, DOE Facility Representative



**EM** Environmental Management

safety ❖ performance ❖ cleanup ❖ closure

[www.em.doe.gov](http://www.em.doe.gov)

# Current Status

CWI has prepared the facility and equipment

CWI has performed a Readiness Assessment

- An independent team reviewed and evaluated:
  - Operations written procedures
  - Safety protocols
  - Personnel training
  - Engineering and modifications to the facility
  - RCRA compliant waste handling and inspections
- The review team also observed demonstrations of the processes to be used to repackage the sludge waste and packaging of the secondary waste generated

Drum transfer schedules have been established between  
CWI and the AMWTP contractor



**EM** *Environmental Management*

safety ❖ performance ❖ cleanup ❖ closure

[www.em.doe.gov](http://www.em.doe.gov)

# Description of Activities

1. Transfer from AMWTP
2. Receive into Airlock
3. Receive into Retrieval Enclosure
4. Open and place waste onto sorting table
5. Absorb liquid as found and perform inspection for acceptance
6. Place acceptable waste into tray
7. Transport waste in tray to Drum Packaging Station
8. Perform Visual Examination for WIPP Characterization
9. Repackage acceptable waste into a clean drum
10. Return acceptable waste to AMWTP for shipping
11. Size reduce emptied drums and place in disposal container
12. Disposition disposal containers of secondary waste





# 1. Transfer from AMWTP



**EM** Environmental Management

safety ❖ performance ❖ cleanup ❖ closure

[www.em.doe.gov](http://www.em.doe.gov)



2. Receive into Airlock
3. Receive into Retrieval Enclosure



**EM Environmental Management**

safety ❖ performance ❖ cleanup ❖ closure

[www.em.doe.gov](http://www.em.doe.gov)



4. Open drum and place waste onto sorting table
5. Absorb liquid as found

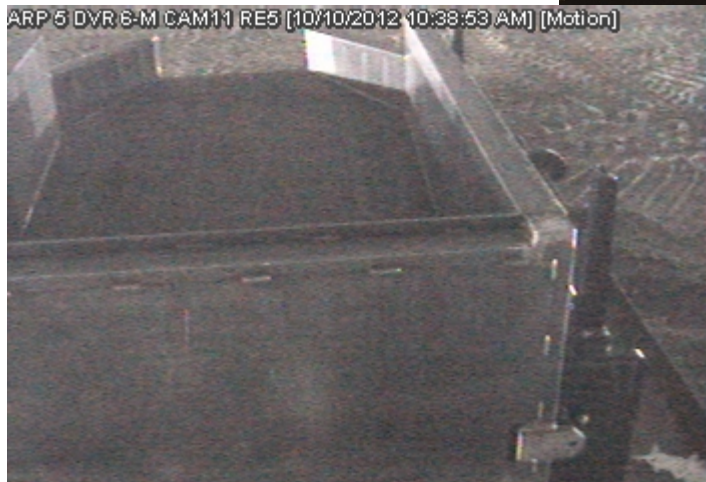
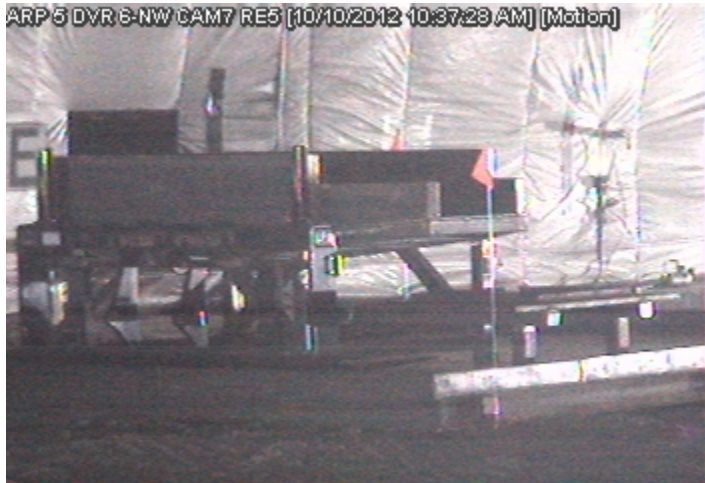


Photo courtesy of Mr. Steve Karns, DOE Facility Representative



**EM** Environmental Management

safety ❖ performance ❖ cleanup ❖ closure

[www.em.doe.gov](http://www.em.doe.gov)



4. Open drum and place waste onto sorting table
5. Absorb liquid as found



**EM** Environmental Management

safety ❖ performance ❖ cleanup ❖ closure

[www.em.doe.gov](http://www.em.doe.gov)



6. Place acceptable waste into tray
7. Transport waste in tray to Drum Packaging Station



**EM** Environmental Management

safety ❖ performance ❖ cleanup ❖ closure

[www.em.doe.gov](http://www.em.doe.gov)



8. Perform Visual Examination for WIPP Characterization
9. Repackage acceptable waste into a clean drum



**EM** Environmental Management

safety ❖ performance ❖ cleanup ❖ closure

Photos courtesy of Mr. Steve Karns, DOE Facility Representative

[www.em.doe.gov](http://www.em.doe.gov)



## 10. Return acceptable waste to AMWTP for shipping



**EM** Environmental Management

safety ❖ performance ❖ cleanup ❖ closure

[www.em.doe.gov](http://www.em.doe.gov)

## 11. Size reduce emptied drums and place in disposal container



**EM** Environmental Management

safety ❖ performance ❖ cleanup ❖ closure

[www.em.doe.gov](http://www.em.doe.gov)



## 12. Disposition disposal containers



**EM** Environmental Management

safety ❖ performance ❖ cleanup ❖ closure

[www.em.doe.gov](http://www.em.doe.gov)

# Advantages of Reuse of WMF-1617

- The original excavators and telehandlers used in ARP V operations will be reused.
- Drum packaging units have been cleaned and readied to support RCRA packaging.
- Economic use of government owned facility and equipment to expedite the removal of waste from the state of Idaho.

Thank you to Idaho DEQ and EPA Region 10 for the cooperation and expedited reviews and approvals of the necessary permits



*EM* **Environmental Management**

safety ❖ performance ❖ cleanup ❖ closure

[www.em.doe.gov](http://www.em.doe.gov)

End



**EM Environmental Management**

safety ❖ performance ❖ cleanup ❖ closure

[www.em.doe.gov](http://www.em.doe.gov)

# Back up slides



***EM Environmental Management***

safety ❖ performance ❖ cleanup ❖ closure

[www.em.doe.gov](http://www.em.doe.gov)



# Reuse of WMF-1617 (ARPV)

