



U.S. DEPARTMENT OF  
**ENERGY**

OFFICE OF  
**ENVIRONMENTAL  
MANAGEMENT**

# WIPP Update

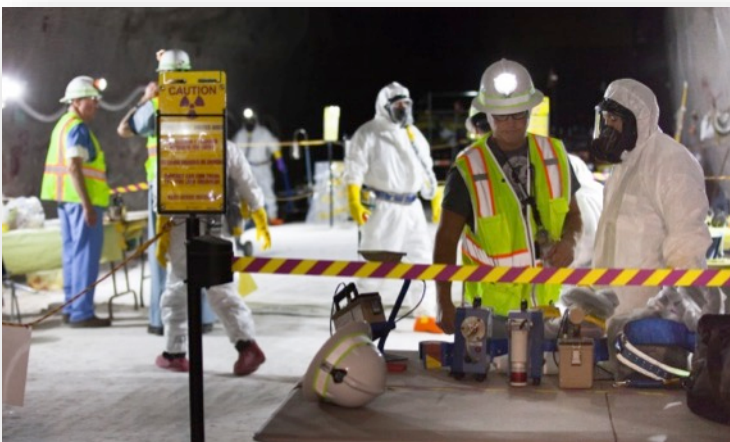
Idaho Citizens Advisory Board  
October 26, 2017



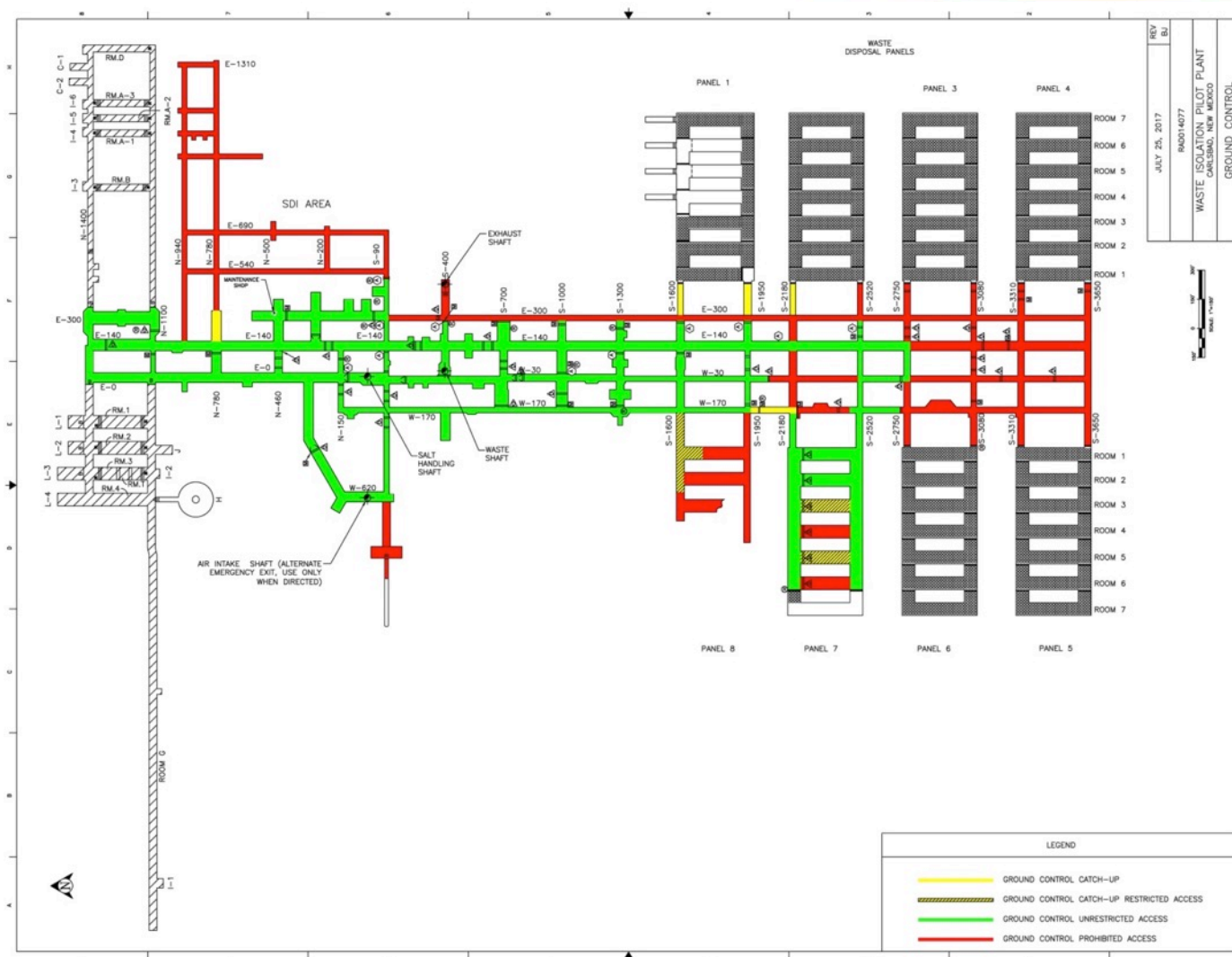


# WIPP Status

- Emplacement rates are 5-6 shipments per week.
- The goal is to continuing to ramp-up emplacements in FY18.
- Emplacement ramp-up depends on:
  - Altering Work Shifts
  - Efficiencies with operational experience
  - Adequate ventilation is available for all underground activities

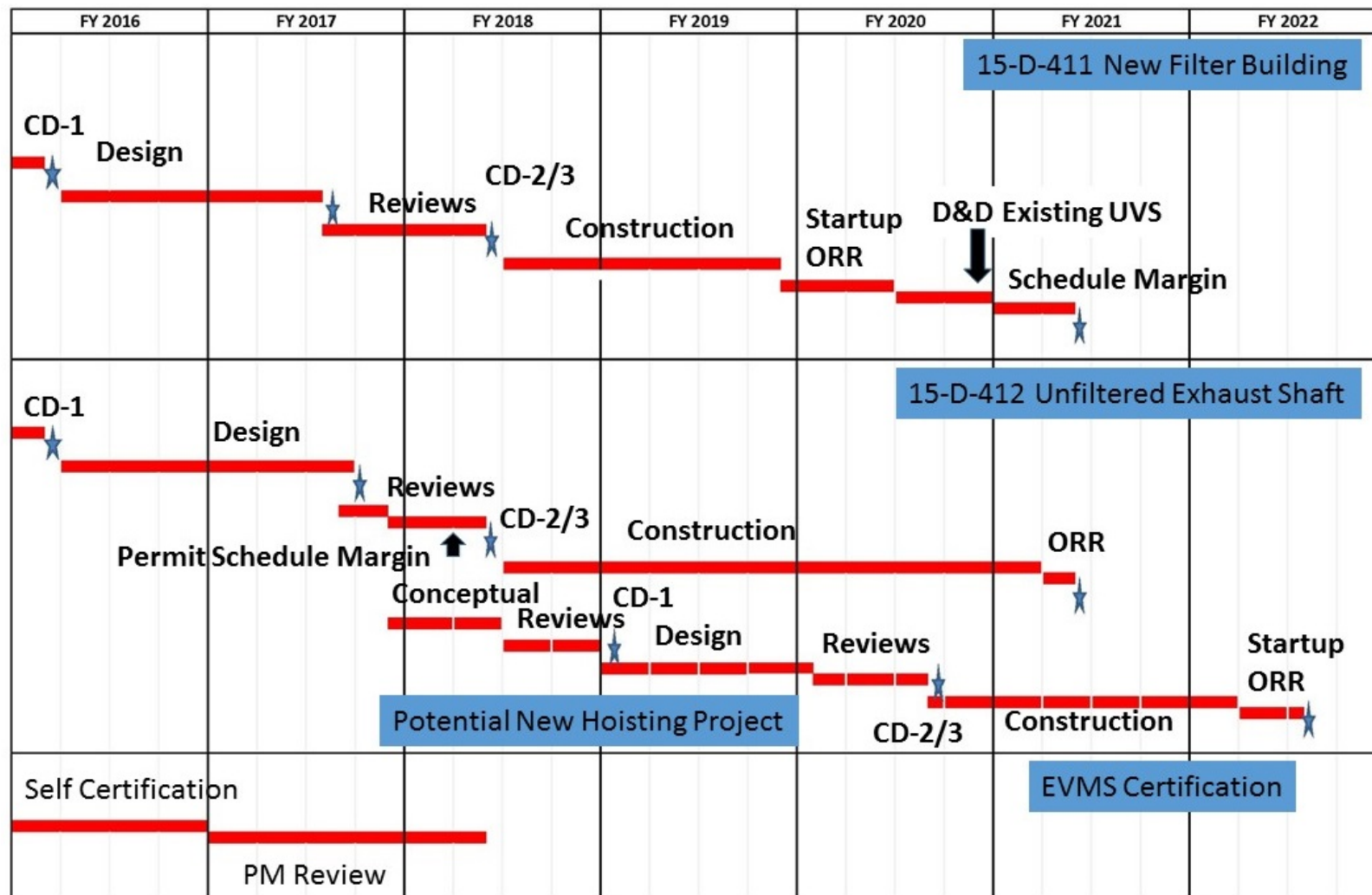


# Ground Control

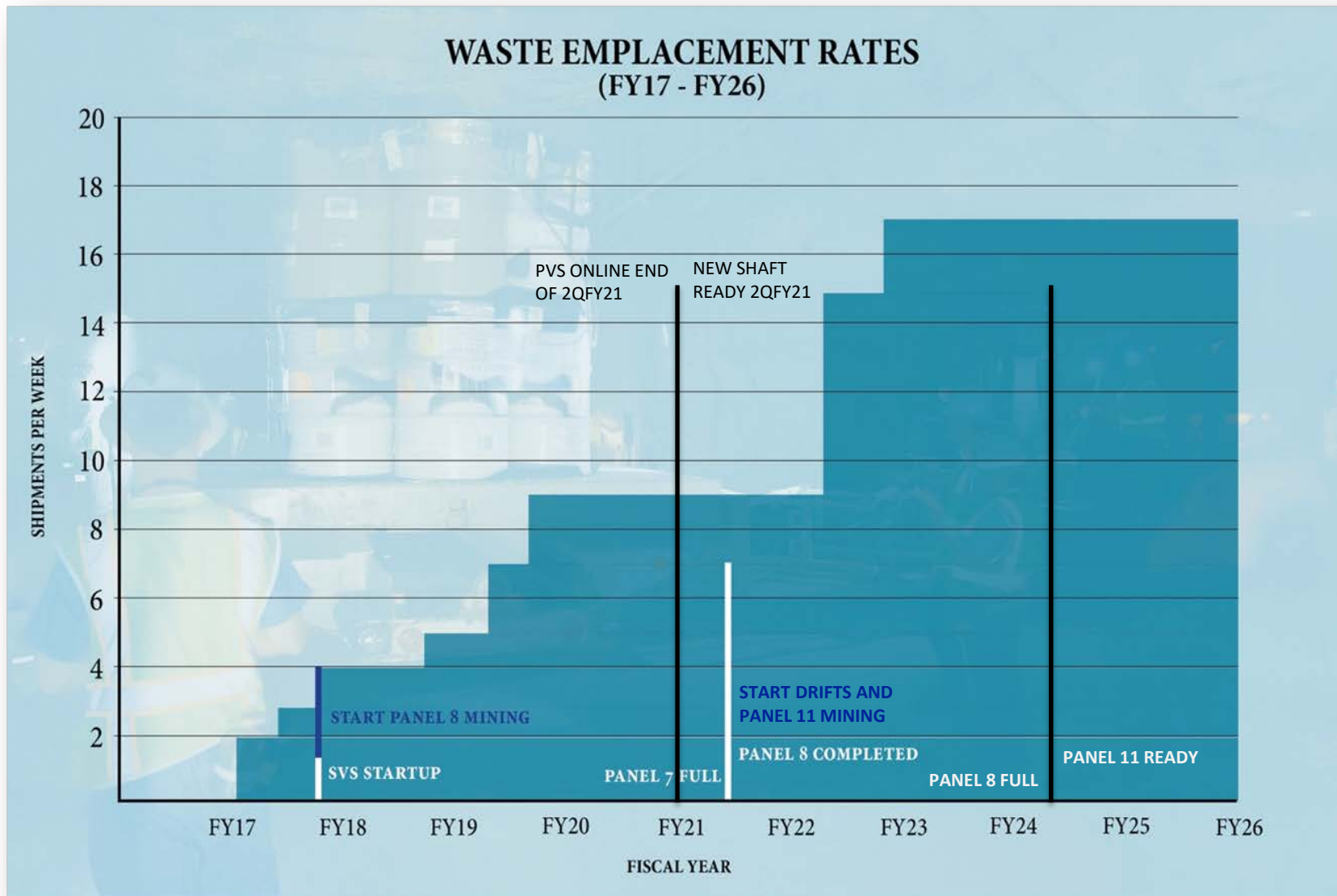




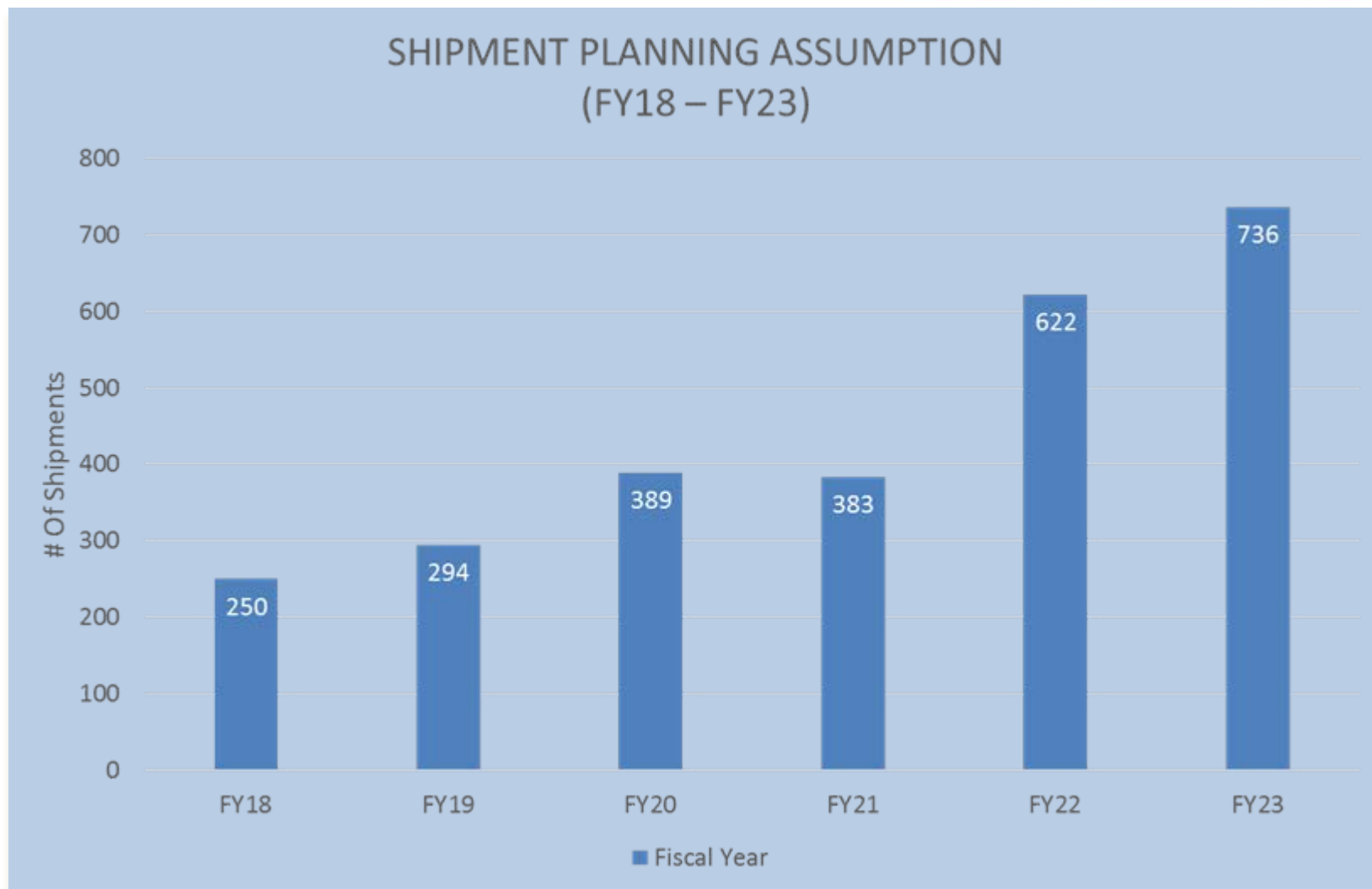
# New Mine Ventilation System



# Projected Waste Emplacement Rates FY17-26



# Shipping Assumptions



# Shipping and Emplacement Considerations

