



Idaho Cleanup Project Waste Disposition

Jim Malmo

Assistant Manager

Idaho Cleanup Project

October 24, 2019

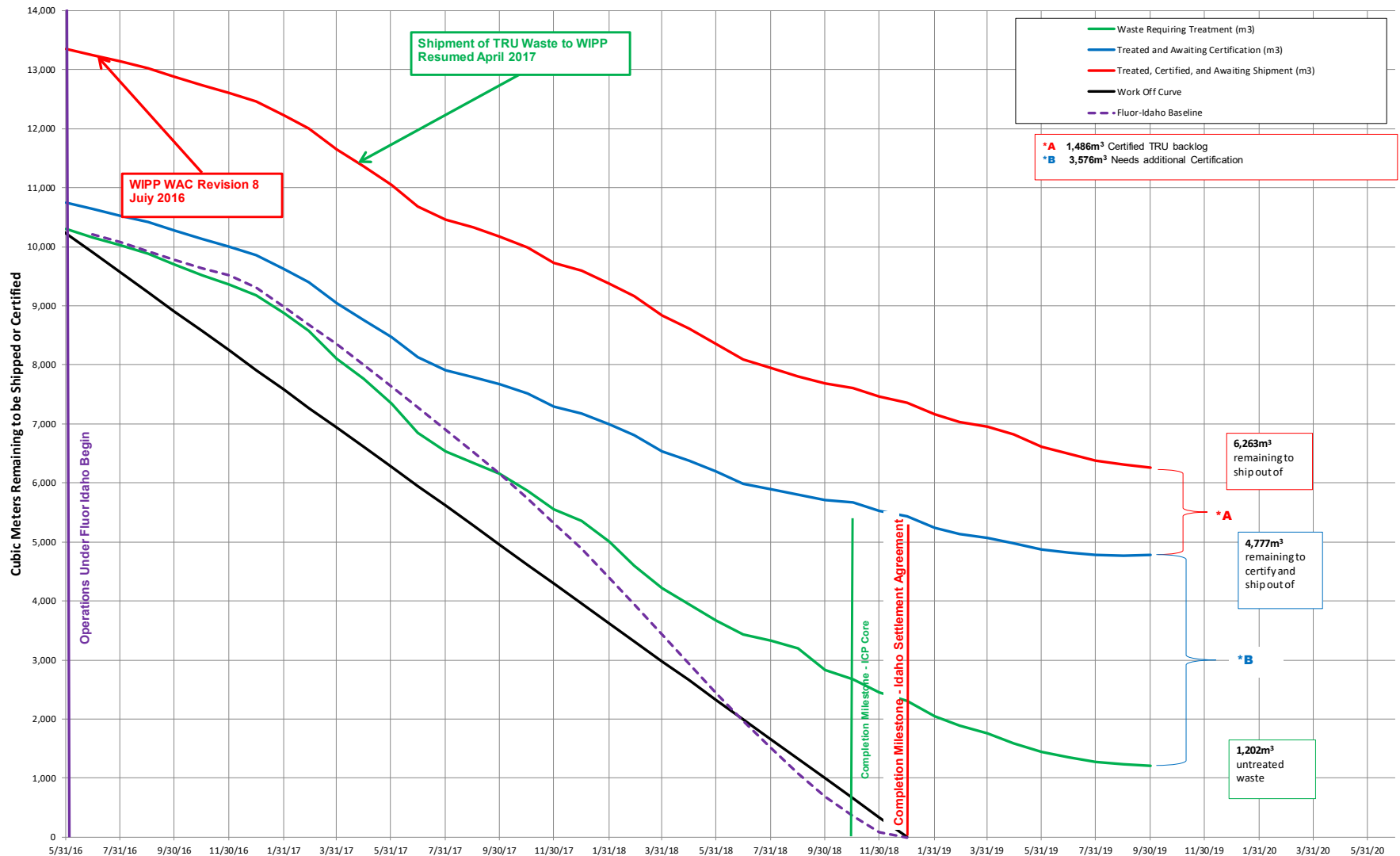


EM *Environmental Management*

safety ❖ performance ❖ cleanup ❖ closure

Idaho Cleanup Project


CH TRU Waste Status



EM Environmental Management

safety ♦ performance ♦ cleanup ♦ closure

CH TRU Waste Inventory as of September 30, 2019
Idaho Cleanup Project

Waste Type	Origin	Volume Remaining (m ³)	Amount Shipped (m ³)	Ultimate Destination	Applicable Agreements
Transuranic and Mixed Low-Level Waste 	Site operations, Rocky Flats Plant, other DOE facilities	5,666* (CH-TRU) 597* (MLLW)	45,395 (CH TRU) 14,451 (MLLW)	WIPP (CH TRU) Licensed off-site disposal site (MLLW)	Idaho Settlement Agreement, Site Treatment Plan

Accomplishments:

- Debris Waste Completed – except Bettis and squeezants
- Completed the RF-761 waste stream
- Processed remaining event drum and cleaned residual out of ARP-V
- Submitted 45 day notice of closure of ARP-V to State of Idaho DEQ
- Sludge Repackaging has started in ARP-VII
- Work force restructuring without layoffs
- Packaging for RH-TRU for disposal is underway



RF-761 waste processing in the boxline

Status:

- 526m³ ISA debris waste treatment
- 676m³ of sludge waste to be processed in ARP VII



30 gallon shielded container for RH TRU waste

Issues:

- Difficult waste streams
- Equipment failures
- Waste certification challenges

Path Forward:

- Continue treatment of CH TRU sludges and soils
- Resume certification of RH TRU waste
- Establishing an alternative transport and disposal package for RH-TRU



EM Environmental Management

safety ❖ performance ❖ cleanup ❖ closure

Idaho Cleanup Project

Sludge Repackaging



ARP V

ARP VII

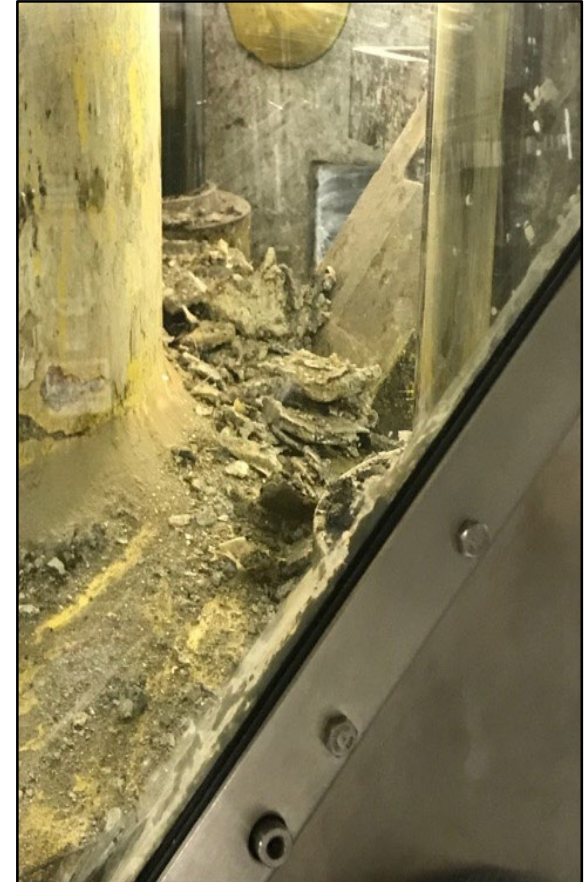


EM *Environmental Management*

safety ❖ performance ❖ cleanup ❖ closure

Idaho Cleanup Project

Super Compactor Issues



Pictures of the shroud and debris

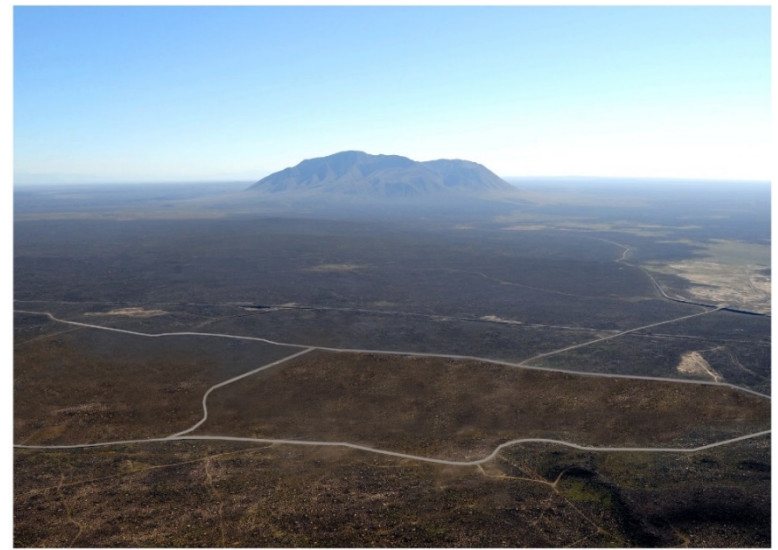


EM Environmental Management

safety ❖ performance ❖ cleanup ❖ closure

Idaho Cleanup Project

RWMC Closure Vision



2019

2028



EM *Environmental Management*

safety ❖ performance ❖ cleanup ❖ closure

Idaho Cleanup Project

RCRA Closure, Dismantlement and D&D

- RCRA strategy is being developed
- AMWTP end state will be D&D, which will drive the RCRA closure strategy

Done in a phased approach over next 6-8 years

- Phase I will be RCRA closure of the AMWTP buildings currently covered by an Interim Status Permit and the ARP-V
- Phase 2 will be RCRA closure of the treatment facility & ARP-VII and dismantlement of both the ARP –IV and V
- Phase 3 will be D&D of the 636, 676, and dismantlement of remaining ARP Structures (ARP II, III, VII, VIII, and IX)
- Phase 4 will address all remaining buildings as the waste leaves the state and complete RCRA closure and D&D of remaining AMWTP buildings and RWMC support buildings



AMWTP RCRA Closure - Phase 1



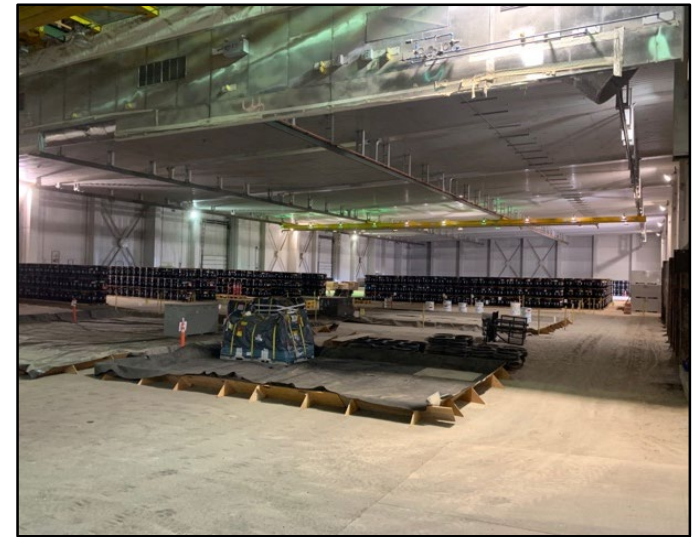
EM Environmental Management

safety ❖ performance ❖ cleanup ❖ closure

Idaho Cleanup Project

AMWTP TSA-RE (636) RCRA Closure

- Developing closure documents, including Permit Modification Request (PMR)
- 69% (3530 of 5045) drum moves from Pad 1 complete
- Remove stored equipment and spares from Pads 1,2 and R
- Developing plans to decon equipment and to perform characterization
- Actual D&D of the 636 Building will not begin until 2021



Pad 1



Pad 2



RCRA Closure and Dismantlement - Phase 2

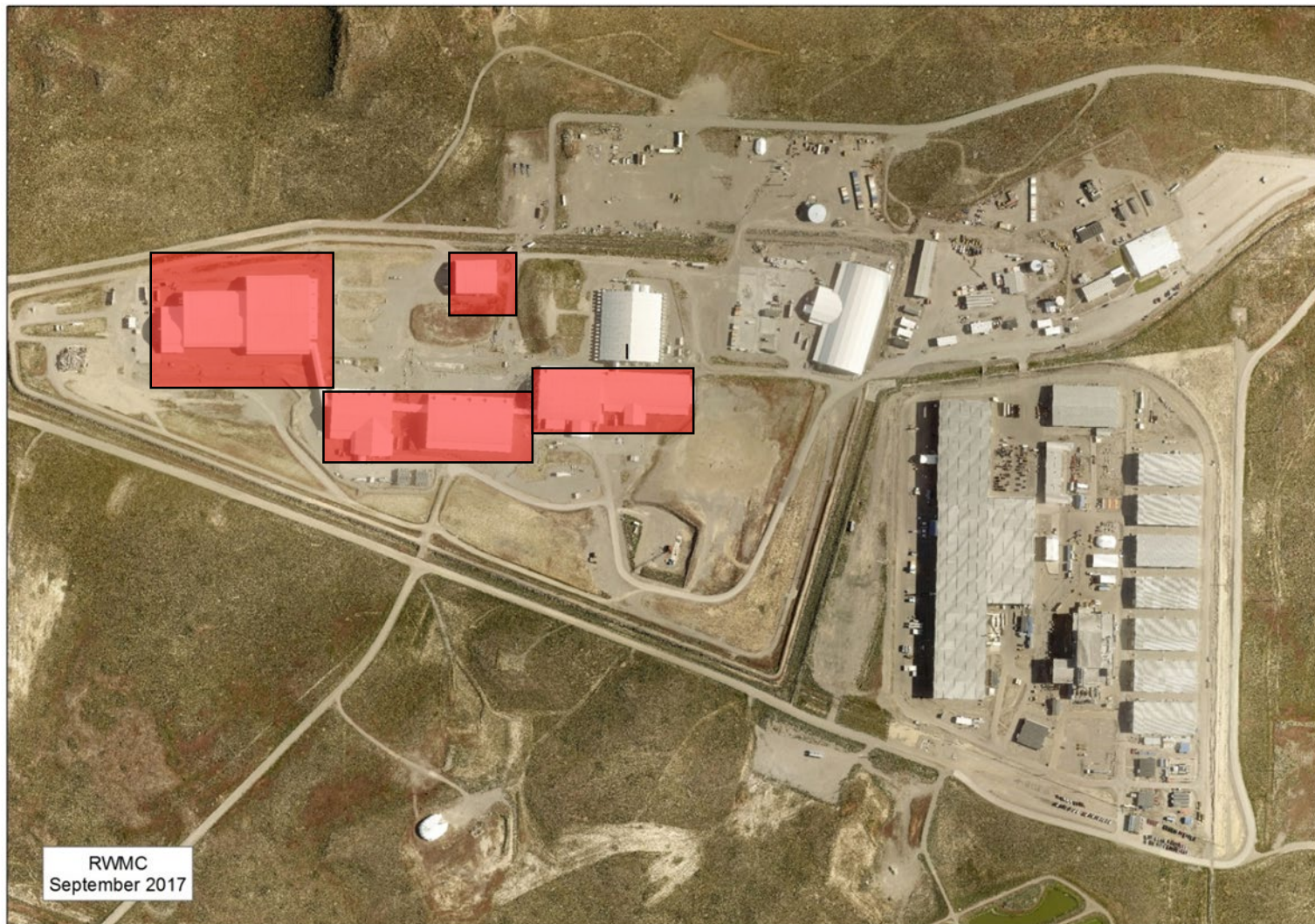


EM Environmental Management

safety ❖ performance ❖ cleanup ❖ closure

Idaho Cleanup Project

Dismantle Remaining ARP Structure in SDA - Phase 3

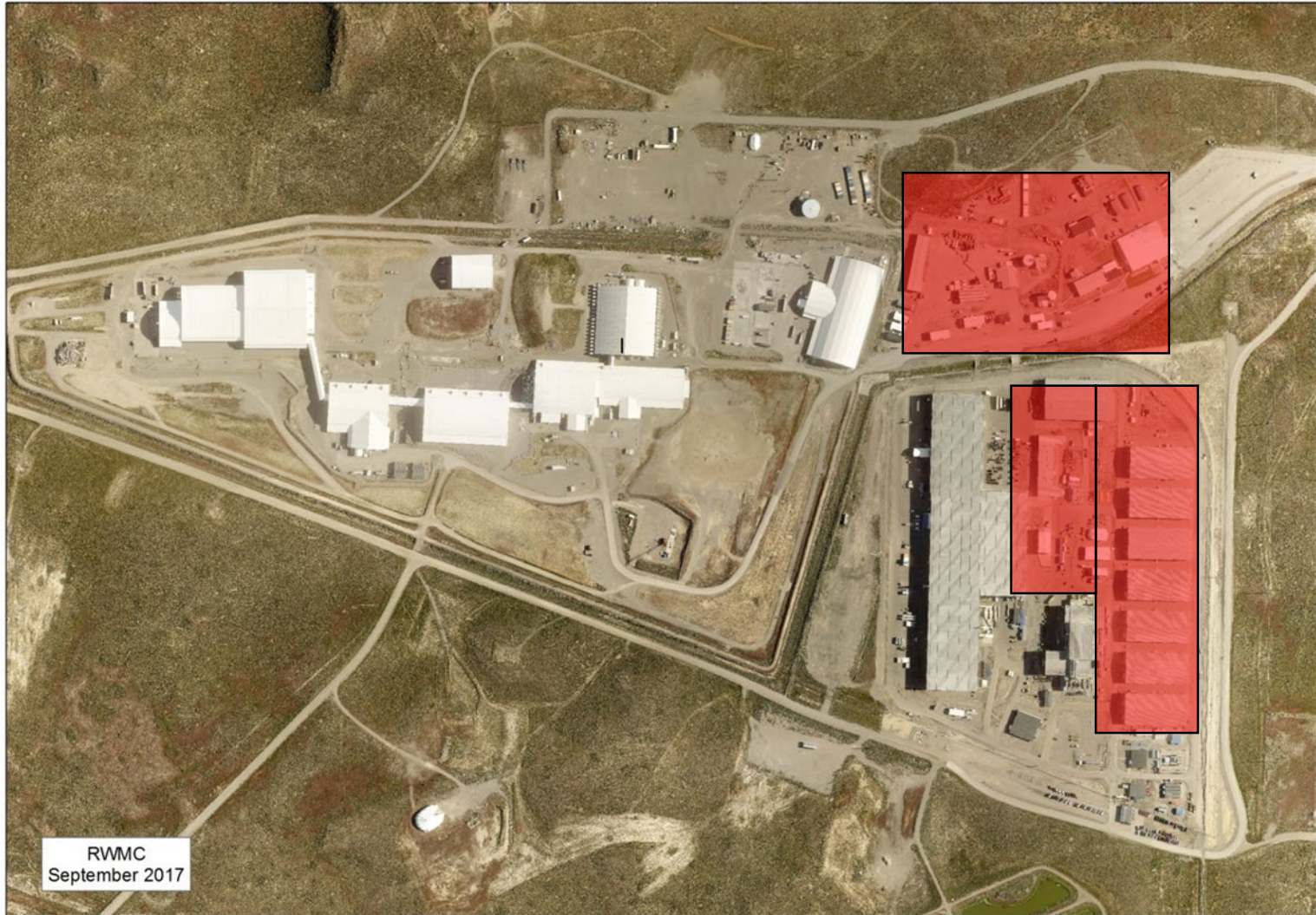


EM Environmental Management

safety ❖ performance ❖ cleanup ❖ closure

Idaho Cleanup Project

RCRA Closure and D&D - Phase 4

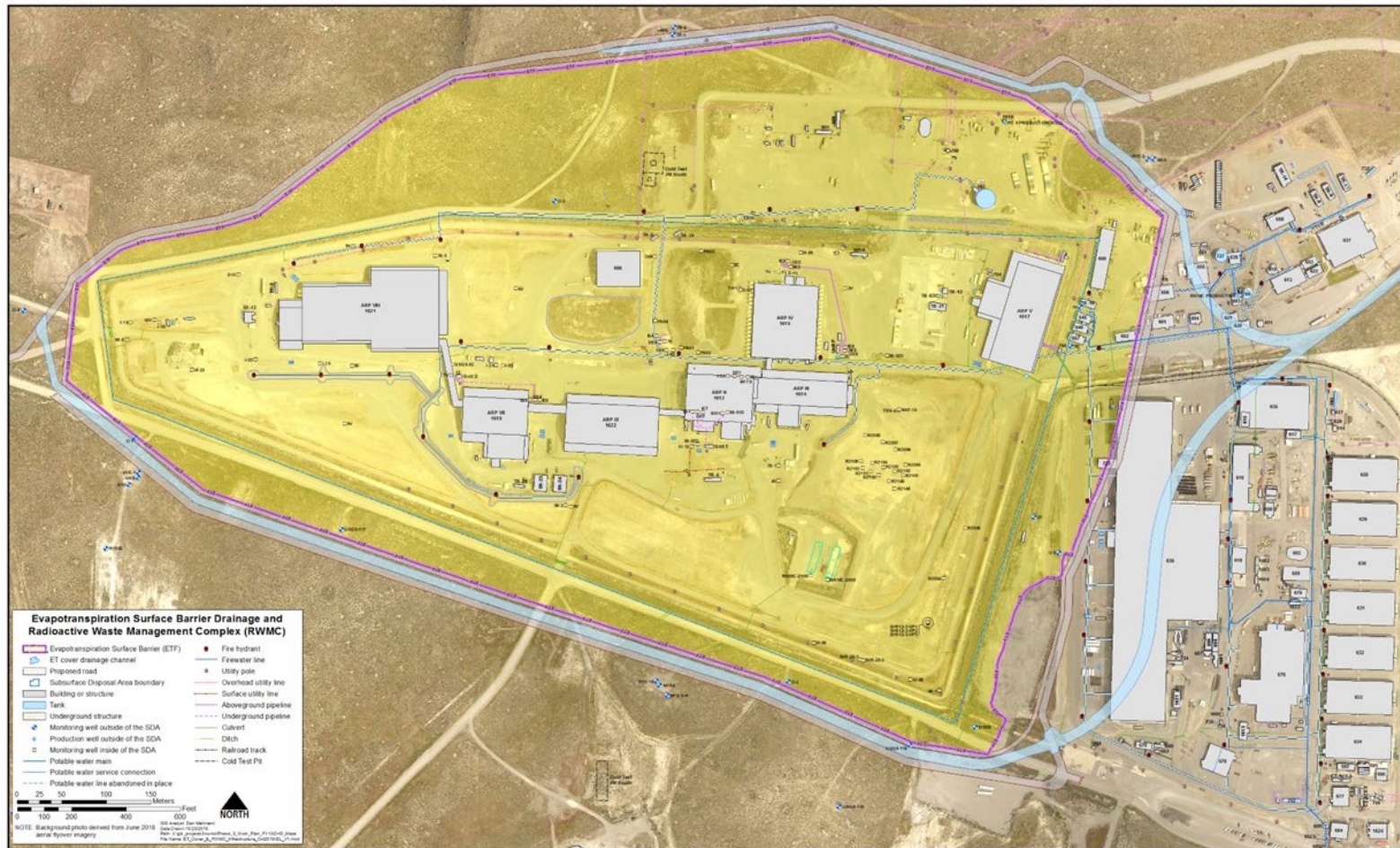


EM Environmental Management

safety ❖ performance ❖ cleanup ❖ closure

Idaho Cleanup Project

SDA Cap Foot Print – Phase 4



EM Environmental Management

safety ❖ performance ❖ cleanup ❖ closure

Idaho Cleanup Project



Questions



EM *Environmental Management*

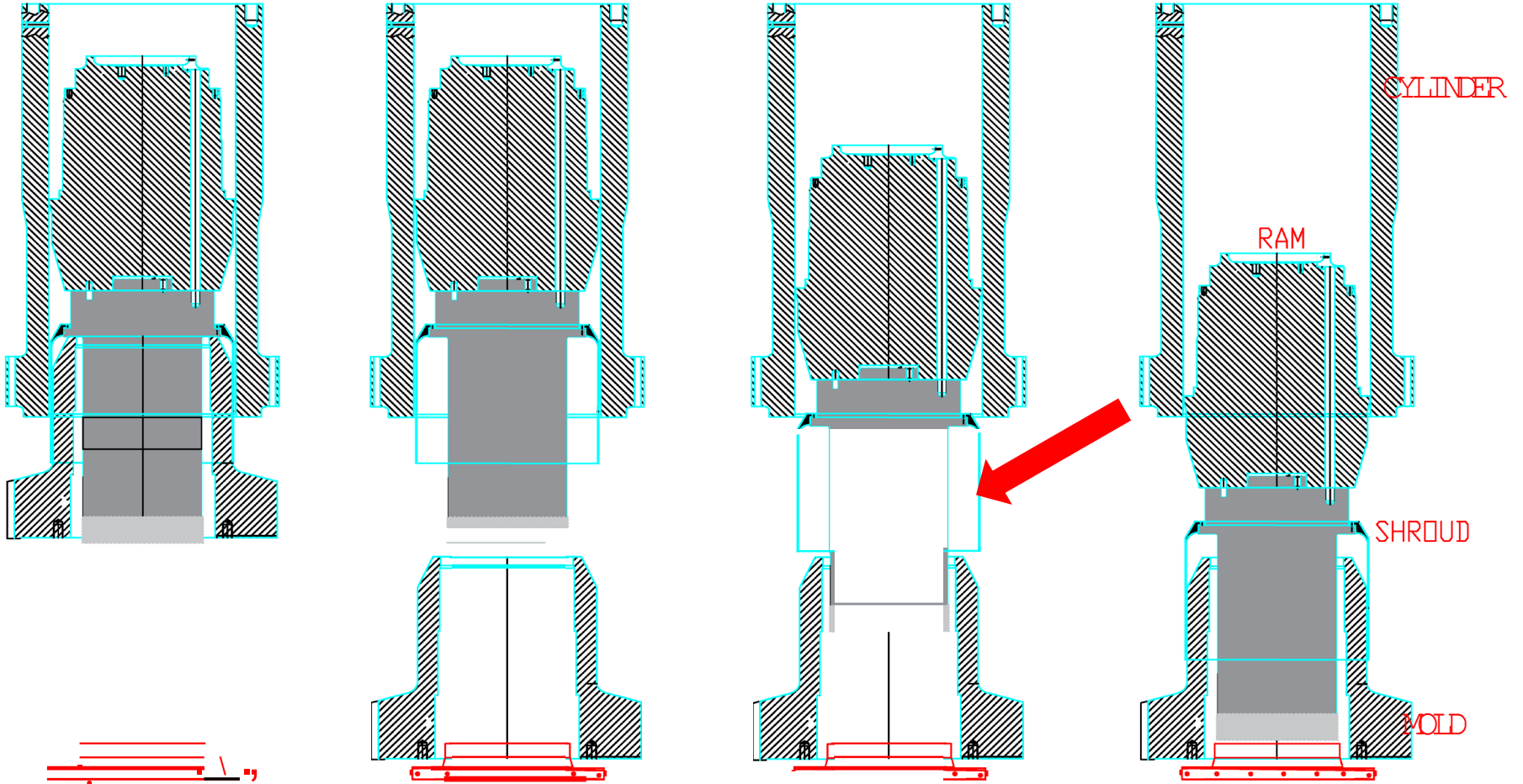
safety ❖ performance ❖ cleanup ❖ closure

Idaho Cleanup Project

Back Up Slides



Super Compactor Issues



AutoCAD SHX Text

SHROUD