



Department of Energy

Washington, DC 20585

June 12, 2026

NOTICE OF FLOODPLAIN ACTION

for

Hydrostor, Inc, Willow Rock Energy Storage Center

Kern County, California

The Department of Energy (DOE), Office of Energy Dominance Financing, is issuing this notice of floodplain action for Hydrostor's Willow Rock Energy Storage Center (WRESC) (Project) in Kern County, California.

Hydrostor has applied for Federal financial assistance for the Project, and DOE has determined that this financial assistance would result in a floodplain action per DOE's floodplain regulations (10 Code of Federal Regulations [CFR] 1022).

Pursuant to 10 CFR Part 1022, a 15-day public comment period for this proposed floodplain action commences with publication of this notice and will conclude on June 29, 2026. At the end of the public comment period, DOE will consider all substantive comments received and prepare a floodplain statement of findings.

The floodplain assessment is attached to this notice.

To submit comments, please email EDF_Environmental@doe.gov. Please include "**Hydrostor: Willow Rock Energy Storage Center**" in the subject line. Comments must be received by June 29, 2026.

FLOODPLAIN ASSESSMENT

for

Hydrostor, Inc., Willow Rock Energy Storage Center

Kern County, California

June 12, 2026

Introduction

Approximately 10.89 miles (54 percent) of a new 19-mile transmission interconnection line is proposed to be built within the 100-year floodplain of Kern County, California. No part of the Project will be located in FEMA-mapped 500-year floodplain. The Willow Rock Energy Storage Center (Project), is not considered to be a critical action, as defined at 10 CFR 1022.4. This memo describes the U.S. Department of Energy's (DOE) assessment of floodplains pursuant to 10 CFR 1022.

Floodplain Assessment

As defined at 10 CFR 1022.4, *Floodplain action* means any DOE action that takes place in a floodplain, including any DOE action in a wetland that is also within the floodplain. DOE has determined that the Project is a floodplain action.

Project Description

The Project includes the construction, operation, maintenance, and decommissioning of the Willow Rock Energy Storage Center (WRESC), a 500 megawatt, 4,000 megawatt-hour energy storage facility and interconnection transmission line in Kern County, California. Energy stored at the WRESC site will be delivered to the Southern California Edison (SCE) Whirlwind Substation via a new 19-mile 230-kV predominantly overhead single-circuit transmission interconnection line. The 230-kV line will terminate at a dead-end tower before the main power transformers, which will step down the voltage to 13.8-kV and 5-kV, suitable for distribution within the WRESC.

Within the 100-year floodplain, approximately 186 tubular steel poles between 60 and 90 feet tall with a diameter of 3 to 6 feet will be installed. The poles will be spaced approximately 600 to 900 feet apart along the entire 19 miles right-of-way from the WRESC site to the Whirlwind Substation. Conductors would be installed along the top of each pole. The steel poles will be mounted on concrete caissons buried approximately 10 feet, with exact excavation depth at each pole location determined by soil conditions and structure height. The pole foundations will be capable of withstanding the peak 100-year flood flows.

The net new development in the 100-year floodplain is approximately 186 tubular steel poles between 60 and 90 feet tall.

Alternatives

The alternatives before DOE include: (1) provide Federal financial assistance for the Project, or (2) not provide Federal financial assistance for the Project. No siting alternatives were considered by DOE.

Proposed Statement of Findings

Approximately 10.89 miles (54 percent) of a new 19-mile 230 kV transmission interconnection line will be built within the 100-year floodplain. Approximately 186 tubular steel poles between 60 and 90 feet tall will be installed (net new). New structure placement will meet local and federal floodplain management requirements. The new structures are designed to not displace or redirect flood flows, significantly increase flood hazards or impact floodplain functionality. Temporary erosion controls will be installed and maintained until the work areas are restored and stabilized. Base flood elevations will not be affected by the Project.

The following images (Figures 1 through 3) show the WRESC facility (red, orange, and yellow polygons) and the transmission interconnection line (red line). The 100-year floodplain is shown in purple.

Figure 1 Willow Rock Energy Storage Center Floodplain Map

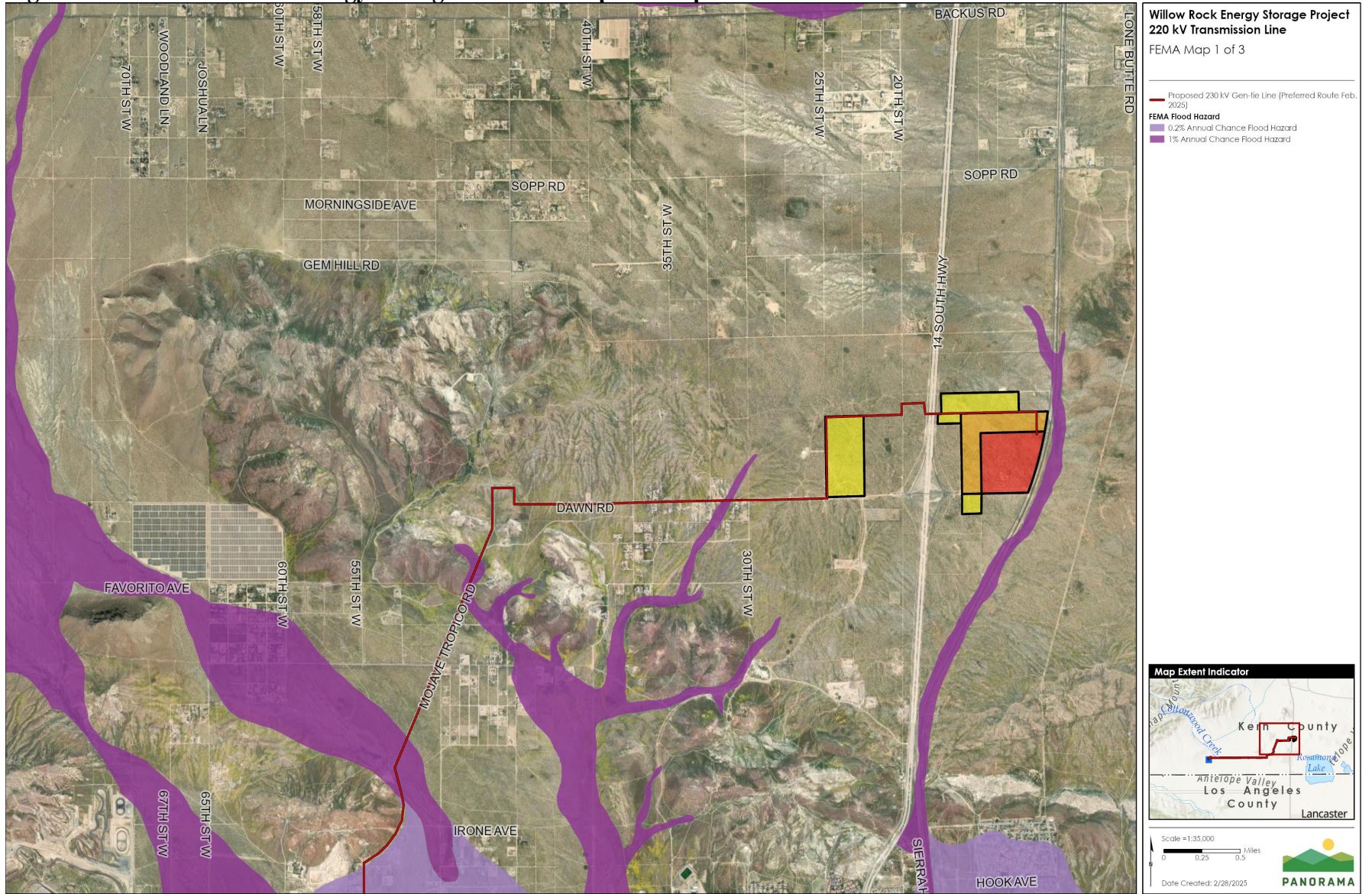


Figure 2 Willow Rock Energy Storage Center, Gen-Tie Line Floodplain Map

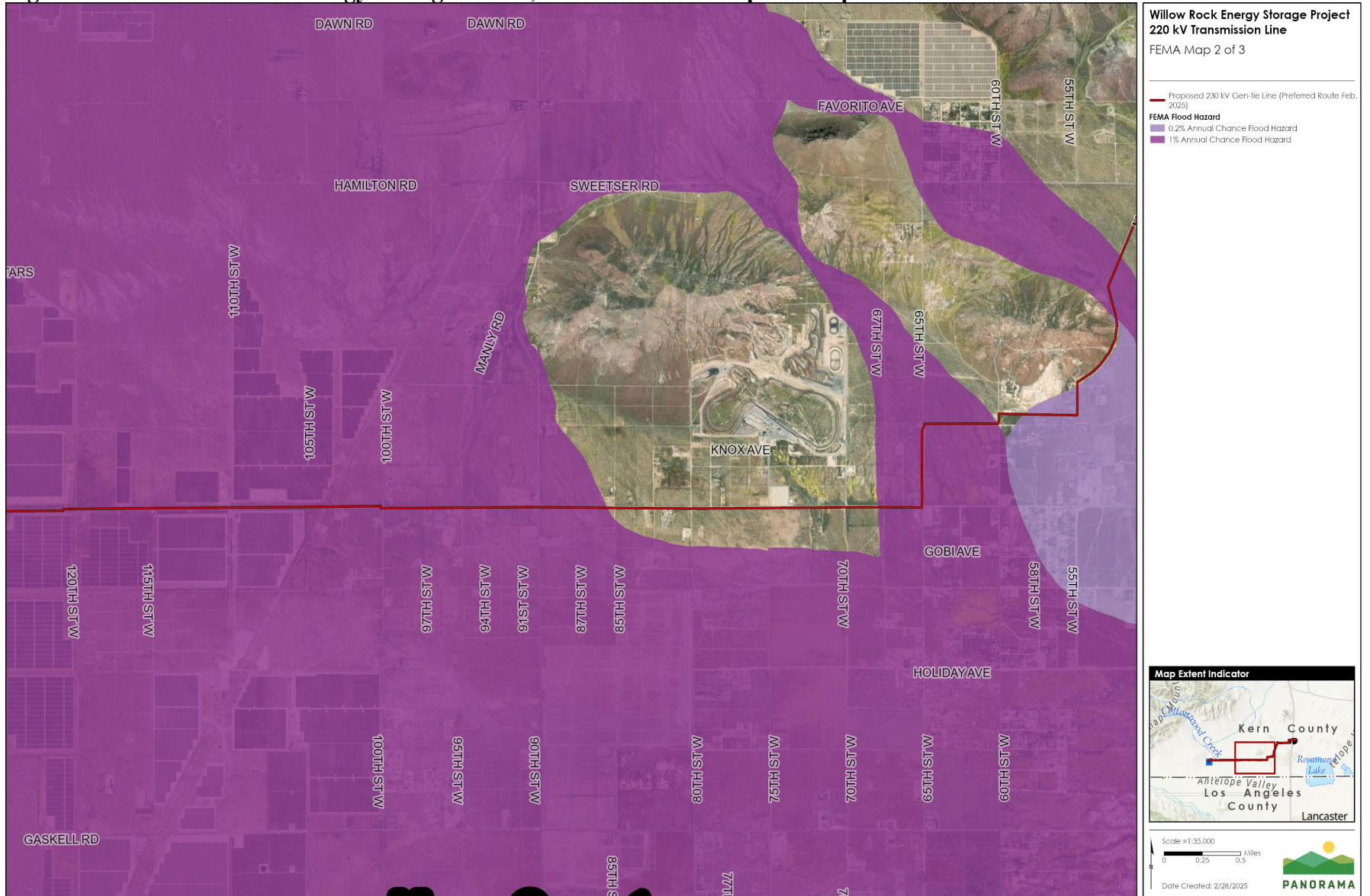


Figure 3 Willow Rock Energy Storage Center, Gen-Tie Line Floodplain Map

