

**Welcome to
ETEC!**



WELCOME TO DOE'S CONNECT SERIES



Community Outreach, Neighbor Notifications,
Engagement, Collaboration & Training

TONIGHT'S COMMUNITY UPDATE

May 13, 2026

Hear about DOE's cleanup progress at SSFL
and meet the team executing the mission



With You Today



Wendy Green Lowe
P2 Solution
Meeting Facilitator



Dr. Josh Mengers
DOE-EM
Federal Project Director,
ETEC



Karen Edson
DOE-EM
Public Affairs Specialist



Focus of Today's CONNECT



CONNECT #1 Recap



EM Overview



ETEC History + Current Status



Q&A



Feedback & Resources



Meeting Guidelines

Appreciate a Diversity of Perspectives, Listen with Curiosity, and Treat Others With Kindness & Respect

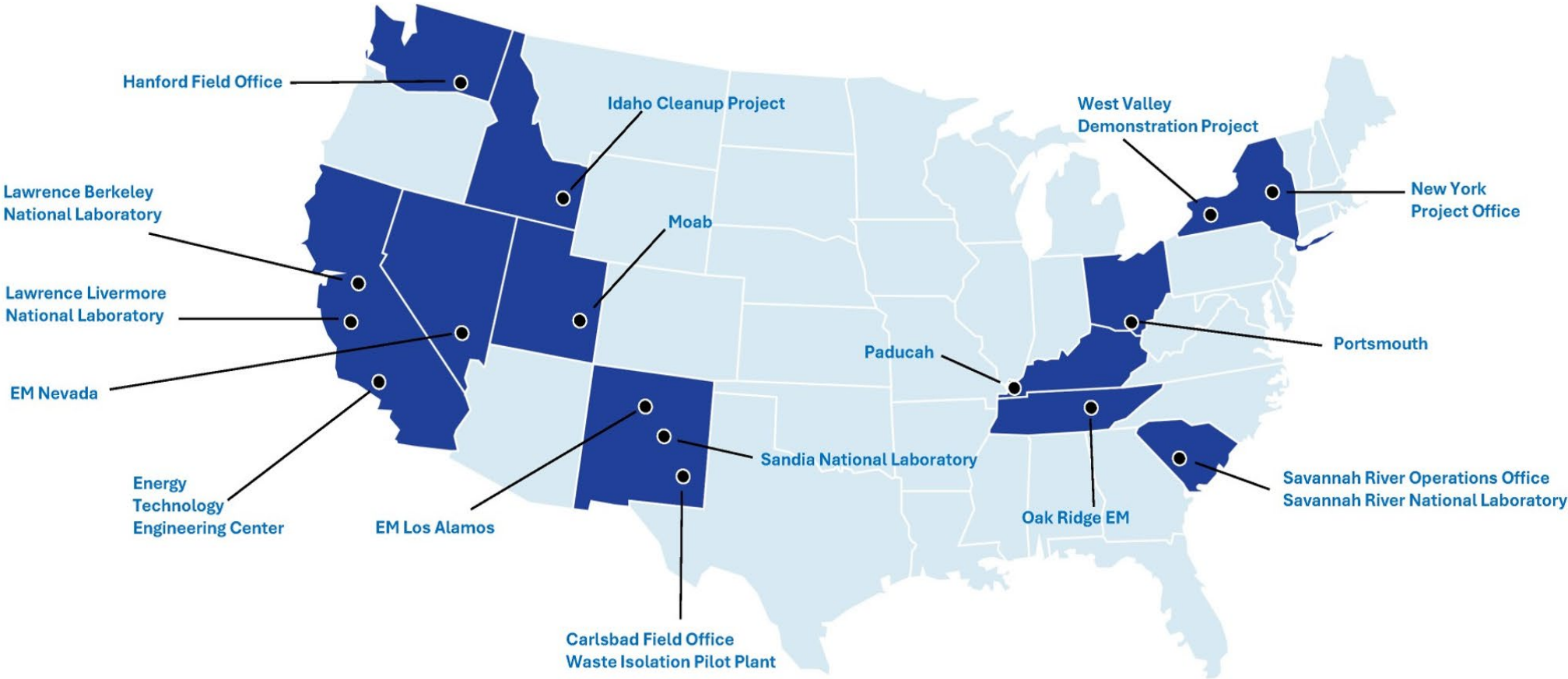


Recap: Community Questions From CONNECT #1

- ? What kind of contamination is at ETEC?
- ? Where can the public see SSFL groundwater and air monitoring information?
- ? Who decides the final cleanup standards?
- ? How is waste removed from the site and where does it go?
- ? Has any contamination migrated from the site?
- ? Is the soil at SSFL safe to walk on?



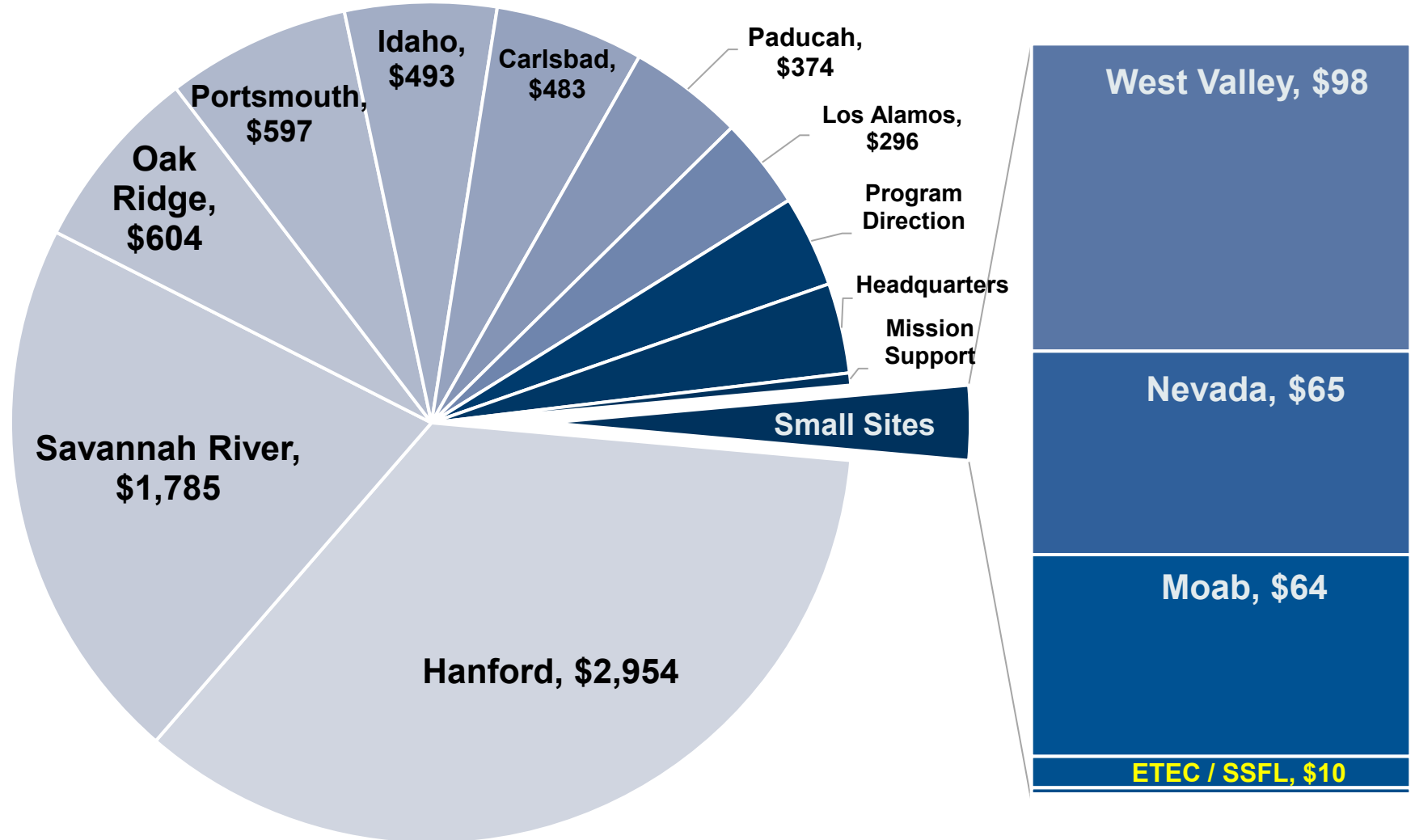
EM Expertise in Environmental Cleanup



Environmental Management

FY '27 Budget Request (\$M)

**ETEC's Budget
Reflects
Current Cleanup
Status**



Environmental Management: Six Primary Mission Areas

Special Nuclear Materials & Used Nuclear Fuel
\$555M / 7%

TRU & Solid Waste
\$1,132M / 14%

Soil & Groundwater
\$566M / 7%



EM's FY 2027 Congressional Budget Request - \$8.176 Billion Total

EM Sites		Radioactive Tank Waste \$3,324M / 41%		Facility D&D \$1,356M / 17%		Site Services \$1,243M / 15%	FY 27 (\$M)
Savannah River	✓	✓	✓	✓	✓	✓	1,785
River Protection		✓				✓	1,945
Richland			✓	✓	✓	✓	1,009
Idaho	✓	✓	✓		✓	✓	493
Oak Ridge	✓		✓	✓	✓	✓	604
Portsmouth	✓			✓		✓	597
Paducah	✓			✓		✓	374
Carlsbad			✓			✓	483
Los Alamos			✓	✓	✓	✓	296
West Valley			✓	✓		✓	98
All Others			✓	✓	✓	✓	492

ETEC:
\$10 Million



EM Site Snapshots

California: LBNL + LLNL



Cleaning up and repurposing lab space for new and ongoing scientific work



EM Site Snapshots

West Valley, NY



Cleaning up a former nuclear fuel reprocessing facility

Moab, UT

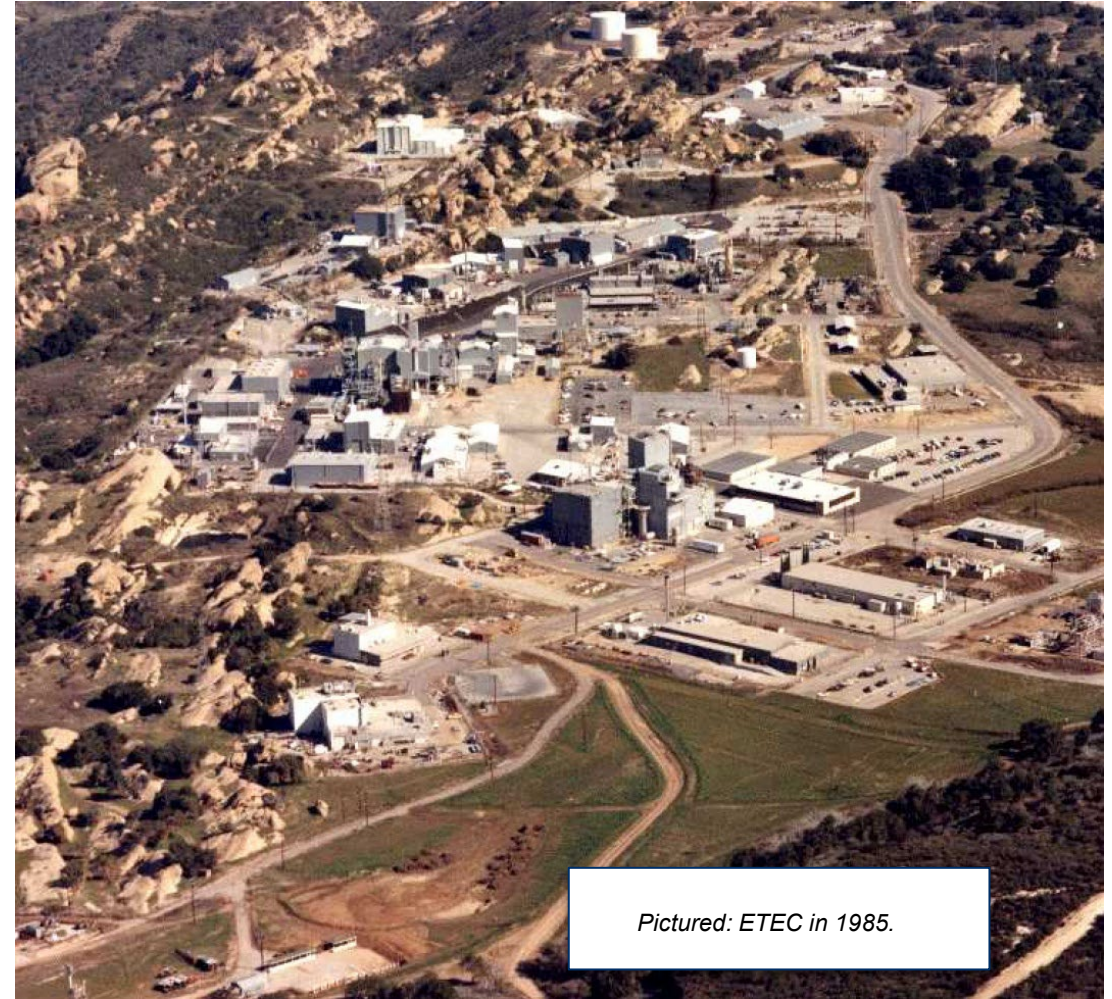


Protecting the Colorado River by removing and safely disposing of material from an old uranium processing mill



A History of ETEC

DOE conducted a broad range of energy-related research, testing and development projects at Area IV (ETEC).

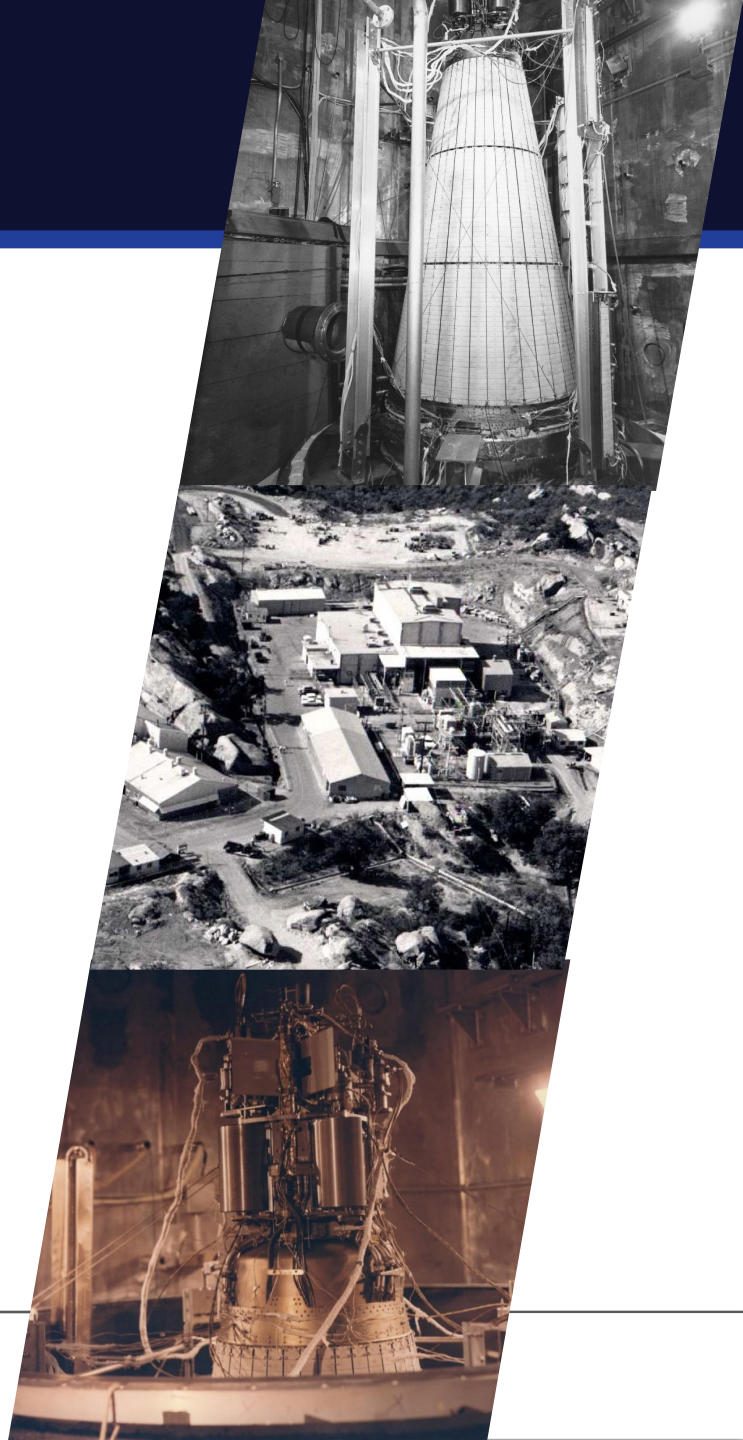


Pictured: ETEC in 1985.



1950s to 1998

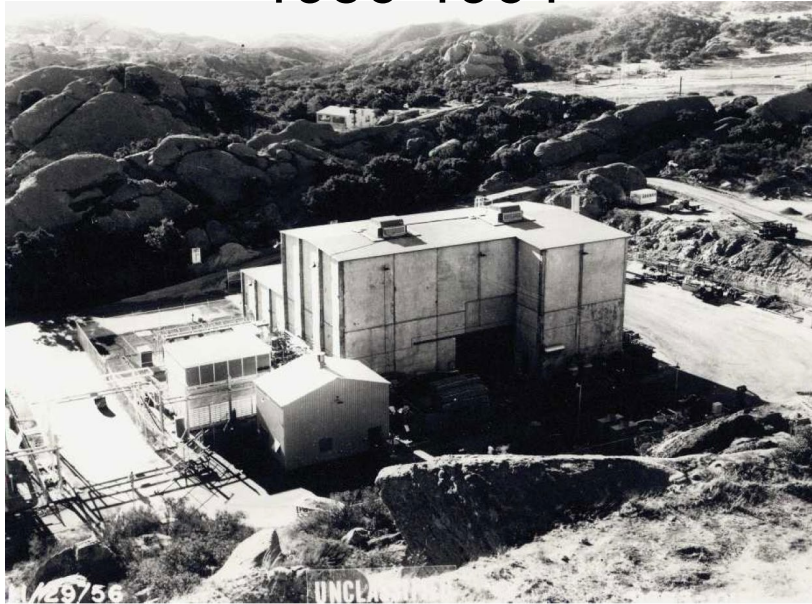
- **1950s:** DOE and its predecessor agencies performed liquid metals and nuclear energy research in Area IV
 - The Sodium Reactor Experiment (SRE)
 - The Former Sodium Disposal Facility (FSDF)
- **1988:** DOE ended nuclear research at ETEC
- **1998:** DOE ended all operations at ETEC



Previous Remediations

Sodium Reactor Experiment (SRE)

1956-1964



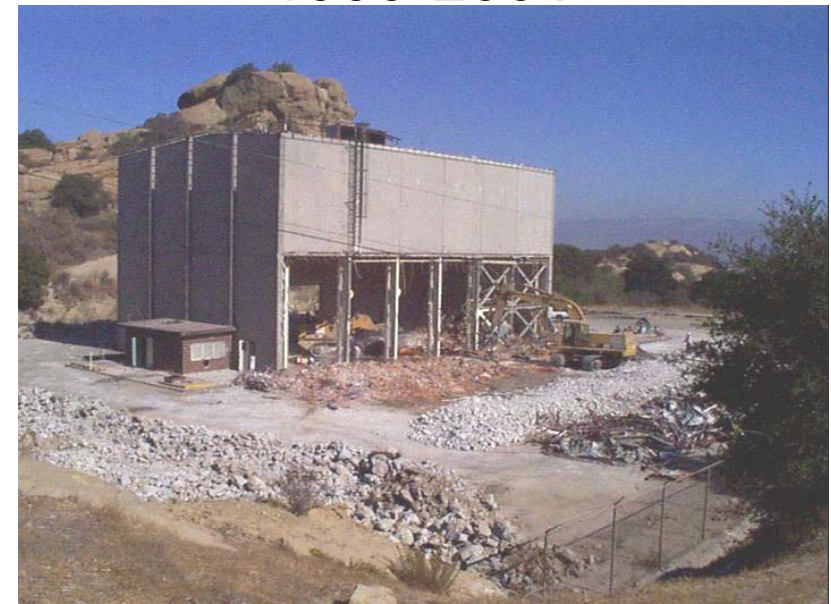
Operations

1974-1982



Decontamination and
Decommissioning

1999-2001

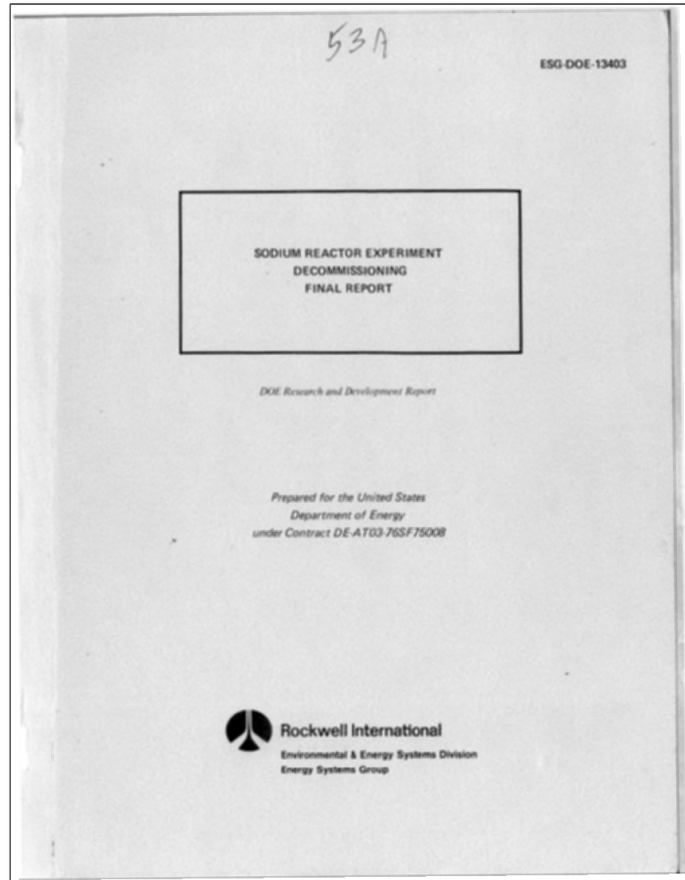


Building
Demolition



Previous Remediations

Sodium Reactor Experiment (SRE) Decontamination 1974-'82



Previous Remediations

Sodium Reactor Experiment (SRE) Decontamination 1974-'82



Previous Remediations

Sodium Reactor Experiment (SRE) Decontamination 1974-'82



Previous Remediations

Sodium Reactor Experiment (SRE) Decontamination 1974-'82



Previous Remediations

Sodium Reactor Experiment (SRE) Demolition 1999-2001



Previous Remediations

Sodium Reactor Experiment (SRE)

1958



2000



Previous Remediations

Former Sodium Disposal Facility (FSDF) 2000-'02

SHEA - 096144
ATTACHMENT

Draft Interim Measure Implementation Report

Former Sodium Disposal Facility
Santa Susana Field Laboratory

Submitted to:

Rocketdyne Propulsion and Power
The Boeing Company
6633 Canoga Avenue
Canoga Park, California 91309

Submitted by:

Shaw Environmental & Infrastructure, Inc.
34552 East Foothill Boulevard
9th Floor
Pasadena, California 91107

September 13, 2002



ARCHIVE COPY



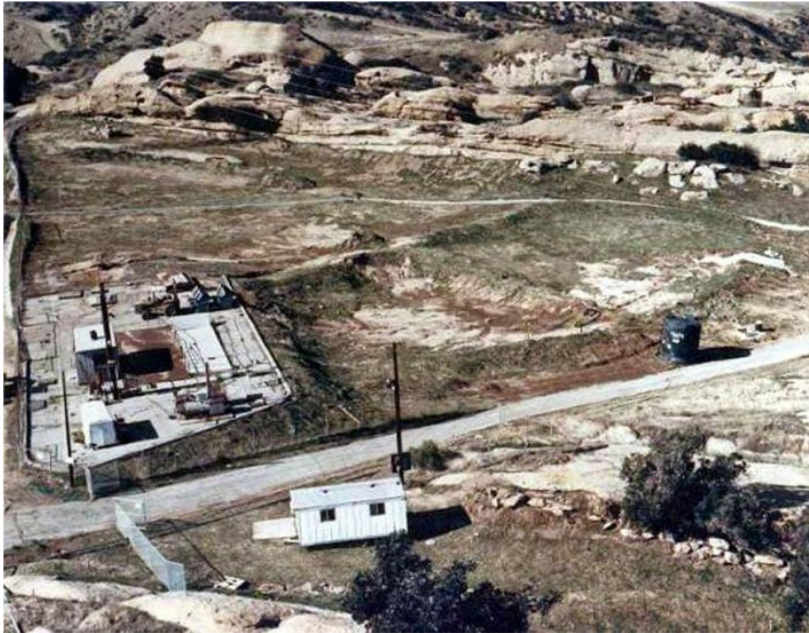
Previous Remediations: Former Sodium Disposal Facility (FSDF) 2000-'02



Previous Remediations

Former Sodium Disposal Facility (FSDF)

1991



2001

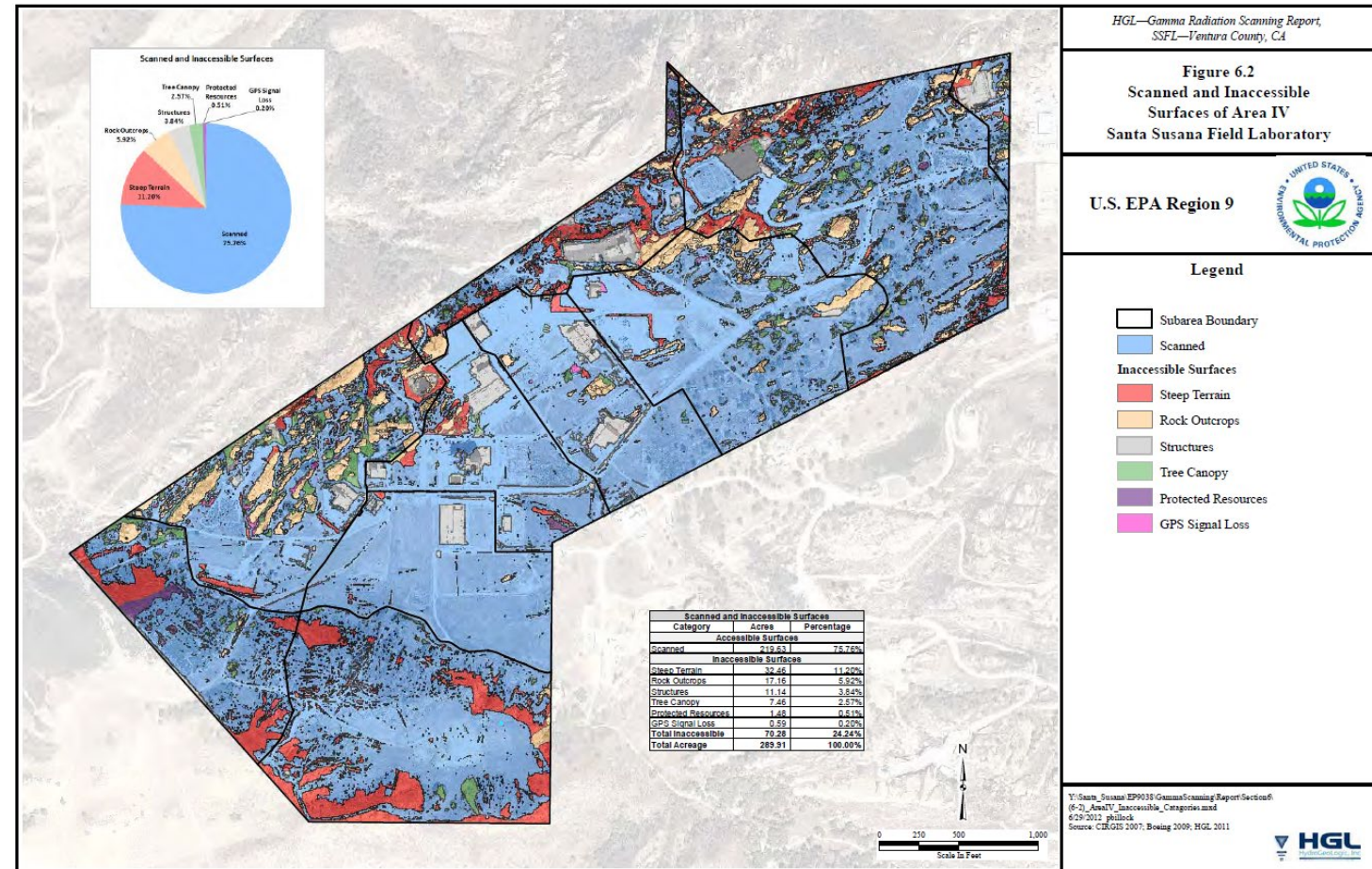


2026



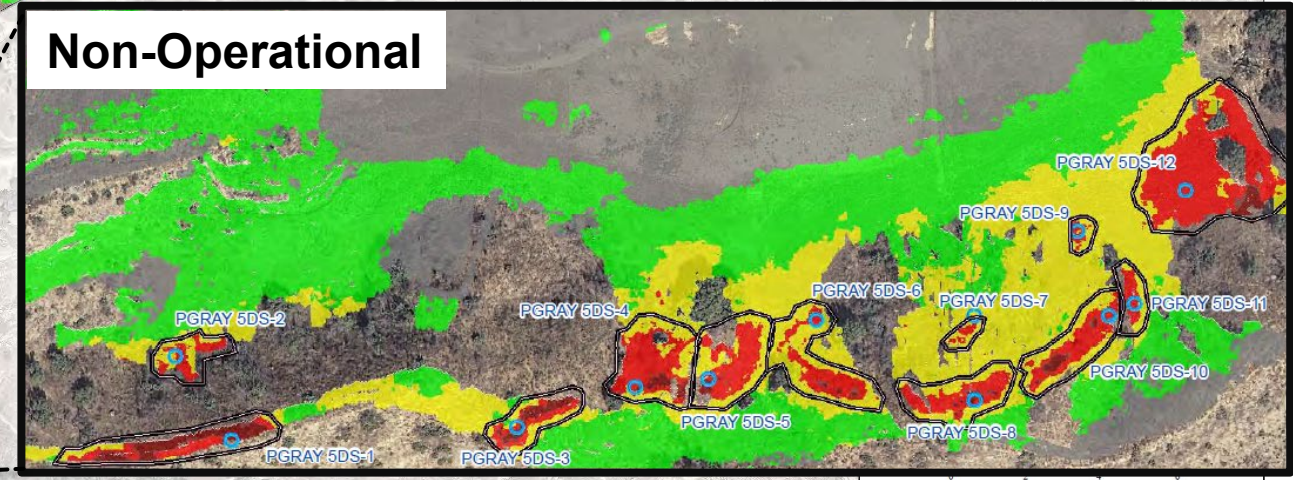
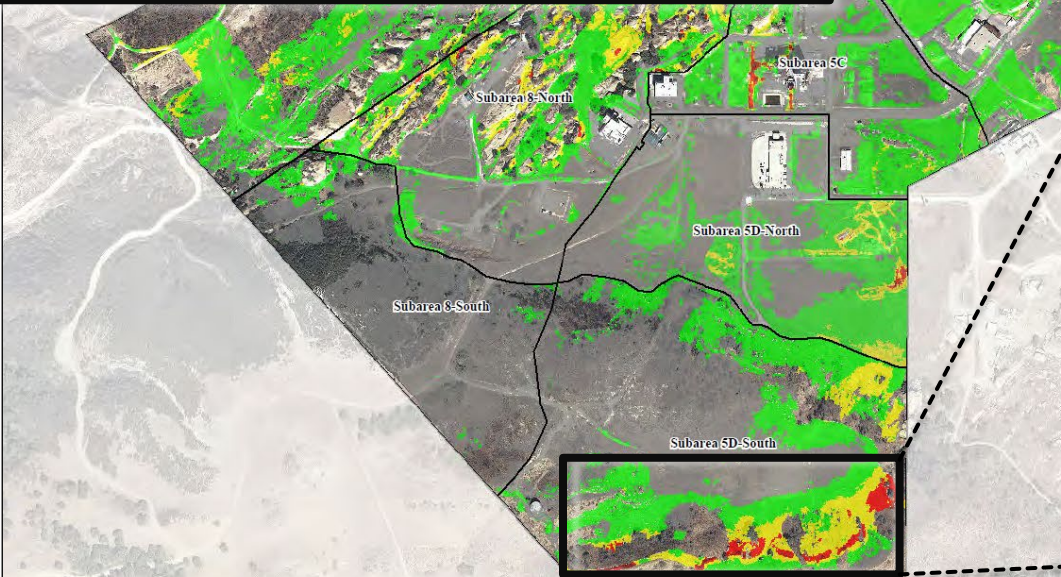
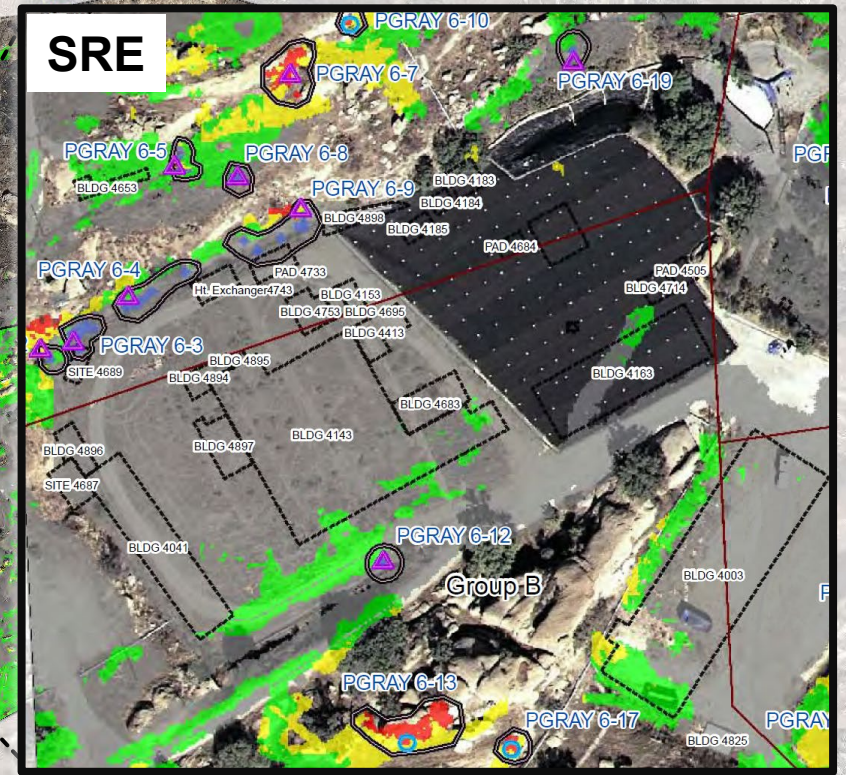
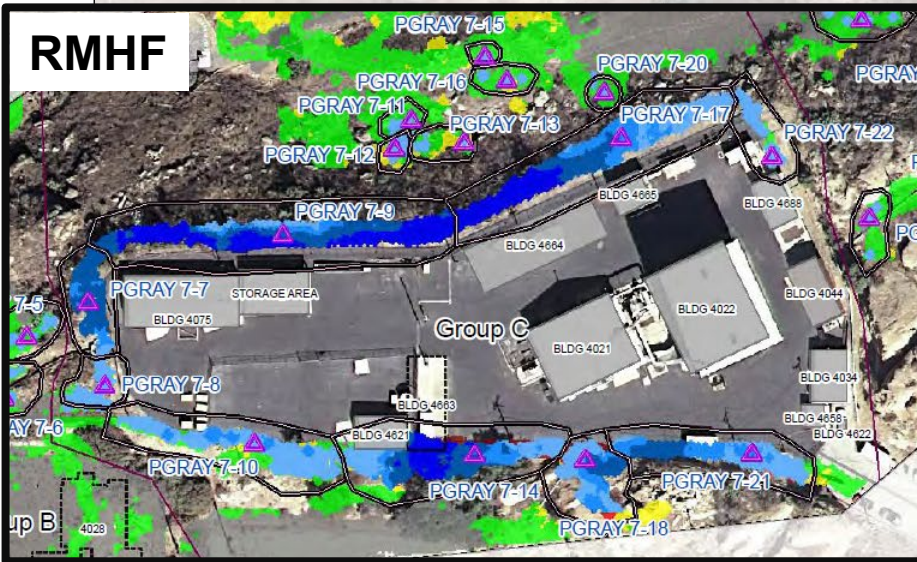
US EPA Area IV Radiological Survey

- U.S. EPA conducted a comprehensive radiological screening from 2009 – 2012
- All accessible portions of Area IV and Northern Buffer Zone were scanned.
- Initial results identified “Potential Gamma Radiation Anomalies (PGRAY)” for follow up investigation.
- The EPA’s independent assessment prioritized community and environmental safety.



Pictured: US EPA Gamma Survey Map Showing portions of Area IV scanned

US EPA 2012 Area IV Survey Gamma Radiation Scanning Results



Standard Deviations Above the Mean Total Count Rate

Natural vs. Site-Related Radiation

Naturally Occurring Radioactive Material (NORM)

Elements like uranium, thorium, and potassium that are naturally present everywhere.

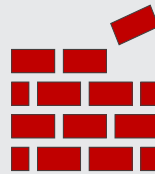
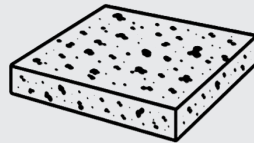
Everyday examples include:



Garden Supplies:



Building Materials:



Site-Related Radioactive Material

Specific elements, primarily Cesium-137, from past nuclear research.

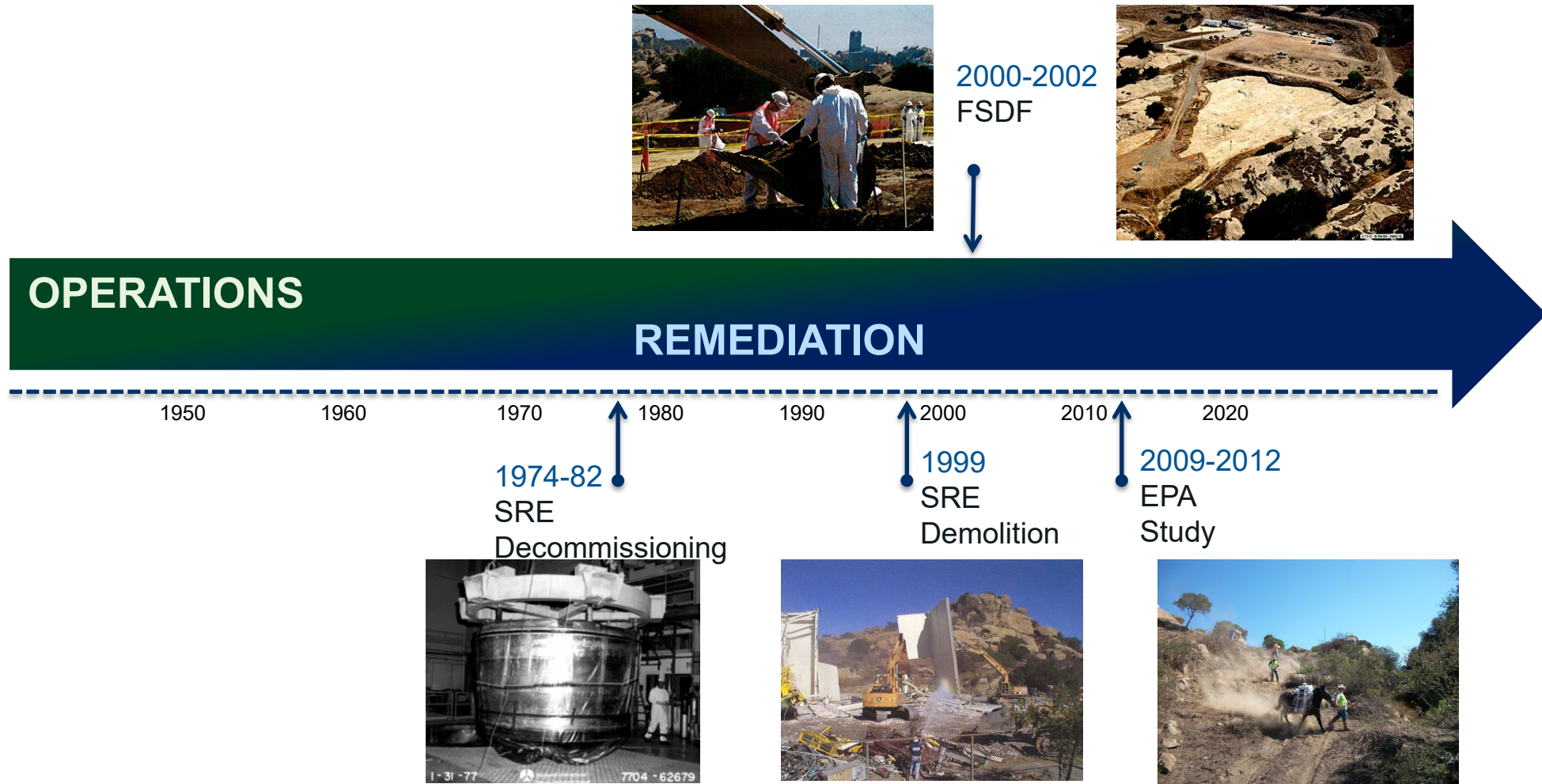
What EPA Found:

- The EPA's comprehensive survey identified 217 Potential Gamma Radiation Anomalies (PGRAYs)
- Only 70 such locations were from site related materials, less than 1 out of 3.
- They were in specific, localized areas related to former facilities, primarily the RMHF.

DOE is using the EPA results to guide our cleanup at SSFL



ETEC Operations + Remediation Timeline



Recap: Current Status

- Much of the remediation at SSFL has already been completed:
 - Sodium Reactor Experiment
 - Former Sodium Disposal Facility
 - All above ground buildings demolished
- Contamination characterized with ongoing interim remediation
- Environmental monitoring data collected and published annually



Q&A

Process

- Raise your hand
- Questions are taken in the order asked

Reminder

This is an informal opportunity. No comments are being recorded

Future *CONNECT* Topics



Tell us what you want to learn more about...

- Cleanup Budget Simulation
- DOE's Approach To Risk Analysis
 - US EPA Study Details
- Safe Waste Transportation & Disposal
 - Other Topics of Interest?



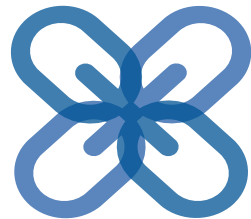
Feedback Opportunities

Share Your Feedback On...

- The CONNECT Series
- Tonight's Community Update



Thank You For Joining Us



**Watch For More CONNECT
Opportunities**



**Learn More About DOE's
Cleanup at SSFL**





U.S. DEPARTMENT
of ENERGY