

**Kootenai River Ecosystem
Final Environmental Assessment**

Bonneville Power Administration
June 2005

Kootenai River Ecosystem

Responsible Agencies: U.S. Department of Energy, Bonneville Power Administration (BPA), Kootenai Tribe of Idaho (KTOI) and Idaho Department of Fish and Game (IDFG).

Name of Proposed Project: Kootenai River Ecosystem.

State Involved: Idaho.

Abstract: The Kootenai River is currently nutrient poor and has been so for about 25 years. Low nutrient levels are partly responsible for the low productivity found in the river and part of the reason that important fish populations are not doing well. BPA proposes to fund KTOI and IDFG to add liquid nitrogen and phosphorus to the Kootenai River in Idaho from late June through September for up to five years to replace nutrients lost to the hydrosystem. The goal of this project is to help enhance native fish populations and river health. The nutrients are expected to stimulate production in the Kootenai River's depleted food web and reverse downward trends in fish populations such as trout, kokanee, mountain whitefish, burbot, and white sturgeon. Monitoring would determine the effects of nutrients on the food chain, ecosystem, and water quality. This proposed project would be temporary and would be monitored during the application process, and re-evaluated after 3-5 years.

The project would require a temporary gravity-fed nutrient delivery system on a site near Leonia, Lincoln County, Montana. Temporary tanks on a bench above the river would release nutrients through pipes into the river. An existing access road would be improved to the tank site. The tanks would be located on private land. The pipe to the river would be on National Forest System Lands managed by the Kootenai National Forest.

Most impacts would be temporary. Some trees would be removed at the tank location. Impacts to land use, visual resources, recreation, soils, vegetation, wildlife, noise, public health and safety, cultural resources, floodplains and wetlands, and water resources would be minor. If successful, fish productivity would be improved as the nutrients stimulate the aquatic food chain.

BPA is also considering the No Action Alternative. In the No Action Alternative, BPA would not fund nutrient treatment. There would be no impacts beyond those currently occurring in the Kootenai River ecosystem.

The comments received on the preliminary environmental assessment (EA) are in Appendix A. The Final EA includes changes made to respond to the comments. Changes are underlined. Minor editorial changes or deletions are not underlined. The environmental analysis determined the Proposed Action and the No Action Alternative would have no significant impacts. The Finding of No Significant Impact (FONSI) is included in this document.

For additional information, contact:
Colleen Spiering - KEC-4
Project Environmental Lead
Bonneville Power Administration
P.O. Box 3621
Portland, Oregon 97208
Telephone: (503) 230-5756
Email: caspiering@bpa.gov

For more copies of this document, call 1 (800) 622-4520 and ask for the document by name. The document is also at http://www.efw.bpa.gov/environmental_services/Document_Library/Kootenai/.

For additional information on DOE NEPA activities, please contact Carol M. Borgstrom, Director, Office of NEPA Policy and Compliance, EH-42, U.S. Department of Energy, 1000 Independence Avenue S.W., Washington D.C. 20585, phone: 1-800-472-2756 or visit the DOE NEPA Web site at www.eh.doe.gov/nepa.

Table of Contents

1.0 Purpose and Need for Action.....	1
1.1 Need for Action.....	1
1.2 Background.....	1
1.3 Purposes.....	3
1.4 Other Planning or Projects in the Area.....	3
1.5 Public Involvement.....	4
1.6 Related Documents.....	6
1.7 Decisions To Be Made.....	6
2.0 Proposed Action and Alternatives.....	7
2.1 Proposed Action.....	7
2.1.1 Nutrients, Mixing Zone, and Affected Waters.....	7
2.1.2 Access Road, Holding Tanks and Pipeline, Operations and Maintenance.....	11
2.1.3 Housing.....	14
2.1.4 Security and Safety.....	14
2.1.5 Power Requirements.....	15
2.1.6 Research and Monitoring.....	15
2.1.7 Site Restoration.....	17
2.2 No Action Alternative.....	17
2.3 Alternatives Considered but Eliminated from Detailed Consideration.....	18
2.3.1 Alternative Treatment Sites.....	18
2.3.2 Nutrient Management Potential of Libby Dam Operation.....	18
2.4 Comparison of Alternatives.....	19
3.0 Affected Environment and Environmental Consequences.....	23
3.1 Fish and Wildlife.....	23
3.1.1 Affected Environment.....	23
3.1.2 Impacts of the Proposed Action.....	23
3.1.3 Threatened and Endangered Species.....	24
3.1.4 Species of Special Concern.....	31
3.1.5 Impacts of the No Action Alternative.....	33
3.1.6 Cumulative Impacts.....	33
3.2 Land Use.....	33
3.2.1 Affected Environment.....	33
3.2.2 Potential Impacts of the Proposed Action.....	34
3.2.3 Potential Impacts of the No Action Alternative.....	34
3.2.4 Cumulative Impacts.....	34
3.3 Visual Resources.....	34
3.3.1 Affected Environment.....	34
3.3.2 Potential Impacts of the Proposed Action.....	34
3.3.3 Potential Impacts of the No Action Alternative.....	35
3.3.4 Cumulative Impacts.....	35

3.4 Recreation	35
3.4.1 Affected Environment	35
3.4.2 Potential Impacts of the Proposed Action	36
3.4.3 Potential Impacts of the No Action Alternative	36
3.4.4 Cumulative Impacts.....	36
3.5 Water Resources	36
3.5.1 Affected Environment	36
3.5.2 Potential Impacts of the Proposed Action	36
3.5.3 Potential Impacts of the No Action Alternative	39
3.5.4 Cumulative Impacts.....	39
3.6 Wetlands	39
3.6.1 Affected Environment	39
3.6.2 Potential Impacts of the Proposed Action	40
3.6.3 Potential Impacts of the No Action Alternative	40
3.6.4 Cumulative Impacts.....	40
3.7 Floodplains.....	40
3.7.1 Affected Environment and Potential Impacts.....	40
3.7.2 Potential Impacts of the No Action Alternative	40
3.7.3 Cumulative Impacts.....	40
3.8 Cultural Resources	41
3.8.1 Affected Environment	41
3.8.2 Potential Impacts of the Proposed Action	41
3.8.3 Potential Impacts of the No Action Alternative	42
3.8.4 Cumulative Impacts.....	42
3.9 Vegetation	42
3.9.1 Affected Environment	42
3.9.2 Potential Impacts of the Proposed Action	43
3.9.3 Potential Impacts of the No Action Alternative	43
3.9.4 Cumulative Impacts.....	43
3.10 Soils.....	44
3.10.1 Affected Environment	44
3.10.2 Potential Impacts of the Proposed Action	44
3.10.3 Potential Impacts of the No Action Alternative	44
3.10.4 Cumulative Impacts.....	44
3.11 Noise, Public Health and Safety	44
3.11.1 Affected Environment	44
3.11.2 Potential Impacts of the Proposed Action	45
3.11.3 Potential Impacts of the No Action Alternative	46
3.11.4 Cumulative Impacts.....	46
4.0 Consultation, Permit and Review Requirements	47
4.1 National Environmental Policy Act	47
4.2 Threatened and Endangered Species and Critical Habitat	47
4.3 Fish and Wildlife Conservation	47

4.4 Discharge Permits under the Clean Water Act	48
4.5 Safe Drinking Water Act.....	48
4.6 Resource Conservation and Recovery Act.....	48
4.7 State, Areawide, and Local Plan and Program Consistency	49
4.8 Wetlands and Floodplains Protection.....	49
4.9 Recreation Resources	49
4.10 Federal Insecticide, Fungicide and Rodenticide Act.....	49
4.11 Heritage Conservation.....	49
4.12 Noise Control Act	50
4.13 Clean Air Act	50
4.14 Review, Consultation and Permit Requirements not Applicable to this Project.....	50
4.14.1 Stormwater Permit.....	50
4.14.2 Toxic Substances Control Act.....	50
4.14.3 Energy Conservation at Federal Facilities.....	50
4.14.4 Farmland Protection Policy Act	50
4.14.5 The Executive Order on Environmental Justice	50
5.0 List of Agencies, Organizations, and Persons Sent the EA	51
6.0 Glossary	54
7.0 References	56
Appendix A Public Comments	

List of Figures and Tables

Figure 1 Kootenai River Basin and Treatment Location.....	8
Figure 2 Proposed Action Site Map.....	9
Figure 3 Schematic of the Proposed Nutrient Enrichment System	8
Figure 3A Nutrient Application Pipeline and Tank System for Gravity-Fed Flow.....	10
Figure 4 Schematic of the Mixing Zone	11
Figure 5 Preliminary Tank Layout	13
Figure 6 Schematic Layout of Data Logger and Measuring Devices.....	16
Figure 7 Alternate Treatment Sites. Site 1A is the Proposed Action.....	19
Figure 8 The Cabinet/Yaak Grizzly Bear Recovery Zone.....	28
Figure 9 The Candy Mountain Wolf Pack Home Range.....	29
Figure 10 Canada Lynx Habitat and Linkage Zones	30
Table 1 Potential Outcomes and Possible Management Actions	17
Table 2 Environmental Impacts of Alternatives	20
Table 3 Alternatives Compared to Project Purposes	22
Table 4 ESA-Listed Species in Project Area	24
Table 5 Idaho Species of Concern	31

1.0 Purpose and Need for Action

1.1 Need for Action

The Bonneville Power Administration, under provisions of the **Pacific Northwest Electric Power Planning and Conservation Act of 1980 (Act)**¹, is obligated to protect, mitigate and enhance fish and wildlife and their habitats affected by the construction and operation of the federal hydroelectric system in the Columbia Basin, consistent with the Northwest Power and Conservation Council's (Council) Fish and Wildlife Program (2000). Libby Dam, on the Kootenai River near Libby, Montana is part of the federal hydroelectric system, and so BPA has a need to address impacts from Libby Dam on fish and wildlife.

The construction and operation of Libby Dam has changed the Kootenai's flow patterns and also captured nutrients, such as nitrogen (N) and phosphorus (P) that once enriched downstream areas, behind the dam in Lake Koocanusa. Low nutrient levels are believed to be partly responsible for the low productivity of important native fish populations found in the river such as sturgeon, burbot, kokanee, redband trout, whitefish, bull trout, and cutthroat trout. These populations are particularly important to the Kootenai Tribe of Idaho (KTOI), which historically derived about 50-70 percent of its subsistence from the Kootenai River fishery (Scholz, et al. 1985). The Tribe and the Idaho Department of Fish and Game (IDFG) have proposed this project—to add nutrients to the Kootenai River—to help improve productivity of the native species and are seeking funding from BPA for the project to help BPA meet its mitigation obligation for Libby Dam.

This environmental assessment (EA) is being prepared pursuant to the National Environmental Policy Act (NEPA) (42 U.S.C. 4321 *et. seq.*) and the Council of Environmental Quality (CEQ) Implementing Regulations, which require federal agencies to assess the impacts that their proposed actions may have on the environment. Based on information in the EA, BPA will determine whether the proposal significantly affects the quality of the human environment (see Section 4.1).

1.2 Background

The Kootenai River is currently nutrient poor and has been so for about 25 years. Although there are other factors influencing fish populations, low nutrient levels are partly responsible for the low productivity found in the river and part of the reason that important fish populations are not doing well. Nutrients that once flowed downriver from Canada are now being trapped in Lake Koocanusa behind Libby Dam. The separation of the Kootenai River from its historic floodplain (downstream of Bonners Ferry, Idaho) has also resulted in fewer available nutrients for river productivity. For example, the last viable white sturgeon year class to recruit to the Kootenai River population was produced in 1974. The burbot population in the Kootenai River has also declined sharply during recent decades; burbot sampling efforts by Idaho Department of Fish and Game (IDFG)

¹ Words in bold are defined in Chapter 6, Glossary.

in 1998-99 produced one fish during a 254-hour sampling effort (Paragamian, December 5, 2004).

Nutrient concentrations downstream from Libby Dam have dropped to very low levels. About 63 percent of the total phosphorus and 25 percent of the available nitrogen in the Kootenai River do not pass Libby Dam to enrich downstream reaches (Woods, 1982). Nutrients (especially P) are highly correlated with runoff events (P binds to suspended sediment) and thus the slower flows existing within Lake Koocanusa may cause as much as 95 percent of the sediment and its attached nutrients to settle behind the dam (Snyder, et al. 1996).

Nutrients in the river system stimulate algae growth, which aquatic insects feed on. Fish then feed on the aquatic insects and completes the aquatic food chain. Nutrient declines, therefore, can reduce the health and productivity of affected fish populations.

Through the Council's Fish and Wildlife Program (1994/2000) and with funding from BPA, the Tribe, IDFG, Montana Department of Fish, Wildlife, and Parks (MFWP), and others have been conducting Kootenai River fisheries research. This research has helped develop alternatives for meeting the need to enhance the river ecosystem, including the option of improving nutrient levels. BPA proposes to fund KTOI and IDFG to add liquid nitrogen and phosphorus to the Kootenai River from late June through September each year starting in 2005 to replace nutrients lost to the hydrosystem.

Adding nutrients to an ecosystem has been used successfully in other basins. Some examples:

- At Redfish Lake (Idaho), after nutrients in the form of sockeye salmon were all but eliminated in the early 1990s, the Shoshone-Bannock Tribes in partnership with Idaho Dept. of Fish and Game added nutrients from 1995-1998. As a result, zooplankton biomass increased 31%, sockeye density increased 26%, and Sockeye over-winter survival increased 192% (Griswold, et al. 2003).
- In the Adams River (British Columbia), the British Columbia Ministry of Environment implemented a nutrient restoration program in 1992-1997 to restore native rainbow and introduced brown trout populations. As a result of the nutrient restoration, algae increased up to 10 fold, bottom insects increased, trout densities doubled (not evident until the 3rd year of nutrient additions) (Wilson, et al. 1999a).
- In the Kuparuk River, Alaska, nutrients were added from 1983-1986 as a controlled test to determine a tundra river's response to human disturbance. The additions stimulated an increase in aquatic insect growth, as well as an increase in the growth rates of juvenile and adult grayling (Peterson, et al. 1993).
- In 1992, a large scale nutrient restoration program was implemented in the north arm of Kootenay Lake to try to restore declining kokanee populations. Decades of declining fisheries had resulted from major nutrient losses after two major rivers that feed the lake were dammed (the Kootenai and Duncan rivers).

Results of several years of nutrient additions showed an increase in all levels of the food chain (phytoplankton, zooplankton, and fish). The lake experienced an

increase in spawning kokanee from 300,000 in 1991 to 2.1 million in 1998. The lake has not experienced any negative effects from the nutrient replacement activities (Ashley, et al. 1997).

1.3 Purposes

The purposes are goals to be achieved while meeting the need for the project. These goals are used to evaluate alternatives proposed to meet the need. BPA will use the following purposes to select among the alternatives:

- Helps BPA fulfill its obligation to protect, mitigate, and enhance fish and wildlife affected by the development of Libby Dam in a manner consistent with the Council's Columbia Basin Fish and Wildlife Program.
- Enhances administrative efficiency and cost-effectiveness.
- Avoids or minimizes adverse environmental impacts.
- Provides the potential to achieve the following biological objectives:
 - Rehabilitates the post-development Kootenai River ecosystem.
 - Rehabilitates the ecosystem to reverse declining trends in native populations of kokanee, burbot, interior redband trout, and ESA listed populations of bull trout and white sturgeon.
- Helps improve a fishery important to the Kootenai Tribe of Idaho, consistent with BPA's general trust responsibility to the Tribe.

1.4 Other Planning or Projects in the Area

There are other efforts to improve the Kootenai River Basin that are being implemented or are planned for implementation in the future that could work in concert with this project. These include the following projects and their sponsors:

- Kootenai River White Sturgeon Studies and Conservation Aquaculture (Technical, Labor, and Data Interchange) (KTOI)
- Kootenai River Fisheries Recovery Investigations (Technical, Labor, and Data Interchange) (IDFG and KTOI)
- Reconnection of Floodplain Slough Habitat to the Kootenai River (KTOI) - project to evaluate potential slough sites for reconnection, estimate the ecological benefits, and implement reconnection.
- Implement Floodplain Operational Loss Assessment, Protection, Mitigation, and Rehabilitation on lower Kootenai River Ecosystem (KTOI)
- Mitigation for the Construction and Operation of Libby Dam (Montana Department of Fish Wildlife and Parks [MWFP]) - Implements watershed-based enhancement and fishery recovery actions to mitigate the losses caused by hydropower generation.

- Focus Watershed Coordination in the Kootenai River Watershed (Kootenai River Network and MWFP) - Fosters grass-roots public involvement and interagency cooperation for habitat restoration.
- Assess Feasibility of Enhancing White Sturgeon Spawning Habitat, Kootenai River, Idaho (IDFG; KTOI; U.S. Geological Survey) - project to design scenarios and assess feasibility to enhance white sturgeon spawning substrate.
- Kootenay Lake Fertilization. A large-scale project to restore declining kokanee populations (see Section 1.2) (KTOI).

1.5 Public Involvement

In fall 2004, BPA opened a scoping period to the public for this proposal. Scoping refers to a time early in a project when the public indicates what issues to consider in the environmental assessment (EA). A public meeting was held in Bonners Ferry, Idaho on December 13, 2004 to present information about the project, answer questions from the public, and accept comments. About 30 people attended the meeting. Additional scoping comments were accepted through January 28, 2005.

Written comments were received from twenty-two individuals or families. Comments covered many issues. The following is a general list of those issues:

- Location, size and visibility of the nutrient storage tanks and how trucks would access them for filling and how frequently.
- Concerns about the potential contamination of well water from nutrient additions to the river.
- Quantities and types of nutrients proposed as well as scheduling of additions, mixing, and monitoring.
- Concerns about the potential for algae blooms and the wrong kinds of algae.
- Safety measures to prevent nutrient spills at the tanks, the pipe and at the nozzle in the river, as well as cleanup procedures in case of spills.
- Monitoring plans and reports and how it will be determined if the project is a success.
- Mixing zone depth, predicted flow levels and potential harmful effects in the river.
- Current dam operations and how they might affect this project.
- Potential contamination from impurities in the nutrients.
- Concerns about the nutrients causing negative impacts to other living things in the river.
- Consider adding nutrients to other parts of the river.
- Increases in nutrients may not be enough. Consider also floodplain restoration, water quality improvements and simulating historic stream flows.

These and other issues were addressed in the preliminary environmental assessment.

In spring 2005, BPA requested comments from the public on the preliminary environmental assessment. The following eight individuals or agencies submitted comments:

- Brandon Smith, Kootenai National Forest
- Karl Denison, US Citizen
- Cleve Shearer
- Bob Castaneda, Kootenai National Forest
- Mark Ziminske, US Army Corps of Engineers
- Lois Albert
- Robert A. Petrusha
- John Robison, Idaho Conservation League

Copies of the comments submitted are in Appendix A. The comments covered a variety of issues. The following is a general list of those issues. Comments have been responded to with appropriate changes in this final environmental assessment.

- Describe mitigation and safety measures that would assure the security and provide maintenance of the storage tanks and other project facilities.
- Reduce potential fire hazards in the area.
- Concerns about allowing liquid nitrogen into the river.
- Use other options for enhancing fish harvest such as reducing fish harvest; resolving problems with side stream spawning habitat; entrapment of nutrients at Libby Dam; unnatural flows caused by operation of the dam; and water quality.
- Include more discussion of cumulative effects for the various wildlife and fish species and cultural resources, and provide more description of potential impacts to fish species.
- Provide more discussion of which activities are planned for federal versus private land.
- Concerns regarding potential visual impacts.
- Concerns about potential impacts to vegetation.
- Provide information regarding erosion control measures.
- Provide more information about how nutrient additions work in rivers.
- Confirm how the success of the project will be measured.
- Provide more information regarding how far downstream the effects of this project will be realized.
- Expand the project to include adding nutrients at Libby Dam and into Canada.

1.6 Related Documents

The following documents are related to this project and are available on request:

- Categorical Exclusion (CX), May 2004. Environmental review of a variety of research activities related to this project.
- CX, April 2005. Environmental review of activities related to pre-construction site preparation.

1.7 Decisions To Be Made

BPA is required under NEPA to examine the environmental effects of projects it proposes to fund and to determine whether effects are significant. If they are found not to be significant, a Finding of No Significant Impact (FONSI) would be issued and funding may proceed. If they are found to be significant, an Environmental Impact Statement (EIS) must be prepared before making a decision.

The U.S. Forest Service will decide whether to grant a special use permit for the temporary facilities on the Kootenai National Forest.

2.0 Proposed Action and Alternatives

BPA is studying two alternatives to meet the need for this project, the Proposed Action and the No Action Alternative.

2.1 Proposed Action

BPA is proposing to fund the Kootenai Tribe of Idaho, in partnership with the Idaho Dept. of Fish and Game, to add nutrients (nitrogen and phosphorus) to the Kootenai River ecosystem for up to 5 years. The goal of this project is to enhance native fish populations and river health affected by the construction and operation of Libby Dam. The nutrients are expected to stimulate production in the Kootenai River's depleted food web and reverse downward trends in fish populations such as trout, kokanee, mountain whitefish, burbot, and white sturgeon. These agencies propose to add controlled amounts of nitrogen and phosphorus during the natural river-growing season (late June – through September). The nutrients would be added to the river in Idaho through a system of gravity-fed tanks and outflow pipes on a site near Leonia, Lincoln County, Montana (see Figures 1, 2, 3A and 7) and would disperse with river flow (Figure 4). The nutrients would be added to the river from the Montana side, across the Montana/Idaho state boundary, into Idaho state waters. Although supportive of the project goal, representatives of the State of Montana have requested that the nutrients not be discharged into their waters (Dunnigan, November 2003). Montana has more recruitment in the tailrace below Libby Dam than Idaho, the tailrace fishery is much more productive, and densities of trout are higher. Currently, the rainbow trout density in the Idaho reach of the Kootenai River is an order of magnitude lower than in the Flower-Pipe reach of Montana. The average age-2 and older density in the Flower-Pipe reach was 662 trout/km for 1993, 1994, and 1999, while the density at Hemlock Bar, Idaho for the same years averaged 47 trout/km (Paragamian, 1995a and b; Downs 2000; Walters and Downs, 2001; J. Dunnigan, 2003). Lower densities likely contribute to the lower angler catch rates in Idaho.

This proposed project would be temporary and would be monitored during the application period, then re-evaluated after 3-5 years. If the project has positive results, the International Kootenai River Ecosystem Recovery Team (IKERT) would discuss whether to propose continuing the program. The IKERT includes the following organizations and individuals on the recovery team: the Kootenai Tribe of Idaho, IDFG; MFWP, British Columbia Ministry of Environment, Land, and Parks (BCMELP); Army Corps of Engineers (Corps); and the Universities of British Columbia (UBC), Idaho (UI), and Idaho State (ISU). Any continuation of the program would be subject to further environmental analysis and documentation.

2.1.1 Nutrients, Mixing Zone, and Affected Waters

Liquid urea ammonium nitrate (28-0-0) and ammonium poly-phosphate (10-34-0) would be added to the river from a tank storage and delivery-pipe system. (The three numbers refer to the percentage of nitrogen, phosphorus, and potassium in the nutrient solution.) About 16 L/hr of phosphorous and 95 L/hr of nitrogen (depending on flow year) would be added over the treatment season. The ratio of nitrogen and phosphorus to

be added (approximately 20:1 N:P) was derived based on the nutrient levels in an unaltered, healthy river, and reflect the standard ratios that would most likely be in the river without the influence of Libby Dam and other human activities, and a maximum amount that would render the additions ineffective. The turbulence caused by the jet of fluid exiting the pipe would do the initial mixing (dilution), and the turbulence from the moving water in the river would continue to mix the nutrients into the water. The effective distance of the treatment would be from about the Montana border (**river kilometer** [rkm] 276) downstream to Bonners Ferry (rkm 248; Ashley, July 21, 2004). The river contour in this area is a good location for treatment because it is shallow. Shallow stretches of river are better nutrient treatment locations than deep areas because adequate light can penetrate to the river bottom allowing algae growth to occur. Since the effective distance of the nutrients matches the distance of river that managers feel the nutrients would work best (i.e., the potential **autotrophic and nutrient-spiraling reach**), only one nutrient drip station would be needed to effectively treat the Idaho portion of the Kootenai River.

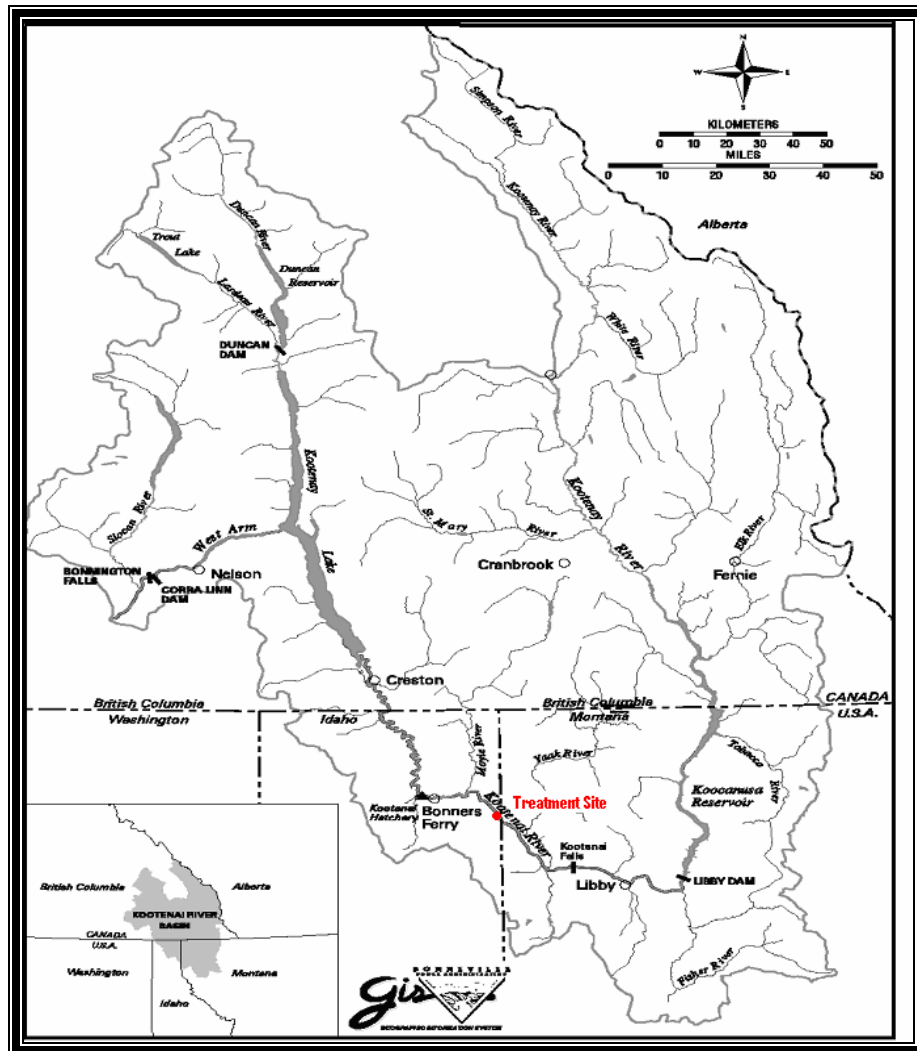


Figure 1 Kootenai River Basin and Treatment Location

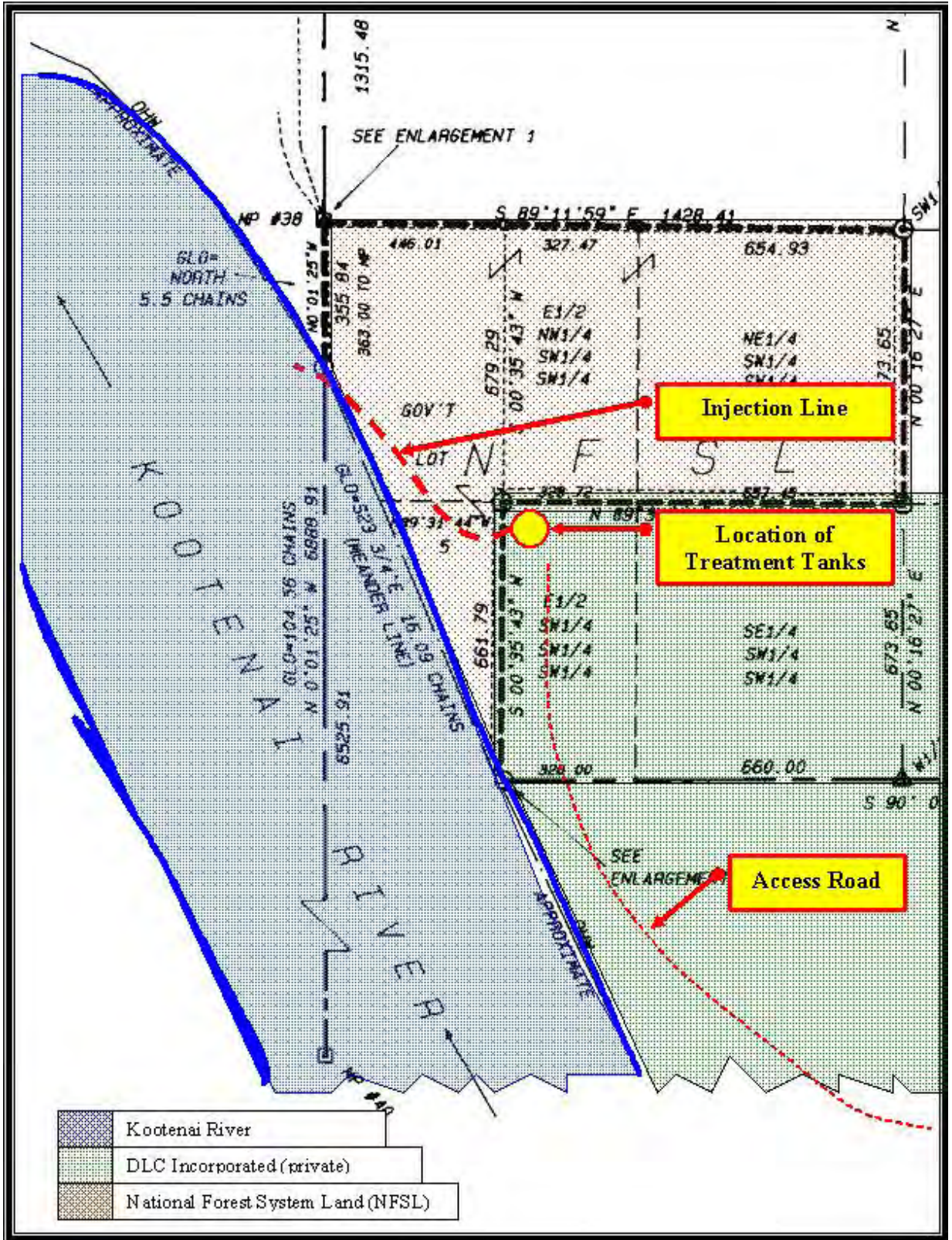


Figure 2 Proposed Action Site Map

Figure 3 Schematic of the Proposed Nutrient Enrichment System

[This figure was removed.]

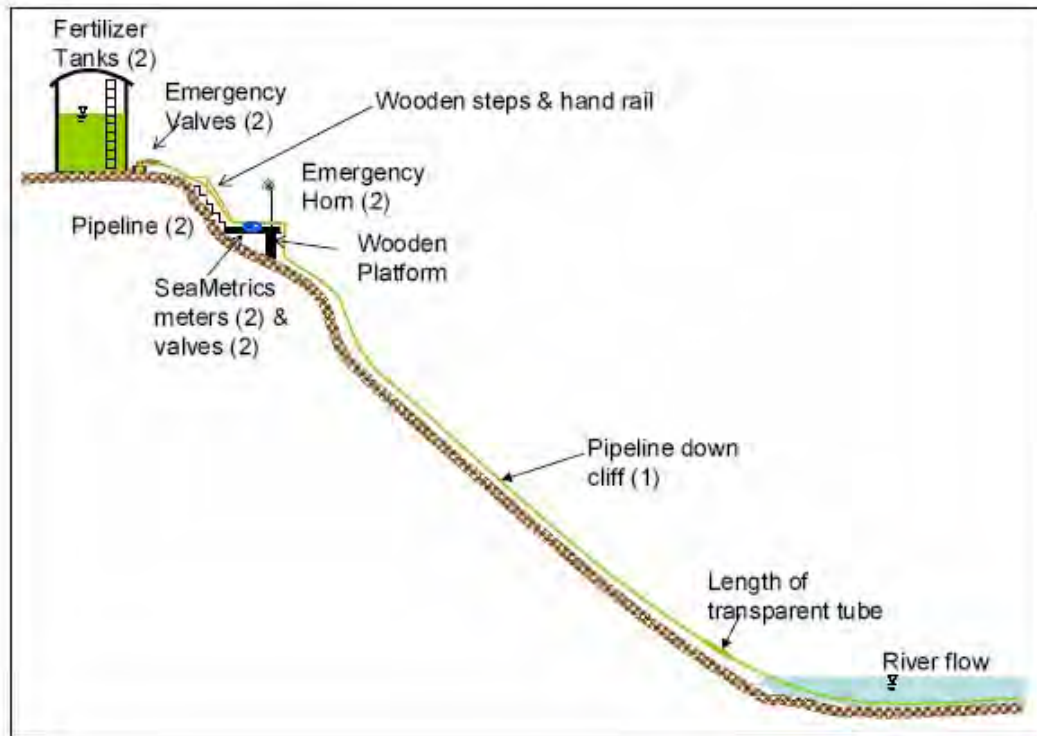


Figure 3A Nutrient Application Pipeline and Tank System for Gravity-Fed Flow

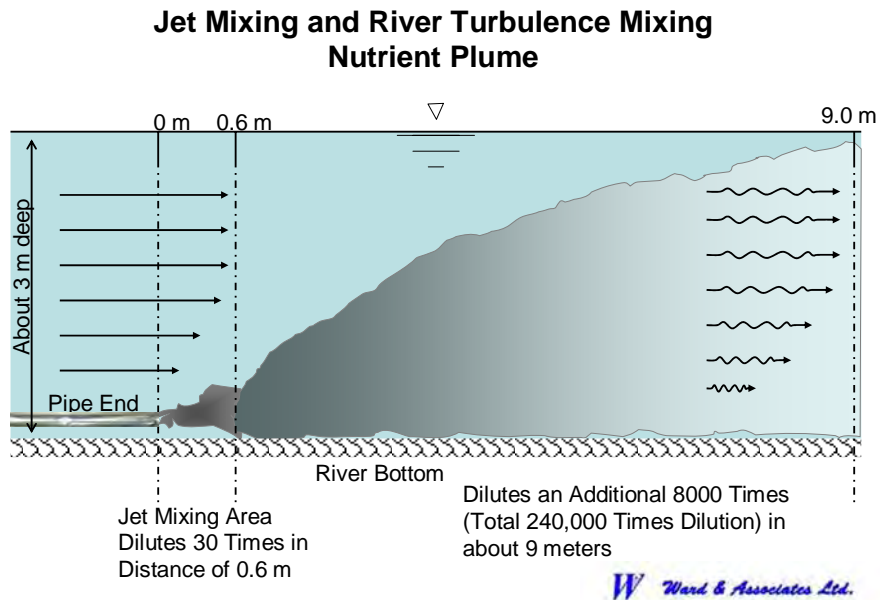


Figure 4 Schematic of the Mixing Zone

Benefits from indirect effects of the nutrients downstream of this area, such as increased insect and algal biomass, could help fisheries in the lower river reach from Bonners Ferry to Kootenay Lake, B.C.. See the Biological Assessment (available on request) for detailed information about mixing zone determinations.

2.1.2 Access Road, Holding Tanks and Pipeline, Operations and Maintenance

The proposed nutrient treatment site is near Leonia, Lincoln County, Montana (see Figures 1, 2, and 7). This site is just north of the Leonia Bridge and east of the Montana/Idaho state border. The access road to reach the site crosses Kootenai National Forest System Land and private property. Part of the access road, the Leonia Road, travels from Highway 2 and descends to the Kootenai River at a now impassable bridge. Before Leonia Road begins its descent from this bench above the river, an un-improved road forks to the north along the bench at about 610 m of elevation on property owned by DLC, Inc. (a private landowner). This road continues to the proposed location for the treatment tanks, which is on private property.

An area about 20 x 30 m would be needed for the treatment equipment. Minimal construction would be needed. The access road would be improved from the fork at Leonia Road, approximately 1 km to the edge of the bench where the nutrient tanks would be. The access road would require gravel fill to allow truck access (see Section 1.6). A truck turn-around for refilling the tanks would be made near where the tanks would be placed. The truck turn-around site would require tree removal, leveling, and gravel fill.

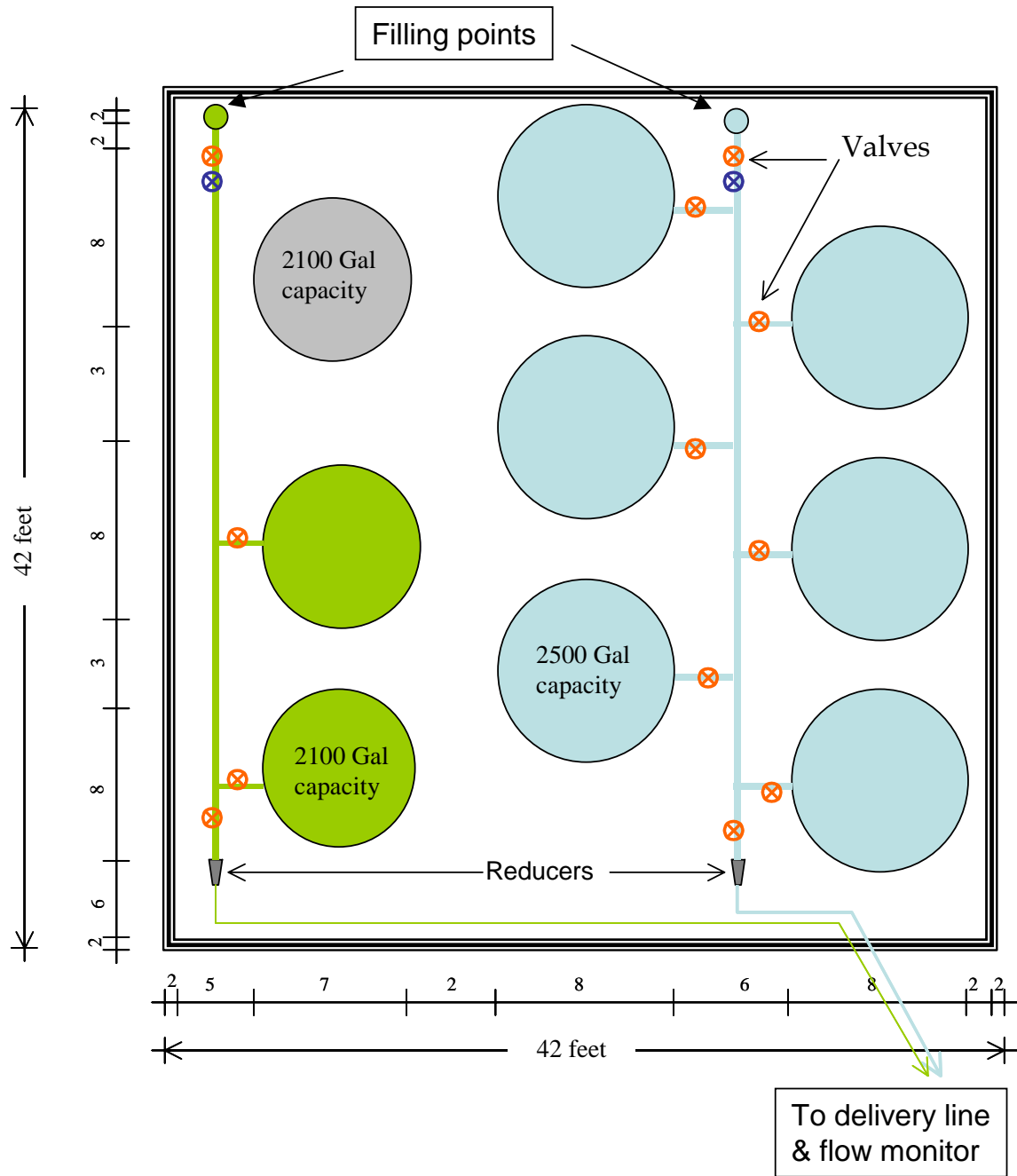
A gravel pad would be constructed for the nine treatment tanks. Of these tanks, two slightly smaller tanks (7,947 L each) would be used for phosphate storage, and there

would be seven additional tanks (9461 L each) (see Figure 5). One of these seven has two purposes: it would be used for storing water for clean-up following the treatment season, and it would be used to store any spilled or leaked nutrients if a leak occurs. The other six tanks would be used for nitrate storage. The pad would be about 12.8 x 12.8 m (3 tanks long x 3 tanks deep perpendicular to the river rim). To contain any leaks that may occur in the holding tanks, the holding-tanks would have a berm around them created with sandbags or concrete lock blocks (0.6 m x 0.6 m x 1.2 m). The tank pad would be covered first with a layer of sand, then a felt matt, then with a thick plastic liner. Any material that might leak from a tank would be contained by the plastic liner to assist with product recovery if a spill occurs. The tanks would be filled at the beginning of the treatment season, then refilled 2-4 times while the project is underway (July – September), depending on need.

The tanks would be surrounded by a chain-link fence with neutral-colored blinds and the individual tanks would be a color that would blend into the surrounding area to lessen visual effects and decrease the risk of vandalism. To prevent wind damage and reduce the risk of fire, the area around the tanks would be cleared (1-2 average tree heights). At the end of each treatment season (September), the tanks would be emptied.

About 70 m of High Molecular Weight (HMW) plastic (25-50 mm) pipe would extend from the tanks, following the slope of the land above ground down to the riverbank. An additional 250 m of pipe would run at an angle from the riverbank to the river bottom to deliver nutrients (see Figure 2). The pipe would be secured to the bottom of the river (about 2-5 m deep at the time of treatment) with concrete weights. The proposed pipe is relatively flexible and will conform to the contour of the riverbank. About 3/4 of the pipeline would be on National Forest System Land and the remaining amount of pipe would be below the high water mark (state of Idaho-managed land). After the treatment season, the pipe in the river would be removed using a boat and personnel on the riverbank and stored at the IDFG field station on the Kootenai National Wildlife Refuge. The remaining pipe on the slope would not be removed each year. After the treatment is delivered, the pipe on the slope would be emptied and left in place to reduce disturbance on the steep slope. Additional lengths of hose would be available for minor repairs should any leaks occur in the HMW delivery line.

A 3 x 2 m wood platform about 10 m downhill from the main tank location on private land would house control valves and the main safety alarms for the application system. The battery, gate valves, and sea-metric meters would be housed in a locked, metal rectangular box on the wood platform (see Figure 3A). Two photovoltaic (PV) panels would be on the platform. These panels would provide power to the meters. The panels are about 0.5 m x 2 m.



Source: Ward and Associates

Figure 5 Preliminary Tank Layout

An alarm system on this platform would alert the on-site technician if the flow exceeded or was considerably lower than the prescribed application amounts. The technician would check the valves for damage or constrictions. An additional safety feature would be around the vacuum break area called the vacuum break box. This box would be locked to reduce the risk of tampering with the flow application. A final safety fence (chain link) would also be added around the lower platform to reduce any attraction to the site from people recreating in the area.

2.1.3 Housing

During the 10-12 week treatment period, a field technician would live on site in a fully contained (own water and sewer) 24 ft. long mobile trailer. The technician would be responsible for the operation of the treatment system.

2.1.4 Security and Safety

The onsite technician would use a footpath (about 3 m wide and 30 m long) 2-4 times a day to inspect the pipes from the holding tanks, the flow meters and the wood platform transition box. The holding tanks would have a berm around them created with sandbags or concrete lock blocks; the tank pad would be ~~and then~~ covered with a layer of sand, a felt matt, and a thick plastic liner to contain any leaks that might occur. The berm and liner around the tanks could capture the entire contents of a full tank if necessary and hold them until the product could be pumped out. Should leaks occur, a submersible pump powered by a 5000-watt generator on site would pump the material into a non-damaged holding tank. If there are any nutrient leaks into the containment area, the liner would be properly cleaned and the waste disposed of. No major leaks should occur because an automated switch would shut off flow should nutrients stream faster than programmed (indicating a break in the line). The shutoff switch would be above the wood platform and the outlet nozzle. If the pipeline has any minor leaks and vegetation is reduced nearby (the opposite could occur), the forest botanist would be consulted for re-vegetation recommendations. Following the treatment season, the tanks would be emptied and the pipe in the river removed until the following season.

The tank area would be enclosed by a chain link fence with neutral colored blinds to reduce any attraction to the site from people recreating in or along the river or upland bench.

A new gate would be installed on the improved access road to limit access to only the landowner and authorized personnel.

During angler surveys performed during the treatment seasons, informational pamphlets about the project would be handed out. These pamphlets would also be available at boat launches and other areas used by recreationists and the general public. Signs would be placed near the outlet pipe to provide information and alert river users of elevated nitrate concentrations at the pipe nozzle prior to mixing (1-2 m; see Section 2.1.1 for more information on mixing zone concentrations).

2.1.5 Power Requirements

Two medium-sized photovoltaic (PV) panels rated at about 100 watts would operate the application system. They would be on the wood platform (see Figure 3A). A deep discharge battery(s) rated at approximately 180 Ah would provide sufficient storage to supply the system during periods of cloudy weather. There would also be a 5,000-watt generator on-site for emergencies. The mobile trailer would have two batteries on the front that can be recharged with the generator.

2.1.6 Research and Monitoring

During the treatment season, meters would measure many types of data for project managers including the dosing rate for each nutrient, the water temperature and river surface level, and the sampling time. The data would be sent to KTOI and IDFG daily so that managers could maintain consistent nutrient concentrations in the river. Data would be transmitted by satellite to project managers by the equipment depicted in Figure 6.

In addition, the Tribe would monitor water chemistry and assess algal production. The Tribe has six bio-monitoring sites between the Yaak River confluence and Bonners Ferry. These sites are already comprehensively sampled for water chemistry, water-borne metals (from water samples), algae, and benthic macroinvertebrates. Monitoring for this project would supplement the monitoring already occurring (Hoyle, February 2005).

IDFG and KTOI personnel would monitor at 11 sites. The first site would be 1 km upstream of the dosing site, followed by a sample collected every 1 km starting at the dosing site. River km 277 through rkm 266 would be sampled weekly for water chemistry, algal taxonomic structure, and blue-green algae production to evaluate the results against specific criteria to test the effects of the treatment (Hoyle, February 2005 and Anders, et al. 2005; available on request).

To evaluate the success of the nutrient additions, general criteria that focus on data trends at each **trophic** level over time would be used. More specifically, the post-treatment data would be evaluated against historical information available, current pre-treatment biomonitoring data collected since 2001, and the desired criteria that researchers from both agencies (KTOI and IDFG) would favor this experiment moving towards. The endpoint or goal of the nutrient restoration project is to enhance and help restore fish communities in the Idaho reach of the Kootenai River and improve angler fishing success. Although restoration of all the fisheries is not expected or required, the nutrient restoration of this proposal would be considered successful as long as the results demonstrate trends toward the desired criteria. Conversely, should trends be viewed as negative, the experiment may be discontinued and re-evaluated by IKERT.

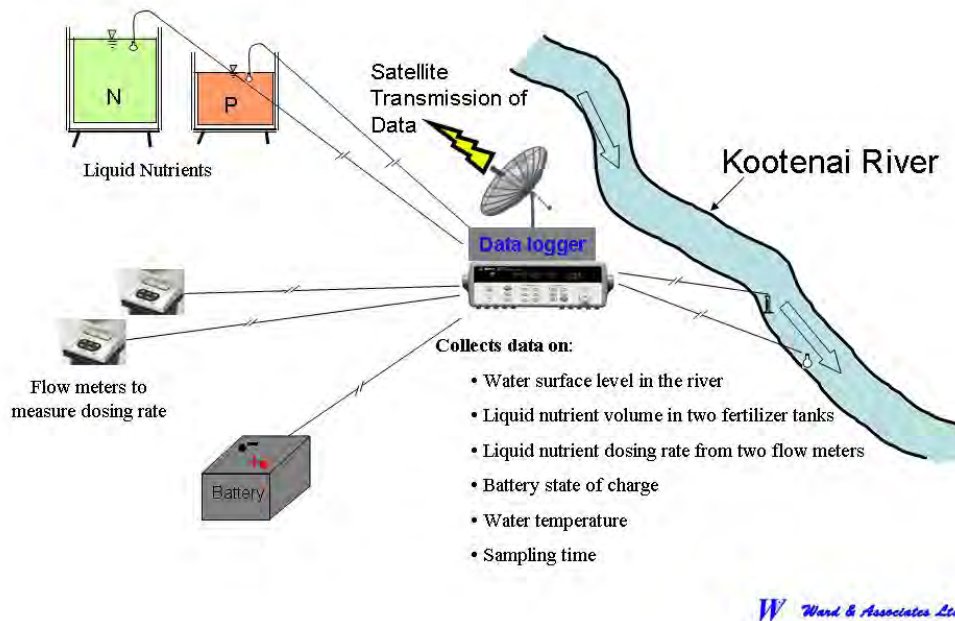


Figure 6 Schematic Layout of Data Logger and Measuring Devices

Weekly water quality testing would allow managers to determine potential cost-benefit factors to determine if the objectives are achievable. The KTOI and IDFG are working directly with nutrient restoration experts (e.g., Ken Ashley, British Columbia Ministry of Land Water and Air) and other ecologists on the International Kootenai River Ecosystem Recovery Team to determine the exact formulation of nutrients needed to achieve the set objectives.

Annual monitoring of the fish community (e.g., relative species abundance and catch-per-unit-effort [CPUE]) would allow the IKERT steering committee to either continue or halt the nutrient restoration program based on “negative threshold” values. Therefore, once these species increase to levels that may affect salmonid production (or other sensitive species such as Kootenai River white sturgeon), or the biomass proportion of salmonid:non-game fish becomes unacceptable (i.e., maximum negative target), the project would be re-evaluated. By the very nature of ecosystem complexity, however, it is difficult to predict such outcomes. In the likelihood of non-game fish species increasing, salmonid populations may also increase to a level that creates a top-down control on these non-game fish communities. Careful evaluation of the trophic interactions within the test period should reveal if species shifts revert back to populations dominated by salmonids (Partridge, 1983).

Adaptive Management

Management criteria of the nutrient additions have been set up to try to safeguard against any long-term deleterious effects of the treatments (see Table 1). In other words,

should managers see nutrient additions resulting in potentially negative effects or no apparent benefit (especially within the fish community), the experiment would be discontinued and re-evaluated by the IKERT. Table 1 lists a simplified version of the adaptive management options that may be taken once certain effects are seen in the river. The project sponsors would develop an operations manual and recordkeeping system to collect data on nutrient additions and effects over time, and adapt the project to respond to the results. Should managers see nutrient additions resulting in potentially negative effects, the experiment would be discontinued and re-evaluated by the IKERT.

The detailed monitoring plan is available on request.

Table 1 Potential Outcomes and Possible Management Actions

Potential Outcomes	Trophic Level In Food Web			
	Primary Productivity (Algae)	Secondary Productivity (Aquatic Insects)	Tertiary Productivity (Fish)	Management Action
Outcome a	No increase	No increase	No increase	Stop, re-evaluate experiment
Outcome b	Increases	No increase	No increase	Stop, re-evaluate experiment
Outcome c	Increases	Increases	No increase	Stop, re-evaluate experiment
Outcome d	Increases	Increases	Increases in non-target species only	Stop, re-evaluate experiment
Outcome e	Increases	Increases	Increases in target (and possibly non-target) species	Continue experiment after evaluation period

2.1.7 Site Restoration

If, through the adaptive management process, a decision is made to discontinue this project, the temporary equipment would be removed. The National Forest System Land would be restored to its original condition. The tanks, wood platform, pipes and mobile trailer on private land would likely be removed and the area restored depending on the landowner's wishes. If the landowner allows the tanks to remain on his property, the tanks would be emptied and cleaned so that all nutrients would be removed.

2.2 No Action Alternative

The No Action Alternative is the no funding alternative. BPA would not fund the research and temporary placement of nutrients into the Kootenai River.

2.3 Alternatives Considered but Eliminated from Detailed Consideration

2.3.1 *Alternative Treatment Sites*

Four sites near the Montana-Idaho border area were considered for the treatment site (see Figure 7). Three sites are in Montana and one is on the Idaho side of the border; all sites are on the north side of the Kootenai River. A fifth site, located in Idaho and on the south side of the river, was briefly considered, but was eliminated early in the selection process because the pipeline would have to cross an active railway line.

Site 1A is the Proposed Action.

Site 1B was eliminated because road construction costs were much higher than site 1A and additional federal property had to be crossed.

Site 1C was eliminated because road construction costs were much higher than sites 1A and 1B, and additional federal property had to be crossed.

Site 2 was eliminated because nutrients would be added well within the boundary of the state of Montana, which does not want nutrients added to its waters during this project (Dunnigan, November 2003).

2.3.2 *Nutrient Management Potential of Libby Dam Operation*

During the scoping period, some commenters suggested that Libby Dam be operated to increase the nutrients below the dam. Although this may be possible in the future, current dam design and operations preclude this as an option to increase nutrients in the Idaho reaches of the Kootenai River.

Creation of Koocanusa Reservoir by the construction of Libby Dam has altered river dynamics at multiple scales, and has created aquatic and terrestrial environments that have continually adapted to these altered dynamics since the reservoir initially began filling. Among these alterations has been the virtual cessation of nutrient loading from the upper Kootenai/Idaho watershed to the lower watershed. The downstream nutrient loading effects of dam construction were delayed for several years due to the initial loading of previously terrestrial nutrient sources into the newly created reservoir simply by the process of inundation of those environments; this effect is common when reservoirs are created.

There is an initial increase in available nutrients in newly inundated reservoirs, often expressed in increased fisheries biomass and growth. In addition to the initial increase in productivity in the reservoir, a portion is passed through the dam and is available downstream. As the reservoir ages and nutrient supplies are depleted, the reservoir environment becomes less productive, and thus the availability and passing of nutrients through the dam to the downstream river reaches declines. The nutrient depletion in the Kootenai River over time has been exacerbated by the gradual and steady decline of productivity in Koocanusa Reservoir over the last 30 years.

The dam is equipped with a “selective withdrawal” system, which allows operators to optimize the temperature river below the facility, within certain operational constraints. This system is governed by guidelines developed to enhance growth of trout,

as well as other aquatic organisms. However, operation of this system cannot bypass large amounts of nutrients to aid in-river productivity, so the selective withdrawal system cannot be used to influence availability of P and N below the dam. This alternative was eliminated from further consideration.

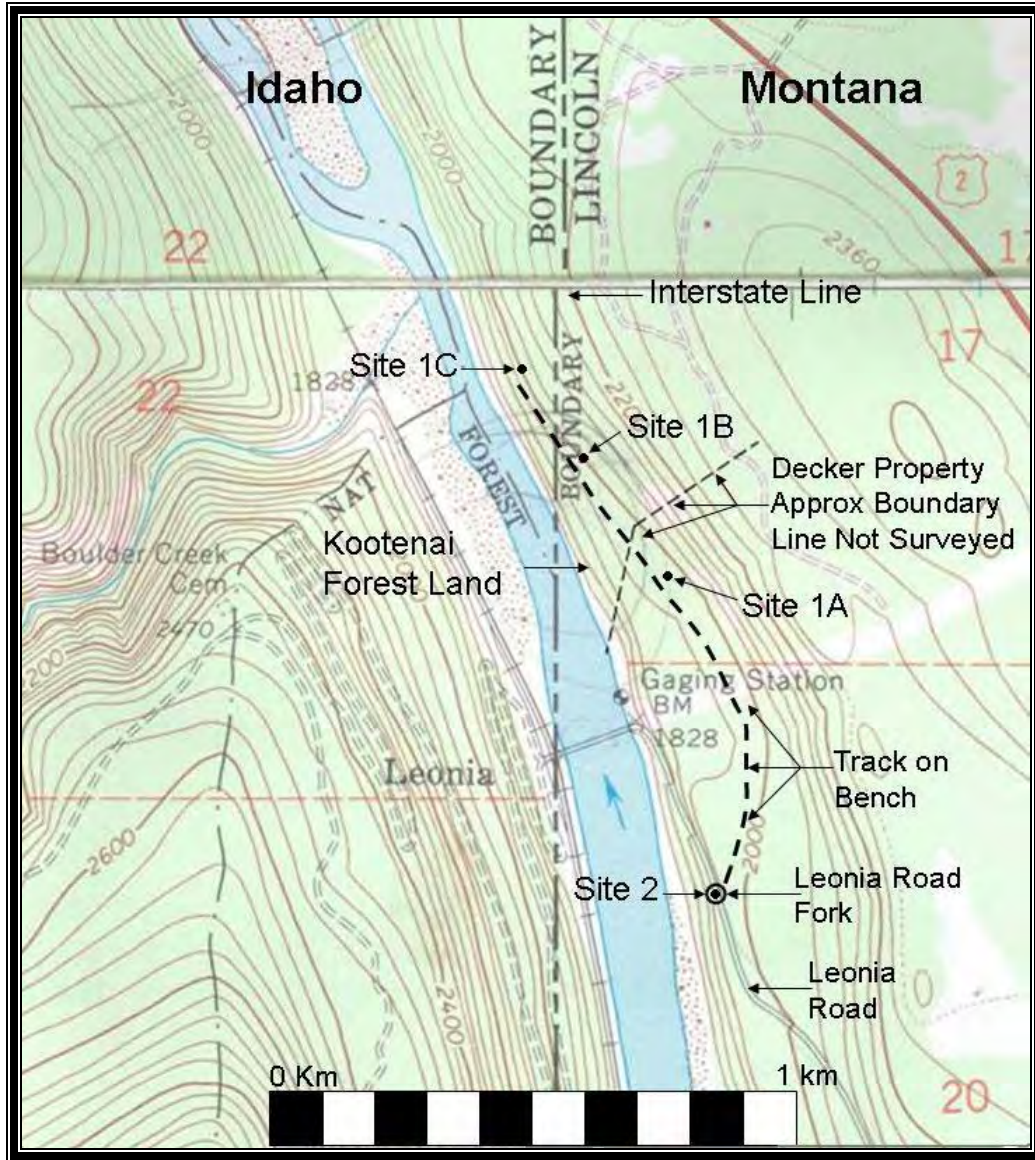


Figure 7 Alternate Treatment Sites. Site 1A is the Proposed Action.

2.4 Comparison of Alternatives

This section compares the alternatives described in this chapter using the project purposes and the predicted environmental impacts. Tables 2 and 3 summarize the environmental impacts and compare the alternatives.

Table 2 Environmental Impacts of Alternatives

Environmental Resource	Existing Conditions	Proposed Action	No Action Alternative
Fish and Wildlife	Variety of animals and habitats. Threatened and endangered fish and mammals.	Animals likely to move during construction. If successful, treatment would benefit the river ecosystem, including threatened and endangered species. No threatened or endangered species would be adversely affected.	No <u>new</u> impacts expected. <u>Current impacts to the Kootenai River ecosystem would continue.</u>
Land Use	Private timberland and National Forest System Land.	Access road improved. Some trees removed for gravel pad for tanks. Security measures proposed to prevent impacts from accidental leaks. Temporary equipment used, some removed each season.	No impacts expected.
Visual Resources	Rural, scenic area with river and mountain views. High visual quality should be maintained.	Tanks should not be visible from the river. Pipe would blend with rock and vegetation. Tanks would be colored to blend with local vegetation. A chain-link fence with neutral blinds would screen the area. <u>Viewshed of river users may be altered slightly.</u>	No impacts expected.
Recreation	Area has many recreation opportunities, but none on site. Fishing, boating, hiking in general area.	Pipe in the river would be submerged and would not pose a hazard and would be removed after treatment. If ecosystem improves, fish and other wildlife may increase for recreation.	No impacts expected.
Water Resources	River is nutrient deficient. The river is used for municipal and residential water.	Water quality would be monitored. No impacts to human health are expected. Nutrients may improve river productivity.	<u>No new impacts expected. Current impacts to the Kootenai River ecosystem would continue.</u>
Wetlands	One riverine wetland along the shore at the treatment site.	<u>No construction would occur in the wetland. No wetlands would be affected.</u>	No impacts expected.
Floodplains	The tank site is outside the floodplain. The riverbank is bounded by steep slopes.	No floodplains would be affected.	No impacts expected.

Environmental Resource	Existing Conditions	Proposed Action	No Action Alternative
Cultural Resources	Native American groups and bands frequently used the area.	No prehistoric resources found. A portion of an historic road would be improved with fill material, but would not be adversely impacted.	No impacts expected.
Vegetation	Vegetation includes mostly second growth timber. One listed plant.	Some trees would be removed at the tank site. Low-growing vegetation would be disturbed. Disturbance would be minor. No impact to the listed plant.	No impacts expected.
Soils	Existing soils have low fertility, and steep slopes.	Soils would be disturbed as vegetation is removed for construction. Erosion may increase temporarily. Erosion control measures would be used.	No impacts expected.
Noise, Public Health and Safety	Area of private property and National Forest System Lands. Traffic and railroad noise occur frequently.	Noise and human disturbance would increase temporarily. Tanks would be refilled using motorized vehicles 2-4 times per season. A berm would surround the tanks to control potential leaks. Onsite personnel would provide security, as would fencing, an alarm and a locked gate. Warnings would be posted for recreationists using the river during the treatment season.	No impacts expected.

Table 3 Alternatives Compared to Project Purposes

Project Purposes	Proposed Action	No Action Alternative
Helps BPA fulfill its obligation to protect, mitigate, and enhance fish and wildlife affected by the development of Libby Dam in a manner consistent with the Council's Columbia Basin Fish and Wildlife Program.	Provides a potential enhancement of the Kootenai River ecosystem, which was affected by Libby Dam. Is consistent with the Council's Program.	Does not help BPA fulfill its obligation.
Enhances administrative efficiency and cost-effectiveness.	Uses temporary facilities to lower overall costs. Equipment can be sold or used for other projects if treatment is unsuccessful.	No cost alternative.
Avoids or minimizes adverse environmental impacts.	Monitoring the success of the treatment is part of the project so treatment can be suspended if adverse impacts are created. Use of temporary equipment reduces land disturbance. Mitigation provided for security, safety and visual resources reduces impacts.	No <u>new</u> environmental impacts. Current impacts to the Kootenai River ecosystem <u>would</u> continue.
Provides the potential to achieve the following biological objectives: Rehabilitates the post-development Kootenai River ecosystem; rehabilitates the ecosystem to reverse declining trends in native populations of kokanee, burbot, interior redband trout, and ESA listed populations of bull trout and white sturgeon.	The treatment, if successful, would contribute to the rehabilitation of the ecosystem.	The biology of the Kootenai River system would remain as it is today, with reduced levels of nutrients.
Helps improve a fishery important to the Kootenai Tribe of Idaho, consistent with BPA's general trust responsibility to the Tribe.	Provides potential benefit to the Kootenai Tribe of Idaho if the fishery is improved.	The fishery would not improve without other projects or measures.

3.0 Affected Environment and Environmental Consequences

3.1 Fish and Wildlife

3.1.1 Affected Environment

Many species of birds, fish, and mammals are found in the project area, including large mammals such as elk, moose, mountain goats, whitetail and mule deer, black bear, and mountain lion. Many nongame species are also in the area and include a variety of songbirds, weasel, mink, beaver, otter, flying squirrel and porcupines (USFS, 1987).

Varied habitats can be found for the diverse mix of animals. Some **threatened** and **endangered** animals may also exist in the vicinity of the proposed project (see Section 3.1.3).

The Kootenai River aquatic ecosystem has been degraded due to wetland loss and impoundment during the last century (see Section 1.2 and the Kootenai River Subbasin Plan, [KTOI and MFWP, 2004]). Nutrients levels have decreased, and have adversely affected the populations of fish and invertebrates in the river. Lower nutrients causes a reduction in food production, which could be a major contributor to poor fish production over the past two decades (Stockner, 2003).

3.1.2 Impacts of the Proposed Action

Adding nutrients in the river system is expected to stimulate algae growth, which aquatic insects feed on. Fish then feed on the aquatic insects and would, if successful, help rehabilitate the post-development Kootenai River ecosystem and reverse declining trends in native populations of kokanee, burbot, interior redband trout, and ESA-listed populations of bull trout and white sturgeon (see Section 3.1.3). Success of the project would be determined through extensive monitoring for all levels of the ecosystem including algae, aquatic insects and fish. There are other projects in the Kootenai River Subbasin whose purposes are to benefit fish populations (see Section 1.4). If these projects, in concert with this project, are successful, some fish populations that have declined would begin to return to previous levels.

Possible negative effects of the proposed action to the existing fish communities in the upper Kootenai could include a higher proportion of biomass in non-game fish (such as large-scale suckers). Nongame fish could increase to levels that may affect salmonid production (or other sensitive species such as Kootenai River white sturgeon).

Management criteria for nutrient additions have been set up to try ~~to~~ safeguard against any long-term deleterious effects of the treatments (see Section 2.1.6 and Table 1). In other words, if negative effects are discovered during monitoring, then project managers would ask IKERT to re-evaluate and suspend the project if necessary.

Animals may be disturbed by temporary construction noise and human activity in the area. Animals would likely move to other areas during and after construction and treatment where similar habitat is available nearby.

3.1.3 Threatened and Endangered Species

The U.S. Fish and Wildlife Service identified federally-listed species that may occur in the project area (USFWS, October 21, 2004). See Table 4.

Table 4 ESA-Listed Species in Project Area

Species	Category	Expected Occurrence
Kootenai River White Sturgeon (<i>Acipenser transmontanus</i>)	Endangered	Transient
Bull trout (<i>Salvelinus confluentus</i>)	Threatened	Migratory/Resident
Bald eagle (<i>Haliaeetus leucocephalus</i>)	Threatened	Resident/Transient
Grizzly bear (<i>Ursus arctos horribilis</i>)	Threatened	Resident/Transient
Gray wolf (<i>Canis lupus</i>)	Endangered	Resident/Transient
Canada lynx (<i>Felis lynx canadensis</i>)	Threatened	Resident/ Transient
Ute ladies'-tresses (<i>Spiranthes diluvialis</i>)	Threatened	Resident
Critical habitat for Kootenai white sturgeon	Designated	
Source: US Fish and Wildlife Service, October 21, 2004.		

Kootenai River White Sturgeon

Kootenai River white sturgeon are a “distinct population segment” that can occupy the Kootenai River from Kootenai Falls, Montana (50 rkm downstream of Libby Dam) downstream to the outflow of Kootenay Lake at Corra Linn Dam, British Columbia. This distinct population is one of 18 landlocked populations in the Pacific Northwest (USFWS 1999).

Juvenile or adult white sturgeon sightings in the project area are rare and unsubstantiated. An angler reported catching a 50cm sturgeon somewhere between Bonners Ferry and the Yaak River in Montana in 1981 (Partridge 1983). Some additional historic sightings have been reported, but few are verifiable. No other white sturgeon have been documented near Leonia (Paragamian, January 2, 2005).

Effects of the Proposed Action on White Sturgeon

Kootenai River white sturgeon are uncommon within the habitat of the project area. Increases in river productivity may lead to increased food supplies which may then increase survival, growth rates, and body condition of larvae, juveniles, and adults in downstream reaches where they currently reside. The Proposed Action may greatly improve food resources and survival of early life stages as seen in other studies of nutrient restoration (Larkin et al., 1999; Wilson et al. 1999a).

It is difficult to speculate the pathway of nutrients and how specific fisheries would be affected in the long term and predict the outcome. However, several considerations

should be taken into account as to possible indirect effects on early life history functions and survival to Kootenai River white sturgeon. Although the Proposed Action would presumably increase larval survival through the critical transition from yolk sac to feeding in the open environment, consideration of predation on eggs should be taken into account if non-game, egg-preying species increase. One primary concern that has been considered is the direct increase of predators such as large-scale suckers and northern pikeminnow on Kootenai River white sturgeon eggs. However, there is no conclusive evidence that egg predation is a limiting factor or that it could be. In addition, there is no information available to suggest that food production is a limiting factor for sucker recruitment and density. On the other hand, white sturgeon adults are a top predator and could use the increased biomass of the aforementioned non-sport fish as forage. In relation to sight feeding predation on eggs, increased food production may reduce water visibility in the reach below the study zone, which may in turn reduce sight feeding predation of all early life stages of sturgeon.

Bull Trout

Columbia River populations were listed as a threatened species on July 10, 1998. Although recently proposed, no critical habitat has been designated for bull trout in the Kootenai drainage.

The Kootenai River is known to have at least one migratory population of bull trout consisting of **fluvial** fish (Walters and Downs 2001; Walters 2002). In the Kootenai River in Idaho, bull trout usually start upstream migrations during June and July (IDFG unpublished data).

Bull trout densities in the Kootenai River mainstem appear low, based on electrofishing catch rates (<1 bull trout/h) and angler catch rates (< 0.05 fish/h), but appear distributed throughout the Kootenai River in Idaho (Walters 2002, 2003; Hardy 2003; IDFG unpublished data). In addition, adult fish are known to migrate through the treatment area enroute to O'Brien Creek. The Boulder Creek tributary, which enters the Kootenai River just downstream of the treatment site, historically served as a bull trout spawning area. Bull trout **redd** surveys have been conducted on Boulder Creek from 2000-2004, with two redds found both in 2001 and 2002 (Walters 2003, 2004).

Effects of the Proposed Action on Bull Trout

If an individual bull trout were in the immediate vicinity of the nutrient outflow pipe, it could be displaced slightly for the duration of the treatment. However, no adverse effects on spawning migrations are likely. In addition, treatment dilutions are well within safe water consumption standards (human) within 2m of the pipe (human standards are more conservative than for aquatic organisms). Because tanks are located on the rim away from the river's edge, and an emergency alarm and shut-off valves would be in place, no spills directly into the Kootenai River are anticipated.

Indirect effects on bull trout may include increased biomass, length at age, and fecundity as a result of increased nutrient levels. Other studies of nutrient restoration programs have clearly shown these anticipated benefits to fish populations (Peterson, et al. 1993; Wilson, et al. 1999b). No loss of habitat for bull trout would occur from this project. No potential take exists for bull trout.

Bald Eagle

Bald eagles are both yearlong residents and winter visitors in northern Idaho. Bald eagles nest almost exclusively in live trees usually within one mile in line of sight of a large river or lake. The most typical nesting trees include Ponderosa pine, Douglas fir, western larch, and cottonwood. Winter habitat is generally associated with areas of open water where fish and waterfowl congregate (Stalmaster, 1987). Bald eagles use perches during the day while hunting, feeding, or resting; roosts are used at night or for protection during bad weather and may be occupied by one to several hundred bald eagles; roost sites, like nest sites, are used year after year.

The bald eagle is an opportunistic predator and feeds primarily on fish, but also consumes a variety of birds and mammals (both dead and alive) when fish are scarce or these other species are readily available (USFWS 1997).

An active nest is present just upstream of the treatment site (approximately 2 km). Two adults have been seen in the area from the nesting site to below Boulder Creek. In addition, there are two alternate nesting sites downriver near Caboose Creek. One nest sits on the river's edge in a Ponderosa pine, while the other is located up on the rim at approximately 2000 ft elevation (Robinson, November 22, 2004).

Effects of the Proposed Action on Bald Eagles

Impacts to bald eagles would include temporary yet minor increases in noise and human disturbance associated with construction of treatment site and delivery of nutrients and personnel in the area. Nutrient holding tanks will only need to be replenished 2-4 times during the treatment period. The activity in the area is not likely to additionally displace bald eagles from the project area during the treatment process. Motorized vehicle use will be limited to project personnel. The treatment site is on private property and lies between the highway and canyon rim so traffic and human presence already exist. The only known nest is about 2 km upstream of the proposed location and it is unlikely that the planned roadwork would affect this nest. A survey of the surrounding area for any other nests will be done prior to any road improvements or any other activity that would create noise or other disturbance.

No impacts to bald eagles are anticipated as a result from consumption of fish and/or water near the treatment site and no loss of habitat or nesting sites is anticipated. Nitrate levels of treatment water fall within what is considered "safe" for consumption within 2 m of the pipe opening. The nutrient additions could benefit eagles by increasing fish abundance, biomass and the biological condition of the river.

Bald eagles lay eggs from February to April. Treatment would begin in late June after the breeding season. Fledglings should be nearly independent by this time. No nesting sites would be removed or tampered with. The nest site well upstream of the treatment location would not be adversely affected. The eagles may avoid the area on the canyon rim where the nutrient application station would be housed and the minor increase in traffic would occur. This site is far enough away from the river that foraging should not be impacted.

Grizzly Bears

On July 28, 1975, the grizzly bear was officially protected under the **Endangered Species Act** and was listed as threatened throughout its entire range in the lower 48 states (U.S. Department of the Interior, 1975). Between 1800 and 1975, grizzly bear populations in the lower 48 states decreased from more than 50,000 to fewer than 1,000 bears. The main causes for this decline are attributed to habitat loss (settling of the West), over-hunting and commercial trapping, livestock depredation controls, and fear-caused hunting by humans. Today, the main threat to grizzly bears is from habitat degradation due to development and other human disturbances (U.S. Department of the Interior, 1995).

Grizzly bears maintain large home ranges that vary depending on gender and food abundance. They are generalists when it comes to habitat. They occupy low-elevation **riparian** areas, snow chutes, and meadows in the spring and late fall, and move up to higher sub-alpine forests in the summer, early fall, and winter. Grizzlies usually den above 6,000 ft in natural or excavated caves after the first snowfall (U.S. Department of Agriculture, 2002).

There are no known credible sightings of grizzly bears within 5 km of the project area from 1960-2003, nor were there any reports of collared bears from 1980-2003. On May 20, 2004 a credible sighting was reported near Boulder Creek on the opposite side of the river from the treatment site (Kasworm, December 3, 2004; Wakkinen, December 3, 2004).

The project area lies near the Cabinet/Yaak Grizzly Bear Recovery Zone. The treatment site and tank location itself would not be in recovery zone, however the access road would be (Figure 8).

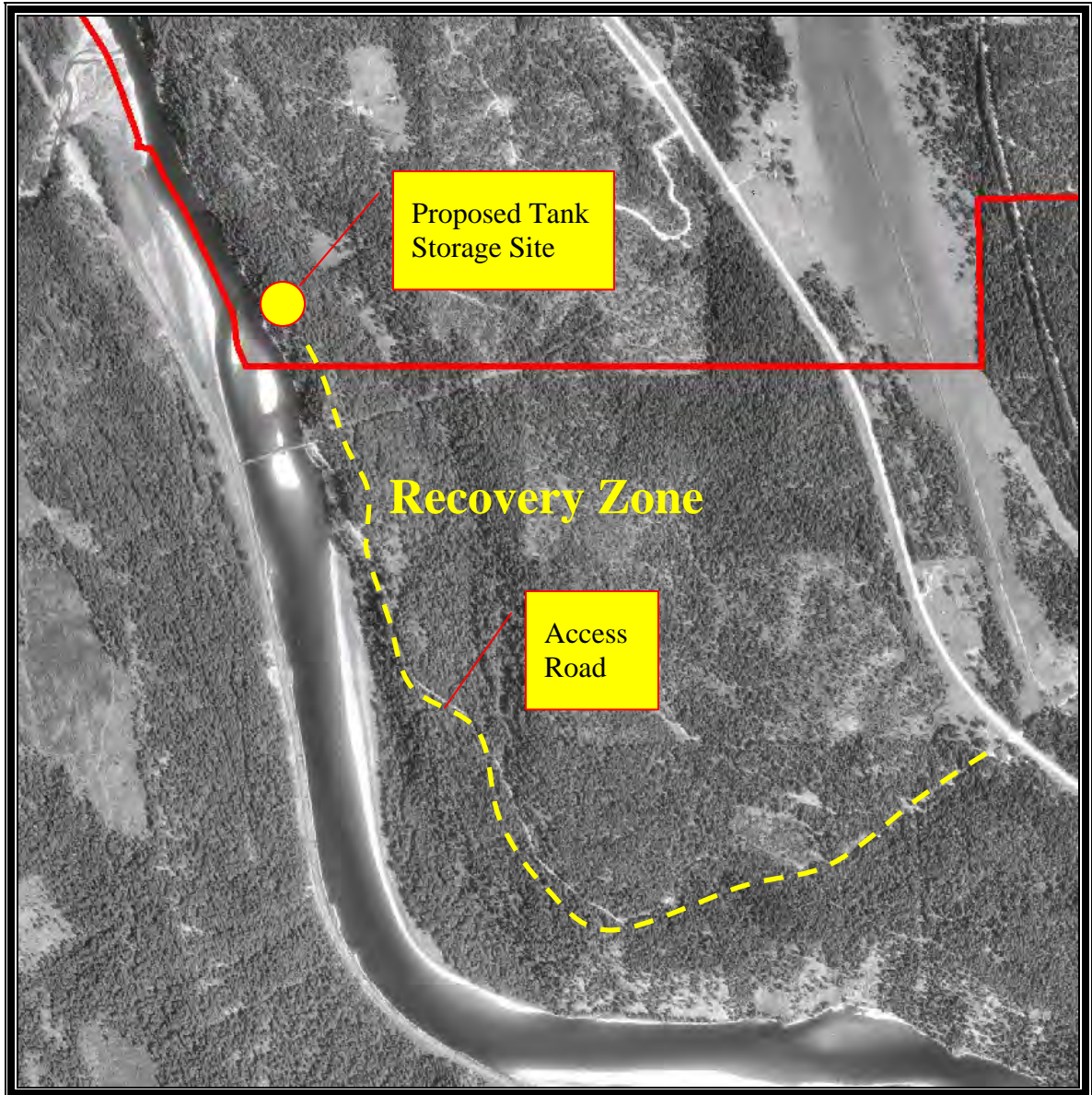


Figure 8 The Cabinet/Yaak Grizzly Bear Recovery Zone

Effects of the Proposed Action on Grizzly Bears

Impacts to grizzly bears would likely include temporary yet minor increases in noise and human disturbance associated with construction of treatment site and delivery of nutrients and personnel in the area. Nutrient holding tanks would only need to be replenished 2-4 times during the treatment period. Motorized vehicle use will be limited to project personnel only. The treatment site is on private property and lies between the highway and canyon rim so traffic and human presence already exist.

No loss of habitat for food, denning, or migration is anticipated. In addition, no impacts to grizzly bears are anticipated as a result of consumption of fish and/or water

near the treatment site. Nitrate levels of treatment water fall within what is considered safe for consumption within 2 m of the pipe opening on the river bottom.

Gray Wolf

Gray wolves were protected under the Endangered Species Act in 1978. Having been extirpated from the western United States by the 1930s, wolves were listed as endangered throughout the lower 48 United States, except Minnesota where they were listed as threatened (U.S. Department of the Interior, 1978). Gray wolves have also been listed as experimental populations in other areas, including parts of Idaho and Montana. This designation has not been changed.

Wolves can live in many types of habitats including forested areas, rangelands, agricultural areas, deserts, and tundra. They are territorial in most areas, defending territories that range from 48 to 350 square miles (Mech, 1970; Peterson, 1977; Laudon, 2005). Two factors identified as crucial for establishing good wolf habitat include a large prey base and minimal human disturbance.

The gray wolf is listed as an endangered species north of Interstate 90 in Idaho. Key components of gray wolf conservation include prey availability and reducing human-caused mortalities.

The treatment area lies within the boundaries of the Northwest Montana Wolf Recovery Area which includes northwestern Montana and the Idaho Panhandle. There are currently no known wolf packs within a 20-mile radius of the treatment site. The nearest known pack location is the Candy Mountain pack in the Yaak Valley, just over 20 miles to the north. While there could be loners in the immediate project area, no sightings have been reported (Bangs and Laudon, December 13, 2004). Sightings have been reported in Boulder Meadows, approximately 10 miles to the west of the treatment site and on the opposite side of the Kootenai River (Laudon, December 13, 2004).

Effects of the Proposed Action on Gray Wolf

Impacts to gray wolves would likely include temporary yet minor increases in noise and human disturbance associated with construction of the treatment site and delivery of nutrients and personnel in the area. Nutrient holding tanks will only need to be replenished 2-4 times during the treatment period. Motorized vehicle use will be limited to project personnel only. The treatment site is on private property and lies between the highway and canyon rim so traffic and human presence already exist.

No loss of habitat for food, denning, or migration is anticipated. In addition, no impacts to wolves are anticipated as a result from consumption of fish and/or water near the treatment site. Nitrate levels of treatment water fall within what is considered safe for consumption within 2 m of the pipe opening on the river bottom.

~~Figure 9 The Candy Mountain Wolf Pack Home Range (This figure has been removed)~~

Canada Lynx

Lynx were listed as threatened, effective April 24, 2000.

Lynx habitat has been identified in the vicinity of the project area, though not at the treatment site itself. A linkage zone exists in the vicinity project area (Figure 10).

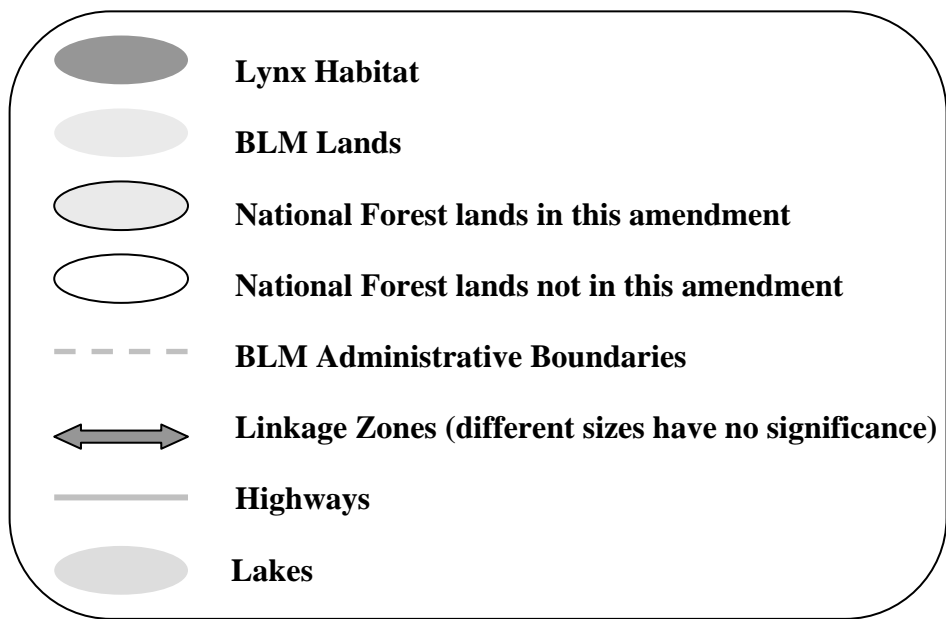
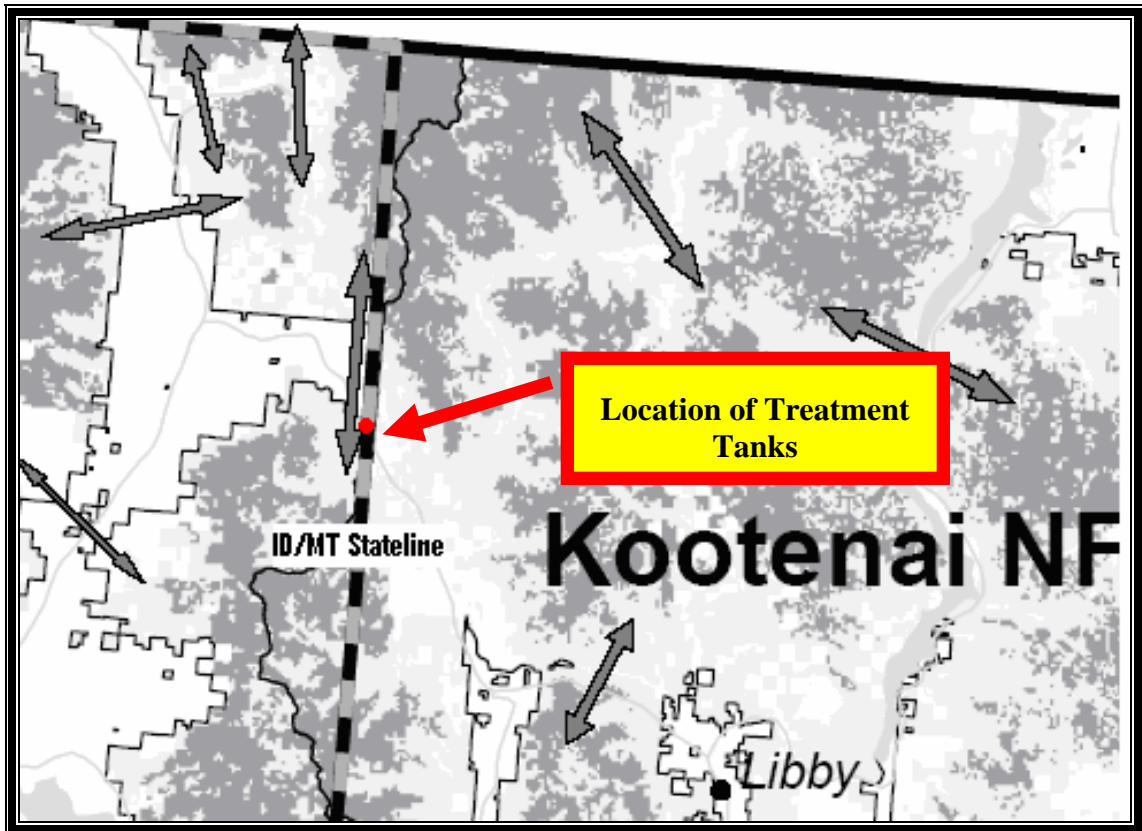


Figure 10 Canada Lynx Habitat and Linkage Zones

Effects of the Proposed Action on Canada Lynx

Impacts to Canada lynx would likely include temporary yet minor increases in noise and human disturbance associated with construction of the treatment site and delivery of nutrients and personnel in the area. Nutrient holding tanks will only need to be replenished 2-4 times during the treatment period. Motorized vehicle use will be limited to project personnel only. The treatment site is on private property and lies between the highway and canyon rim so traffic and human presence already exist.

No loss of habitat for food, denning, or migration is anticipated. In addition, no impacts to lynx are anticipated as a result from consumption of fish and/or water near the treatment site. Nitrate levels of treatment water fall within what is considered safe for consumption within 2 m of the pipe opening on the river bottom.

3.1.4 Species of Special Concern

Table 5 shows the Idaho species of concern in the vicinity of the project.

Table 5 Idaho Species of Concern

Species	Expected Occurrence
Burbot (<i>Iota Iota</i>)	Resident
Redband rainbow trout (<i>Oncorhynchus mykiss gairdneri</i>)	Migratory/Resident
Westslope cutthroat trout (<i>Oncorhynchus clarki lewisi</i>)	Resident

Source: Idaho Conservation Data Center, March 18, 2005.

Burbot

In Idaho, burbot are endemic to the Kootenai River and are a species of special concern. They are imperiled because of large-scale hydro and habitat changes in the Kootenai River and the ecosystem including nutrient losses. Because of these factors it is very vulnerable to extinction within its very limited location.

There is only one instance of a burbot near the state border with Montana but none as far upstream as the state border. While burbot prefer slower moving water with sandy to small gravel substrate and lake environments, the river at the treatment site has a high gradient and large gravel substrate. Most sampling for burbot (Paragamian et al. 2000) was concentrated below rkm 244.5 due to a higher concentration of burbot but in 1993; some sampling was done up to the Montana border.

Effects of the Proposed Action on Burbot

The proposed action will take place prior to any spawning migrations for burbot in the lower river.

The Kootenai River is low in zooplankton density and any improvements to the primary and secondary productivity of the river below Bonners Ferry are likely to benefit burbot early life history, recruitment, and survival. This type of response was recently recorded in trout and mountain whitefish populations in Big Silver Creek, B.C. (Wilson et al 1999b). It is not known if nutrient restoration well above Bonners Ferry will show indirect benefits to burbot or other fish species in the lower river, however, it is very unlikely that there would be any associated negative effects.

Redband Rainbow Trout (Columbia River Redband Trout *Oncorhynchus mykiss gairdneri*)

A non-anadromous form of the Columbia River redband trout is native to the Kootenai (spelled Kootenay in Canada) River drainage upstream to at least Kootenai Falls in Montana (Allendorf, et al. 1980; Behnke, 1992). Columbia River redband trout (redband trout) spawn in Kootenai River tributaries from April to June, and include adfluvial runs from Kootenay Lake, British Columbia, and fluvial fish from the Kootenai River (Downs 1999; IDFG unpublished data). The juveniles rear in the tributary streams for up to three years before outmigrating to the Kootenai River, but some will outmigrate during their first summer (Downs, 1999, 2000; Walters and Downs, 2001; Walters, 2002, 2003). Redband trout in the Kootenai River are mainly insectivores, dependent on both aquatic and terrestrial insects.

Effects of the Proposed Action on Redband Trout

Redband trout are one of the species targeted to benefit from this nutrient restoration project. Redband trout could benefit if aquatic insect production increases after nutrient additions. The increased food supply could result in higher survival of juvenile redband trout that rear in the mainstem Kootenai River. An increased food supply could also support faster growth rates leading to an earlier age at maturity, and improved condition (e.g., relative weight), resulting in higher fecundities.

Westslope Cutthroat Trout (*O. clarki lewisi*)

Westslope cutthroat trout occur throughout the Kootenai River drainage, but are most common in tributary streams that are separated from the river by upstream migration barriers. Because redband trout are native to the Kootenai River, westslope cutthroat trout were likely never common in the mainstem or in tributaries downstream of migration barriers. Columbia River redband trout evidently replaced interior cutthroat trout in most areas where they came into contact (Behnke, 1992). During September electrofishing in 2000 and 2001, catch per unit effort for westslope cutthroat trout was only 1.1 fish/hr. An estimated 235 westslope cutthroat trout were harvested from the Kootenai River in 2001, with a catch per unit effort of 0.03 fish/angler h (Walters, 2003).

Little is known about westslope cutthroat trout in the Kootenai River, Idaho. All three life history forms are possible in the Kootenai River drainage, though resident forms in tributary streams appear most common. One westslope cutthroat trout was radio-

tagged on May 2, 2002 in the mainstem Kootenai River. This fish was located in Boulder Creek, a Kootenai River tributary, on June 4, 2002, where it presumably spawned (Walters, 2004). Westslope cutthroat trout likely use similar habitat as the redband trout in the mainstem, and their food habits are likely similar as well.

Effects of the Proposed Action on Westslope Cutthroat Trout

Westslope cutthroat trout could benefit if aquatic insect production increases after nutrient additions. The increased food supply could result in higher survival of juvenile westslope cutthroat trout that rear in the mainstem Kootenai River. An increased food supply could also support faster growth rates leading to an earlier age at maturity, and improved condition (e.g., relative weight), resulting in higher fecundities.

3.1.5 Impacts of the No Action Alternative

No new impacts are expected. Current impacts to the Kootenai River ecosystem would continue or worsen. The biology of the Kootenai River system would likely not improve. The fishery would not improve without other projects or measures.

3.1.6 Cumulative Impacts

The equipment proposed is temporary and can be removed during the treatment season or later if treatment is discontinued. Treatment of the river could have positive cumulative effects if production increases up the food chain and more fish are available not only for humans but also for other animals (insects, birds, and other terrestrial wildlife such as black bears). Treatment would be monitored so as to limit negative effects and if negative effects are created, treatment would be suspended. The land used for the equipment could revert to its previous condition when all equipment is removed.

As listed in Section 1.4, there are many projects and programs being implemented or planned for implementation whose goals are to enhance portions of the Kootenai River Basin. Those efforts, working in concert with this project and any future projects, could improve the condition of the Kootenai River ecosystem, which in turn would improve production and survival of many fish and wildlife species. Recovery and increased production in the ecosystem could result in more opportunities for fishing and hunting.

3.2 Land Use

3.2.1 Affected Environment

The proposed location for the treatment tanks is on private timber land. The private land is in young second growth timber, with scattered old growth. Lincoln County has no zoning in this area and there are no restrictions on land use on the private property (French, March 10, 2005).

The above ground, HMW pipes from the tanks would cross National Forest System Land that borders the private land. This area is in the Kootenai National Forest Plan as Management Area 13 (MA-13). This management area includes scattered parcels of

timber stands. The area proposed to be crossed by the treatment pipe is in second growth timber. The goal of this management area is “to provide special habitat necessary for old-growth dependent wildlife (usually other than big game) on a minimum of 10% of each major drainage on the Forest, and in units that represent the major habitat types and tree species of each drainage.” Special uses are authorized on a case-by-case basis (USFS, 1987).

3.2.2 Potential Impacts of the Proposed Action

The treatment equipment proposed would be temporary. Some of the equipment would be removed after the end of the treatment season; others such as the tanks would be left on the site for the next treatment season. The land use would not be permanently changed except where trees are cut to make room for a gravel pad for the tanks and trailer. If treatment is suspended, the land could be recovered and planted with trees.

3.2.3 Potential Impacts of the No Action Alternative

No land use impacts are expected to occur.

3.2.4 Cumulative Impacts

All equipment proposed for the treatment site is temporary. Some would be removed after each treatment season; others are temporary facilities that could be removed at the end of the project. The land could revert to its former condition.

3.3 Visual Resources

3.3.1 Affected Environment

Visual quality objectives for this management area (MA-13) vary depending on the visual significance of the area. Because the area is next to the Kootenai River, and may be seen from the river, riverbanks and other vantage points, the visual quality objective (VQO) for the area where the pipes would cross has high visual quality and so should be managed to retain the visual quality.

The area is situated between mountains and attracts tourists and residents because of its scenic visual resources. From the valley floor the area provides vistas of snow-capped mountains. The nearby area is rural, with farmland and scattered houses on the valley floor and along the river, and forestland and rural residential sites in the foothills. The non-operational Leonia Bridge crosses the river just south of the treatment site. Along the west side of the river railroad tracks add an industrial element to the area. Trees, other vegetation, or topography screen most views of the treatment location.

The view of the treatment location and surrounding area from nearby hills and mountains is from a long distance and higher elevation.

3.3.2 Potential Impacts of the Proposed Action

Originally the tanks were proposed to be about 3.3 m high. After concerns expressed about whether the tanks could be seen from the river, the tanks were redesigned to be shorter (about 1.8 m) to minimize visibility from the river or from the steep slope. They

should not be visible from the river. The proposed tank site is not visible from Highway 2 or any existing homes. Tanks would be visible from the private property surrounding the site. The tanks would be covered or colored in a way to blend with the local vegetation. A chain-link fence with neutral-colored blinds would be placed around the tanks to reduce any attraction to the site from people recreating in or along the river.

The pipe, small wooden platform and PV panels down the slope may be visible from the river, but would likely be screened by trees or brush. The pipe would be semi-transparent and would blend into the native rock and vegetation on the riverbank. The treatment equipment proposed would be temporary. Some of the equipment such as the pipe in the river would be removed after the end of the treatment season; the tanks and the pipe on the steep slope would remain for the next treatment season.

The wooden control valve platform down the hillside toward the water would also have a fence around the equipment and would be mitigated and blended in by trees and smaller vegetation. The PV panels may be visible intermittently by visitors to the river. These panels must be on the slope facing the river for maximum sunlight to power the instruments. The visual resource of the area would not be permanently changed except where trees are cut to make room for a gravel pad for the tanks (on DLC Inc. property). If treatment is suspended, equipment would be removed and the land could be recovered and planted with trees.

3.3.3 Potential Impacts of the No Action Alternative

No visual impacts are expected to occur.

3.3.4 Cumulative Impacts

The area is regarded for its scenic qualities. All equipment proposed for the treatment site is temporary. Some would be removed after each treatment season; others are temporary facilities that could be removed at the end of the project. The land could revert to its former condition.

3.4 Recreation

3.4.1 Affected Environment

Northern Idaho and western Montana have many natural and manmade resources that provide residents and visitors with a choice of recreation opportunities. The landscape is varied and scenic. Rugged mountains, rivers and lakes draw visitors to this area. Activities include skiing, hunting, fishing, boating, hiking, golfing, and other outdoor sports. Deer, elk, bear and various birds and small animals are common in the area. The public land near the proposed treatment site is not fenced and may be used for informal, dispersed recreation including hunting, wildlife viewing, birdwatching, and walking. Boaters use the river for floating and fishing. No recreation facilities exist on the property.

3.4.2 Potential Impacts of the Proposed Action

The area of the river to be treated is used by boaters, hikers, birdwatchers, fishers and other recreationists. The pipe used for treatment would be submerged and would not provide a hazard to boaters.

If the treatment is successful and fish populations increase, there would be a benefit to fishers because there would be the opportunity for harvest. Hikers, birdwatchers and others could also benefit if birds and other predators increase.

3.4.3 Potential Impacts of the No Action Alternative

No impacts to recreation are expected.

3.4.4 Cumulative Impacts

There are varied and abundant recreation resources in the area and no formal recreation on the existing property. If the project is successful, additional recreation opportunities such as increased fishing could be available.

3.5 Water Resources

3.5.1 Affected Environment

No historical data (prior to 1950s) are available for baseline or “natural” ambient nutrient concentrations (P or N) in the Kootenai River. A phosphate fertilizer plant (Cominco, Ltd.) located on the Saint Mary River, a major tributary to the upper Kootenai River, (BC) was in operation from 1953 to 1987. The plant discharged more than 8,000 metric tons of phosphate annually into the river in the 1960s (Knudson 1993). This greatly increased measures of ambient total phosphorus (TP). By the time the plant was closed, Libby Dam had been on-line for over a decade, which reversed the problem from a nutrient surplus to nutrient deficiency, especially in the Idaho reaches of the Kootenai River (Hardy and Holderman, 2004).

The City of Bonners Ferry has an intake for its municipal water near rkm 247. The Kootenai River is a secondary source of drinking water for the City of Bonners Ferry, the primary source being Myrtle Creek. Other private properties draw water from the river for drinking or irrigation purposes.

3.5.2 Potential Impacts of the Proposed Action

The effective distance of the treatment would be from about the Montana border (rkm 276) downstream to Bonners Ferry (rkm 248; Ashley, July 21, 2004). Although the effective treatment distance is believed to end at about Bonners Ferry, effects downstream of that point may occur over time, especially in the upper meander reach, just downstream of Bonners Ferry. Effects may be seen as far as Kootenay Lake, B.C.. Because of this, regular trophic-level based monitoring would occur downstream of Bonners Ferry to Kootenay Lake by KTOI and IDFG. Additionally, a rigorous biological monitoring program exists on Kootenay Lake (B.C. Ministry of Environment), which would detect any changes in water chemistry and fisheries that may occur from treatment of the Kootenai River.

Water samples would be obtained weekly at pre-determined locations to monitor the desired nutrient concentrations. Comparisons of background water quality samples would be performed to determine the change in nutrient concentrations. As stated in Section 2.1.6, annual monitoring of the fish community (e.g., relative species abundance and CPUE) would allow the IKERT steering committee to either continue or halt the nutrient restoration program based on “negative threshold” values. Therefore, once these species increase to levels that may affect salmonid production (or other sensitive species such as Kootenai River white sturgeon), or the biomass proportion of salmonid:non-game fish becomes unacceptable (i.e., maximum negative target), the project would be re-evaluated. By the very nature of ecosystem complexity, however, it is difficult to predict such outcomes. In the same likelihood of non-game fish species increasing, salmonid populations may increase to a level that creates a top-down control on these non-game fish communities. Careful evaluation of the trophic interactions within the 5-year experimental period should reveal if species shifts back to populations dominated by salmonids (Partridge 1983).

Management criteria of the nutrient additions have been set up to try and safeguard against any long-term deleterious effects of the treatments (see Section 2.1.6). In other words, should managers see nutrient additions resulting in potentially negative effects, the experiment would be discontinued and re-evaluated by the IKERT.

The City of Bonners Ferry has requested that total organic carbon (TOC), in addition to the six water quality parameters sampled at other sites, be measured weekly at the city water intake. Temperature (°C), conductivity (**mS·cm**), salinity (**ppt**), total dissolved solids, dissolved oxygen (mg·L and % saturation), standard pH, barometric pressure (**mm·Hg**), nitrate (**mg·L N**), and ammonia (mg·L N), and blue-green algae (**V or cells·mL**) would be measured at the city water intake, and reported to the appropriate agencies (Hoyle, 2005). Treatment dilutions are well within safe water consumption standards (human) within 2m of the pipe (human standards are more conservative than for aquatic organisms). During angler surveys performed during the treatment seasons, informational pamphlets about the project would be handed out. These pamphlets would also be available at boat launches and other areas used by recreationists and the general public. Signs would be placed near the outlet pipe to provide information and alert river users of elevated nitrate concentrations at the pipe nozzle prior to mixing (1-2 m; see Section 2.1.1 for more information on mixing zone concentrations).

Total Organic Carbon (TOC)

The City of Bonners Ferry is currently near the maximum level of TOC that they can safely chlorinate (2-2.5 **mg/L**). There should not be a measurable increase in TOC given the small amount of nutrients that would be added (Ashley, February 3, 2005). At most, the river would experience a slight increase in particulate organic carbon as some of the periphyton, such as algae, is scoured downstream in a flood event (for example) or in the fall when the periphyton dies off. If the nutrients are added in the proper ratios (approximately 20:1 for N:P), the river should experience little periphyton on the rocks, as it would be grazed and transferred into the invertebrate community (Ashley, February 3, 2005).

Northern rivers (e.g., the Mesilinka in northern B.C., treated for 4 years with nitrogen [15 µg/L] and phosphorus [5µg/L]) experienced a lag of 1 year for the invertebrates to increase in density and biomass following the first treatment dates (Larkin, et al. 1997). Considering this, and the need for TOC increases to be minimal, managers on the Kootenai River are proposing to add the lower P load for 2005 (1.5 µg/L), which would likely be increased to 3.0 µg/L in 2006. This should allow the invertebrate community enough time to increase and to take advantage of the additional periphyton accrual.

Chlorophyll (CHL)

Department of Environmental Quality (DEQ) guidelines indicate that “surface waters of the state shall be free from floating, suspended, or submerged matter of any kind in concentrations causing nuisance or objectionable conditions or that may impair designated beneficial uses...” (IDAPA 58.01.02-Water Quality Standards and Wastewater Treatment Requirements). Adding to this, Title 10-06 of DEQ surface water quality criteria states that “surface waters of the state shall be free from excess nutrients that can cause visible slime growths or other nuisance aquatic growths impairing designated beneficial uses” (IDAPA 58.01.02-Water Quality Standards and Wastewater Treatment Requirements). British Columbia (BC) has similar standards for surface water quality. For example, maximum chlorophyll *a* (CHL) concentration for aesthetic concerns are set at 50 mg/m², and the maximum without deleterious effects on stream life is set at 100 mg/m² CHL (Ashley and Stockner, 2003). In the upper Kootenai River (above Bonners Ferry) chlorophyll *a* concentrations in 1994 ranged from 46 mg/m² in July to 27 mg/m² in August (Snyder and Minshall, 1996). The same study showed that levels in 1995 were similar at 24 mg/m² in June and 39 mg/m² in July. Holderman and Hardy (2004), however, reported lower chlorophyll *a* concentrations (1-5 mg/m²) upstream of Bonners Ferry during the summers of 2001 and 2002. Although there are no specific CHL *a* criteria defined by Idaho DEQ for the Kootenai River, the objective is to stay within guidelines deemed acceptable in neighboring Canada. Objectives for CHL are to maintain Chlorophyll *a* concentrations below a maximum standard of 50-100 mg/m². Nutrient application to the Kootenai River would carefully follow water quality standards laid out by the Idaho DEQ and Environmental Protection Agency (EPA).

Metals

The objective is to maintain heavy metals additions at or below 1% of current background levels in the upper Kootenai River.

Since the phosphorus in the 10-34-0 nutrient solution is originally obtained through the mining of phosphate deposits around the earth, each ore body has its own unique amounts of heavy metals (Ashley and Stockner, 2003). Special attention would be paid to the origin of the phosphate in order to reduce heavy metal concentrations at the nutrient application site (only two major locations of mining of phosphorous exist in North America: Idaho and Florida). As a general rule, new metal additions should be maintained at or near 1% of current ambient metal concentrations to avoid harming aquatic organisms (Ashley, July 22, 2004).

Two 250 ml samples of the 10-34-0, the proposed form of nutrient additions, were sent to ALS Environmental (BC) for a full metals analysis in July 2004. Calculations performed by IDFG and KTOI in 2004 showed that following river mixing, the relative additions of metals to the river from the 10-34-0 are miniscule ($< 0.1 \mu\text{g/L}$; including such potentially harmful metals as arsenic, selenium, and mercury). Fish samples collected near the proposed treatment site were additionally sampled and analyzed in 2003 for background metals concentration. None of the fish tested (eight mountain whitefish and six large-scale suckers) were considerably high in metals concentrations (the analysis included such potentially harmful metals such as arsenic, selenium and mercury). The amount of metals that is to be added to the river is so small ($< 0.1 \mu\text{g/L}$) bioaccumulation of these metals in fish tissue would not likely be a factor (Ashley, July 22, 2004). Samples would be taken from approximately 25 fish annually to determine if the project is within the set guidelines. Substrate and water column samples would be taken weekly during the treatment application period.

There is likely only a minor, if any, hydrologic connection between the river water and some private wells in the Kootenai River Valley. Little or no impacts to local wells are expected because the treated river water should be filtered while traveling through the aquifer, and the river's organisms would use up the nutrients far in advance of the water being added to the local groundwater (Ashley, July 21, 2004). However, at the request of residents, some local wells would be sampled to see if any changes are detected after nutrients are added.

3.5.3 Potential Impacts of the No Action Alternative

No new impacts to water resources would occur. Current impacts to the Kootenai River ecosystem would continue. The quality of the Kootenai River would remain as it is today, with reduced levels of nutrients.

3.5.4 Cumulative Impacts

If treatment is successful in meeting the goals of the project and does not create negative impacts, the cumulative impacts would be beneficial to the ecosystem's animal communities and also to the human communities of tribes, fishers, and recreationists. If the treatment does not meet the goals, it would be suspended and there would be no cumulative impacts. The water quality of the river would be monitored to ensure that it is not degraded from the treatment and that it meets the requirements for municipal water withdrawals.

3.6 Wetlands

3.6.1 Affected Environment

Wetlands are areas of transition between aquatic and terrestrial systems, where water is the dominant factor determining the development of soil characteristics and associated biological communities. They are important communities that have declined over the years due to an increase in agriculture practices and urban development. Because of these losses, federal, state, and local laws protect wetlands. Jurisdictional wetlands, or wetlands that are regulated, are defined as "areas that are inundated or saturated by

surface or groundwater at a frequency and duration sufficient to support, and that under normal circumstances do support, a prevalence of vegetation typically adapted for life in saturated soil conditions" (U.S. Army Corp of Engineers, 1987). Wetlands in the project area were identified using USFWS National Wetland Inventory Maps and aerial photos.

There is one riverine wetland along the eastern riverbank where the pipe would run into the river. This wetland is bounded by the riverbank. Riverine wetlands are those that occur within the river channel and are dominated by emergent vegetation that remains only through the growing season (American Wetlands Campaign, 2005).

3.6.2 Potential Impacts of the Proposed Action

No construction would occur in the wetland. The wetland mapped is along the river. The only action that would take place would be laying the pipe along the riverbank to the river. No soil or plants would be disturbed. No impacts are expected.

3.6.3 Potential Impacts of the No Action Alternative

No impacts to wetland resources would occur.

3.6.4 Cumulative Impacts

No cumulative impacts would occur.

3.7 Floodplains

3.7.1 Affected Environment and Potential Impacts

The floodplain of the river ends at the edge of the riverbank where the topography quickly gains elevation. The tank site is on a bench high above the river and is outside the floodplain of the river.

The pipe that crosses the riverbank then descends into the river would be in the floodplain for about 12 weeks. The schedule for treatment is during typical low flow times of the year (June-September) and the pipe would be removed from the river and riverbank at the end of the treatment. The pipe would be on the top of the ground, and the ground would not be disturbed.

No impacts to floodplains are expected.

Because the proposed treatment requires nutrients to be mixed into the river, there is no alternative to putting the equipment temporarily across the floodplain.

3.7.2 Potential Impacts of the No Action Alternative

No impacts to floodplain resources would occur.

3.7.3 Cumulative Impacts

No cumulative impacts would occur.

3.8 Cultural Resources

3.8.1 Affected Environment

This stretch of the Kootenai River is the traditional territory of the Bonners Ferry band of the Lower Kootenai, now the Kootenai Tribe of Idaho. It likely saw frequent use by other nearby Native American groups including other Kootenai bands and the Kalispell (Ives, 2005).

In September 1809, a North West Company exploratory party, led by David Thompson, descended the Kootenai River to present-day Bonners Ferry. However, Euro-American contact had been made earlier by a small number of explorers, missionaries and traders. Indirect influences such as trade goods, horses and diseases had already had a great impact on the traditional cultures of Native American groups within the region (Ives, 2005).

Interactions with Euro-Americans increased with the arrival of gold mining prospectors into the area in the 1890s. Wagon roads from Troy, Bonners Ferry and Leonia were constructed in the late 1890s in an attempt to control traffic to and from the mining claims. The town of Leonia, located just west of the project **Area of Potential Effects (APE)** on the Idaho side of the Kootenai River was a station supplying needs of local homesteaders and miners. Ferry service and later the Leonia Bridge, constructed in 1922, provided a way to connect travel across the river.

3.8.2 Potential Impacts of the Proposed Action

No cultural resources were identified during the field survey of the Area of Potential Effects conducted in March 2005. However, according to Montana State Historic Preservation Office site files, portions of the historic Moyie-Sylvanite and Leonia-Sylvanite wagon roads are located within the project APE. A portion of the historic Moyie-Sylvanite wagon road would be used to access the proposed storage tank location, and the outlet from the storage tanks would cross the path of the Leonia-Sylvanite wagon road (Ives 2005).

Project plans call for the portion of the Moyie-Sylvanite road to be improved for use as an access road by adding fill material. The road within the project area is on private land and has been impacted as a result of logging activities. Further modification in the form of adding fill material would not adversely affect this culture resource.

The portion of the Leonia-Sylvanite wagon road within the APE was constructed in 1896 and abandoned the following year. No evidence of this cultural resource was observed during the field survey.

BPA has consulted with the Montana State Historic Preservation Office. The Montana State Historic Preservation Office has concurred with BPA's determination that the project would have no adverse effect on historic properties.

In the unlikely event that archaeological material is encountered during the implementation of this project, an archaeologist would immediately be notified and work halted in the vicinity of the finds until the material can be inspected and assessed. The

Montana State Historic Preservation Office and the appropriate Tribes will be notified of any future findings.

3.8.3 Potential Impacts of the No Action Alternative

No impacts to cultural resources would occur.

3.8.4 Cumulative Impacts

The historic wagon roads in the area have been impacted in the past by logging and other human activities. The proposed project would use a portion of the Moyie-Sylvanite road for access to the treatment site and this road would be improved by adding fill material. Though no evidence of the Leonia-Sylvanite wagon road was found during a survey, it would be crossed by the treatment pipe.

3.9 Vegetation

3.9.1 Affected Environment

The proposed location for the treatment tanks is on private timber land. The private land is in young second growth timber, with scattered old growth.

The pipes from the tanks would cross National Forest System Land in the Kootenai National Forest. Most of the Kootenai National Forest is tree-covered. Trees native to the area include western red cedar, western hemlock, western white pine, lodgepole pine, ponderosa pine, Douglas-fir, subalpine fir, grand fir, whitebark pine, alpine larch, western larch, mountain hemlock, Engelmann spruce, and juniper. Of the over 2.2 million acres on the Kootenai National Forest, about 1.8 million acres are considered capable of producing commercial timber. Habitat types are primarily in the Douglas fir, hemlock, and alpine fir series with clintonia and snowberry union as the dominant understory. Ponderosa pine/bitterbrush is found in scattered areas. There are also small areas of ponderosa pine habitat type in the Tobacco Plains, the West Kootenai Bench, and on the dry south slopes in the drier sites and exposures. The Three Rivers and Yaak Ranger Districts commonly support cedar/clintonia and hemlock/clintonia habitat types. Hemlock/devil's club and cedar/lady fern are found in moist high water table bottoms on those Districts, and in the foothills of the Cabinet Mountains Wilderness. Alpine fir/beargrass and whortleberry on the drier high elevation sites (USFS 1987).

The proposed treatment site is on a bench above the Kootenai River in second growth timber on private land next to Kootenai National Forest Plan Management Area 13. The above ground, HWM pipe to the river from the tanks would be in MA-13. This parcel is mostly second growth timber, with scatterings of old growth timber. This management area is designated Old-Growth Timber and the goal of this management area is to provide the special habitat necessary for old-growth dependent wildlife. Existing timber on the affected National Forest System Land is comprised primarily of ponderosa pine and Douglas fir. The ground cover and lower understory is almost exclusively clintonia, snowberry, and ocean-spray. No trees would be removed on National Forest System Land.

Noxious Weeds

Spotted Knapweed, Orange hawkweed, rush skeleton weed, and toadflax are the noxious weed species of concern in western Lincoln County, Montana (Williams, February 28, 2005). A visual inspection for these species would be conducted prior to construction on the site and treatment of these species, if found, would occur at that time. After construction is finished at the tank site and the access road, monitoring and treatment of the above species needs to be performed. The County recommends inspecting the county road that accesses the site and treating and monitoring it if noxious weeds were present. The County recommends Tordon 22K as the best herbicide to treat the four species listed.

Threatened and Endangered Species

Ute Ladies' Tresses

Ute Ladies' Tresses is a perennial orchid with a flowering stem, 20-50 cm tall. The flowers are ivory-colored and arranged in a spike at the top of the stem. The plants generally bloom from late July through August. Plants occur largely along streams and rivers and their floodplains, wet meadows, and open seepy areas, between elevations of 1300-1600 m. Two other species of *Spiranthes* are known to occur in Idaho.

There exists no documentation of Ute Ladies Tresses in Boundary County, Idaho or Lincoln County, Montana (Arvidson, December 18, 2004; Mincemoyer, December 5, 2004). The only known plants in Idaho occur in Jefferson, Madison, Fremont and Bonneville counties in southeast Idaho, largely along the Snake River floodplain (Mosely, 2002). In Montana, plants exist mostly in the eastern part of the state, especially along the Yellowstone River. In addition, no suitable habitat is present at the treatment site.

3.9.2 Potential Impacts of the Proposed Action

The potential impacts to vegetation would be from clearing of trees and low-growing vegetation for the tanks and other equipment and improved access. The amount of vegetation disturbed would be minor. There is a risk of spreading noxious weeds to these areas. A survey of noxious weeds would be done as suggested by the County. There would be no effects on Ute Ladies' Tresses because none occur in the area. If treatment is suspended, the land could be restored and planted with trees.

3.9.3 Potential Impacts of the No Action Alternative

No impacts to vegetation are expected.

3.9.4 Cumulative Impacts

Long-term effects to the area would be minor. Few trees and other vegetation would be removed. The equipment is temporary, and the area used for a gravel pad could be restored and replanted if treatment is suspended.

3.10 Soils

3.10.1 Affected Environment

Soils in the area, for the most part, have been influenced by glaciation and typically have a low inherent fertility when compared, for example, to soils on the west coast. The land type of the proposed treatment site from the Soil Survey of the Kootenai National Forest Area, Montana and Idaho (1995), is described as containing very steep slopes with lots of rock outcrop. This is the soil type for the area on National Forest System Land where the pipes would be. Because of the steepness of the slope, there is a potential for soil erosion. The soil on the bench where the tanks and access road would be located is a mixture of glacial till, residual soil, and stream deposits, which is underlain by bedrock. The area where the tanks would be is stable (Kuennen, March 12, 2005.)

3.10.2 Potential Impacts of the Proposed Action

The Proposed Action could create impacts from construction and use of the land. Site development would require an improved road to the tank site, a disturbed area for where the tanks and camp trailer would be located, and a turn-around area for the nutrient trucks to exit following the tank refill. The site would require some tree and shrub clearing, soil excavation, and other construction surface and subsurface disturbance. Potential impacts include soil erosion and dust. Erosion control measures would reduce potential impacts. Upper pad erosion control measures would include concrete lock blocks to contain all fill placed for the tank pad. Any additional potential erosion would be mitigated for and reduced by the use of staked straw bails in potential problem areas. Erosion from traffic to the lower valve platform (about 10 m south of the tank site) would be minimal and would be reduced with the aid of staircase and a knotted rope to stabilize persons during trips to collect flow data from the platform and to check the condition of the pipe.

3.10.3 Potential Impacts of the No Action Alternative

No impacts are expected.

3.10.4 Cumulative Impacts

Potential development could create erosion on hill slopes, but adequate erosion control measures would prevent loss of topsoil. If treatment is suspended, the land could be restored and planted with trees.

3.11 Noise, Public Health and Safety

3.11.1 Affected Environment

The treatment site is on private property and lies between the highway and canyon rim where traffic and human presence already exist. Ambient noise levels include noise from truck traffic on the highway during many hours of the day. A railroad line runs along the opposite of the river from the treatment site, and train noise is frequent. See Section 3.1 for impacts to wildlife.

Though the access road to the treatment site is gated and crosses private property, some informal visitors do use the area. The area along the river is accessible by boat and by foot. The Forest Service is concerned about potential vandalism on the site (see Section 3.11.2).

3.11.2 Potential Impacts of the Proposed Action

The Proposed Action would create minor increases in noise and human disturbance associated with construction of the treatment site and delivery of nutrients and personnel in the area. Nutrient holding tanks would need to be replenished 2-4 times during the treatment period. Motorized vehicle use would be limited to project-authorized personnel only.

The tanks would be surrounded by a berm (concrete lock-blocks or sandbags) with a felt matt and thick plastic membrane to contain any leaks from the tanks. This would prevent the nutrients from being released and affecting any other ground. No major leaks should occur because an automated switch would shut off flow should nutrients stream faster than programmed (indicating a break in the line) and an alarm system would alert the technician on site. Should any minor leaks in the line reduce vegetation in the immediate vicinity (the opposite should occur), the forest botanist would be consulted for re-vegetation recommendations. Following the treatment season, the tanks would be emptied and the pipe in the river removed until the following season.

Treatment dilutions are well within safe water consumption standards (human) within 2m of the pipe (human standards are more conservative than for aquatic organisms). Because tanks are located on the rim away from the river's edge, and an emergency alarm and shut-off valves would be in place, no spills directly into the Kootenai River are anticipated.

A fence would surround the tank area and the gate on the fence would be locked when the tanks are not in use to keep anyone from tampering with the injection system. A technician would be onsite during the treatment season and would provide security against vandalism.

The end of the pipe in the river would be submerged so that boaters could safely pass the pipe. During angler surveys performed during the treatment seasons, informational pamphlets about the project would be handed out. These pamphlets would also be available at boat launches and other areas used by recreationists and the general public. Signs would be placed near the outlet pipe to provide information and alert river users of elevated nitrate concentrations at the pipe nozzle prior to mixing (1-2 m; see Section 2.1.1 for more information on mixing zone concentrations).

As stated in other sections of the document, mitigation to reduce potential harm and/or an attraction for vandalism are included in the proposed action:

- Using a color for the tanks so that they blend into the surrounding environment;
- Onsite personnel to provide security and monitor the system and the nutrient application and equipment;
- An alarm system and automatic shutoff to prevent leaks;

- A concrete or sand berm around the tanks and a felt matt and plastic liner underneath the tanks to capture any potential leaks;
- A locked gate on the access road to the site;
- Posting and handing out informational pamphlets in the area.

3.11.3 Potential Impacts of the No Action Alternative

No impacts are expected.

3.11.4 Cumulative Impacts

No cumulative impacts are expected. The equipment is temporary. Some would be removed at the end of each treatment season. If a leak or vandalism occurs, the containment of the nutrients would prevent any lasting impact to the surrounding area.

4.0 Consultation, Permit and Review Requirements

4.1 National Environmental Policy Act

This EA is being prepared pursuant to the National Environmental Policy Act (NEPA) (42 U.S.C. 4321 *et. seq.*) and the Council of Environmental Quality (CEQ) Implementing Regulations, which require federal agencies to assess the impacts that their proposed actions may have on the environment. Based on information in the EA, BPA would determine whether the proposal significantly affects the quality of the human environment. If it does, an Environmental Impact Statement is required. If it is determined that the proposal would not have significant impacts, a Finding of No Significant Impact (FONSI) would be prepared.

4.2 Threatened and Endangered Species and Critical Habitat

The Endangered Species Act (ESA) of 1973 (16 U.S.C. 1536) as amended in 1988, establishes a national program for the conservation of threatened and endangered (T&E) species of fish, wildlife, and plants and the preservation of the ecosystems on which they depend.

The ESA is administered by the U.S. Fish and Wildlife Service and, for salmon and other marine species, by the National Oceanic and Atmospheric Administration, National Marine Fisheries Service. Section (7a) requires federal agencies to ensure that the actions they authorize, fund, and carry out do not jeopardize endangered or threatened species or their critical habitats.

See Sections 3.9, Vegetation and 3.1, Fish and Wildlife for a discussion of the federally-listed species and the potential impacts to these species. BPA has consulted with the USFWS. The USFWS concurred with BPA's determination that the proposed project is "not likely to adversely affect" the listed species in the area (USFWS, May 16, 2005). No salmon or other marine species would be affected, so the National Oceanic and Atmospheric Administration, National Marine Fisheries Service was not consulted.

4.3 Fish and Wildlife Conservation

The Fish and Wildlife Conservation Act of 1980 (16 USC 2901 *et seq.*) encourages federal agencies to conserve and promote conservation of non-game fish and wildlife species and their habitats. In addition, the Fish and Wildlife Coordination Act (16 USC 661 *et seq.*) requires federal agencies undertaking projects affecting water resources to consult with the U.S. Fish and Wildlife Service and the state agency responsible for fish and wildlife resources. The analysis in Section 3.1, Fish and Wildlife, indicates impacts to fish and wildlife the alternatives would have. Provisions of the Pacific Northwest Electric Power Planning and Conservation Act (16 U.S.C. *et seq.*) are intended to address system-wide fish and wildlife losses. This project is proposed to fulfill these obligations, as part of the Columbia River Basin Fish and Wildlife Program.

4.4 Discharge Permits under the Clean Water Act

The Clean Water Act regulates discharges into waters of the United States.

The Tribe and IDFG have obtained a short-term activity exemption (STAE) from the Idaho Department of Environmental Quality for the initial 12-week treatment period proposed- in lieu of a National Pollutant Discharge Elimination System (NPDES) permit and Section 401 of the Clean Water Act certification for the program. EPA would issue the NPDES permit and IDEQ the 401 certification for the next 4 years of treatment beginning in 2006 if the program is implemented. The Tribe and IDFG would comply with all EPA and IDEQ guidelines for discharges under the Clean Water Act.

The Army Corps of Engineers has indicated that no Section 404 permit is required because there will be no dredging or filling with the high-water mark.

The project proponents have obtained a 124 permit from the Montana Department of Fish, Wildlife and Parks.

The Idaho Department of Water Resources would issue a stream channel alteration permit for any type of work or activity in the river (including placement of 3-10 m feet of pipe).

4.5 Safe Drinking Water Act

The Safe Drinking Water Act (42 U.S.C. sec 300f et. seq.) is designed to protect the quality of public drinking water and its sources. The City of Bonners Ferry has an intake for its municipal water near rkm 247. The Kootenai River is a secondary source of drinking water for the City of Bonners Ferry, the primary source being Myrtle Creek. Water samples would be obtained weekly at pre-determined locations to monitor the desired nutrient concentrations. Comparisons of background water quality samples would be performed to determine the change in nutrient concentrations. The City of Bonners Ferry has requested that total organic carbon (TOC), in addition to the six water quality parameters sampled at other sites, be measured weekly at the city water intake. Temperature (°C), conductivity (mS/cm), salinity (ppt), total dissolved solids, dissolved oxygen (mg/L and % saturation), standard pH, barometric pressure (mm/Hg), nitrate (mg/L N), and ammonia (mg/L N), and blue-green algae (V or cells/mL) would be measured at the city water intake, and reported to the appropriate agencies (Hoyle, 2005). Treatment dilutions are well within safe water consumption standards (human) within 2m of the pipe (human standards are more conservative than for aquatic organisms). See Section 3.5.

4.6 Resource Conservation and Recovery Act

No hazardous materials would be used, discarded or produced by this project. Solid wastes would be disposed of at a landfill approved by the state of Idaho. If any leaks develop at the treatment site, the berm surrounding the treatment tanks would contain the liquid and it would be pumped to a non-leaking holding tank, then disposed of.

4.7 State, Areawide, and Local Plan and Program Consistency

Lincoln County, Montana does not have a comprehensive plan or zoning regulations for the treatment site. The treatment site is on unincorporated private rural timberland owned by DLC, Inc. (E1/2SW1/4SW1/4 of Section 17, Township 33 North, Range 34 West, Principle Meridian Montana as shown on Certificate of Survey No. 2800); and National Forest System Lands managed by the Kootenai National Forest (Government Lot #5 of Section 17, Township 33 North, Range 34 West, Principle Meridian Montana as shown on Certificate of Survey No. 2800). The use of the proposed equipment on the Kootenai National Forest would require a special use permit from the Forest Supervisor. The use is consistent with the current forest plan, no amendments to the forest plan are necessary. The Tribe and IDFG would work with the USFS while designing the facilities. A special use permit would be obtained.

The Idaho Department of Lands would issue a land easement to have the proposed pipeline enter Idaho state land within the high-water mark.

The Montana Department of Natural Resources has indicated that no land easement is required for work within the high-water mark in Montana.

4.8 Wetlands and Floodplains Protection

Discussion of wetland effects is provided in Section 3.6, Wetlands. Discussion of floodplain effects is provided in Section 3.7, Floodplains.

4.9 Recreation Resources

The proposed project would not affect Wild and Scenic Rivers, National Trails, Wilderness Areas, National Parks, or other specially designated recreational areas. Discussion of impacts to dispersed recreation is in Section 3.4.

4.10 Federal Insecticide, Fungicide and Rodenticide Act

Herbicides would not be used during project construction; however, herbicides may be used to prevent the spread of noxious weeds. The Tribe and IDFG would comply with all federal regulations regarding the use of herbicides, including application by trained applicators.

4.11 Heritage Conservation

Federal historic and cultural preservation acts include the National Historic Preservation Act (16 USC 470-470w-6), the Archeological Resources Protection Act (16 YSC 470aa-470ll), the Archeological and Historic Preservation Act (16 USE 469-469c), the American Antiquities Act (16 USC 431-433), and the American Indian Religious Freedom Act (42 USC 1996). BPA has consulted with the Montana State Historic Preservation Office. The Montana State Historic Preservation Office has concurred with BPA's determination that the project would have no adverse effect on historic properties. See Section 3.8 for information about cultural resources. No impacts are expected from the alternatives.

4.12 Noise Control Act

See Section 3.11.

4.13 Clean Air Act

Open burning outside of city limits is allowed from October 1-April 30. During the fire season (May 1 – September 30), burning permits are required in Lincoln County. If cleared slash or trees are burned by the landowner, a county permit would be obtained.

4.14 Review, Consultation and Permit Requirements not Applicable to this Project

4.14.1 Stormwater Permit

A stormwater permit is required if the proposed ground disturbance is greater than 1 acre. Less than 1 acre of disturbance is proposed, so no stormwater permit is required (Ryan, January 2004). The Montana Department of Environmental Quality has indicated that a 318 Permit for activities that may temporarily increase turbidity is not required for the project.

4.14.2 Toxic Substances Control Act

No toxic substances would be manufactured or used on this project.

4.14.3 Energy Conservation at Federal Facilities.

Energy conservation practices are not relevant to the facilities proposed.

4.14.4 Farmland Protection Policy Act

The project would not affect any prime, unique or other important farmland as defined in the Farmland Protection Policy Act (U.S.C. 4201 et seq.).

4.14.5 The Executive Order on Environmental Justice

The project would not adversely affect minority or disadvantaged groups. No adverse effects on any human groups or individuals are expected. This project would have a positive impact for minority/disadvantaged tribal populations.

5.0 List of Agencies, Organizations, and Persons Sent the EA

The project mailing list contains about 350 potentially interested or affected landowners; tribes; local, state and federal agencies; utilities; public officials; interest groups; businesses; special districts; libraries and the media. They have directly received or have been given instructions on how to receive all project information made available so far, and they will have an opportunity to review.

Federal Agencies

- US Army Corps of Engineers (Libby, MT)
- US Army Corps of Engineers (Seattle, WA)
- US Environmental Protection Agency (Idaho)
- USDA Forest Service (Kootenai National Forest)
- USDA Forest Service (Libby Ranger District)
- USDA Forest Service (Panhandle National Forest)
- USDA Forest Service (Three Rivers Ranger Station)
- USDA Forest Service (Bonners Ferry Ranger District)
- USDA Natural Resources Conservation Service
- USDOC NOAA National Marine Fisheries Service
- USDOE Bonneville Power Administration (Libby Station)
- USDOI Bureau of Land Management
- USDOI Fish & Wildlife Service (Spokane)
- USDOI Fish & Wildlife Service (Kootenai National Wildlife Refuge)
- USDOI Geological Survey

Tribes Or Tribal Groups

- Blackfeet Nation
- Confederated Salish and Kootenai Tribes
- Kootenai Tribe of Idaho

State And Local Agencies

- Idaho Department of Fish and Game
- Idaho Department of Environmental Quality
- Montana Department of Transportation

Montana Fish Wildlife and Parks

Boundary County, Idaho

Lincoln County, Montana

City of Bonners Ferry

City of Troy

Canada

British Columbia Ministry of Environment, Land, and Parks (BCMELP)

East Kootenay Environmental Society

Public Officials

Federal

US Congressman, C L (Butch) Otter, Idaho

US Senator Larry Craig, Idaho

US Senator Mike Crapo, Idaho

US Congressman Denny Rehberg, Montana

US Senator Max Baucus, Montana

US Senator Conrad Burns, Montana

State

Representative Eric Anderson, Priest Lake, Idaho

Senator Shawn Keough, Sandpoint, Idaho

Representative Rick Maedje, Fortine, Montana

Representative Ralph Heinert, Libby, Montana

Senator Aubyn Curtiss Fortine, Montana

Special Districts

Boundary Soil Conservation District

South Baldy Water District

Libraries

County of Boundary Public Library

East Bonner County Library District

Lincoln County Free Library

Troy Branch Library

Universities

University of British Columbia
University of Eastern Washington
University of Idaho

Interest Groups

Historical Research Associates
Idaho Conservation League
Kootenai River Network
Kootenai Valley Trout Club
Montana River Action
Montana State Parks Foundation
Montana Trout Unlimited
Montana Wilderness Association
Montana Wildlife Federation
National Wildlife Federation
Rock Creek Alliance
Sierra Club (In-Land Northwest Office)
Trout Unlimited (Sandpoint and Hope)
Yaak Valley Forest Council

Media

Bonnors Ferry Herald
Boundary News, Rural Northwest
Coeur d' Alene Press
Kootenai Valley Press
KLCB AM

6.0 Glossary

Area of Potential Effects (APE): the geographic area or areas within which an undertaking may directly or indirectly cause changes in the character or use of historic properties, if such properties exist. The area of potential effects is influenced by the scale and nature of the undertaking and may be different for different kinds of effects caused by the undertaking.

Autotrophic: plants capable of making their own food by synthesis of inorganic materials.

Autotrophic reach: a river reach in which photosynthesis exceeds respiration, i.e., a river reach where sunlight energy is fixed and food resources are manufactured.

C: Degrees Celsius.

CHL *a*: Chlorophyll *a*.

Endangered: Under the Endangered Species Act, those species officially designated by the National Marine Fisheries Service or U.S. Fish and Wildlife Service as in danger of extinction through all or a significant portion of their range. Endangered species are protected by law. See also *Threatened*.

Endangered Species Act (ESA): The Endangered Species Act of 1973, as amended, requires that Federal agencies ensure that their actions do not jeopardize Threatened or Endangered species.

Fluvial: is generally used to describe a type of spawning strategy of a fish. For example, a fluvial fish will reside in the mainstem of a river and migrate to upper tributaries to complete their spawning. Adfluvial fish reside in a lake and travel up adjacent tributaries to spawn. A fish that is considered "resident" spend their entire lives in headwater streams.

Mg/L: milligrams per liter. Parts per million.

Mg/L N: milligrams per liter nitrogen.

Mg/m²: Milligrams per meter square.

mm Hg: Millimeters mercury.

mS-cm = milli-Siemans per centimeter

Pacific Northwest Power Planning and Conservation Act: The Pacific Northwest Power Planning and Conservation Act of 1980 (16 U.S.C. 839 et. seq.), which authorized the creation of the Northwest Power Planning Council and directed it to develop this program to protect, mitigate and enhance fish and wildlife, including related spawning grounds and habitat on the Columbia River and its tributaries.

Ppt: Parts per thousand.

Redd: the specific location in a river where a female fish lays her eggs and buries them in gravel for incubation.

Riparian: Growing or living on the banks of a stream.

River kilometers (rkm): The distance the river travels between two given points, measured in kilometers.

Threatened: Under the Endangered Species Act, those species officially designated by the U.S. Fish and Wildlife Service as likely to become endangered within the foreseeable future through all or a significant portion of their range. Threatened species are protected by law. See *Endangered*.

Trophic Level: The position of a species in the food web or chain, i.e., its feeding level. It represents a step in the movement of biomass or energy through an ecosystem.

µg/L: Micrograms per liter. Parts per billion.

V or cells·mL: V = volume or algal cells per liter.

7.0 References

- Allendorf, F. W., D. M. Espeland, D. T. Scow, and S. Phelps. 1980. Coexistence of native and introduced rainbow trout in the Kootenai River drainage. *Proceedings of the Montana Academy of Sciences* 39:28-36.
- American Wetlands Campaign Web site. Accessed March 11, 2005. Wetland definitions. (http://www.iwla.org/sos/awm/kit_defn.html).
- Anders, P.A., R. Hardy, and C. Holderman. 2005. A Biomonitoring Protocol Manual for the Kootenai River. KTOI Document, in preparation.
- Arvidson, Mike. December 18, 2004. Idaho Conservation Data Center, personal communication.
- Ashley, K.A., and 10 others. 1997. Kootenay Lake Fertilization Experiment- Year 4 Report. Fisheries Project Report No. RD 58. Province of British Columbia, Ministry of Environment, Land and Parks, Fisheries Branch.
- Ashley, Ken. July 21, 2004. BCMLWAP, personal communication, IKERT Conference.
- Ashley, Ken. February 3, 2005. BCMLWAP, personal communication.
- Ashley, K. I., and J. G. Stockner. 2003. Protocol for applying limiting nutrients to inland waters. Pages 245-258 *in* J.G. Stockner, editor. *Nutrients in salmonid ecosystems: sustaining production and biodiversity*. American Fisheries Society, Symposium 34, Bethesda, Maryland.
- Bangs, Ed and Kent Laudon. December 13, 2004. USFWS, personal communication.
- Behnke, R. J. 1992. Native trout of western North America. American Fisheries Society, Monograph 6.
- Downs, C. C. 1999. Kootenai River fisheries investigations: Rainbow trout recruitment. 1997 Annual report to Bonneville Power Administration. Project 88-65. Idaho Department of Fish and Game, Boise, Idaho.
- Downs, C. C. 2000. Kootenai River fisheries investigations: Rainbow trout recruitment. 1998 Annual report to Bonneville Power Administration. Project 88-65. Idaho Department of Fish and Game, Boise, Idaho.
- Dunnigan, James. October 2003. MFWP. Personal communication.
- Dunnigan, James. November 2003. MFWP. Personal communication.
- French, Vicki. March 10, 2005. Lincoln County Courthouse. Personal communication.
- Griswold, R.G., D. Taki, J.G. Stockner. 2003. Redfish Lake Sockeye Salmon: Nutrient Supplementation as a means of restoration. *In*: J. Stockner (ed). *Nutrients in Salmonid Ecosystems: Sustaining Production and Biodiversity*. American Fisheries Society Symposium 34:197-211.
- Hardy, R.S. 2003. Kootenai River fisheries recovery investigations: ecosystem rehabilitation. Annual progress report to Bonneville Power Administration, April

- 1, 2002-March 31, 2003. Project 1988-06500. Report Number 04-01. Idaho Department of Fish and Game, Boise, Idaho.
- Hardy, R.S., and C. Holderman. 2004. Kootenai River Fisheries Investigations: Ecosystem Rehabilitation Project; Nutrient Restoration Work Plan.
- Hardy, R.S., C. Holderman, and J.P. Walters. 2005. Biological assessment for proposed nutrient restoration of the Kootenai River, Idaho. Prepared and submitted in compliance with NEPA documentation for the Bonneville Power Administration.
- Holderman, Charles. February 4, 2005. KTOI, personal communication.
- Holderman, Charles E., and Ryan Hardy, Editors. June 2004. Kootenai River Ecosystem Project: An Ecosystem Approach To Evaluate And Rehabilitate A Degraded, Large Riverine Ecosystem. Final Report to BPA. Portland, Oregon. Project Number 1994-049-00.
- Hoyle, Genevieve. February 2005. Kootenai River Fertilization Water Quality Monitoring Proposal for 2005. Prepared for the KTOI Ecosystem Project.
- Idaho Conservation Data Center. Accessed March 18, 2005. Available at: <http://fishandgame.idaho.gov/wildlife/nongame/specialspecies.cfm#fish>.
- Ives, Ryan. March 2005. Cultural Resources Survey of the Bonneville Power Administration's Kootenai River Nutrient Dosing Project, Lincoln County, Montana.
- Kasworm, Wayne. December 3, 2004. USFWS, personal communication.
- Knudson, K. 1993. Water Quality Status Report, Kootenay River Basin, British Columbia, Montana and Idaho. The Kootenai River Network.
- Kootenai Tribe of Idaho and the Montana Department of Fish, Wildlife and Parks. 2004. Kootenai River Subbasin Assessment. A report prepared for the Northwest Power and Conservation Council.
- Kuennen, Lou. March 12, 2005. E-mail to Ryan Hardy regarding soil types. Personal Communication.
- G.A. Larkin, G. Wilson, K.I. Ashley, P.A. Slaney, R.W. Land, and S. Biancolin. 1997. Development of a Premier Northern Fishery: Mesilinka River, the Fourth Year of Fertilization (1997).
- Larkin, G.A., G. Wilson, K.I. Ashley, P.A. Slaney, R.W. Land, and S. Biancolin. 1999. Development of a premier northern river fishery: Mesilinka River, the fourth year of fertilization Fisheries Project Report No. RD 70. Province of British Columbia Ministry of Fisheries.
- Laudon, Kent. December 13, 2004. USFWS, personal communication.
- Laudon, Kent. June 4, 2005. Montana Department of Fish, Wildlife and Parks, Wolf Management Specialist, personal communication.
- Lincoln County Web Site. Accessed March 18, 2005. Burning Permits. Available at: http://www.lincolncountymt.us/fire_co-op.htm.

- Mech, L.D. 1970. *The Wolf: the ecology and behavior of an endangered species*. Doubleday, New York, N.Y. 389 pp.
- Mincemoyer, Scott. December 5, 2004. USFS, personal communication.
- Mosely, R and C Murphy. 2002. *Ute Ladies Tresses in Idaho: 1999 and 2000 Status Report*. BLM Technical Bulletin no. 02-1.
- Paragamian, V. L. 1995a. Kootenai River fisheries investigation: Stock status of burbot and rainbow trout and fisheries inventory. Idaho Department of Fish and Game, 1994 Annual Report to Bonneville Power Administration, Project 88-65. Boise, Idaho.
- Paragamian, V. L. 1995b. Kootenai River fisheries investigations: Stock status of burbot and rainbow trout and fisheries inventory. Idaho Department of Fish and Game, 1995 Annual Report to Bonneville Power Administration, Project 88-65. Boise, Idaho.
- Paragamian, V.L. December 5, 2004. IDFG, personal communication.
- Paragamian, V.L. January 2, 2005. Personal communication.
- Paragamian, V. L., V. Whitman, J. Hammond, and H. Andrusak. 2000. Collapse of the burbot fisheries in Kootenay Lake, British Columbia, Canada, and the Kootenai River, Idaho, USA, post-Libby Dam. Pages 155-164 *in* V. L. Paragamian and D. W. Willis, editors. *Burbot: biology, ecology, and management*. American Fisheries Society, Fisheries Management Section, Publication Number 1, Bethesda, Maryland.
- Partridge, F. 1983. *Kootenai River Fisheries Investigations*. Idaho Department of Fish and Game. Completion Report. Boise, ID.
- Petersen, R.O. 1977. *Wolf ecology and prey relationships on Isle Royale*. United States National Park Service Fauna Service 11, Washington, D.C. 210 pp.
- Peterson, J.P., L. Deegan, J. Helfrish, J.E. Hobbie, M. Hullar, B. Moller, and others. 1993. Biological responses of a tundra river to fertilization. *Ecology*. 74: 653-672.
- Robinson, Scott. November 22, 2004. Bureau of Land Management, personal communication.
- Ryan, Jeff. January 2004. MDEQ, personal communication.
- Scholz, Allen and 9 co-authors. 1985. *Compilation of information on salmon and steelhead total run size, catch and hydropower related to losses on the Upper Columbia River Basin, above Coulee Dam*. Fisheries Tech. Report No. 2. UCUF fish. Centre. Eastern Washington Univ., Cheney, WA.
- Snyder, E.B., and G.W. Minshall. 1996. *Ecosystem metabolism and nutrient dynamics in the Kootenai River in relation to impoundment and flow enhancement for fisheries management*. Final Report. Stream Ecology Center, Idaho State University, Pocatello, Idaho.
- Stalmaster, M V. 1987. *The bald eagle*. Universe Books, New York; 238p.

Stockner, John G. 2003. Nutrients in Salmonid Ecosystems: Sustaining Production and Biodiversity. American Fisheries Society Symposium 34. American Fisheries Society, Bethesda, MD.

- U.S. Army Corps of Engineers. 1987. Corps of Engineers Wetlands Delineation Manual.
- U. S. Department of Agriculture, Forest Service. 1987. Kootenai National Forest Plan Final Environmental Impact Statement.
- U. S. Department of Agriculture, Forest Service. 1995. Soil Survey of the Kootenai National Forest Area, Montana and Idaho.
- U. S. Department of Agriculture, Forest Service. 2002. Final Environmental Impact Statement: Forest Plan Amendments for Motorized Access Management within the Selkirk and Cabinet-Yaak Grizzly Bear Recovery Zones.
- U.S. Department of the Interior, Fish and Wildlife Service. 1975. Endangered and Threatened Wildlife and Plants; Amendment Listing the Grizzly Bear of the 48 Conterminous States as a Threatened Species; 40 FR 31734, 31736 (July 28, 1975).
- U.S. Department of the Interior, Fish and Wildlife Service. 1978. Endangered and Threatened Wildlife and Plants; Reclassification of the Gray Wolf in the U.S. and Mexico with Determination of Critical Habitat in Michigan and Minnesota, 43 Fed. Reg. 9607, 9615 (March 9, 1978).
- U.S. Department of the Interior, Fish and Wildlife Service. 1995. Grizzly Bear, Wildlife Species Information: U.S. Fish and Wildlife Service, available at http://species.fws.gov/bio_griz.html.
- U.S. Department of the Interior, Fish and Wildlife Service, Snake River Basin Office. 1997. Threatened, Endangered, Candidate, and Species of Concern: Biological Information and Guidance.
- U. S. Department of the Interior, Fish and Wildlife Service. 1999. Recovery Plan for White Sturgeon (*Acipenser transmontanus*): Kootenai River Population. U. S. Fish and Wildlife Service, Portland Oregon. 96 pp. plus appendices.
- U.S. Department of the Interior, Fish and Wildlife Service. 2003. Endangered and Threatened Wildlife and Plants; Final Rule to Reclassify and Remove the Gray Wolf From the List of Endangered and Threatened Wildlife in Portions of the Conterminous United States; Establishment of Two Special Regulations for Threatened Gray Wolves, 50 C.F.R. pt. 17 (2003).
- U.S. Department of the Interior, Fish and Wildlife Service. October 21, 2004. Letter to BPA-Species List.
- U.S. Department of the Interior, Fish and Wildlife Service. May 16, 2005. Letter to BPA.
- Wakkinen, Wayne. December 3, 2004. IDFG, personal communication.

- Walters, J. P. 2002. Kootenai River fisheries investigations: rainbow and bull trout recruitment. Annual progress report to Bonneville Power Administration, April 1, 2000-March 31, 2001. Project 1988-06500. Idaho Department of Fish and Game, Boise, Idaho.
- Walters, J. P. 2003. Kootenai River fisheries investigations: rainbow and bull trout recruitment. Annual progress report to Bonneville Power Administration, April 1, 2001-March 31, 2002. Project 1988-06500. Idaho Department of Fish and Game, Boise, Idaho.
- Walters, J. P. 2004. Kootenai River fisheries investigations: rainbow and bull trout recruitment. Annual progress report to Bonneville Power Administration, April 1, 2002-March 31, 2003. Project 1988-06500. Idaho Department of Fish and Game, Boise, Idaho.
- Walters, J. P., and C. C. Downs. 2001. Kootenai River fisheries investigations: rainbow and bull trout recruitment. 1999 Annual report to Bonneville Power Administration. Project 1988-06500. Idaho Department of Fish and Game, Boise, Idaho.
- Williams, Dan. February 28, 2005. Lincoln County Weed Department. Personal communication.
- Wilson, G., K. Ashley, E. Standen, S. Mouldey Ewing, P. Slaney and R. Land. 1999a. Development of a Resident Trout Fishery on the Adam River Through Increased Habitat Productivity: Final Report of the 1992-97 Project. Fisheries Project Report No. RD 68. Province of British Columbia, Ministry of Fisheries.
- Wilson, G., K. Ashley, S. M. Ewing, P. Slaney, R.W. Land. 1999b. Development of a premier river fishery: the Big Silver Creek Fertilization Experiment, 1993-1997. Final project report. Fishery Project Report No. RD 69. Province of British Columbia Ministry of Fisheries Research and Development Section.

Appendix A Public Comments

-----Original Message-----

From: Brandon C Smith [<mailto:brandoncsmith@fs.fed.us>]
Sent: Wednesday, April 20, 2005 8:22 AM
To: Spiering, Colleen A - KEC
Subject: Re: Kootenai pEA

At this point in time, the only items I recommend that you elaborate or clarify the following:

3.11.1: On addition to the last sentence, please add the mitigation items that are going to be performed: tank blending, security, on-site person, etc. I know you have mentioned these items throughout the document, but it adds to the clarity if also placed here.

4.8: The legal description looks good for the NFSL, but for private, the legals should read: "E1/2SW1/4SW1/4SW1/4". The commas in your current version indicate separate aliquot parts.

Brandon Smith
Realty Specialist/Lands
Kootenai NF SO
1101 Hwy 2 West
Libby, MT 59923
Phone: (406) 283-7785
Fax: (406) 283-7709
Email: brandoncsmith@fs.fed.us
~~~~~

KRPEA-002  
APR 22 2005

**Kuehn, Ginny - DM**

---

**From:** den123@hctc.com  
**Sent:** Thursday, April 21, 2005 9:14 PM  
**To:** BPA Public Involvement  
**Subject:** Comment on Kootenai River Ecosystem Restoration

**Comment on Kootenai River Ecosystem Restoration**  
View open comment periods on <http://www.bpa.gov/comment>

Karl Denison  
US Citizen  
den123@hctc.com  
360-898-2618  
1739 E. McReavy WA  
UNION WA 98592

I oppose the adding of liquid N directly into a natural water body. If the purpose is to enhance fish production, then reduce fish harvest and allow more spawners to die. We don't allow septic tank discharge directly into streams and we shouldn't allow man to discharge Liquid N into streams either. Increasing LWD in the riparian zone is another preferred method. Sincerely, Karl Denison

4/22/2005

-----Original Message-----

From: Cleve Shearer [<mailto:idadamont@gmail.com>]  
Sent: Sunday, April 24, 2005 9:09 PM  
To: Spiering, Colleen A - KEC  
Cc: patty@kootenai.org  
Subject: Kootenai River Ecosystems Project

We are long time residents of the area and own property and live along the river approximately two miles below the mouth of the canyon. We also very familiar with the Leonia site.

I have fished the river for over forty four years and have seen it decline from a combination of circumstances, mainly (pre- dam) from loss of spawning habitat in tributary streams, loss of wetlands, and upstream pollution, especially mining and pulpmill waste from the Canadian side, and to a lesser extent, the effects of the Zonelite mine on Rainy Creek, the Libby mill on Libby Creek, and sewage from Libby.

The pollution problems have been pretty well resolved, but the problems with side stream spawning habitat remain, and of course, the problems associated with Libby Dam (entrapment of nutrients) and the operation of the dam (fluctuating flows, unnatural flows and temperatures). The BPA has made some effort in recent years to manage the dam so that flows are more natural and there is less short term fluctuation, but low nutrient levels below the mouth of the Yaak remain a serious problem.

I strongly support the program to introduce nutrients at Leonia- unless the river can be made more productive, other efforts to recover species are almost an exercise in futility.

Thank you,  
Cleve Shearer  
PO Box 173  
Bonners Ferry  
Idaho 83805



File Code: 2700

Date: May 4, 2005

Communications - DM -7  
Attn: Colleen Spiering  
Bonneville Power Administration  
P.O. Box 14428  
Portland, OR 97293-4428

RE: Kootenai River Ecosystems Project Preliminary EA

Dear Colleen,

In regards to your letter dated April 18, 2005 requesting comments to your preliminary Environmental Analysis, we have the following recommendations/comments:

- 2.1.7: National Forest System Land should be capitalized
- 2.2 No Action Alternative: if BPA doesn't fund the research and placement of nutrients, could the project proceed with other funding?
- Table 2: National Forest System Land should be capitalized
- 3.0 Affected Environment and Environmental Consequences  
There is no discussion of cumulative effects for the various wildlife and fish species addressed other than under Westslope cutthroat trout (3.1.6).  
  
Somewhere in this section, there should be a discussion of what other activities (past, proposed, and reasonably foreseeable activities are being considered in the cumulative effects analysis.) It is also difficult to determine whether the effects discussions refer to private lands, federal lands, or both.
- 3.3.1: No mention of the transition platform, photovoltaic panels and security fence as to the visuals- please elaborate
- 3.3.2: What about moving the PV panels to private land and running wire on the ground to the meters, etc? This may reduce the visual impact to this area.
- 3.8.4 Cumulative Impacts (Cultural Resources): states "no cumulative impacts would occur" even though under 3.8.2 the historic Moyie-Sylnite wagon road would be used to access the tank location, a portion of the road would



be improved, and the private portion of the road had already been impacted by logging activities.

- 3.9.1 Affected Environment (Vegetation): the vegetation description should be focused on the treatment site and adjacent lands. Although the first paragraph provides a good overview of the vegetation types on the Kootenai National Forest and helps to provide context for the discussion, there is virtually no description of the vegetation found on the affected NFS land.

It is stated that the above ground HWM pipe from the tanks to the river would be in Kootenai NF Management Area 13. It also needs to be stated that this management area is Designated Old-Growth Timber. The goal of this management area is to provide the special habitat necessary for old-growth dependent wildlife rather than as the EA describes as "...managed for wildlife habitat, not timber production."

Because of the public concern for management activities in designated old growth, the potential impacts to old growth, particularly on National Forest lands needs to be specifically addressed. Would trees be removed on National Forest lands?

- 3.10.2 Potential Impacts of the Proposed Action: EA states that "erosion control measures would reduce potential impacts." Where are these erosion control measures described?

- 3.11.1: On addition to the last sentence, please add the mitigation items that are going to be performed: tank blending, security, on-site person, etc.

- 4.8: Correct citation for the legal description is: (E1/2SW1/4SW1/4SW1/4 of section 17, Township 33 North, Range 34 West, Principle Meridian Montana as shown on Certificate of Survey No. 2800); and same ending for the notation of the National Forest System Lands

- 4.14.1: This citation is incorrect: the web site may have stated incorrect dates for burn permits outside the City of Libby impact zone. The County is currently reviewing the data to make revisions to the dates. There are two open burning periods each year that do not require burn permits. One period is in the spring and another in the fall after the normal statewide fire season dates of May 1 through September 30.

- 4.1 National Environmental Policy Act: in the last sentence Categorical Conclusion should be Categorical Exclusion.

- 5.0: The correct name for the USDA Forest Service (Troy Ranger Station) is (**Three Rivers** Ranger Station)

Please contact Brandon Smith at (406) 283-7785 with any further communications involving this project.

Sincerely,

*Bob Castaneda*

BOB CASTANEDA  
Forest Supervisor

cc: Mike Balboni, John Gubel





REPLY TO  
ATTENTION OF

**DEPARTMENT OF THE ARMY**  
SEATTLE DISTRICT, CORPS OF ENGINEERS  
P.O. BOX 3755  
SEATTLE, WASHINGTON 98124-3755

CENWS-PM-PL-ER

MAY 5 2005

Ms. Colleen Spiering  
Bonneville Power Administration  
Communications—DM-7  
PO Box 14428  
Portland, OR 97293

Subject: Kootenai River Ecosystems Project Preliminary EA


Dear Ms. Spiering:

Thank you for the opportunity to review the subject preliminary environmental assessment. We are among the entities involved with recovery of listed species in the Kootenai River, and of the Kootenai ecosystem. We support the effort you outline in your proposed action.

Enclosed are our comments on the EA. We hope you find them useful and constructive. If you have any questions, please contact Mr. Jeff Laufle of my section at 206-764-6578, or [jeffrey.c.laufle@usace.army.mil](mailto:jeffrey.c.laufle@usace.army.mil).

Again, thank you very much.

Sincerely,

  
for Mark Ziminske  
Chief, Environmental Resources Section

enclosure

US Army Corps of Engineers, Seattle District:  
Comments on Preliminary Kootenai River Ecosystems Project Environmental Assessment

General: We support the goals and intent of this project.

General: There should be at least a short introduction in the EA itself, explaining that it is being prepared pursuant to NEPA.

Sec. 1.2, last para./bullets: It would seem useful to add the Kootenay Lake fertilization program as an example also; there seems no reason to exclude actions in the same basin as the proposed project. Also, some more background details about how nutrient additions work in rivers, and why artificial nitrification is considered useful despite its maintenance-intensive nature, would help the reader.

Sec. 1.3: Purpose statements seem well-crafted to bring out issues without preconceiving solutions.

Sec. 1.4: Not sure why Kootenay Lake fertilization has been left out of this list, particularly given its close relation to the proposed project. Suggest including it.

Sec. 1.4: Maybe also want to include VARQ alternative flood control, and sturgeon flow implementation, from Libby Dam.

Sec. 2.1: What reasons were expressed by the State of Montana for its request that no nutrient additions occur within its boundaries? Citation is a personal communication from a MDFWP biologist. Was that a formal letter? Did it reflect Montana DEQ's position? Was fertilization formally proposed to occur in Montana at any point? See also question re: Sec. 2.1.1.

Sec. 2.1.1: Is Montana's desire not to have nutrients added within its boundaries the basic reason for the project placement, or are there also technical reasons why the chosen location is preferred by the proponents?

Sec. 2.1.2, para. 2: Seems that 100 by 60 meters is pretty large for the project site, even with a truck turn-around. Are those figures correct?

Sec. 2.1.2, para. 4: Mentions reducing risk of fire. Does that account for any higher-level risks from forest fires in the immediate area?

Sec. 2.1.4: Can you confirm that the containment berms and liners around the tanks could capture the entire contents of a full tank in the unlikely event it should rupture? Narrative is not entirely clear on that.

Sec. 2.1.6, Adaptive Management: Are specific numerical criteria being set up to test hypotheses concerning effects of the action?

Sec. 2.4, and Sec. 3 (particularly 3.1.3 and 3.5.3): Effects of the no-action alternative need to be evaluated explicitly, alongside the effects of the preferred alternative. See CEQ regs (40 CFR

US Army Corps of Engineers, Seattle District:  
Comments on Preliminary Kootenai River Ecosystems Project Environmental Assessment

1500-1508), Sec. 1502.14, which calls for inclusion of the no-action alternative in the analysis. Table 2 and Sec. 3 indicate no impacts are expected from the no-action alternative. However, the fact that the no-action alternative is the status quo does not mean its impacts are zero. The impacts in this case would be the continuation of effects from a nutrient-poor situation—in other words, the negative effects that the project is proposed to address. The last cell in the third row of Table 3 actually acknowledges this with a sentence (“Current impacts to the Kootenai River ecosystem continue.”) which conflicts with the other sentence in that cell. Last cell in fourth row also acknowledges impacts of no action. Your general, introductory type narratives on the lack of nutrients in the river get at the heart of the impacts you are trying to address, so it’s a matter of expanding that to specific resource impact areas.

Sec. 2.4, Table 2: Suggest moving viewshed reference from Recreation row to Visual Resources row, within Proposed Action column.

Sec. 3.1: There is good discussion of impacts to sensitive, threatened and endangered species in subsections of this section, but nothing explicit about other fish species. Insects are mentioned in reference to their role as food for fish, but nothing more than that. Suggest a little more treatment of these if possible.

Sec. 3.1: Some restructuring appears necessary. Draft has:

- 3.1.1 Affected Environment
- 3.1.2 Impacts of the Proposed Action
- 3.1.3 Impacts of the No Action Alternative
- 3.1.4 Threatened and Endangered Species
- 3.1.5 Species of Special Concern
- 3.1.6 Cumulative Impacts

Secs. 3.1.4 and 3.1.5 contain information for each species that should go under 3.1.1 and 3.1.2 (as well as 3.1.3—see comment above on Sec. 2.4 and Sec. 3 regarding no-action alternative), rather than being at the same level as those sections. Or, you could make T&E spp. and Species of Special Concern their own section separate from Fish and Wildlife, but that leaves very little substance under Fish and Wildlife.

Sec. 3.1.1: Needs at least some specific mention of aquatic resources the project is supposed to benefit, besides the reference to T&E species in Sec. 3.1.4.

Sec. 3.1.2, para. 2: Good acknowledgement of possible unintended consequences.

Sec. 3.1.3 and subsequent references to impacts of no-action alternative: See comment for Sec. 2.4 concerning impacts of no-action alternative.

Sec. 3.1.4. No caps when writing names of white sturgeon, bald eagle. In subsection on grizzly bears, first paragraph, by “human fear” as a cause of bear decline, do you mean wanton killing of bears by fearful humans?

Sec. 3.1.5: First sentence under burbot, the words “endemic only” are redundant.

US Army Corps of Engineers, Seattle District:  
Comments on Preliminary Kootenai River Ecosystems Project Environmental Assessment

Sec. 3.5.2, first para.: States effective distance of treatment is downstream as far as Bonners Ferry. Is there any anticipated secondary effect further down, especially if fish populations increase and transport nutrients as far as Kootenay Lake? If so, what would be the possible effect of that in relation to fertilization going on in Kootenay Lake? (Transboundary effects should be analyzed if possible, according to CEQ.)

Sec. 3.5.2, Total Organic Carbon, 2<sup>nd</sup> para.: What northern rivers experienced a lag for invertebrates to increase? After what treatment?

Sec. 3.5.2, Total Organic Carbon, 2<sup>nd</sup> para.: Change ug/L to µg/L (in Word, it's in the Character Map). Same change for any other occurrences of that usage (such as in section about metals). Explain for public audience that it means micrograms per liter. In fact, a list of scientific abbreviations in or adjacent to the glossary would be useful for the general public, who are the target audience of this document.

Sec. 3.5.2, Metals: Good discussion of secondary effect from sources of phosphates.

Sec. 4.0: No mention of Clean Water Act? Is a Sec. 401 permit required?

Kootenai River Ecosystems Project  
Preliminary EA

KRPER-007

MAY 06 2005

I received your letter about the Kootenai river,  
you & agree something must be done to get the  
quality of fish back into the river system.

I was raised at Bonners Ferry, Idaho. My grand-  
parents came there in 1903 from Iowa. Their  
names were J. J. Edwards & Harriet Laid Edwards.  
Their homestead was where the 3 mile junction  
of highway 2 & 95, north of Bonners Ferry.

I fished that river from the time I could walk  
till I married & move away. My uncle is the  
only man I know who fished that river & made  
a living from it. He caught I think the biggest  
sturgeon ever. Then the sturgeon was plentiful  
as was the trout & whitefish. I swim that river & fish  
on its banks. My grandmother was a full blood Cherokee  
Indian, who valued the river system and what it gave  
to us.

If what your plan will help the river & put fish  
back into the system that are healthy then you  
have my blessing, I still fish the river & enjoy it.

The river gives & it takes, but where can you go  
& still see greenish blue water flowing away. I know  
what the river can do. The dangers & the pleasures from  
the river are what a person makes it. The river  
demands respect.

Good luck to you

Luis Albent  
P.O. Box 1403  
Libby, MT. 59923



Robert A. Petrusha  
551 Florence Rd.  
Libby, Montana 59923

From the Desk of . . .

Date \_\_\_\_\_

Robert Petrusha

To: \_\_\_\_\_  
Subject KOOTENAI RIVER DEPLETED!

WHAT ABOUT THE KOOTENAI  
NORTH THRU MONTANA TO  
CANADA?!

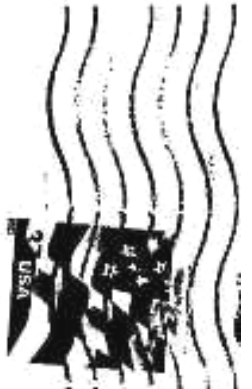
IT HAS THE SAME "SICK"  
WATER! DOESN'T IT WARRANT  
THE SAME ATTENTION AND  
CONCERN?

ARE YOU CATERING TO  
MINORITIES

PUT THE FEEDING STATION  
AT THE LIBBY DAM AND  
TAKE CARE OF THE WHOLE  
PROBLEM!

*Robert Petrusha*

DM-73





wildidaho.org

**Idaho Conservation League**

PO Box 844, Boise, ID 83701 208.345.6933 Fax 208.344.0344

MAY 10 2005

KRPEA-00

BPA Communications Office  
DM-7  
PO Box 14428  
Portland, OR  
97293-4428

May 5, 2005

**RE: Idaho Conservation League comments on the Kootenai River Ecosystems Project EA**

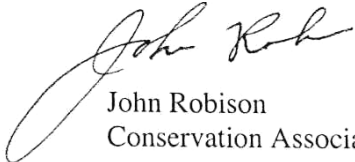
Dear BPA,

Thank you for the opportunity to comment on the Kootenai River Ecosystems Project EA. For thirty years, the Idaho Conservation League has worked to preserve Idaho's clean water, wilderness, and quality of life. For more information (or to become a member!), go to <http://www.wildidaho.org>. As Idaho's largest statewide conservation organization, we represent members from around the state -- many of whom have a deep personal interest in seeing our rivers restored to healthy and historic ecologic conditions. We firmly believe that healthy communities depend on healthy rivers.

As stated in our scoping comments, we believe that the focus on artificially enhancing nutrients is a short-term fix and that the DOE should focus on longer-term solutions that allow the restoration of natural nutrient cycling to the greatest extent possible. The DOE should consider other factors such as floodplain restoration, water quality improvements, and simulating historic stream flows. We were disappointed to find that our comments were only briefly mentioned in the preliminary EA and were not incorporated in the preliminary EA in a meaningful way. We encourage the DOE to fully address these concerns in the final EA.

We have attached our comments at the end of this letter. Please consider our original comments as well. Please keep us on the list to receive future documents related to this matter and feel free to contact me if you have any questions related to these comments.

Sincerely,



John Robison  
Conservation Associate

Idaho Conservation League scoping comments on the  
Kootenai River Ecosystems Project

**Purpose and need**

As stated before, while increases in sport fishing may be desirable, the project should focus on restoring species at risk. The management objectives should support restoring or maintaining viable populations of white sturgeon, burbot, bull trout, and kokanee wherever feasible. As such, simply boosting nutrients may be insufficient and the agencies should consider other factors such as stream flows, timing, and water quality.

**Historic conditions**

While we support returning the river ecology towards historic conditions, the BPA needs to better define these conditions and the data used to support these findings. The BPA should describe historic nitrogen and phosphorus levels, current levels, and levels that would be achieved through this project. The historic timing and variability of these nutrient pulses should be analyzed as well. Presumably, nutrient levels also peaked following periodic wildfires. The BPA should compare the expected results of this project with historic results following wildfires. Perhaps an experimental prescribed burning component could even be included as part of this research project.

**Limiting factors**

The BPA should describe the limiting factors to white sturgeon, burbot, and bull trout and describe how this project addresses these concerns. If these limiting factors are not addressed, the BPA should add components to this project to address them.

**Nutrient containment**

We believe that the thick plastic liner underneath the holding tanks needs to be backed up with a clay, secondary containment liner as well as a leak detection and removal system. The proposed leak pump should have a backup alarm system with an independent power source. The transition box at the bottom needs to be large enough to accept spill from the storage tanks as well as any meteoric water.

**Transition box**

We are concerned that the mixing zone is still too large and may present a hazard to organisms. We believe that the DOE should consider diverting some water from the river into another transition box so that the released nutrients will already be partially diluted.

**Nutrient ratio**

The BPA needs to describe the ideal nitrogen-phosphorus ratios and how these ratios will be mixed and monitored.

**Monitoring**

We appreciate the fact that several variables will be monitored extensively. Monitoring reports should be made available to the public at several points throughout the year.



**Nutrient sources still not defined**

The BPA should describe the sources of the nitrogen and phosphorus used and the environmental impacts of producing it. BPA should obtain all nutrients from environmentally sensitive sources. Idaho's phosphate industry has experienced chronic problems with harmful selenium levels in surface and groundwater. Yellowstone cutthroat trout in some of these streams have been deemed hazardous to human consumption by the Idaho Department of Health and Welfare. It would be ironic for BPA to restore a fishery with a material that poisons another fishery in the process.

**Impurities still a concern**

Because phosphate often contains impurities such as selenium, we are concerned about how these impurities will be filtered out. If these impurities enter the river, the BPA needs to describe how the levels of each metal compare with historic and background levels.

**Sustainability**

The BPA needs to describe the sustainability of this nutrient enhancement project. The BPA needs to consider other options that may be more economically and ecologically sustainable in the long term.

**Alternatives**

As stated before, the BPA should consider restoring the floodplain of the Kootenai River as an integral component of this project. Restoring these riparian areas and adding seasonal high flow events from the Libby Dam will enable nutrients to enter the river system in a more sustainable and less artificial manner. Even if this floodplain restoration system adds only 5% of the nutrients as the artificial method, this amount could be increased gradually as more and more of the floodplain becomes restored. In addition, the floodplain restoration would have additional benefits to the ecological and human community through improved wildlife habitat, hunting, recreation, water quality, and flood control from side drainages.

**Start**

Because of the uncertainties involved, we recommend starting this project slowly and in a controlled manner before implementing this project at full scale. One option would be to start with tributaries with smaller flows. The BPA should include more details where this technology has been successfully used.

**Habitat loss and degradation**

The Idaho Department of Fish and Game should provide more details on how current dam operations affect quality, quantity and timing of flows and how these effects can be mitigated. Likewise, the effects of irrigation, agricultural runoff, industrial outflow, logging, mining, and grazing operations on water quality need to be assessed. The plan should utilize or establish TMDLs for specific tributaries within each river segment so that water quality improvements are quantifiable.