



# Project Assessment and Reporting System (PARS II)

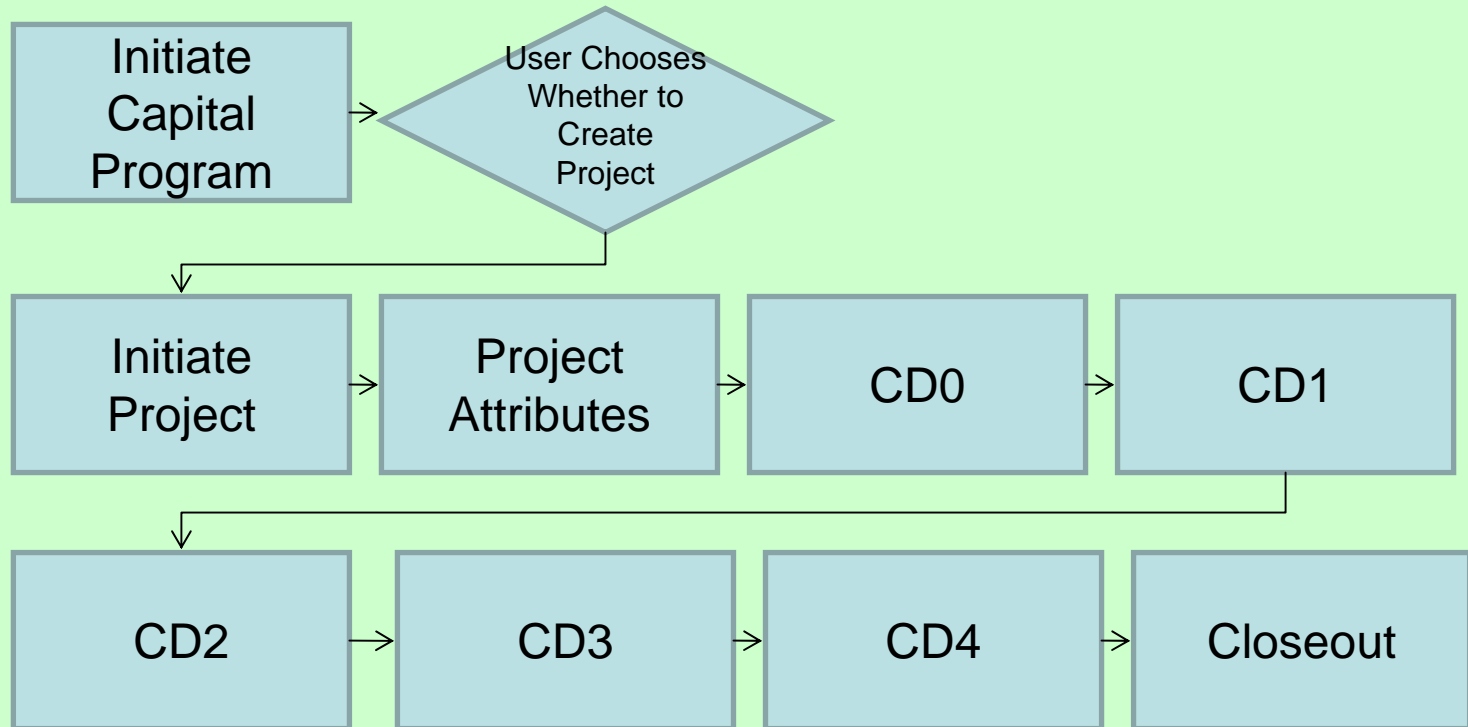
## **Oversight & Assessment Screens**

As of May 21, 2009

This final set of screens, once approved by OECM, will be sent to Dekker for configuration of the PARS II Oversight and Assessment module. EES/Dekker Team



# Program/Project Creation Flow





# Initiating a Capital Program

## PARS II

### Program Attributes

Status Date  
Dropdown

Initiate/Update a  
Capital Program

Initiate/Update a  
Project

Project/CD  
Overview

Add BCP

Monthly Status  
Reporting

Update Budget

View KPPs

Update Other  
Attachments

2. Level 1:  
Program

3. Level 2:  
Program Office

4. Level 3:  
Capital Program

5. Capital Program  
Description\*

28. Federal Program  
Manager\*

29. FPM  
Certification Status\*

| Projects  | TPC | ECD |
|-----------|-----|-----|
| Project 1 |     |     |
| Project 2 |     |     |
| Project 3 |     |     |
| TOTALS    |     |     |

PY

NTB

OPER

LCC



# Initiate/Update a Project

**PARS II**

Selected Project Name

**Project Attributes**

**Project Contacts**

|                                   |                             |                            |                                  |                         |
|-----------------------------------|-----------------------------|----------------------------|----------------------------------|-------------------------|
| Status Date Dropdown              | 2. Level 1: Program         | 3. Level 2: Program Office | 4. Level 3: Capital Program      | 6. PARS Project ID      |
| Initiate/Update a Capital Program | 7. DOE Project Number       | 8. Project Name            | 9. Project Acronym*              | 10. Project Description |
| Initiate/Update a Project         | 11. Project Type 1          | 12. Project Type 2         | 214. Program Point of Contact    | 32. FPD Name            |
| Project/CD Overview               | 215. OECM Analyst           |                            |                                  |                         |
| Add BCP                           | 17. Project Location*       | 16. Project Site Code      | 18. Prime Contractor Name        |                         |
| Monthly Status Reporting          | 13. Project Activity Status | 14. Project On Hold*       | 15. Project of Special Interest* |                         |
| Update Budget                     | Date Updated                | Updated By                 |                                  |                         |
| View KPPs                         |                             |                            |                                  |                         |
| Update Other Attachments          |                             |                            |                                  |                         |



# Initiate/Update a Project

**PARS II**

Selected Project Name

**Project Attributes**

**Project Contacts**

|                                   |                             |                            |                                  |                         |
|-----------------------------------|-----------------------------|----------------------------|----------------------------------|-------------------------|
| Status Date Dropdown              | 2. Level 1: Program         | 3. Level 2: Program Office | 4. Level 3: Capital Program      | 6. PARS Project ID      |
| Initiate/Update a Capital Program | 7. DOE Project Number       | 8. Project Name            | 9. Project Acronym*              | 10. Project Description |
| Initiate/Update a Project         | 11. Project Type 1          | 12. Project Type 2         | 214. Program Point of Contact    | 32. FPD Name            |
| Project/CD Overview               | 215. OECM Analyst           |                            |                                  |                         |
| Add BCP                           | 17. Project Location*       | 16. Project Site Code      | 18. Prime Contractor Name        |                         |
| Monthly Status Reporting          | 13. Project Activity Status | 14. Project On Hold*       | 15. Project of Special Interest* |                         |
| Update Budget                     | Date Updated                | Updated By                 |                                  |                         |
| View KPPs                         |                             |                            |                                  |                         |
| Update Other Attachments          |                             |                            |                                  |                         |



# Project Contact Assignments

**PARS II**

Selected Project Name

Project Attributes

Project Contacts

| 216. Contact Name | 217. ORG | 218. Role on Proj. | 219. Title   | 220. Date Assigned | 221. Date Unassigned | 222. Phone | 223. Email | 224. Address |
|-------------------|----------|--------------------|--------------|--------------------|----------------------|------------|------------|--------------|
| John Doe          | EM       | FPD                | FPD          |                    |                      |            |            |              |
| Jane Smith        | Bechtel  | Contract or POC    | Contract or  |                    |                      |            |            |              |
| Jimmy Mack        | EM       | COR                | COR          |                    |                      |            |            |              |
| Jerry Balmer      | MA       | Alternate Analyst  | OECM Analyst |                    |                      |            |            |              |

Status Date Dropdown

Initiate/Update a Capital Program

Initiate/Update a Project

Project/CD Overview

Add BCP

Monthly Status Reporting

Update Budget

View KPPs

Update Other Attachments

Add

Remove

---

Date Updated

Updated By



# Project/CD Overview

PARS II

Selected Project Name

**Overview** CD0 CD1 CD2 CD3 CD4 Closeout

Status Date Dropdown

Initiate/Update a Capital Program

Initiate/Update a Project

**Project/CD Overview**

Add BCP

Monthly Status Reporting

Update Budget

View KPPs

Update Other Attachments

Current Project Status

Project Attributes Area

CD0 and CD1 Area

CD2 Area

CD3 Area CD4 Area Closeout Area

PB Version Area

EM-C Area



# Project Overview

| Project Attributes   |                    |              |         |                |                 |                |                |                 |                             |          |                 |           |                    |              |
|----------------------|--------------------|--------------|---------|----------------|-----------------|----------------|----------------|-----------------|-----------------------------|----------|-----------------|-----------|--------------------|--------------|
| Project ID           | DOE Project Number | Project Name | Program | Program Office | Capital Program | Project Type 1 | Project Type 2 | Project On Hold | Project of Special Interest | FPD Name | Contractor Name | Site Code | Program Office POC | OECM Analyst |
| <a href="#">Link</a> |                    |              |         |                |                 |                |                |                 |                             |          |                 |           |                    |              |

| Current Status | Project Activity Status | Current CD | Current BCP | OECM Assessment | OECM Mto/Yr. to Achieve Green | OECM Forecast TPC | OECM Forecast CD4 Date | Percent Complete | TPC | CPI | SPI | CD4 Date | DOE Cost Contingency Remaining | DOE Schedule Contingency Remaining | Contractor MR Remaining | Contractor Profit/Fee Remaining | PMB | Non-Contract Costs | KPPs |                              |
|----------------|-------------------------|------------|-------------|-----------------|-------------------------------|-------------------|------------------------|------------------|-----|-----|-----|----------|--------------------------------|------------------------------------|-------------------------|---------------------------------|-----|--------------------|------|------------------------------|
| Project ID     |                         |            |             |                 |                               |                   |                        |                  |     |     |     |          |                                |                                    |                         |                                 |     |                    |      | <a href="#">Link to KPPs</a> |

|                     | Date (P) | Date (A) | TPC Low | TPC High | CD4 Low | CD4 High |
|---------------------|----------|----------|---------|----------|---------|----------|
| <a href="#">CD0</a> |          |          |         |          |         |          |
| <a href="#">CD1</a> |          |          |         |          |         |          |





# Project Overview, Cont'd.

|                     | Date (P) | Date (A) | TPC Approved | CD4 Approved Date | Original DOE Cost Contingency | Original DOE Schedule Contingency | Original Contractor MR | Original Contractor Profit/Fee | Non-Contractor Costs | PMB |
|---------------------|----------|----------|--------------|-------------------|-------------------------------|-----------------------------------|------------------------|--------------------------------|----------------------|-----|
| <a href="#">CD2</a> |          |          |              |                   |                               |                                   |                        |                                |                      |     |

|                      | Date (P) | Date (A) | Approved Scope | Approved Cost |
|----------------------|----------|----------|----------------|---------------|
| <a href="#">CD3A</a> |          |          |                |               |

|                     | Date (P) | Date (A) |
|---------------------|----------|----------|
| <a href="#">CD3</a> |          |          |

|                     | Date (P) | Date (A) | CD4 TPC |
|---------------------|----------|----------|---------|
| <a href="#">CD4</a> |          |          |         |

|                          | Date (A) | Actual Cost at Financial Closeout |
|--------------------------|----------|-----------------------------------|
| <a href="#">Closeout</a> |          |                                   |



# Project Overview, Cont'd.

| BCPs                  | Approval Date | Directed Change | Revised TPC | Revised CD4 Date | DOE Cost Contingency | DOE Schedule Contingency | Contractor MR | Contractor Profit/Fee | Non-Contractor Costs | PMB |
|-----------------------|---------------|-----------------|-------------|------------------|----------------------|--------------------------|---------------|-----------------------|----------------------|-----|
| <a href="#">BCP01</a> |               |                 |             |                  |                      |                          |               |                       |                      |     |
| <a href="#">BCP02</a> |               |                 |             |                  |                      |                          |               |                       |                      |     |
| <a href="#">BCP03</a> |               |                 |             |                  |                      |                          |               |                       |                      |     |



# Updating CD0

PARS II

Selected Project Name

Overview

CD0

CD1

CD2

CD3A

CD3

CD4

Closeout

---

Status Date Dropdown

Initiate/Update a Capital Program

Initiate/Update a Project

Project/CD Overview

Add BCP

Monthly Status Reporting

Update Budget

View KPPs

Update Other Attachments

85. CD0 Date Approved

92. CD0 Approved By

99. CD0 Approval Notes\*

---

106. CD0: TPC Low

107. CD0: TPC High

108. CD0: CD-4 Date Low

109. CD0: CD-4 Date High

---

79. CD1 Date Planned

80. CD2 Date Planned

81. CD3A Date Planned

82. CD3 Date Planned

83. CD4 Date Planned

---

32. FPD Name

33. FPD Certification Level

---

Update KPPs

Update/View CD0 Attachments

---

Date Updated

Updated By



# Updating CD1

PARS II

Selected Project Name

Overview

CD0

CD1

CD2

CD3A

CD3

CD4

Closeout

|                       |                             |                          |                          |
|-----------------------|-----------------------------|--------------------------|--------------------------|
| 86. CD1 Date Approved | 93. CD1 Approved By         | 100. CD1 Approval Notes* | 79. CD1 Date Planned     |
| 110. CD1: TPC Low     | 111. CD1: TPC High          | 112. CD1: CD-4 Date Low  | 113. CD1: CD-4 Date High |
| 80. CD2 Date Planned  | 81. CD3A Date Planned       | 82. CD3 Date Planned     | 83. CD4 Date Planned     |
| 32. FPD Name          | 33. FPD Certification Level |                          |                          |
| Update KPPs           | Update/View CD1 Attachments |                          |                          |
| Date Updated          | Updated By                  |                          |                          |

Initiate/Update a Capital Program

Initiate/Update a Project

Project/CD Overview

Add BCP

Monthly Status Reporting

Update Budget

View KPPs

Update Other Attachments



# Updating CD2

PARS II

Selected Project Name

Overview
CD0
CD1
CD2
CD3A
CD3
CD4
Closeout

|                                   |                                        |                                     |                                                                                  |                                     |
|-----------------------------------|----------------------------------------|-------------------------------------|----------------------------------------------------------------------------------|-------------------------------------|
| Status Date Dropdown              | 87. CD2 Date Approved                  | 94. CD2 Approved By                 | 101. CD2 Approval Notes*                                                         | 80. CD2 Date Planned                |
| Initiate/Update a Capital Program | 114. CD2: TPC Low                      | 115. CD2:TPC High (Approved)        | 116. CD2: CD-4 Date Low                                                          | 117. CD2: CD-4 Date High (Approved) |
| Initiate/Update a Project         | 120. Unfunded Cost Contingency (Calc.) | 121. Orig. DOE Schedule Contingency | 119. Orig. DOE Cost Contingency                                                  | 124. Non-Contract Costs             |
| Project/CD Overview               | 123. Orig. Contractor Fee/Profit       | 122. Orig. Contractor MR            | 125. PMB*                                                                        |                                     |
| Add BCP                           | 81. CD3A Date Planned                  | 82. CD3 Date Planned                |                                                                                  |                                     |
| Monthly Status Reporting          | Update KPPs                            | Update/View CD2 Attachments         | WARNING!<br>Data elements on screen do not equal listed Performance Baseline TPC |                                     |
| Update Budget                     | Date Updated                           | Updated By                          |                                                                                  |                                     |
| View KPPs                         |                                        |                                     |                                                                                  |                                     |
| Update Other Attachments          |                                        |                                     |                                                                                  |                                     |



# Updating CD3A

**PARS II** Selected Project Name

Overview CD0 CD1 CD2 **CD3A** CD3 CD4 Closeout

|                                   |                              |                                            |                           |                       |
|-----------------------------------|------------------------------|--------------------------------------------|---------------------------|-----------------------|
| Status Date Dropdown              | 88. CD3A Date Approved       | 95. CD3A Approved By                       | 102. CD3A Approval Notes* | 81. CD3A Date Planned |
| Initiate/Update a Capital Program | 126. Approved Scope          | 127. Approved Cost                         |                           |                       |
| Initiate/Update a Project         | 82. CD3 Date Planned         | 117 or 177. Latest Approved CD-4 Date High |                           |                       |
| <b>Project/CD Overview</b>        | Update/View CD3A Attachments |                                            |                           |                       |
| Add BCP                           | Date Updated                 | Updated By                                 |                           |                       |
| Monthly Status Reporting          |                              |                                            |                           |                       |
| Update Budget                     |                              |                                            |                           |                       |
| View KPPs                         |                              |                                            |                           |                       |
| Update Other Attachments          |                              |                                            |                           |                       |



# Updating CD3

**PARS II**

Overview | CD0 | CD1 | CD2 | CD3A | **CD3** | CD4 | Closeout

|                                   |                             |                                      |                                  |                                            |
|-----------------------------------|-----------------------------|--------------------------------------|----------------------------------|--------------------------------------------|
| Status Date Dropdown              | 89. CD3 Date Approved       | 96. CD3 Approved By                  | 103. CD3 Approval Notes*         | 82. CD3 Date Planned                       |
| Initiate/Update a Capital Program | 116 or 176. Latest TPC Low  | 115 or 175. Latest Approved TPC High | 116 or 178. Latest CD-4 Date Low | 117 or 177. Latest Approved CD-4 Date High |
| Initiate/Update a Project         | Update/View CD3 Attachments |                                      |                                  |                                            |
| <b>Project/CD Overview</b>        | Date Updated                | Updated By                           |                                  |                                            |
| Add BCP                           |                             |                                      |                                  |                                            |
| Monthly Status Reporting          |                             |                                      |                                  |                                            |
| Update Budget                     |                             |                                      |                                  |                                            |
| View KPPs                         |                             |                                      |                                  |                                            |
| Update Other Attachments          |                             |                                      |                                  |                                            |



# Updating CD4

**PARS II**

[Overview](#)
[CD0](#)
[CD1](#)
[CD2](#)
[CD3A](#)
[CD3](#)
[CD4](#)
[Closeout](#)

|                                   |                                       |                     |                          |                              |
|-----------------------------------|---------------------------------------|---------------------|--------------------------|------------------------------|
| Status Date Dropdown              | 90. CD4 Date Approved                 | 97. CD4 Approved By | 104. CD4 Approval Notes* | 117 or 177. CD4 Date Planned |
| Initiate/Update a Capital Program | 129. KPP Scope Narrative @ Completion | 128. CD-4 TPC High  |                          |                              |
| Initiate/Update a Project         | Update/View CD4 Attachments           | Update KPPs         |                          |                              |
| <b>Project/CD Overview</b>        | Date Updated                          | Updated By          |                          |                              |
| Add BCP                           |                                       |                     |                          |                              |
| Monthly Status Reporting          |                                       |                     |                          |                              |
| Update Budget                     |                                       |                     |                          |                              |
| View KPPs                         |                                       |                     |                          |                              |
| Update Other Attachments          |                                       |                     |                          |                              |





# Updating Closeout

**PARS II** Selected Project Name

Overview CD0 CD1 CD2 CD3A CD3 CD4 **Closeout**

|                                   |                                       |                          |                               |
|-----------------------------------|---------------------------------------|--------------------------|-------------------------------|
| Status Date Dropdown              | 91. Closeout Date Approved            | 98. Closeout Approved By | 105. Closeout Approval Notes* |
| Initiate/Update a Capital Program | 130. Actual Cost @ Financial Closeout |                          |                               |
| Initiate/Update a Project         | Update/View Closeout Attachments      |                          |                               |
| <b>Project/CD Overview</b>        | Date Updated                          | Updated By               |                               |
| Add BCP                           |                                       |                          |                               |
| Monthly Status Reporting          |                                       |                          |                               |
| Update Budget                     |                                       |                          |                               |
| View KPPs                         |                                       |                          |                               |
| Update Other Attachments          |                                       |                          |                               |



# Add BCP

PARS II

Selected Project Name

BCP 01

BCP 02

BCP 03

BCP 04

NEW

|                                        |                                    |                                  |                                      |
|----------------------------------------|------------------------------------|----------------------------------|--------------------------------------|
|                                        | 165. BCP Number                    | 166. BCP Title                   | 170. BCP Change Directed (yes/no)    |
| 169. BCP Request Submission Date*      | 167. BCP Date Approved             | 168. BCP Approved By             | 174. BCP Approval Notes              |
| 176. BCP: TPC Low                      | 175. BCP: TPC High (Approved)      | 178. BCP: CD-4 Date Low          | 177. BCP: CD-4 Date High (Approved)  |
| 182. Unfunded Cost Contingency (Calc.) | 180. BCP: DOE Schedule Contingency | 181. BCP: DOE Cost Contingency   | 185. BCP: Non-Contract Costs         |
| 184. BCP: Contractor Fee/Profit        | 183. BCP: Contractor MR            | 125. PMB*                        |                                      |
| 81. CD3A Date Planned                  | 82. CD3 Date Planned               | 171. BCP: Change in Cost (Calc.) | 172. BCP: Change in Schedule (Calc.) |

Edit BCP KPPs

**WARNING!**  
 Data elements on screen do not equal listed Performance Baseline TPC

Date Updated

Updated By



# Monthly Status - FPD

**PARS II**

Selected Project Name

**FPD Monthly**

Program Monthly

OECM Monthly

|                                                                                                                                                                                                                                                                                                                                                                                                                                                                                                                                                                                                                                                                                                                                                                                                                                                                                                                                                                                                                                                                                                                                                                                                                            |                                                                                                                                                                                                                                                                                                                                                                                                                                                                                                                                                                                                                                                                                            |                                                                                                                                                                                                                                                                                                                                                                                                                                                                                                                                                                                                                                                                                                      |                                                                                                                                                                                                                                                                                                                                            |                                                                                                                                                                                                                                                            |
|----------------------------------------------------------------------------------------------------------------------------------------------------------------------------------------------------------------------------------------------------------------------------------------------------------------------------------------------------------------------------------------------------------------------------------------------------------------------------------------------------------------------------------------------------------------------------------------------------------------------------------------------------------------------------------------------------------------------------------------------------------------------------------------------------------------------------------------------------------------------------------------------------------------------------------------------------------------------------------------------------------------------------------------------------------------------------------------------------------------------------------------------------------------------------------------------------------------------------|--------------------------------------------------------------------------------------------------------------------------------------------------------------------------------------------------------------------------------------------------------------------------------------------------------------------------------------------------------------------------------------------------------------------------------------------------------------------------------------------------------------------------------------------------------------------------------------------------------------------------------------------------------------------------------------------|------------------------------------------------------------------------------------------------------------------------------------------------------------------------------------------------------------------------------------------------------------------------------------------------------------------------------------------------------------------------------------------------------------------------------------------------------------------------------------------------------------------------------------------------------------------------------------------------------------------------------------------------------------------------------------------------------|--------------------------------------------------------------------------------------------------------------------------------------------------------------------------------------------------------------------------------------------------------------------------------------------------------------------------------------------|------------------------------------------------------------------------------------------------------------------------------------------------------------------------------------------------------------------------------------------------------------|
| <div style="border: 1px solid gray; padding: 5px; margin-bottom: 5px;">Status Date Dropdown</div> <div style="background-color: #003366; color: white; padding: 5px; margin-bottom: 5px; border-radius: 5px;">Initiate/Update a Capital Program</div> <div style="background-color: #003366; color: white; padding: 5px; margin-bottom: 5px; border-radius: 5px;">Initiate/Update a Project</div> <div style="background-color: #003366; color: white; padding: 5px; margin-bottom: 5px; border-radius: 5px;">Project/CD Overview</div> <div style="background-color: #003366; color: white; padding: 5px; margin-bottom: 5px; border-radius: 5px;">Add BCP</div> <div style="background-color: #003366; color: white; padding: 5px; margin-bottom: 5px; border-radius: 5px;"><b>Monthly Status Reporting</b></div> <div style="background-color: #003366; color: white; padding: 5px; margin-bottom: 5px; border-radius: 5px;">Update Budget</div> <div style="background-color: #003366; color: white; padding: 5px; margin-bottom: 5px; border-radius: 5px;">View KPPs</div> <div style="background-color: #003366; color: white; padding: 5px; margin-bottom: 5px; border-radius: 5px;">Update Other Attachments</div> | <div style="border: 1px solid gray; padding: 5px; margin-bottom: 5px;">147. FPD Forecast for TPC</div> <div style="border: 1px solid gray; padding: 5px; margin-bottom: 5px;">140. FPD Status Assessment Narrative</div> <div style="border: 1px solid gray; padding: 5px; margin-bottom: 5px;">145. FPD Mo./Yr. to Achieve Green*</div> <div style="border: 1px solid gray; padding: 5px; margin-bottom: 5px;">131. Cost Contingency Used (Entered)</div> <div style="border: 1px solid gray; padding: 5px; margin-bottom: 5px;">133. Sched. Contingency Used (Entered)</div> <div style="border: 1px solid gray; padding: 5px; margin-bottom: 5px;">135. Profit/Fee Used (Entered)</div> | <div style="border: 1px solid gray; padding: 5px; margin-bottom: 5px;">146. FPD Forecast Completion Date</div> <div style="border: 1px solid gray; padding: 5px; margin-bottom: 5px;">141. FPD RYG Assessment</div> <div style="border: 1px solid gray; padding: 5px; margin-bottom: 5px;">142. FPD Corrective Action Plan – Narr.*</div> <div style="border: 1px solid gray; padding: 5px; margin-bottom: 5px;">132. Cost Contingency Remaining (Calc.)</div> <div style="border: 1px solid gray; padding: 5px; margin-bottom: 5px;">134. Sched. Contingency Remaining (Calc.)</div> <div style="border: 1px solid gray; padding: 5px; margin-bottom: 5px;">136. Profit/Fee Remaining (Calc.)</div> | <div style="border: 1px solid gray; padding: 5px; margin-bottom: 5px;">195. FPD Has Reviewed CPP (Yes/No)</div> <div style="border: 1px solid gray; padding: 5px; margin-bottom: 5px;">157. Current OECM RYG Assessment</div> <div style="border: 1px solid gray; padding: 5px; margin-bottom: 5px;">149. Current PO RYG Assessment*</div> | <div style="border: 1px solid gray; padding: 5px; margin-bottom: 5px;">195a. Monthly OA Current (Yes/No)</div> <div style="background-color: #ADD8E6; padding: 5px; margin-bottom: 5px; border-radius: 5px; text-align: center;">Go to CPP Dashboard</div> |
|                                                                                                                                                                                                                                                                                                                                                                                                                                                                                                                                                                                                                                                                                                                                                                                                                                                                                                                                                                                                                                                                                                                                                                                                                            | <div style="border: 1px solid gray; padding: 5px; margin-bottom: 5px; background-color: #cccccc;">Date Updated</div>                                                                                                                                                                                                                                                                                                                                                                                                                                                                                                                                                                       | <div style="border: 1px solid gray; padding: 5px; margin-bottom: 5px; background-color: #cccccc;">Updated By</div>                                                                                                                                                                                                                                                                                                                                                                                                                                                                                                                                                                                   | <div style="border: 1px solid gray; padding: 5px; margin-bottom: 5px; background-color: #ADD8E6; border-radius: 5px;">Add FPD Attachments</div>                                                                                                                                                                                            |                                                                                                                                                                                                                                                            |



# Monthly Status - Program

**PARS II** Selected Project Name

[FPD Monthly](#)
[Program Monthly](#)
[OECM Monthly](#)

|                                   |                            |                                            |                                      |                                   |
|-----------------------------------|----------------------------|--------------------------------------------|--------------------------------------|-----------------------------------|
| Status Date Dropdown              | 149. PO RYG Assessment*    | 153. Program Mo./Yr. to Achieve Green*     | 141. Current FPD RYG Assessment      | 157. Current OECM RYG Assessment  |
| Initiate/Update a Capital Program | 154. Program Forecast TPC* | 155. Program Forecast CD4 Completion Date* | 152. PO Status Assessment Narrative* | 195a. Monthly OA Current (Yes/No) |
| Initiate/Update a Project         | Date Updated               | Updated By                                 | Add Program Attachments              | Go to CPP Dashboard               |
| Project/CD Overview               |                            |                                            |                                      |                                   |
| Add BCP                           |                            |                                            |                                      |                                   |
| Monthly Status Reporting          |                            |                                            |                                      |                                   |
| Update Budget                     |                            |                                            |                                      |                                   |
| View KPPs                         |                            |                                            |                                      |                                   |
| Update Other Attachments          |                            |                                            |                                      |                                   |



# Monthly Status - OECM

**PARS II** Selected Project Name

[FPD Monthly](#)
[Program Monthly](#)
[OECM Monthly](#)

|                                   |                                   |                                        |                                        |                                 |
|-----------------------------------|-----------------------------------|----------------------------------------|----------------------------------------|---------------------------------|
| Status Date Dropdown              | 157. OECM RYG Assessment          | 161. OECM Mo./Yr. to Achieve Green*    | 141. Current FPD RYG Assessment        | 149. Current PO RYG Assessment* |
| Initiate/Update a Capital Program | 162. OECM Forecast TPC            | 163. OECM Forecast CD4 Completion Date | 160. OECM Overall Assessment Narrative | Go to CPP Dashboard             |
| Initiate/Update a Project         | 164. Analyst's Detailed Comments* |                                        |                                        |                                 |
| Project/CD Overview               | Date Updated                      | Updated By                             | Add OECM Attachments                   |                                 |
| Add BCP                           |                                   |                                        |                                        |                                 |
| Monthly Status Reporting          |                                   |                                        |                                        |                                 |
| Update Budget                     |                                   |                                        |                                        |                                 |
| View KPPs                         |                                   |                                        |                                        |                                 |
| Update Other Attachments          |                                   |                                        |                                        |                                 |



# Budget/Funding

PARS II

Selected Project Name

Status Date  
Dropdown

Initiate/Update a  
Capital Program

Initiate/Update a  
Project

Project/CD  
Overview

Add BCP

Monthly Status  
Reporting

Update Budget

View KPPs

Update Other  
Attachments

Funding Profile Type Dropdown    FY/BY Dropdown    Start Year    End Year    Exception Request Needed (Yes/No)

| Description             | FY x   | FY X+1 | FY X+2 | FY X+3 | FY X+... | FY X+n | TOTAL  |
|-------------------------|--------|--------|--------|--------|----------|--------|--------|
| 189. TEC Design         | 4,600  |        |        |        |          |        | 4,600  |
| 190. TEC Construction   | 59,800 |        |        |        |          |        | 59,800 |
| TOTAL TEC               | 64,400 | -      | -      | -      | -        | -      | 64,400 |
| 191.OPC (Excluding D&D) | 12,000 |        |        |        |          |        | 12,000 |
| 192. OPC (D&D)          | 10,000 |        |        |        |          |        | 10,000 |
| TOTAL OPC               | 22,000 | -      | -      | -      | -        | -      | 22,000 |
| 193. Undistributed      |        |        |        |        |          |        |        |
| TOTAL Request           | 86,400 | -      | -      | -      | -        | -      | 86,400 |
| Latest CD2 or BCP       | -      | -      | -      | -      | -        | -      | -      |
| Difference              | -      | -      | -      | -      | -        | -      | -      |

Save

Lock

193a. Notes Field



# Editing KPPs

PARS II

Selected Project Name

Status Date  
Dropdown

Initiate/Update a  
Capital Program

Initiate/Update a  
Project

Project/CD  
Overview

Add BCP

Monthly Status  
Reporting

Update Budget

View KPPs

Update Other  
Attachments

## KPPs

| 19. KPP# | 19A. Event | 20. KPP Planned Scope | 21. KPP Delivered Scope* | 22. KPP Validated Yes/No* | 23. KPP Date Updated | 24. KPP Updated By |
|----------|------------|-----------------------|--------------------------|---------------------------|----------------------|--------------------|
|          |            |                       |                          |                           |                      |                    |
|          |            |                       |                          |                           |                      |                    |
|          |            |                       |                          |                           |                      |                    |

View Previous  
Screen



# Attachments

| 25A. CD Event (Dropdown)               | 25. Document Name (Dropdown)                       | 25B. Document Number* | 25C. Document Version* | 26. Attachment Filename       | 26A. Date Uploaded | 26B. Uploaded By | 26C. Description*                                |
|----------------------------------------|----------------------------------------------------|-----------------------|------------------------|-------------------------------|--------------------|------------------|--------------------------------------------------|
| CD0                                    | Mission Need Statement                             | 1                     | Original               | SEBP Mission Need.doc         | 5/6/2010           | John Doe         | The Mission Need statement for the SEBP project. |
| CD1                                    | Acquisition Strategy                               | 7                     | Revised                | SEBP Acquisition Strategy.doc | 6/30/2010          | Mike Jacobs      | This is the approved acquisition strategy.       |
| Dropdown of CD Events (Includes OTHER) | Dropdown of Mandatory Attachments (Includes OTHER) |                       |                        | <Empty>                       | <Empty>            | <Empty>          | <Empty>                                          |

Add Attachments

View Previous Screen





# Contacts Screen (System Administration)

PARS II

Contacts

Administration

Add Contact

Delete

Save

Find

---

|                 |                 |                 |                  |                                 |             |
|-----------------|-----------------|-----------------|------------------|---------------------------------|-------------|
| 225. Contact ID | 226. Salutation | 227. First Name | 228. Middle Name | 229. Last Name                  | 231. Suffix |
| #. Contact Code | #. Nickname     | 219. Job Title  | #. Assigned to   | Certifications for This Contact |             |

---

|                     |                   |          |
|---------------------|-------------------|----------|
| 260. Company        | 233. Program Code |          |
| #. Department       | 234. Site Code    |          |
| 235. Address Line 1 | 249. Group ID     |          |
| 236. Address Line 2 |                   |          |
| 237. City           | 238. State        | 239. Zip |

---

|             |              |             |              |
|-------------|--------------|-------------|--------------|
| 240. Phone  | #. Extension | 231a. Notes | Date Updated |
| 241. Mobile | 243. Email 1 |             | Updated By   |
| 242. Fax    | 244. Email 2 |             |              |



# Certification Screen (System Administration)

PARS II

**Contacts**

**Administration**

|                 |                 |                 |                  |                   |                               |
|-----------------|-----------------|-----------------|------------------|-------------------|-------------------------------|
| 225. Contact ID | 226. Salutation | 227. First Name | 228. Middle Name | 229. Last Name    | 230. Suffix                   |
| #. Contact Code | #. Nickname     | 219. Job Title  | #. Assigned to   | 250. Company Name | <b>Back to Contact Record</b> |

|                           |                               |                              |
|---------------------------|-------------------------------|------------------------------|
| 43a. Certification Type 1 | 29or33or37or41. Cert. 1 Level | 30or34or38or42. Cert. 1 Date |
| 43a. Certification Type 2 | 29or33or37or41. Cert. 2 Level | 30or34or38or42. Cert. 2 Date |
| 43a. Certification Type 3 | 29or33or37or41. Cert. 3 Level | 30or34or38or42. Cert. 3 Date |
| 43a. Certification Type 4 | 29or33or37or41. Cert. 4 Level | 30or34or38or42. Cert. 4 Date |

**Add New Certification**   **Delete**   **Save**

43b. Notes

Date Updated

Updated By