

EM Site-Specific Advisory Board

Top 3 Issues, Accomplishments, and Board Activities

EM SSAB Chairs Meeting

September 15-16, 2010 • Santa Fe, New Mexico



EM *Environmental Management*

safety ❖ performance ❖ cleanup ❖ closure

www.em.doe.gov

Oak Ridge



1. Budget

- Concern that future Oak Ridge budgets will be inadequate to accomplish cleanup commitments/goals in a timely manner.
- The Oak Ridge EM funding has declined in recent years while scope has increased. This has led to regulatory disputes over milestones.

	National DOE-EM Budget	DOE-Oak Ridge EM Funding	Proposed DOE EM Budget for Oak Ridge	Difference from 2008
FY 2008	\$5.78 B	\$493 M		
FY 2009	\$6.016 B	\$499 M		+ \$6 M
FY 2010	\$6.047 B	\$436 M		- \$57 M
FY 2011	\$6.05 B		\$450 M	- \$43 M



Oak Ridge



1. Budget (continued)

- Concern that there will be inadequate funding for the deteriorating facilities that need to be removed to enhance remediation at Oak Ridge National Laboratory and the Y-12 National Security Complex.



EM Environmental Management

safety ❖ performance ❖ cleanup ❖ closure

www.em.doe.gov

Oak Ridge



2. Environmental Media Risk

- Mercury at Y-12 and in Lower East Fork Poplar Creek

Thousands of pounds of mercury were released to Upper East Fork Poplar Creek from 1950 to 1982 during production of materials used in nuclear weapons.



Mercury is being removed from Y-12 as part of the West End Mercury Area Storm Sewer Remediation Project, which is funded by ARRA.



EM Environmental Management

safety ❖ performance ❖ cleanup ❖ closure

www.em.doe.gov

Oak Ridge



2. Environmental Media Risk (continued)

- Possible migration of contaminants offsite in Melton Valley Groundwater



To determine if contamination is migrating offsite from Melton Valley, a line of monitoring wells is being placed on private property west of the Oak Ridge Reservation.



EM Environmental Management

safety ❖ performance ❖ cleanup ❖ closure

www.em.doe.gov

Oak Ridge

2. Environmental Media Risk (continued)

- Air emission potential from Oak Ridge National Lab central stack



EM Environmental Management

safety ❖ performance ❖ cleanup ❖ closure

www.em.doe.gov

Oak Ridge



2. Environmental Media Risk (continued)

- Buried uranium in Bear Creek Burial Grounds



Aerial view of Bear Creek Burial Grounds



A concrete blanket covers the burial grounds to mitigate risk posed by shock-sensitive materials that are buried there.



EM Environmental Management

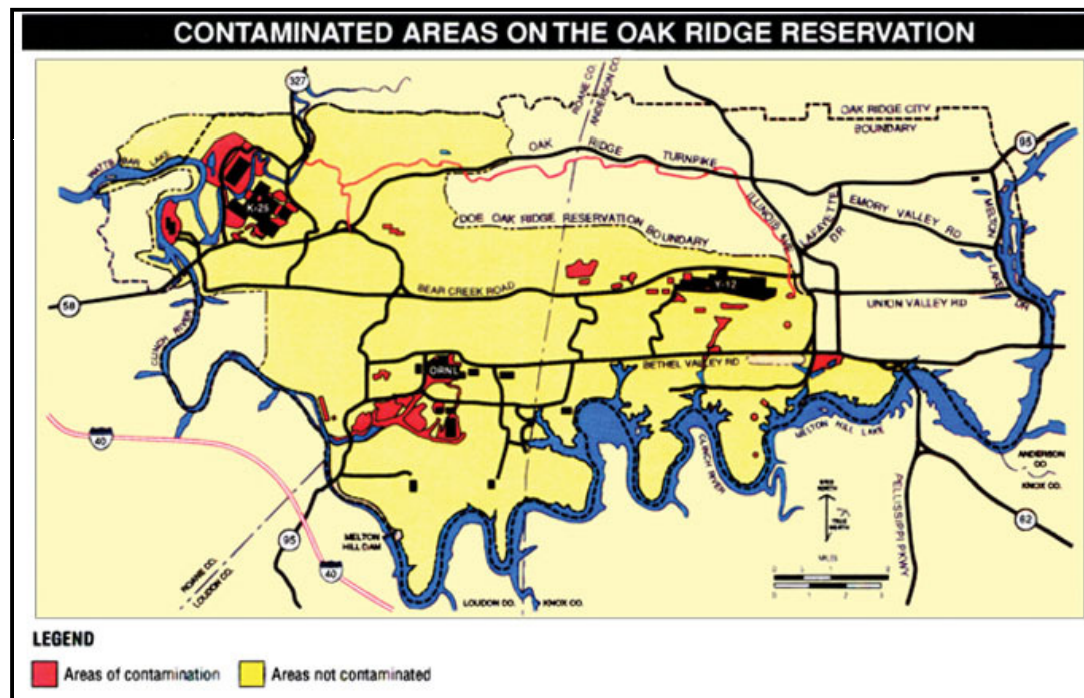
safety ❖ performance ❖ cleanup ❖ closure

www.em.doe.gov

Oak Ridge



3. Long-Term Stewardship at Ongoing Mission Sites
 - Contaminated areas will require long-term stewardship with active involvement of DOE and oversight stewards.



EM Environmental Management

safety ❖ performance ❖ cleanup ❖ closure

www.em.doe.gov

Oak Ridge



3. Long-Term Stewardship at Ongoing Mission Sites (continued)

- DOE-HQ has no long-term strategic plan or guidance for stewardship at ongoing mission sites.
- There is no future landlord participation in long-term stewardship planning.



Oak Ridge



Accomplishment:

- Planned and executed the Spring 2010 Chairs' Meeting.
- Redesigned and completed the new ORSSAB exhibit at the American Museum of Science and Energy.



EM Environmental Management

safety ❖ performance ❖ cleanup ❖ closure

www.em.doe.gov

Oak Ridge



Major Board Activity: Planned and executed the ORSSAB annual planning retreat.



EM Environmental Management

safety ❖ performance ❖ cleanup ❖ closure

www.em.doe.gov



Savannah River Site

1. Resolve the major legacy of nuclear weapons production at SRS by treating and disposing of liquid waste and closing tanks
 - Risk Reduction: Highest risk in state of South Carolina
 - Safely treat and disposition 37 million gallons of radioactive liquid waste and close 49 additional underground storage tanks
 - Execution of the Liquid Waste System Plan (Rev. 15) is underway to accelerate tank closures; utilizes key technology deployments
 - Plan is to close 22 tanks in 8 years (FY 2018). Rev.14 (FY 2022)
 - Increase DWPF processing rate from 325 to 400 canisters/year in 2012
 - Double Actinide Removal Process and Modular Caustic-Side Extraction Unit throughput
 - Salt solution processed will be significantly increased. Salt Waste Processing Facility (SWPF) is scheduled to be operational by May 2013.





Savannah River Site

2. Consolidation and Disposition of Plutonium

- Discussion of plutonium storage and disposition plans at the SRS date back to the mid-1990's.
- In December 2003, the DNFSB urged DOE to “expedite the development of a complete, well-considered plan for the disposition of all excess plutonium to preclude unnecessary extended storage of plutonium at SRS.”
- DOE needs to finalize plans for disposition to preclude unnecessary extended storage of plutonium at the SRS as promised to the state of South Carolina.
- Surplus Pu Disposition SEIS Public Scoping Meeting was held 8/17/10
 - Disposition options for additional 7 MT of pit Pu and 6 MT of non-pit Pu
 - Vitrification is included in several options at SRS
 - Completion of ROD is key in finalizing Pu disposition plans at SRS





Savannah River Site

3. Lack of a Federal Repository for Nuclear Waste Disposition and Storage

- The waste content of the SRS DWPF canisters has been formulated based on the waste acceptance criteria for the Yucca Mountain Federal Repository.
- The communities surrounding SRS are beginning to believe that SRS will be a de facto long-term waste storage site if a federal repository for nuclear waste does not become operational.
- The state of South Carolina has been promised by DOE that the state will not be used for long-term storage of plutonium or High Level Waste.
- Credibility and costs are at issue. To study another waste federal repository to the same degree as Yucca Mountain would take decades to complete. Continuing to store waste at multiple sites around the country could be a safety/security concern.
- Citizens have not been provided the technical or scientific basis for cancellation of the Yucca Mountain Federal Repository.





Savannah River Site

Accomplishment: The SRS CAB advised DOE (Recommendation #268) to continue the SRS Superfund Job Training Initiative (SJTI) and supported the original program presented by EPA

- The objectives of the SRS SJTI is to support underserved, under-employed, and unemployed individuals by providing training for marketable trade, professional and interpersonal life skills, and entry-level environmental remediation or SRS related job opportunities.
- Program supported by EPA HQ and implemented by EPA Region 4. SRS is the first federal facility to endorse a worker-ready program.
- The first cycle of the SJTI resulted in the employment of 16 individuals in August 2009.
- The second cycle of the SJTI began in March 2010. Out of 321 candidates 42 candidates were selected for technical training.
- Eleven fast track technical trainees started work at SRS as RADCon inspectors in June 2010. Twenty eight additional candidates started their careers at SRS in July 2010.



EM Environmental Management

safety ❖ performance ❖ cleanup ❖ closure

www.em.doe.gov



Savannah River Site

Major Board Activities:

- Improvement and increased participation in the Video Conferences for committee meetings
 - http://www.srs.gov/general/outreach/srs-cab/meeting_schedules.html
 - click “join the Live E-Meeting”
- Participated in a number of public meetings
 - Public Educational Forum on Performance Assessments hosted by DOE, SRNL, SRR with input from EPA & NRC, May 18
 - GAO meeting with invited CAB members regarding Yucca Mountain, June 24
 - DOE hosted a meeting with NRC on the development of Section 3116 Draft Basis Document for F Tank Farm, July 13 and 14
 - Supplemental Environmental Impact Statement on “Surplus Pu Disposition”, August 17



Hanford

1. Groundwater/Vadose Zone

- Vadose zone characterization and potential remediation (VZ workshop held in Richland in July)
- Moratorium on offsite waste disposal at Hanford (until WTP is operational)
- More characterization needed in waste burial grounds to support remedy selections
- Draft TC&WM EIS identified unacceptable impacts to groundwater



Hanford

2. RCRA Site-Wide Permit

- WA State permit required for site operations
- 10 -Year permit
- Complicated, huge document to review
 - Draft for review expected October/November timeframe
 - Planned public comment period 60-90 days (HAB will probably ask for extension)
- Includes the WTP
 - WTP permitting is ongoing as plant is constructed



Hanford

3. Post-ARRA Cleanup Budget

- Potential baseline funding reduction in 2012 and beyond
- Don't want to lose cleanup momentum
- Shovel-ready projects still available
- Potential loss of trained workforce
- Economic impacts



Hanford

Accomplishment: HAB Leadership Outreach

- Met with Mr. Poneman, Dr. Triay, Blue Ribbon Commission, EMAB Tank Waste Subcommittee, and DOE field office managers to share HAB/public values.

Major Board Activity: Increased Public Involvement Committee Activity

- Public Involvement subcommittee ongoing dialogue with Public Information Officers from the Tri-Party Agencies on the Public Involvement Strategic Plan, Community Relations Plan in the Tri-Party Agreement, and public meetings and workshops.



Idaho



INL Site Environmental Management
CITIZENS ADVISORY BOARD

1. Budget / Funding

- Full Base Program funding in light of ARRA Completion
- ARRA Funding extended until 2015



EM Environmental Management

safety ❖ performance ❖ cleanup ❖ closure

www.em.doe.gov

Idaho



INL Site Environmental Management
CITIZENS ADVISORY BOARD

2. High-level Waste Repository / Stakeholder Involvement

- Calcine and Sodium Bearing Waste Final Disposition
 - Idaho Settlement Agreement
- Spent Nuclear Fuel
- Other Treatment Processes Comparable to Vitrification



EM Environmental Management

safety ❖ performance ❖ cleanup ❖ closure

www.em.doe.gov

Idaho



INL Site Environmental Management
CITIZENS ADVISORY BOARD

3. Funding Long-term Liability / Unfunded Liability
 - Long-term Monitoring and Surveillance
 - Ensure Funding for Liability Transfers



EM Environmental Management

safety ❖ performance ❖ cleanup ❖ closure

www.em.doe.gov

Idaho



INL Site Environmental Management
CITIZENS ADVISORY BOARD

Accomplishment:

- Recommendation # 145: Engineering Evaluation/ Cost Analysis for Experiment Breeder Reactor (EBR) II D&D
- Recommendation #146: Workplan for Fiscal Years 2011 and 2012
- Recommendation #147: Multipurpose Haul Road Environmental Assessment



EM Environmental Management

safety ❖ performance ❖ cleanup ❖ closure

www.em.doe.gov

Idaho



INL Site Environmental Management
CITIZENS ADVISORY BOARD

Major Board Activity:

- Blue Ribbon Commission Presentation: R.D. Maynard and Willie Preacher
- New Member Orientation



EM Environmental Management

safety ❖ performance ❖ cleanup ❖ closure

www.em.doe.gov

Nevada

1. Continued characterization of groundwater contamination at Pahute Mesa and public water supplies for Beatty and the Amargosa and Oasis Valleys



EM Environmental Management

safety ❖ performance ❖ cleanup ❖ closure

www.em.doe.gov

Nevada



2. Mixed Waste Disposal Unit (MWDU)/ Mixed Waste Storage Unit (MWSU)

- Construction began on new MWDU in July.
- MWSU application submitted to State of Nevada.
- NTS CAB provided a recommendation in September 2010.



EM Environmental Management

safety ❖ performance ❖ cleanup ❖ closure

www.em.doe.gov

Nevada



3. Membership/Retention

- Long distance (65 miles) and the fact that Nevada Test Site (NTS) activities have no direct impact on Las Vegas residents results in lack of interest.
- Rural communities closer to the NTS are sparsely populated and length of recruitment process can be discouraging.
- There is more public interest in National Nuclear Security Administration activities than Environmental Management activities.



EM Environmental Management

safety ❖ performance ❖ cleanup ❖ closure

www.em.doe.gov

Nevada



Accomplishment: New CAB display was well received at rural outreach event.

Community Advisory Board
for the Nevada Test Site

a group of southern Nevada volunteers providing recommendations to the Department of Energy on clean up activities at the Nevada Test Site

- All meetings are open to the public
- Full Board meetings: Typically held the evening of the second Wednesday of odd-numbered months (usually in Las Vegas, but occasionally throughout southern Nevada)

- Attend Full Board meetings
- Actively participate in a committee
- Review materials with timely response
- Commit 10-20 hours per month
- No technical experience is required

Committee Issues

The CAB includes a variety of committees focusing on specific clean up activities at the Nevada Test Site. Public participation on committees does not require CAB membership. Committees typically meet every other month.

Budget
...reviews and prioritizes funding for clean up projects

Groundwater (UGTA)
...Issues related to groundwater contamination, characterization, drilling and modeling

Industrial Sites
...Issues related to decontaminating and disposing of obsolete buildings and facilities

Membership
...recruits new members

Outreach
...increases public awareness of the Community Advisory Board

Soils
...issues related to clean-up standards used to remediate surface soil contaminated by historic nuclear testing

Transportation/Waste
...Issues related to transportation of hazardous and radioactive waste and waste disposal activities

Phone: 702-657-9038

Website: www.nv.doe.gov/NIS/CAB

Email: NTSCAB@nv.doe.gov



EM Environmental Management

safety ❖ performance ❖ cleanup ❖ closure

www.em.doe.gov

Nevada



Major Board Activity: NTS CAB is considering restructuring the Board with reduction/elimination of committees to address attendance issues, improve educational opportunities, and decrease costs.



EM Environmental Management

safety ❖ performance ❖ cleanup ❖ closure

www.em.doe.gov

Northern New Mexico



1. DOE provide full baseline funding (Base Program) in Fiscal Year 2012 and beyond for Los Alamos National Security (LANS) to meet the schedule for completion in the New Mexico Order on Consent.



EM Environmental Management

safety ❖ performance ❖ cleanup ❖ closure

www.em.doe.gov

Northern New Mexico



2. DOE focus on continued development of an integrated site-wide Surface Water and Groundwater Monitoring Program which incorporates best management practices for new wells.



EM Environmental Management

safety ❖ performance ❖ cleanup ❖ closure

www.em.doe.gov

Northern New Mexico



- 3a. DOE complete remediation of Material Disposal Area B (MDA-B) and continue remediation work on the rest of TA-21 (both with ARRA funding help).

- 3b. DOE remove Transuranic Waste from MDA-G and continue remediation.



Northern New Mexico



Accomplishment: The NNMCAB has actively participated in safeguarding the water supply in Los Alamos and communities reliant on the Rio Grande Basin.



EM Environmental Management

safety ❖ performance ❖ cleanup ❖ closure

www.em.doe.gov

Northern New Mexico



Major Board Activity:

- The NNMCAB continues outreach to the local communities and the Eight Northern Indian Pueblos, one of which shares a boundary with Los Alamos National Laboratory.
- NNMCAB membership grows and diversifies.



EM Environmental Management

safety ❖ performance ❖ cleanup ❖ closure

www.em.doe.gov

Paducah



1. How will levelized funding affect the momentum gained on cleanup activities in the last two years?
 - Will levelized funding lead to workforce reductions of trained, talented people?
 - Will levelized funding affect base operations and enforceable milestones that are already in place?
 - What affects will all these decisions have on worker safety and health?



Paducah



2. How can we capture and preserve the cultural and historical significance of the site?
 - Community awareness of cultural and historical significance of the site is increasing.
 - How can the CAB assist DOE in filling information gaps that result from this increasing awareness?
 - How can DOE leverage this process into building community consensus to define the historic legacy of the site?



Paducah



3. How does DOE ramp up the community engagement process with major decisions pending in 2011?
 - CERCLA Cell - Yes or No?
 - If yes on the CERCLA Cell, where to locate it?
 - Burial grounds - how do you sort and present the issues to achieve public acceptance?



Paducah



Accomplishment: With the approval of the membership packet currently under review, Paducah CAB will be fully staffed at 18 members with still more community members submitting applications and showing interest in serving.



EM Environmental Management

safety ❖ performance ❖ cleanup ❖ closure

www.em.doe.gov

Paducah



Major Board Activity: Paducah CAB co-sponsored an “Eco-Fair” with the Department of Energy May 11-12, 2010, that drew over 500 area sixth-graders from 4 middle schools to the West Kentucky Wildlife Management Area. The students enjoyed environment-related demonstrations presented by Murray State University, Paducah Power System, Kentucky Fish and Wildlife, Paducah Remediation Services, the U.S. Coast Guard, and Greater Paducah Sustainability.

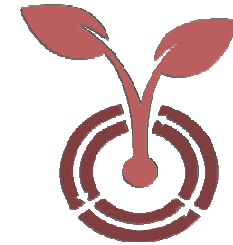


EM Environmental Management

safety ❖ performance ❖ cleanup ❖ closure

www.em.doe.gov

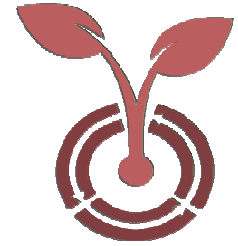
Portsmouth



1. Ensuring that the new D&D/Cleanup contractor adheres to its commitments for job creation in the local area, workers engaged with ARRA are given an opportunity to stay-on, provide opportunities for small business, especially local, and ensure cleanup at the Portsmouth site is accomplished in an accelerated manner.



Portsmouth



2. DOE's stance on recycling, to include asset metals reclamation, and how waste minimization can be integrated into a path forward on waste disposition.



Portsmouth



3. Understanding/ defining EM's role in the Energy Parks Initiative.

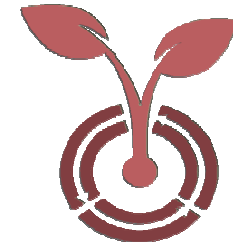


EM Environmental Management

safety ❖ performance ❖ cleanup ❖ closure

www.em.doe.gov

Portsmouth



Accomplishment: An educational series has been conducted to the Future Land Use Subcommittee on planning and conceptualization that will help the Subcommittee better understand the landscape, use mapping and use planning when deciding the future use of the Portsmouth Site.

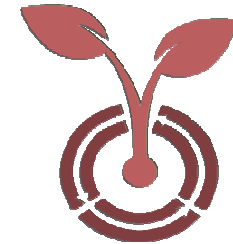


EM Environmental Management

safety ❖ performance ❖ cleanup ❖ closure

www.em.doe.gov

Portsmouth



Major Board Activity: Visiting the Mound Facility and interacting with the political leaders helped educate the Board in understanding the goal that needs to be reached during cleanup.



EM Environmental Management

safety ❖ performance ❖ cleanup ❖ closure

www.em.doe.gov