

EM Site-Specific Advisory Board Top 3 Issues, Accomplishments, and Board Activities

EM SSAB Chairs Meeting

April 28-29, 2010 • Oak Ridge, Tennessee



EM *Environmental Management*

safety ❖ performance ❖ cleanup ❖ closure

www.em.doe.gov

Hanford

1. Central Plateau Completion Strategy and 2015 Vision
 - Number of Records of Decision
 - Many changes to the Tri-Party Agreement to review and potentially provide advice
 - More characterization needed to support remedy selections



EM Environmental Management

safety ❖ performance ❖ cleanup ❖ closure

www.em.doe.gov

Hanford

2. Tank Closure & Waste Management Environmental Impact Statement (EIS)

- The HAB and others submitted substantial comment
- The HAB asked that following the comment resolution for the current draft, the EIS be issued for another public review prior to finalization



EM Environmental Management

safety ❖ performance ❖ cleanup ❖ closure

www.em.doe.gov

Hanford

3. Concerns about the Beryllium Program at Hanford
 - Advices and letters sent to DOE
 - Headquarters responded by initiating an HSS independent review of the Be program and included stakeholders in interim debriefings



EM Environmental Management

safety ❖ performance ❖ cleanup ❖ closure

www.em.doe.gov

Hanford

- Accomplishment: Reaching consensus on advice regarding the Tank Closure & Waste Management EIS using a special one day board meeting
- Major Board Activity: Participating in a public workshop designed to help the public understand the Tank Closure & Waste Management EIS and a follow-up HAB COTW, open to the public, to identify values for advice



EM Environmental Management

safety ❖ performance ❖ cleanup ❖ closure

www.em.doe.gov

Idaho National Laboratory



1. Budget/Funding to Reach Regulatory Milestones
2. High-Level Waste/Repository Stakeholder Involvement
3. Funding for Long-Term Liability/Unfunded Liability



EM Environmental Management

safety ❖ performance ❖ cleanup ❖ closure

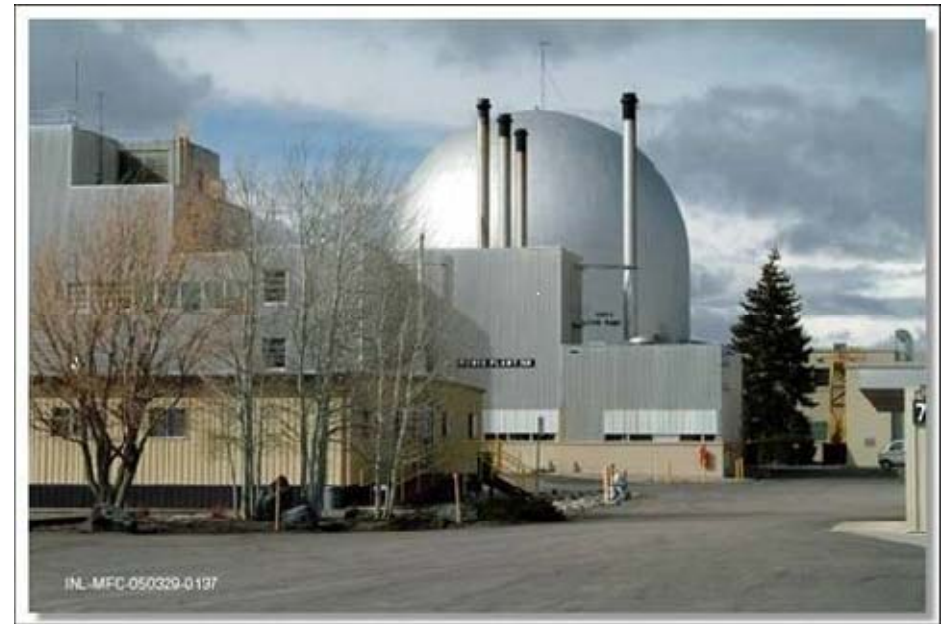
www.em.doe.gov

Idaho National Laboratory



INL Site Environmental Management
CITIZENS ADVISORY BOARD

- Accomplishment:
Experimental Breeder
Reactor (EBR)-II
Engineering Evaluation/
Cost Analysis
Recommendation



- FY 2011 and 2012 Work Plan Recommendation



EM Environmental Management

safety ❖ performance ❖ cleanup ❖ closure

www.em.doe.gov

Nevada Test Site



1. Availability of Mixed Low-Level Waste Disposal Cells

- Current cell closing November 2010
- New cell planned for early 2011
- Smooth transition important to EM complex
- State of the art engineering for new cell



EM Environmental Management

safety ❖ performance ❖ cleanup ❖ closure

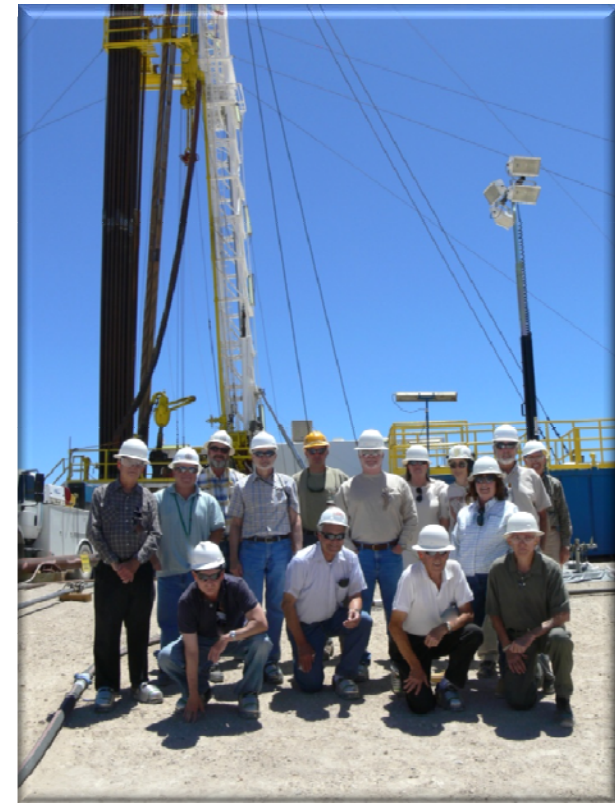
www.em.doe.gov

Nevada Test Site



2. Revised Groundwater Characterization Strategy

- Concern for public protection with regard to contaminated groundwater remains a high priority
- DOE began implementing the revised strategy which is an iterative process allowing for more decision points throughout the modeling of the NTS's diverse hydrogeology
- Board is currently reviewing and preparing recommendation for ways the DOE could enhance the new strategy



EM Environmental Management

safety ❖ performance ❖ cleanup ❖ closure

www.em.doe.gov

Nevada Test Site



3. Membership Appointment Process/Timing

- Board recruitment efforts affected by length of HQ appointment process
- Nevada Site Office submitted membership packet to Headquarters December 30, 2009
- Appointments expected May 2010
- Board concern regarding discouragement of potential members due to length of appointment process



EM *Environmental Management*

safety ❖ performance ❖ cleanup ❖ closure

www.em.doe.gov

Nevada Test Site



- Accomplishment: The Board has transitioned from a committee-based work plan to a full board work plan resulting in a more informed Board and full Board ownership of tasks. As a result, the Board has submitted as many recommendations in the first six months of FY 2010 as in all of FY 2009 and has accelerated its Work Plan completion schedule.



EM Environmental Management

safety ❖ performance ❖ cleanup ❖ closure

www.em.doe.gov

Nevada Test Site



- Major Board Activity: Outreach Efforts Toward Increased CAB Awareness

Based on results of a University of Nevada, Las Vegas questionnaire indicating members of rural communities surrounding the Nevada Test Site view the Board as a positive source of information, the Board is working toward increasing public awareness of its activities.

- Membership recruitment resulting in 18 candidates (11 new and 7 renewals)
- Development of CAB display
- Development of Student Liaison position
- More comprehensive new member orientation



EM *Environmental Management*

safety ❖ performance ❖ cleanup ❖ closure

www.em.doe.gov



Northern New Mexico

- 1a. DOE provide full baseline funding (Base Program) in FY'12 and beyond to meet the clean-up schedule of the New Mexico Order on Consent

- 1b. Remove Transuranic (TRU) Waste from Material Disposal Area G (MDA-G)



EM Environmental Management

safety ❖ performance ❖ cleanup ❖ closure

www.em.doe.gov



Northern New Mexico

2. DOE should focus on continued development of an integrated site-wide Surface Water and Groundwater Monitoring Program which incorporates best management practices for new wells



EM *Environmental Management*

safety ❖ performance ❖ cleanup ❖ closure

www.em.doe.gov



Northern New Mexico

3. Complete clean-up of MDA-B and continue clean-up of the rest of TA-21 and MDA-G



EM *Environmental Management*

safety ❖ performance ❖ cleanup ❖ closure

www.em.doe.gov



Northern New Mexico

- Accomplishment: The NNMCAB approved a recommendation to remove the 33 shafts of Remote Handled Waste from Area G.
- Major Board Activity: The NNMCAB has been in the forefront of safeguarding the water supply in Los Alamos and communities reliant on the Rio Grande Basin.



EM Environmental Management

safety ❖ performance ❖ cleanup ❖ closure

www.em.doe.gov

Oak Ridge



1. Budget and associated milestone issues

- Need to balance the budget allocations to ensure appropriate progress on ETTP closure along with Federal Facility Agreement cleanup plans at ORNL and Y-12
- Concern that future Oak Ridge budgets will be inadequate to accomplish cleanup commitments/goals:
- The Oak Ridge EM funding has declined in recent years while scope has increased, which can affect milestones. This has led to regulatory disputes over milestone commitments



EM *Environmental Management*

safety ❖ performance ❖ cleanup ❖ closure

www.em.doe.gov

Oak Ridge



1. Budget and associated milestone issues (cont'd)

	National DOE-EM Budget	DOE-Oak Ridge EM Funding	Proposed DOE EM Budget for Oak Ridge	Difference from 2008
FY 2008	\$5.78 B	\$493 M		
FY 2009	\$6.016 B	\$499 M		+ \$6 M
FY 2010	\$6.047 B	\$436 M		- \$57 M
FY 2011	\$6.05 B		\$450 M	- \$43 M



EM Environmental Management

safety ❖ performance ❖ cleanup ❖ closure

www.em.doe.gov

Oak Ridge



2. The K-25 Building Tc-99 problem and the significantly increased price tag for K-25 D&D



EM Environmental Management

safety ❖ performance ❖ cleanup ❖ closure

www.em.doe.gov

Oak Ridge



2. The K-25 Building Tc-99 problem and the significantly increased price tag for K-25 D&D (cont'd)

- Tc-99 in the lower part of the east wing of K-25 will increase the cost and delay the project's completion.
- Focus on this deteriorating facility and the cost growth is justifiable, but without additional funding it is taking focus away from other environmental concerns at the site.



EM Environmental Management

safety ❖ performance ❖ cleanup ❖ closure

www.em.doe.gov

Oak Ridge



3. Re-compete of the Oak Ridge EM program contract

- ORSSAB will review the request for proposals for the follow-on contractor



EM *Environmental Management*

safety ❖ performance ❖ cleanup ❖ closure

www.em.doe.gov

Oak Ridge



- Accomplishment: Positive response from DOE-Oak Ridge to the board's recommendation that DOE generate an Abbreviated Quarterly Project Review
- Major Board Activity: Planning for the Spring 2010 EM SSAB Chairs' Meeting



EM Environmental Management

safety ❖ performance ❖ cleanup ❖ closure

www.em.doe.gov

Paducah



1. Provide complete funding for the accelerated remediation of SWMU 4 at the PGDP

- An unlined burial pit, SWMU 4 contains degraded drums of TCE resulting in the primary and secondary sources of the Southwest Plume contamination as it moves toward potentially expanding offsite.
- Acceleration of this project allows for use of a trained work force with security clearances, reduces further contamination to the Regional Groundwater Aquifer, and lowers the risk to human health and safety and the environment.

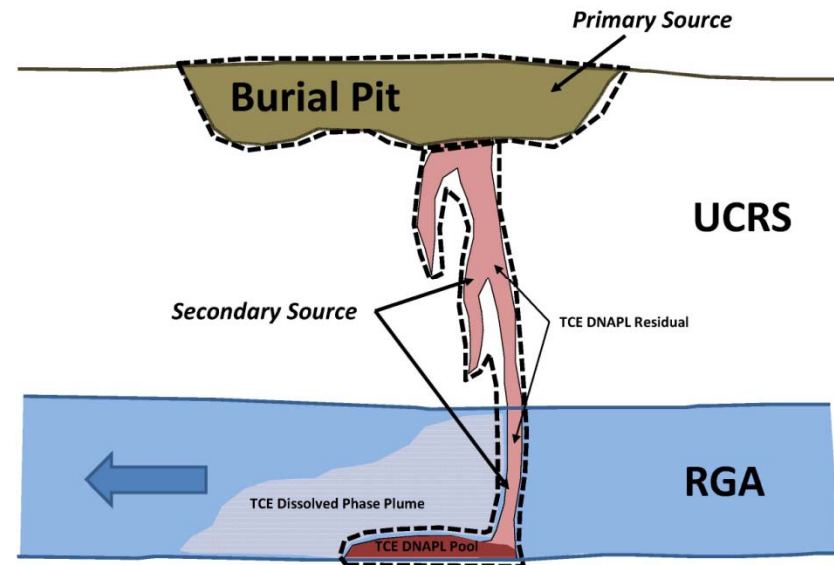


EM Environmental Management

safety ❖ performance ❖ cleanup ❖ closure

www.em.doe.gov

Paducah



EM Environmental Management

safety ❖ performance ❖ cleanup ❖ closure

www.em.doe.gov

Paducah



2. Continue DOE's commitment to involve stakeholders and the community in decisions concerning need, location, and waste acceptance criteria for a potential CERCLA cell
 - Despite obvious cost and schedule advantages to DOE, it is imperative that DOE convince the community that a potential onsite waste disposal facility would be safe and would not have a deleterious effect on the future use of the site.
 - The information presented in public meetings should be in layman's terms that can be easily understood.



EM Environmental Management

safety ❖ performance ❖ cleanup ❖ closure

www.em.doe.gov

Paducah



3. Ensure that DOE commits to maintain site funding at or above currently baselined levels

- ARRA funding has provided for acceleration of remediation work from out-year baseline schedules, potentially accelerating the entire Paducah Project
- Any reduction in future baseline funding could negate gains made from stimulus work and lead to potential increases in lifecycle costs for the Paducah Project
- Maintaining the baseline funding allows DOE to accelerate the entire project and reduces risk to human health and safety and the environment
- Help support work force stability at the site



EM Environmental Management

safety ❖ performance ❖ cleanup ❖ closure

www.em.doe.gov

Paducah



- Accomplishment: Developed and approved a recommendation endorsing the collaborative effort between DOE and regulatory agencies that enabled the swift relocation of the Northwest Plume pump-and-treat extraction well which, in turn, led to increased TCE and Tc-99 removal rates.



EM Environmental Management

safety ❖ performance ❖ cleanup ❖ closure

www.em.doe.gov

Paducah



- Major Board Activity: Developed and approved a Speakers Bureau presentation as part of a renewed community outreach effort. A full calendar of speaking dates is being finalized.



EM Environmental Management

safety ❖ performance ❖ cleanup ❖ closure

www.em.doe.gov

Portsmouth



1. The SSAB's request that DOE find a pathway to reclaim asset metals prior to beginning D&D of the Gaseous Diffusion Plant (GDP)
 - A plan should be in place that would allow DOE to accumulate asset metals, avoiding the potential loss of these assets during the initial stages of D&D at the site.
 - Any decisions concerning metals reclamation should equally weigh human health and safety with economic savings and benefits to the community.



EM *Environmental Management*

safety ❖ performance ❖ cleanup ❖ closure

www.em.doe.gov

Portsmouth



2. DOE's continued involvement with the Piketon community and the surrounding counties in developing a broad future plan for the site

- The SSAB has been a proponent of a future plan that maximizes the potential for economic development and reindustrialization.
- DOE has recently awarded a grant to the Ohio University to help conduct a community wide Future Use Study. The SSAB will be providing input to DOE on the study's guidelines and its eventual output.



EM *Environmental Management*

safety ❖ performance ❖ cleanup ❖ closure

www.em.doe.gov

Portsmouth



3. DOE's evaluation of the 3,700-acre reservation and the immediate release of available land by DOE to the local reuse organization

- The immediate footprint reduction benefits DOE by decreasing surveillance & monitoring costs as well as benefiting the community by providing maximum acreage for reindustrialization efforts.
- The SSAB recommends further studies to determine the potential release of additional land as it becomes available over the next 20 years.



EM *Environmental Management*

safety ❖ performance ❖ cleanup ❖ closure

www.em.doe.gov

Portsmouth



- Accomplishment: As a result of the SSAB expressing a strong desire with Recommendation 10-01, to see a plan from DOE that maximizes the future use of the site, the Ohio University has been tasked to produce a regional study summarizing the public's input on future use scenarios.



EM Environmental Management

safety ❖ performance ❖ cleanup ❖ closure

www.em.doe.gov

Portsmouth



- Major Board Activity: Visiting several DOE or DOE-related sites (*PORTS, SRS, INL, NTS, EnergySolutions, ORR, Mound*) that helped educate the Board in our understanding of work, scope, function of DOE and its programs allows the SSAB to provide better advice and recommendations to DOE.



EM Environmental Management

safety ❖ performance ❖ cleanup ❖ closure

www.em.doe.gov

Savannah River Site



1. Resolve the major legacy of nuclear weapons production at SRS by treating and disposing of liquid waste and closing tanks

- Risk Reduction: Highest Risk in State of South Carolina
- Safely treat and disposition 37 million gallons of radioactive liquid waste and close 49 additional underground storage tanks
- Execution of the Liquid Waste System Plan (Rev. 15) is underway to accelerate tank closures; utilizes key technology deployments



EM Environmental Management

safety ❖ performance ❖ cleanup ❖ closure

www.em.doe.gov

Savannah River Site



2. Consolidation and Disposition of Plutonium

- Discussion of plutonium storage and disposition plans at the SRS date back to the mid-1990's.
- In December 2003, the DNFSB urged DOE to “Expedite the development of a complete, well-considered plan for the disposition of all excess plutonium to preclude unnecessary extended storage of plutonium at SRS.”
- DOE needs to finalize plans for the disposition to preclude unnecessary extended storage of plutonium at the SRS as promised to the state of South Carolina.
- Plan promised, but significantly overdue



EM *Environmental Management*

safety ❖ performance ❖ cleanup ❖ closure

www.em.doe.gov

Savannah River Site



3. Lack of a Federal Repository for Nuclear Waste Disposition and Storage

- The waste content of the SRS Defense Waste Processing Facility canisters has been formulated based on the waste acceptance criteria for the Yucca Mountain Federal Repository.
- The communities surrounding SRS are beginning to believe that the Savannah River Site will be a de facto long-term waste storage site if a federal repository for nuclear waste does not become operational.
- The state of South Carolina has been promised by DOE that the state will not be used for long-term storage of plutonium or High Level Waste.
- Credibility and costs are at issue. To study another waste federal repository to the same degree as Yucca Mountain would take decades to complete. Continuing to store waste at **multiple sites** around the country is a safety/security concern.



EM Environmental Management

safety ❖ performance ❖ cleanup ❖ closure

www.em.doe.gov

Savannah River Site



- Accomplishment: SRS CAB Recommendation #265 Site Performance Metrics – ***in addition*** to Gold Performance Measures reporting, the DOE accepted our recommendation to develop and implement site-specific metrics for SRS to more fully communicate site quantitative progress (in Environmental Restoration, Deactivation and Decommissioning, Waste Management Operations, Nuclear Material Disposition, and the American Recovery and Reinvestment Act) to the SRS CAB and the public.
 - Based on our recommendation, performance measures have been identified for the strategies incorporated in the 2009 SRS Strategic Plan, in particular for Liquid Waste, Nuclear Materials, and the American Reinvestment and Recovery Act .
 - Beginning January 2010, the CAB will receive quarterly updates. The site-specific performance measures track the history, actuals, target, and end state for each measure.



EM Environmental Management

safety ❖ performance ❖ cleanup ❖ closure

www.em.doe.gov

Savannah River Site



- Major Board Activities:
 - Supported and participated in the EPA Superfund Job Training efforts to provide jobs for under-served citizens
 - Continued the Educational Workshop series on Technologies of the Soil and Groundwater cleanup efforts
 - Toured the Liquid Waste Facilities



EM Environmental Management

safety ❖ performance ❖ cleanup ❖ closure

www.em.doe.gov