



U.S. DEPARTMENT OF  
**ENERGY**

# **Environmental Management Advisory Board Meeting**

**Tracy Mustin**

**December 3, 2012**



**EM** *Environmental Management*

safety ♦ performance ♦ cleanup ♦ closure

[www.em.doe.gov](http://www.em.doe.gov)

# 200 West Groundwater Treatment Facility, Hanford



**EM** Environmental Management

safety ♦ performance ♦ cleanup ♦ closure

[www.em.doe.gov](http://www.em.doe.gov)

# F Reactor Area, Hanford



**EM** *Environmental Management*

safety ♦ performance ♦ cleanup ♦ closure

[www.em.doe.gov](http://www.em.doe.gov)

# Closure of Tanks 18 and 19 at SRS



**EM** Environmental Management

safety ♦ performance ♦ cleanup ♦ closure

[www.em.doe.gov](http://www.em.doe.gov)

# DUF<sub>6</sub> at PPPO

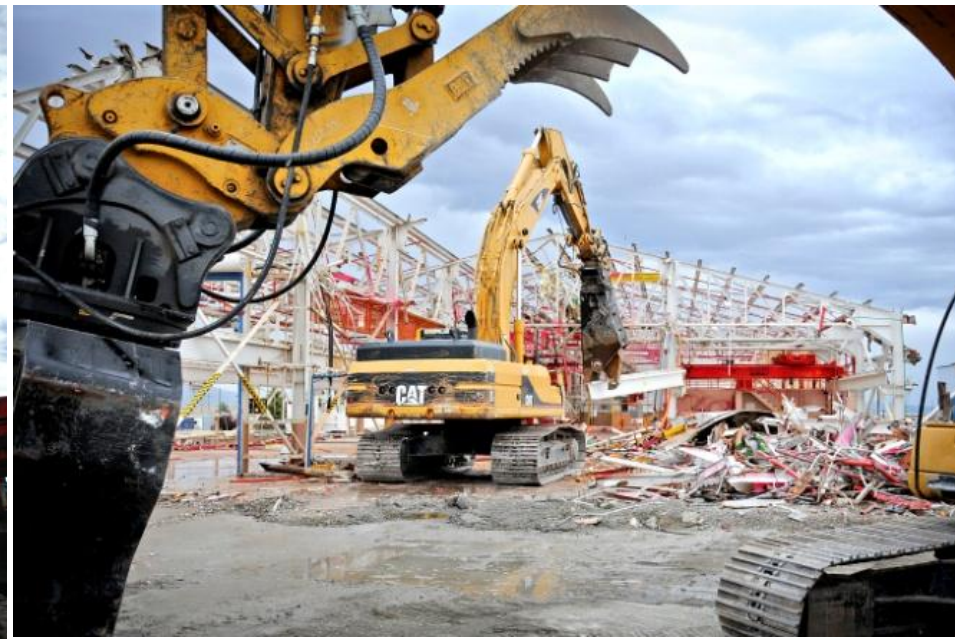


**EM** Environmental Management

safety ♦ performance ♦ cleanup ♦ closure

[www.em.doe.gov](http://www.em.doe.gov)

# Idaho On-Site Reactor Disposal



**EM** Environmental Management

safety ♦ performance ♦ cleanup ♦ closure

[www.em.doe.gov](http://www.em.doe.gov)

# TRU Waste Shipment at LANL



**EM** Environmental Management

safety ♦ performance ♦ cleanup ♦ closure

[www.em.doe.gov](http://www.em.doe.gov)

# Footprint Reduction at K-33, Oak Ridge



**EM** *Environmental Management*

safety ❖ performance ❖ cleanup ❖ closure

[www.em.doe.gov](http://www.em.doe.gov)



# K-25, Oak Ridge



**EM** *Environmental Management*

safety ♦ performance ♦ cleanup ♦ closure

[www.em.doe.gov](http://www.em.doe.gov)

# Biomass Plant at SRS



**EM** Environmental Management

safety ♦ performance ♦ cleanup ♦ closure

[www.em.doe.gov](http://www.em.doe.gov)