



Western Electricity Coordinating Council

Transmission Expansion Planning Policy Committee

**Spring 2009 Technical Workshop
U.S. DOE 2009 Congestion Study**

**Scott Cauchois, TEPPC Chair
March 25, 2009**

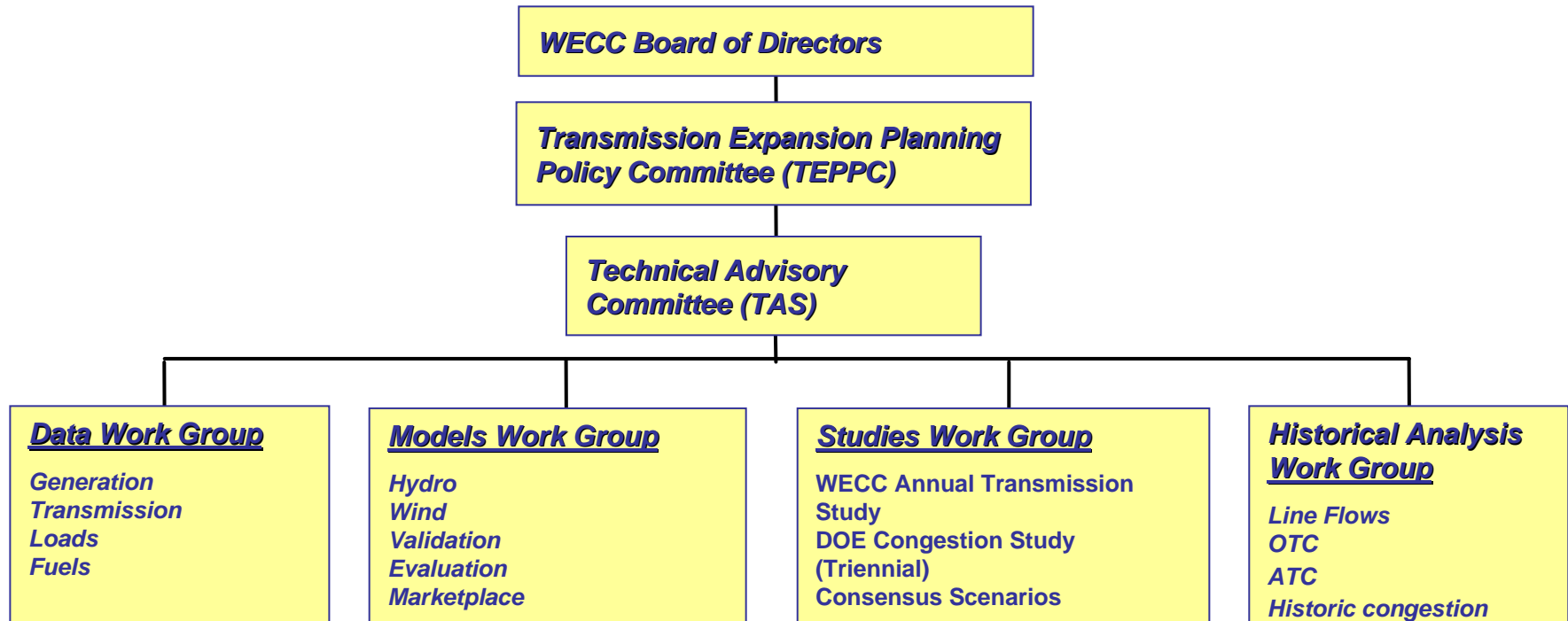
TEPPC

- **Committee of the WECC Board (2006)**
- **WECC footprint – Western Interconnection**
- **2 board incl. chair/16 stakeholder members**
- **Dedicated WECC staff**
- **Regular quarterly meetings**
- **Western coordination call 2nd Tuesday each month**

TEPPC Charter

- **Oversee production cost & other data management**
- **Develop & implement interconnection-wide expansion planning policies and processes *in coordination with the Planning Coordination Committee and subregional planning groups (SPGs)***
- ***Guiding/improving economic analysis & modeling of interconnection***

Organizational Structure



Notes:

1. TEPPC has a balanced governance whose members represent: the WECC Board, subregional planning groups, state regulators, state/provincial energy offices, transmission owners, load serving entities, generation owners, consumers advocates, IRP experts, wholesale market experts and environmental interests.
2. TAS and work group membership are open to any party .

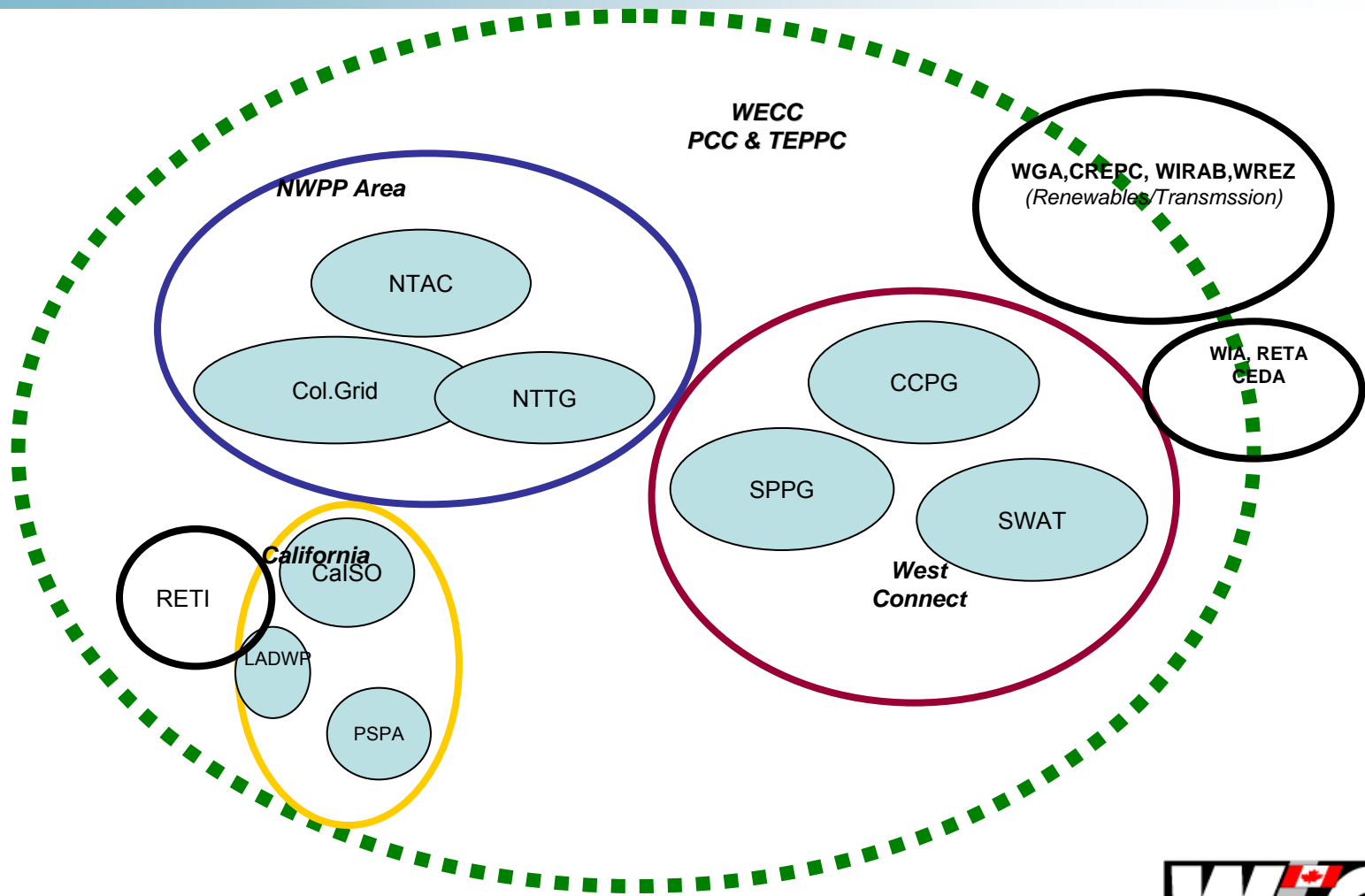
TEPPC's Historical Context

- **SSG-WI anticipated coordination among RTOs (didn't happen)**
- **Western Congestion Analysis Task Force provided analysis for DOE 2006 congestion study. TEPPC assumed responsibilities.**
- **FERC Order 890**
- **Heavy push for renewables**
- **Creation of new/evolution of SPGs with policy & technical objectives**
- **DOE 2009 congestion study**






Stakeholders

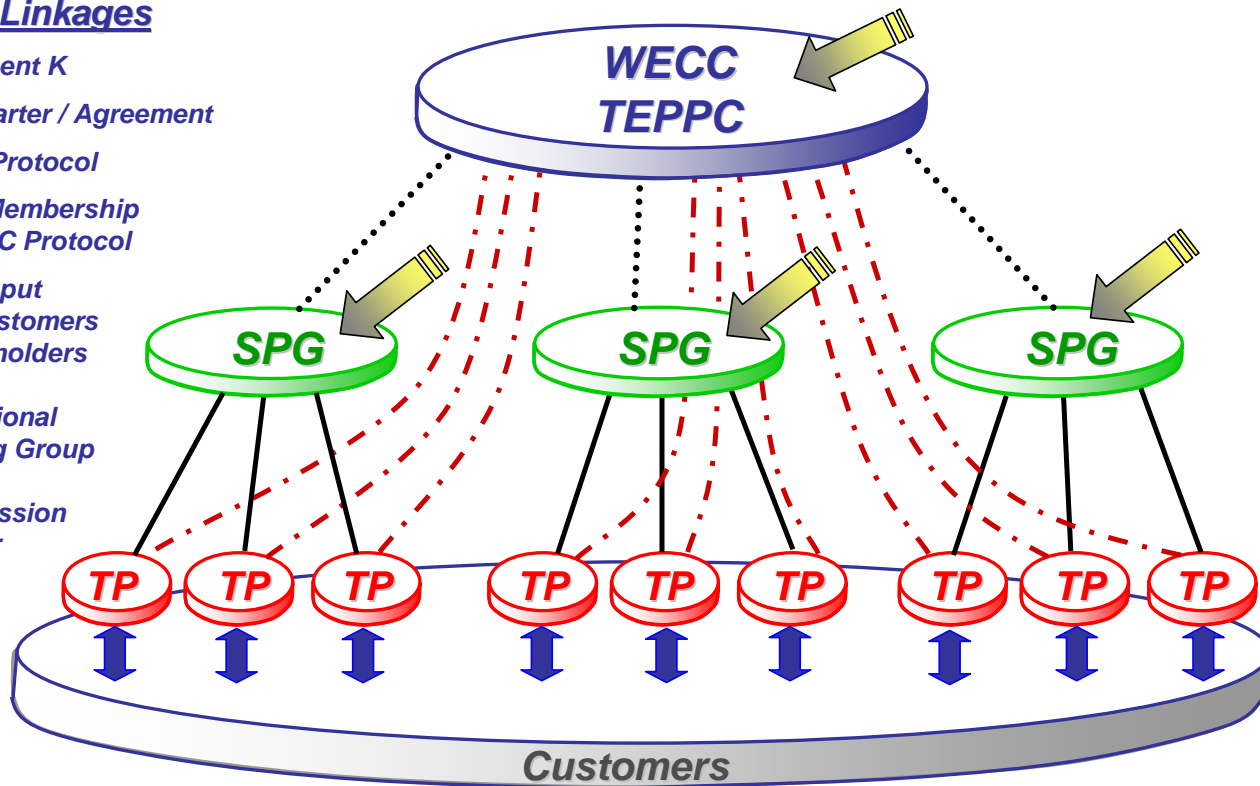
- **Transmission owners**
- **Generators**
- **State commissions/agencies**
- **Technical specialists, e.g., IRP**
- **Load serving entities**
- **Subregional planning groups**
- **Environmental interests**
- **Consumer interests**
- **WGA (governors)**
- **WIRAB (West. Interstate Advisory Bd./890)**

Planning at subregional level



Layer Linkages

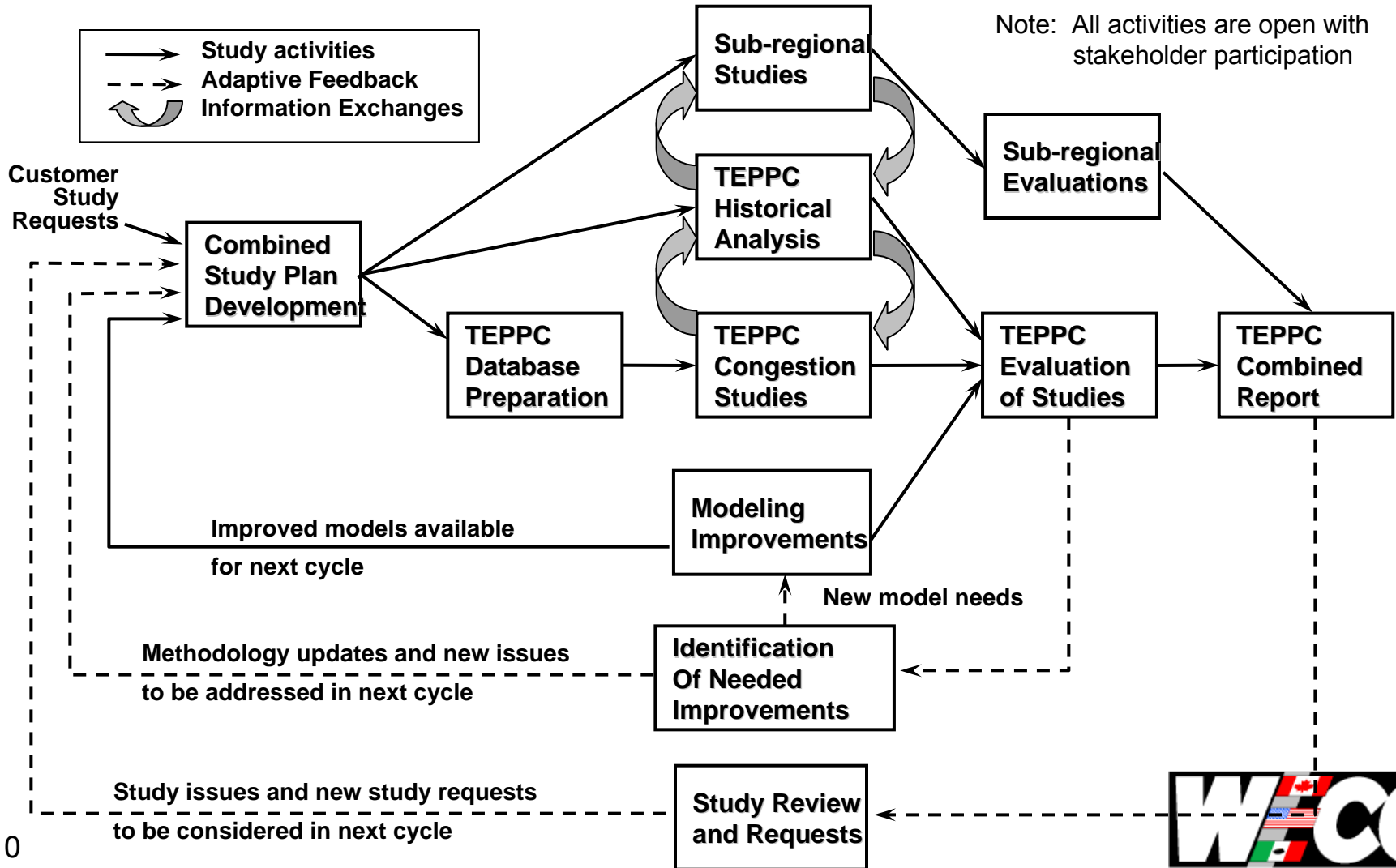
-  Attachment K
-  SPG Charter / Agreement
-  TEPPC Protocol
-  WECC Membership & TEPPC Protocol
-  Direct Input from Customers & Stakeholders
- SPG** Sub-regional Planning Group
- TP** Transmission Provider



Accomplishments

- **2007 pilot study & report (heavy renewables)**
- **Protocol to assist SPGs and TOs in Order 890 compliance**
- **Annual synchronized study cycle**
 - **Annual study request window Nov. 1 – Jan. 31**
- **Open, transparent process**

Annual Transmission Expansion Study Cycle



Products in Pipeline

- **Historic path analysis and 2008 study results**
- **2008 study responded to unprecedented requests for analysis of transmission implications of renewables and carbon reduction policy, e.g. cap & trade**
- **2009 study plan will build on 2008 with adaptive learning built in**

TEPPC CONTACTS

- Scott Cauchois, Chair
 - Scott.Cauchois@comcast.net
- Brad Nickell, WECC Staff
 - Bnickell@wecc.biz
- Tom Schneider, WECC Staff
 - Tschneider@wecc.biz
- Steve Walton, TEPPC facilitator
 - swiftcreekconsulting@msn.com
- <http://www.wecc.biz>