

## **Appendix D: Western Area Power Administration Construction Standards**



# CONSTRUCTION STANDARDS

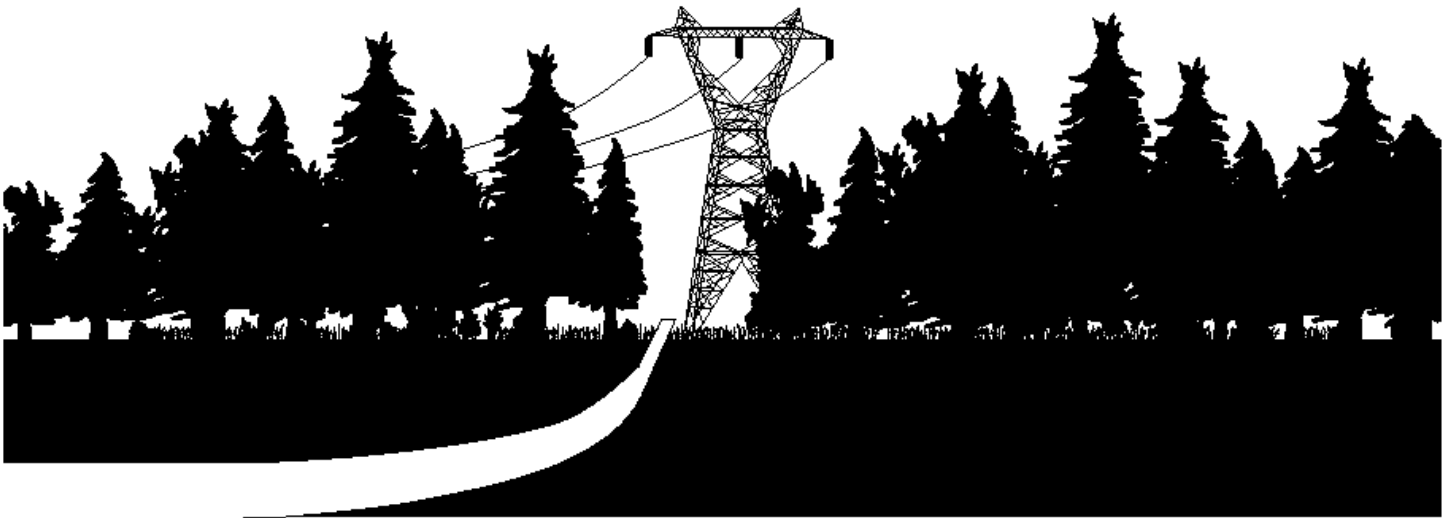
---

---

## **STANDARD 13** **ENVIRONMENTAL QUALITY PROTECTION**

---

---



July 2009



STANDARD 13 - ENVIRONMENTAL QUALITY PROTECTION

TABLE OF CONTENTS

	Page Number
<b>SECTION 13.1--CONTRACTOR FURNISHED DATA</b> .....	4
1. Recycled Material Quantity Report .....	4
2. Recovered Material and Biobased Products Report .....	4
3. Reclaimed Refrigerant Receipt .....	4
4. Waste Material Quantity Report .....	4
5. Spill Prevention Notification and Cleanup Plan (Plan) .....	4
6. Tanker Oil Spill Prevention and Response Plan .....	4
7. Pesticide Use Plan .....	4
8. Treated Wood Pole and Members Recycling Consumer Information Receipt .....	4
9. Prevention of Air Pollution .....	5
10. Asbestos Licenses or Certifications .....	5
11. Lead Paint Notices .....	5
12. Water Pollution Permits .....	5
13. Pcb Test Report .....	5
14. Oil and Oil-Filled Electrical Equipment Receipt .....	5
15. Osha Pcb Training Records .....	5
16. Cleanup Work Management Plan .....	5
17. Post Cleanup Report .....	5
<b>SECTION 13.2--ENVIRONMENTAL REQUIREMENTS</b> .....	6
<b>SECTION 13.3--LANDSCAPE PRESERVATION</b> .....	7
1. General .....	7
2. Construction Roads .....	7
3. Construction Facilities .....	7
<b>SECTION 13.4--PRESERVATION OF CULTURAL AND PALEONTOLOGICAL RESOURCES</b> .....	8
1. General .....	8
2. Known Cultural or Paleontological Sites .....	8
3. Unknown Cultural or Paleontological Sites .....	8
<b>SECTION 13.5--NOXIOUS WEED CONTROL</b> .....	9
1. General .....	9
<b>SECTION 13.6--RECYCLED MATERIAL QUANTITIES</b> .....	10
1. General .....	10
2. Recycled Material Quantity Report .....	10
<b>SECTION 13.7--USE OF RECOVERED MATERIAL AND BIOBASED PRODUCTS</b> .....	11
1. Recovered Material Products .....	11
2. Biobased Products .....	12
3. Recovered Material and Biobased Products Report .....	14
<b>SECTION 13.8--DISPOSAL OF WASTE MATERIAL</b> .....	16
1. General .....	16
2. Hazardous, Universal, and Non-Hazardous Wastes .....	16
3. Used Oil .....	16
4. Recyclable Material .....	16
5. Refrigerants and Receipts .....	16
6. Halons .....	16
7. Sulfur Hexafluoride (SF <sub>6</sub> ) .....	16
8. Waste Material Quantity Report .....	16

**STANDARD 13 - ENVIRONMENTAL QUALITY PROTECTION**

**SECTION 13.9--CONTRACTOR'S LIABILITY FOR REGULATED MATERIAL INCIDENTS** ..... 17

- 1. General ..... 17
- 2. Supervision ..... 17

**SECTION 13.10--POLLUTANT SPILL PREVENTION, NOTIFICATION, AND CLEANUP** ..... 18

- 1. General ..... 18
- 2. Spill Prevention Notification and Cleanup Plan (Plan)..... 18
- 3. Tanker Oil Spill Prevention and Response Plan..... 18

**SECTION 13.11--PESTICIDES** ..... 19

- 1. General ..... 19
- 2. Environmental Protection Agency Registration ..... 19
- 3. Pesticide Use Plan..... 19

**SECTION 13.12--TREATED WOOD POLES AND MEMBERS RECYCLING OR DISPOSAL** ..... 20

**SECTION 13.13--PREVENTION OF AIR POLLUTION** ..... 21

- 1. General ..... 21
- 2. Machinery Air Emissions ..... 21
- 3. Dust Abatement ..... 21

**SECTION 13.14--HANDLING AND MANAGEMENT OF ASBESTOS CONTAINING MATERIAL** ..... 22

- 1. General ..... 22
- 2. Transportation of Asbestos Waste..... 22
- 3. Certificates of Disposal And Receipts..... 22

**SECTION 13.15--MATERIAL WITH LEAD-BASED PAINT** ..... 23

- 1. General ..... 23
- 2. Transfer of Property ..... 23
- 3. Certificates of Disposal And Receipts..... 23

**SECTION 13.16--PREVENTION OF WATER POLLUTION** ..... 24

- 1. General ..... 24
- 2. Permits ..... 24
- 3. Excavated Material and Other Contaminant Sources ..... 24
- 4. Management of Waste Concrete or Washing of Concrete Trucks ..... 24
- 5. Stream Crossings ..... 24

**SECTION 13.17--TESTING, DRAINING, REMOVAL, AND DISPOSAL OF OIL-FILLED ELECTRICAL EQUIPMENT** ..... 25

- 1. Sampling and Testing Of Insulating Oil For Pcb Content ..... 25
- 2. PCB Test Report..... 25
- 3. Oil Containing PCB..... 25
- 4. Removal and Disposal of Insulating Oil and Oil-Filled Electrical Equipment..... 25
- 5. Oil and Oil-Filled Electrical Equipment Receipt ..... 25

**SECTION 13.18--REMOVAL OF OIL-CONTAMINATED MATERIAL** ..... 26

- 1. General ..... 26
- 2. Cleanup Work Management Plan..... 26
- 3. Excavation and Cleanup..... 26
- 4. Temporary Stockpiling ..... 26
- 5. Sampling and Testing ..... 26
- 6. Transportation and Disposal Of Contaminated Material..... 26
- 7. Post Cleanup Report ..... 26

**STANDARD 13 - ENVIRONMENTAL QUALITY PROTECTION**

**SECTION 13.19--CONSERVATION OF NATURAL RESOURCES** ..... 28

- 1. General ..... 28
- 2. Known Occurrence of Protected Species or Habitat ..... 28
- 3. Unknown Occurrence of Protected Species or Habitat ..... 28

## STANDARD 13 - ENVIRONMENTAL QUALITY PROTECTION

### SECTION 13.1--CONTRACTOR FURNISHED DATA

1. RECYCLED MATERIAL QUANTITY REPORT: Submit quantities for recycled material listed in Section 13.6, "Recycled Material Quantities", to the COR after completion and prior to submittal of final invoice.
2. RECOVERED MATERIAL AND BIOBASED PRODUCTS REPORT: Provide the COR the following information for purchases of items listed in Section 13.7, "Use of Recovered Material And Biobased Products":
  - (1) Quantity and cost of listed items with recovered or biobased material content and quantity and cost of listed items without recovered or biobased material content after completion and prior to submittal of final invoice.
3. RECLAIMED REFRIGERANT RECEIPT: A receipt from the reclaimer stating that the refrigerant was reclaimed, the amount and type of refrigerant, and the date shall be submitted to the COR after completion and prior to submittal of final invoice in accordance with Section 13.8.5, "~~Refrigerants And Receipts~~".
4. WASTE MATERIAL QUANTITY REPORT: Submit quantities of total project waste material disposal as listed below to the COR after completion and prior to submittal of final invoice in accordance with Section 13.8.8, "~~Waste Material Quantity Report~~".
  - (1) Sanitary Wastes: Volume in cubic yards or weight in pounds.
  - (2) Hazardous or Universal Wastes: Weight in pounds.
  - (3) PCB Wastes: Weight in pounds.
  - (4) Other regulated wastes (e.g., lead-based paint or asbestos): Weight in pounds (specify type of waste in report).
5. SPILL PREVENTION NOTIFICATION AND CLEANUP PLAN (Plan): Submit the Plan as described in Section 13.10.2, "Spill Prevention Notification and Cleanup Plan", to the COR for approval 14 days prior to start of work. Approval of the Plan is for the purpose of determining compliance with the specifications only and shall not relieve the Contractor of the responsibility for compliance with all Federal, State, and Local regulations.
6. TANKER OIL SPILL PREVENTION AND RESPONSE PLAN: Submit the Plan as described in Section 13.10.3, "Tanker Oil Spill Prevention and Response Plan", to the COR for approval 14 days prior to start of work. Approval of the Plan is for the purpose of determining compliance with the specifications only and shall not relieve the Contractor of the responsibility for compliance with all Federal, State, and Local regulations.
7. PESTICIDE USE PLAN: Submit two copies of a pesticide use plan as described in Section 13.11.3, "~~Pesticide Use Plan~~", to the COR for approval 14 days prior to use. Approval of the plan is for the purpose of determining compliance with the specifications only and shall not relieve the Contractor of the responsibility for compliance with all Federal, State, and Local regulations. Within seven days after application, submit a written report in accordance with Standard 2 – Sitework, Section 2.1.1.5, "~~Soil-Applied Herbicide~~".
8. TREATED WOOD POLE AND MEMBERS RECYCLING CONSUMER INFORMATION RECEIPT: Submit treated wood pole and members consumer receipt forms to the COR after completion and prior to submittal of final invoice (see 13.12, "~~Treated Wood Poles and Members Recycling or Disposal~~").

## STANDARD 13 - ENVIRONMENTAL QUALITY PROTECTION

9. PREVENTION OF AIR POLLUTION: Submit a copy of permits, if required, from Federal, State, or local agencies to the COR 14 days prior to the start of work.
10. ASBESTOS LICENSES OR CERTIFICATIONS: Submit a copy of licenses and/or certifications for asbestos work as described in 13.14, ~~“Handling and Management of Asbestos Containing Material”~~ paragraph a., to the COR prior to work. Submit copies of certificates of disposal and/or receipts for waste to the COR after completion and prior to submittal of final invoice.
11. LEAD PAINT NOTICES: Submit a copy of lead paint notices as described in 13.15, ~~“Material with Lead-based Paint”~~ paragraph b., to the COR upon completion and prior to submittal of final invoice. Submit copies of certificates of disposal and/or receipts for waste to the COR after completion and prior to submittal of final invoice.
12. WATER POLLUTION PERMITS: Submit copies of any water pollution permits as described in 13.16, ~~“Prevention of Water Pollution”~~ paragraph b., to the COR prior to work.
13. PCB TEST REPORT: Submit a PCB test report as described in 13.17, ~~“Testing, Draining, Removal, and Disposal of Oil-filled Electrical Equipment”~~ paragraph b., prior to draining, removal, or disposal of oil or oil-filled equipment that is designated for disposal.
14. OIL AND OIL-FILLED ELECTRICAL EQUIPMENT RECEIPT: Obtain and submit a receipt for oil and oil-filled equipment transported and disposed, recycled, or reprocessed as described in 13.17, ~~“Testing, Draining, Removal, and Disposal of Oil-filled Electrical Equipment”~~, to the COR upon completion and prior to submittal of final invoice.
15. OSHA PCB TRAINING RECORDS: Submit employee training documentation records to the COR 14 days prior to the start of work as described in 13.18.1.
16. CLEANUP WORK MANAGEMENT PLAN: Submit a Cleanup Work Management Plan as described in 13.18, ~~“Removal of Oil-contaminated Material”~~ paragraph b., to the COR for approval 14 days prior to the start of work. Approval of the plan is for the purpose of determining compliance with the specifications only and shall not relieve the Contractor of the responsibility for compliance with all Federal, State, and Local regulations.
17. POST CLEANUP REPORT: Submit a Post-Cleanup Report as described in 13.18, ~~“Removal of Oil-contaminated Material”~~ paragraph g., to the COR upon completion and prior to submittal of final invoice.

## **STANDARD 13 - ENVIRONMENTAL QUALITY PROTECTION**

### **SECTION 13.2--ENVIRONMENTAL REQUIREMENTS**

Comply with Federal, State, and local environmental laws and regulations. The sections in this Standard further specify the requirements.



## STANDARD 13 - ENVIRONMENTAL QUALITY PROTECTION

### SECTION 13.3--LANDSCAPE PRESERVATION

1. GENERAL: Preserve landscape features in accordance with the contract clause titled "Protection of Existing Vegetation, Structures, Equipment, Utilities, and Improvements."
2. CONSTRUCTION ROADS: Location, alignment, and grade of construction roads shall be subject to the COR's approval. When no longer required, construction roads shall be restored to their original condition. Surfaces of construction roads shall be scarified to facilitate natural revegetation, provide for proper drainage, and prevent erosion. If re-vegetation is required, use regionally native plants.
3. CONSTRUCTION FACILITIES: Shop, office, and yard areas shall be located and arranged in a manner to preserve trees and vegetation to the maximum practicable extent and prevent impact on sensitive riparian areas and flood plains. Storage and construction buildings, including concrete footings and slabs, shall be removed from the site prior to contract completion. The area shall be re-graded as required so that all surfaces drain naturally, blend with the natural terrain, and are left in a condition that will facilitate natural revegetation, provide for proper drainage, and prevent erosion or transport of sediment and pollutants. If re-vegetation is required, use regionally native plants.

## STANDARD 13 - ENVIRONMENTAL QUALITY PROTECTION

### SECTION 13.4--PRESERVATION OF CULTURAL AND PALEONTOLOGICAL RESOURCES

1. **GENERAL:** Do not remove or alter cultural artifacts or paleontological resources (fossils). Cultural artifacts may be of scientific or cultural importance and include bones, pottery, glass, projectile points (arrowheads), other stone or metal tools, historic buildings, and features. Paleontological resources can be of scientific importance and include mineralized animals and plants or trace fossils such as footprints. Both cultural and paleontological resources are protected by Federal Regulations during Federal construction projects. Contractor must always stay within Western's right-of-way and/or easement.
2. **KNOWN CULTURAL OR PALEONTOLOGICAL SITES:** Following issuance of notice to proceed, Western will provide two sets of plan and profile drawings showing sensitive areas located on or immediately adjacent to the transmission line right-of-way and/or facility. These areas shall be considered avoidance areas. Prior to any construction activity, the avoidance areas shall be marked on the ground in a manner approved by the COR. Instruct employees, subcontractors, and others that vehicular or equipment access to these areas is prohibited. If access is absolutely necessary, first obtain approval from the COR. Western will remove the markings during or following final cleanup. For some project work, Western will require an archaeological, paleontological or tribal monitor at or near cultural or paleontological site locations. The contractor shall work with the monitor to insure that sensitive locations are avoided. Where monitors are required, the monitor shall meet with the crew each morning to go over the day's work. The monitor will also conduct awareness training for all contractors prior to any work in the field. Untrained personnel shall not be allowed in the construction area. For areas designated as sensitive and requiring a monitor, the contractor may not access those areas without a monitor being present.
3. **UNKNOWN CULTURAL OR PALEONTOLOGICAL SITES:** On rare occasions cultural or paleontological sites may be discovered during excavation or other earth-moving activities.
  - (1) **Reporting:** If evidence of a cultural or paleontological site is discovered, cease work in the area immediately and notify the COR of the location and nature of the findings. If a monitor is present, the monitor should also be notified. Stop all activities within a 200-foot radius of the discovery and do not proceed with work within that radius until directed to do so by the COR.
  - (2) **Care of Evidence:** Protect the area. Do not remove, handle, alter, or damage artifacts or fossils uncovered during construction.

## STANDARD 13 - ENVIRONMENTAL QUALITY PROTECTION

### SECTION 13.5--NOXIOUS WEED CONTROL

1. GENERAL: Comply with Federal, state, and local noxious weed control regulations. Provide a "clean vehicle policy" while entering and leaving construction areas to prevent transport of noxious weed plants and/or seed. Transport only construction vehicles that are free of mud and vegetation debris to staging areas and the project right-of-way.

## STANDARD 13 - ENVIRONMENTAL QUALITY PROTECTION

### SECTION 13.6--RECYCLED MATERIAL QUANTITIES

1. GENERAL: Record quantities of the following material by category that is salvaged, recycled, reused, or reprocessed:
  - (1) Transformers, Breakers: Weight without oil.
  - (2) Electrical Conductors: Length in feet and Type (for example, ACSR, Copper, and gauge).
  - (3) Steel: Weight in pounds or tons.
  - (4) Aluminum: Weight in pounds or tons
  - (5) Copper: Weight in pounds or tons..
  - (6) Other Metals: Weight in pounds or tons.
  - (7) Oil: Gallons (separate by type - less than 2 ppm PCB, 2 to 50 ppm PCB, and 50 or greater ppm PCB).
  - (8) Gravel, Asphalt, Or Concrete: Weight in pounds or tons.
  - (9) Batteries: Weight in pounds.
  - (10) Wood Poles and Crossarms: Weight in pounds.
  - (11) Wood construction material: Weight in pounds.
  - (12) Cardboard: Weight in pounds.
  - (13) Porcelain insulators: Weight in pounds.
2. RECYCLED MATERIAL QUANTITY REPORT: Submit quantities for recycled material listed above to the COR after completion and prior to submittal of final invoice.

## STANDARD 13 - ENVIRONMENTAL QUALITY PROTECTION

### SECTION 13.7--USE OF RECOVERED MATERIAL AND BIOBASED PRODUCTS

1. RECOVERED MATERIAL PRODUCTS: If the products listed below are obtained as part of this project, purchase the items with the highest recovered material content possible unless recovered material products are not available: 1) competitively within a reasonable time frame; 2) meeting reasonable performance standards as defined in the Standards or Project Specifications; or 3) at a reasonable price.

- (1) Construction Products:

- 1) Building Insulation Products.
- 2) Carpet.
- 3) Carpet cushion.
- 4) Cement and concrete containing coal fly ash, ground granulated blast furnace slag, cenospheres, or silica fume.
- 5) Consolidated and reprocessed latex paint.
- 6) Floor Tiles.
- 7) Flowable fill.
- 8) Laminated Paperboard.
- 9) Modular threshold ramps.
- 10) Nonpressure pipe.
- 11) Patio Blocks.
- 12) Railroad grade crossing surfaces.
- 13) Roofing materials.
- 14) Shower and restroom dividers/partitions.
- 15) Structural Fiberboard.

- (2) Landscaping Products:

- 1) Compost made from yard trimmings or food waste.
- 2) Garden and soaker hoses.
- 3) Hydraulic Mulch.
- 4) Lawn and garden edging.
- 5) Plastic lumber landscaping timbers and posts.

- (3) Non-paper Office Products:

- 1) Binders, clipboards, file folders, clip portfolios, and presentation folders.
- 2) Office furniture.
- 3) Office recycling containers.
- 4) Office waste receptacles.
- 5) Plastic desktop accessories.

## STANDARD 13 - ENVIRONMENTAL QUALITY PROTECTION

- 6) Plastic envelopes.
  - 7) Plastic trash bags.
  - 8) Printer ribbons.
  - 9) Toner cartridges.
- (4) Paper and Paper Products:
- 1) Commercial/industrial sanitary tissue products.
  - 2) Miscellaneous papers.
  - 3) Newsprint.
  - 4) Paperboard and packaging products.
  - 5) Printing and writing papers.
- (5) Park and Recreation Products:
- 1) Park benches and picnic tables.
  - 2) Plastic fencing.
  - 3) Playground equipment.
  - 4) Playground surfaces.
  - 5) Running tracks.
- (6) Transportation Products:
- 1) Channelizers.
  - 2) Delineators.
  - 3) Flexible delineators.
  - 4) Parking stops.
  - 5) Traffic barricades.
  - 6) Traffic cones.
- (7) Vehicular Products:
- 1) Engine coolants.
  - 2) Rebuilt Vehicular Parts.
  - 3) Re-refined lubricating oils.
  - 4) Retread tires.
- (8) Miscellaneous Products:
- 1) Awards and plaques.
  - 2) Bike racks.
  - 3) Blasting grit.
  - 4) Industrial drums.
  - 5) Manual-grade strapping.
  - 6) Mats.
  - 7) Pallets.
  - 8) Signage.
  - 9) Sorbents.
- (9) For a complete listing of products and recommendations for recovered content, see <http://www.epa.gov/cpg/products.htm>
2. BIOBASED PRODUCTS: If the products listed below are obtained as part of this project, purchase the items with the highest biobased content possible and no less than the percent indicated for each product unless biobased products are not available: 1) competitively within a reasonable

## STANDARD 13 - ENVIRONMENTAL QUALITY PROTECTION

time frame; 2) meeting reasonable performance standards as defined in the Standards or Project Specifications; or 3) at a reasonable price.

- (1) Mobile Equipment Hydraulic Fluids (minimum 24% biobased content).
- (2) Urethane Roof Coatings (minimum 62% biobased content).
- (3) Water Tank Coatings (minimum 62% biobased content).
- (4) Diesel Fuel Additives (minimum 93% biobased content).
- (5) Penetrating Lubricants (minimum 71% biobased content).
- (6) Bedding, Bed Linens, and Towels (minimum 18% biobased content).
- (7) Adhesive and mastic removers 58%.
- (8) Plastic insulating foam for residential and commercial construction 7%.
- (9) Hand cleaners and sanitizers.
  - 1) Hand cleaners—64 %
  - 2) Hand sanitizers (including hand cleaners and sanitizers)—73 %
- (10) Composite panels.
  - 1) Plastic lumber composite panels—23 %
  - 2) Acoustical composite panels—37 %
  - 3) Interior panels—55 %
  - 4) Structural interior panels—89 %
  - 5) Structural wall panels—94 %
- (11) Fluid-filled transformers.
  - 1) Synthetic ester-based fluid-filled transformers—66 %
  - 2) Vegetable oil-based fluid-filled transformers—95 %
- (12) Disposable containers 72%.
- (13) Fertilizers 71%.
- (14) Sorbents 89%.
- (15) Graffiti and grease removers 34%.
- (16) 2-Cycle engine oils 34%.
- (17) Lip care products 82%.
- (18) Films (used in packaging, wrappings, linings, and other similar applications).
  - 1) Semi-durable films—45%
  - 2) Non-durable films—85%
- (19) Stationary equipment hydraulic Fluids 44%.

## STANDARD 13 - ENVIRONMENTAL QUALITY PROTECTION

- (20) Disposable cutlery 48%.
- (21) Glass cleaners 49%.
- (22) Greases.
  - 1) Food grade grease—42%
  - 2) Multipurpose grease—72%
  - 3) Rail track grease—30%
  - 4) Truck grease—71%
  - 5) Greases not elsewhere specified—75%
- (23) Dust suppressants 85%.
- (24) Carpets 7%.
- (25) Carpet and upholstery cleaners.
  - 1) General purpose cleaners—54%
  - 2) Spot removers—7%
- (26) Bathroom and spa cleaners 74%.
- (27) Concrete and asphalt release fluids 87%.
- (28) General purpose de-icers 93%.
- (29) Firearm lubricants 49%.
- (30) Floor strippers 78%.
- (31) Laundry products.
  - 1) Pretreatment/spot removers—46%
  - 2) General purpose laundry products—34%
- (32) Metalworking fluids.
  - 1) Straight oils—66%
  - 2) General purpose soluble, semisynthetic, and synthetic oils—57%
  - 3) High performance soluble, semisynthetic, and synthetic oils—40%
- (33) Wood and concrete sealers.
  - 1) Penetrating liquids—79%
  - 2) Membrane concrete sealers—11%

For additional information regarding biobased products, see <http://www.biobased.oce.usda.gov>

- 3. RECOVERED MATERIAL AND BIOBASED PRODUCTS REPORT: Provide the COR the following information for purchases of those items listed above:
  - (1) Quantity and cost of listed items with recovered or biobased material content and quantity and cost of listed items without recovered or biobased material content after completion and prior to submittal of final invoice.



## STANDARD 13 - ENVIRONMENTAL QUALITY PROTECTION

- (2) Written justification 7 work days prior to purchase of listed items if recovered material or biobased products are not available: 1) competitively within a reasonable time frame; 2) meeting reasonable performance standards as defined in the Standards or Project Specifications; or 3) at a reasonable price.

## STANDARD 13 - ENVIRONMENTAL QUALITY PROTECTION

### SECTION 13.8--DISPOSAL OF WASTE MATERIAL

1. GENERAL: Dispose or recycle waste material in accordance with applicable Federal, State and Local regulations and ordinances. In addition to the requirements of the Contract Clause -"Gleaning Up", remove all waste material from the construction site. No waste shall be left on Western property, right-of-way, or easement. Burning or burying of waste material is not permitted.
2. HAZARDOUS, UNIVERSAL, AND NON-HAZARDOUS WASTES: Manage hazardous, universal, and non-hazardous wastes in accordance with State and Federal regulations.
3. USED OIL: Used oil generated from the Contractor activities shall be managed in accordance with used oil regulations.
4. RECYCLABLE MATERIAL: Reduce wastes, including excess Western material, by recycling, reusing, or reprocessing. Examples of recycling, reusing, or reprocessing include reprocessing of solvents; recycling cardboard; and salvaging scrap metals.
5. REFRIGERANTS AND RECEIPTS: Refrigerants from air conditioners, water coolers, refrigerators, ice machines and vehicles shall be reclaimed with certified equipment operated by certified technicians if the item is to be disposed. Refrigerants shall be reclaimed and not vented to the atmosphere. A receipt from the reclaiming stating that the refrigerant was reclaimed, the amount and type of refrigerant, and the date shall be submitted to the COR after completion and prior to submittal of final invoice.
6. HALONS: Equipment containing halons that must be tested, maintained, serviced, repaired, or disposed must be handled according to EPA requirements and by technicians trained according to those requirements.
7. SULFUR HEXAFLUORIDE (SF<sub>6</sub>): SF<sub>6</sub> shall be reclaimed and not vented to the atmosphere.
8. WASTE MATERIAL QUANTITY REPORT: Submit quantities of total project waste material disposal as listed below to the COR after completion and prior to submittal of final invoice.
  - (1) Sanitary Wastes: Volume in cubic yards or weight in pounds.
  - (2) Hazardous or Universal Wastes: Weight in pounds.
  - (3) PCB Wastes: Weight in pounds.
  - (4) Other regulated wastes (e.g., lead-based paint or asbestos): Weight in pounds (specify type of waste in report).

## **STANDARD 13 - ENVIRONMENTAL QUALITY PROTECTION**

### **SECTION 13.9--CONTRACTOR'S LIABILITY FOR REGULATED MATERIAL INCIDENTS**

1. **GENERAL:** The Contractor is solely liable for all expenses related to spills, mishandling, or incidents of regulated material attributable to his actions or the actions of his subcontractors. This includes all response, investigation, cleanup, disposal, permitting, reporting, and requirements from applicable environmental regulation agencies.
2. **SUPERVISION:** The actions of the Contractor employees, agents, and subcontractors shall be properly managed at all times on Western property or while transporting Western's (or previously owned by Western) regulated material and equipment.

## STANDARD 13 - ENVIRONMENTAL QUALITY PROTECTION

### SECTION 13.10--POLLUTANT SPILL PREVENTION, NOTIFICATION, AND CLEANUP

1. **GENERAL:** Provide measures to prevent spills of pollutants and respond appropriately if a spill occurs. A pollutant includes any hazardous or non-hazardous substance that when spilled, will contaminate soil, surface water, or ground water. This includes any solvent, fuel, oil, paint, pesticide, engine coolants, and similar substances.
2. **SPILL PREVENTION NOTIFICATION AND CLEANUP PLAN (Plan):** Provide the Plan to the COR for approval 14 days prior to start of work. Approval of the plan is for the purpose of determining compliance with the specifications only and shall not relieve the Contractor of the responsibility for compliance with all Federal, State, and Local regulations. Include the following in the Plan:
  - (1) **Spill Prevention measures.** Describe the work practices or precautions that will be used at the job site to prevent spills. These may include engineered or manufactured techniques such as installation of berms around fuel and oil tanks; Storage of fuels, paints, and other substances in spill proof containers; and management techniques such as requiring workers to handle material in certain ways.
  - (2) **Notification.** Most States and the Environmental Protection Agency require by regulation, that anyone who spills certain types of pollutants in certain quantities notify them of the spill within a specific time period. Some of these agencies require written follow up reports and cleanup reports. Include in the Plan, the types of spills for which notification would be made, the agencies notified, the information the agency requires during the notification, and the telephone numbers for notification.
  - (3) **Employee Awareness Training.** Describe employee awareness training procedures that will be implemented to ensure personnel are knowledgeable about the contents of the Plan and the need for notification.
  - (4) **Commitment of Manpower, Equipment and Material.** Identify the arrangements made to respond to spills, including the commitment of manpower, equipment and material.
  - (5) If applicable, address all requirements of 40CFR112 pertaining to Spill Prevention, Control and Countermeasures Plans.
3. **TANKER OIL SPILL PREVENTION AND RESPONSE PLAN:** Provide a Tanker Oil Spill Prevention and Response Plan as required by the Department of Transportation if oil tankers with volume of 3,500 gallons or more are used as part of the project. Submit the Tanker Oil Spill Prevention and Response Plan to the COR for approval 14 days prior to start of work. Approval of the plan is for the purpose of determining compliance with the specifications only and shall not relieve the Contractor of the responsibility for compliance with all Federal, State, and Local regulations.

## STANDARD 13 - ENVIRONMENTAL QUALITY PROTECTION

### SECTION 13.11--PESTICIDES

1. GENERAL: The term "pesticide" includes herbicides, insecticides, rodenticides and fungicides. Pesticides shall only be used in accordance with their labeling and applied by appropriately certified applicators.
2. ENVIRONMENTAL PROTECTION AGENCY REGISTRATION: Use EPA registered pesticides that are approved for the intended use.
3. PESTICIDE USE PLAN: The plan shall contain: 1) a description of the pesticide to be used, 2) where it is to be applied, 3) the application rate, 4) a copy of the label, and 5) a copy of required applicator certifications. Submit two copies of the pesticide use plan to the COR for approval 14 days prior to the date of intended application. Approval of the plan is for the purpose of determining compliance with the specifications only and shall not relieve the Contractor of the responsibility for compliance with all Federal, State, and Local regulations. Within seven days after application, submit a written report, including the pesticide applicators report, in accordance with Standard 2 – Sitework, Section 2.1.1.5, "Soil-Applied Herbicide".

## **STANDARD 13 - ENVIRONMENTAL QUALITY PROTECTION**

### **SECTION 13.12--TREATED WOOD POLES AND MEMBERS RECYCLING OR DISPOSAL**

Whenever practicable, treated wood poles and members removed during the project shall be recycled or transferred to the public for some uses. Treated wood poles and members transferred to a recycler, landfill, or the public shall be accompanied by a written consumer information sheet on treated wood as provided by Western. Obtain a receipt form, part of the consumer information sheet, from the recipient indicating that they have received, read, and understand the consumer information sheet. Treated wood products transferred to right-of-way landowners shall be moved off the right-of-way. Treated wood product scrap or poles and members that cannot be donated or reused shall be properly disposed in a landfill that accepts treated wood and has signed Western's consumer information sheet receipt. Submit treated wood pole and members consumer receipt forms to the COR after completion and prior to submittal of final invoice.

## **STANDARD 13 - ENVIRONMENTAL QUALITY PROTECTION**

### **SECTION 13.13--PREVENTION OF AIR POLLUTION**

1. **GENERAL:** Ensure that construction activities and the operation of equipment are undertaken to reduce the emission of air pollutants. Submit a copy of permits, if required, from Federal, State, or local agencies to the COR 14 days prior to the start of work.
2. **MACHINERY AIR EMISSIONS:** The Contractor and subcontractor machinery shall have, and shall use the air emissions control devices required by Federal, State or Local Regulation or ordinance.
3. **DUST ABATEMENT:** Dust shall be controlled. Oil shall not be used as a dust suppressant. Dust suppressants shall be approved by the COR prior to use.

## STANDARD 13 - ENVIRONMENTAL QUALITY PROTECTION

### SECTION 13.14--HANDLING AND MANAGEMENT OF ASBESTOS CONTAINING MATERIAL

1. GENERAL: Obtain the appropriate Federal, State, Tribal or local licenses or certifications prior to disturbing any regulated asbestos-containing material. If a building or portion of a building will be demolished or renovated, obtain an Asbestos Notice of and Permit for Demolition and Renovation from the State or Tribal Department of Environmental Quality, Division of Air Quality (or equivalent). The building(s) shall be inspected by a State-Certified or Tribal accepted Asbestos Building Inspector and the inspector shall certify the presence and condition of asbestos on site as directed on the State or Tribal Demolition and Renovation Notice/Permit. The inspections shall be performed and notifications shall be submitted whether asbestos is present or not. Submit a copy of licenses, certifications, Demolition and Renovation Notifications and Permits for asbestos work to the COR 14 days prior to work. Ensure: 1) worker and public safety requirements are fully implemented and 2) proper handling, transportation, and disposal of asbestos containing material.
2. TRANSPORTATION OF ASBESTOS WASTE: Comply with Department of Transportation, Environmental Protection Agency, and State and Local requirements when transporting asbestos wastes.
3. CERTIFICATES OF DISPOSAL AND RECEIPTS: Obtain certificates of disposal for waste if the waste is a hazardous waste or receipts if the waste is a non-hazardous waste. Submit copies to the COR after completion and prior to submittal of final invoice.



## STANDARD 13 - ENVIRONMENTAL QUALITY PROTECTION

### SECTION 13.15--MATERIAL WITH LEAD-BASED PAINT

1. GENERAL: Comply with all applicable Federal, State and local regulations concerning work with lead-based paint, disposal of material painted with lead-based paint, and management of these material. OSHA and General Industry Standards apply to worker safety and right-to-know issues. Federal EPA and State agencies regulate waste disposal and air quality issues.
2. TRANSFER OF PROPERTY: If lead-based paint containing equipment or material is to be given away or sold for reuse, scrap, or reclaiming, a written notice shall be provided to the recipient of the material stating that the material contains lead-based paint and the Hazardous Waste regulations may apply to the waste or the paint in some circumstances. The new owner must also be notified that they may be responsible for compliance with OSHA requirements if the material is to be cut, sanded, abraded, or stripped of paint. Submit a copy of lead paint notices to the COR upon completion and prior to submittal of final invoice.
3. CERTIFICATES OF DISPOSAL AND RECEIPTS: Obtain certificate of disposals for waste if the waste is a hazardous waste or receipts if the waste is a non-hazardous waste. Submit copies to the COR after completion and prior to submittal of final invoice.

## STANDARD 13 - ENVIRONMENTAL QUALITY PROTECTION

### SECTION 13.16--PREVENTION OF WATER POLLUTION

1. GENERAL: Ensure that surface and ground water is protected from pollution caused by construction activities and comply with applicable regulations and requirements. Ensure that streams, waterways and other courses are not obstructed or impaired unless the appropriate Federal, State or local permits have been obtained.
2. PERMITS: Ensure that:
  - (1) A National Pollutant Discharge Elimination System (NPDES) permit is obtained from the US Environmental Protection Agency or State as appropriate if the disturbed construction area equals 1 acre or more. Disturbed areas include staging, parking, fueling, stockpiling, and any other construction related activities. Refer to [www.epa.gov/npdes/stormwater](http://www.epa.gov/npdes/stormwater) for directions and forms.
  - (2) A dewatering permit is obtained from the appropriate agency if required for construction dewatering activities.
  - (3) Copies of permits and plans, approved by the appropriate regulating agencies, are submitted to the COR 14 days prior to start of work.
3. EXCAVATED MATERIAL AND OTHER CONTAMINANT SOURCES: Control runoff from excavated areas and piles of excavated material, construction material or wastes (to include truck washing and concrete wastes), and chemical products such as oil, grease, solvents, fuels, pesticides, and pole treatment compounds. Excavated material or other construction material shall not be stockpiled or deposited near or on streambanks, lake shorelines, ditches, irrigation canals, or other areas where run-off could impact the environment.
4. MANAGEMENT OF WASTE CONCRETE OR WASHING OF CONCRETE TRUCKS: Do not permit the washing of concrete trucks or disposal of excess concrete in any ditch, canal, stream, or other surface water. Concrete wastes shall be disposed in accordance with all Federal, State, and local regulations. Concrete wastes shall not be disposed on any Western property, right-of-way, or easement; nor on any streets, roads, or property without the owner's consent.
5. STREAM CROSSINGS: Crossing of any stream or other waterway shall be done in compliance with Federal, State, and local regulations. Crossing of some waterways may be prohibited by landowners, State or Federal agencies or require permits.

## STANDARD 13 - ENVIRONMENTAL QUALITY PROTECTION

### SECTION 13.17--TESTING, DRAINING, REMOVAL, AND DISPOSAL OF OIL-FILLED ELECTRICAL EQUIPMENT

1. SAMPLING AND TESTING OF INSULATING OIL FOR PCB CONTENT: Sample and analyze the oil of electrical equipment (which includes storage tanks) for PCB's. Use analytical methods approved by EPA and applicable State regulations. Decontaminate sampling equipment according to documented good laboratory practices (these can be contractor developed or EPA standards). Use only laboratories approved by Western. The COR will furnish a list of approved laboratories.
2. PCB TEST REPORT: Provide PCB test reports that contain the information below for disposing of oil-filled electrical equipment. Submit the PCB test report prior to draining, removal, or disposal of oil or oil-filled equipment that is designated for disposal.
  - (1) Name and address of the laboratory.
  - (2) Description of the electrical equipment (e.g. transformer, breaker).
  - (3) Serial number for the electrical equipment.
  - (4) Date sampled.
  - (5) Date tested.
  - (6) PCB contents in parts per million (ppm).
  - (7) Unique identification number of container into which the oil was drained (i.e., number of drum, tank, tanker, etc.)
3. OIL CONTAINING PCB: Comply with the Federal regulations pertaining to PCBs found at Title 40, Part 761 of the U.S. Code of Federal Regulations (40 CFR 761).
4. REMOVAL AND DISPOSAL OF INSULATING OIL AND OIL-FILLED ELECTRICAL EQUIPMENT: Once the PCB content of the oil has been identified from laboratory results, the oil shall be transported and disposed, recycled, or reprocessed according to 40 CFR 761 (if applicable), Resource Conservation and Recovery Act (RCRA) ~~used oil~~, and other applicable regulations. Used oil may be transported only by EPA-registered used oil transporters. The oil must be stored in containers that are labeled ~~Used Oil~~. Use only U.S. transporters and disposal sites approved by Western.
5. OIL AND OIL-FILLED ELECTRICAL EQUIPMENT RECEIPT: Obtain and submit a receipt for oil and oil-filled equipment transported and disposed, recycled, or reprocessed to the COR upon completion and prior to submittal of final invoice.

## STANDARD 13 - ENVIRONMENTAL QUALITY PROTECTION

### SECTION 13.18--REMOVAL OF OIL-CONTAMINATED MATERIAL

1. GENERAL: Removing oil-contaminated material includes excavating, stockpiling, testing, transporting, cleaning, and disposing of these material. Personnel working with PCBs shall be trained in accordance with OSHA requirements. Submit employee training documentation records to the COR 14 days prior to the start of work.
2. CLEANUP WORK MANAGEMENT PLAN: Provide a Cleanup Work Management Plan that has been approved by applicable Federal, State, or Local environmental regulation agencies. Submit the plan to the COR for approval 14 days prior to the start of work. Approval of the plan is for the purpose of determining compliance with the specifications only and shall not relieve the Contractor of the responsibility for compliance with all Federal, State, and Local regulations. The plan shall address on-site excavation of contaminated soil and debris and include the following:
  - (1) Identification of contaminants and areas to be excavated.
  - (2) Method of excavation.
  - (3) Level of personnel/subcontractor training.
  - (4) Safety and health provisions.
  - (5) Sampling requirements including quality control, laboratory to be used.
  - (6) Management of excavated soils and debris.
  - (7) Disposal methods, including transportation to disposal.
3. EXCAVATION AND CLEANUP: Comply with the requirements of Title 40, Part 761 of the U.S. Code of Federal Regulations (40 CFR 761).
4. TEMPORARY STOCKPILING: Excavated material, temporarily stockpiled on site, shall be stored on heavy plastic and covered to prevent wind and rain erosion at a location designated by the COR.
5. SAMPLING AND TESTING: Sample contaminated debris and areas of excavation to ensure that contamination is removed. Use personnel with experience in sampling and, in particular, with experience in PCB cleanup if PCBs are involved. Use analytical methods approved by EPA and applicable State regulations.
6. TRANSPORTION AND DISPOSAL OF CONTAMINATED MATERIAL: The Contractor shall be responsible and liable for the proper loading, transportation, and disposal of contaminated material according to Federal, State, and local requirements. Use only U.S. transporters and disposal sites approved by Western.
7. POST CLEANUP REPORT: Provide a Post-Cleanup Report that describes the cleanup of contaminated soils and debris. Submit the report to the COR upon completion and prior to submittal of final invoice. The report shall contain the following information:
  - (1) Site map showing the areas cleaned.
  - (2) Description of the operations involved in excavating, storing, sampling, and testing, and disposal.
  - (3) - Sampling and analysis results including:
    - 1) Name and address of the laboratory;
    - 2) sample locations;
    - 3) sample dates;
    - 4) analysis dates;
    - 5) contents of contaminant (e.g., PCB or total petroleum hydrocarbons) in parts per million (ppm).

## **STANDARD 13 - ENVIRONMENTAL QUALITY PROTECTION**

- (4) Certification by the Contractor that the cleanup requirements were met.
- (5) Copies of any manifests, bills of lading, and disposal certificates.
- (6) Copies of correspondence with regulatory agencies that support completion of the cleanup.

## STANDARD 13 - ENVIRONMENTAL QUALITY PROTECTION

### SECTION 13.19--CONSERVATION OF NATURAL RESOURCES

1. GENERAL: Federal law prohibits the taking of endangered, threatened, proposed or candidate wildlife and plants, and destruction or adverse modification of designated Critical Habitat. Federal law also prohibits the taking of birds protected by the Migratory Bird Treaty Act, and the Bald and Golden Eagle Protection Act. "Take" means to pursue, hunt, shoot, wound, kill, trap, capture or collect a protected animal or any part thereof, or attempt to do any of those things. The Contractor will take reasonable precaution to avoid harming other wildlife species. Contractor must always stay within Western's right-of-way and/or easement.
2. KNOWN OCCURRENCE OF PROTECTED SPECIES OR HABITAT: Following issuance of the notice to proceed, and prior to the start of construction, Western will provide training to all contractor and subcontractor personnel involved in the construction activity. Untrained personnel shall not be allowed in the construction area. Western will provide two sets of plan and profile drawings showing sensitive areas located on or immediately adjacent to the transmission line right-of-way and/or facility. These areas shall be considered avoidance areas. Prior to any construction activity, the avoidance areas shall be marked on the ground in a manner approved by the COR. If access is absolutely necessary, the contractor shall first obtain permission from the COR, noting that a Western and/or other government or tribal agency biologist may be required to accompany personnel and equipment. Ground markings shall be maintained through the duration of the contract. Western will remove the markings during or following final inspection of the project.
3. UNKNOWN OCCURRENCE OF PROTECTED SPECIES OR HABITAT: If evidence of a protected species is found in the project area, the contractor shall immediately notify the COR and provide the location and nature of the findings. The contractor shall stop all activity in the vicinity of the protected species or habitat and not proceed until directed to do so by the COR.