

Chilocco Wind Park

Cherokee Nation (other nations as well)

Cherokee Nation Businesses, LLC

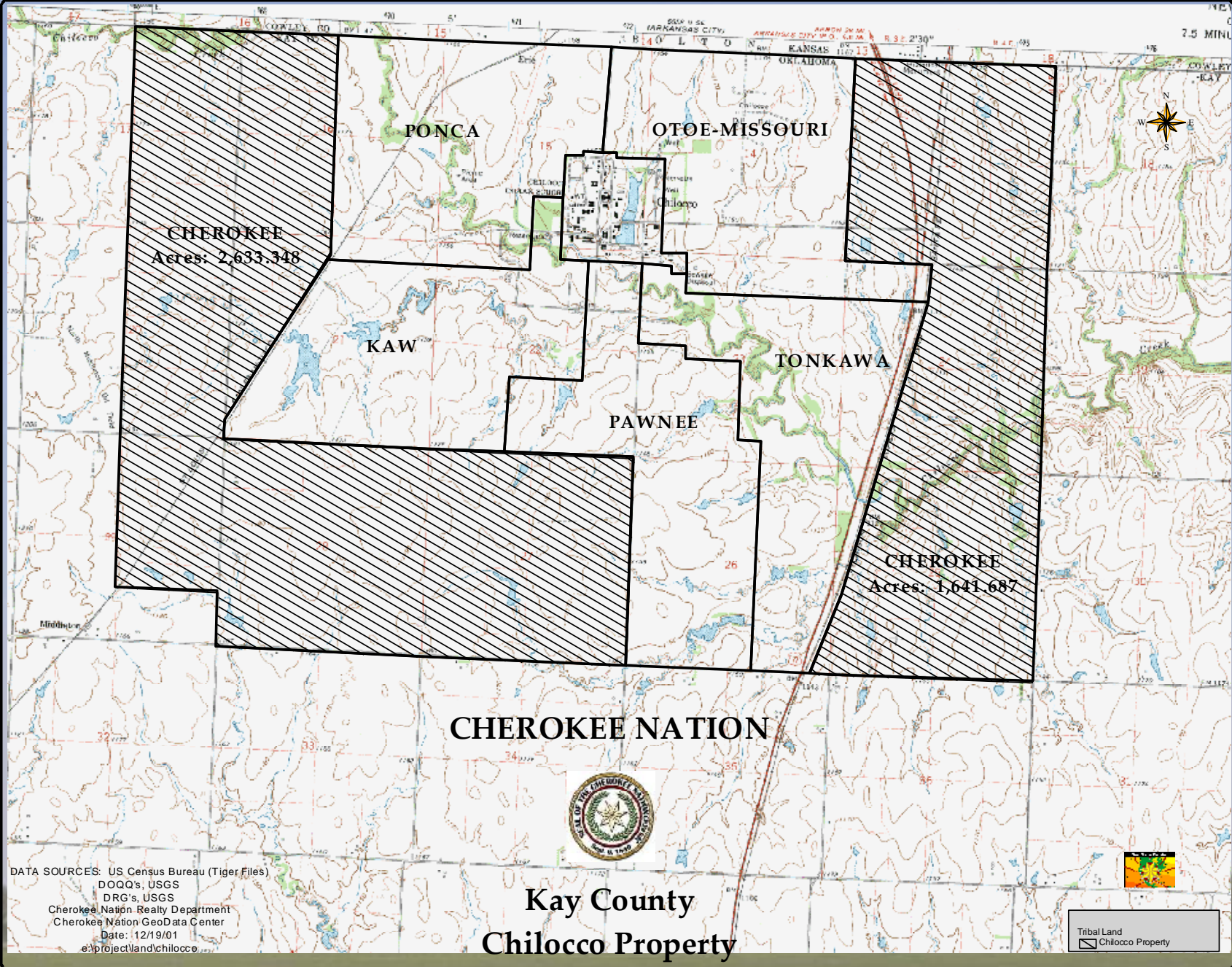
And

PNE Wind



Cherokee Chilocco Wind North Central Oklahoma Location





CHEROKEE
Acres: 2,633,348

PONCA

OTOE-MISSOURI

KAW

PAWNEE

TONKAWA

CHEROKEE
Acres: 1,641,687

CHEROKEE NATION

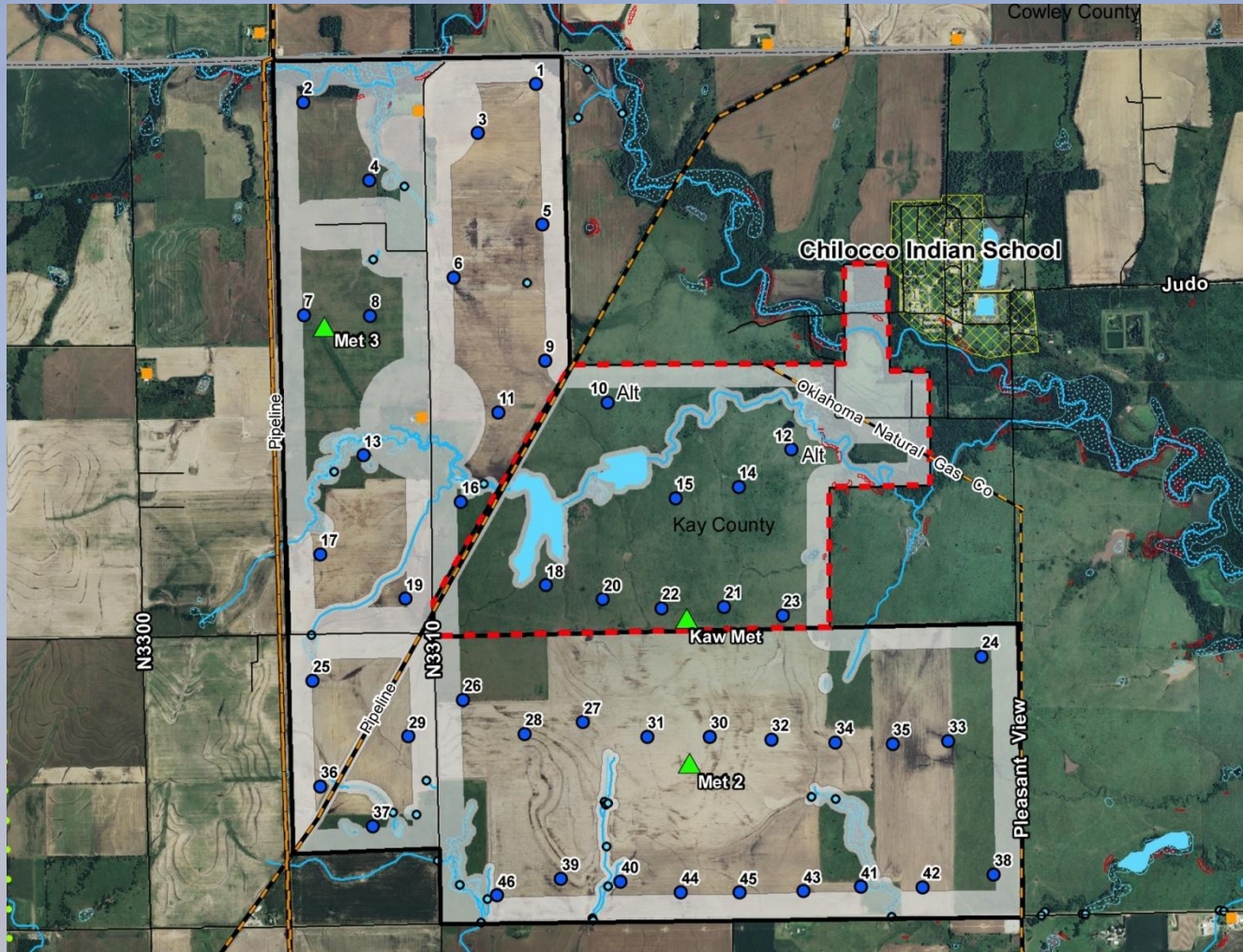


Kay County
Chilocco Property

DATA SOURCES: US Census Bureau (Tiger Files)
DOQQ's, USGS
DRG's, USGS
Cherokee Nation Realty Department
Cherokee Nation GeoData Center
Date: 12/19/01
e:\project\land\chilocco

Tribal Land
Chilocco Property

Turbine Layout



Cherokee Wind



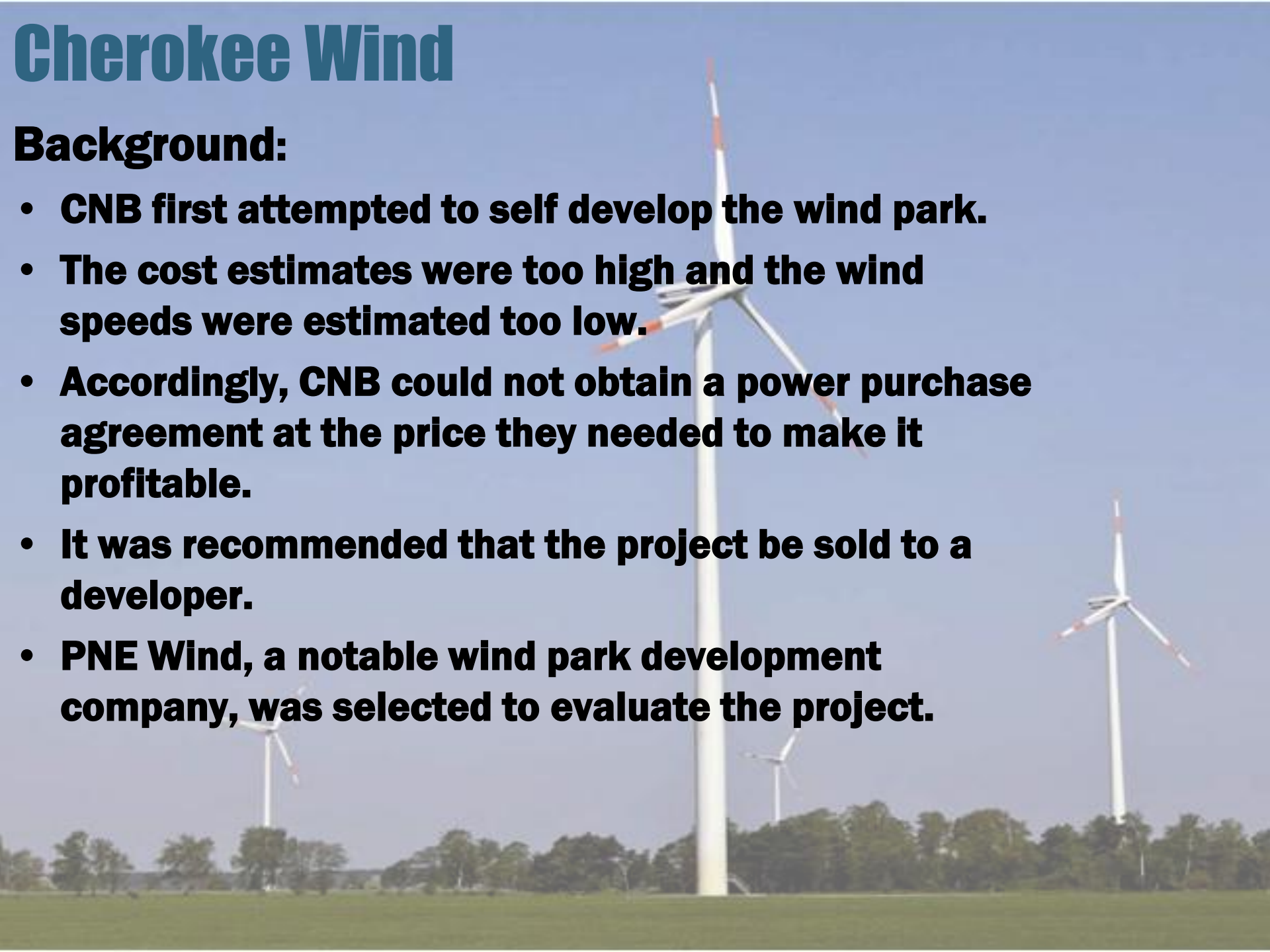
Status of Area Tribes:

- **Ponca – Their land would be a possible site for two turbines but they have not been approached. They previously expressed no interest.**
- **Otoe - Missouri – They have expressed an interest but their land is not suitable.**
- **Kaw – Their land is desirable for 8 to 9 turbines. They have been approached and have agreed.**
- **Pawnee – Their land would be a possible site for two turbines but they have not been approached. They previously expressed no interest.**
- **Tonkawa – Their land is not suitable and they have expressed no interest.**

Cherokee Wind

Background:

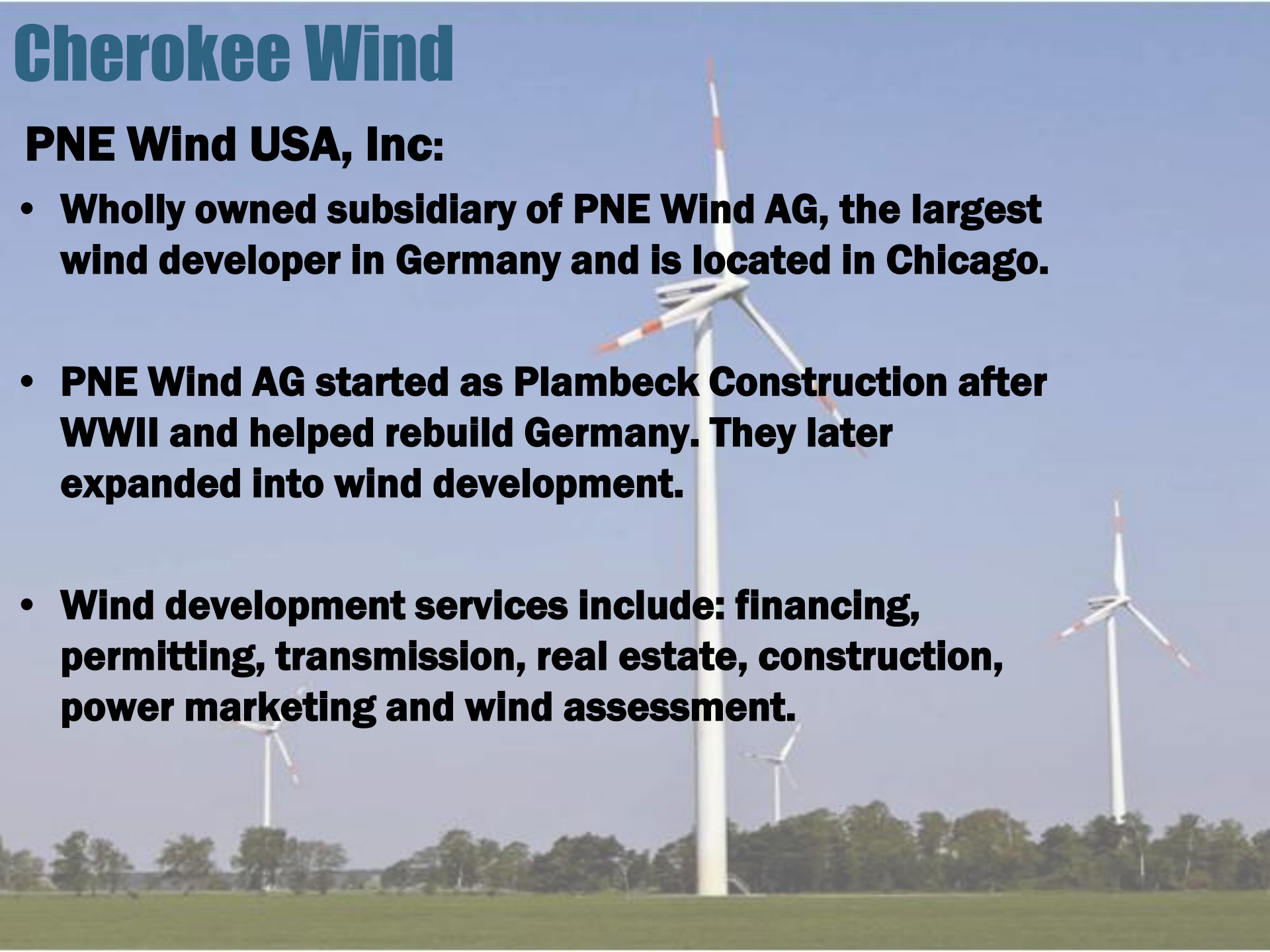
- **CNB first attempted to self develop the wind park.**
- **The cost estimates were too high and the wind speeds were estimated too low.**
- **Accordingly, CNB could not obtain a power purchase agreement at the price they needed to make it profitable.**
- **It was recommended that the project be sold to a developer.**
- **PNE Wind, a notable wind park development company, was selected to evaluate the project.**



Cherokee Wind

PNE Wind USA, Inc:

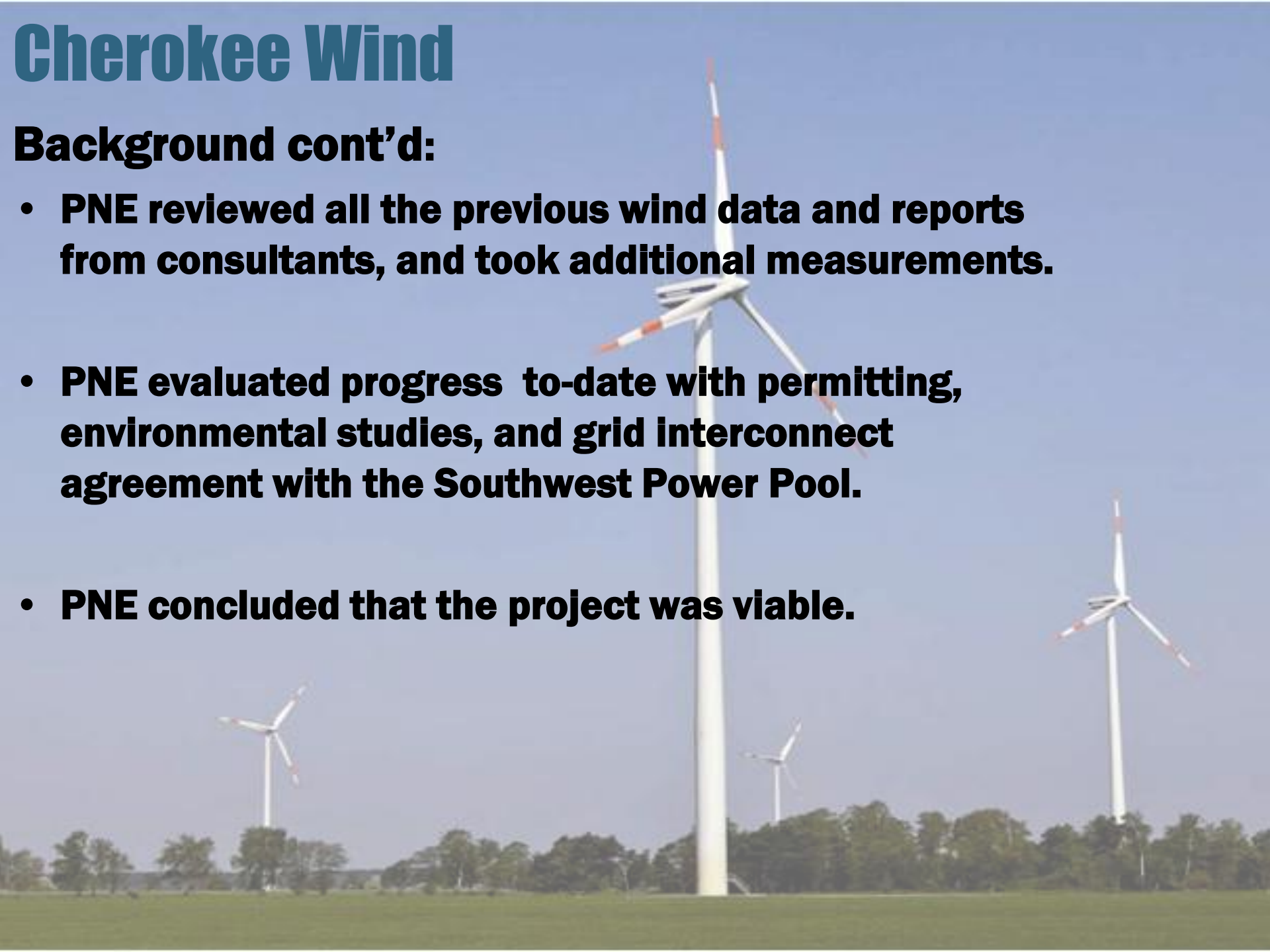
- **Wholly owned subsidiary of PNE Wind AG, the largest wind developer in Germany and is located in Chicago.**
- **PNE Wind AG started as Plambeck Construction after WWII and helped rebuild Germany. They later expanded into wind development.**
- **Wind development services include: financing, permitting, transmission, real estate, construction, power marketing and wind assessment.**



Cherokee Wind


Background cont'd:

- **PNE reviewed all the previous wind data and reports from consultants, and took additional measurements.**
- **PNE evaluated progress to-date with permitting, environmental studies, and grid interconnect agreement with the Southwest Power Pool.**
- **PNE concluded that the project was viable.**



Cherokee Wind

Remaining Issues to Resolve During 2012 :

- **Land Leases – Cherokee, Kaw/ Apex, BIA approval**
 - **Cherokee Nation to put land into trust**
 - **Finalize PNE/CNB contract**
 - **Finalize power purchase agreement**
 - **Term Sheet**
 - **Final Permitting**
 - **Financial Closing**
 - **Supply Agreements**
 - **Begin Construction**
- 
- A photograph of a wind farm with several white wind turbines in a green field under a clear blue sky. The turbines are spaced out across the landscape, with one prominent in the foreground and others receding into the distance. The sky is a uniform light blue, and the ground is a flat, green field.