



SAVANNAH RIVER SITE - CITIZENS ADVISORY BOARD
GEORGIA AND SOUTH CAROLINA CITIZENS WORKING TOGETHER FOR A BETTER TOMORROW AT SRS

**A Component of the Department of Energy's Environmental Management
Site-Specific Advisory Board**

**The Savannah River Site
Citizens Advisory Board**

Welcome to EMAB

*Dr. Donald Bridges, Chair
SRS CAB*



Savannah River Site Citizens Advisory Board

- The SRS CAB is pleased to welcome a sister EM Advisory Board to SRS.
- As a part of this welcome I would like to give you a little background on SRS CAB and our Issues.



Background on SRS CAB

- ▶ Our Board has typically focused on two aspects of cleanup.
 - Cleanup Priorities
 - Progress of Cleanup
- ▶ SRS CAB has 25 members from diverse backgrounds representing SC/Georgia.
- ▶ Robust Involvement by the Community in CAB membership/activities.



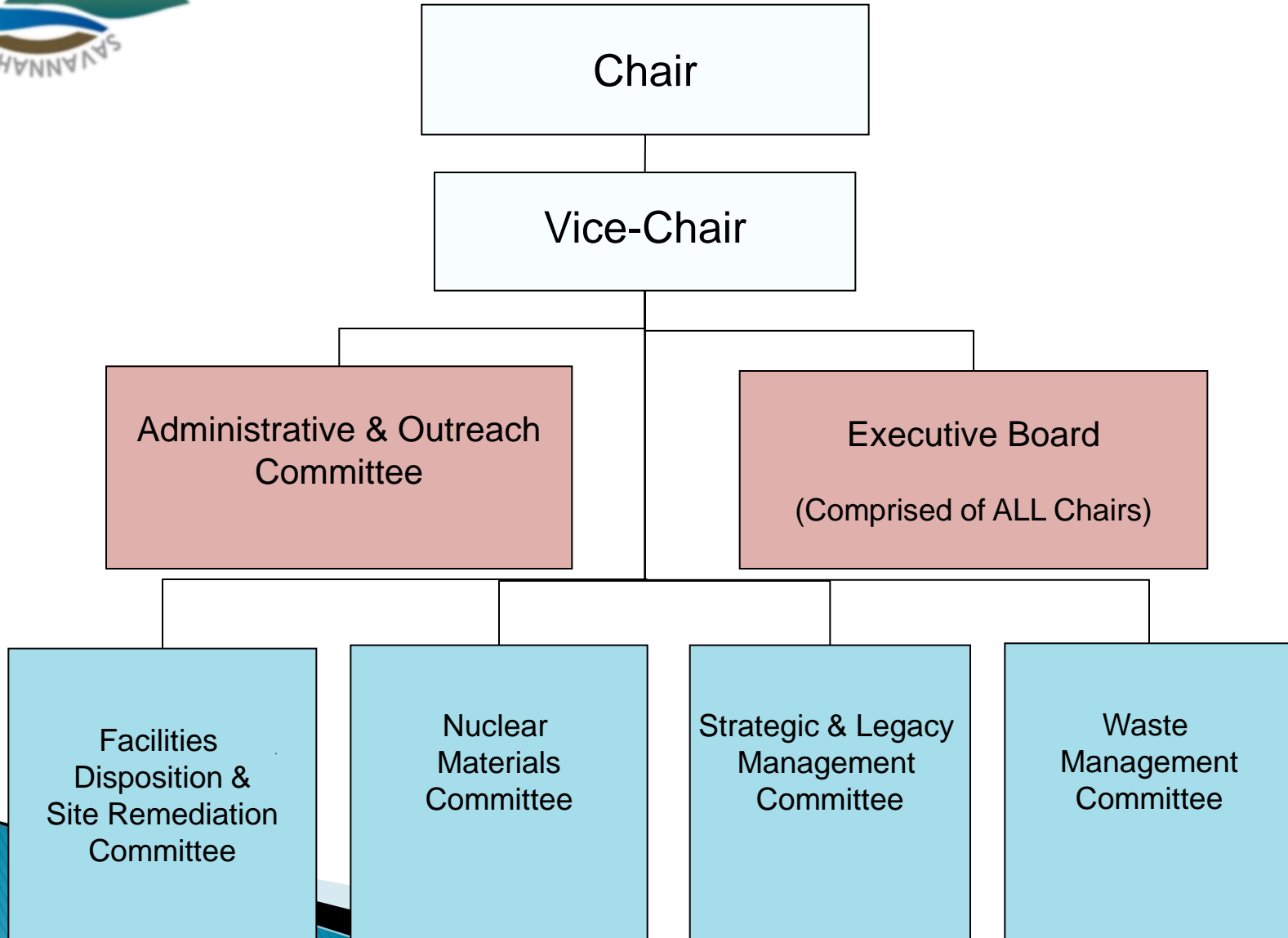
Who Are We?

The SRS CAB is one of eight advisory board components under the DOE Environmental Management Site- Specific Advisory Board.





CAB Organization: Four Issues-Based Committees



SRS Cleanup: A Perspective

- ▶ SRS Cleanup is a massive effort
- ▶ Estimated to Cost on the order of \$80B.
- ▶ Approx. 40 year effort (mid-1990s to 2030s)
- ▶ Scope includes:
 - Stabilization of Liquid radioactive waste for removal from SRS.
 - Removal of radioactive waste from SRS & some waste burial.
 - Removal of some nuclear materials from SRS.
 - Removal of certain chemicals from ground.



SRS is still a very active Site



L-Basin SNF Wet Storage Pool



Legacy High Waste Cleanup



Transuranic Waste Disposition



H-Canyon



How Do We Operate?

- Seek and receive information early in the decision-making process
- Provide informed, timely recommendations to DOE, in collaboration with EPA and SCDHEC
- Provide an opportunity for public involvement
- Share the insight we gain with our neighbors





Recommendations the CAB has Adopted

Since the SRS CAB Formation in 1994 we have generated more than 300 recommendations in areas such as:

- soil and groundwater remediation
- transuranic waste
- nuclear waste
- prioritization of work within budget constraints
- storage and disposition of surplus plutonium
- spent fuel management and chemical processing
- H-Canyon capabilities
- waste tank closures

Major Issues

- ▶ Dealing with Site Cleanup with an increasingly limited and uncertain budget. (FY 2013/FY 2014)
- ▶ Delay- Salt Waste Processing Facility
 - Major Facility needed to process 37 M gal High Level Waste
 - Needed to get waste into Defense Waste Processing Facility (DWPF) waste canisters
 - Delay will likely be several years
- ▶ Uncertainty on Processing of Spent Nuclear Fuel being received at SRS.
 - Spent Nuclear Fuel is being received now at SRS.
 - Potential storage of fuel for many years.
 - Limited disposition planned.

Major Issues (Cont'd.)

- ▶ Utilization of H-Canyon Processing Capabilities.
 - Process Spent Nuclear Fuel On-Site (?)
 - Continued processing of Pu for disposition Off-Site.
 - Continued processing of Pu for input to MOX facility.
- ▶ Need some movement of SRS canisters to Off-Site Location.
 - Over 3,600 canisters now awaiting disposition.
 - Some canisters approaching 20 yrs at SRS.
 - Important to the Community at large.

Issues (Cont'd.)

- ▶ Potential Impact of Blue Ribbon Commission/DOE 2013 Strategy for Management of Spent Nuclear Fuel & High Level Radioactive Waste as relates to Interim Storage of Commercial Spent Nuclear Fuel.
 - SRS not involved in any such planning.
 - CAB not aware of any active plans.
 - CAB is aware of likely Site capabilities.
 - Any activity in this area will be of intense interest to community and could impact EM cleanup progress(?).

What Would the CAB Like to See?

- ▶ Continued Progress on Site Cleanup in logical manner (no facilities in hot standby without substantive production.)
- ▶ Emphasis on completion of Salt Waste Process. Facility to reduce major SRS risk at an early date.
- ▶ Utilization of Site Facilities for Cleanup to maximum capability (H-Canyon, DWPF).
- ▶ Emphasis on the use of Site Cleanup facilities for New Missions once Cleanup is completed.

Summary

- ▶ SRS has done a good job in managing a massive cleanup effort.
 - Cleanup is timely
 - Cleanup is being done to regulatory standards.
- ▶ Approximately 50% complete.
 - Over 20 years of remaining effort.
 - Many Billions of cost yet to be expended.
- ▶ There is a Need to Keep the Focus on Site Cleanup and Removal of Waste from SRS!