



Effect of the Composition of Hydrocarbon Streams on HCCI Performance

***Rafal Gieleciak,¹ Craig Fairbridge,¹ Darcy Hager,¹
Bruce Bunting,² Thomas Gallant³ and Ken Mitchell⁴***

¹ CanmetENERGY, ² Oak Ridge National Laboratory, ³ Pacific Northwest
National Laboratory, ⁴ Shell Canada

Introduction

- Evolving fuels and combustion strategies have resulted in advanced combustion engines that may have varying fuel quality appetites when compared to conventional engines
- At the same time, advanced analytical methods are becoming both more powerful and easier to use
 - Two examples are NMR and 2D-GC (two dimensional gas chromatography)
- Statistical analysis allows allow us to link the very complex fuel analysis data sets from these methods to fuel chemistry and properties and to engine performance
- Purpose of research covered in this presentation:
 - To apply an advanced statistical analysis technique to 2D-GC data for 17 oil sands derived fuels and correlate results to measured fuel chemical / physical properties, and then to HCCI engine performance

CanmetENERGY

Leadership in ecoInnovation



Natural Resources
Canada

Ressources naturelles
Canada

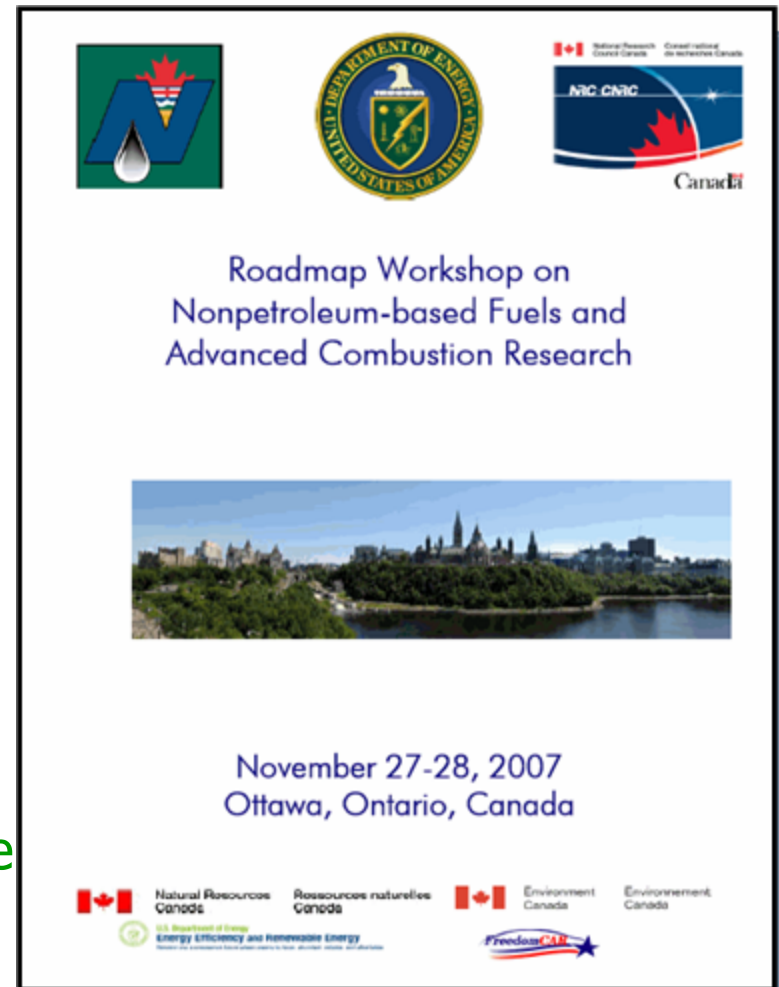
Canada

Background

Goal – identify knowledge gaps in using future fuels from all sources in advanced engines

1. Chemical analysis
2. Highly efficient clean combustion
3. Relationship between 1 and 2 above
4. Standard light petroleum derived fuels
5. Standard oil sands derived fuels
6. Typical compounds for surrogate fuels
7. Combustion-based performance measure

http://canmetenergy-canmetenergie.nrcan-rncan.gc.ca/eng/oil_sands/future_fuels_emissions.html



Natural Resources
Canada

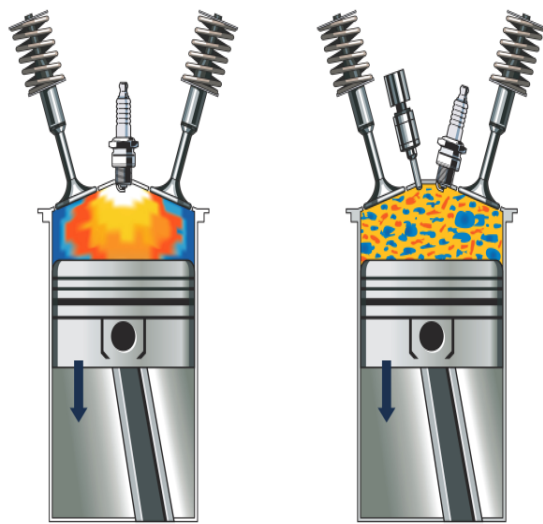
Ressources naturelles
Canada

Canada

Leadership in ecoInnovation

HCCI engine

Homogeneous Charge Compression Ignition



In the HCCI mode ignition occurs due to compression of the homogeneous fuel/air mixture. It is a simple platform for fuels research.

Advanced combustion strategies must satisfy the need for high efficiency, low emissions, and driveability.

It is not obvious which fuel chemical or physical properties are responsible for processes occurring during advanced combustion.

- 17 refinery streams consisting of finished fuels and process streams were obtained from oil sands derived crude oil
- The samples were characterized for chemical and physical properties and run in a simple premixed HCCI engine
- The intent was to study as wide a range of oil sands related fuel chemistry and properties as possible and to relate this information to HCCI engine performance
- In HCCI combustion, the engine preferred lower cetane number fuels with lower boiling points

SAE paper 2008-01-2406

CanmetENERGY

Leadership in ecoInnovation

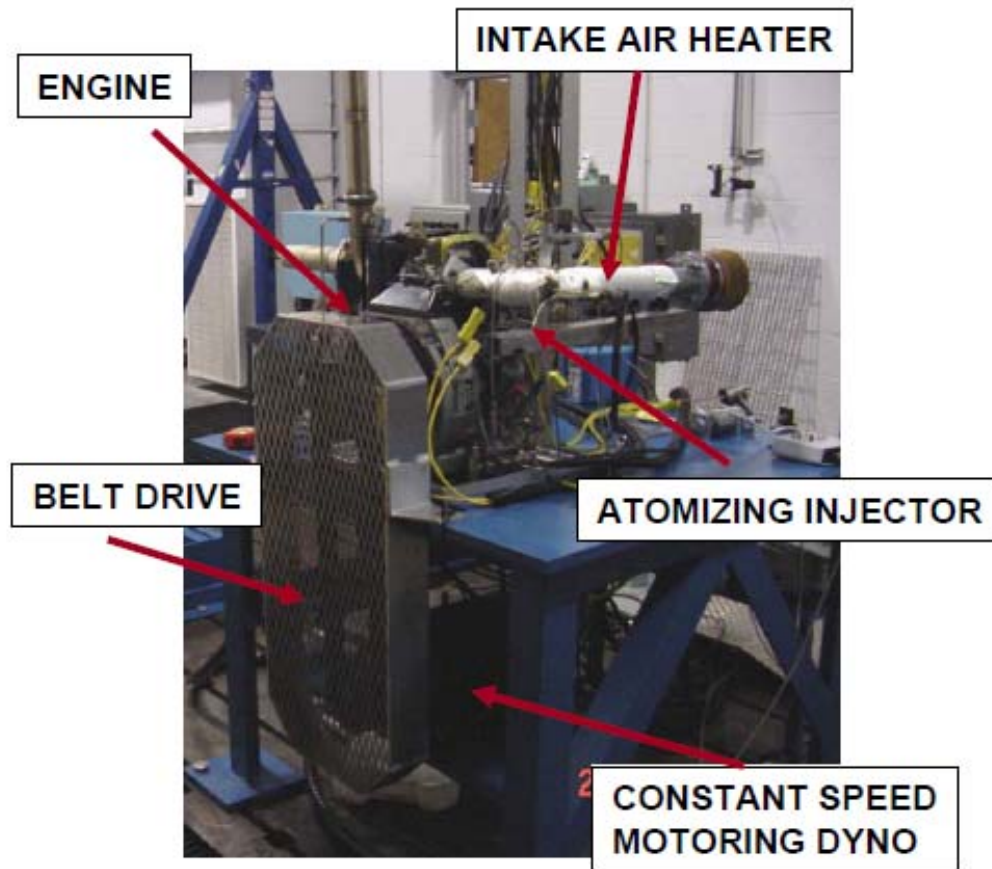


Natural Resources
Canada

Ressources naturelles
Canada

Canada

ORNL HCCI research engine



MODIFIED PISTON
WITH SPHERICAL
COMBUSTION BOWL

Engine Displacement (cc)	517
Bore (cm)	9.7
Stroke (cm)	7.0
Compression Ratio	10.5:1
Intake Valve Opening (CA deg)	710
Intake Valve Closing (CA deg)	218
Exhaust Valve Opening (CA deg)	499
Exhaust Valve Closing (CA deg)	20
Intake Air Temperature (°C)	30 - 400

CanmetENERGY

Leadership in ecoInnovation

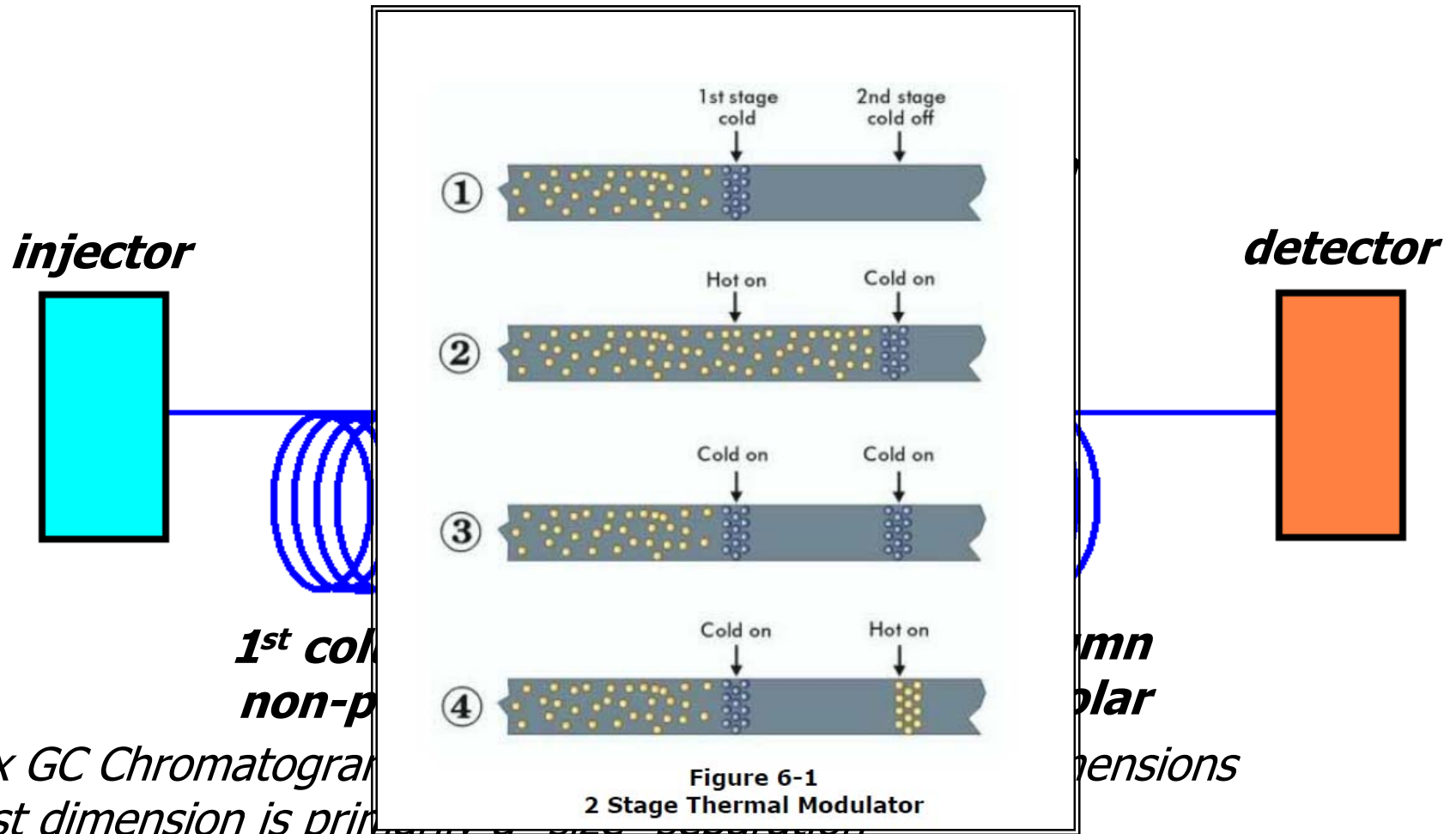
Canada



Natural Resources
Canada

Ressources naturelles
Canada

Two Dimensional Gas Chromatography



GC x GC Chromatogram

- first dimension is primarily a "polarity" separation
- second dimension is primarily a "polarity" separation

CanmetENERGY

Leadership in ecoInnovation

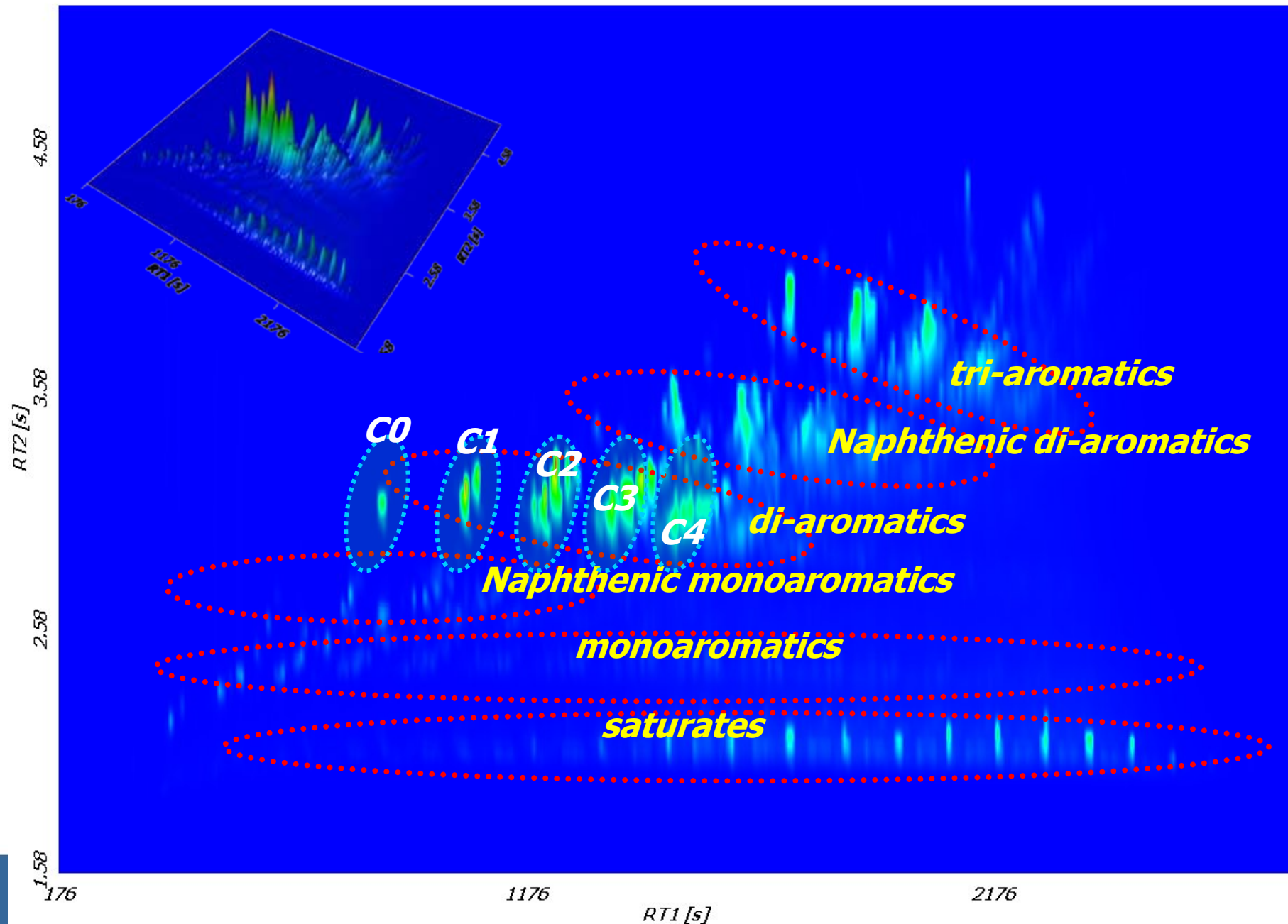


Natural Resources
Canada

Ressources naturelles
Canada

Canada

Two Dimensional Gas Chromatography



$Q(2d)RPR$

***Quantitative Two-Dimensional
Retention Property Relationship***

CanmetENERGY

Leadership in ecoInnovation



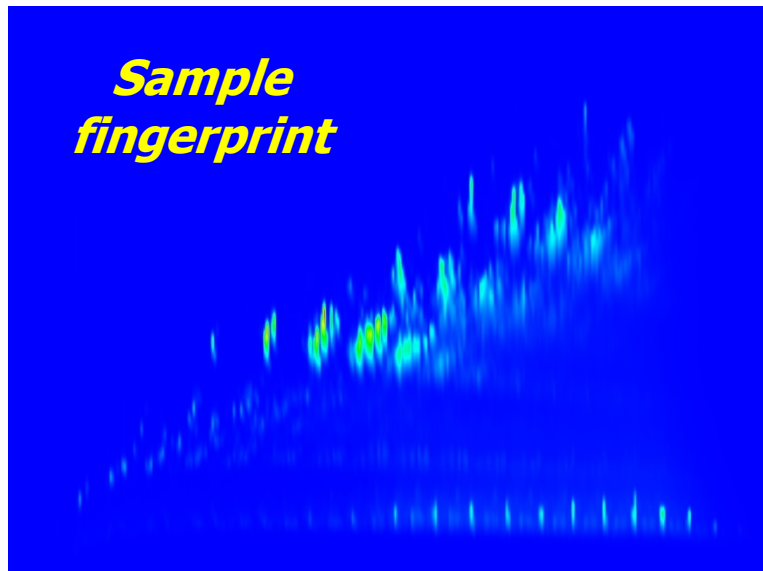
Natural Resources
Canada

Ressources naturelles
Canada

Canada

Q(2d)RPR

2D-GC chromatograms are fingerprints of petrochemical samples. These profiles describe the composition of hydrocarbon samples and can be treated as compositional variables which could describe bulk properties of the samples



|||



CanmetENERGY

Leadership in ecoInnovation



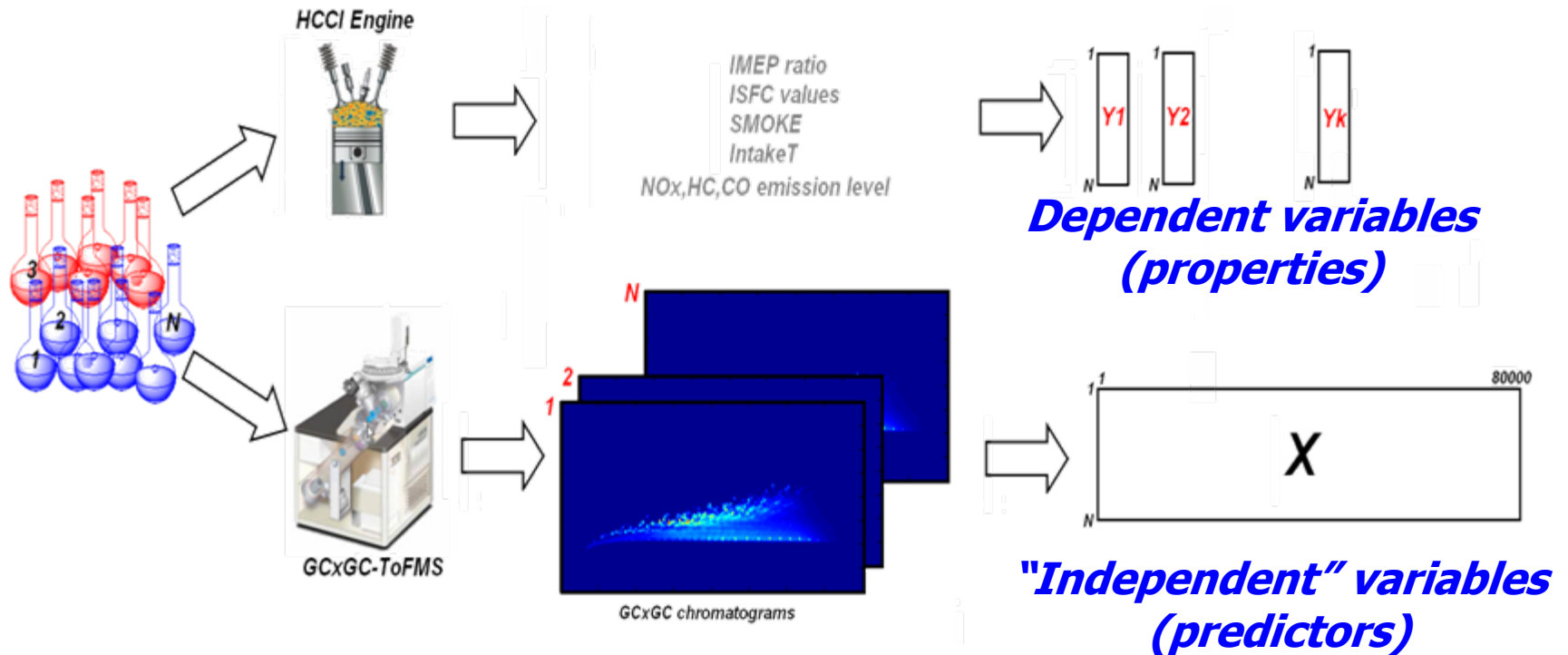
Natural Resources
Canada

Ressources naturelles
Canada

Canada

Q(2d)RPR How it works?

STEP 1: Data receiving



CanmetENERGY

Leadership in ecoInnovation



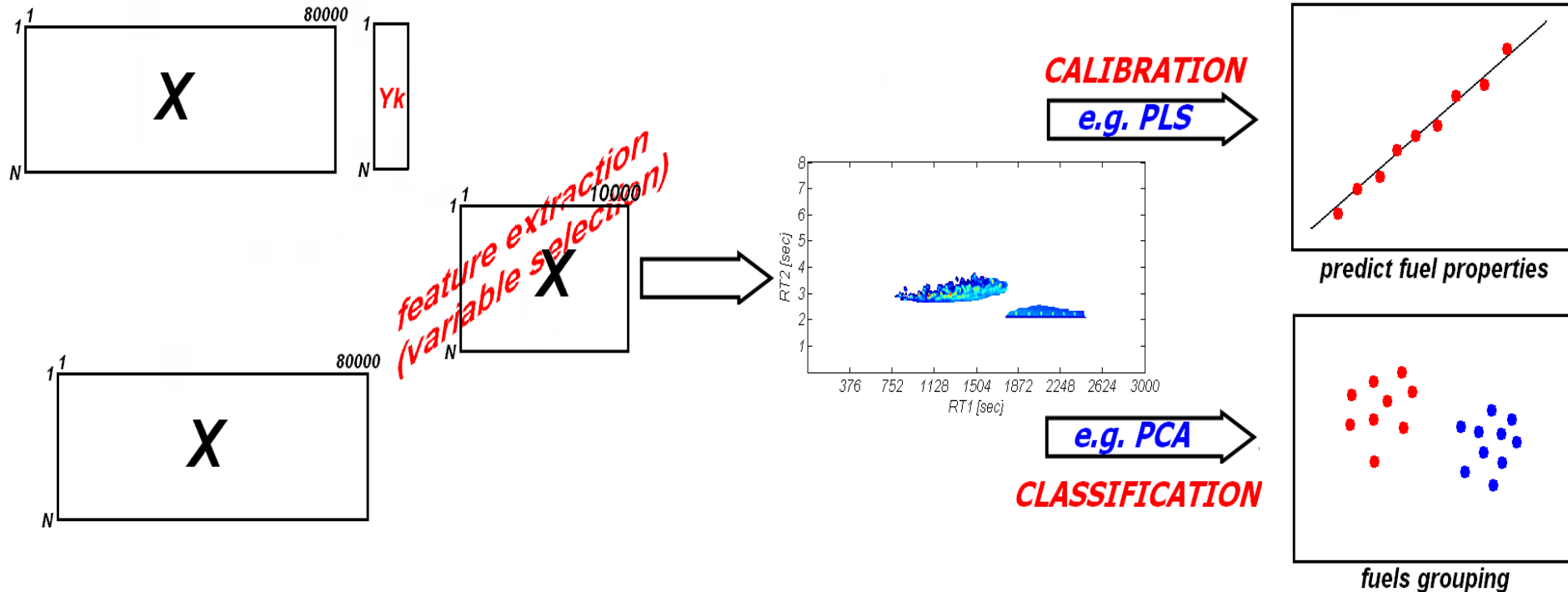
Natural Resources
Canada

Ressources naturelles
Canada

Canada

Q(2d)RPR How it works?

STEP 2: Q(2d)RPR Analysis



CanmetENERGY

Leadership in ecoInnovation

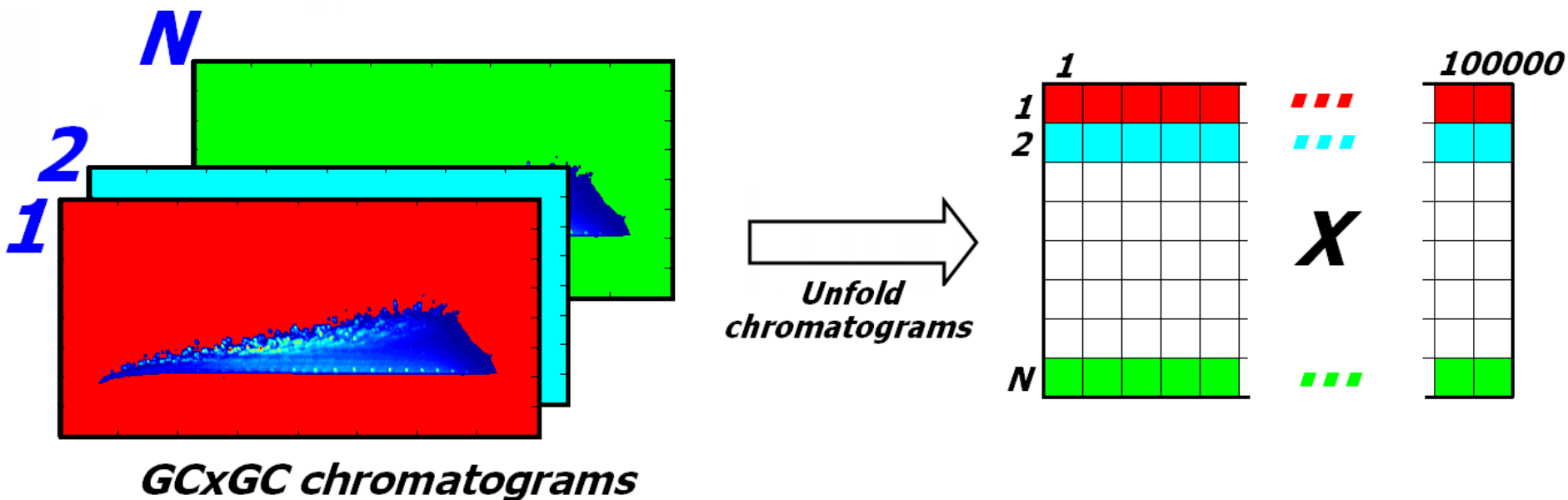


Natural Resources
Canada

Ressources naturelles
Canada

Canada

Q(2d)RPR How it works?



CanmetENERGY

Leadership in ecoInnovation



Natural Resources
Canada

Ressources naturelles
Canada

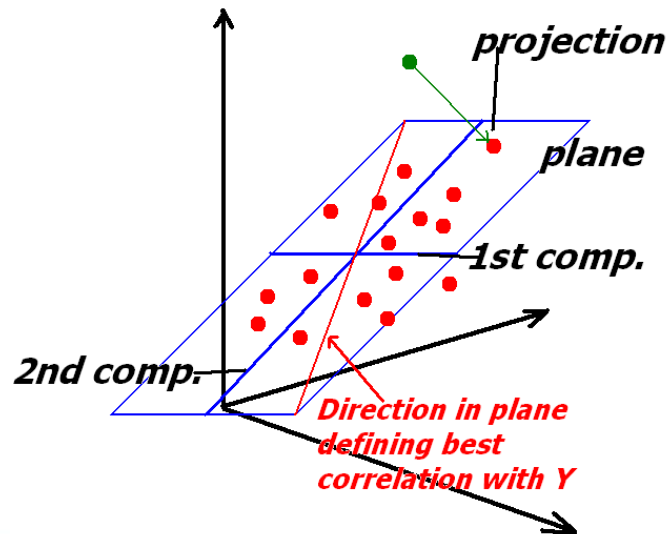
Canada

Projection to Latent Structures

PLS (Projection to Latent Structures) regression is a generalization of multiple linear regression (MLR) but unlike MLR, it can analyze data with strong collinear (correlated), noisy, and numerous X-variables and model the relationship between X and Y.

The linear PLS model finds “new” variables, a latent variables (**X-scores**). These scores are linear combination of the original variables and they have following properties: they are good predictors of Y, they are few in number and they are orthogonal.

PLS is a projection method and, thus has a simple geometric interpretation with a projection of the X matrix (a swarm of points in N-dimensional space) on to an A-dimensional hyperplane in such a way that the coordinates of the projection are good predictors of Y)



CanmetENERGY

Leadership in ecoInnovation



Natural Resources
Canada

Ressources naturelles
Canada

Canada

Samples characteristics

- **17 samples (100%) derived from Canadian oil sands crude**
- **Half of the streams upgraded by coking and half by hydrocracking**
- **All streams are nominally of diesel boiling point range**
- **All had sulfur levels below 15 ppm (except one)**
- **All had diverse chemistry**

Physicochemical and Engine Properties

Cetane number, n-paraffins, iso-paraffins, mono-cycloparaffins, poly-cycloparaffins, mono-aromatics, poly-aromatics, Olefins, T10, T50, T90, density, viscosity, carbon, hydrogen

Smoke, HC (ppm), CO (ppm), NO_x (ppm), COV (%), MFB50, CA10-90, dP/dCA, %LTHR, ISFC, ITE

CanmetENERGY

Leadership in ecoInnovation

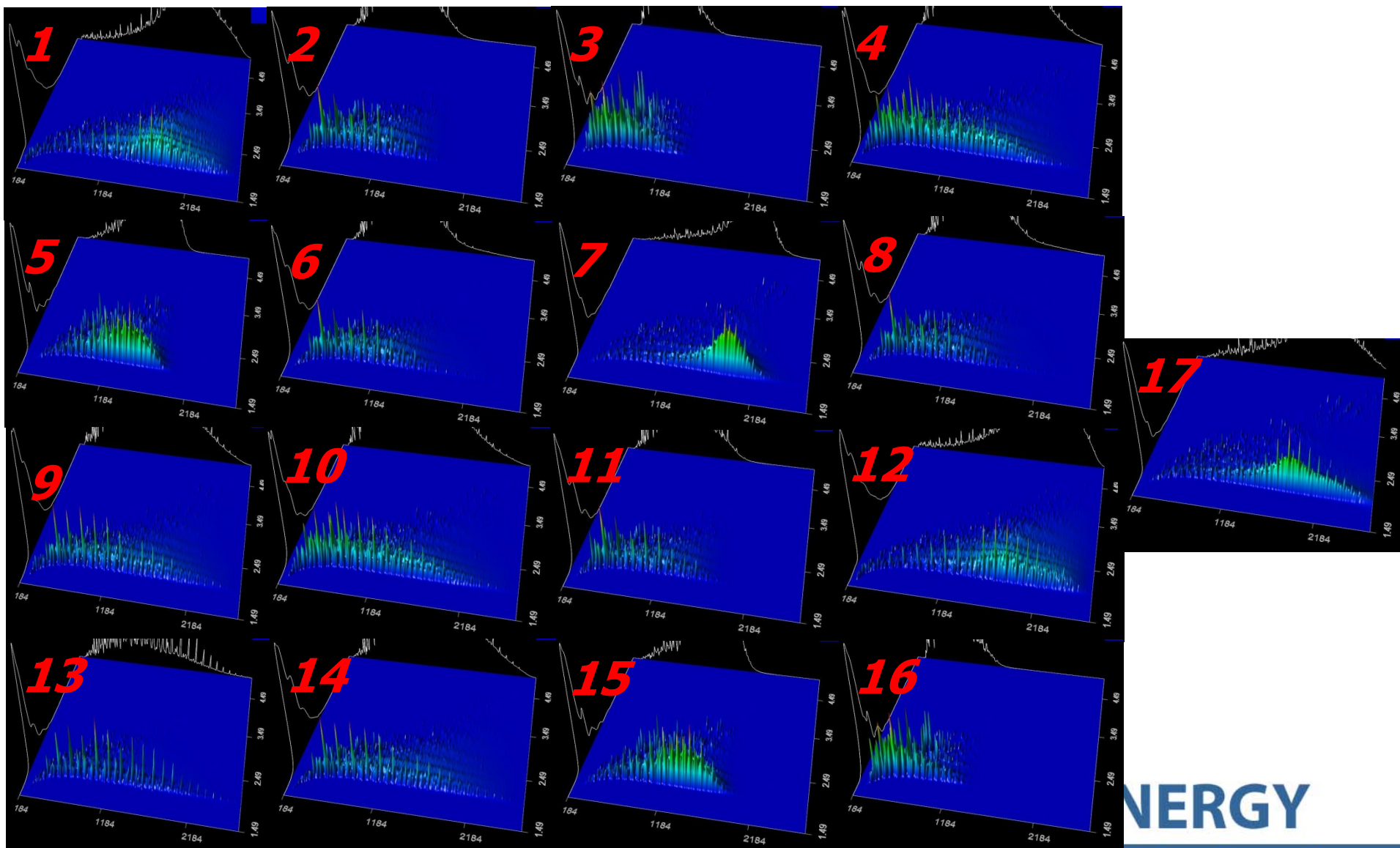


Natural Resources
Canada

Ressources naturelles
Canada

Canada

GCxGC chromatograms of HCCI fuels



ENERGY

Leadership in ecoInnovation



Natural Resources
Canada

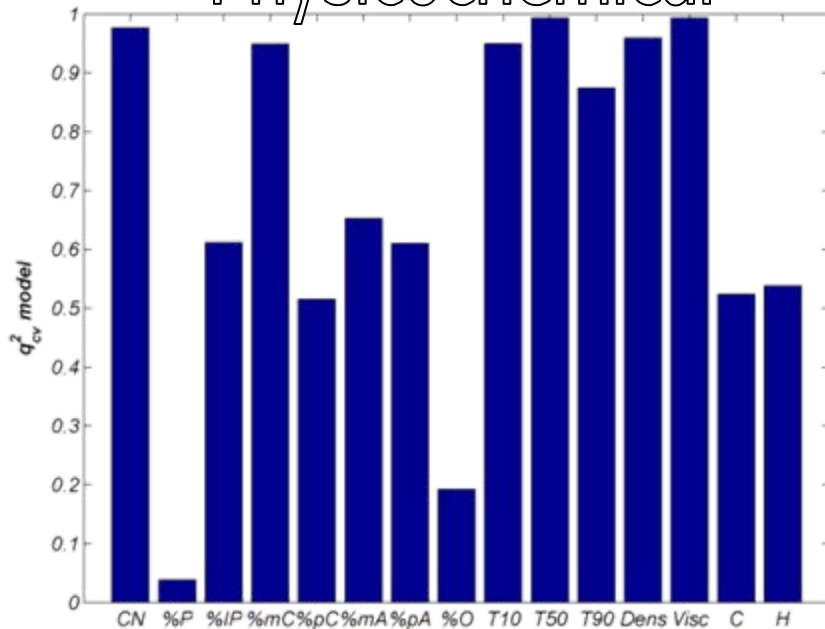
Ressources naturelles
Canada

Canada

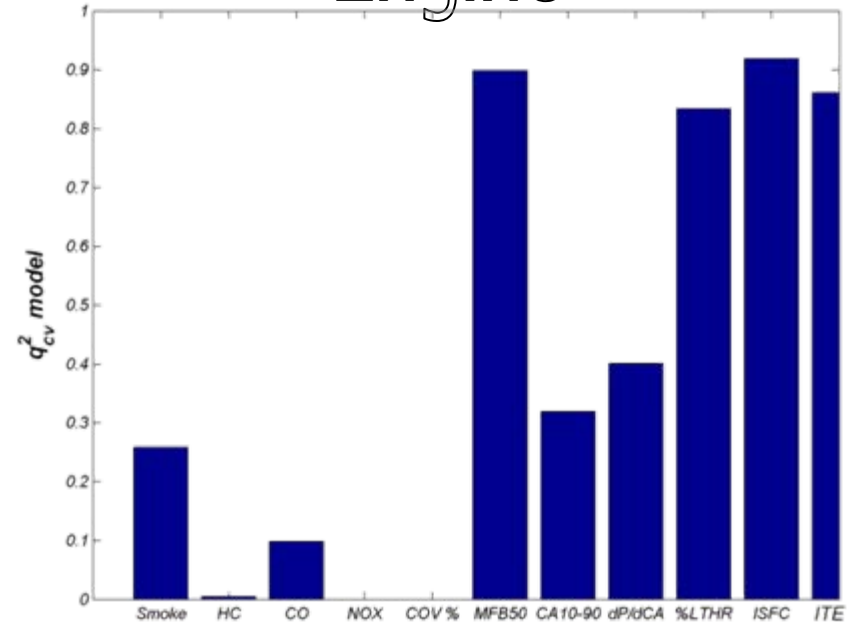
Q(2d)RPR

Results of PLS Analysis

Physicochemical



Engine



$q^2_{cv\ model}$ – correlation coefficient after cross-validation

The cross-validated correlation parameter (q^2_{model}) > 0.5 generally is regarded as good and a q^2_{model} > 0.9 as excellent

$$q^2_{cv\ model} = 1 - \frac{\sum (y_i - \hat{y}_i)^2}{\sum (y_i - \bar{y}_i)^2}$$

CanmetENERGY

Leadership in ecoInnovation

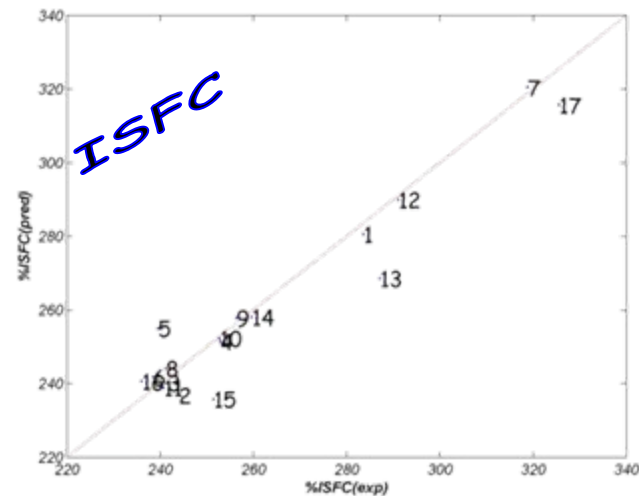
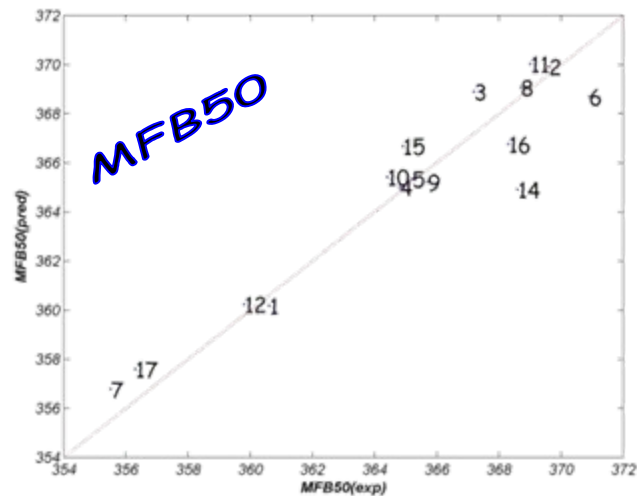
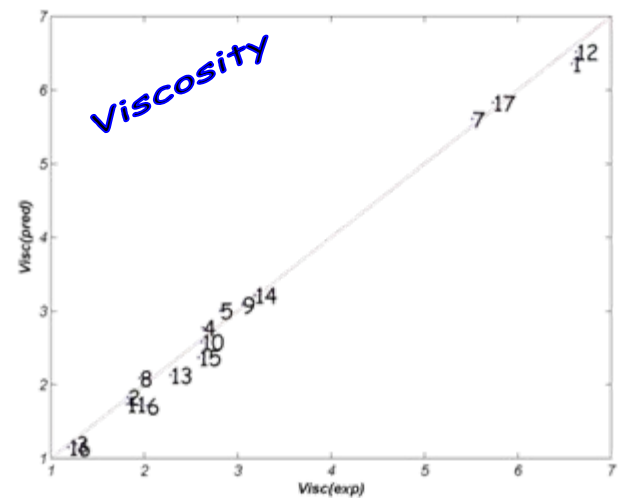
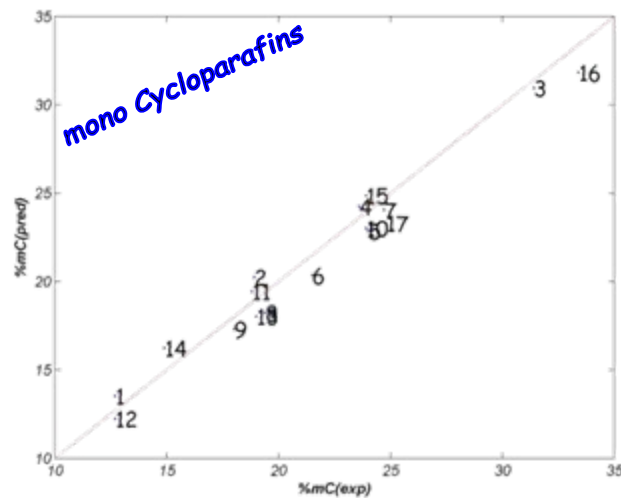
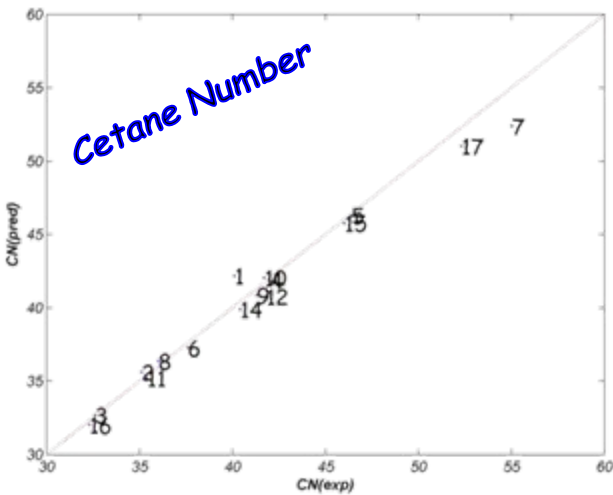


Natural Resources
Canada

Ressources naturelles
Canada

Canada

Q(2d)RPR (CORRELATIONS)



MFB50 – crank angle position for 50% of the fuel to be burned, determined from heat release analysis

ISFC – indicated specific fuel consumption

CanmetENERGY

Leadership in ecoInnovation



Natural Resources
Canada

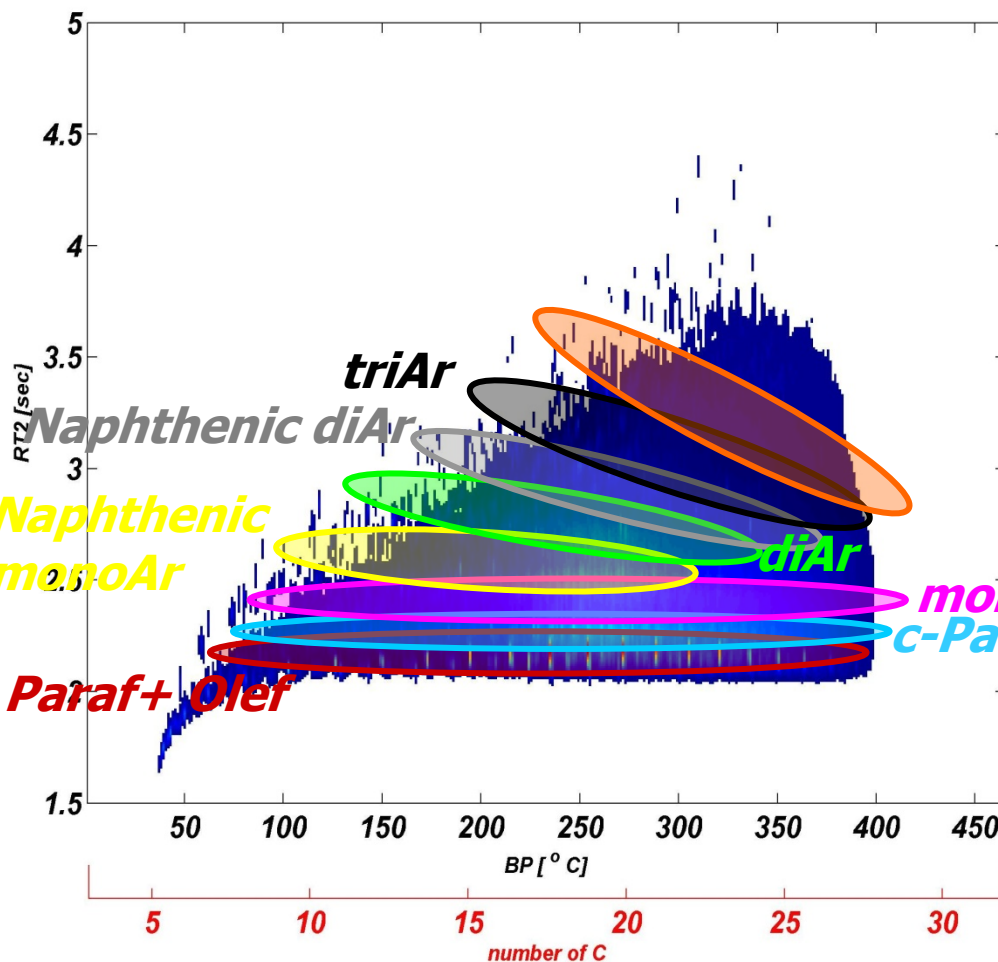
Ressources naturelles
Canada

Canada

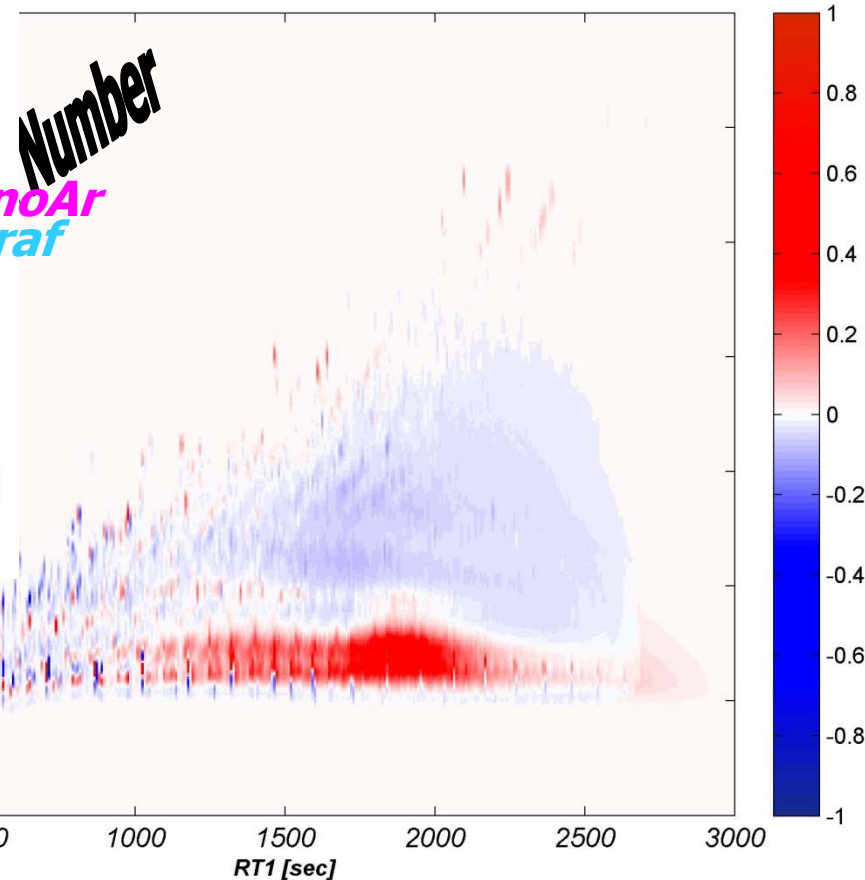
RPR

nts of PLS equation

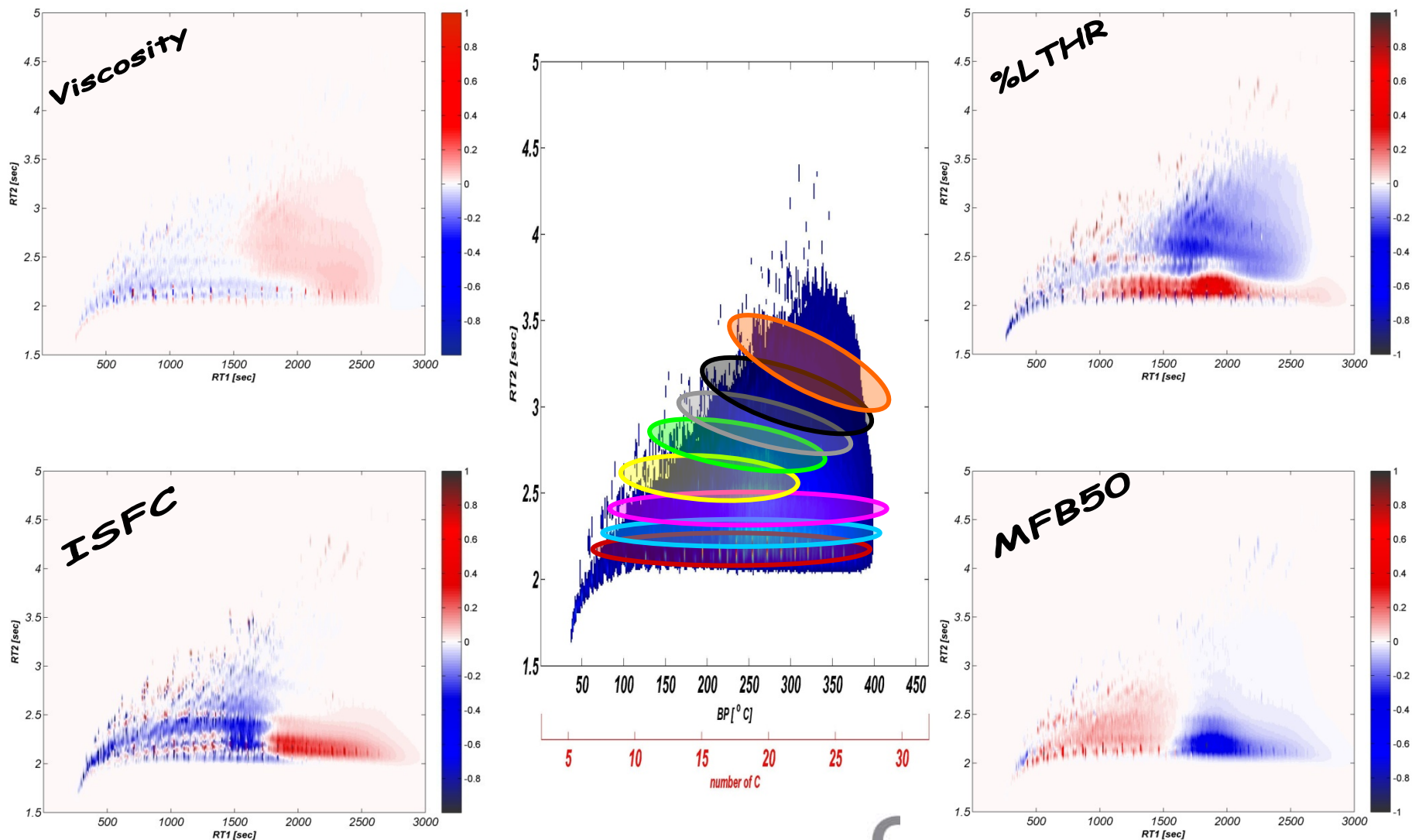
$$b_3x_3 + b_4x_4 + \dots + b_Nx_N$$



The **red** color indicates positive contribution and **blue** color negative contribution



Projection of coefficients of PLS equation



Canalys

Leadership in ecoInnovation



Natural Resources
Canada

Ressources naturelles
Canada

Canada

Conclusions

- 2D-GC is an emerging analytical technique which separates compounds in fuels. This allows analysis by
 - Identifying individual compounds
 - Grouping compounds by chemistry and boiling points
 - Performing statistical analysis by treating the chromatograms as compositional descriptors of fuels
- Q(2d)RPR technique allows correlations to be developed between the 2D-GC data and fuel chemical / physical properties and engine performance data (quantitative 2D retention property relationship)
 - Regions of chromatograms were shown to correlate, positively and negatively, to the values of fuel properties (cetane number, viscosity) and to HCCI research engine performance (MFB50, %LTHR)
 - This technique provided good correlations for some properties indicating that it is worthy of further study

CanmetENERGY

Leadership in ecoInnovation



Natural Resources
Canada

Ressources naturelles
Canada

Canada

Future work

- Continue to develop chemistry class and exact compound identification for 2D-GC
- Continue to develop and improve the statistical techniques that can be applied to large complex data sets
- Future work will include examining fuel - engine correlations with other selection criteria such as constant intake temperature or constant combustion phasing
- Improve engine model side of model by accounting for additional independent variables
- Apply technique to other performance related fuels data, such as lubricity or seal swell, and to performance from other types of engines

CanmetENERGY

Leadership in ecoInnovation



Natural Resources
Canada

Ressources naturelles
Canada

Canada

Acknowledgements

Program on Energy Research and Development, Natural Resources Canada

Vehicle Technologies Program, Energy Efficiency and Renewable Energy,
Department of Energy

CanmetENERGY

Leadership in ecoInnovation



Natural Resources
Canada

Ressources naturelles
Canada

Canada